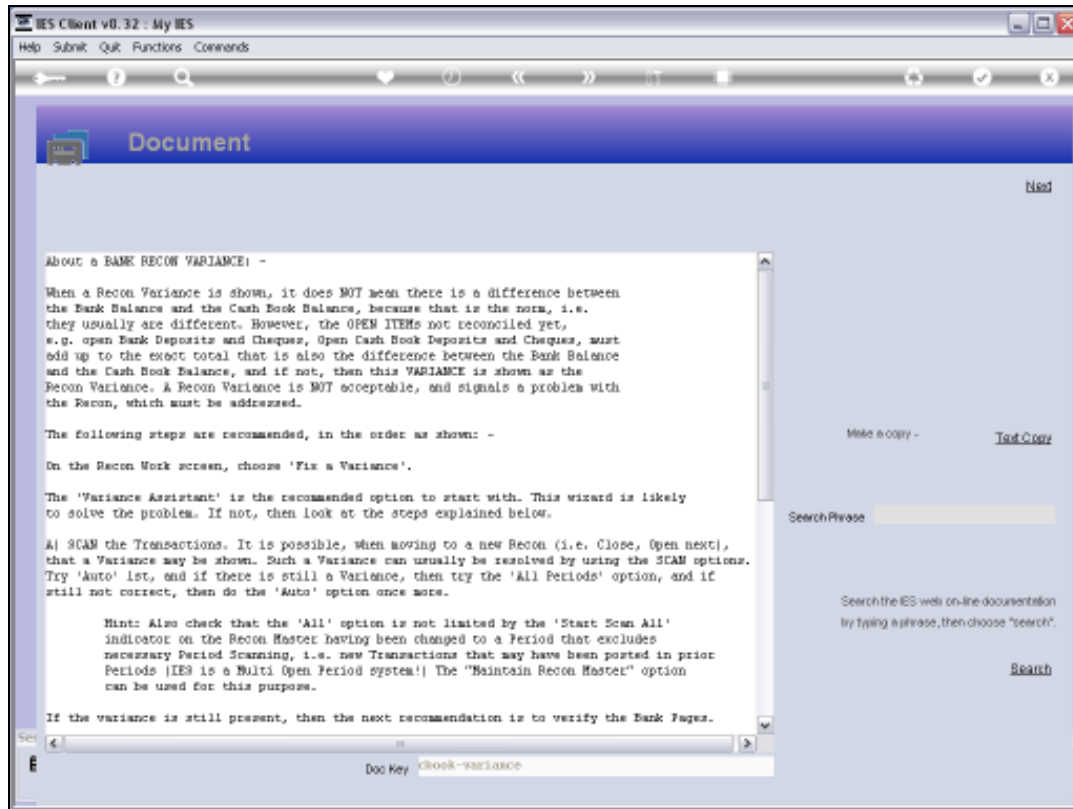


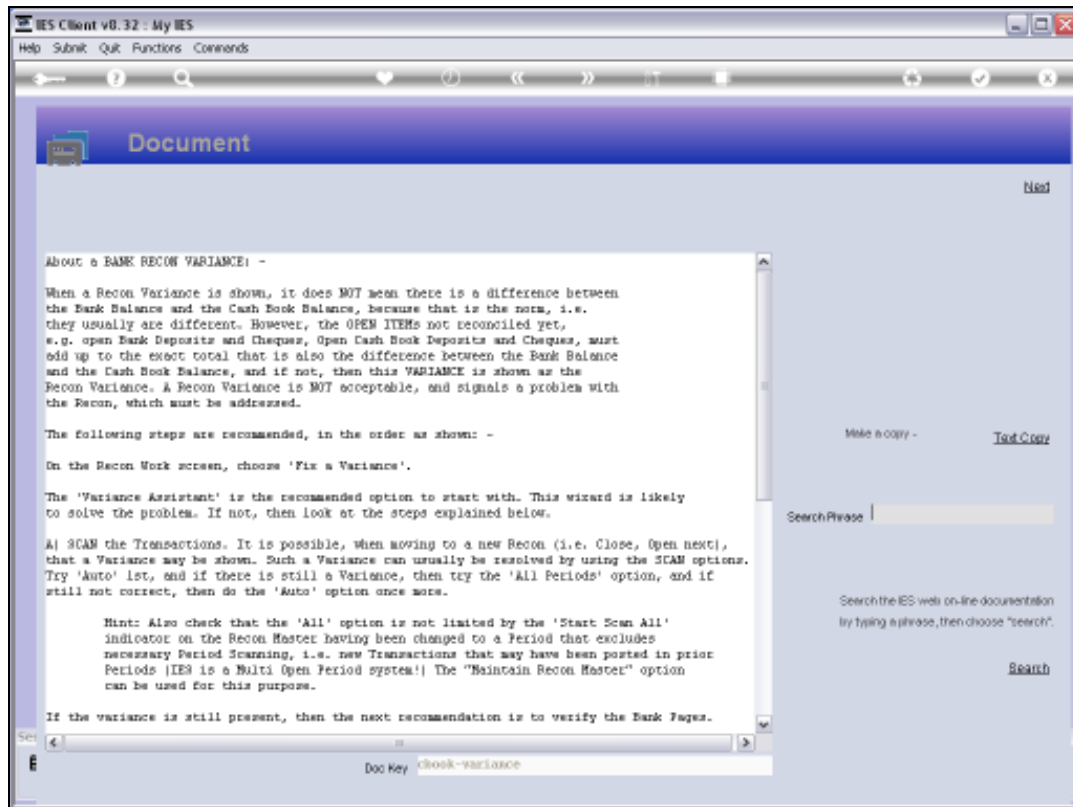
Slide 1

Slide notes: Back-tracking a Recon is a 'last resort' option to solve a Variance that cannot be corrected by the Variance Assistant or by Reconstruction of the Recon. That is the only time when we should consider using this option.



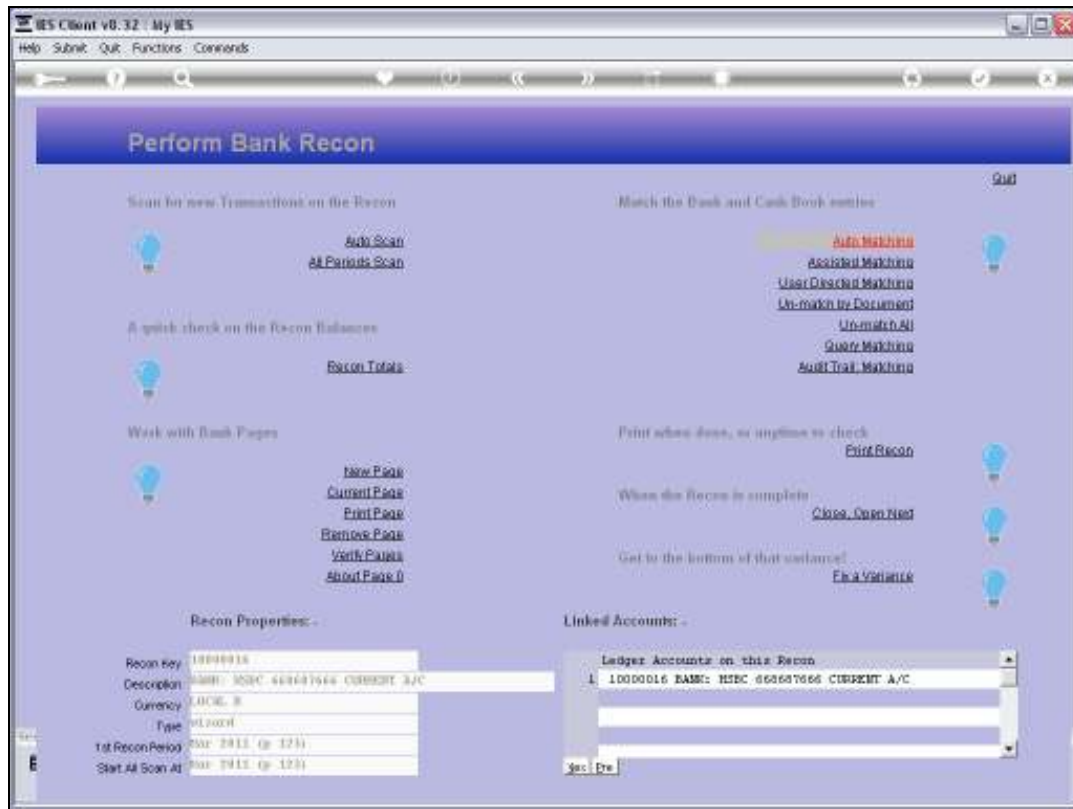
Slide 2

Slide notes: The Help document explains it all.



Slide 3

Slide notes:



Slide 4

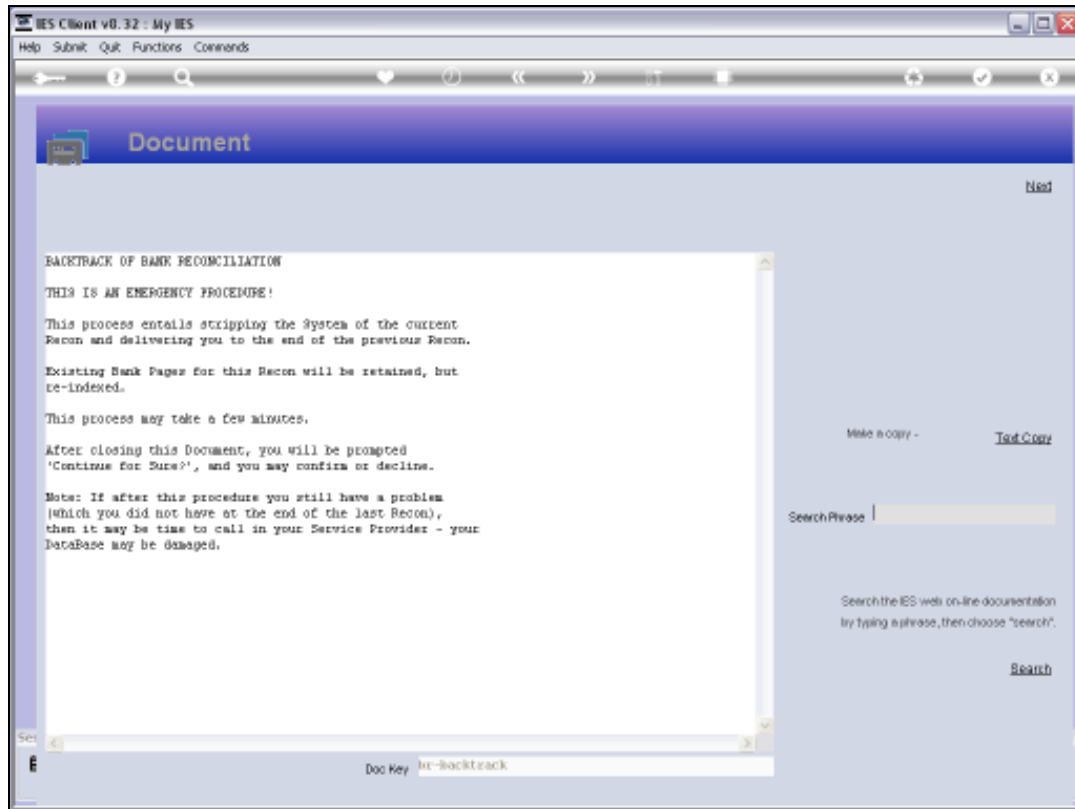
Slide notes:



Slide 5  
Slide notes:

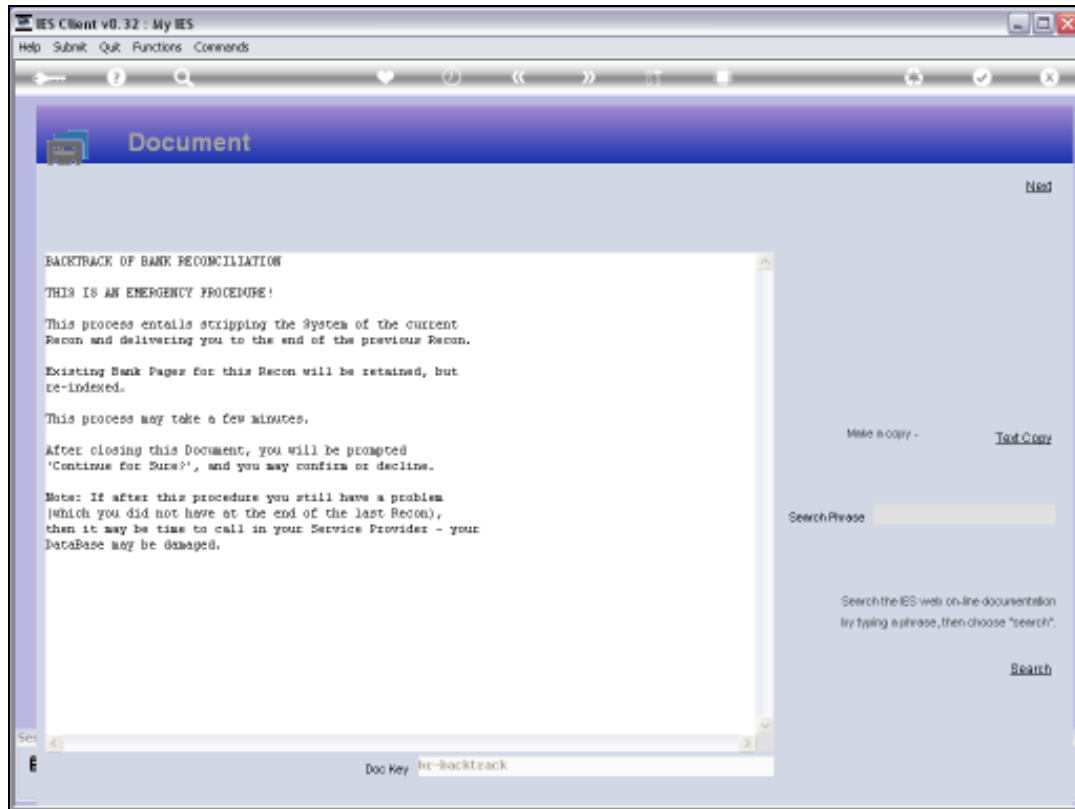


Slide 6  
Slide notes:



Slide 7

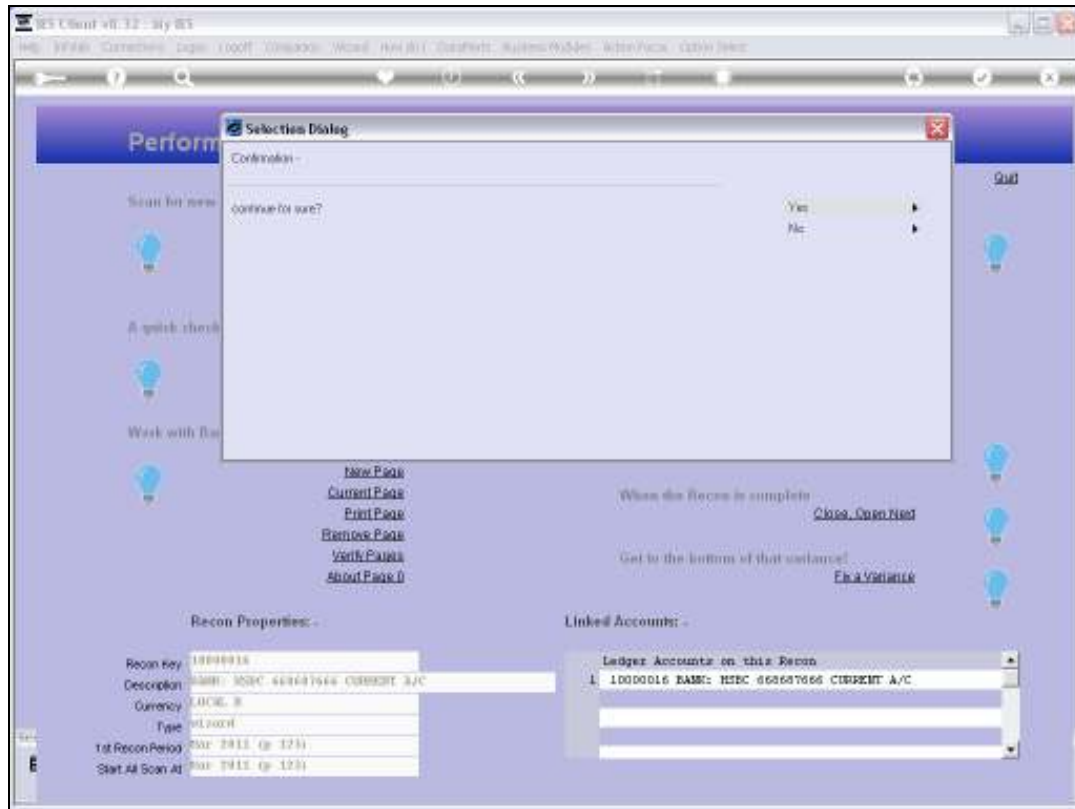
Slide notes: The system informs us about back-tracking.



Slide 8

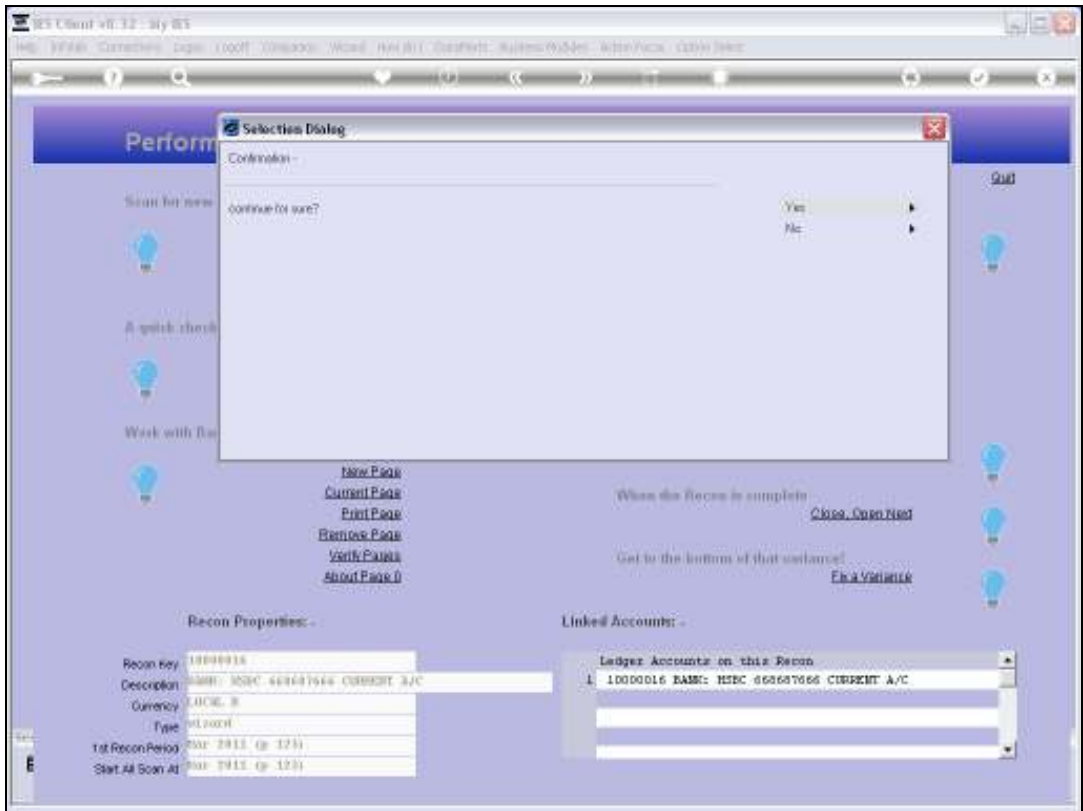
Slide notes:





Slide 9

Slide notes: If we choose 'yes' here then the Recon is back-tracked to the last good Recon without a Variance.



Slide 10

Slide notes:



Slide 11

Slide notes:



Slide 12  
Slide notes:



Slide 13

Slide notes: