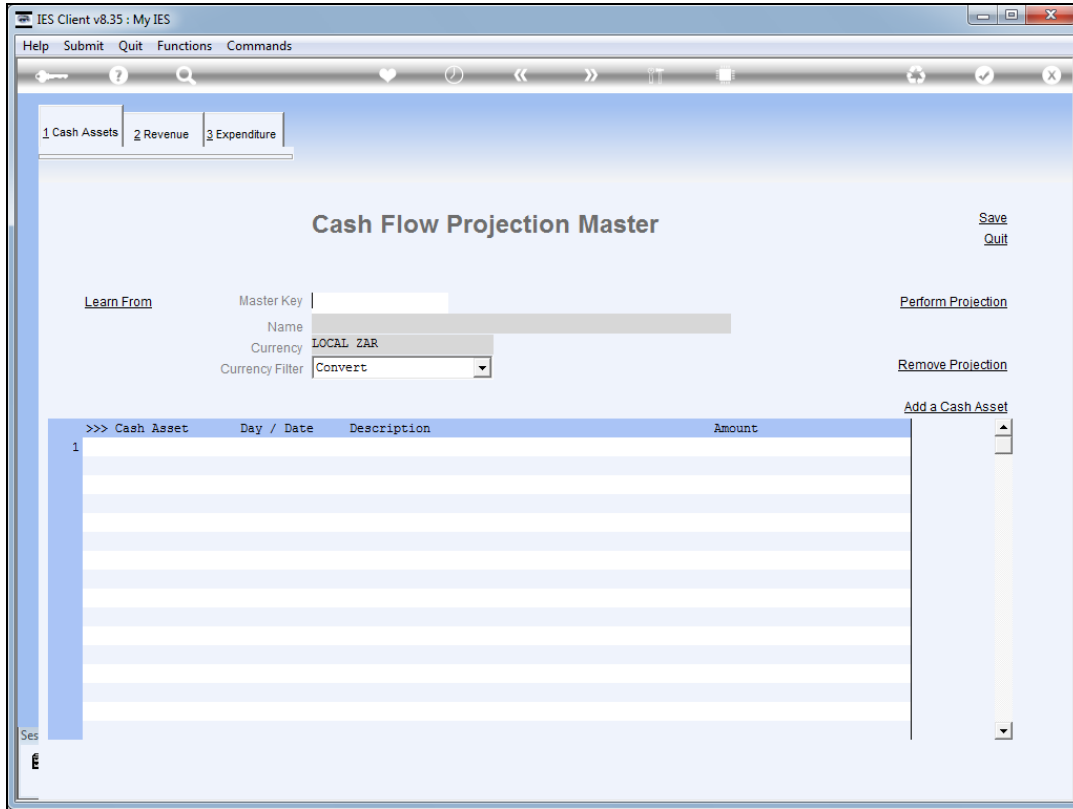
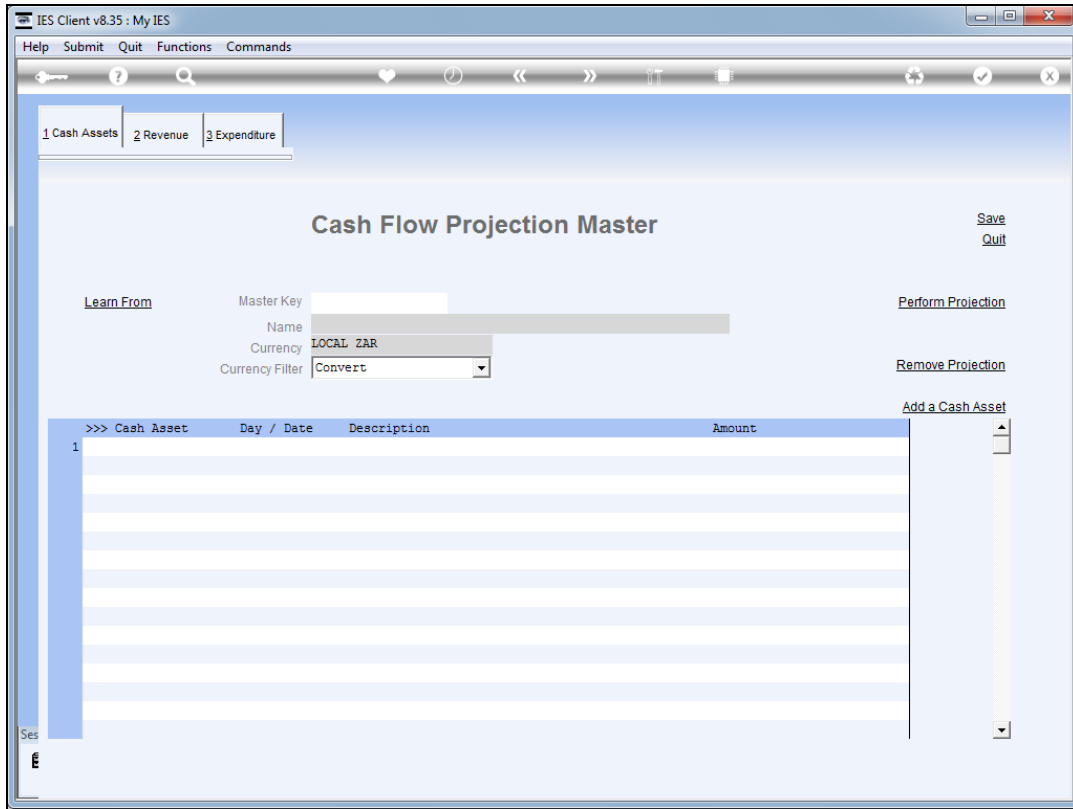


Slide 1

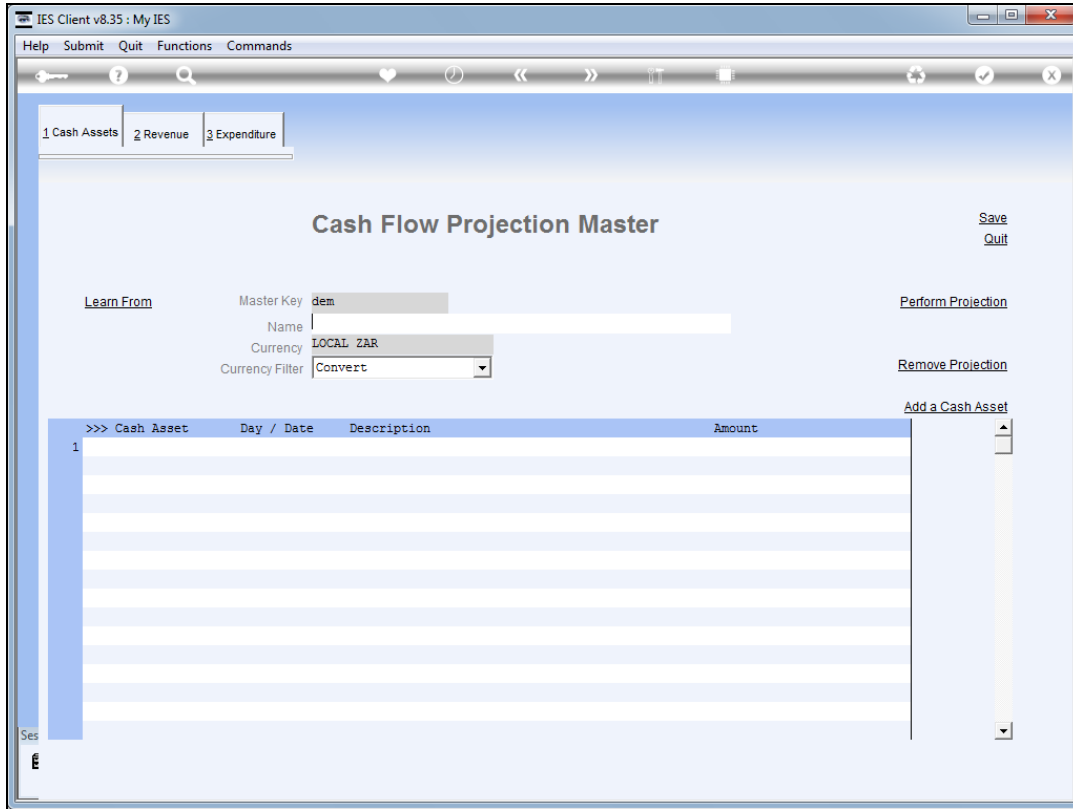
Slide notes: The Cash Watch is a function rich utility with which to formulate, maintain and perform Cash Flow forecasts for defined Cash streams, in any Currency.



Slide 2
Slide notes:

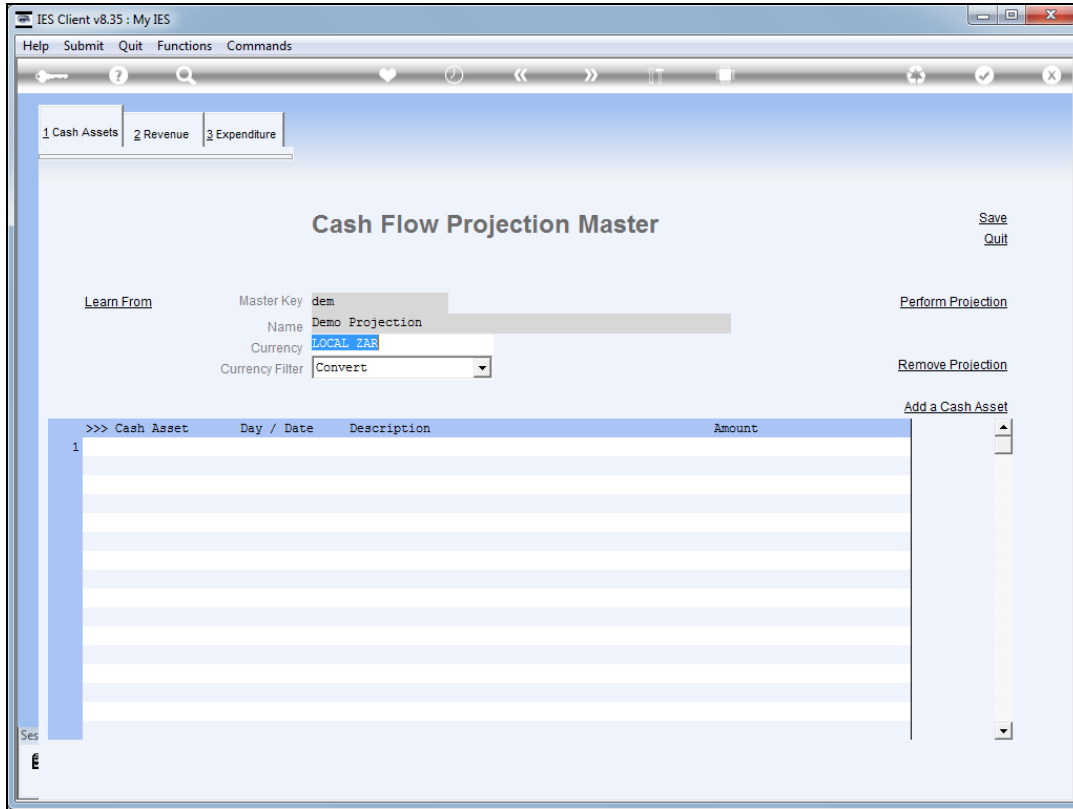


Slide 3
Slide notes:



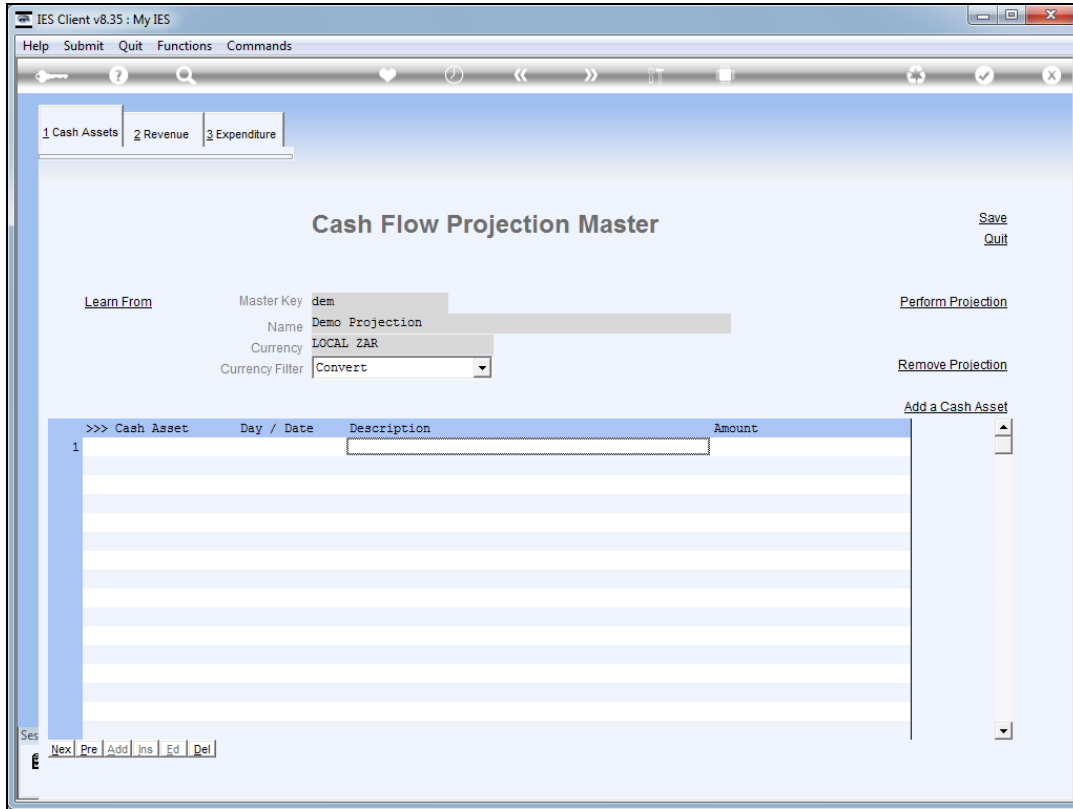
Slide 4

Slide notes: For our demonstration, we will quickly construct a new projection master.

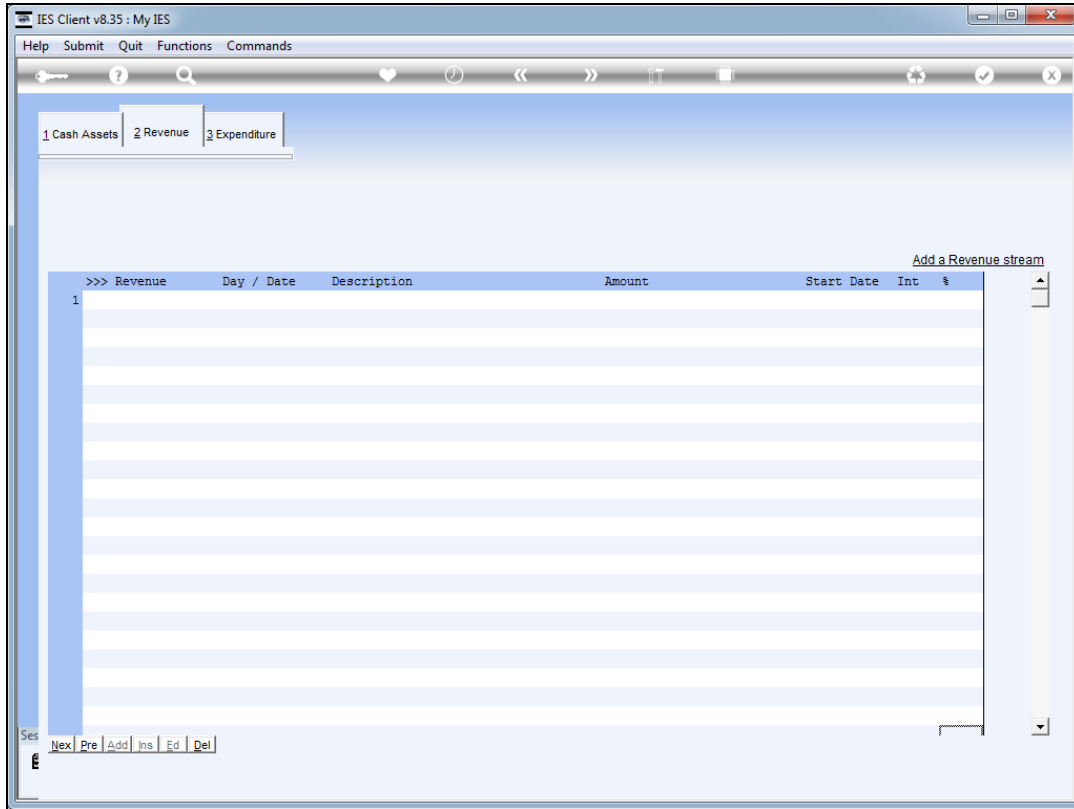


Slide 5

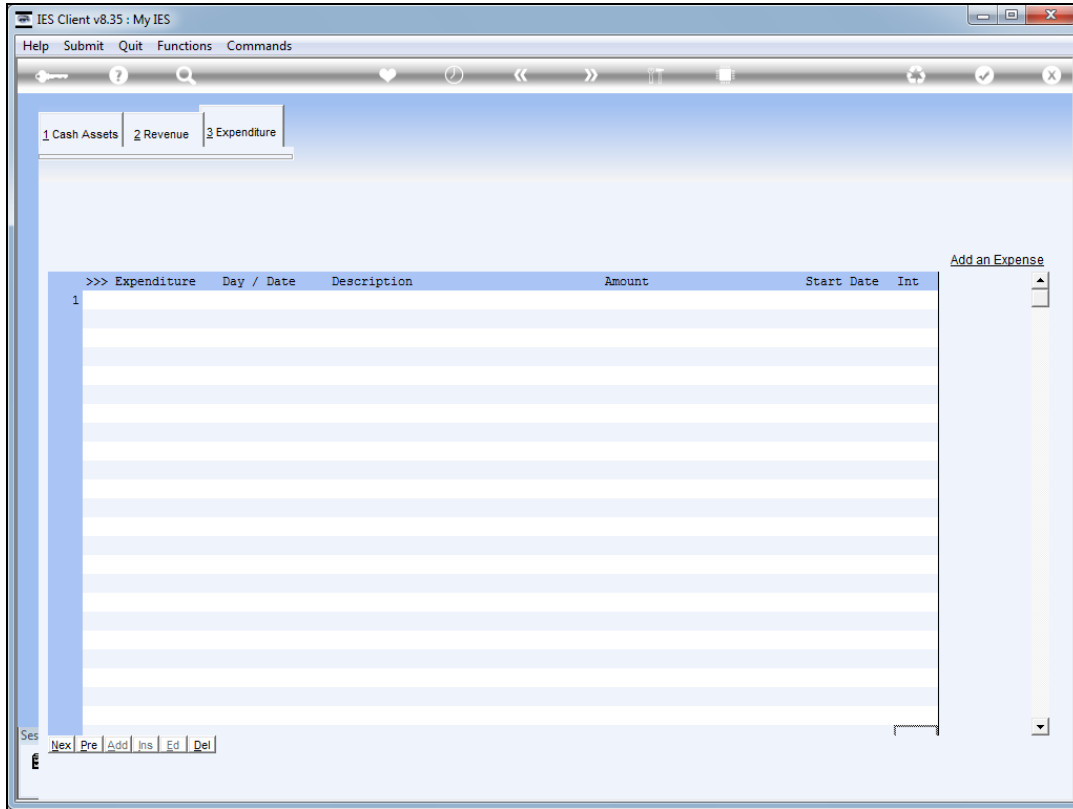
Slide notes: A projection can include primary element types called Cash Assets, Revenue and Expenditure, and there are different options available within in each type.



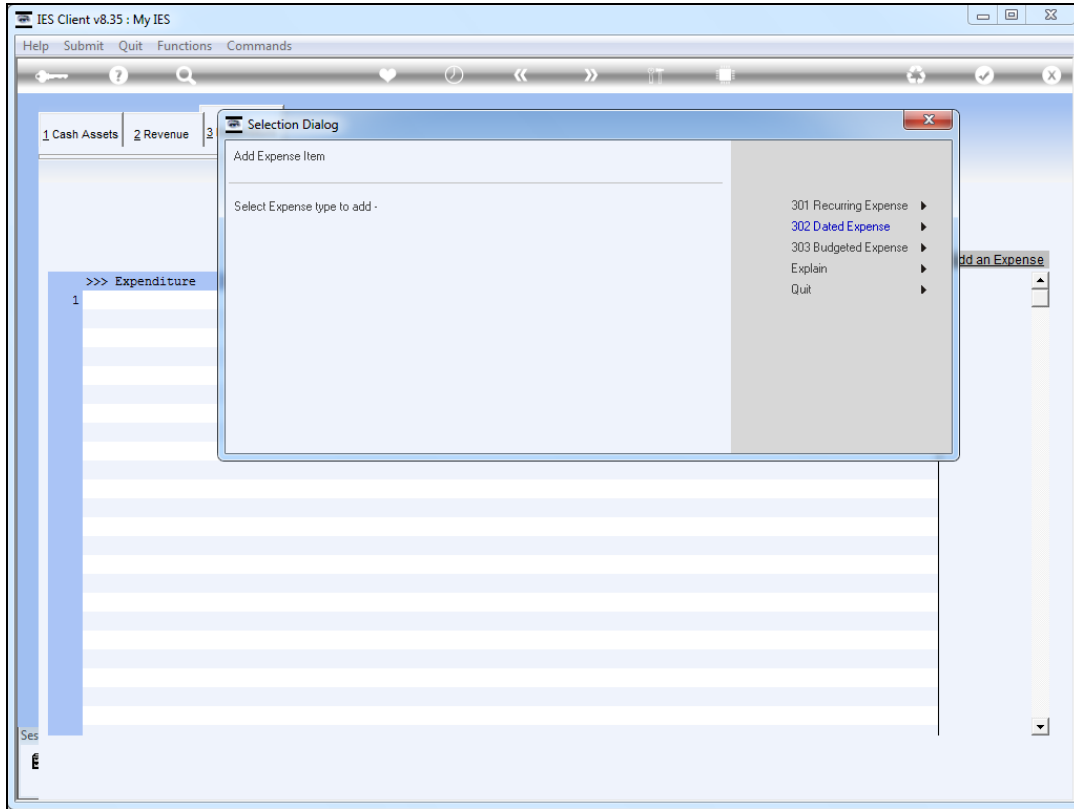
Slide 6
Slide notes:



Slide 7
Slide notes:

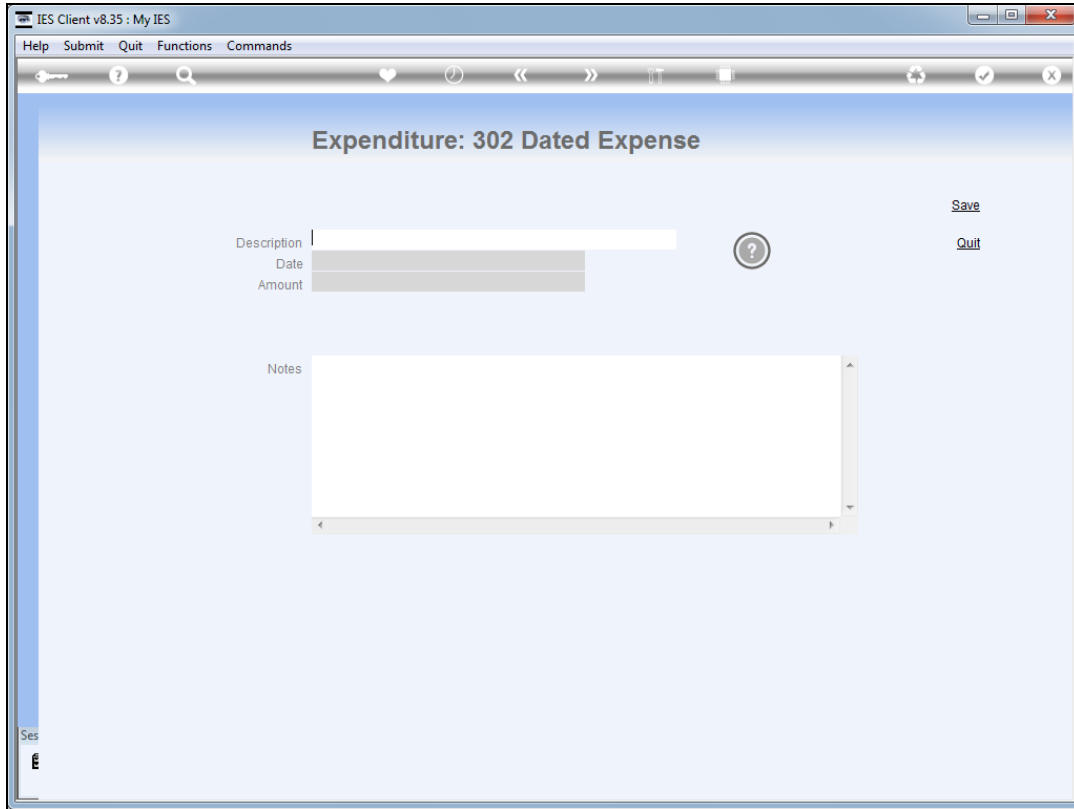


Slide 8
Slide notes:

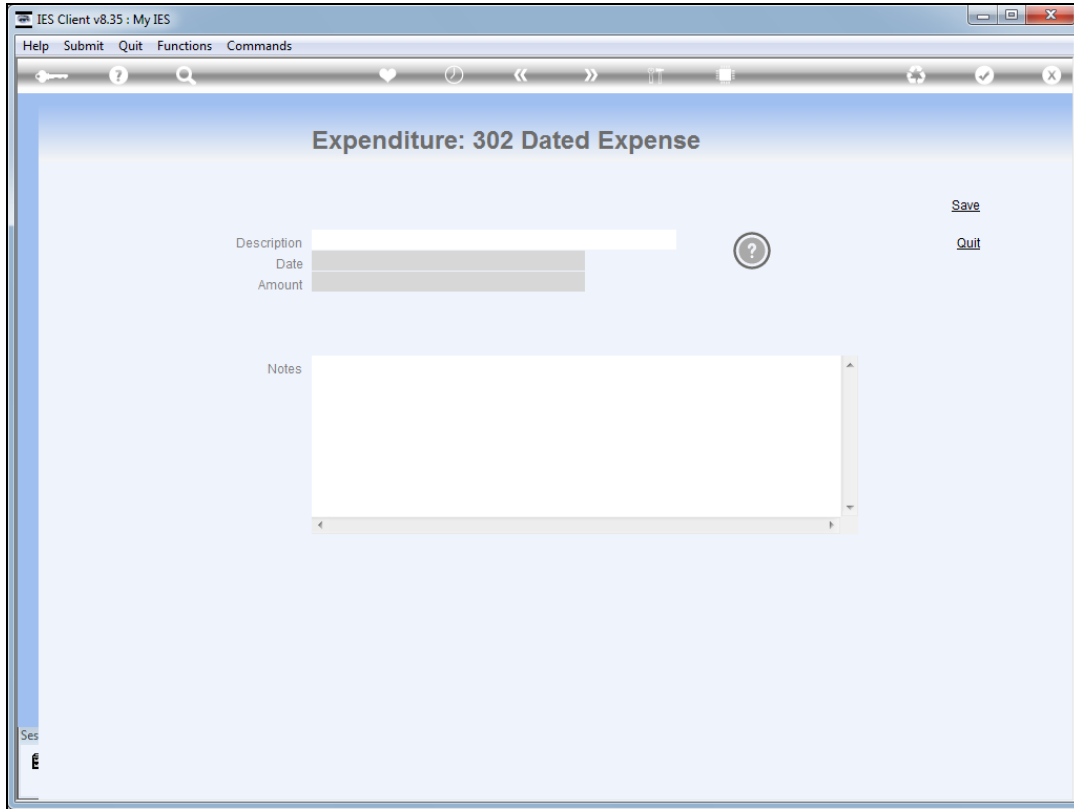


Slide 9

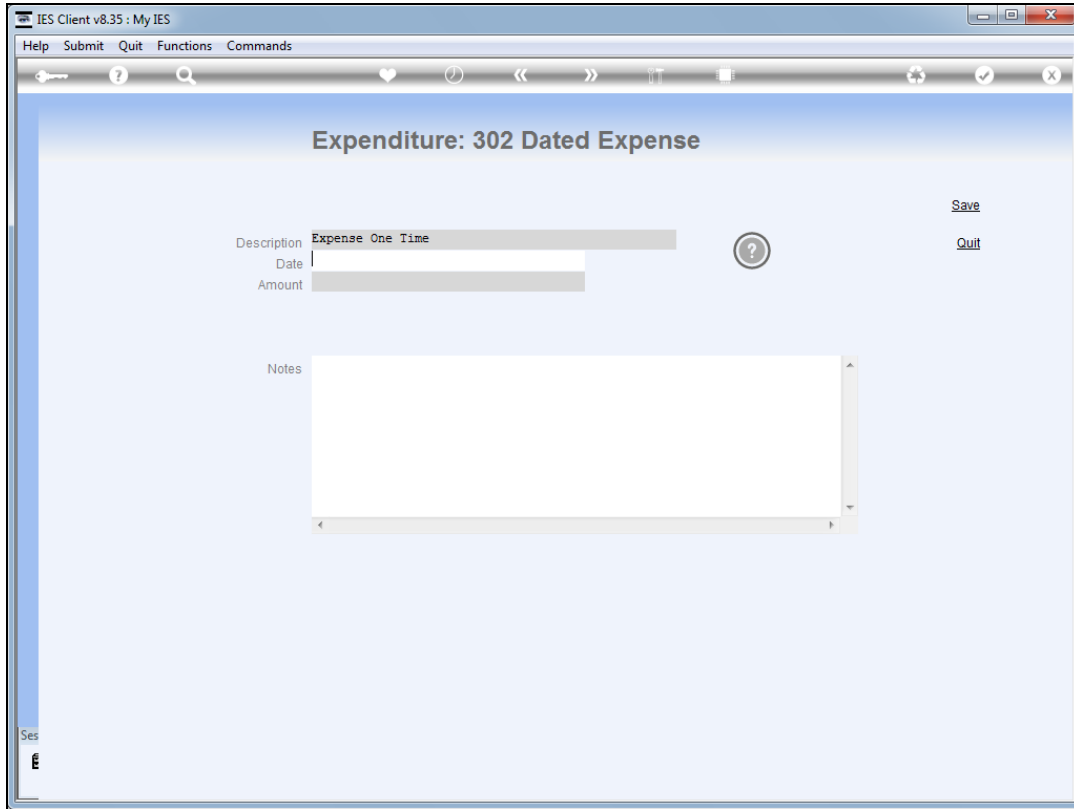
Slide notes: We will add a Dated Expense element as an example.



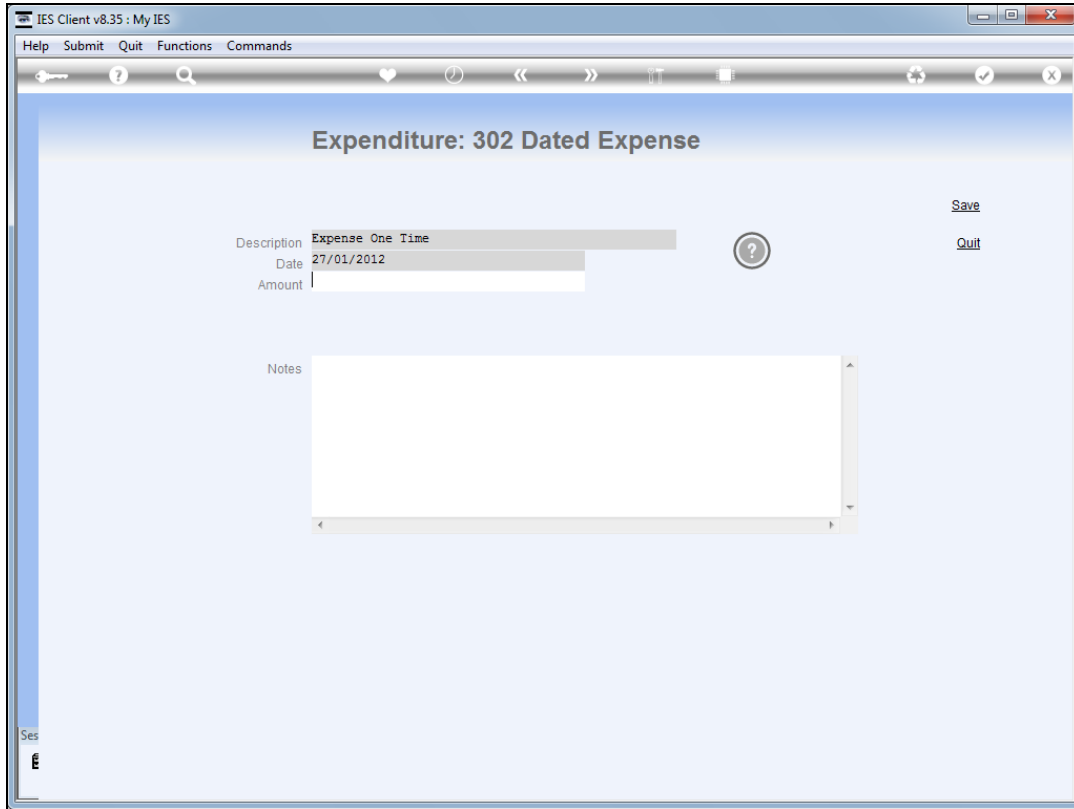
Slide 10
Slide notes:



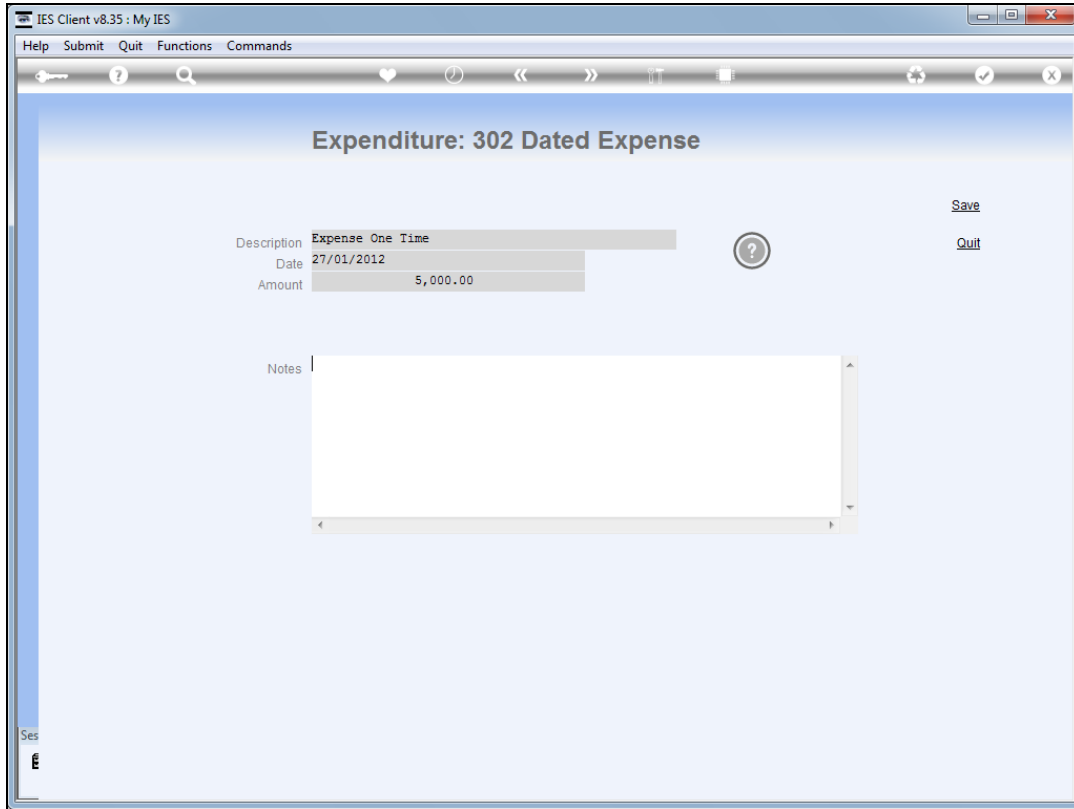
Slide 11
Slide notes:



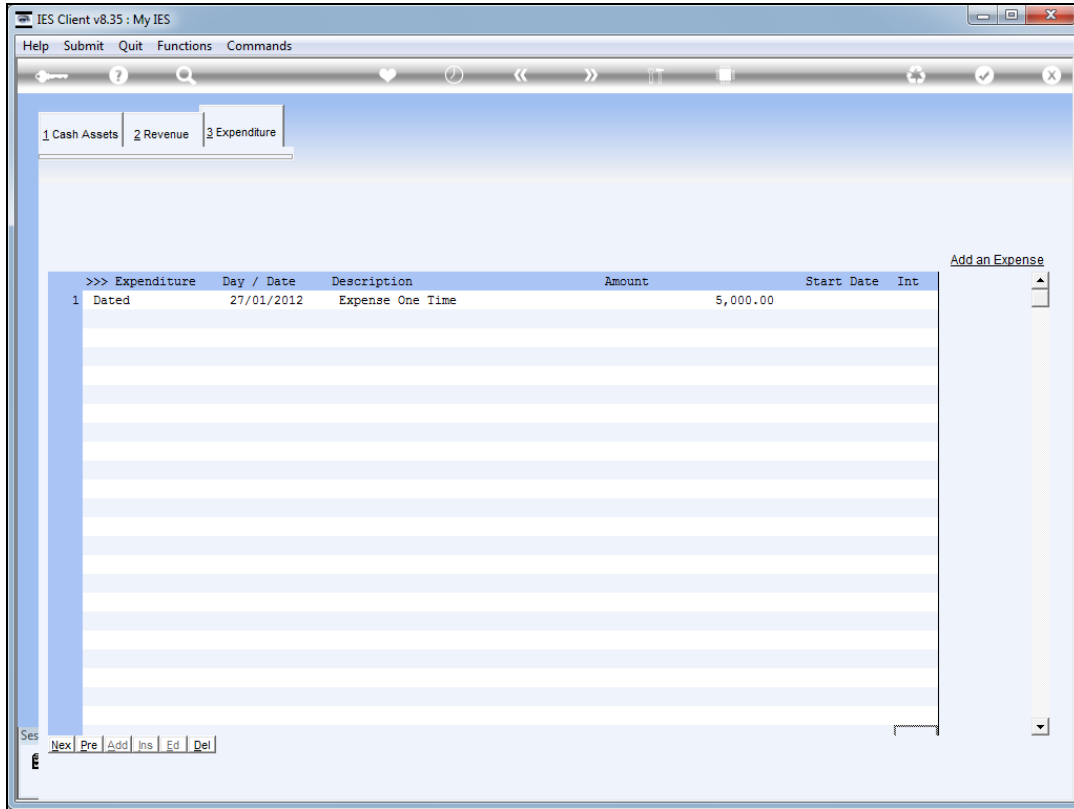
Slide 12
Slide notes:



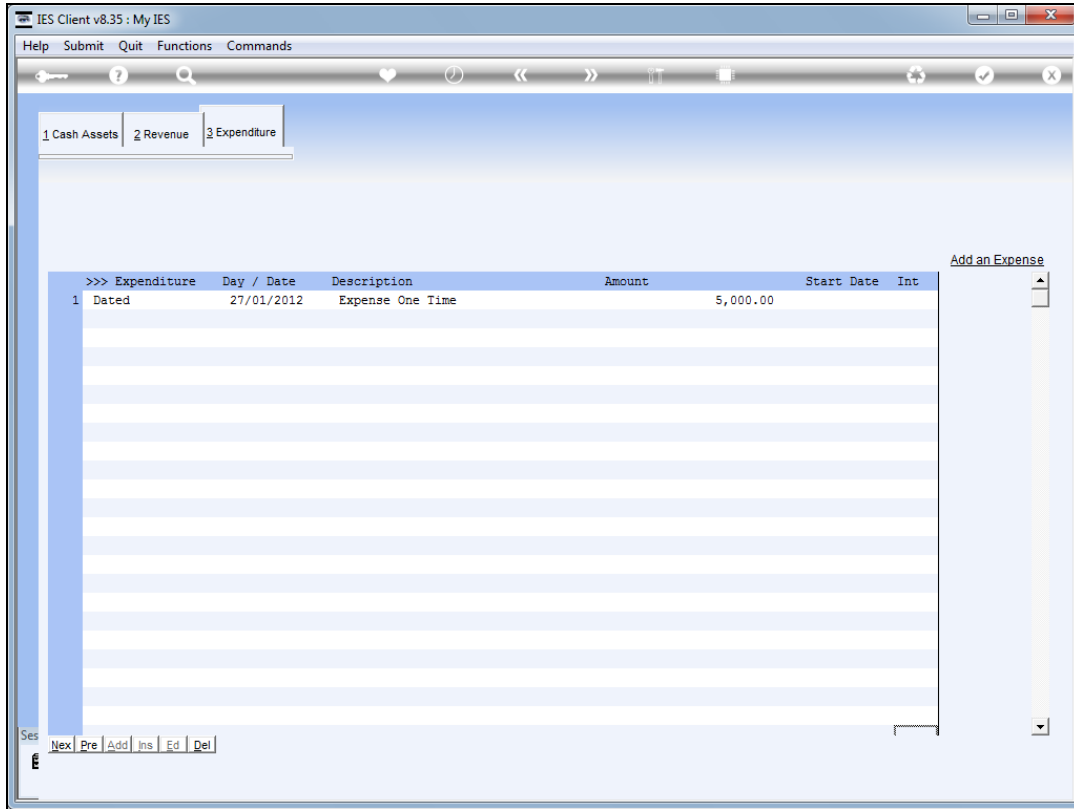
Slide 13
Slide notes:



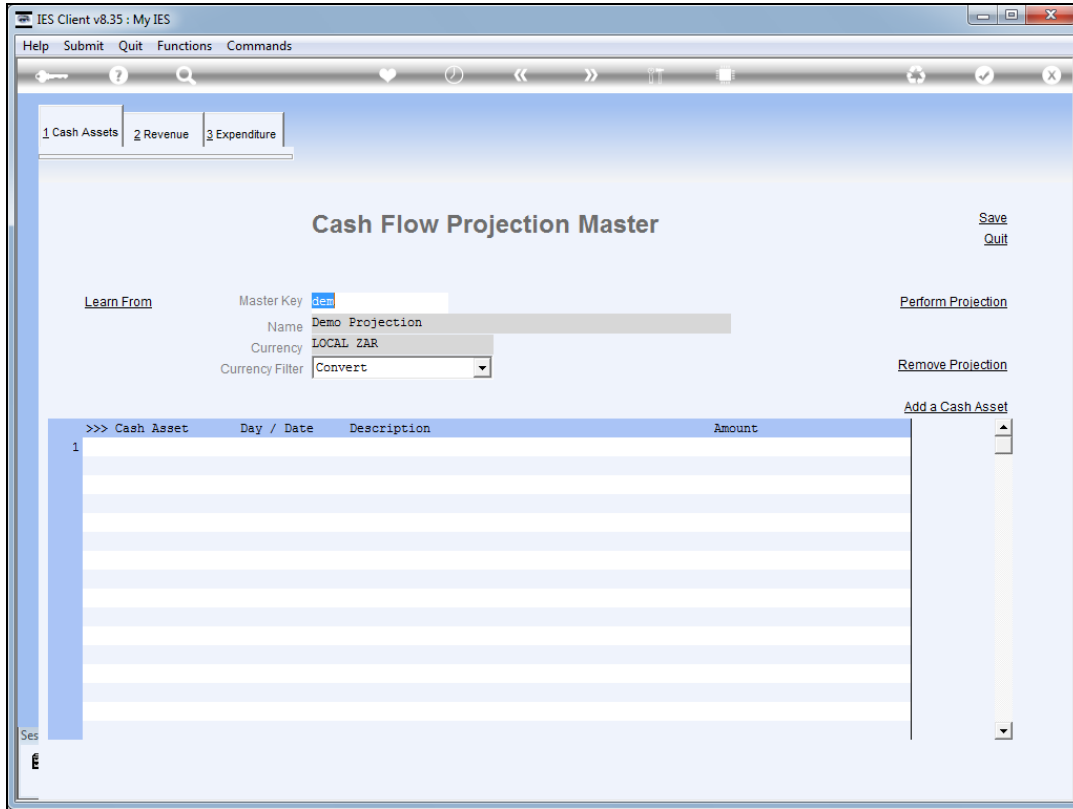
Slide 14
Slide notes:



Slide 15
Slide notes:

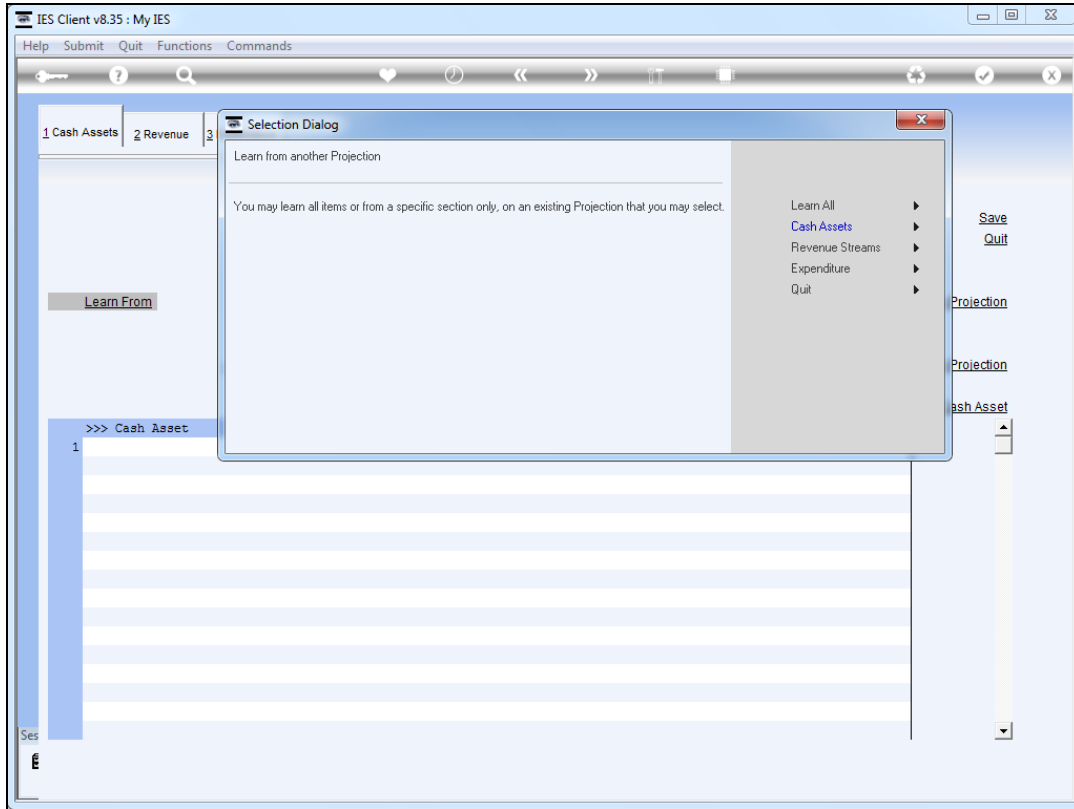


Slide 16
Slide notes:

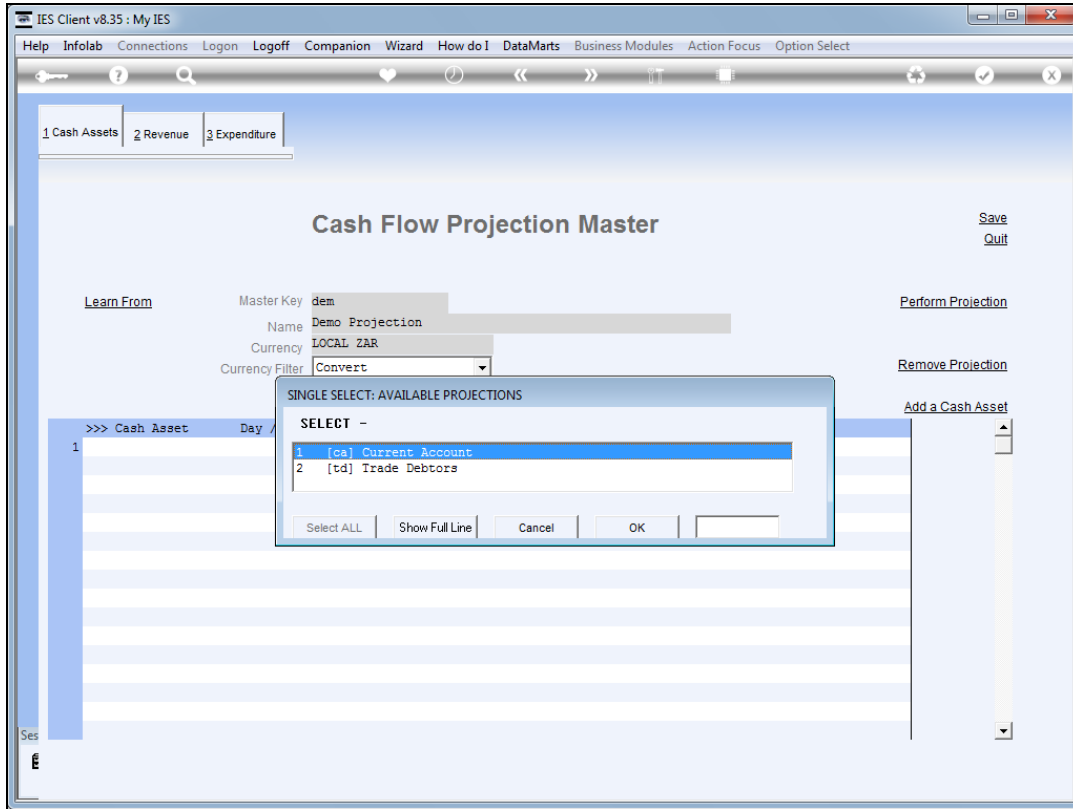


Slide 17

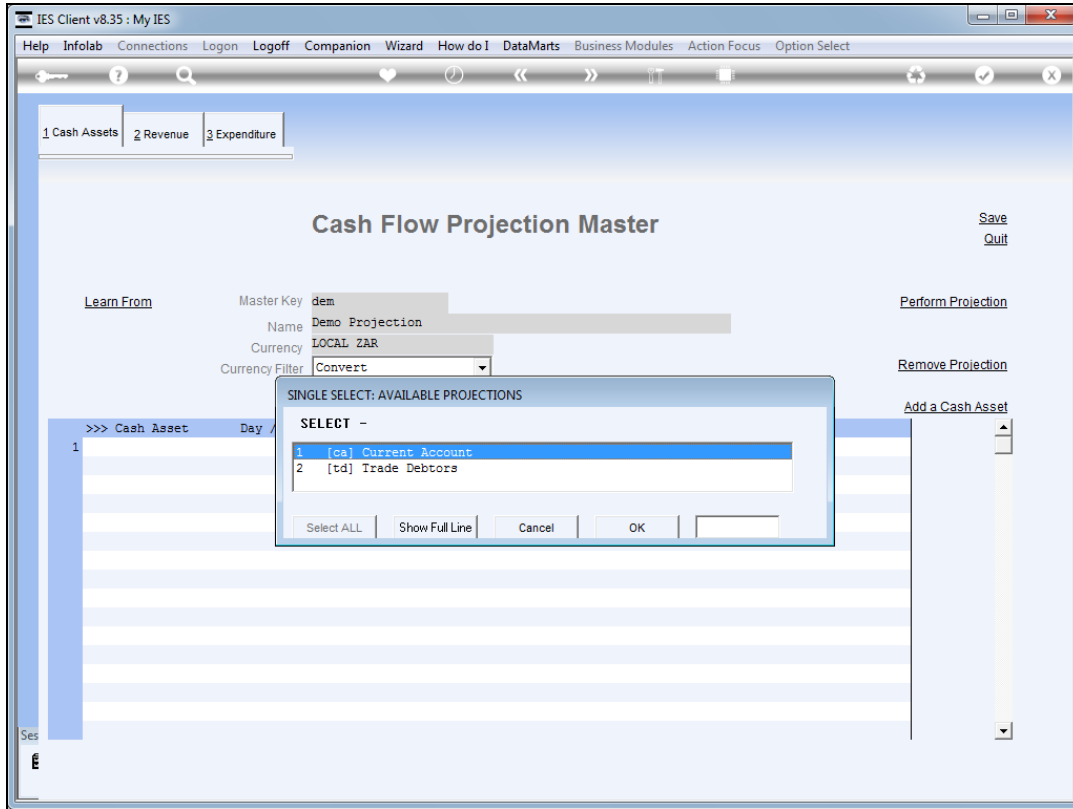
Slide notes: We also have an option to learn existing elements from other projections, which make it quick and easy to construct a new projection.



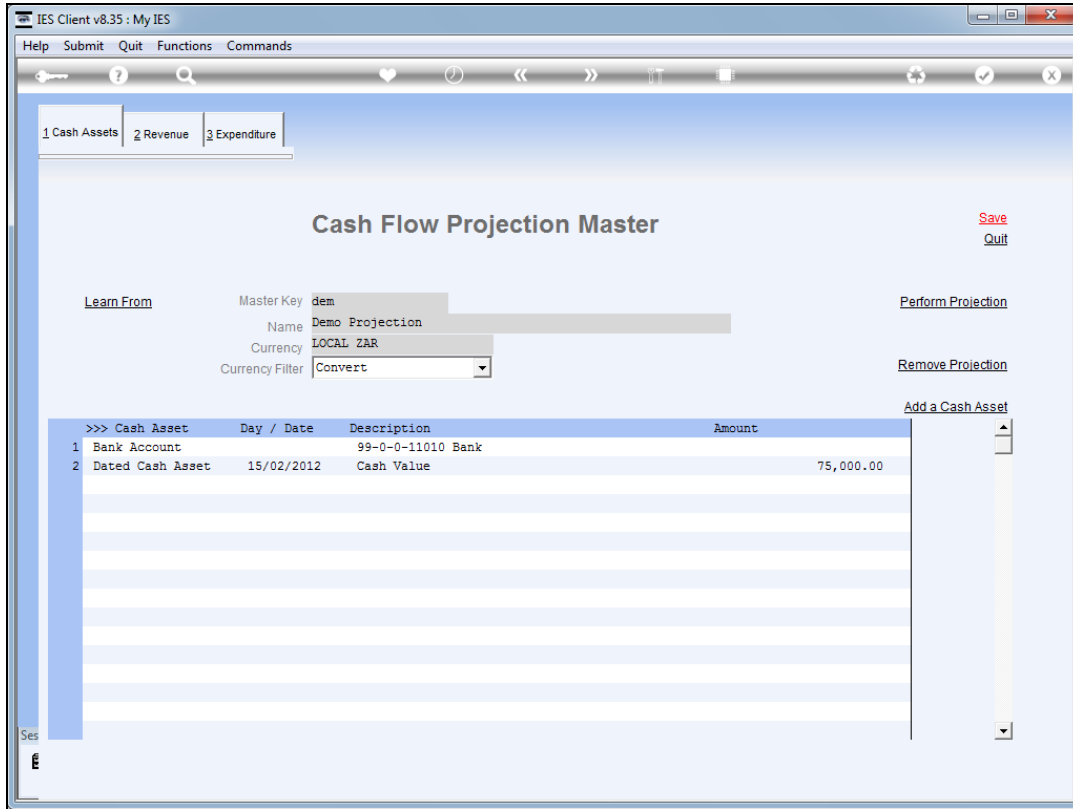
Slide 18
Slide notes:



Slide 19
Slide notes:

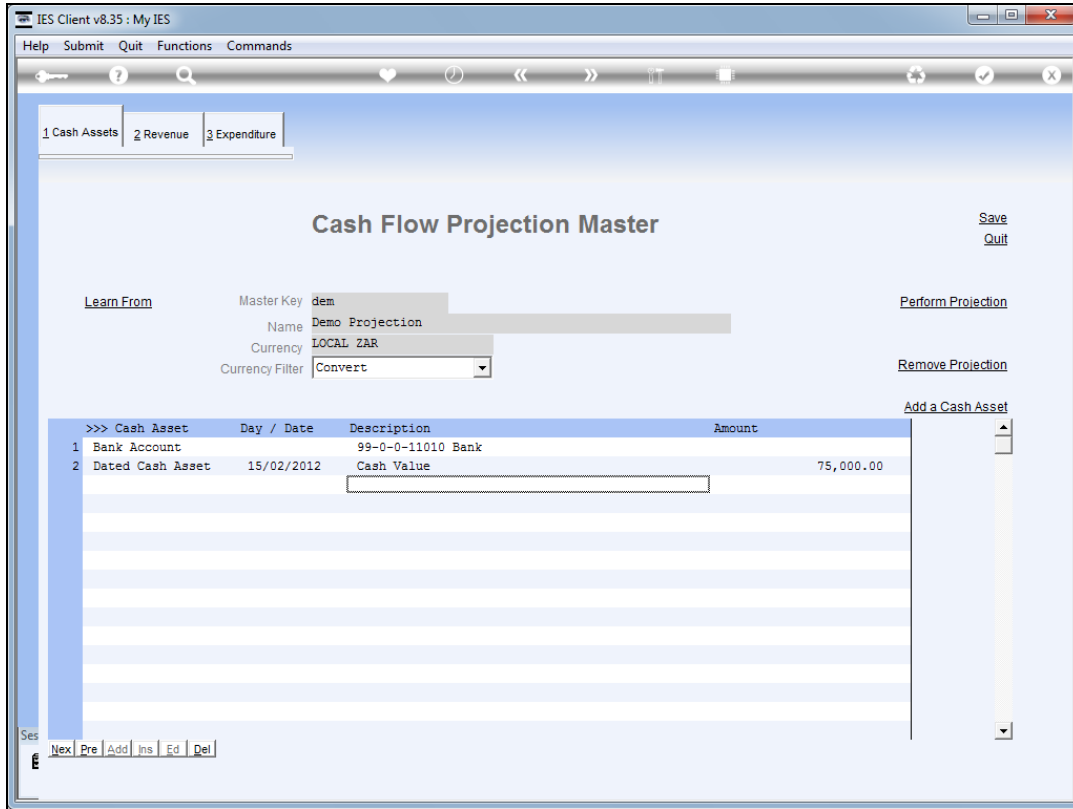


Slide 20
Slide notes:



Slide 21

Slide notes: Now we already have a projection with a number of entries in each primary section, and of course we may remove some, add others, and modify yet others.



Slide 22
Slide notes:

The screenshot shows the IES Client v8.35: My IES interface. At the top, there are menu options: Help, Submit, Quit, Functions, and Commands. Below the menu is a navigation bar with icons for home, search, back, forward, and refresh. A tabbed interface is visible with three tabs: 1 Cash Assets, 2 Revenue (selected), and 3 Expenditure. The main area displays a table titled 'Add a Revenue stream' with the following data:

>>> Revenue	Day / Date	Description	Amount	Start Date	Int	€
1 Dated	15/02/2012	Project Hoops	75,000.00			
2 Recurring	3	Rental Unit 1002	5,000.00	25/01/2012	1	
3 ODP Deposits		ODP Deposits				
4 ODP Invoices		ODP Invoices				
5 ODP Installment		ODP Installments				
6 Budgeted		Sales			12	

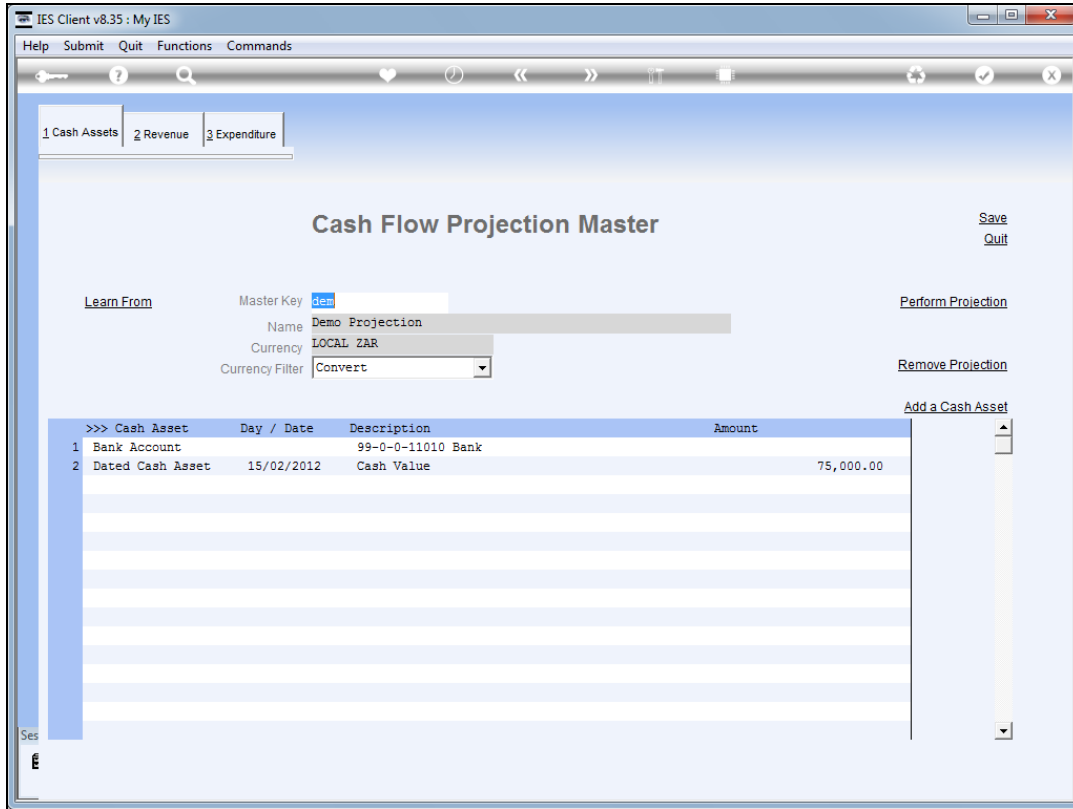
At the bottom of the window, there is a status bar with the text 'Ses' and a set of navigation buttons: 'Nex', 'Pre', 'Add', 'Ins', 'Ed', 'Del'.

Slide 23
Slide notes:

The screenshot shows a software window titled "IES Client v8.35 : My IES". At the top, there is a menu bar with "Help", "Submit", "Quit", "Functions", and "Commands". Below the menu bar is a toolbar with various icons. A tabbed interface is visible with three tabs: "1 Cash Assets", "2 Revenue", and "3 Expenditure", with "3 Expenditure" being the active tab. The main area displays a table of expenditure records. The table has columns for a sequence number, type, day/date, description, amount, start date, and interval. There are seven rows of data. To the right of the table is a vertical scroll bar and a button labeled "Add an Expense". At the bottom left, there is a status bar with the text "Ses" and a set of navigation buttons: "Nex", "Pre", "Add", "Ins", "Ed", "Del".

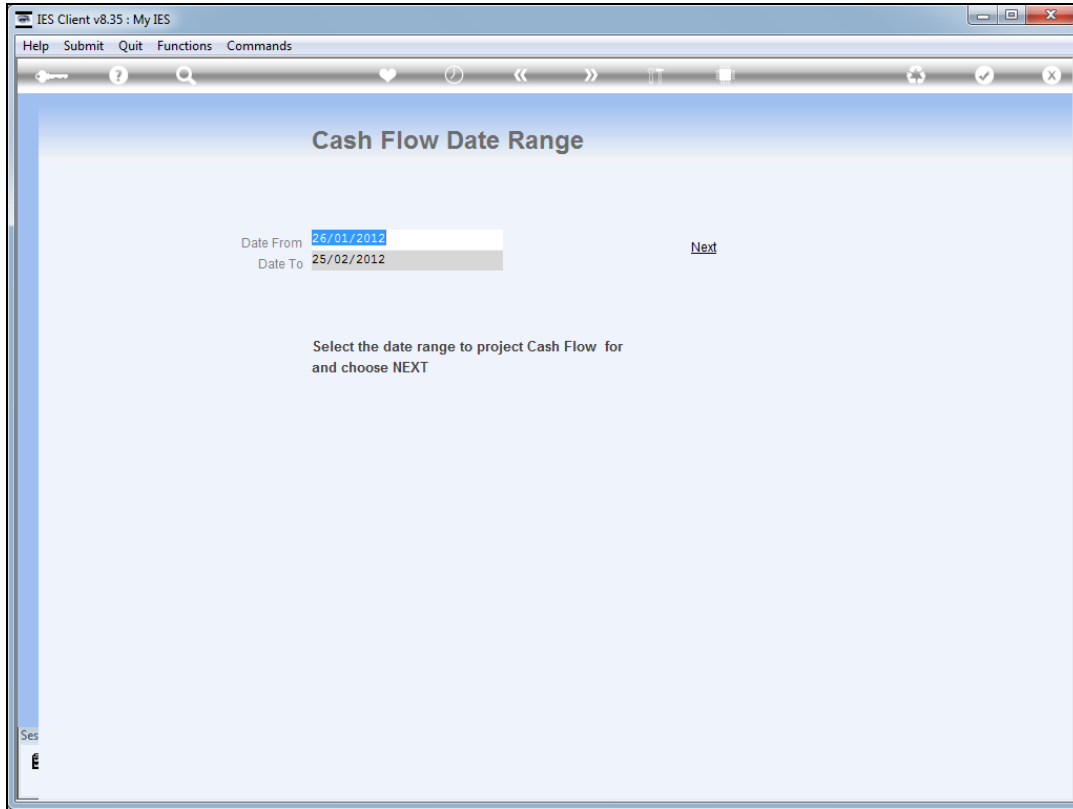
>>> Expenditure	Day / Date	Description	Amount	Start Date	Int
1 Dated	27/01/2012	Expense One Time	5,000.00		
2 Recurring	7	Sure Insurance Co	5,350.65	25/01/2012	1
3 Recurring	31	Copwatch Security Services	1,600.00	25/01/2012	1
4 Recurring	1	Office Levy	985.00	25/01/2012	1
5 Budgeted		Staff Costs			12
6 Dated	08/02/2012	H&H Consultation	35,000.00		
7 Recurring	15	Top Exec	2,501.00	26/01/2012	1

Slide 24
Slide notes:



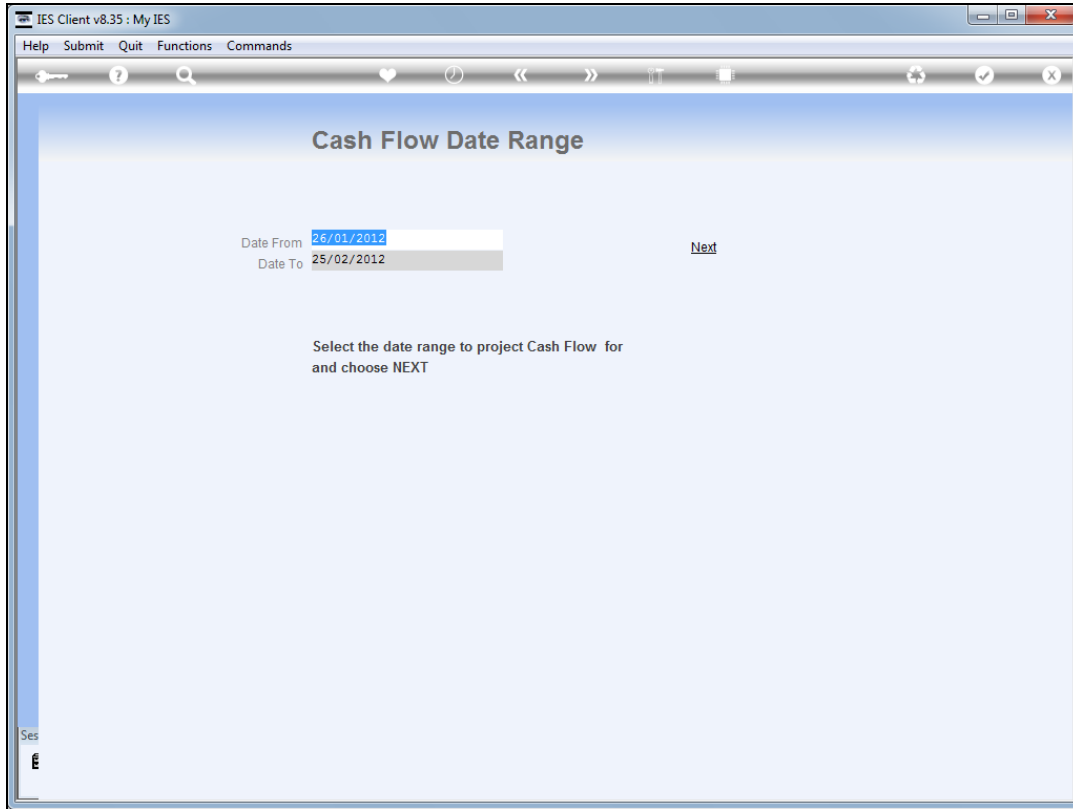
Slide 25

Slide notes: For the purpose of our demonstration, we will say that we have enough here to demonstrate our projection, and we will perform it.



Slide 26

Slide notes: A Cash Flow projection may be performed for any selected Date range.



Slide 27
Slide notes:

Firefox

file:///127.0.0.1/...dge/D1609757150.htm

file:///127.0.0.1/Bridge/D1609757150.htm

Demo Projection : From 26 JAN 2012 to 25 FEB 2012

Cash Flow projection performed 26/01/12 at 15:52

CASH ASSETS

26/01/12	Bank		50,000.00
15/02/12	Cash Value		75,000.00

REVENUE STREAMS

26/01/12	Budgeted Income	Sales	25,000.00
03/02/12	Recurring Income	Rental Unit 1002	5,000.00
15/02/12	Dated Income	Project Hoops	75,000.00

EXPENDITURE

26/01/12	Budgeted Expense	Staff Costs	-20,000.00
27/01/12	Dated Expense	Expense One Time	-5,000.00
31/01/12	Recurring Expense	Copwatch Security Services	-1,600.00
01/02/12	Recurring Expense	Office Levy	-985.00
07/02/12	Recurring Expense	Sure Insurance Co	-5,350.65
08/02/12	Dated Expense	H&H Consultation	-35,000.00
15/02/12	Recurring Expense	Top Exec	-2,501.00

CASH FLOW

Date	Type	Description	Amount	Balance
26/01/12	Cash Assets	Bank	50,000.00	50,000.00
26/01/12	Budgeted Income	Sales	25,000.00	75,000.00
26/01/12	Budgeted Expense	Staff Costs	-20,000.00	55,000.00
27/01/12	Expenditure	Expense One Time	-5,000.00	50,000.00
31/01/12	Recurring Expense	Copwatch Security Services	-1,600.00	48,400.00
01/02/12	Recurring Expense	Office Levy	-985.00	47,415.00
03/02/12	Recurring Income	Rental Unit 1002	5,000.00	52,415.00
07/02/12	Recurring Expense	Sure Insurance Co	-5,350.65	47,064.35
08/02/12	Expenditure	H&H Consultation	-35,000.00	12,064.35
15/02/12	Cash Assets	Cash Value	75,000.00	87,064.35

Slide 28

Slide notes: And here we have our demonstration result of a Cash Flow projection, based on our demo master projection.

Firefox

file:///127.0.0.1/...dge/D1609757150.htm

file:///127.0.0.1/Bridge/D1609757150.htm

Demo Projection : From 26 JAN 2012 to 25 FEB 2012

Cash Flow projection performed 26/01/12 at 15:52

CASH ASSETS

26/01/12	Bank		50,000.00
15/02/12	Cash Value		75,000.00

REVENUE STREAMS

26/01/12	Budgeted Income	Sales	25,000.00
03/02/12	Recurring Income	Rental Unit 1002	5,000.00
15/02/12	Dated Income	Project Hoops	75,000.00

EXPENDITURE

26/01/12	Budgeted Expense	Staff Costs	-20,000.00
27/01/12	Dated Expense	Expense One Time	-5,000.00
31/01/12	Recurring Expense	Copwatch Security Services	-1,600.00
01/02/12	Recurring Expense	Office Levy	-985.00
07/02/12	Recurring Expense	Sure Insurance Co	-5,350.65
08/02/12	Dated Expense	H&H Consultation	-35,000.00
15/02/12	Recurring Expense	Top Exec	-2,501.00

CASH FLOW

Date	Type	Description	Amount	Balance
26/01/12	Cash Assets	Bank	50,000.00	50,000.00
26/01/12	Budgeted Income	Sales	25,000.00	75,000.00
26/01/12	Budgeted Expense	Staff Costs	-20,000.00	55,000.00
27/01/12	Expenditure	Expense One Time	-5,000.00	50,000.00
31/01/12	Recurring Expense	Copwatch Security Services	-1,600.00	48,400.00
01/02/12	Recurring Expense	Office Levy	-985.00	47,415.00
03/02/12	Recurring Income	Rental Unit 1002	5,000.00	52,415.00
07/02/12	Recurring Expense	Sure Insurance Co	-5,350.65	47,064.35
08/02/12	Expenditure	H&H Consultation	-35,000.00	12,064.35
15/02/12	Cash Assets	Cash Value	75,000.00	87,064.35

Slide 29
Slide notes: