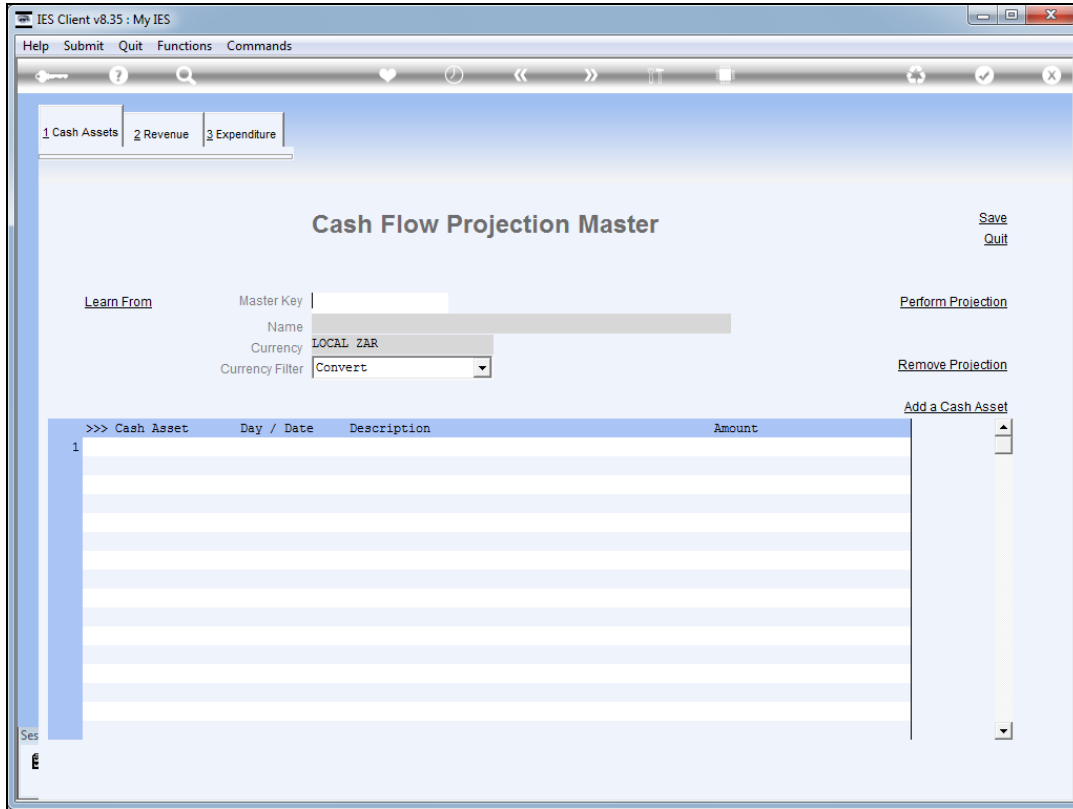


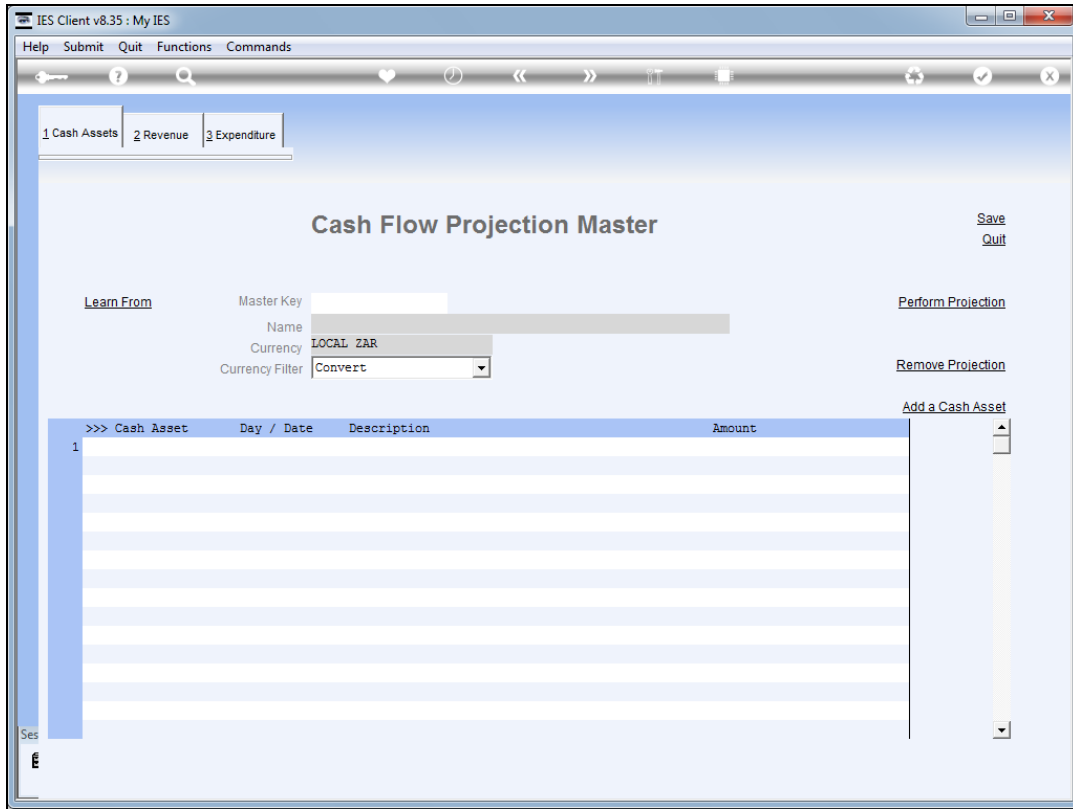
Slide 1

Slide notes: A useful "Learn From" function provides us with an easy way to copy entries from one Projection master to another.

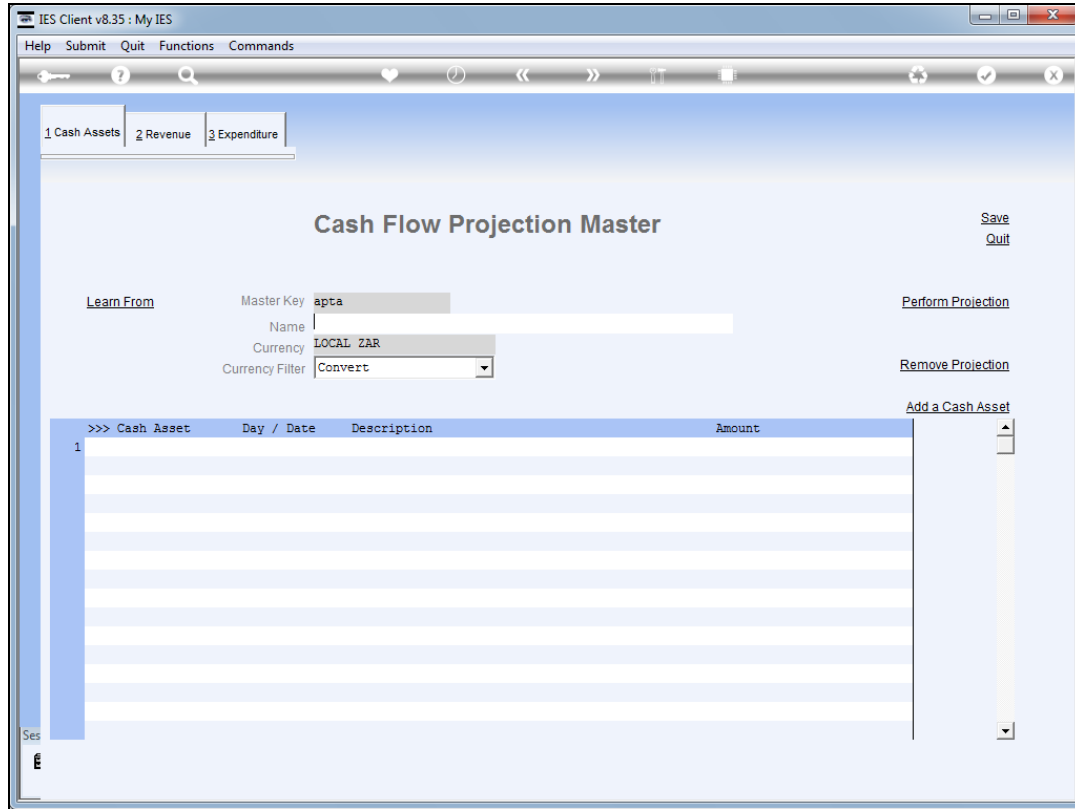


Slide 2

Slide notes: Whether we are working with a brand new or existing projection, we can learn elements from another projection master.

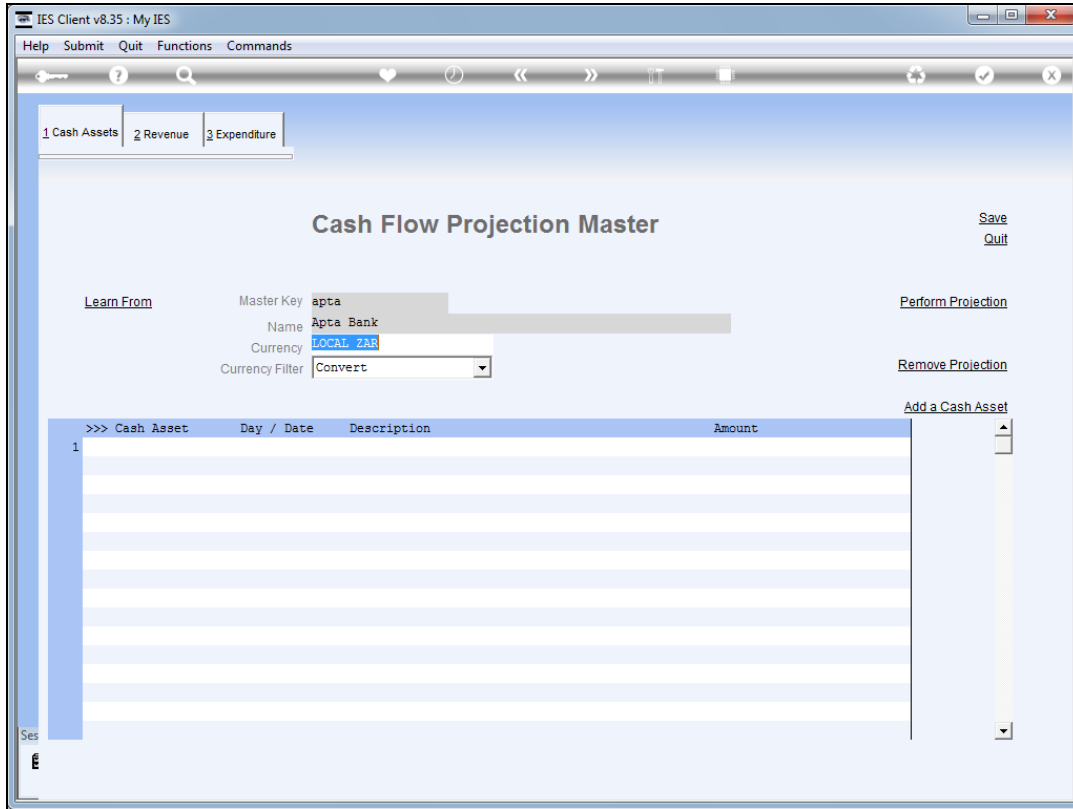


Slide 3
Slide notes:



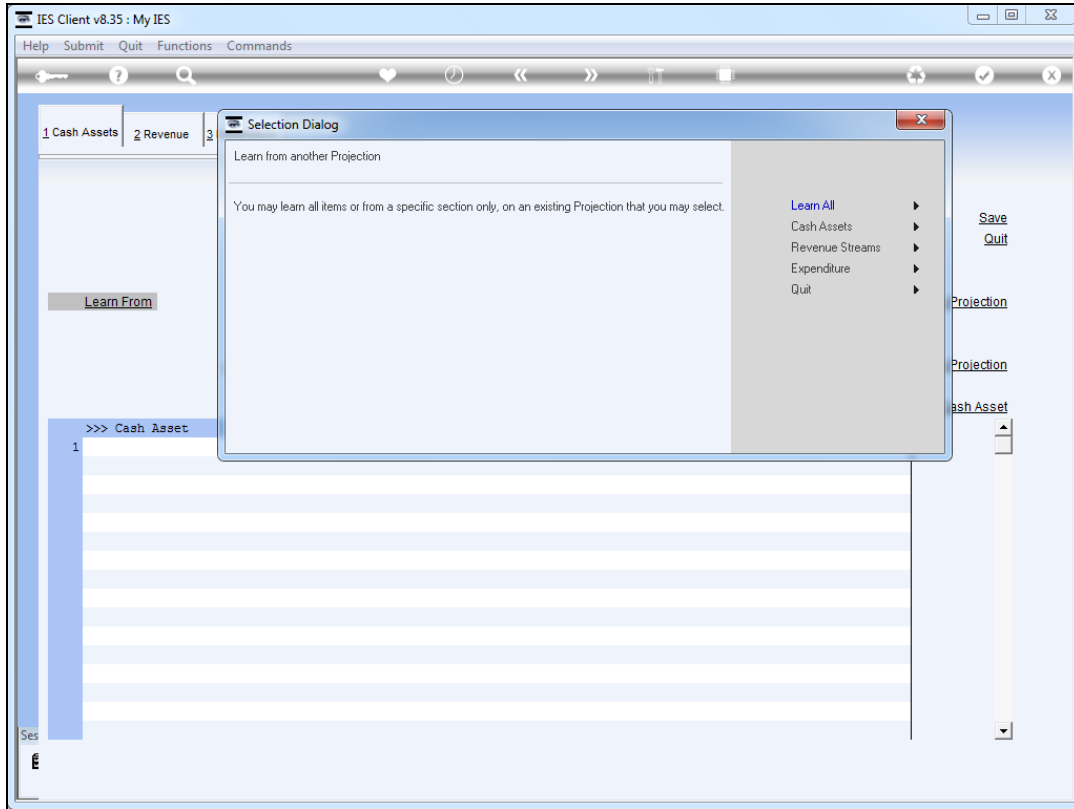
Slide 4

Slide notes: In this example, we are starting a brand new projection master.



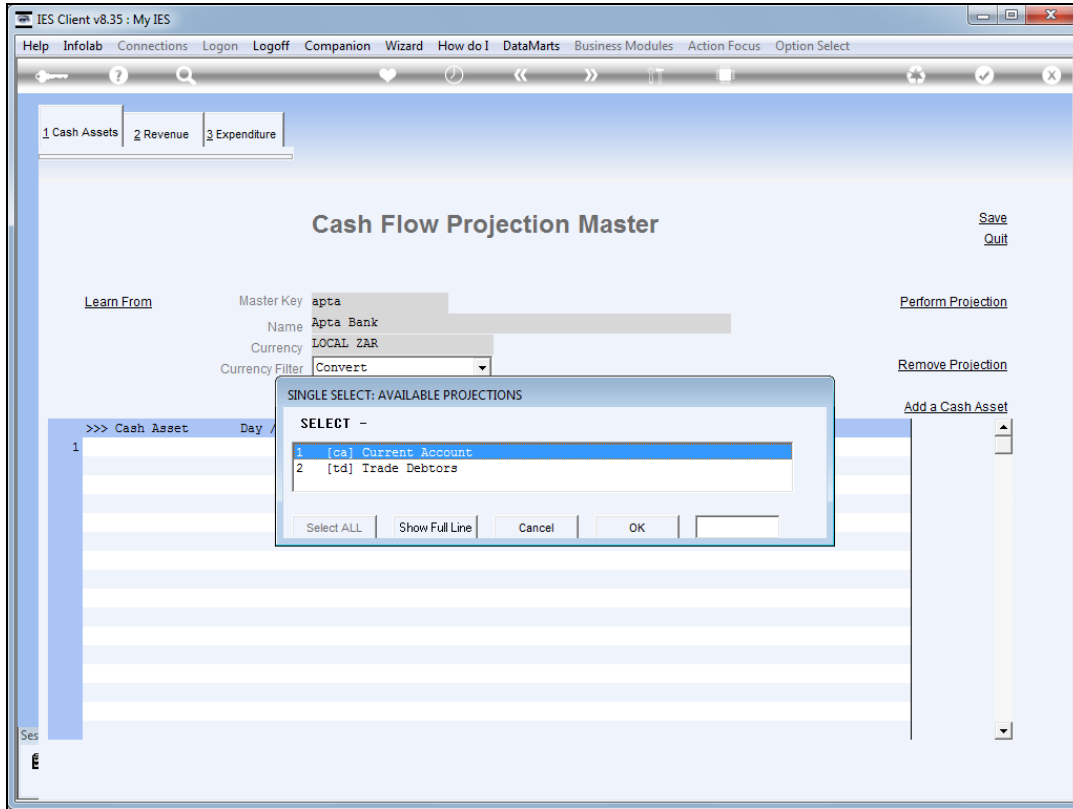
Slide 5

Slide notes: And we choose "Learn From".



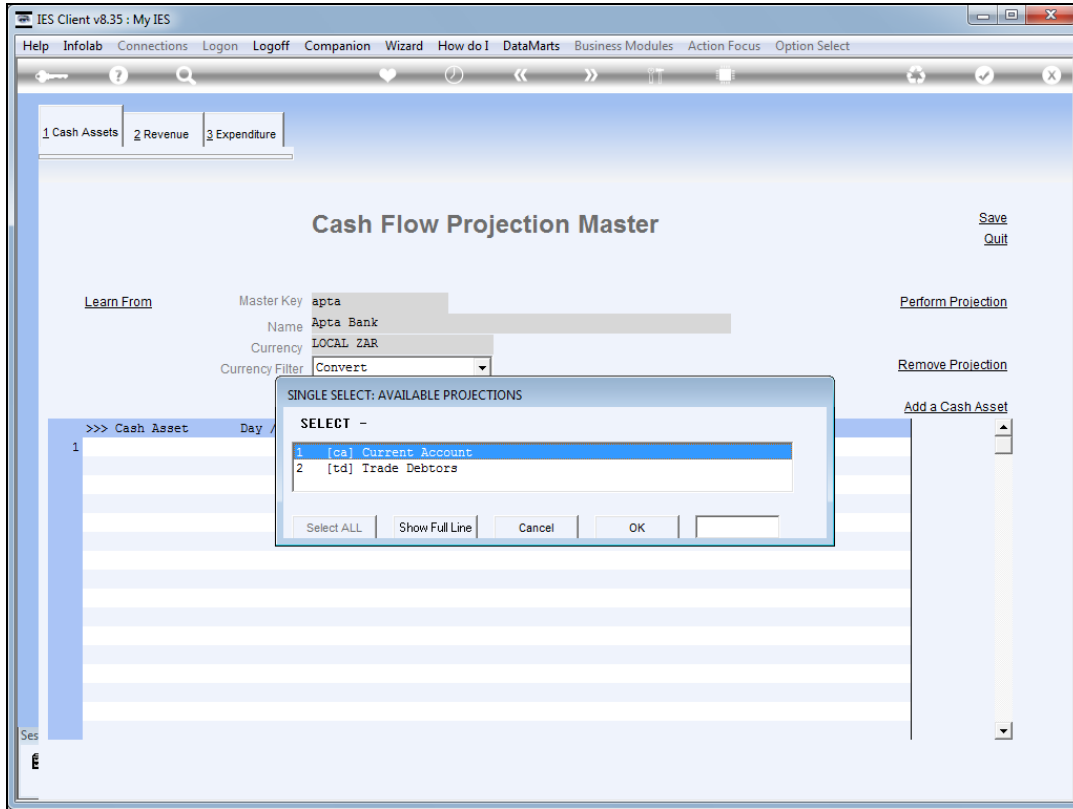
Slide 6

Slide notes: We have the choice to learn all elements from a selected projection master, or 1 of the primary sections only.

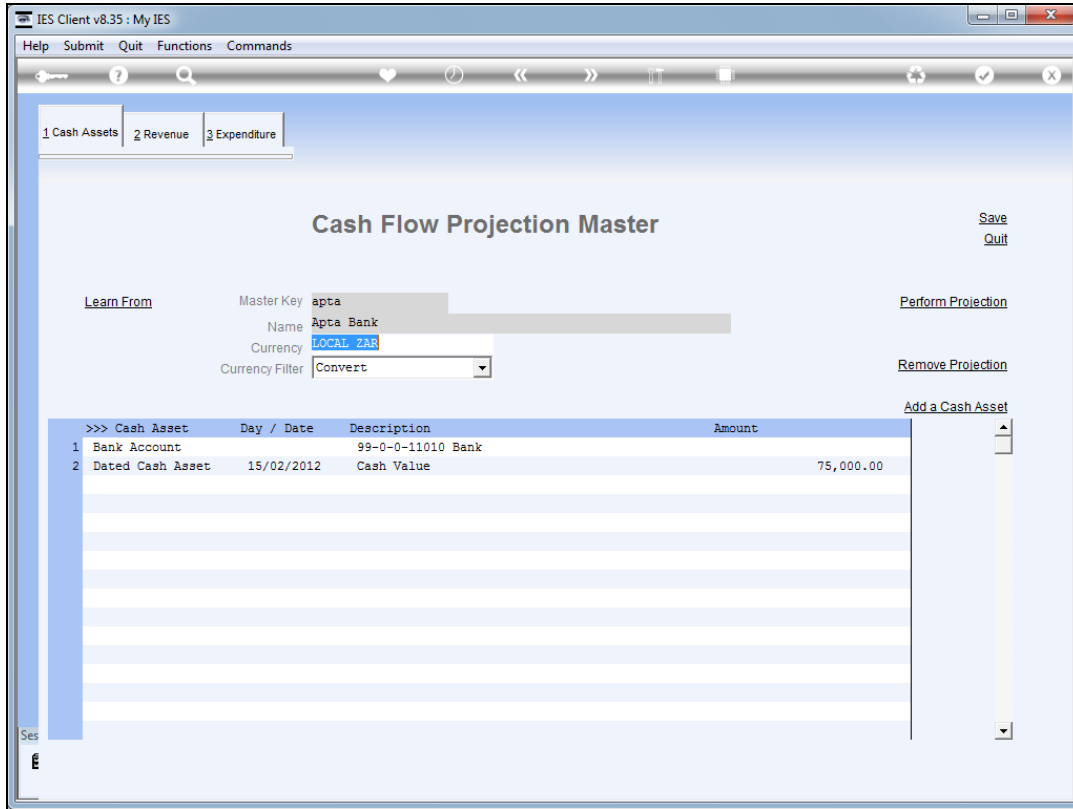


Slide 7

Slide notes: Then we select the projection master to learn from.

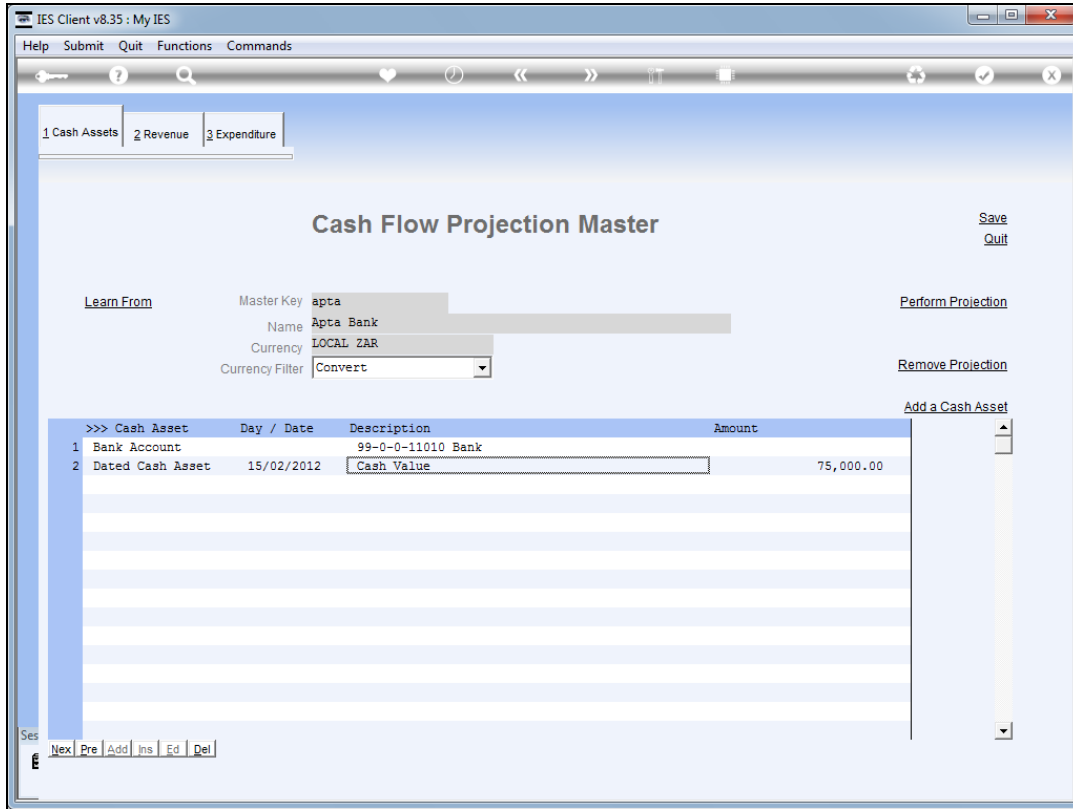


Slide 8
Slide notes:

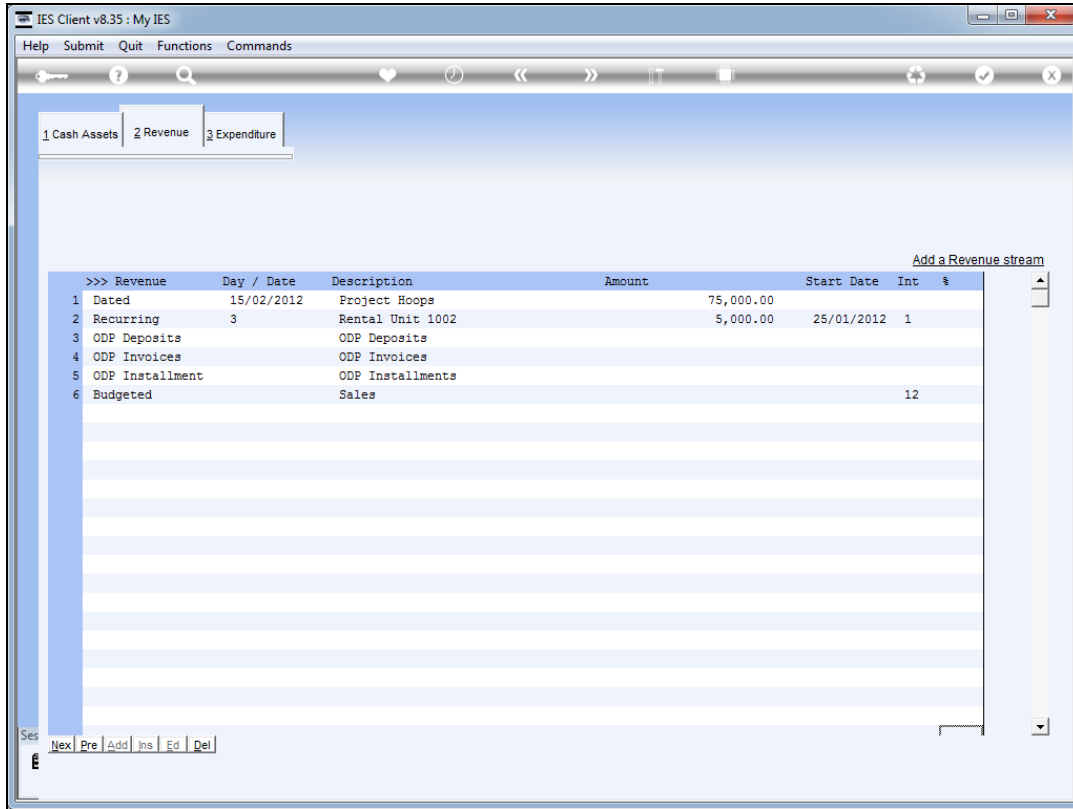


Slide 9

Slide notes: And it's done. Here we can see all the elements that we have learnt from another projection.



Slide 10
Slide notes:



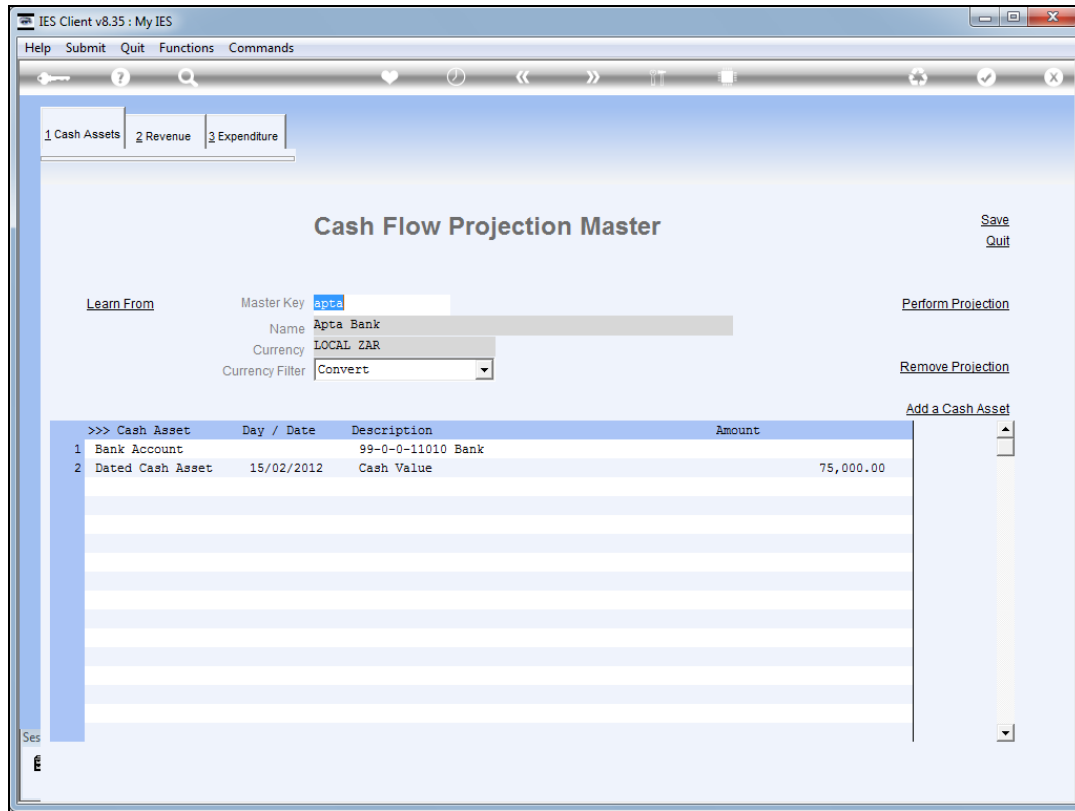
Slide 11

Slide notes: We can retain these elements as they are, or modify some of them, remove others, etc.

The screenshot shows the IES Client v8.35: My IES application window. At the top, there is a menu bar with 'Help', 'Submit', 'Quit', 'Functions', and 'Commands'. Below the menu bar is a toolbar with various icons. A tabbed interface at the top shows three tabs: '1 Cash Assets', '2 Revenue', and '3 Expenditure', with '3 Expenditure' being the active tab. The main area displays a table of expenditure records. The table has columns for 'Expenditure', 'Day / Date', 'Description', 'Amount', 'Start Date', and 'Int'. There are six rows of data. To the right of the table is a vertical scroll bar and a button labeled 'Add an Expense'. At the bottom left, there is a status bar with the text 'Ses' and a set of navigation buttons: 'Nex', 'Pre', 'Add', 'Ins', 'Ed', 'Del'.

>>> Expenditure	Day / Date	Description	Amount	Start Date	Int
1 Recurring	7	Sure Insurance Co	5,350.65	25/01/2012	1
2 Recurring	31	Copwatch Security Services	1,600.00	25/01/2012	1
3 Recurring	1	Office Levy	985.00	25/01/2012	1
4 Budgeted		Staff Costs			12
5 Dated	08/02/2012	H&H Consultation	35,000.00		
6 Recurring	15	Top Exec	2,501.00	26/01/2012	1

Slide 12
Slide notes:



Slide 13

Slide notes: And from this basis, we can now continue by adding other new elements as we may require.