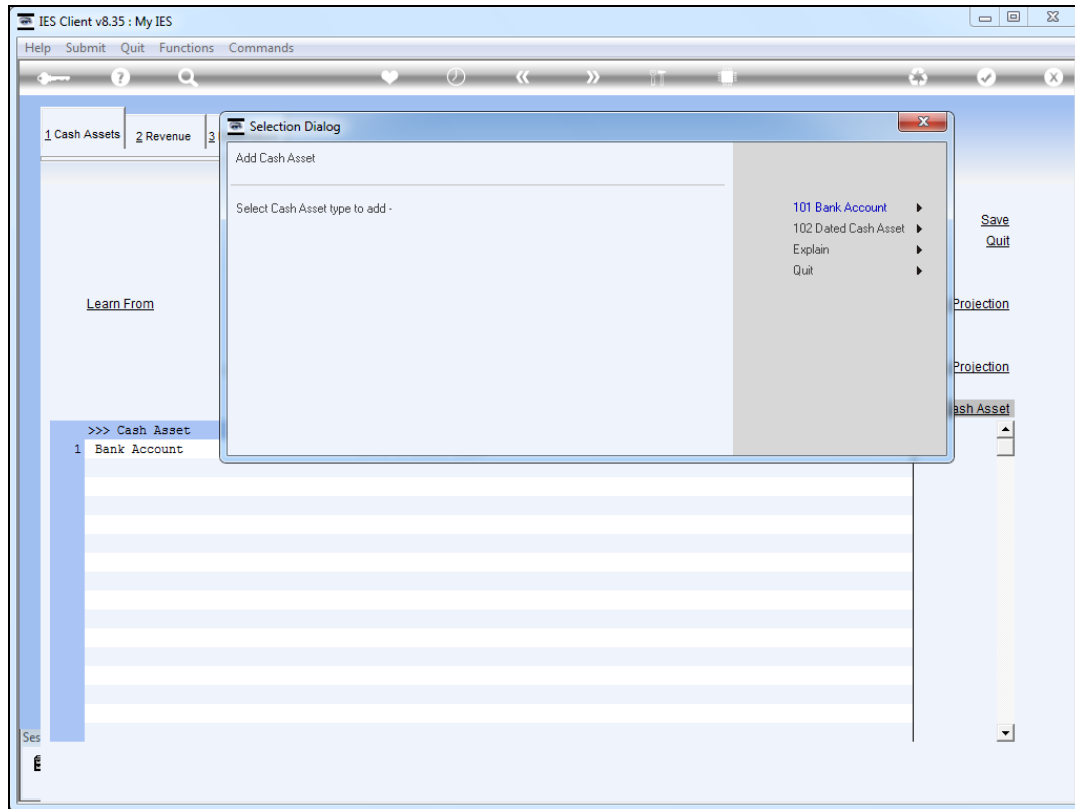


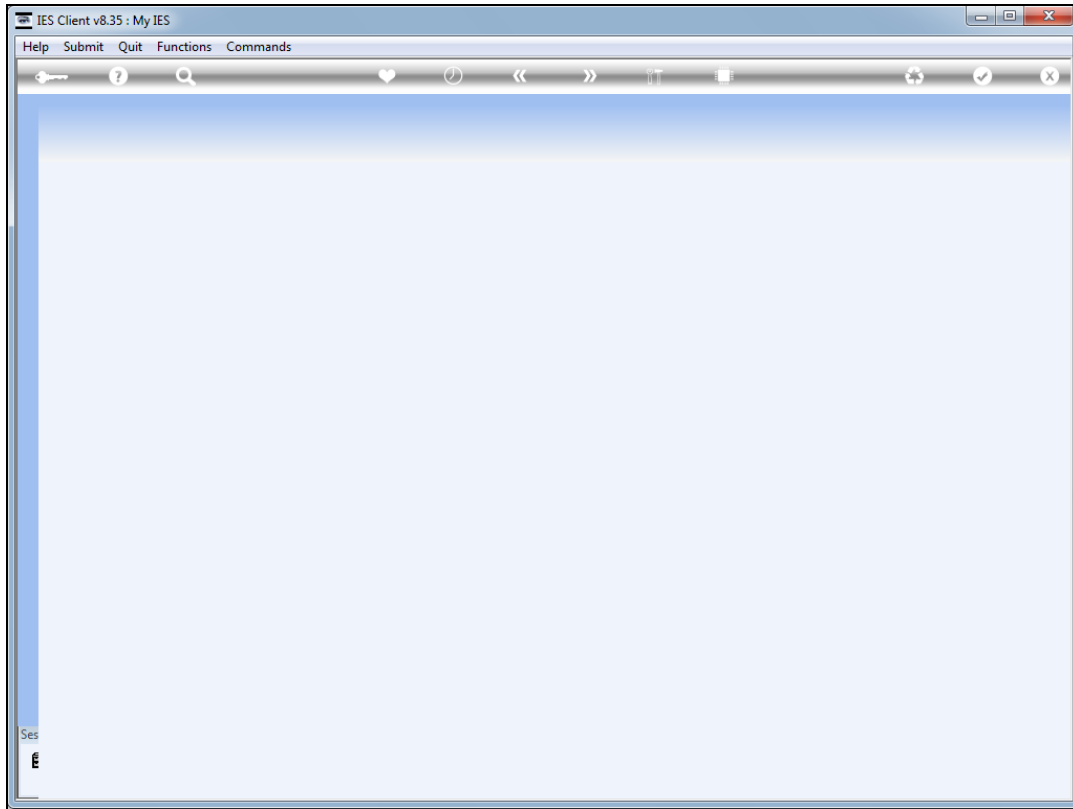
Slide 1

Slide notes: The Cash Assets group can include Dated Cash Assets, and a Dated Cash Asset can be of any description, providing a Value at a selected date.

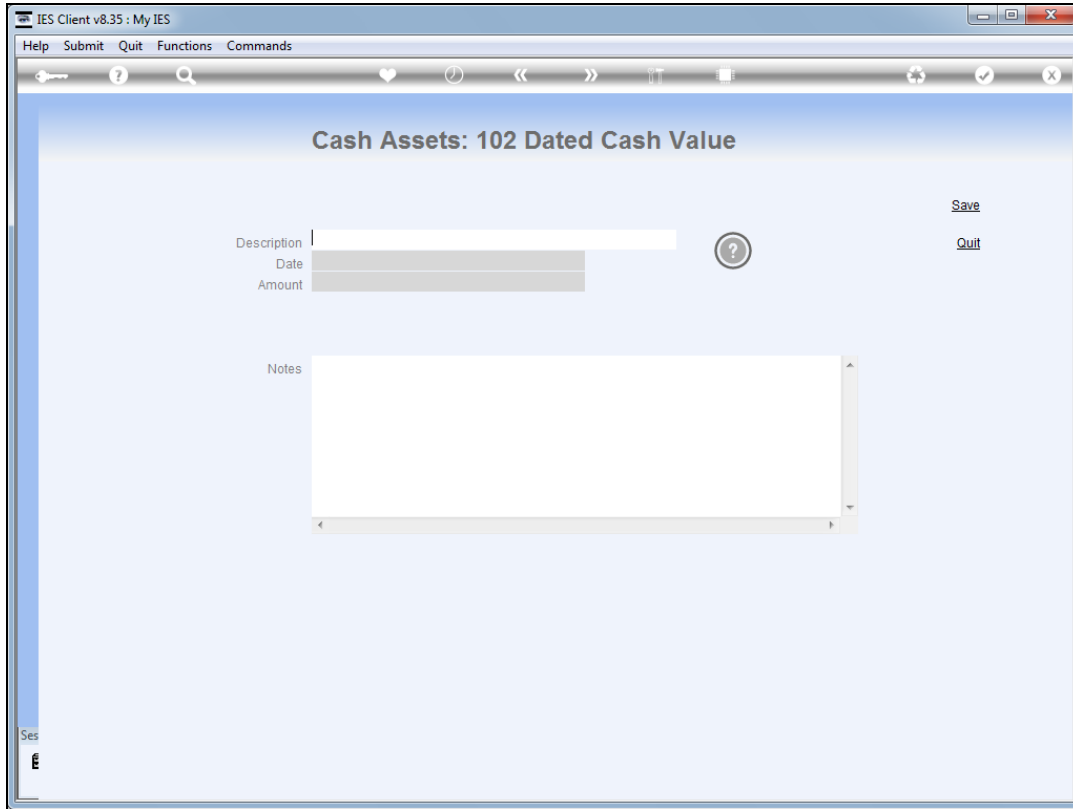


Slide 2

Slide notes: We use option 102 to add a Dated Cash Asset.

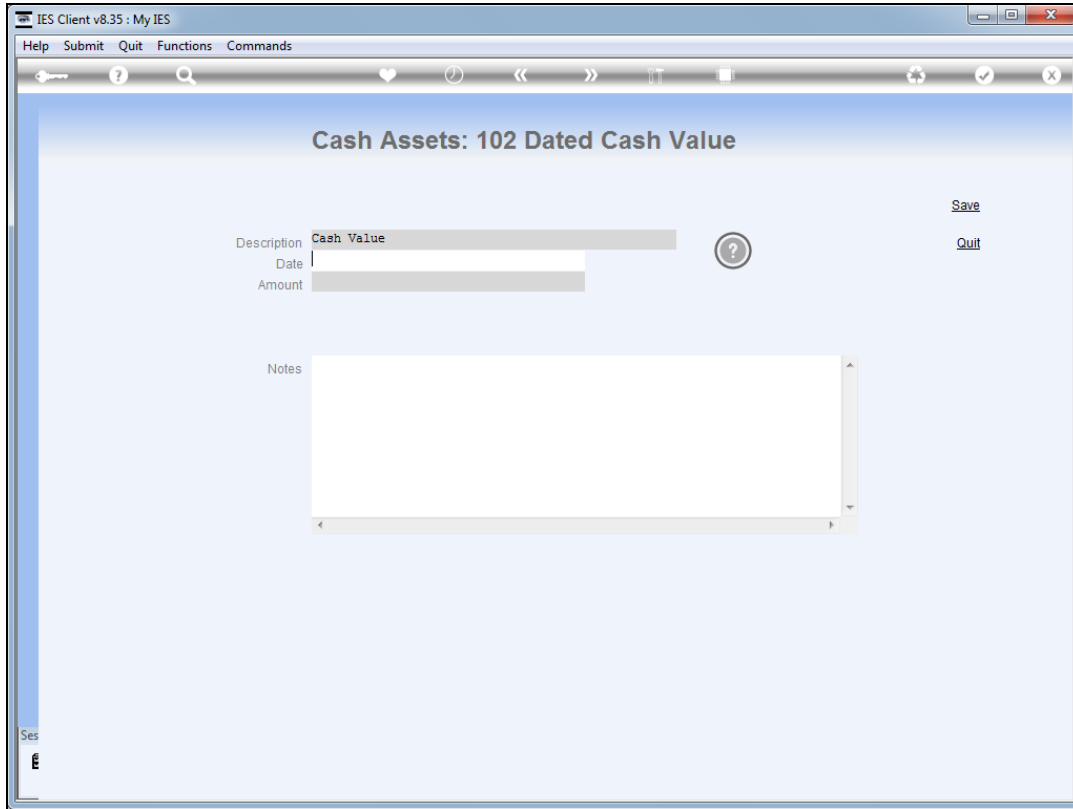


Slide 3
Slide notes:



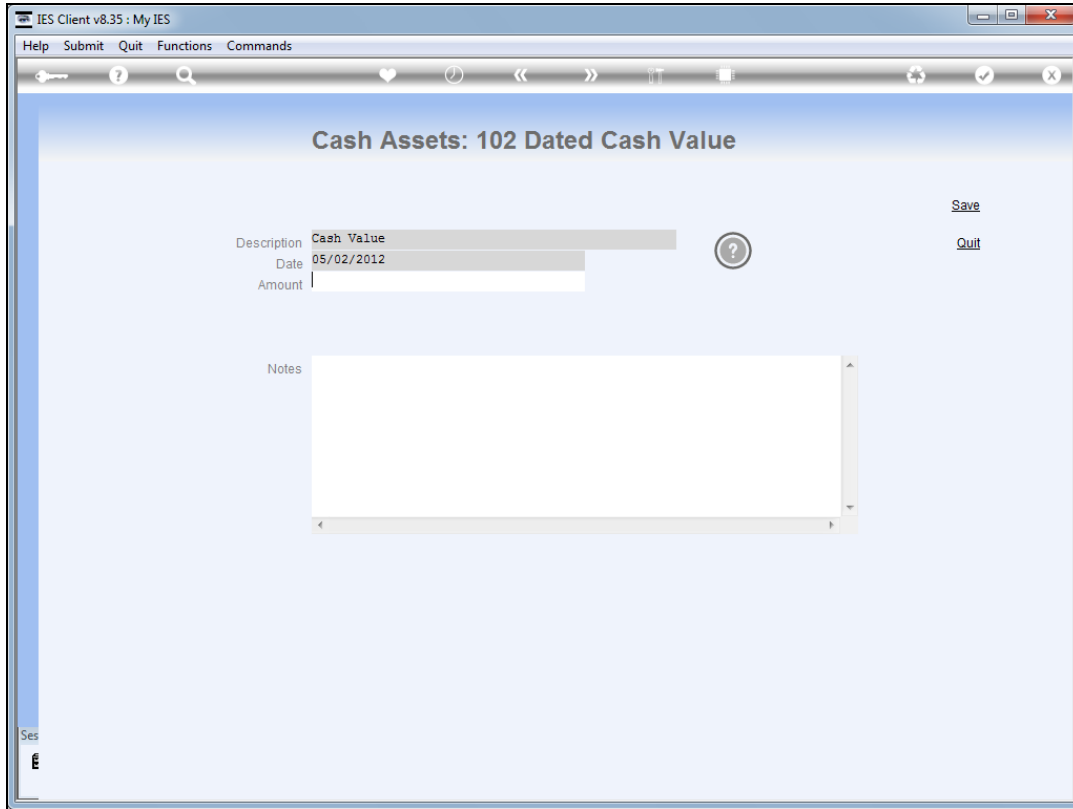
Slide 4

Slide notes: The description is of our own choosing.

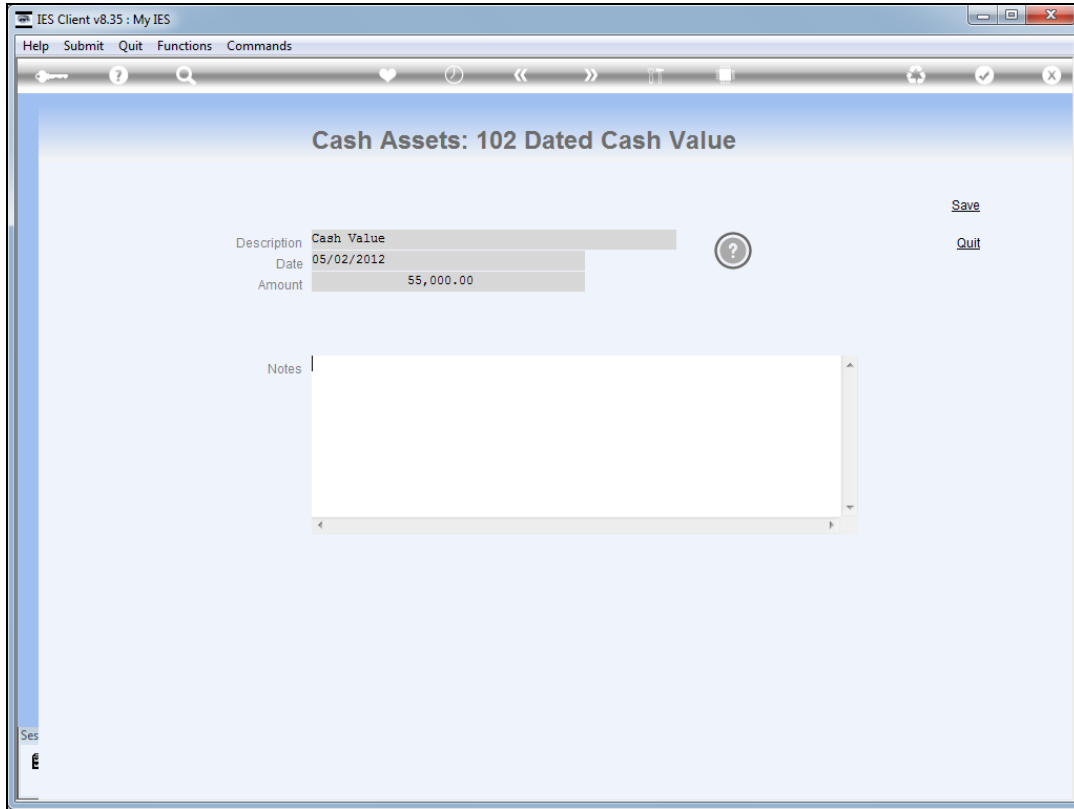


Slide 5

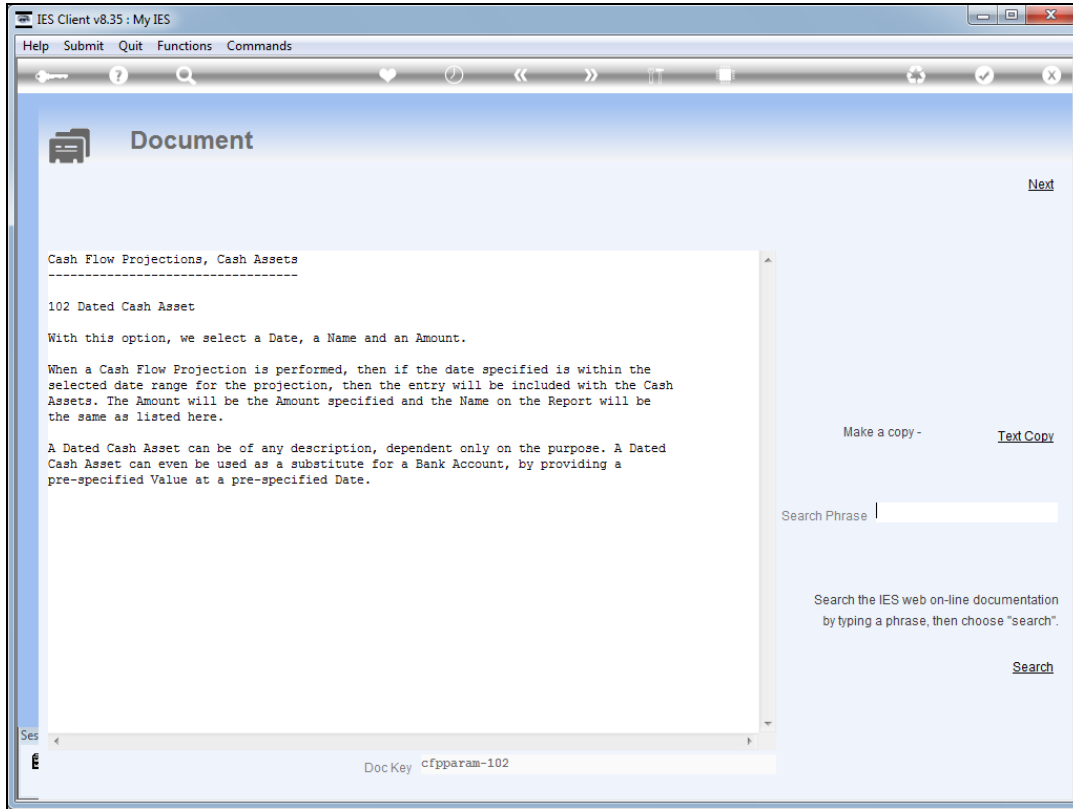
Slide notes: The Date we specify is the date at which this Value is provided to the Cash Flow.



Slide 6
Slide notes:

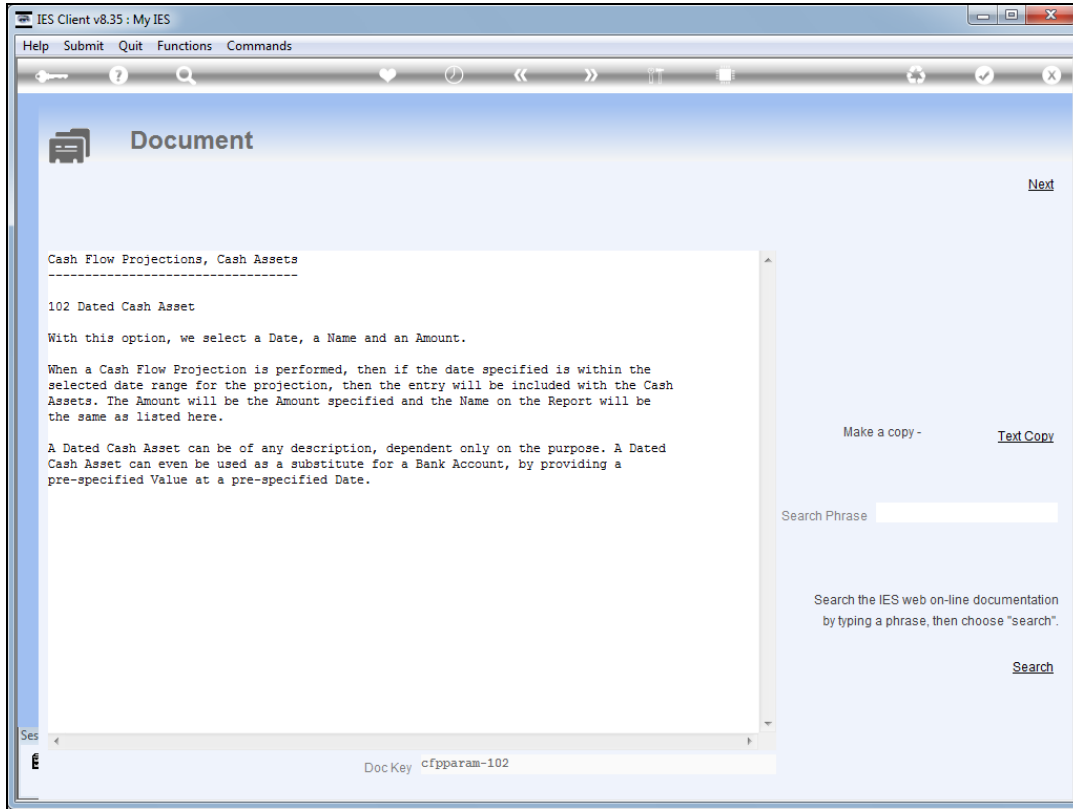


Slide 7
Slide notes:

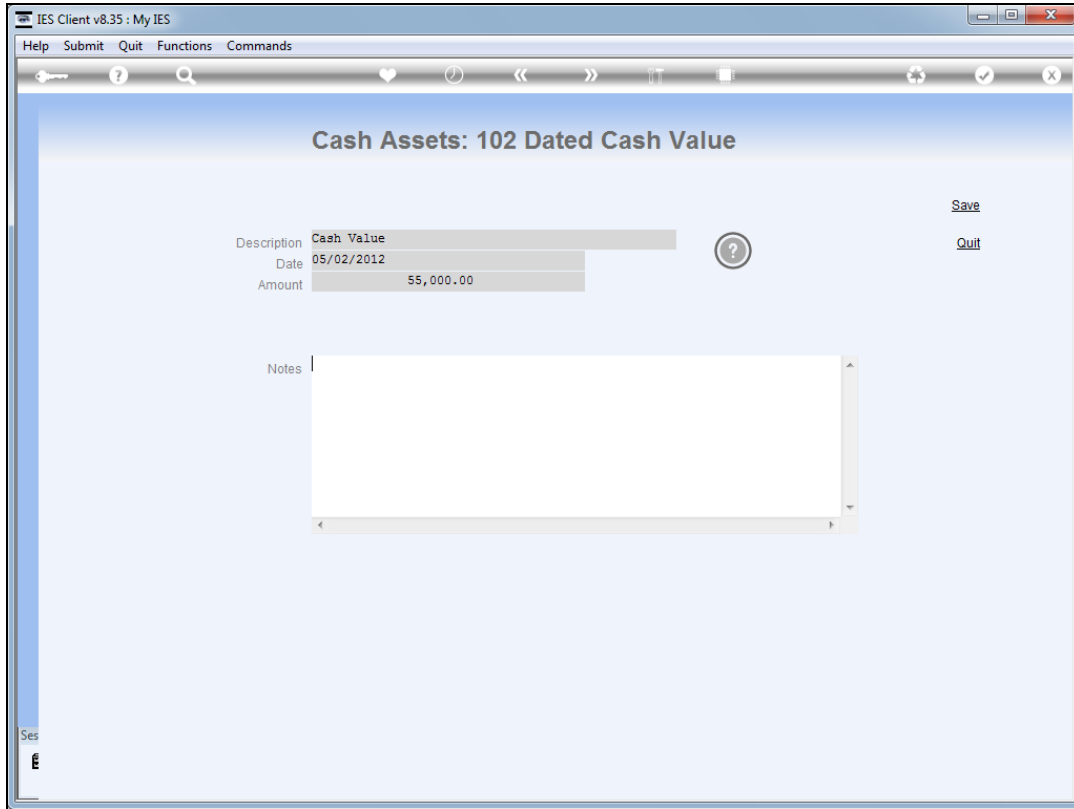


Slide 8

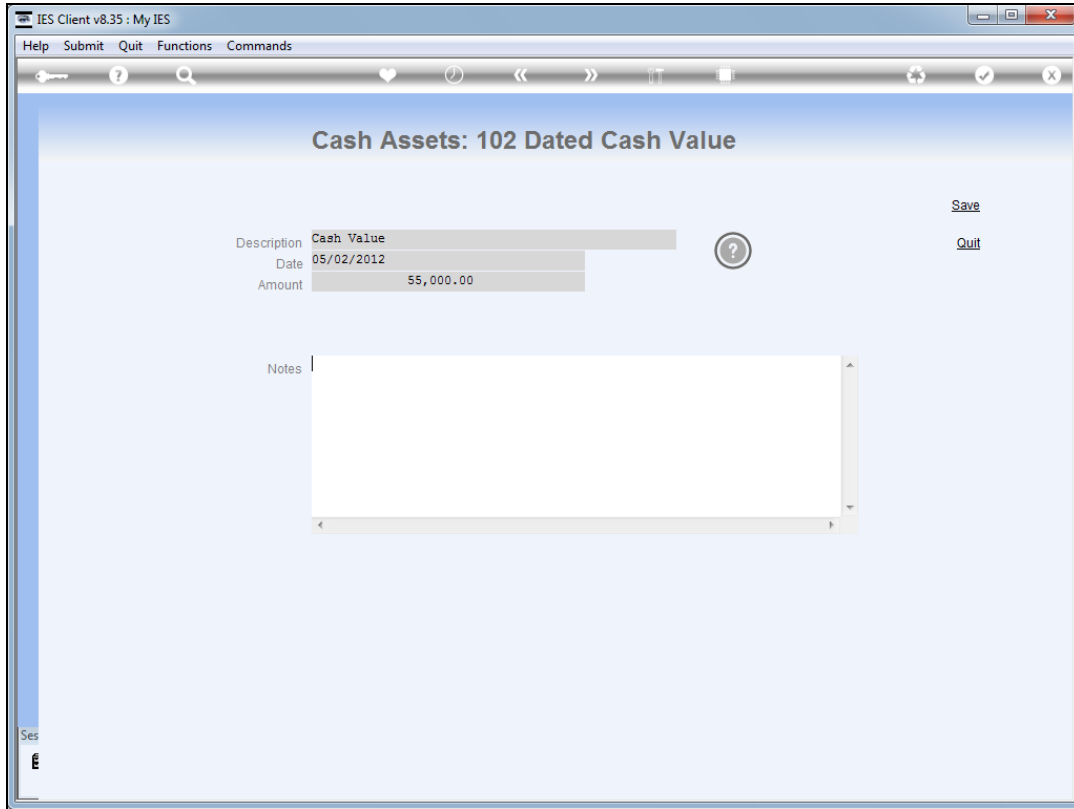
Slide notes: Unlike Bank Accounts, which provide their real-time Balances at the start of the Cash Flow projection, a Dated Cash Asset will provide a specific stated Value at a specific stated Date. This is very useful, and we can have multiple Dated Cash Assets on a projection, if required.



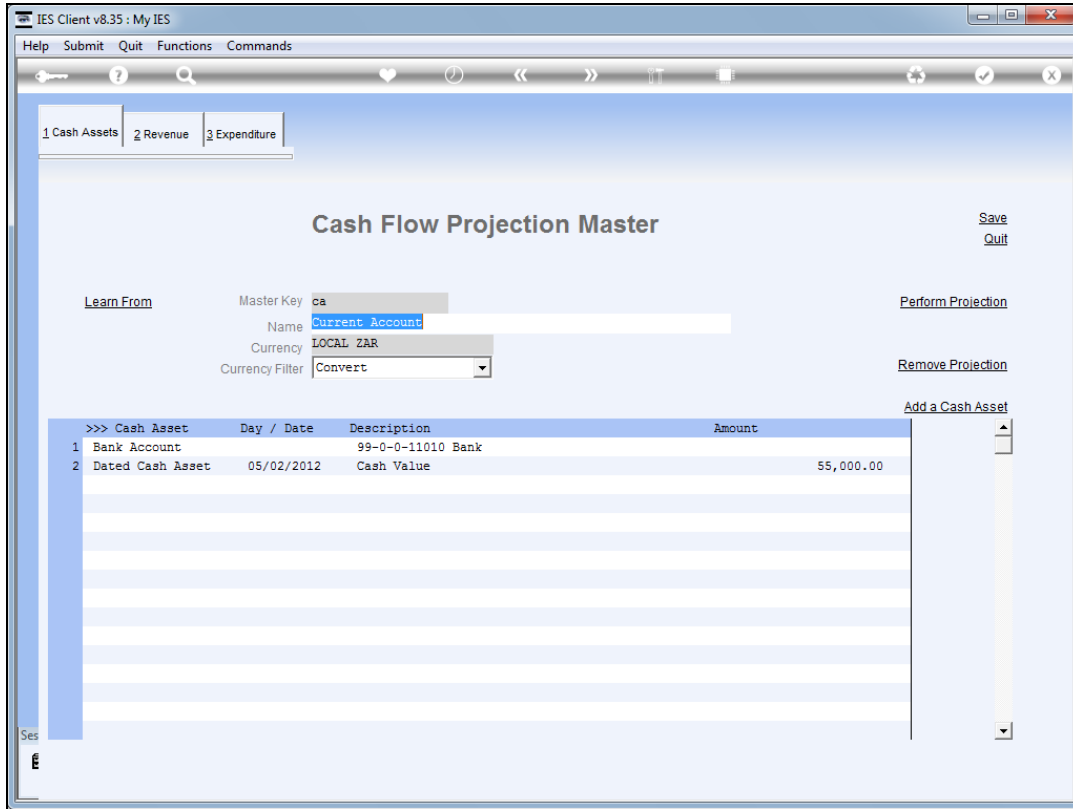
Slide 9
Slide notes:



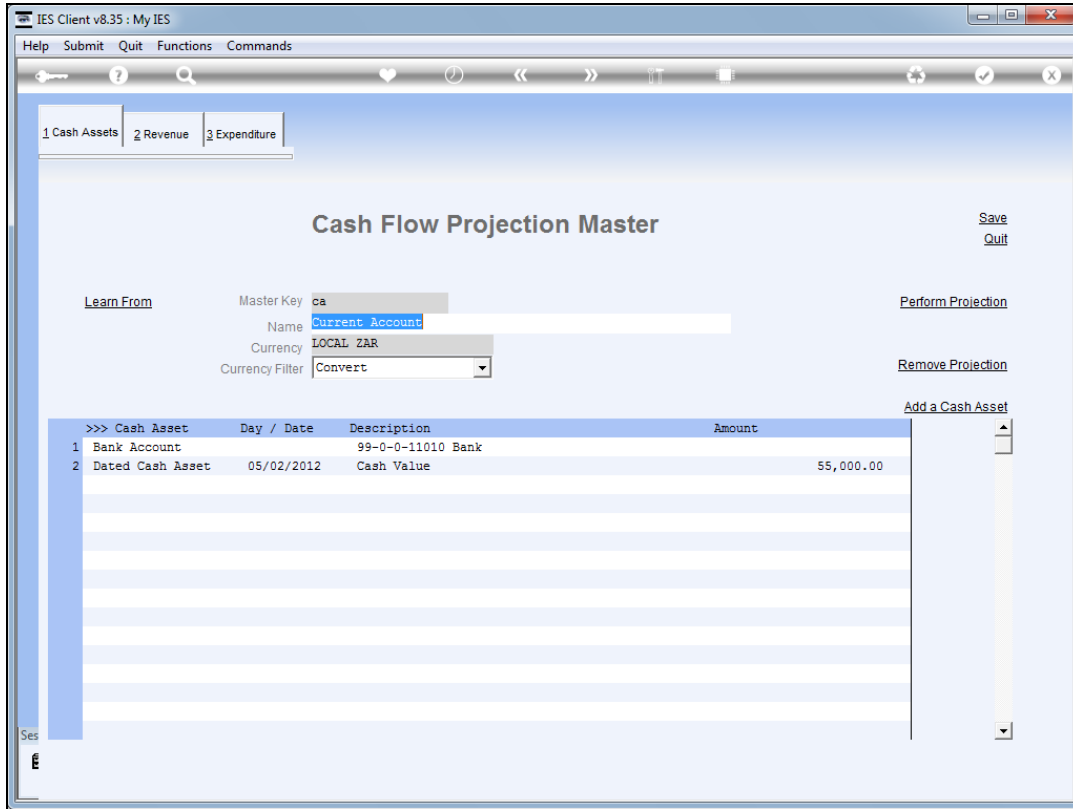
Slide 10
Slide notes:



Slide 11
Slide notes:

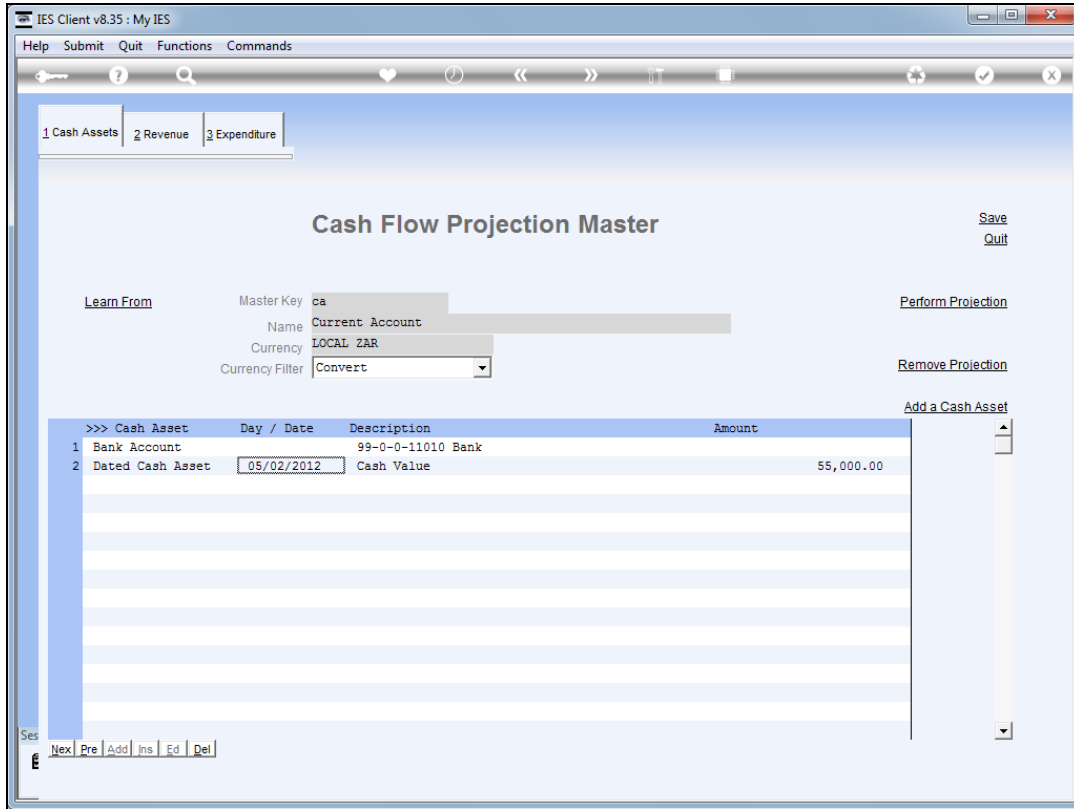


Slide 12
Slide notes:

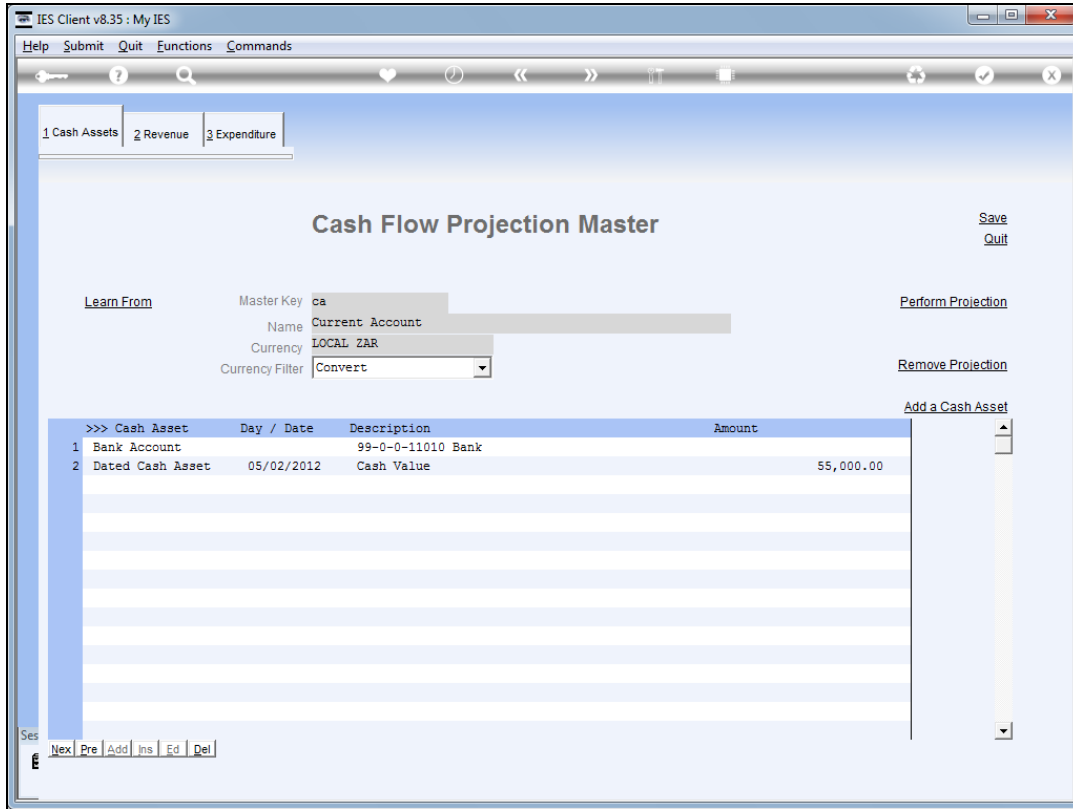


Slide 13

Slide notes: For our example, we note the specified date for this dated Cash Asset.

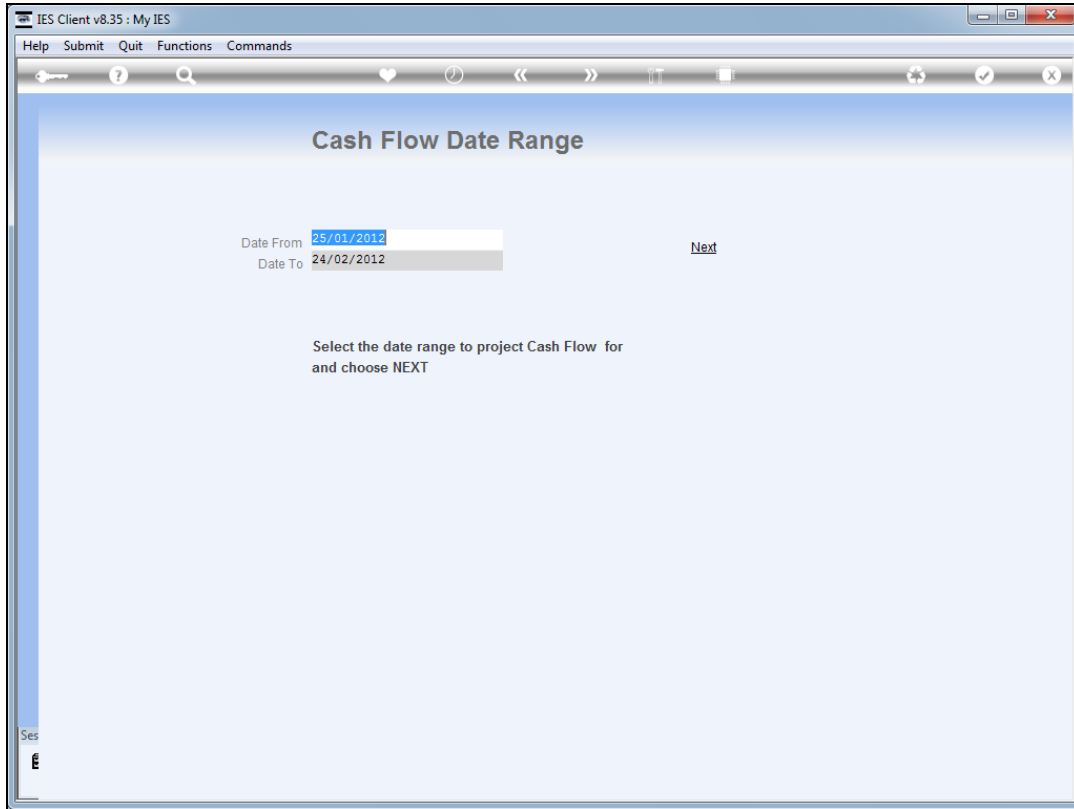


Slide 14
Slide notes:



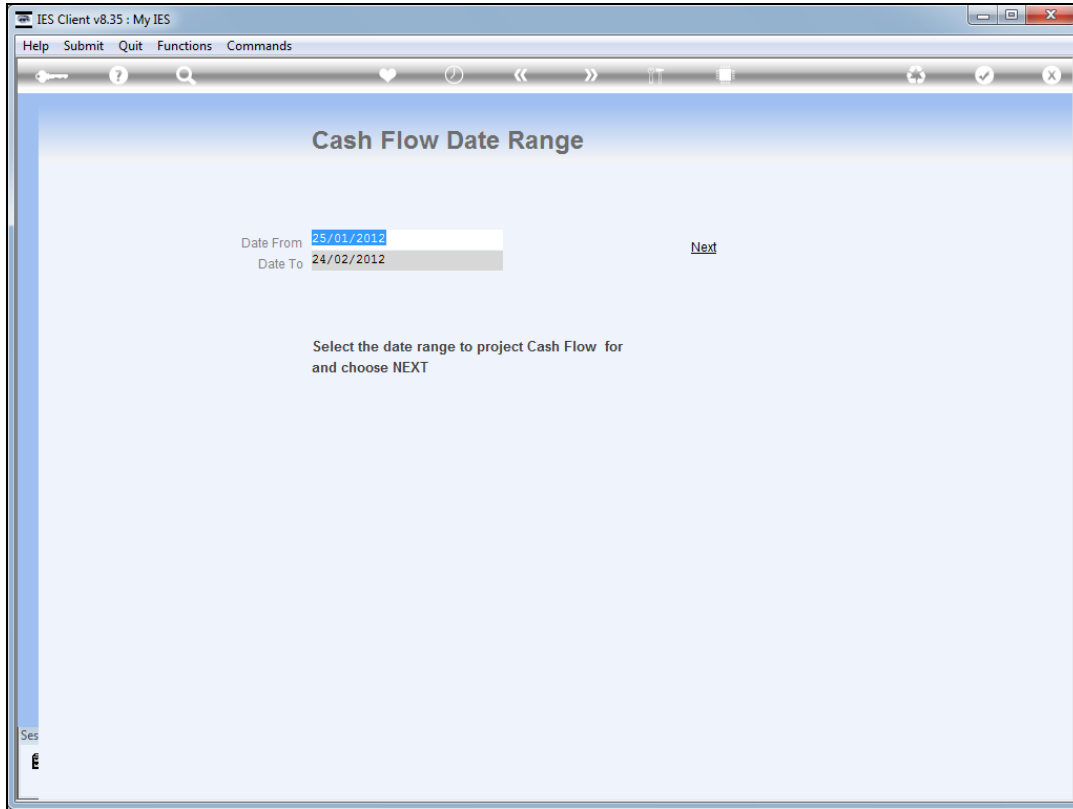
Slide 15

Slide notes: When we perform the projected Cash Flow, we will see the impact of this Cash Asset at the selected date.

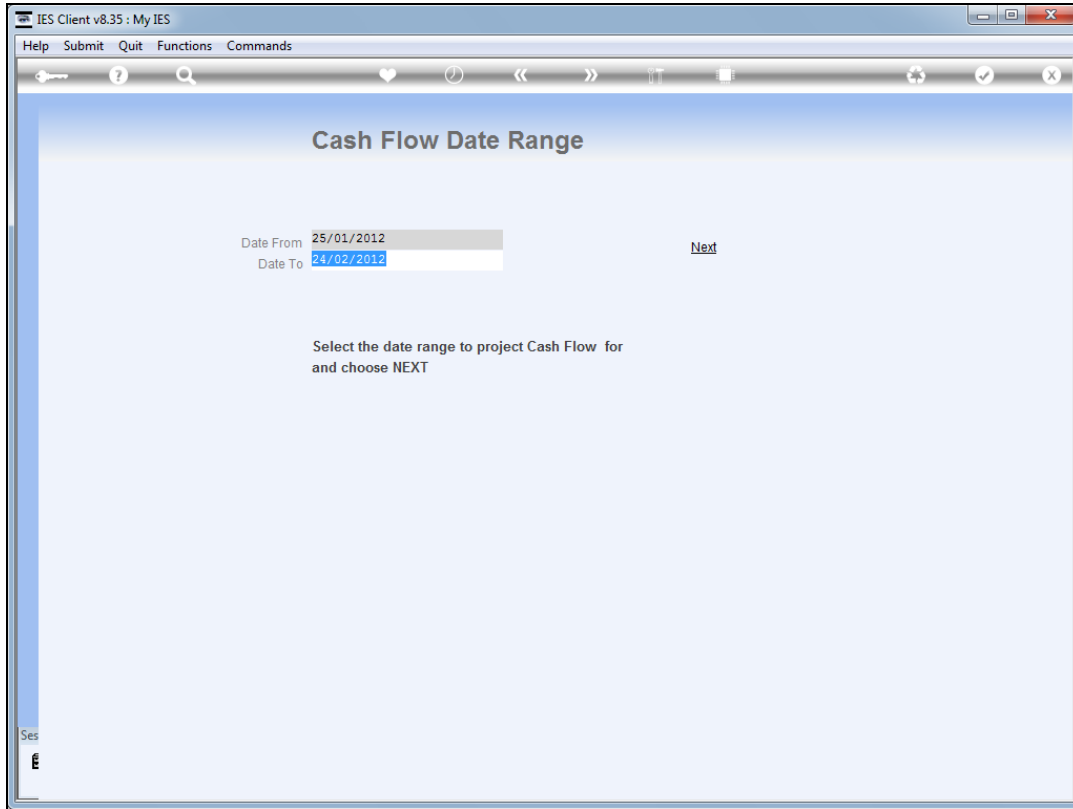


Slide 16

Slide notes: The Dated Cash Asset will only be included if it's date fits within the date range for which we perform the projection.



Slide 17
Slide notes:



Slide 18
Slide notes:

Current Account : From 25 JAN 2012 to 24 FEB 2012

Cash Flow projection performed 25/01/12 at 12:11.

CASH ASSETS

25/01/12	Bank	50,000.00
05/02/12	Cash Value	55,000.00

REVENUE STREAMS

EXPENDITURE

31/01/12	Recurring Expense	Copwatch Security Services	-1,600.00
01/02/12	Recurring Expense	Office Levy	-985.00
07/02/12	Recurring Expense	Sure Insurance Co	-5,350.65
15/02/12	Recurring Expense	Top Exec	-2,501.00

CASH FLOW

Date	Type	Description	Amount	Balance
25/01/12	Cash Assets	Bank	50,000.00	50,000.00
31/01/12	Recurring Expense	Copwatch Security Services	-1,600.00	48,400.00
01/02/12	Recurring Expense	Office Levy	-985.00	47,415.00
05/02/12	Cash Assets	Cash Value	55,000.00	102,415.00
07/02/12	Recurring Expense	Sure Insurance Co	-5,350.65	97,064.35
15/02/12	Recurring Expense	Top Exec	-2,501.00	94,563.35

Slide 19

Slide notes: And here we see that unlike the Bank Account which appears at the start of the projection, a Dated Cash Asset appears at it's predefined Date, and impacts the Cash Flow balance at this point.

Firefox

file:///127.0.0.1/...dge/D1609643918.htm

file:///127.0.0.1/Bridge/D1609643918.htm

Current Account : From 25 JAN 2012 to 24 FEB 2012

Cash Flow projection performed 25/01/12 at 12:11.

CASH ASSETS

25/01/12	Bank		50,000.00
05/02/12	Cash Value		55,000.00

REVENUE STREAMS

EXPENDITURE

31/01/12	Recurring Expense	Copwatch Security Services	-1,600.00
01/02/12	Recurring Expense	Office Levy	-985.00
07/02/12	Recurring Expense	Sure Insurance Co	-5,350.65
15/02/12	Recurring Expense	Top Exec	-2,501.00

CASH FLOW

Date	Type	Description	Amount	Balance
25/01/12	Cash Assets	Bank	50,000.00	50,000.00
31/01/12	Recurring Expense	Copwatch Security Services	-1,600.00	48,400.00
01/02/12	Recurring Expense	Office Levy	-985.00	47,415.00
05/02/12	Cash Assets	Cash Value	55,000.00	102,415.00
07/02/12	Recurring Expense	Sure Insurance Co	-5,350.65	97,064.35
15/02/12	Recurring Expense	Top Exec	-2,501.00	94,563.35

Slide 20
Slide notes:

Firefox

file:///127.0.0.1/...dge/D1609643918.htm

file:///127.0.0.1/Bridge/D1609643918.htm

Current Account : From 25 JAN 2012 to 24 FEB 2012

Cash Flow projection performed 25/01/12 at 12:11.

CASH ASSETS

25/01/12	Bank	50,000.00
05/02/12	Cash Value	55,000.00

REVENUE STREAMS

EXPENDITURE

31/01/12	Recurring Expense	Copwatch Security Services	-1,600.00
01/02/12	Recurring Expense	Office Levy	-985.00
07/02/12	Recurring Expense	Sure Insurance Co	-5,350.65
15/02/12	Recurring Expense	Top Exec	-2,501.00

CASH FLOW

Date	Type	Description	Amount	Balance
25/01/12	Cash Assets	Bank	50,000.00	50,000.00
31/01/12	Recurring Expense	Copwatch Security Services	-1,600.00	48,400.00
01/02/12	Recurring Expense	Office Levy	-985.00	47,415.00
05/02/12	Cash Assets	Cash Value	55,000.00	102,415.00
07/02/12	Recurring Expense	Sure Insurance Co	-5,350.65	97,064.35
15/02/12	Recurring Expense	Top Exec	-2,501.00	94,563.35

Slide 21
 Slide notes: