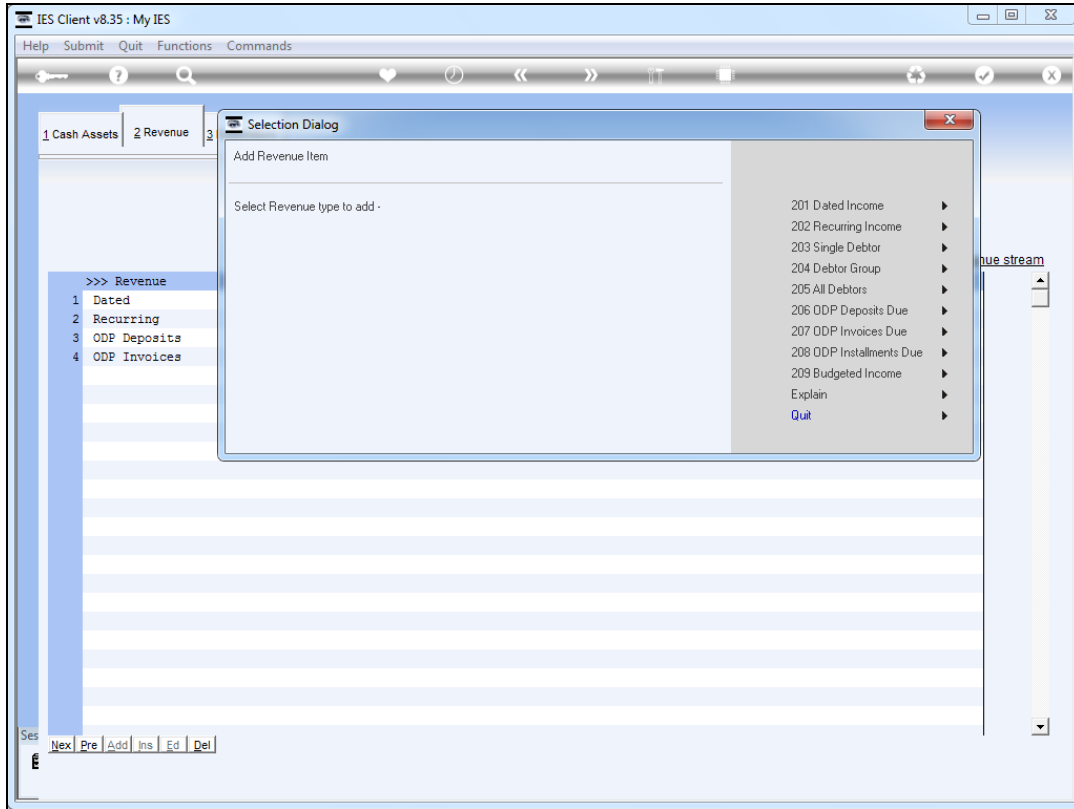


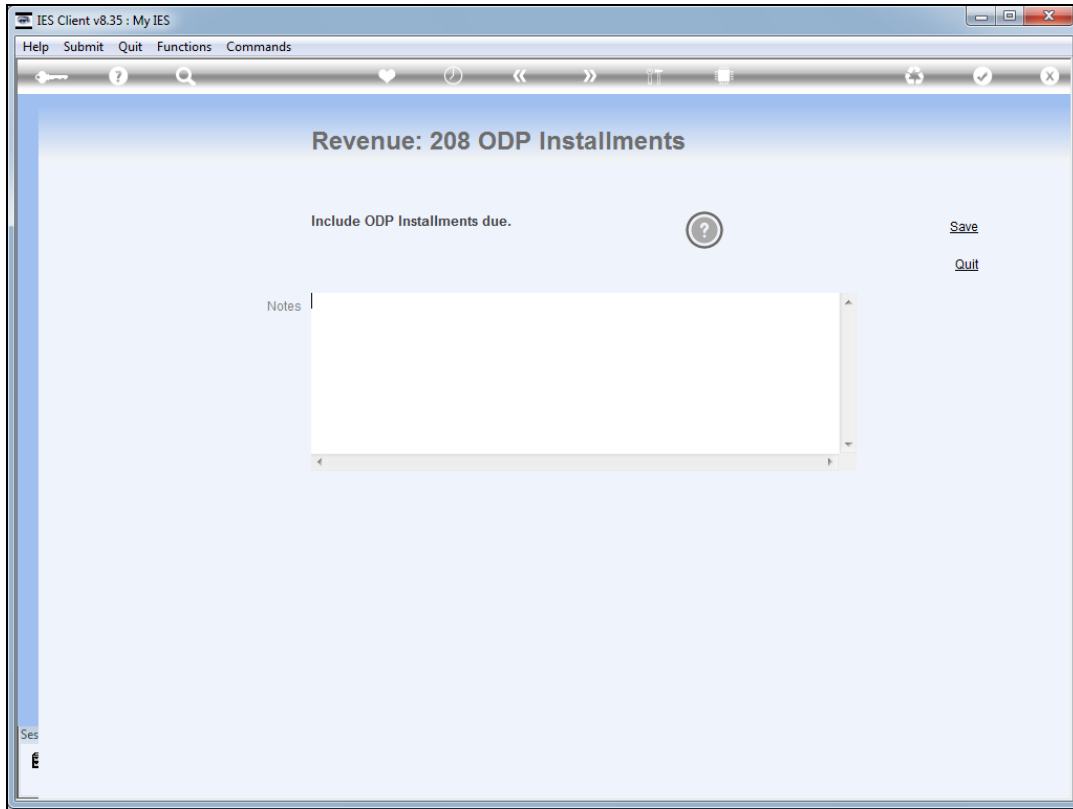
Slide 1

Slide notes: ODP is a Revenue stream based on Retail contracts with Customers. These contracts can include Deposits, Installments and Invoices Due at certain dates.



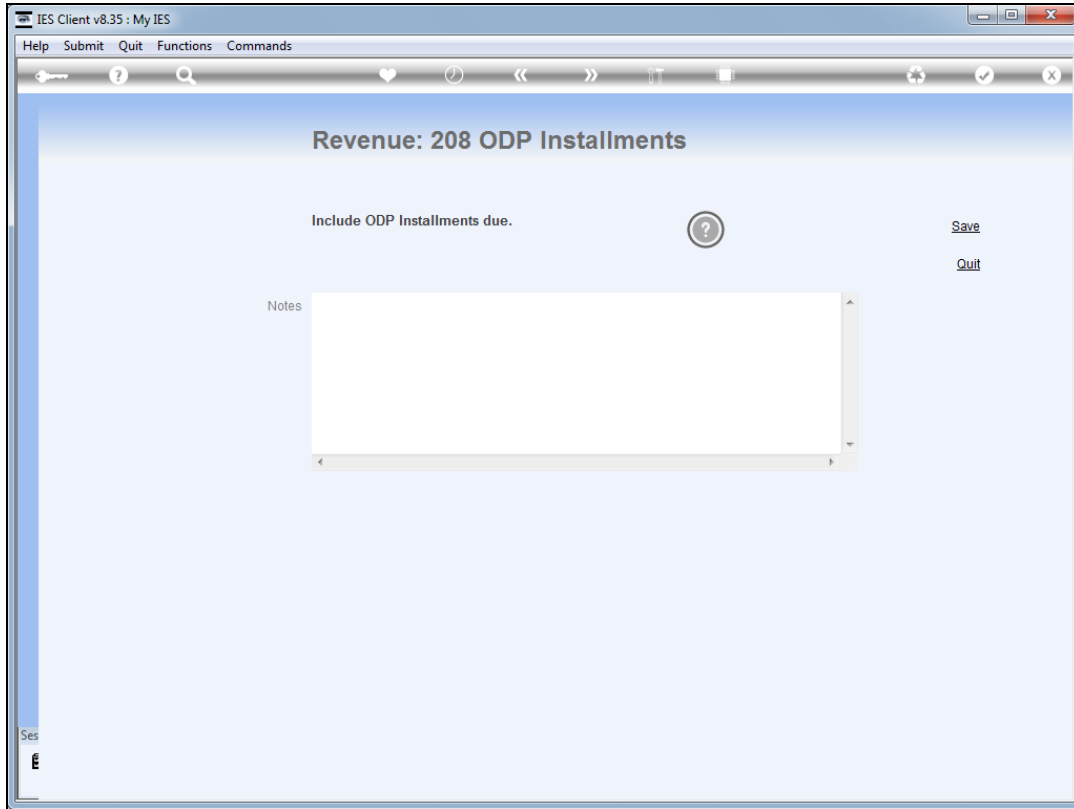
Slide 2

Slide notes: Each of these ODP elements can be added as a Revenue stream. For Installments due, we use option 208.

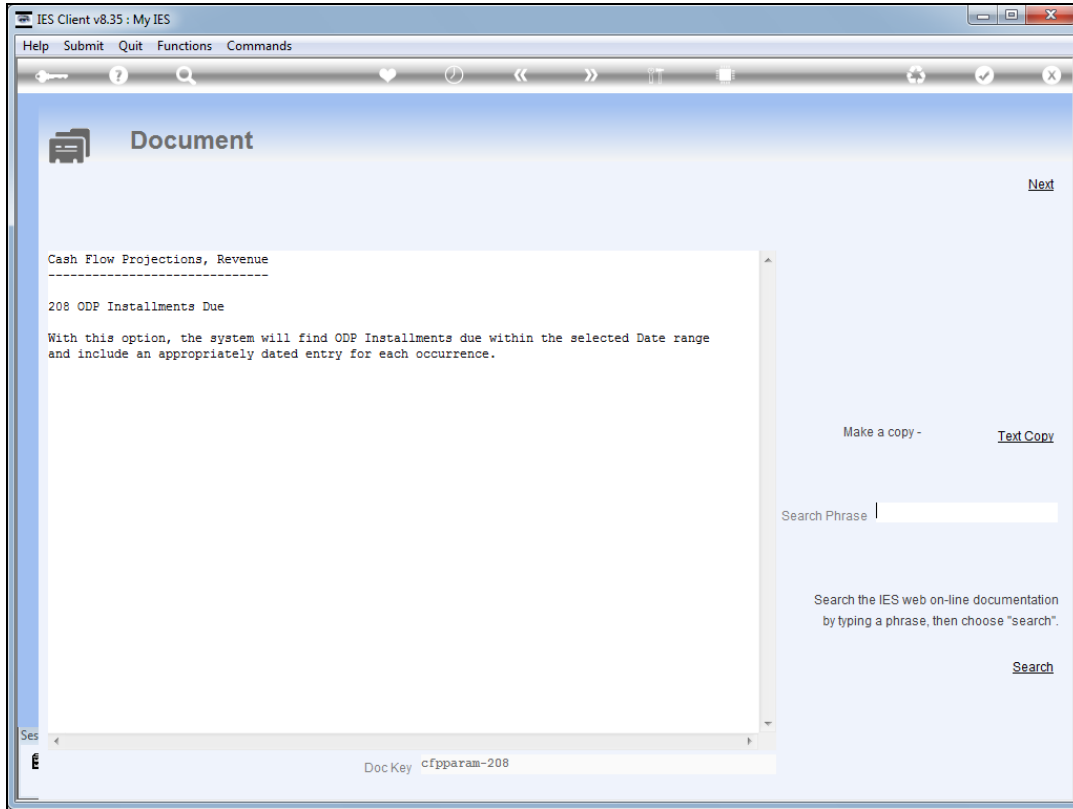


Slide 3

Slide notes: There is nothing else to do; we can just save the element.

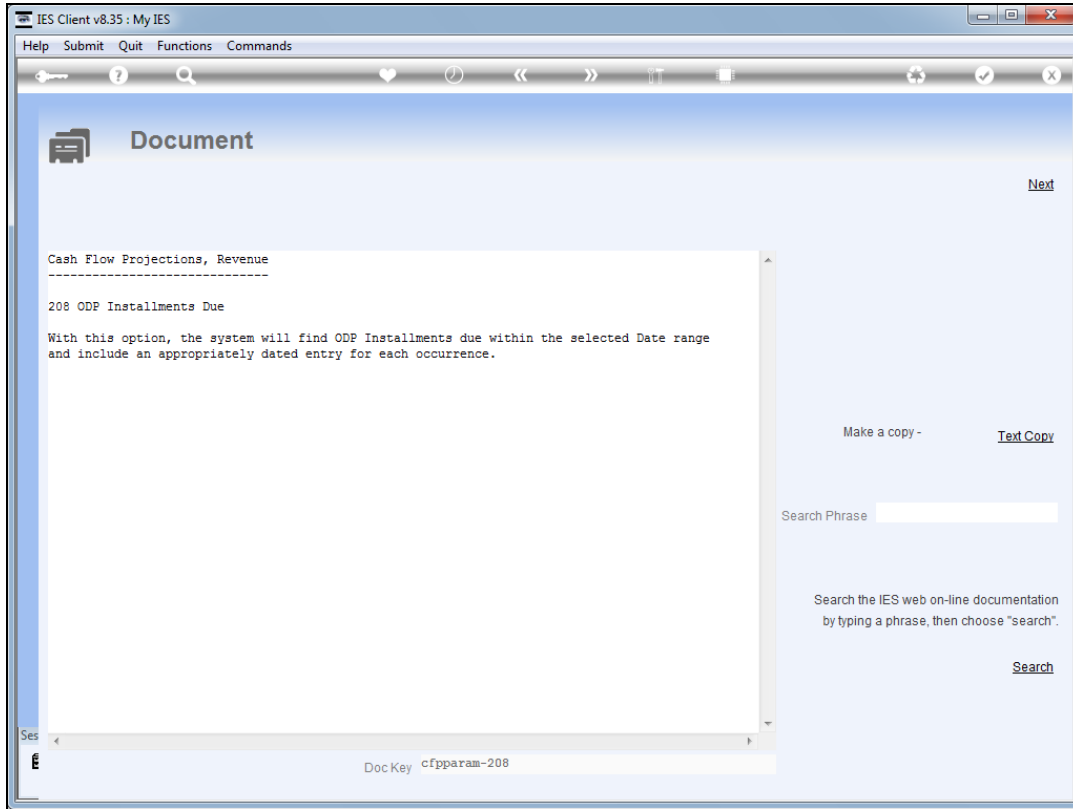


Slide 4
Slide notes:

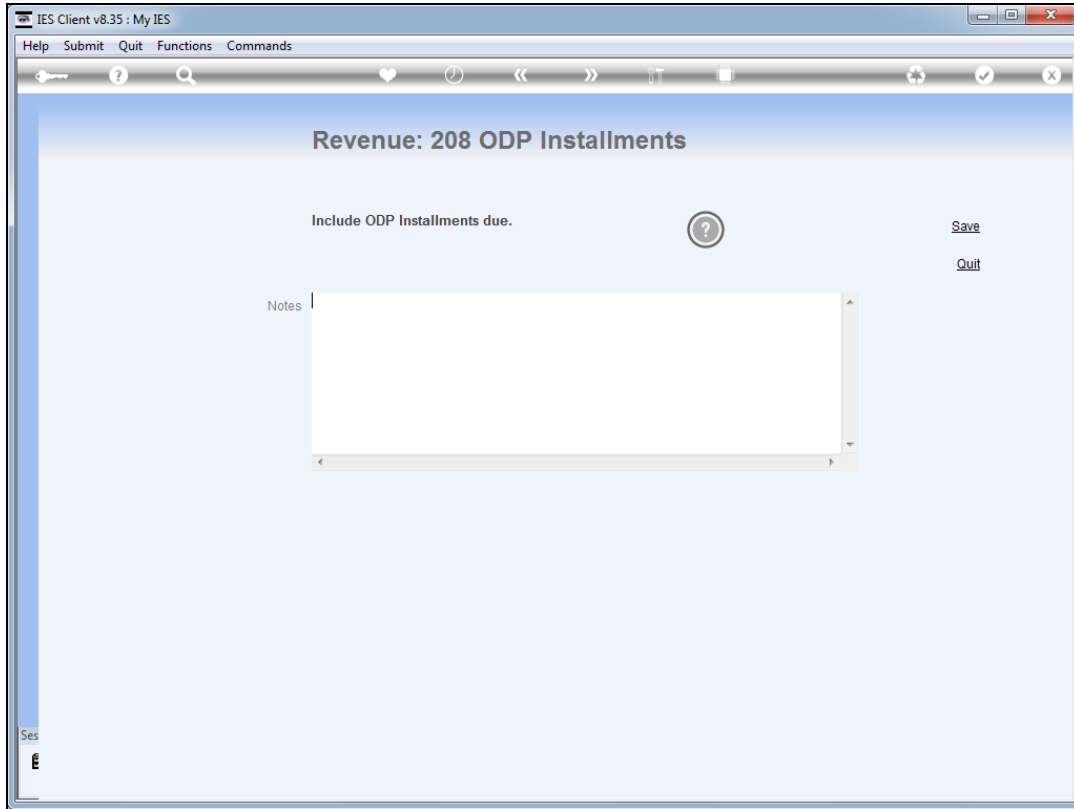


Slide 5

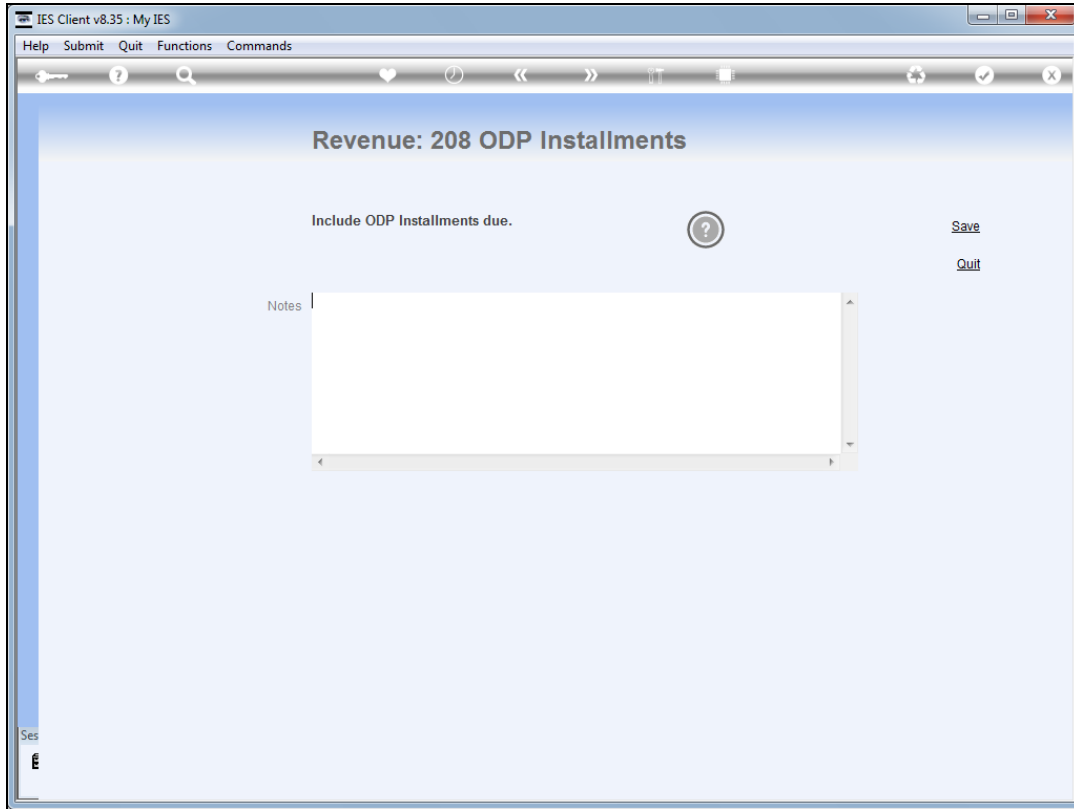
Slide notes: The Help explains how Installments due within the selected date range for the forecast, will be included.



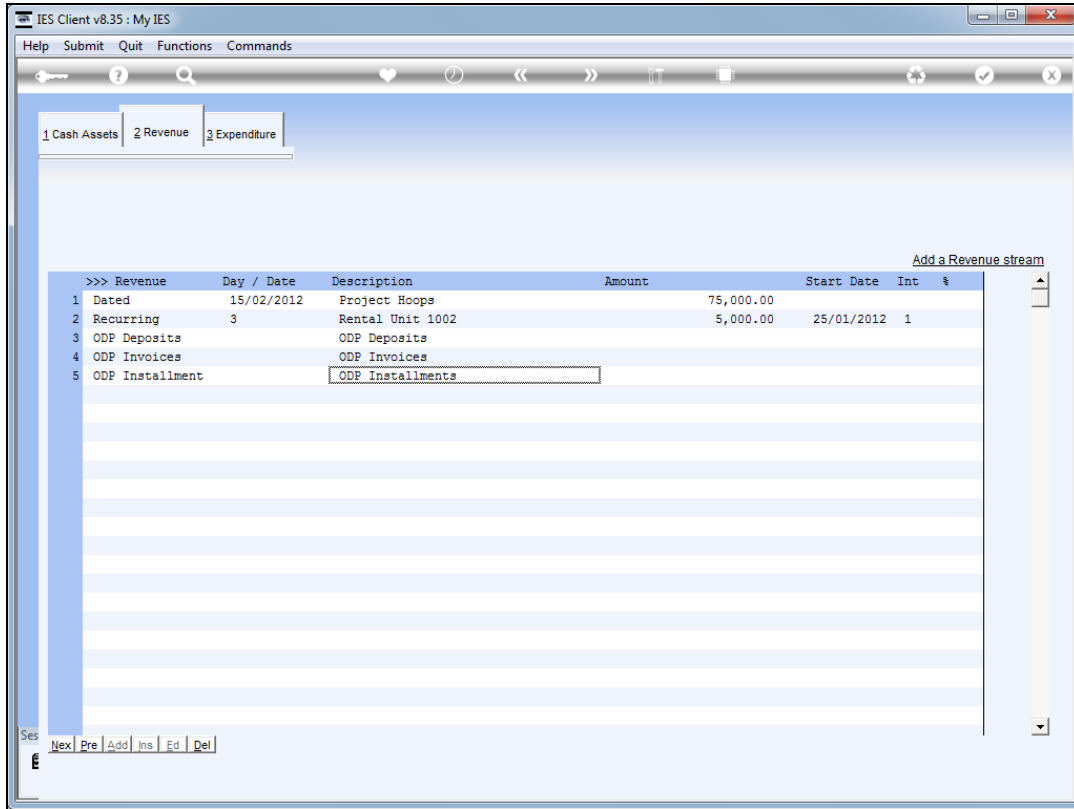
Slide 6
Slide notes:



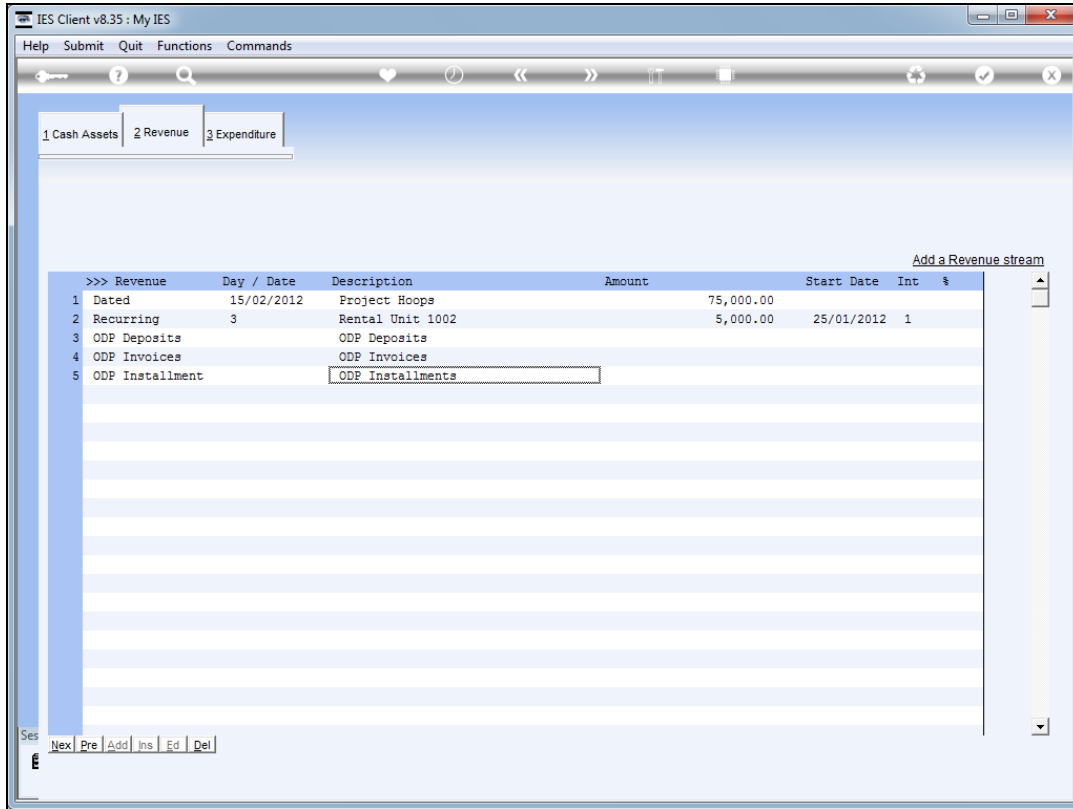
Slide 7
Slide notes:



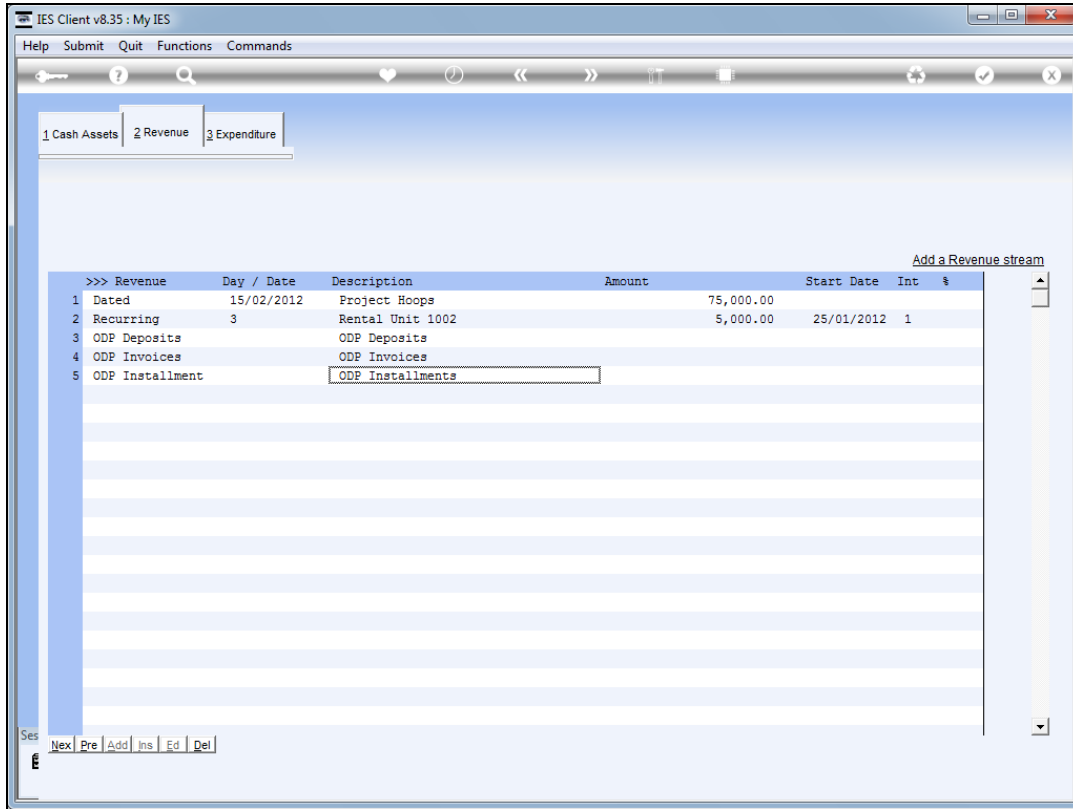
Slide 8
Slide notes:



Slide 9
Slide notes:



Slide 10
Slide notes:



Slide 11
Slide notes: