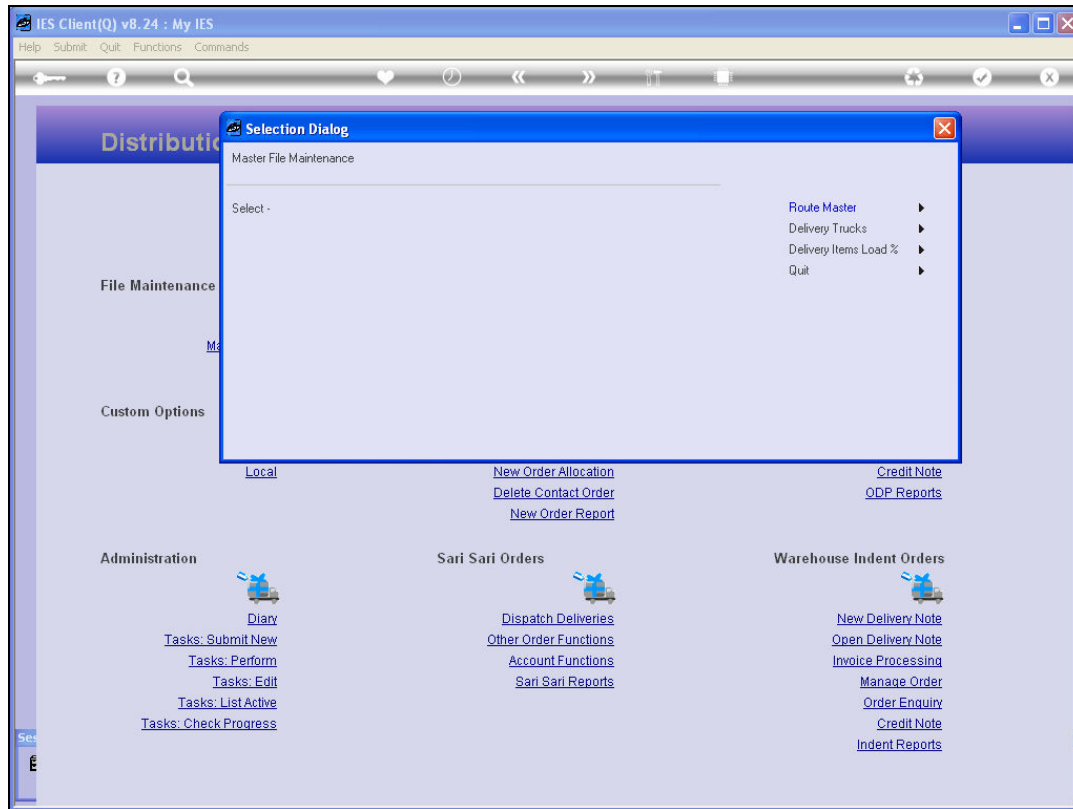


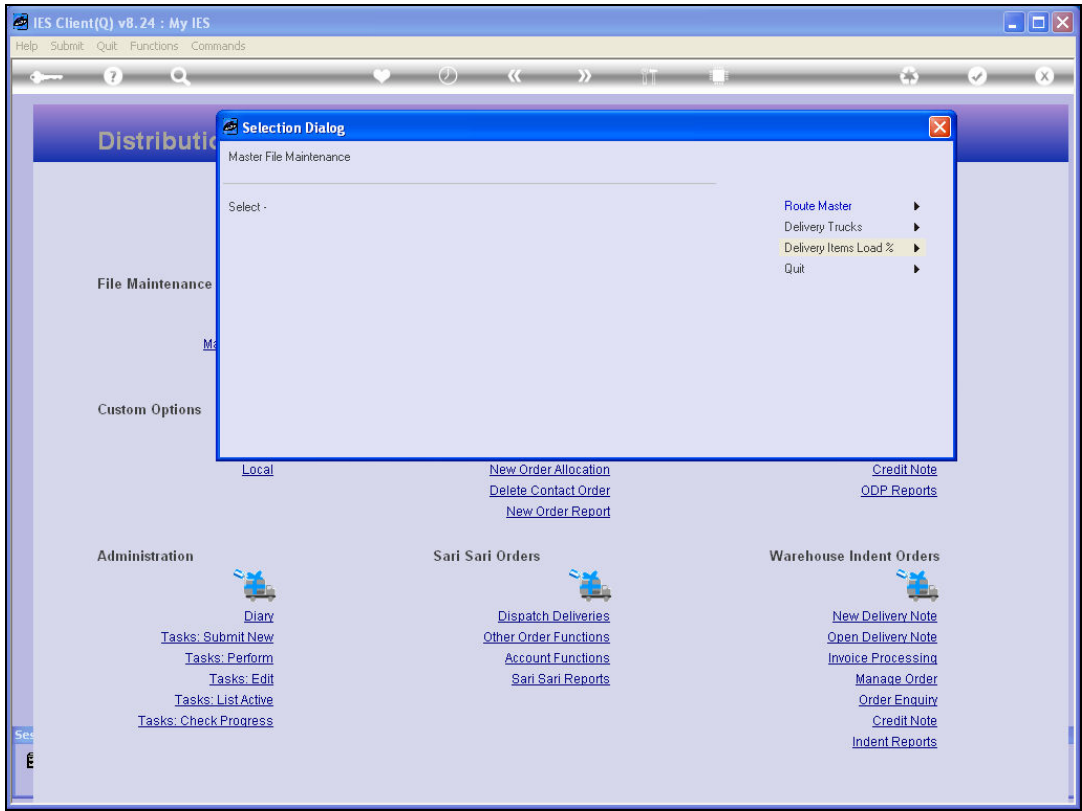
Slide 1

Slide notes: The Master Listings option at Distribution reveal a number of Report Options on Master Files used generally in Distribution Management.



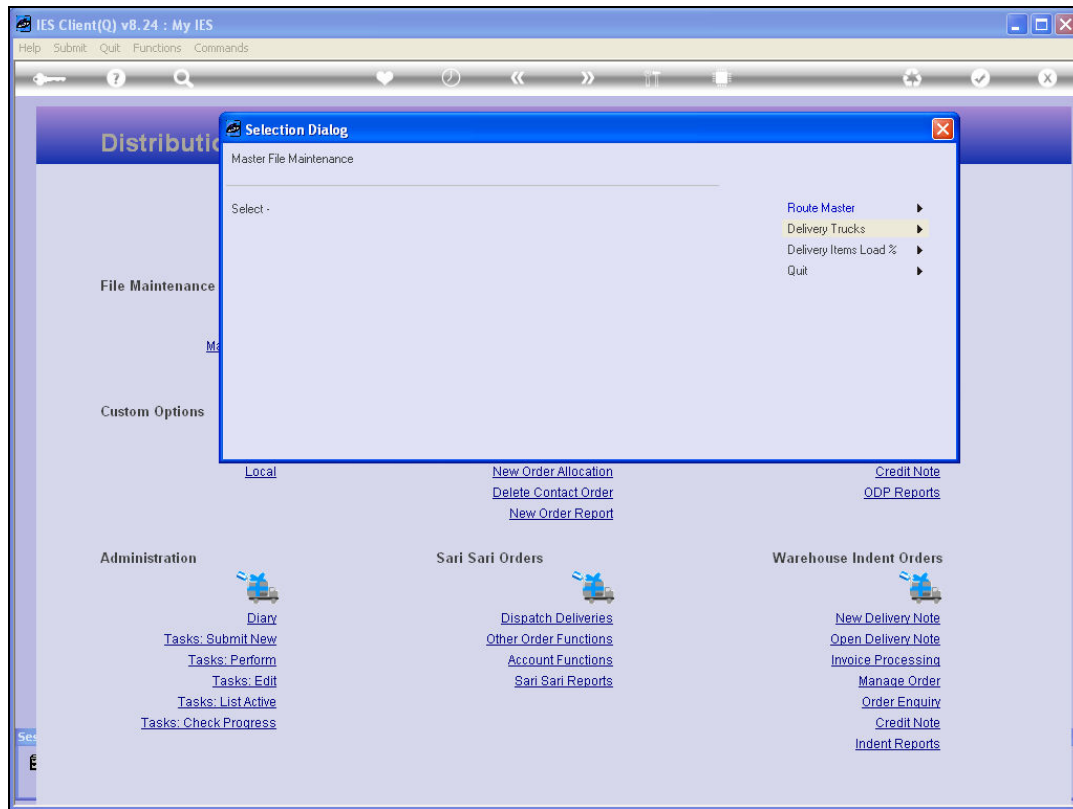
Slide 2

Slide notes: For example, we can list the Stock Item Load Factors, The Delivery Trucks, and the Route Master.



Slide 3

Slide notes:



Slide 4

Slide notes: We will do an example of a Route Listing.

IES Client(Q) v8.24 : My IES

Help Submit Quit Functions Commands

IES REPORTS AND QUERIES: - User Instructions

NAME: DISTRIBUTION ROUTES

1: - CHOOSE VERSION [Versions](#)

Report Version: system version: Distribution Routes

2: - CHOOSE SETTINGS

Format: report
OutPut: FILE
File Type: htm html file
Template: 04: Infolab
Report Header: Distribution Routes

3: - CHOOSE DATA SELECTOR [Change Selector](#)

Data Selector: fixed choice
distroutes DISTRIBUTION ROUTES

4: - TO e-MAIL THE RESULTS Priority: normal

☐ Despatch By E-Mail Mail Drive *

Mail To: Distribution Routes
Mail Title: report by mail
Message Body: report by mail

5: - ADAPT DATA SELECTION (if prompts are present)
How to define MY CHOICE

Selection Tip	My Choice
1 Key or Number From	0
2 Key or Number To	ZZZZZZZZZZZZZZZZ

Nex | Pre | Add | Ins | Ed | Del

6: - Record Select:

☐ OPEN Records only
☐ CLOSED Records Only
☒ EITHER

7: - CHOOSE NEXT [Next](#)

Slide 5

Slide notes:

IES Client(Q) v8.24 : My IES

Help Submit Quit Functions Commands

IES REPORTS AND QUERIES: - User Instructions

NAME: DISTRIBUTION ROUTES

1: - CHOOSE VERSION [Versions](#)

Report Version: system version: Distribution Routes

2: - CHOOSE SETTINGS

Format: report
OutPut: FILE
File Type: htm html file
Template: 04: Infolab
Report Header: Distribution Routes

3: - CHOOSE DATA SELECTOR [Change Selector](#)

Data Selector: fixed choice
distroutes DISTRIBUTION ROUTES

4: - TO e-MAIL THE RESULTS Priority: normal

☐ Despatch By E-Mail Mail Drive *

Mail To: Distribution Routes
Mail Title: report by mail
Message Body: report by mail

5: - ADAPT DATA SELECTION (if prompts are present)
How to define MY CHOICE

Selection Tip	My Choice
1 Key or Number From	0
2 Key or Number To	ZZZZZZZZZZZZZZZZ

Nex | Pre | Add | Ins | Ed | Del

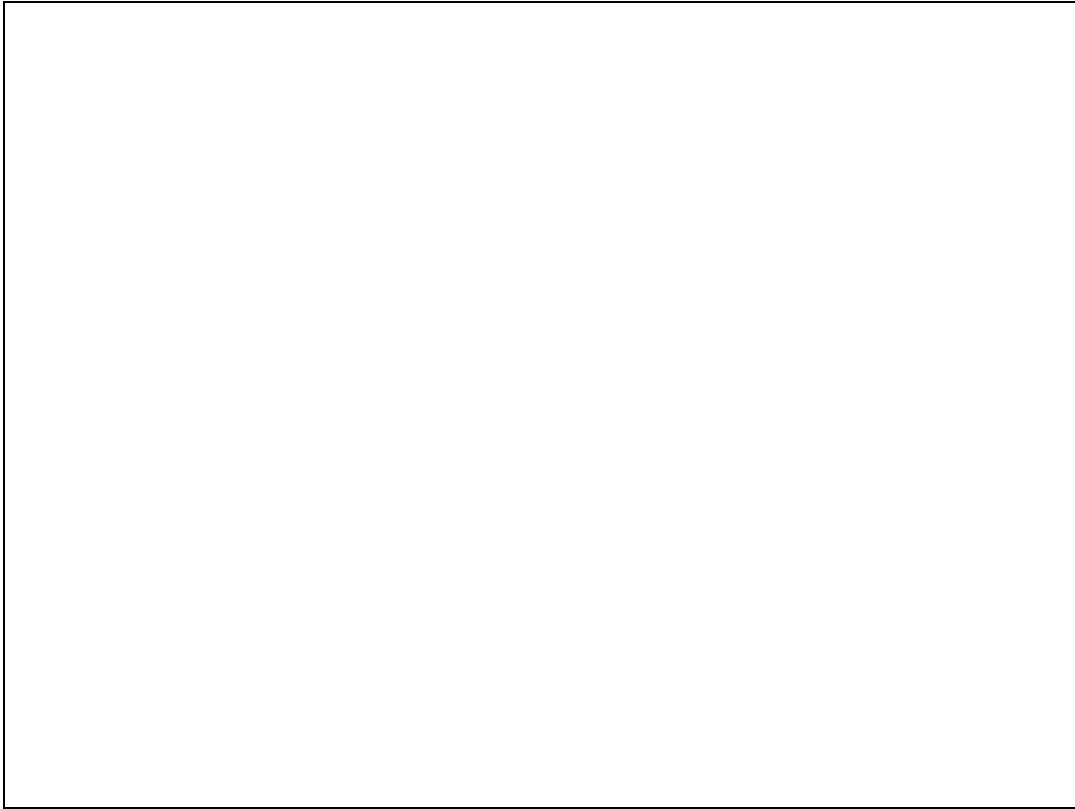
6: - Record Select:

☐ OPEN Records only
☐ CLOSED Records Only
☒ EITHER

7: - CHOOSE NEXT [Next](#)

Slide 6

Slide notes:



Slide 7

Slide notes: The Route Master listing will include the current Stops as indicated for each Route.

SearchFavoritesGoLinks

Infolab (Pty) Ltd

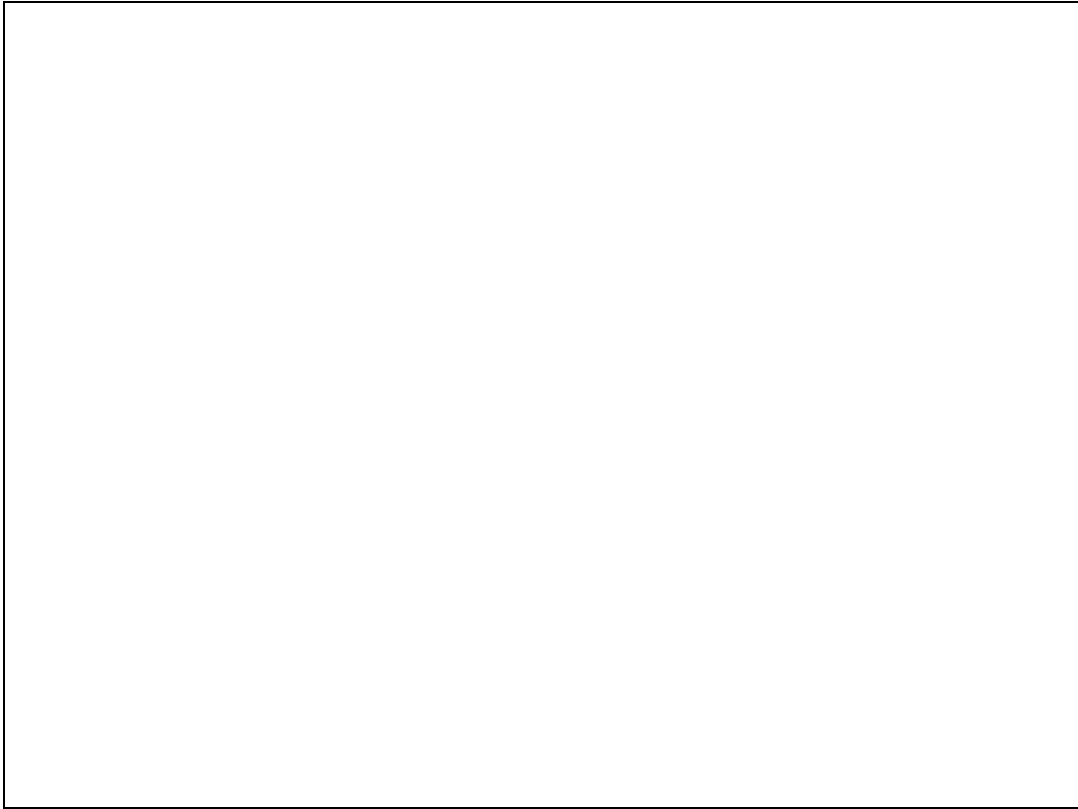
www.infolab.cc

1

	Customer.....	Location.....	.Stop #
Downtown	[1496661514H] Pie Stop 23 (Montana)	@ The Mall	1
	[1496661514E] Pie Stop 23 (Arcadia)	@ The Mall	2
	[1496661514D] Pie Stop 23 (Sunnyside)		3
	[1496661514G] Pie Stop 23 (Wonderboom)		4
	[1496661514] Pie Stop 23 (Down Town)		5
	[1492848662] Pie Stop 23 (Centurion Lake		6
	[1496661514F] Pie Stop 23 (Brooklyn)		7
	[1496661514C] Pie Stop 23 (Hennops)		8
	[1496661514K] Pie Stop 23 (Riverside)		9
	[1496661514J] Pie Stop 23 (South Lake)		10
	[1496661514A] Pie Stop 23 (Doornkloof)		11
	[1496661514I] Pie Stop 23 (Kloof)		12
	[1532629067] Grabowski, Theresa	Upper Bonanza, # 45	12
	[1496661514B] Pie Stop 23 (Hillside)		14
entral	[]		0
West	[]		0
East	[]		0

Slide 8

Slide notes:



Slide 9

Slide notes:

SearchFavoritesGoLinks

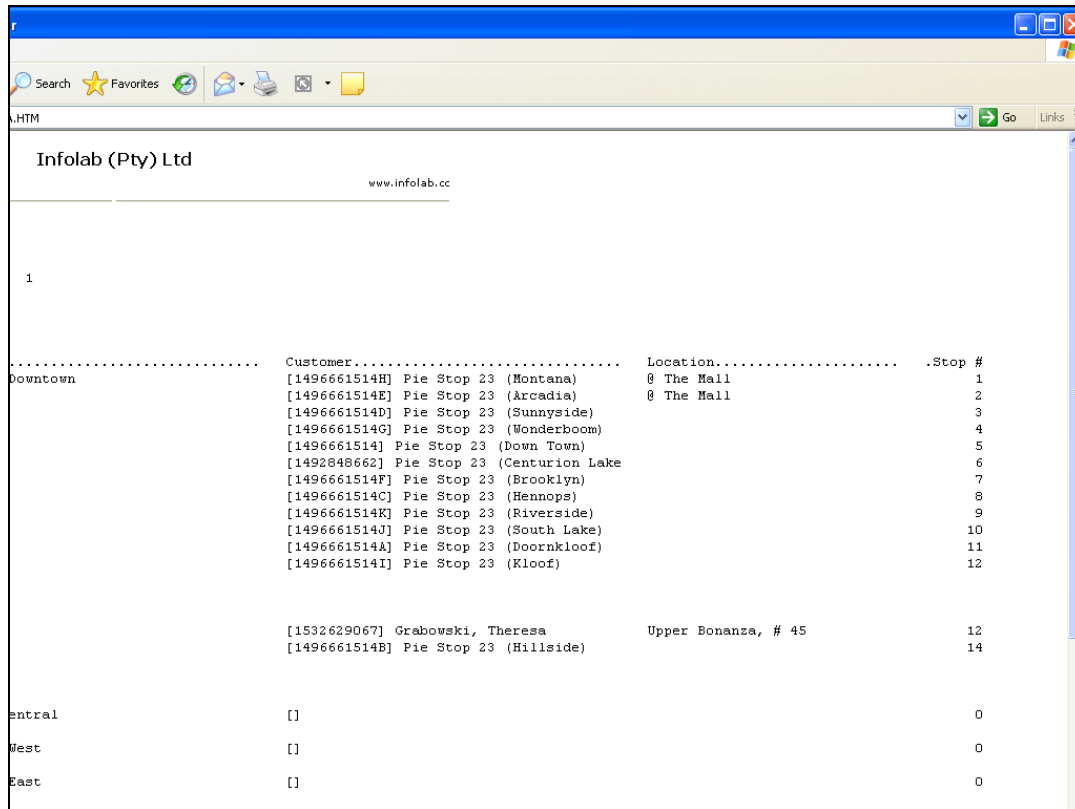
Infolab (Pty) Ltd

www.infolab.cc

1

	Customer.....	Location.....	.Stop #
Downtown	[1496661514H] Pie Stop 23 (Montana)	@ The Mall	1
	[1496661514E] Pie Stop 23 (Arcadia)	@ The Mall	2
	[1496661514D] Pie Stop 23 (Sunnyside)		3
	[1496661514G] Pie Stop 23 (Wonderboom)		4
	[1496661514] Pie Stop 23 (Down Town)		5
	[1492848662] Pie Stop 23 (Centurion Lake		6
	[1496661514F] Pie Stop 23 (Brooklyn)		7
	[1496661514C] Pie Stop 23 (Hennops)		8
	[1496661514K] Pie Stop 23 (Riverside)		9
	[1496661514J] Pie Stop 23 (South Lake)		10
	[1496661514A] Pie Stop 23 (Doornkloof)		11
	[1496661514I] Pie Stop 23 (Kloof)		12
	[1532629067] Grabowski, Theresa	Upper Bonanza, # 45	12
	[1496661514B] Pie Stop 23 (Hillside)		14
entral	[]		0
West	[]		0
East	[]		0

Slide 10
Slide notes:



Infolab (Pty) Ltd

www.infolab.cc

1

	Customer.....	Location.....	Stop #
Downtown	[1496661514H] Pie Stop 23 (Montana)	@ The Mall	1
	[1496661514E] Pie Stop 23 (Arcadia)	@ The Mall	2
	[1496661514D] Pie Stop 23 (Sunnyside)		3
	[1496661514G] Pie Stop 23 (Wonderboom)		4
	[1496661514] Pie Stop 23 (Down Town)		5
	[1492848662] Pie Stop 23 (Centurion Lake)		6
	[1496661514F] Pie Stop 23 (Brooklyn)		7
	[1496661514C] Pie Stop 23 (Hennops)		8
	[1496661514K] Pie Stop 23 (Riverside)		9
	[1496661514J] Pie Stop 23 (South Lake)		10
	[1496661514A] Pie Stop 23 (Doornkloof)		11
	[1496661514I] Pie Stop 23 (Kloof)		12
	[1532629067] Grabowski, Theresa	Upper Bonanza, # 45	12
	[1496661514B] Pie Stop 23 (Hillside)		14
entral	[]		0
West	[]		0
East	[]		0

Slide 11

Slide notes: