

IES Client(Q) v8.24 : My IES

Help Submit Quit Functions Commands

1 Order 2 Comment

Assign new Contact Order

[Save](#)

Find Order: Name: GRABOWSKI, THERESA CRM: 00492

Sales Code: Account: 07306 Club:

Cust Order #: 0000218 Account Bal: 4,686.45 Expiry:

Origination: contact Credit Limit: 1,000,000.00 Directive:

Deposit Amt: 0.00 Avail Credit: 995,313.55

Assign To: - [Sari Sari](#)
[Warehouse Indent](#)
[Warehouse ODP](#)

Deal Functions: [Functions](#)
[Duplicate the Order](#)

Stock Code	Store	Description	Cust Price	Qty	Tax	Incl Value
1 3007058	01	NIKON COOLPIX 4100	363.00	1.00	50.82	413.82

Direct (non Catalog) [Add Direct Item](#)

>>> Status	Description
1	

Deal Status: NEW
Tax Status: may include taxable a
Operator: Terry
Sys Ref #: 1536739706
Currency: LOCAL R
Rate Book: none

	50.82	413.82
Catalog	50.82	413.82
Direct	0.00	0.00
Returns	0.00	0.00
Specials	0.00	0.00
Nett	50.82	413.82

Slide 1

Slide notes: When assigning Contact Orders to a Distribution queue, the ODP queue is an option. ODP Orders are Credit Orders, which may or may not require a Deposit.

IES Client(Q) v8.24 : My IES

Help Submit Quit Functions Commands

1 Order 2 Comment

Assign new Contact Order

[Save](#)

Find Order: Name: GRABOWSKI, THERESA CRM: 00492

Sales Code: tt Account: 07306 Club:

Cust Order #: 0000218 Account Bal: 4,686.45 Expiry:

Origination: contact Credit Limit: 1,000,000.00 Directive:

Deposit Amt: 0.00 Avail Credit: 995,313.55

Assign To: - [Sari Sari](#)
[Warehouse Indent](#)
[Warehouse ODP](#)

Deal Functions: - [Functions](#)
[Duplicate the Order](#)

Stock Code	Store	Description	Cust Price	Qty	Tax	Incl Value
1 3007058	01	NIKON COOLPIX 4100	363.00	1.00	50.82	413.82

Direct (non Catalog) [Add Direct Item](#)

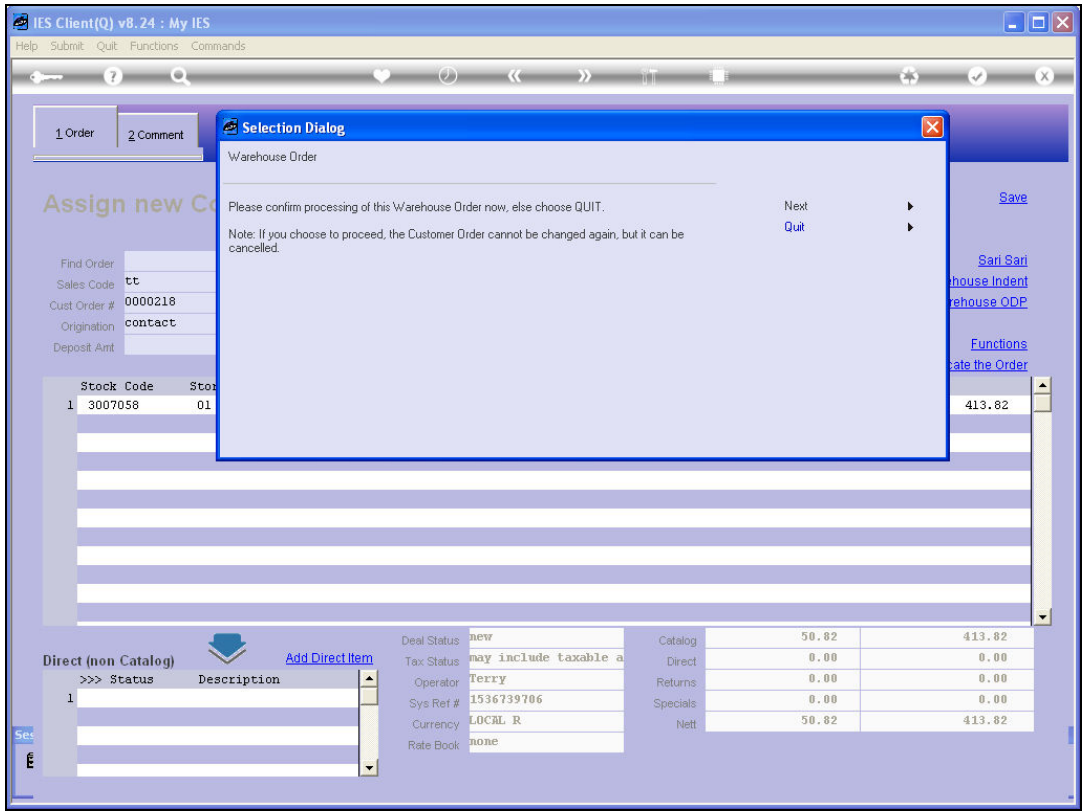
>>> Status	Description
1	

Deal Status: new
Tax Status: may include taxable a
Operator: Terry
Sys Ref #: 1536739706
Currency: LOCAL R
Rate Book: none

Catalog	Direct	Returns	Specials	Nett
50.82	0.00	0.00	0.00	50.82
413.82	0.00	0.00	0.00	413.82

Slide 2

Slide notes: When we wish to assign a new Order to the ODP queue, we choose "Warehouse ODP".



Slide 3

Slide notes: From here, the steps will be the same as with all new ODP Orders. There may be a Deposit Transaction and / or Invoice, or if not, we can just choose NEXT for queue assignment. Please see the ODP Business Process tutorials for more detail on each possible step that may be dealt with for ODP Orders.