

IES Client(Q) v8.24 : My IES

Help Submit Quit Functions Commands

1 Order 2 Comment

Assign new Contact Order

[Save](#)

Find Order: Name: GRABOWSKI, THERESA CRM: 00492

Sales Code: Account: 07306 Club:

Cust Order #: 0000218 Account Bal: 4,686.45 Expiry:

Origination: contact Credit Limit: 1,000,000.00 Directive:

Deposit Amt: 0.00 Avail Credit: 995,313.55

Assign To: - [Sari Sari](#)

[Warehouse Indent](#)

[Warehouse ODP](#)

Deal Functions: [Functions](#)

[Duplicate the Order](#)

Stock Code	Store	Description	Cust Price	Qty	Tax	Incl Value
1 3007058	01	NIKON COOLPIX 4100	363.00	1.00	50.82	413.82

Direct (non Catalog) [Add Direct Item](#)

>>> Status	Description
1	

Deal Status: NEW

Tax Status: may include taxable a

Operator: Terry

Sys Ref #: 1536739706

Currency: LOCAL R

Rate Book: none

Catalog	Direct	Returns	Specials	Nett
50.82	0.00	0.00	0.00	50.82
413.82	0.00	0.00	0.00	413.82

Slide 1

Slide notes: When we assign a new Contact Order to the Indent queue, it does not matter whether a Deposit is already specified or not, because the nature of an Indent Order is that it must be pre-paid. As such, the system will request processing of the full Amount as Deposit, and the linking of this proof of payment transaction to the Order.

IES Client(Q) v8.24 : My IES

Help Submit Quit Functions Commands

1 Order

2 Comment

Assign new Contact Order

Find Order

Sales Code

Cust Order #

Origination

Deposit Amt

cc

0000218

contact

0.00

Name

Account

Account Bal

Credit Limit

Avail Credit

GRABOWSKI, THERESA

07306

4,686.45

1,000,000.00

995,313.55

CRM

Club

Expiry

Directive

00492

Assign To: -

Sari Sari

Warehouse Indent

Warehouse ODP

Deal Functions: -

Functions

Duplicate the Order

Save

Direct (non Catalog)

Add Direct Item

Deal Status

Tax Status

Operator

Sys Ref #

Currency

Rate Book

new

may include taxable a

Terry

1536739706

LOCAL R

none

Catalog

Direct

Returns

Specials

Nett

50.82

0.00

0.00

0.00

50.82

413.82

0.00

0.00

0.00

413.82

Slide 2

Slide notes:

IES Client(Q) v8.24 : My IES

Help Submit Quit Functions Commands

1 Order

2 Comment

Assign new Contact Order

Find Order

Sales Code

Cust Order #

Origination

Deposit Amt

tt

0000218

contact

0.00

Name

Account

Account Bal

Credit Limit

Avail Credit

GRABOWSKI, THERESA

07306

4,686.45

1,000,000.00

995,313.55

CRM

Club

Expiry

Directive

00492

Assign To: -

Sari Sari

Warehouse Indent

Warehouse ODP

Deal Functions: -

Functions

Duplicate the Order

	Stock Code	Store	Description	Cust Price	Qty	Tax	Incl Value
1	3007058	01	NIKON COOLPIX 4100	363.00		1.00	50.82
							413.82

Direct (non Catalog)

Add Direct Item

>>> Status

Description

1

Deal Status

Tax Status

Operator

Sys Ref #

Currency

Rate Book

new

may include taxable a

Terry

1536739706

LOCAL R

none

Catalog

Direct

Returns

Specials

Nett

50.82

0.00

0.00

0.00

50.82

413.82

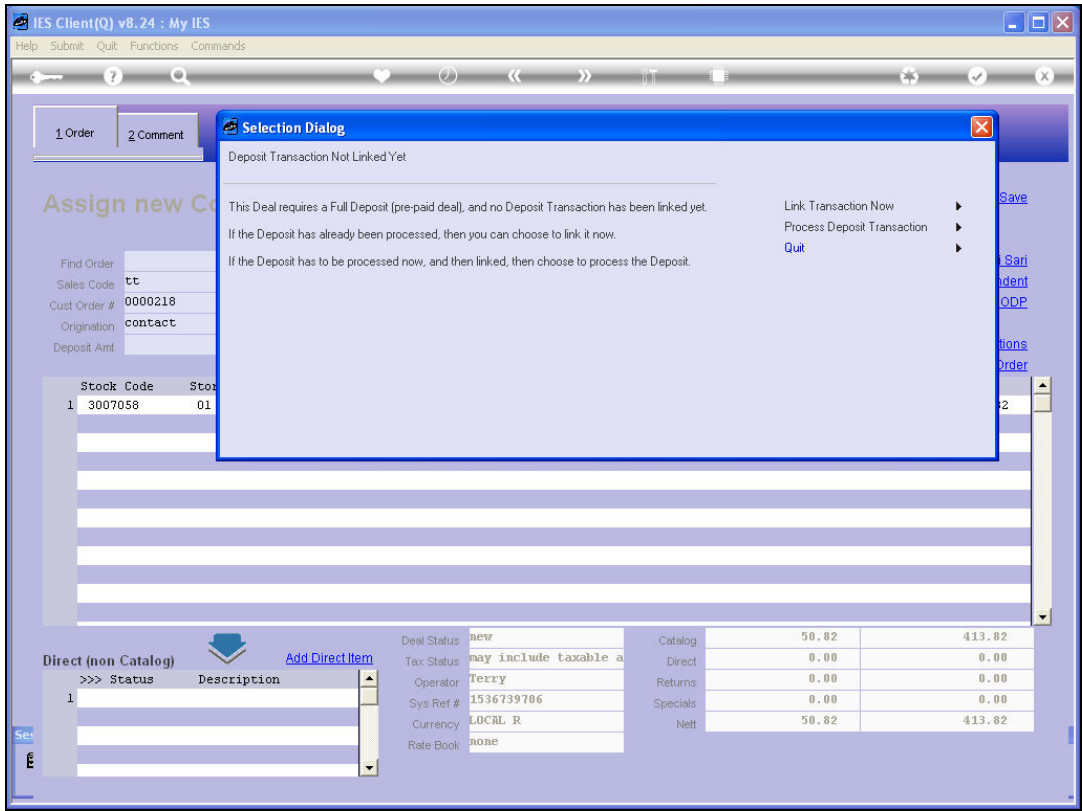
0.00

0.00

0.00

413.82

Slide 3
Slide notes:



Slide 4

Slide notes: From here, all steps are the same as with Indent Orders. The tutorials for the Indent Order Business Process may be consulted for more detail on each step encountered with Indent Orders.

IES Client(Q) v8.24 : My IES

Help Submit Quit Functions Commands

1 Order

2 Comment

Assign new Contact Order

Find Order

Sales Code

Cust Order #

Origination

Deposit Amt

cc

0000218

contact

413.82

Name

Account

Account Bal

Credit Limit

Avail Credit

GRABOWSKI, THERESA

07306

4,686.45

1,000,000.00

995,313.55

CRM

Club

Expiry

Directive

00492

Assign To: -

[Sari Sari](#)

[Warehouse Indent](#)

[Warehouse ODP](#)

Deal Functions: -

[Functions](#)

[Duplicate the Order](#)

	Stock Code	Store	Description	Cust Price	Qty	Tax	Incl Value
1	3007058	01	NIKON COOLPIX 4100	363.00		1.00	50.82
							413.82

Direct (non Catalog)

>>> Status

Description

1

Deal Status

Tax Status

Operator

Sys Ref #

Currency

Rate Book

new

may include taxable a

Terry

1536739706

LOCAL R

none

Catalog

Direct

Returns

Specials

Nett

50.82

0.00

0.00

0.00

50.82

413.82

0.00

0.00

0.00

413.82

Slide 5
Slide notes: