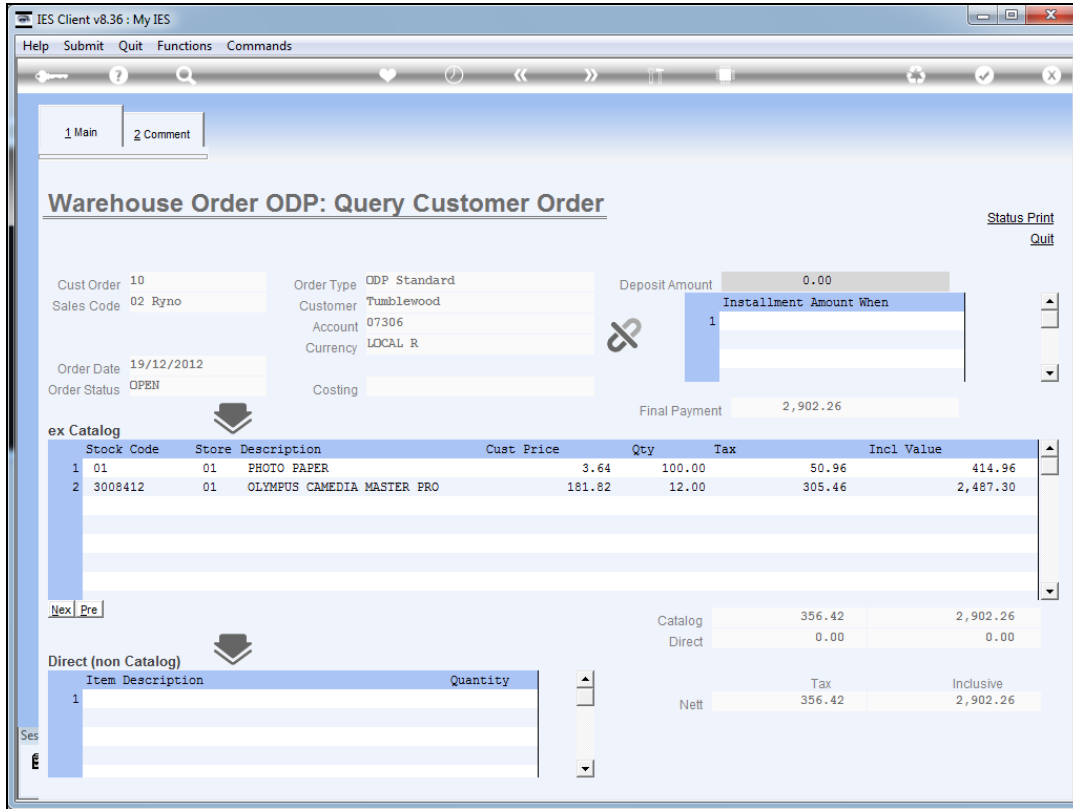


Slide 1

Slide notes: We can drill into the state of an Order in progress.



Slide 2

Slide notes: Here we find a status print that will reveal what has been delivered and what remains outstanding. For other actions, we need to use the menu options on Purchase Orders, Deliveries, Invoicing, etc.

IES Client v8.36 : My IES

Help Submit Quit Functions Commands

1 Main 2 Comment

Warehouse Order ODP: Query Customer Order

[Status Print](#)
[Quit](#)

Cust Order 10 Order Type ODP Standard Deposit Amount 0.00
Sales Code 02 Ryno Customer Tumblewood
Account 07306
Currency LOCAL R
Order Date 19/12/2012
Order Status OPEN Costing
Final Payment 2,902.26

Installation Amount When
1

ex Catalog

Stock Code	Store	Description	Cust Price	Qty	Tax	Incl Value
1 01	01	PHOTO PAPER	3.64	100.00	50.96	414.96
2 3008412	01	OLYMPUS CAMERA MASTER PRO	181.82	12.00	305.46	2,487.30

Next Pre

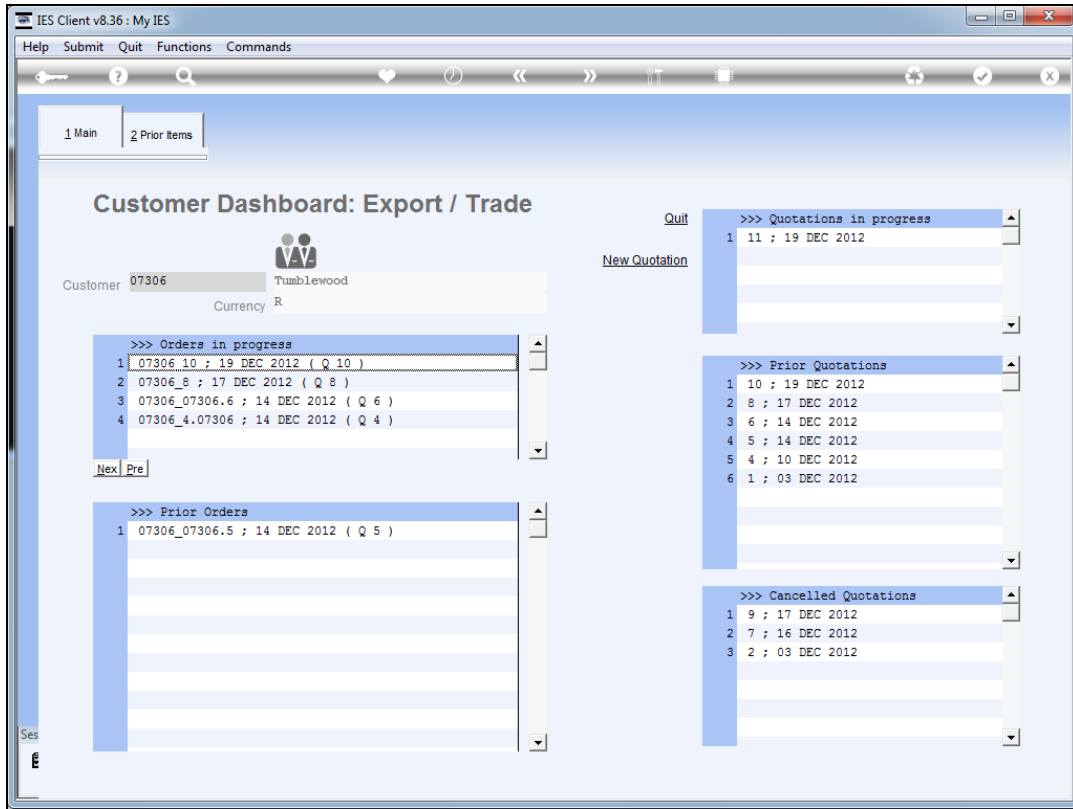
Direct (non Catalog)

Item	Description	Quantity
1		

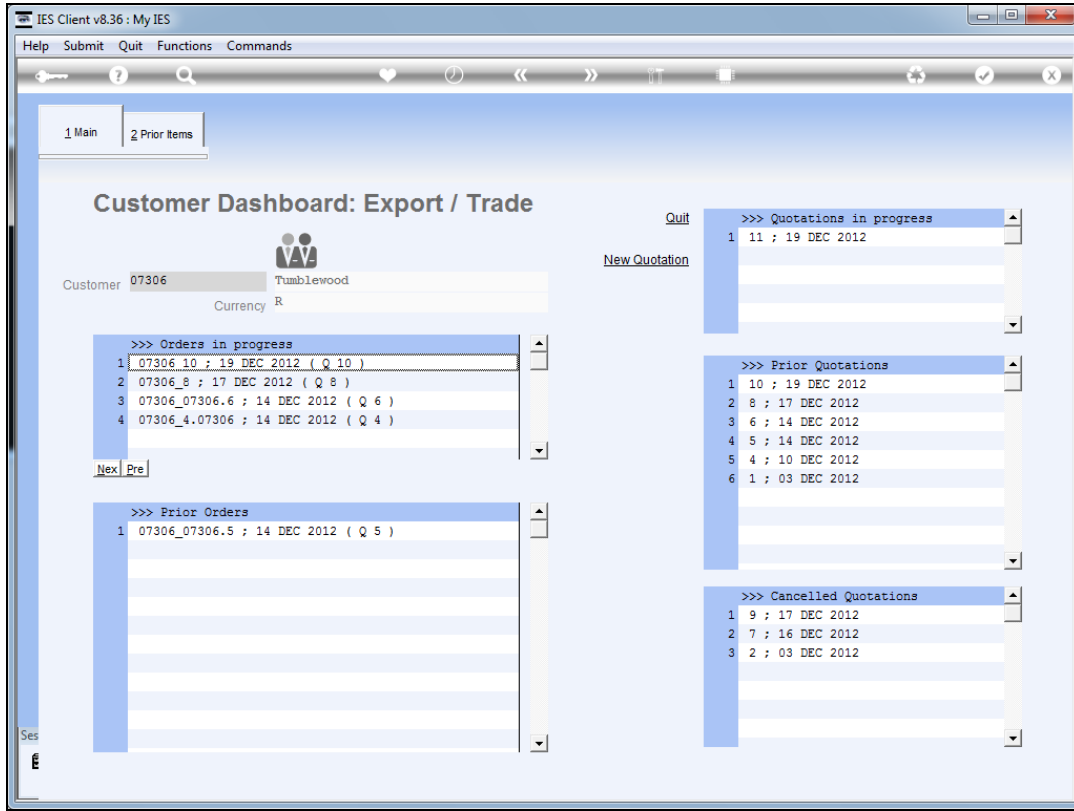
Ses

	Tax	Inclusive
Catalog	356.42	2,902.26
Direct	0.00	0.00
Nett	356.42	2,902.26

Slide 3
Slide notes:



Slide 4
Slide notes:



Slide 5

Slide notes: Prior Orders may also be drilled.

RETAIL INVOICE DRILL

Rate Book: NO Currency: LOCAL R
Transaction Period: 144: Nov 2012 Trans Date: 14/12/2012
Operator: Tim Tono Sys Ref#: 1642236962
Cash Account: 10000076 CASH RECEIPTS: LOCAL
Deal Status: Order # 0000370

ex Catalog Origination: 01 Main Store

Stock Code	Store	Description	Price	Cust Price	Qty	Serial/Batch	Total	Tax	Incl Value	
1 01	01	PHOTO PAPER	3.64	3.64	1.00			3.64	0.51	4.15

Other Items

>>> Status	Description	Catalog	Direct	Returns	Trade-Ins	Specials	Nett
1		3.64	0.00	0.00	0.00	0.00	3.64

Excl Total Tax Incl Total

Deal Views Transaction Drills Customer Records

CUSTOMER: Tumblewood
Account: 07306
CRM: 00492
Club:
Customer Order: 07306.5

Slide 6

Slide notes: In this case, we are presented with the Retail Invoice where we can get Deal Views, drill the Transactions or query the Customer records. For other information not available here, we can still drill the original quotation.

IES Client v8.36 : My IES

Help Submit Quit Functions Commands

RETAIL INVOICE DRILL

Rate Book NO Currency LOCAL R
Transaction Period 144: Nov 2012 Trans Date 14/12/2012
Operator Tim Tono Sys Ref# 1642236962
Cash Account 10000076 CASH RECEIPTS: LOCAL
Deal Status Order # 0000370

ex Catalog Origination 01

Stock Code	Store	Description	Price	Cust Price	Qty	Serial/Batch	Total	Tax	Incl Value	
1	01	01 PHOTO PAPER	3.64	3.64	1.00			3.64	0.51	4.15

Other Items

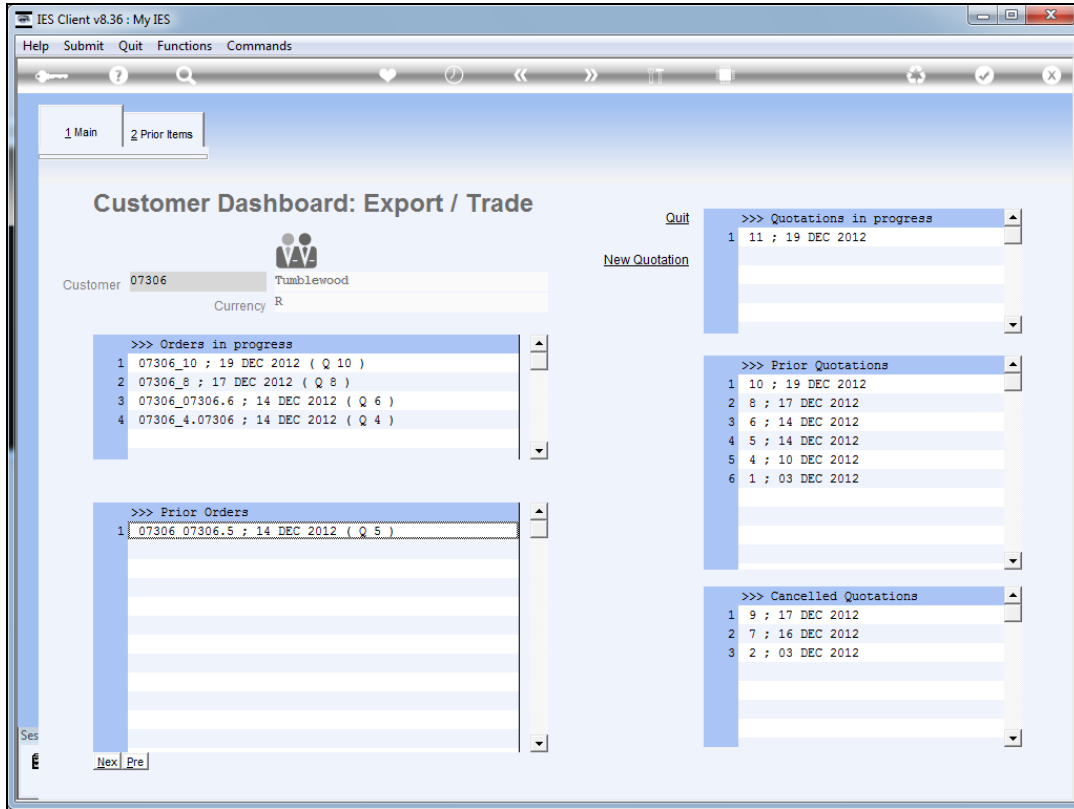
>>> Status	Description			
1				

	Excl Total	Tax	Incl Total
Catalog	3.64	0.51	4.15
Direct	0.00	0.00	0.00
Returns	0.00	0.00	0.00
Trade-Ins	0.00	0.00	0.00
Specials	0.00	0.00	0.00
Nett	3.64	0.51	4.15

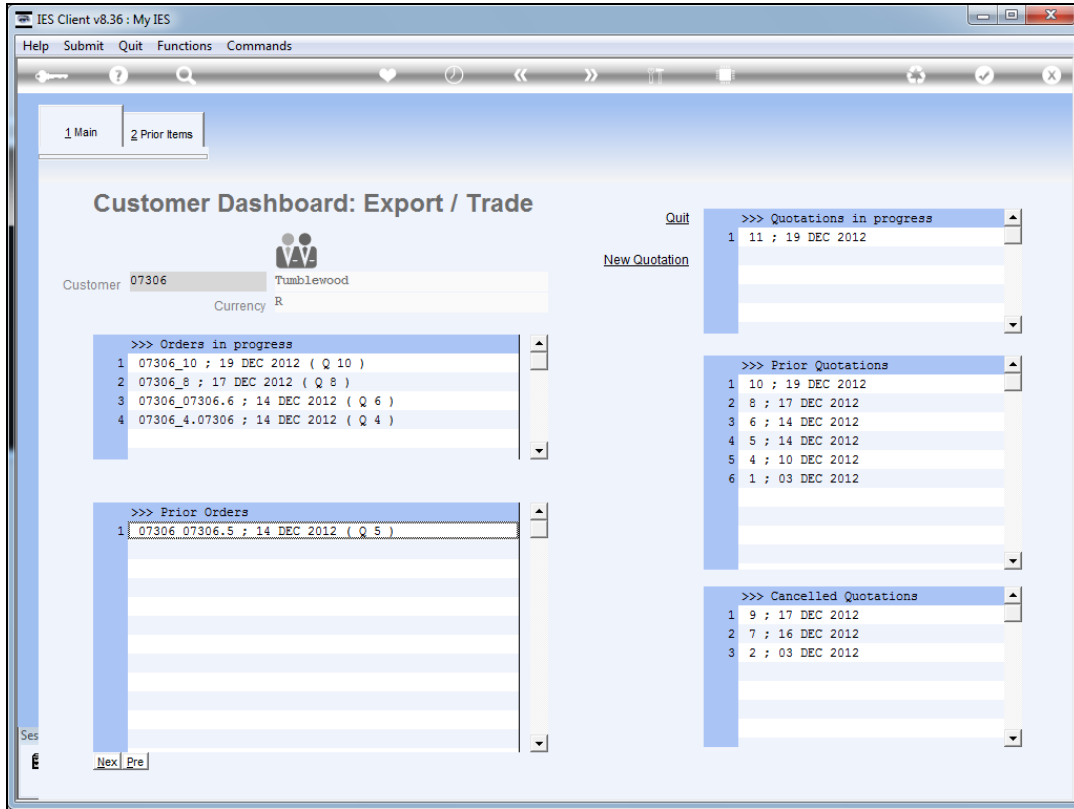
[Deal Views](#)
[Transaction Drills](#)
[Customer Records](#)

CUSTOMER: Tumblewood
Account 07306
CRM 00492
Club
Customer Order 07306.5

Slide 7
Slide notes:



Slide 8
Slide notes:



Slide 9
Slide notes: