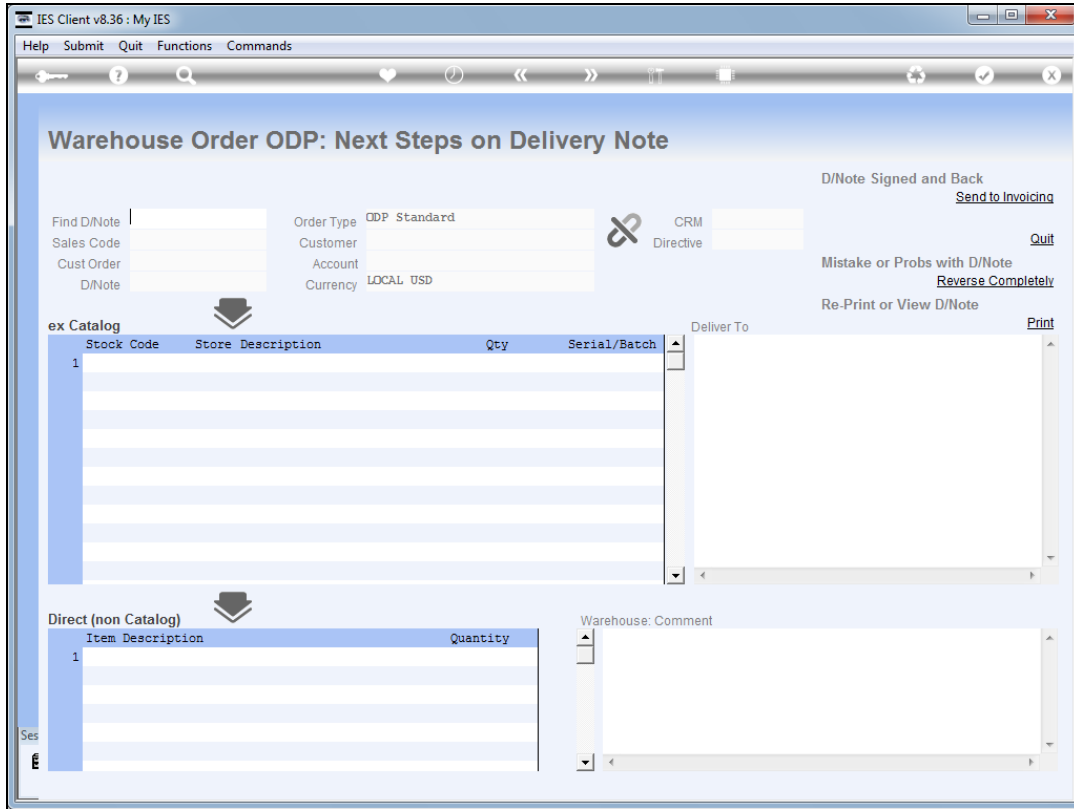


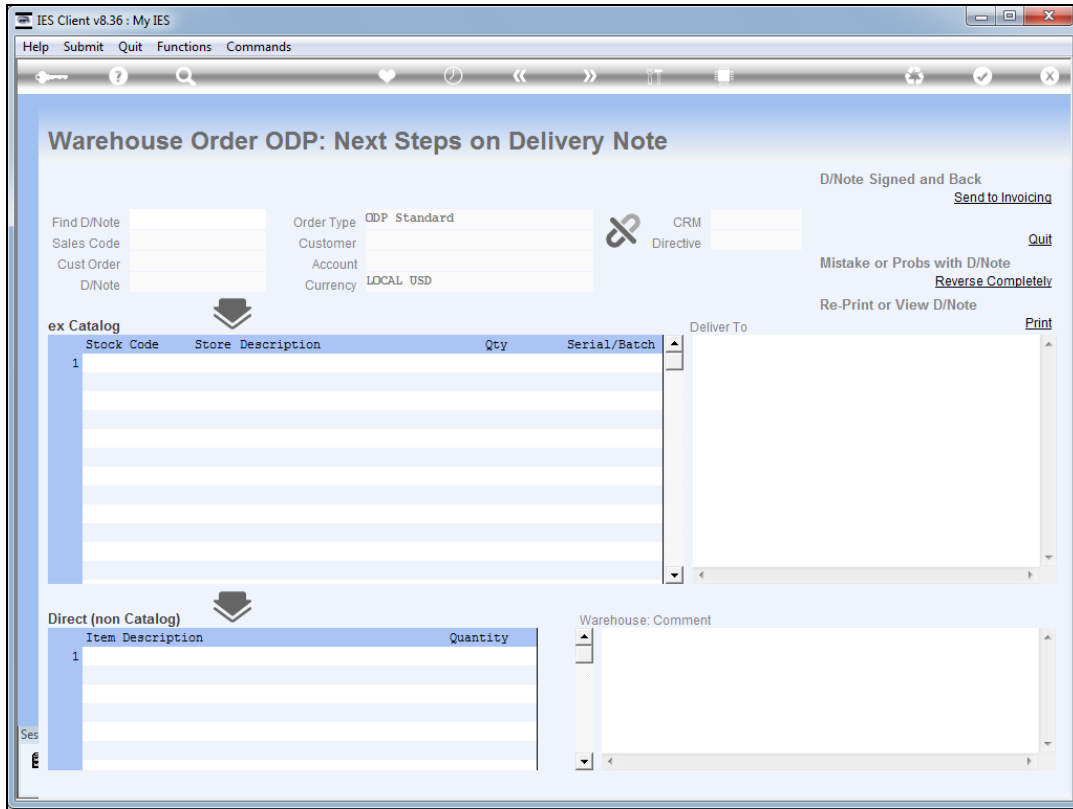
## Slide 1

Slide notes: An Open Delivery Note is processed after the 'New Delivery Note' was processed. Procedurally, the goods may be delivered 1st together with the Delivery Note, and when the Delivery Note is returned as "signed" then we process the Open Delivery Note and send it onwards for Invoicing.

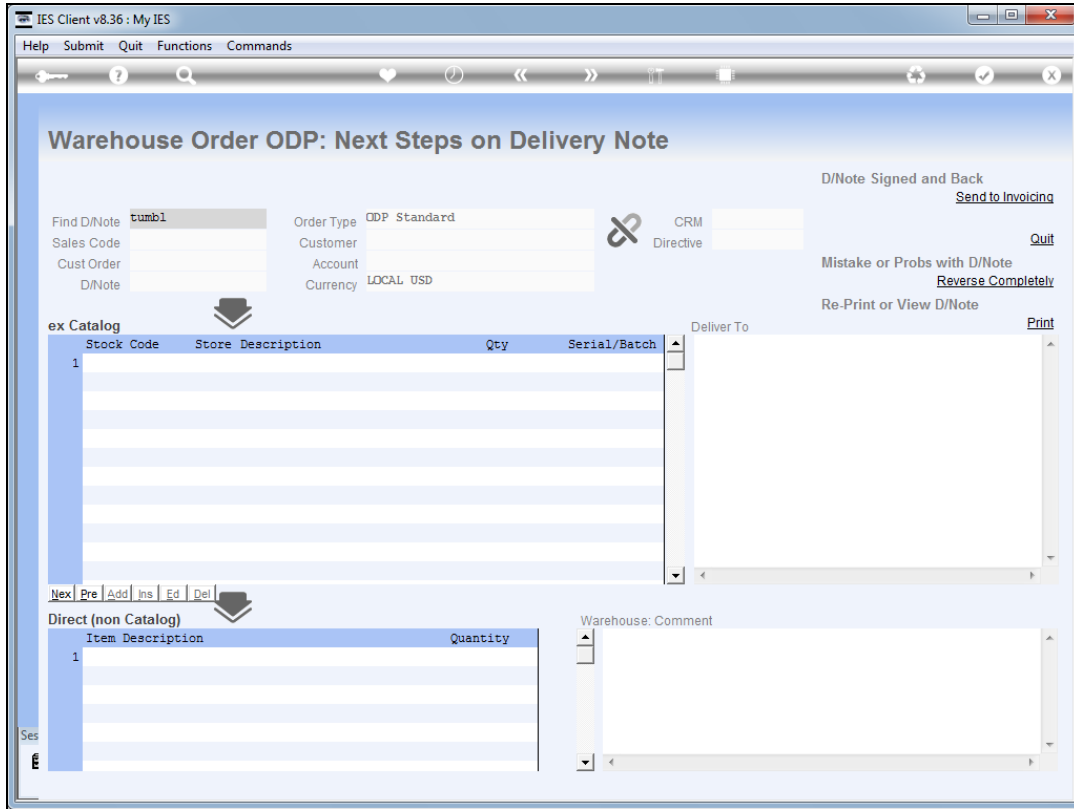
In the event that we dispatch the Invoice together with the goods, then we will process the Open Delivery Note immediately after processing the New Delivery Note, in order that the Invoice also can be processed.



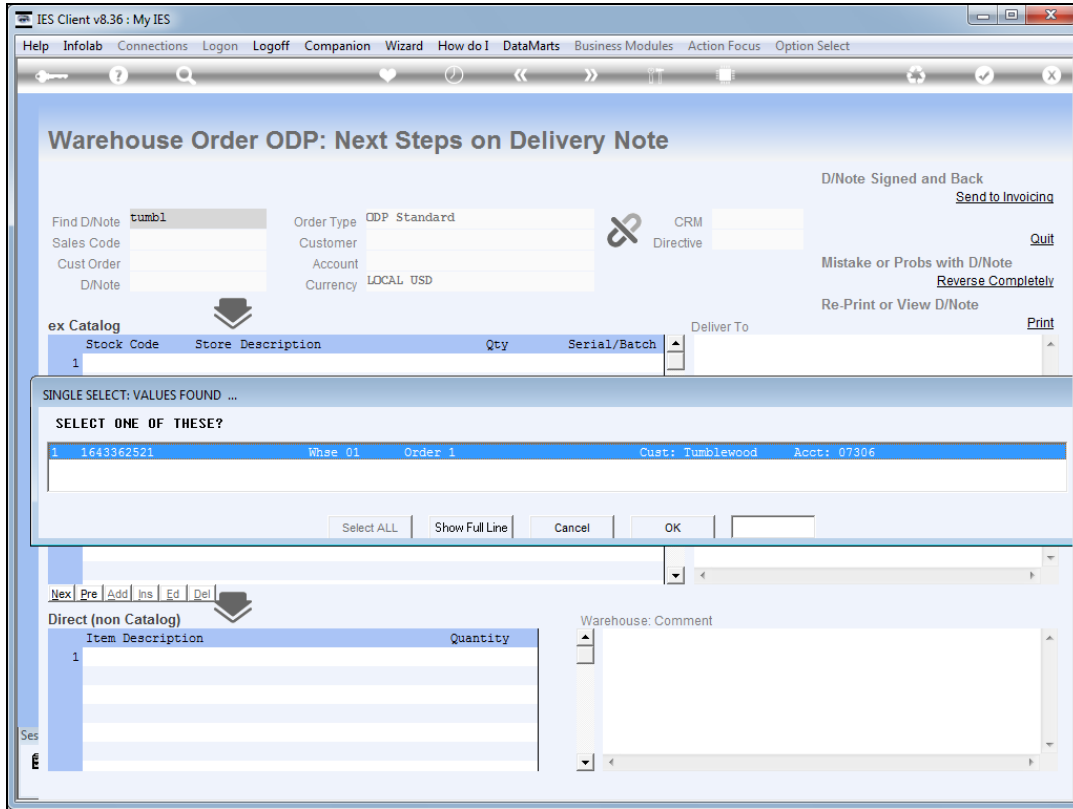
Slide 2  
Slide notes:



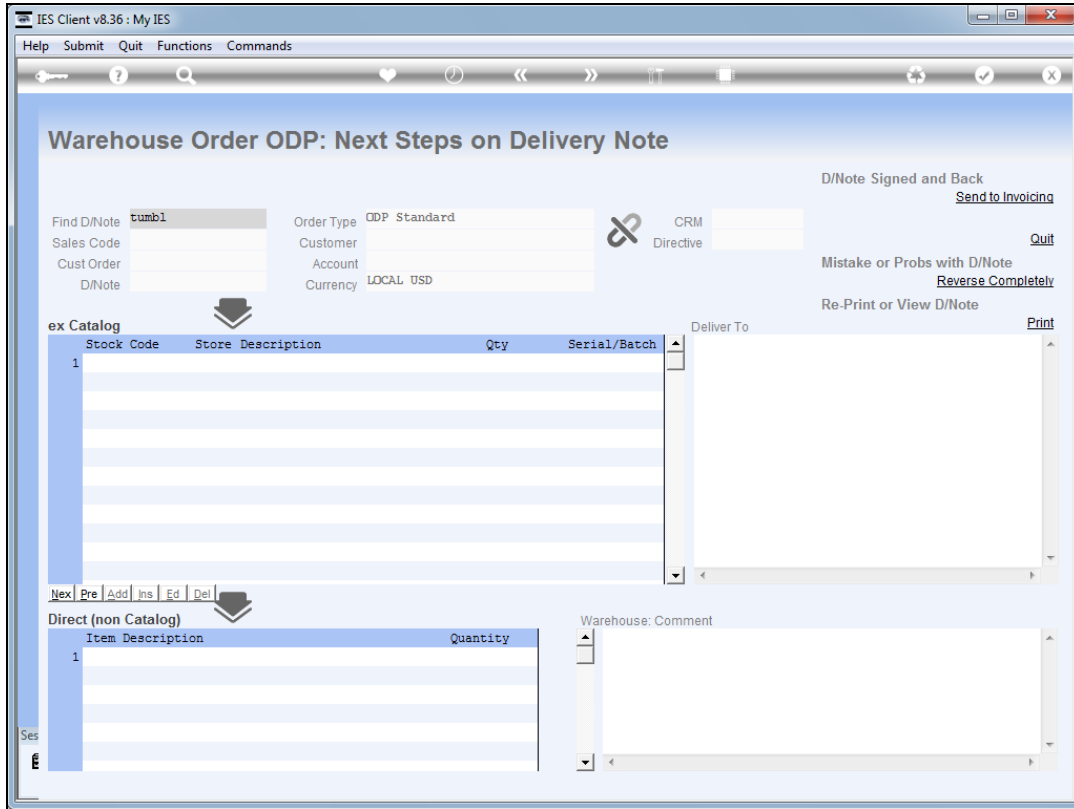
Slide 3  
Slide notes:



Slide 4  
Slide notes:



Slide 5  
Slide notes:



Slide 6  
Slide notes:

IES Client v8.36 : My IES

Help Submit Quit Functions Commands

### Warehouse Order ODP: Next Steps on Delivery Note

Find D/Note: 1643362521    Order Type: ODP Standard    CRM: 00492  
Sales Code: 02 Ryno    Customer: Tumblewood    Directive  
Cust Order: 1    Account: 07306  
D/Note: 001    Currency: LOCAL USD

D/Note Signed and Back    Send to Invoicing  
Mistake or Probs with D/Note    Quit  
Re-Print or View D/Note    Reverse Completely

ex Catalog

Stock Code	Store	Description	Qty	Serial/Batch
1 3008478	01	OLYMPUS L1-10B BATTERY	10.00	
2 0150021	01	OLYMPUS STYLUS ZOOM 120 QD	5.00	
3 3022131	01	OLYMPUS P400 PA4NE A4 PAPER	5.00	
4 3008064	01	OLYMPUS STYLUS 410 DIGITAL	10.00	
5 0150019	01	OLYMPUS STYLUS ZOOM 105 QD	2.00	
6 3022132	01	OLYMPUS P400 GLOSSY RIBBON	10.00	
7 3007174	01	NIKON COOLPIX 8800	3.00	
8 3007230	01	NIKON EN-EL1 BATTERY	12.00	
9 0243140	01	NIKON SB-800 FLASH	5.00	
10 0243138	01	NIKON SB-600 FLASH	10.00	
11 3022308	01	CANON PLUS 8.5x11 20 GLOSSY	2.00	
12 3022300	01	CANON MATTE 8.5x11 50	12.00	

Deliver To: 11413 - 1263 STREET, Suneria

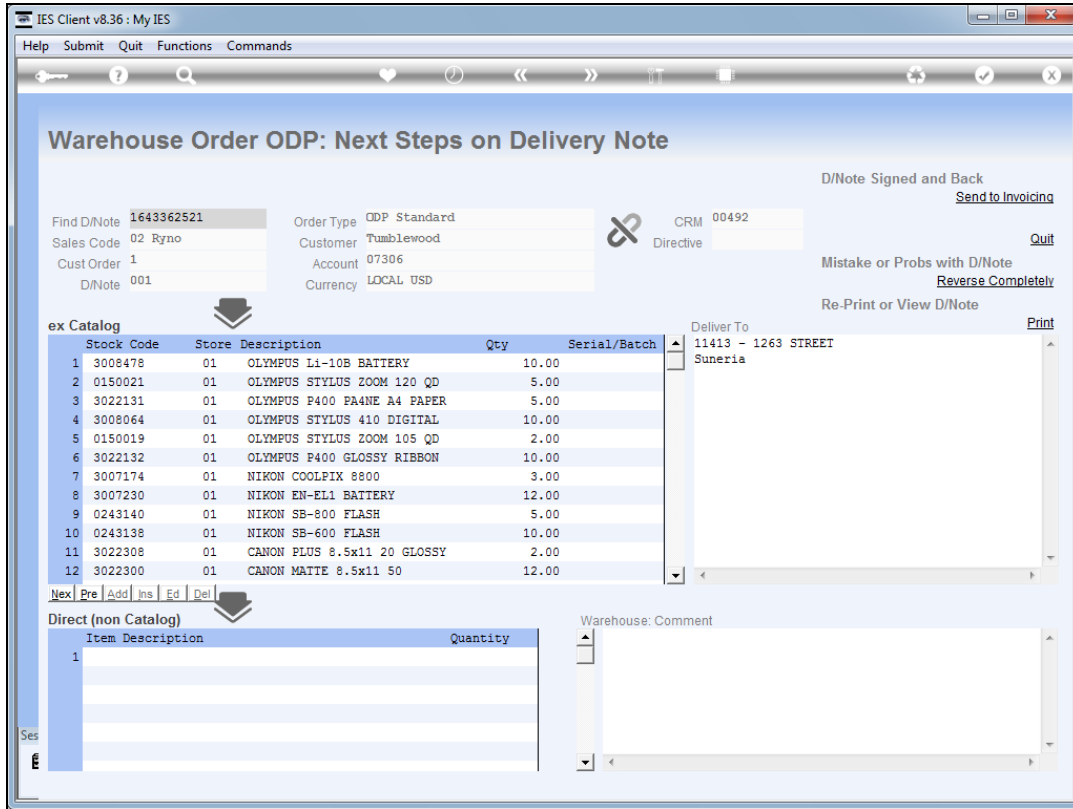
Direct (non Catalog)

Item	Description	Quantity
1		

Warehouse: Comment

Ses

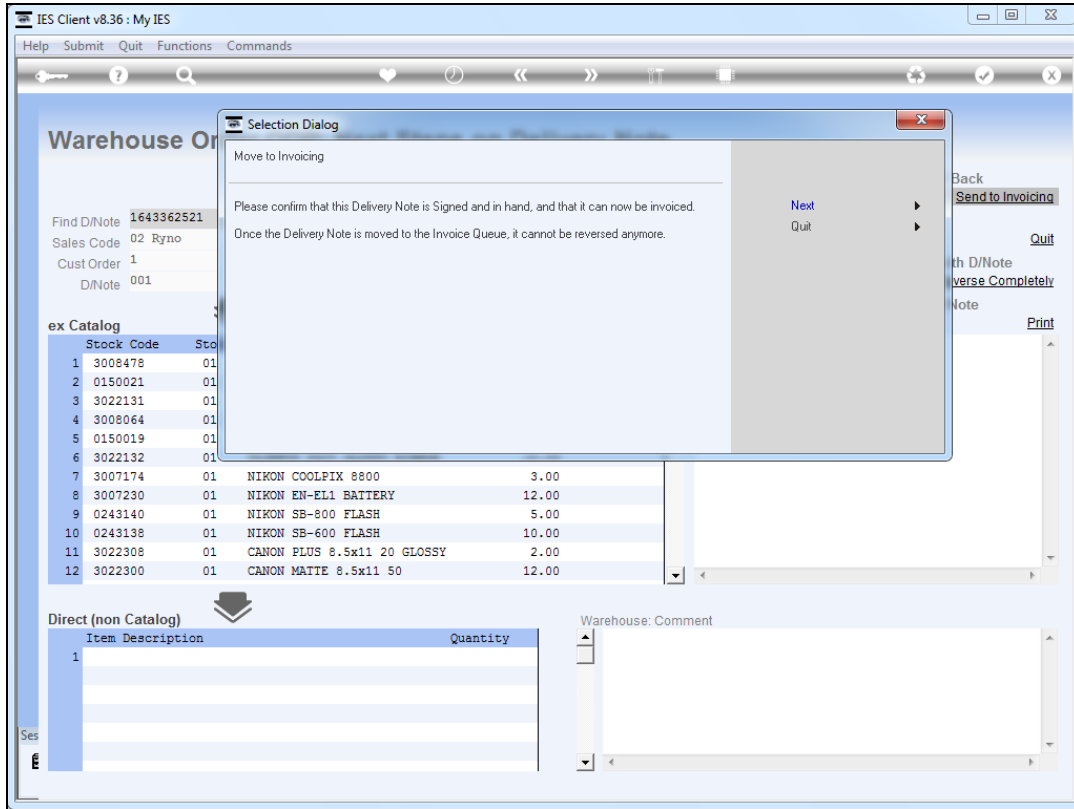
Slide 7  
Slide notes:



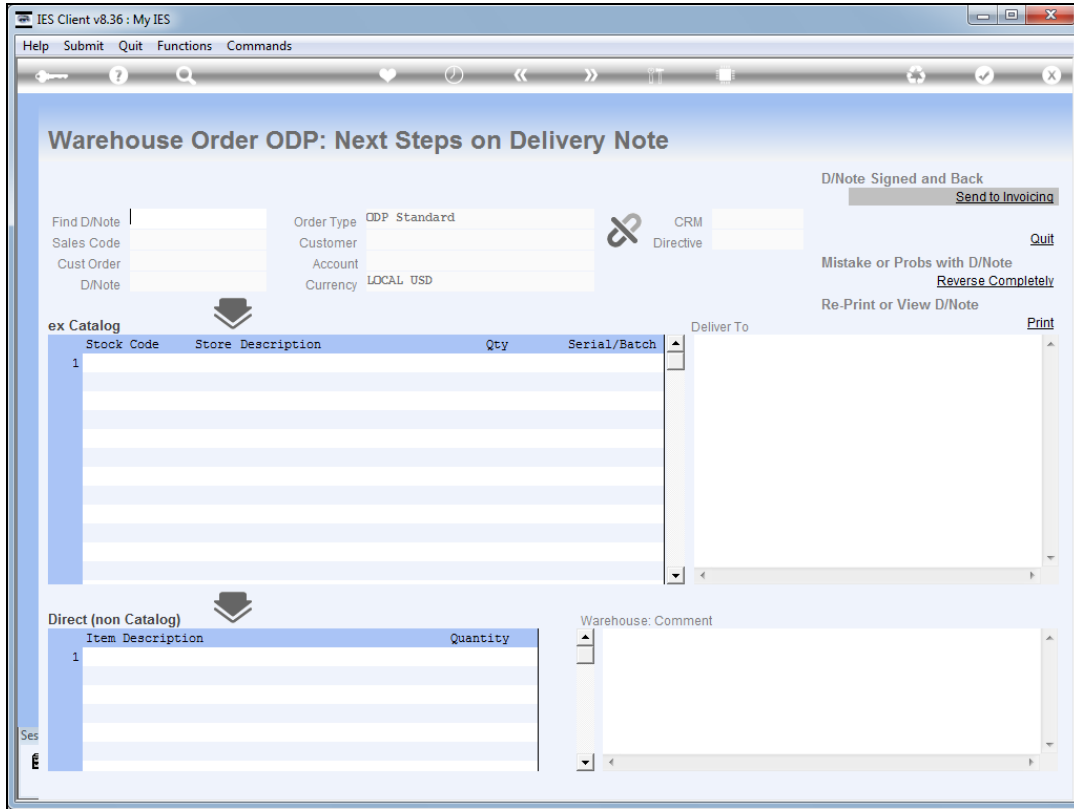
Slide 8

Slide notes: Unless we wish to reverse the Delivery Note or re-print it, we will send it onwards to the Invoicing tray.





Slide 9  
Slide notes:



Slide 10  
Slide notes: