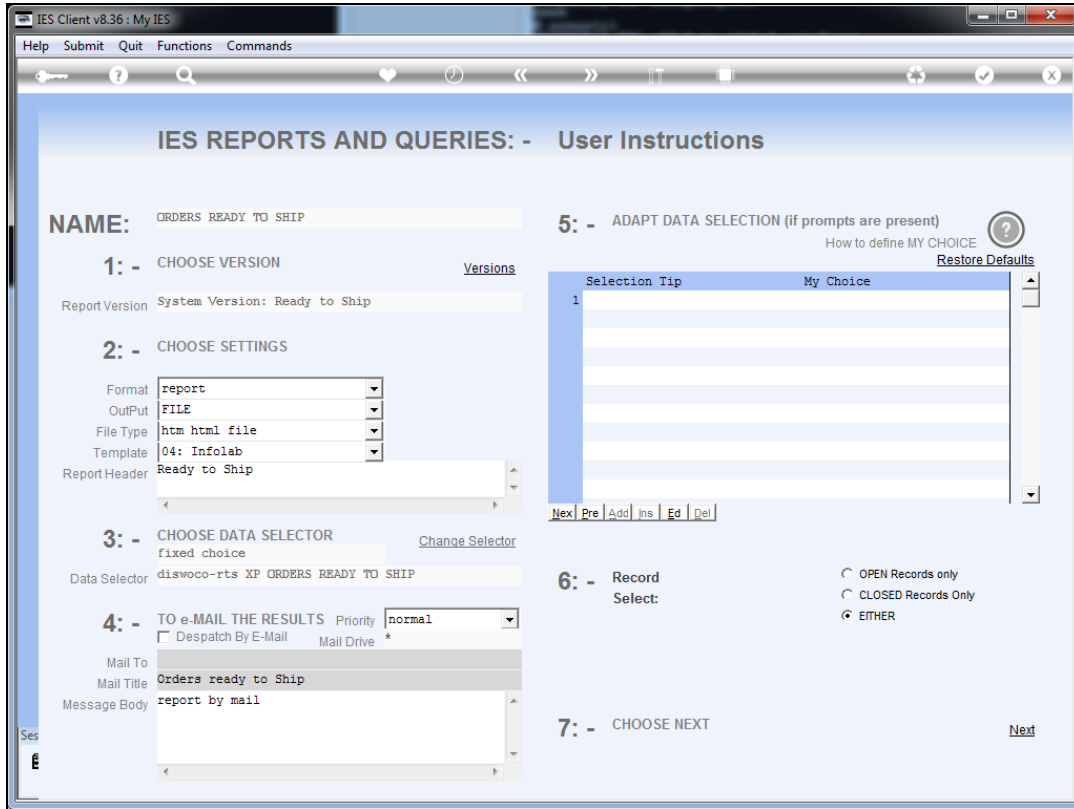


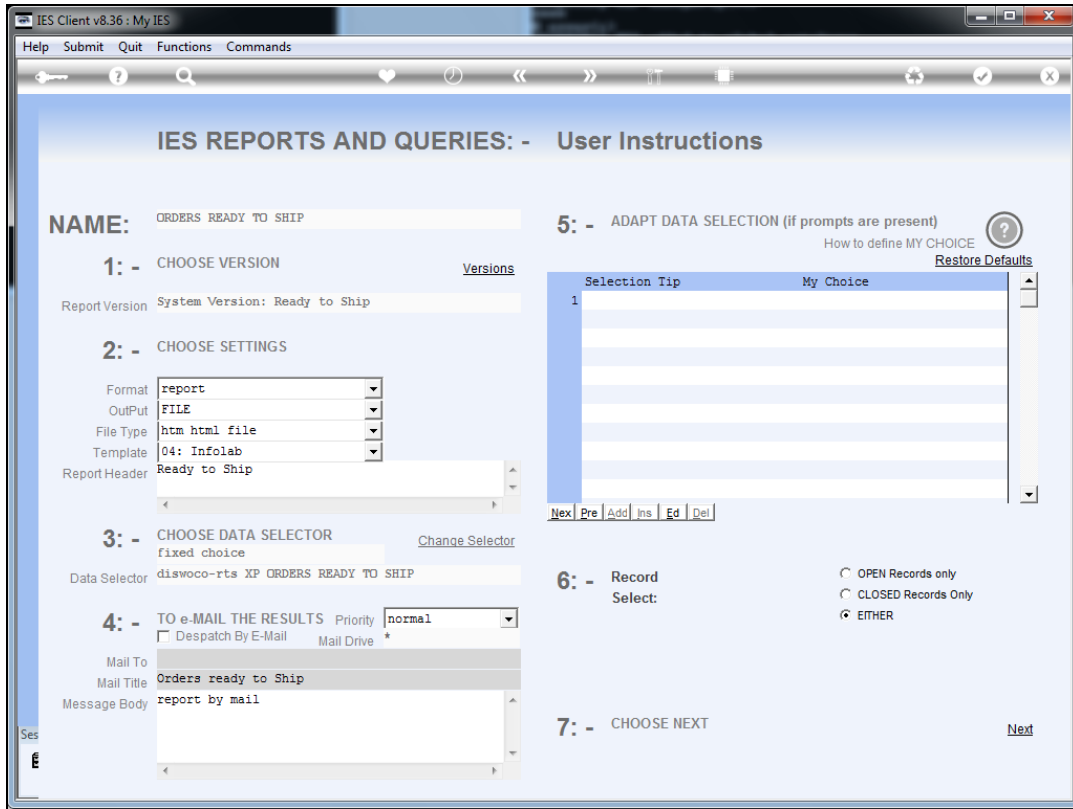


Slide 1

Slide notes: 'Ready to Ship' is a monitor report for Export Trade. It checks all open Sales Orders, then checks all the Purchase Orders on those Orders and as soon as all Items have been received for a Sales Order, then it qualifies for appearance at 'Ready to Ship'.



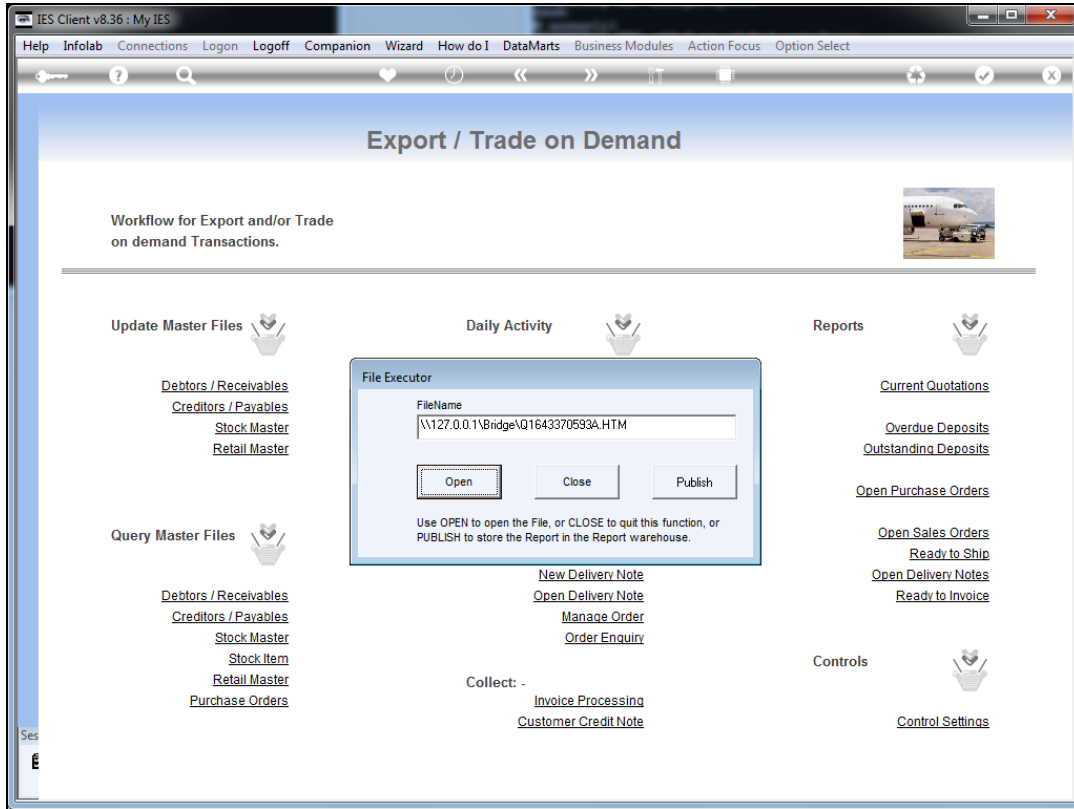
Slide 2  
Slide notes:



Slide 3  
Slide notes:



Slide 4  
Slide notes:



Slide 5  
Slide notes:

IES Client v8.36 : My IES

Help Infolab Connections Logon Logoff Companion Wizard How do I DataMarts Business Modules Action Focus Option Select

### Export / Trade on Demand

Workflow for Export and/or Trade on demand Transactions.

**Update Master Files**

- [Debtors / Receivables](#)
- [Creditors / Payables](#)
- [Stock Master](#)
- [Retail Master](#)

**Query Master Files**

- [Debtors / Receivables](#)
- [Creditors / Payables](#)
- [Stock Master](#)
- [Stock Item](#)
- [Retail Master](#)
- [Purchase Orders](#)

**Daily Activity**

**File Executor**

FileName  
\\127.0.0.1\bridge\Q1643370593A.HTM

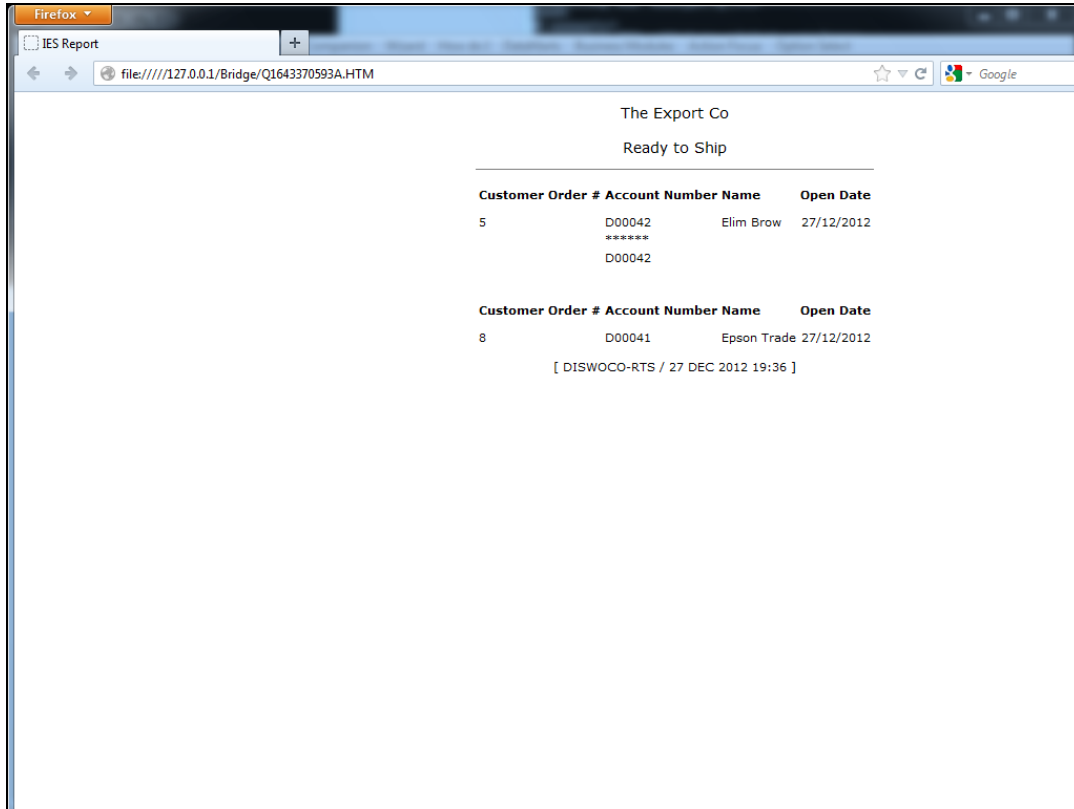
Use OPEN to open the File, or CLOSE to quit this function, or PUBLISH to store the Report in the Report warehouse.

- [New Delivery Note](#)
- [Open Delivery Note](#)
- [Manage Order](#)
- [Order Enquiry](#)

Collect: -

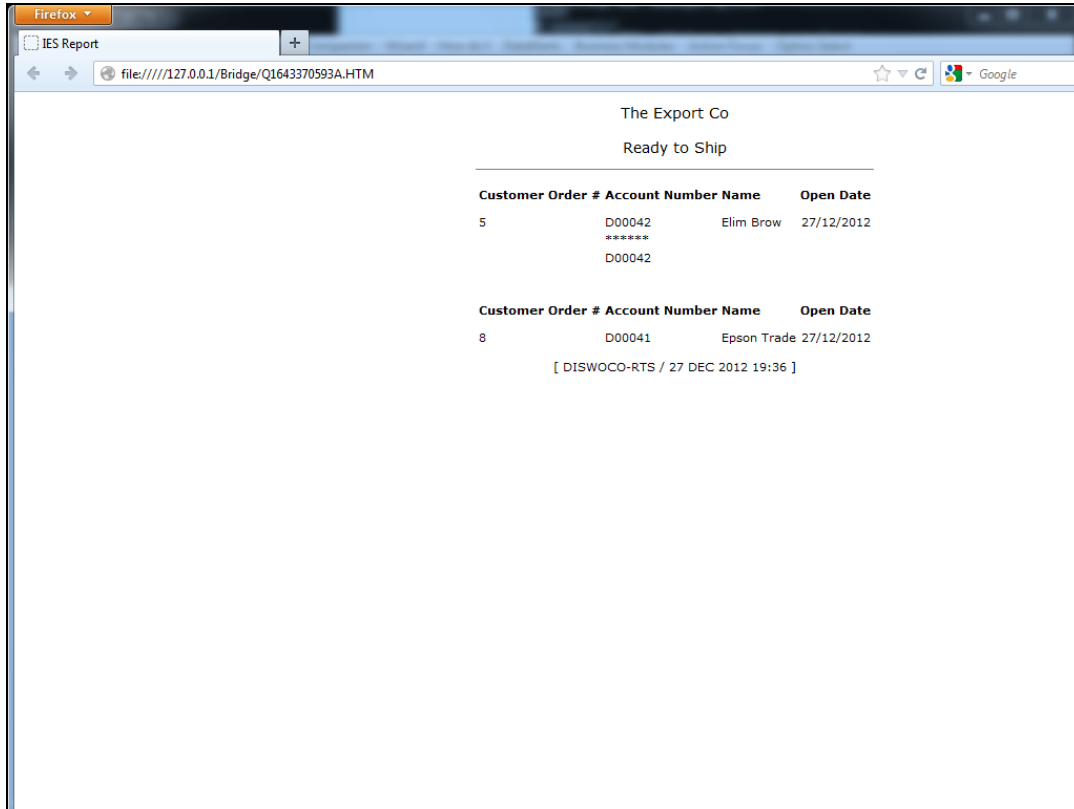
- [Invoice Processing](#)
- [Customer Credit Note](#)

Slide 6  
Slide notes:



Slide 7

Slide notes: Here we have 2 Sales Orders for which all the Stock has arrived, and they are ready to be delivered.



Slide 8  
Slide notes: