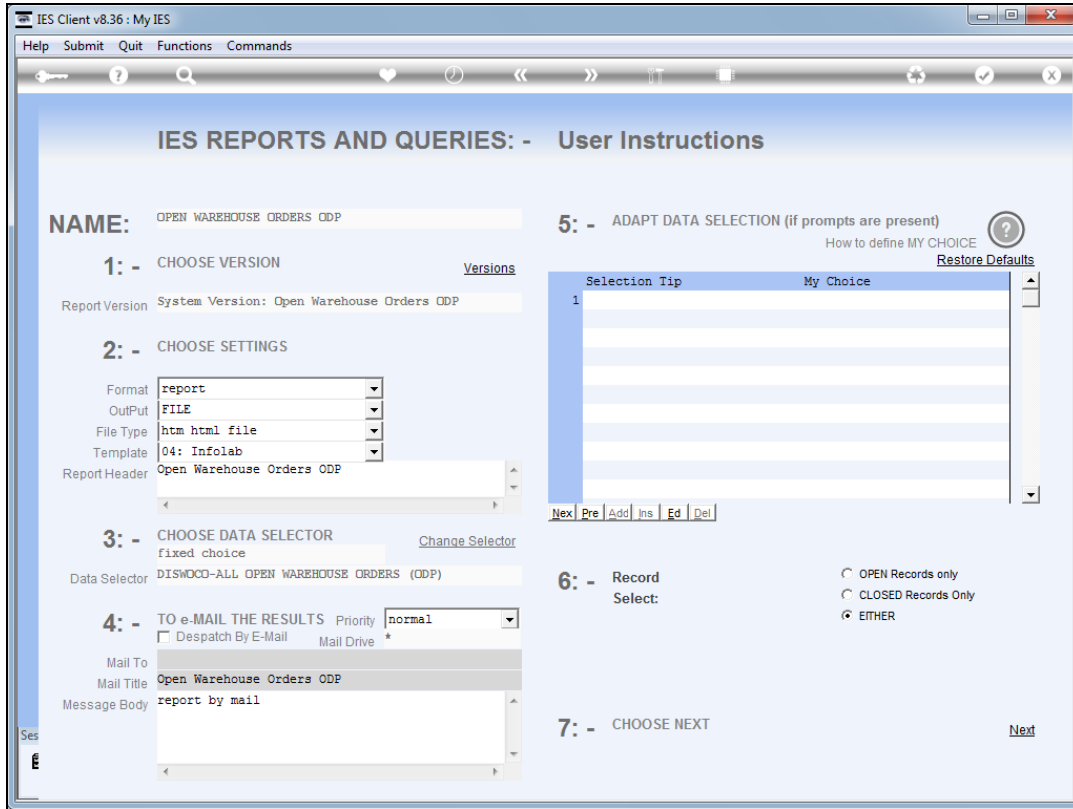
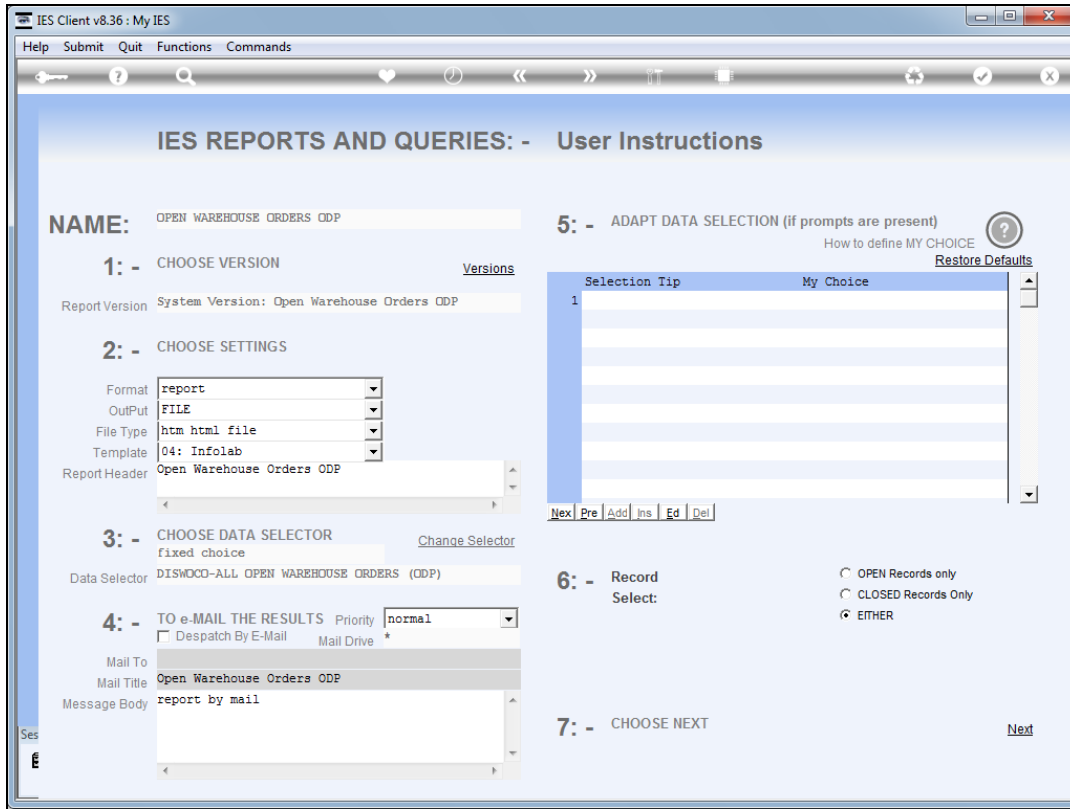


Slide 1

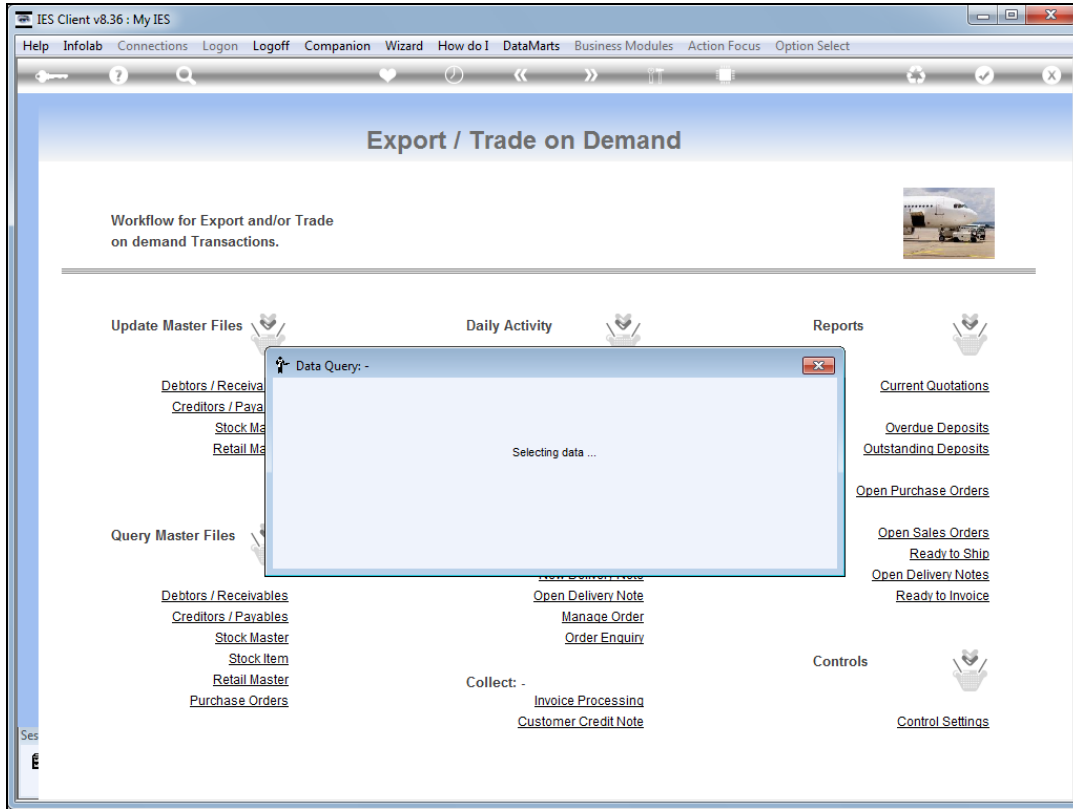
Slide notes: The 'Open Sales Orders' report will reveal all Customer Sales Orders that have already been converted from Quotation, but not yet fully delivered and closed.



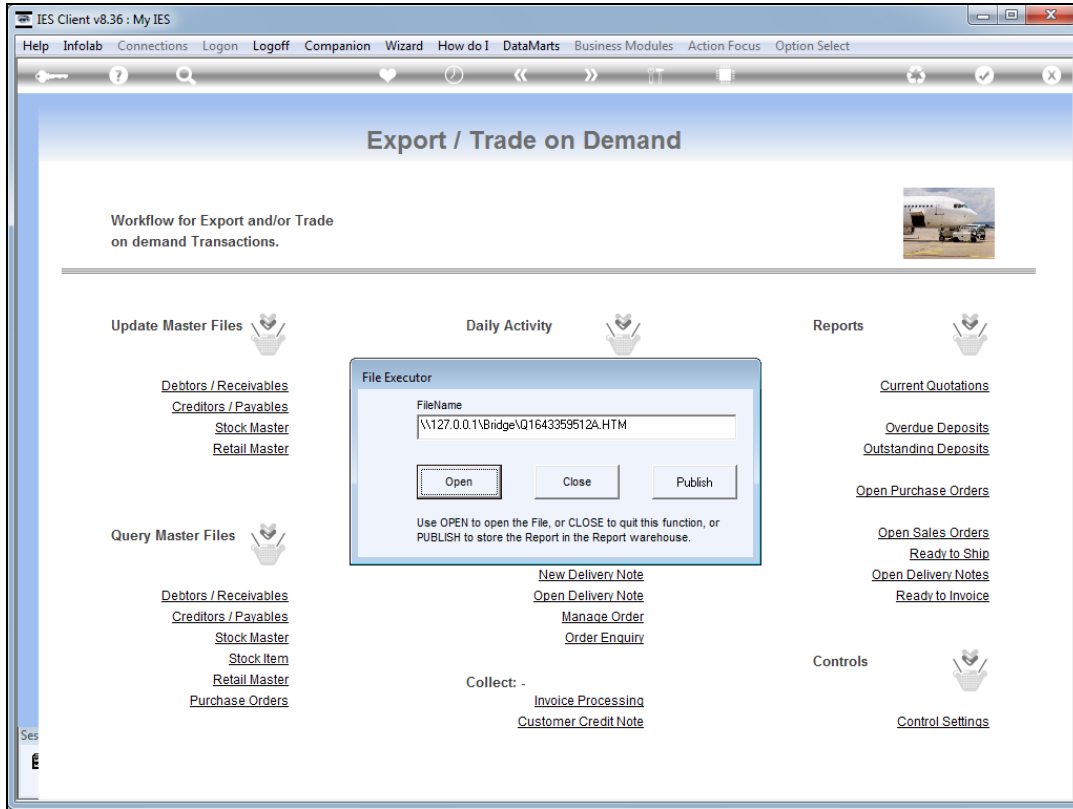
Slide 2
Slide notes:



Slide 3
Slide notes:



Slide 4
Slide notes:



Slide 5
Slide notes:

The screenshot shows the IES Client v8.36 application window. The title bar reads "IES Client v8.36 : My IES". The menu bar includes: Help, Infolab, Connections, Logon, Logoff, Companion, Wizard, How do I, DataMarts, Business Modules, Action Focus, Option Select. The browser address bar is empty. The main content area has a blue header with the text "Export / Trade on Demand". Below the header, it says "Workflow for Export and/or Trade on demand Transactions." and includes a small image of a truck. The interface is organized into several sections:

- Update Master Files:** Includes links for Debtors / Receivables, Creditors / Payables, Stock Master, and Retail Master.
- Query Master Files:** Includes links for Debtors / Receivables, Creditors / Payables, Stock Master, Stock Item, Retail Master, and Purchase Orders.
- Daily Activity:** A central section with a "File Executor" dialog box open. The dialog box has a "FileName" field containing "\\127.0.0.1\bridge\Q1643359512A.HTM" and buttons for "Open", "Close", and "Publish". Below the buttons, it says: "Use OPEN to open the File, or CLOSE to quit this function, or PUBLISH to store the Report in the Report warehouse." Below the dialog box are links for "New Delivery Note", "Open Delivery Note", "Manage Order", and "Order Enquiry".
- Reports:** Includes links for Current Quotations, Overdue Deposits, Outstanding Deposits, Open Purchase Orders, Open Sales Orders, Ready to Ship, Open Delivery Notes, and Ready to Invoice.
- Controls:** Includes a link for Control Settings.
- Collect:** Includes links for Invoice Processing and Customer Credit Note.

Slide 6
Slide notes:

The Export Co
Open Warehouse Orders ODP

Customer Order #	Account Number	Name	Open Date
4	D00042	Elim Brow	27/12/2012
5	D00042	Elim Brow	27/12/2012

	D00042		
Customer Order #	Account Number	Name	Open Date
8	D00041	Epson Trade	27/12/2012

	D00041		
Customer Order #	Account Number	Name	Open Date
1	07306	Tumblewood	26/12/2012

[DISWOCO / 27 DEC 2012 16:31]

Slide 7

Slide notes: The Open Sales Orders are sorted by Customer.

The Export Co
Open Warehouse Orders ODP

Customer Order #	Account Number	Name	Open Date
4	D00042	Elim Brow	27/12/2012
5	D00042	Elim Brow	27/12/2012

	D00042		
Customer Order #	Account Number	Name	Open Date
8	D00041	Epson Trade	27/12/2012

	D00041		
Customer Order #	Account Number	Name	Open Date
1	07306	Tumblewood	26/12/2012

[DISWOCO / 27 DEC 2012 16:31]

Slide 8
Slide notes: