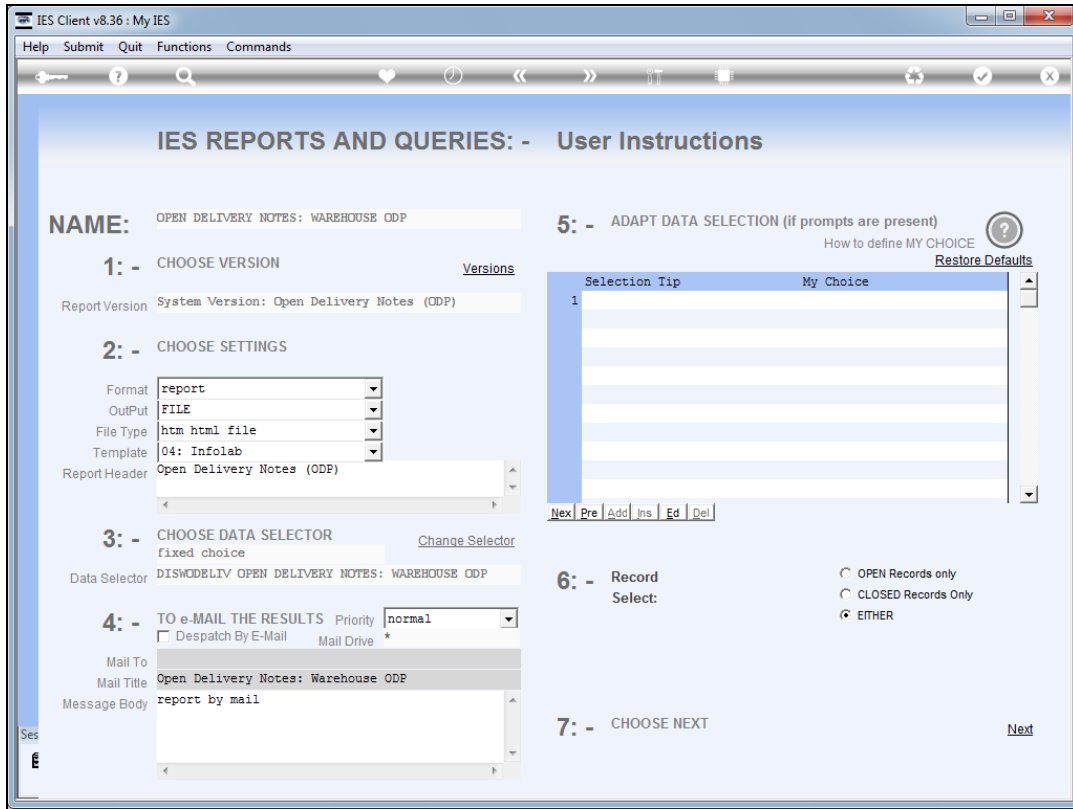
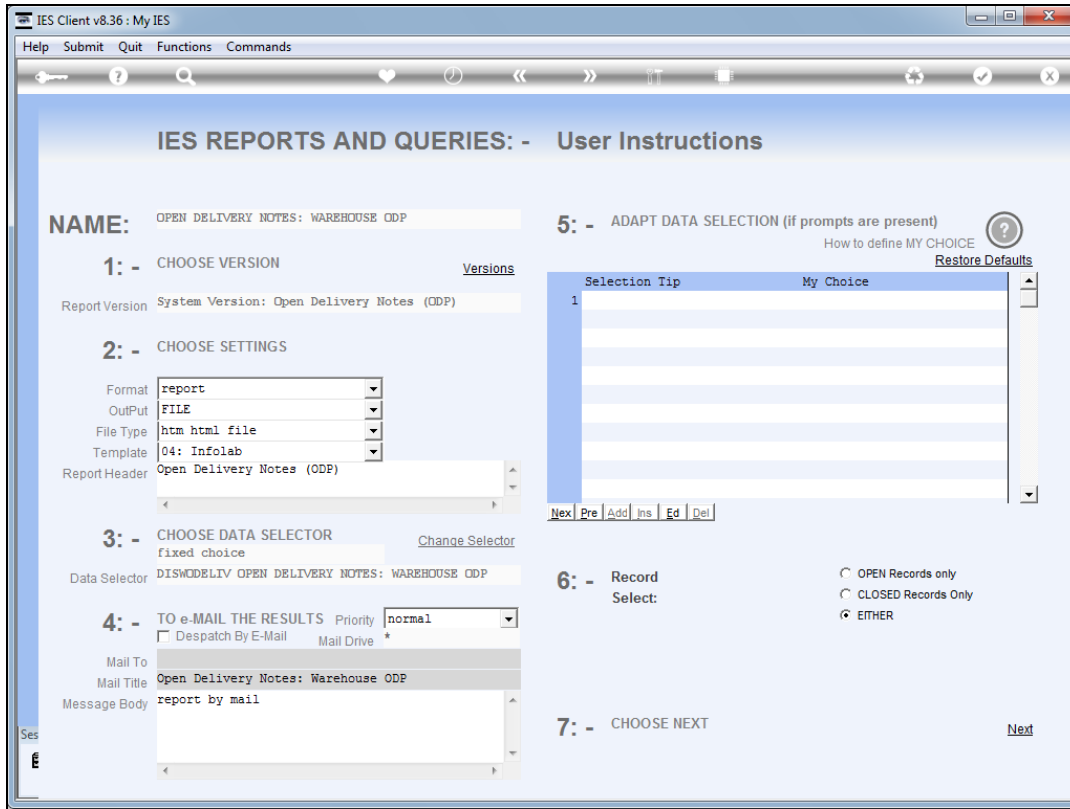


Slide 1

Slide notes: We have a Report option for Open Delivery Notes.



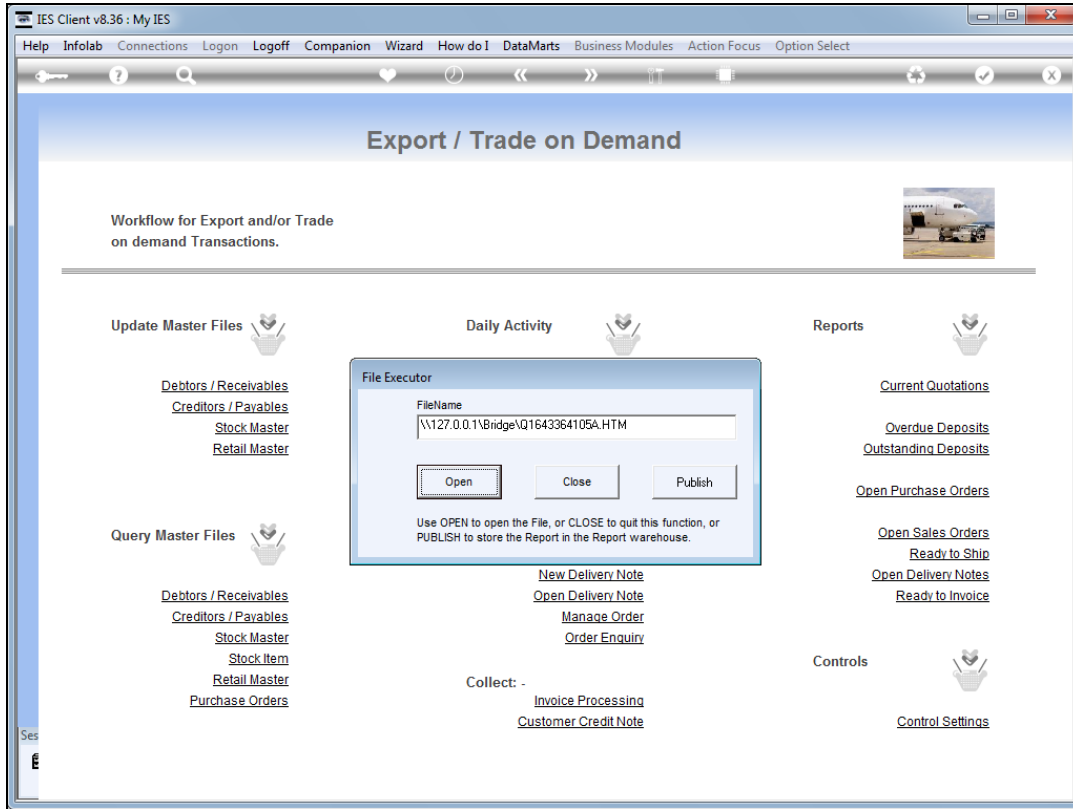
Slide 2
Slide notes:



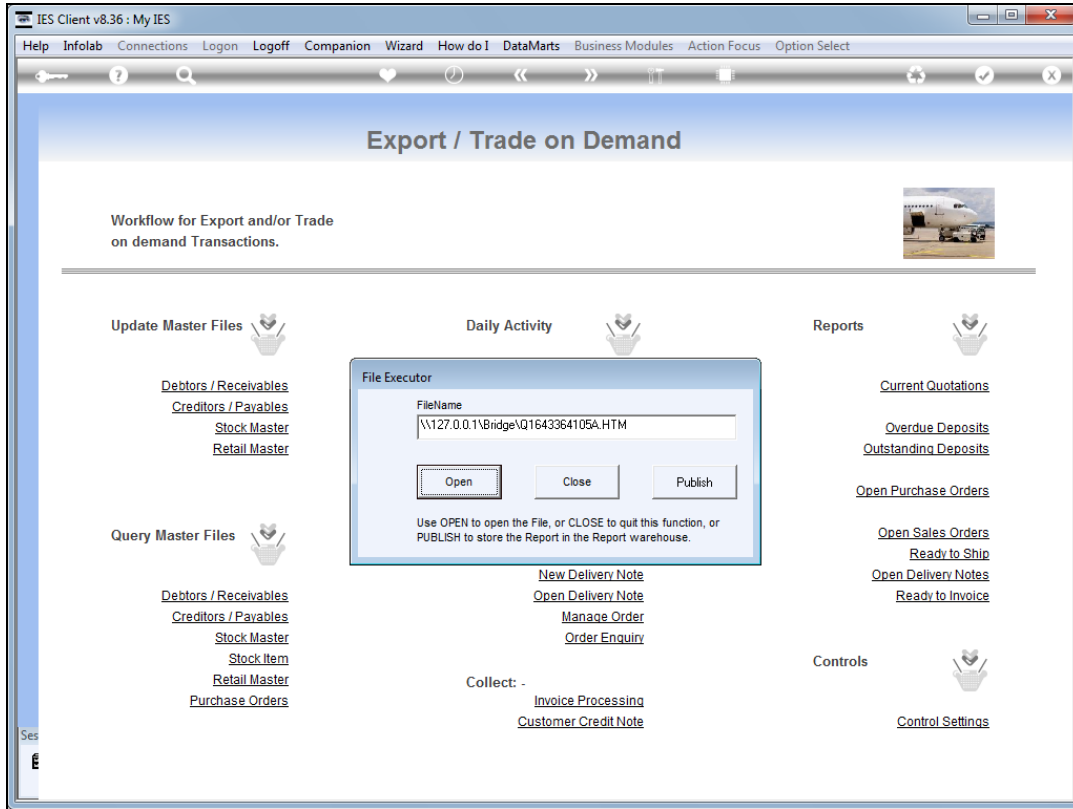
Slide 3
Slide notes:



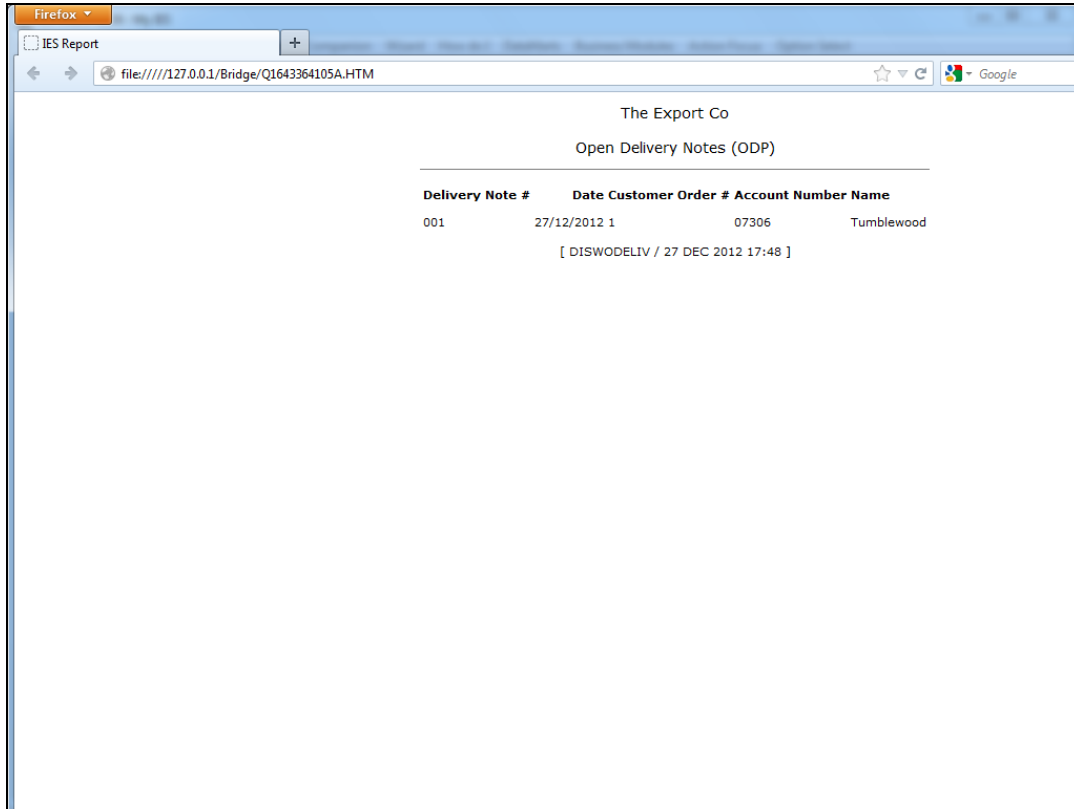
Slide 4
Slide notes:



Slide 5
Slide notes:

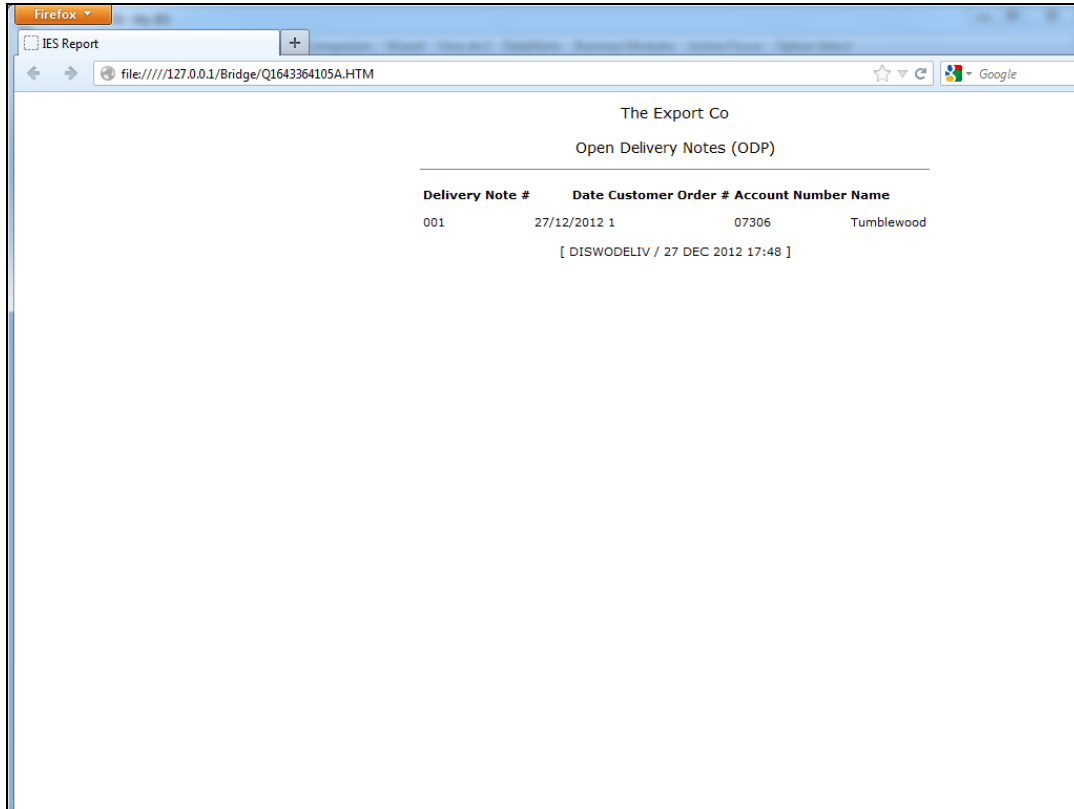


Slide 6
Slide notes:



Slide 7

Slide notes: In this case, we have 1 open Delivery Note. When we await return of signed delivery notes before we process the Invoice, then this Report is useful to reveal Delivery Notes that we are waiting to be returned as "signed and delivered". When we ship goods locally or abroad together with the Invoice, then this report will usually have less value, since we will then process the Open Delivery Notes immediately after processing the New Delivery Notes, followed by processing of the Invoices.



Slide 8
Slide notes: