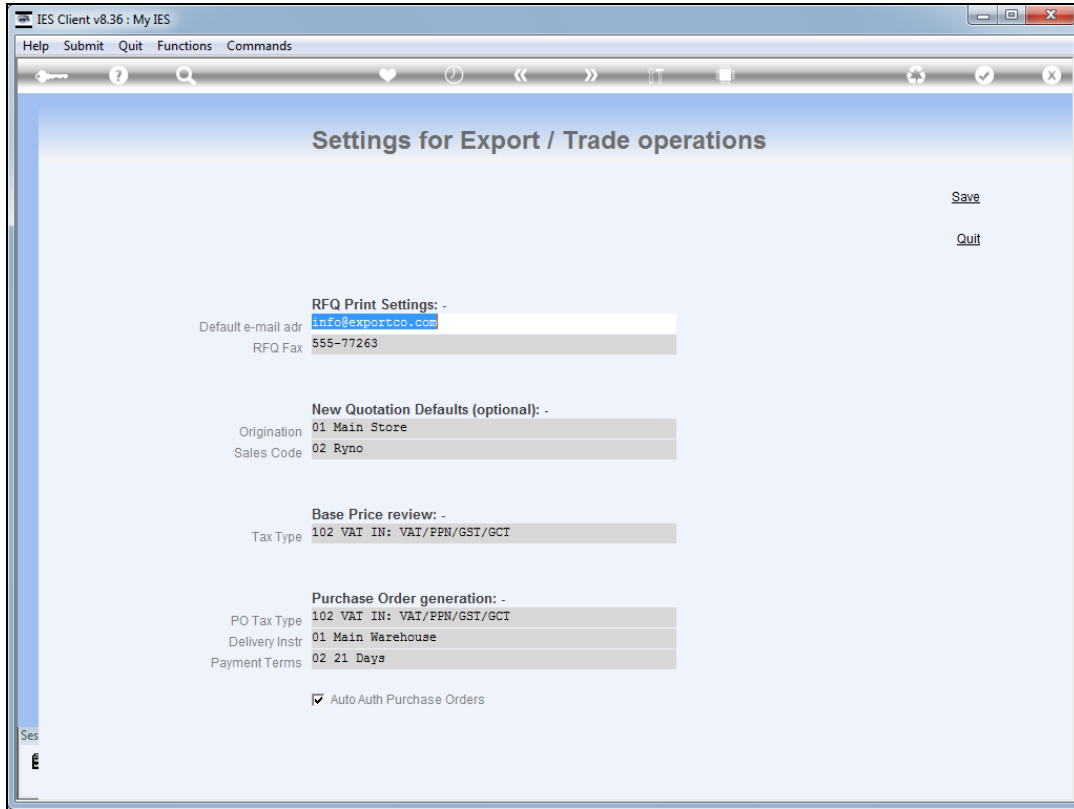


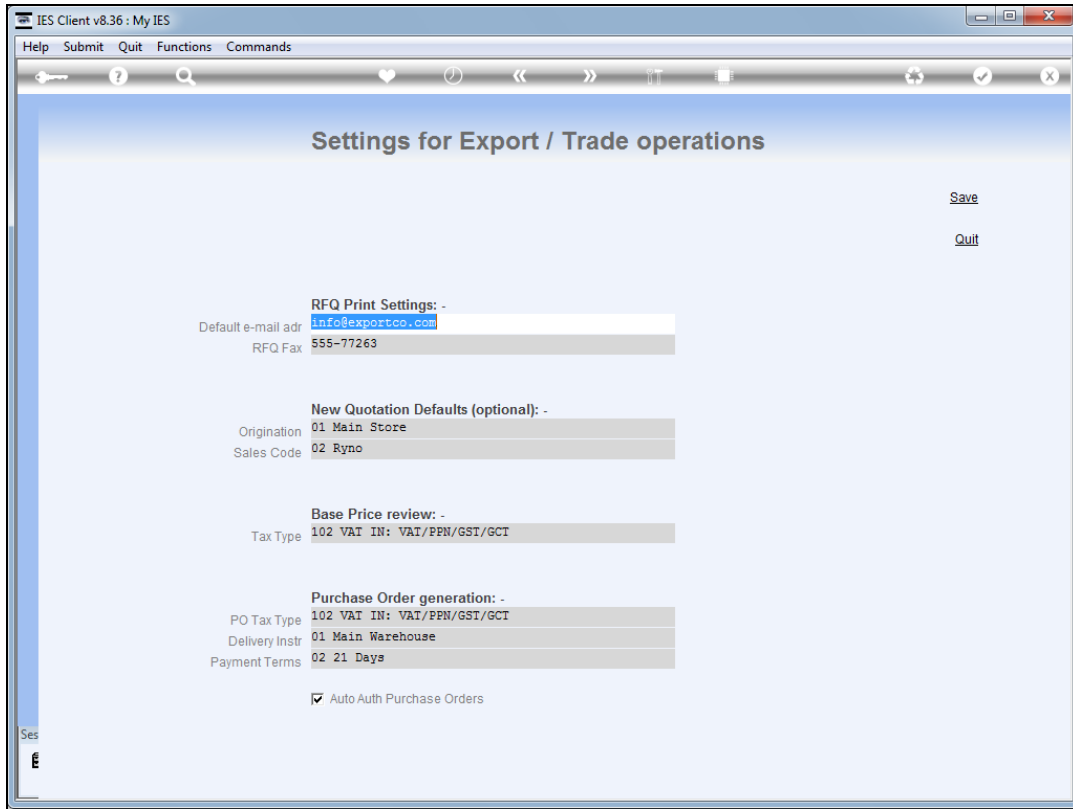
Slide 1

Slide notes: At the Export Trade menu, we need to define our Control Settings before we engage in using the Export Trade workflow.

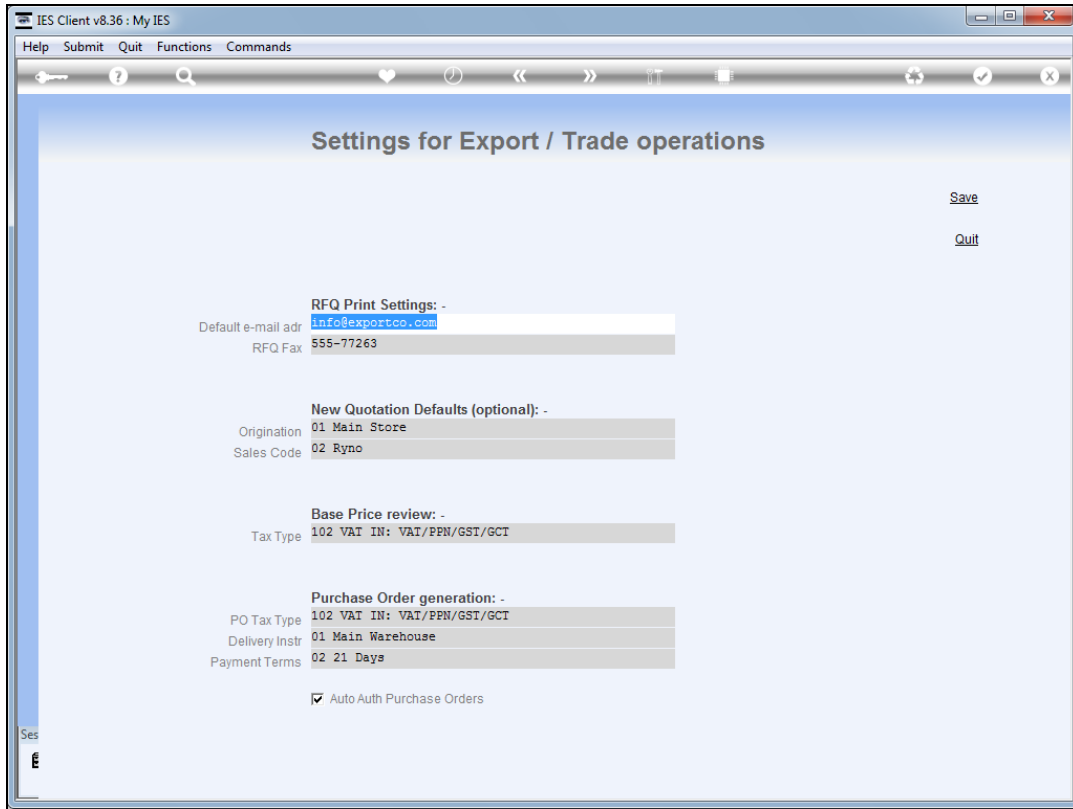


Slide 2

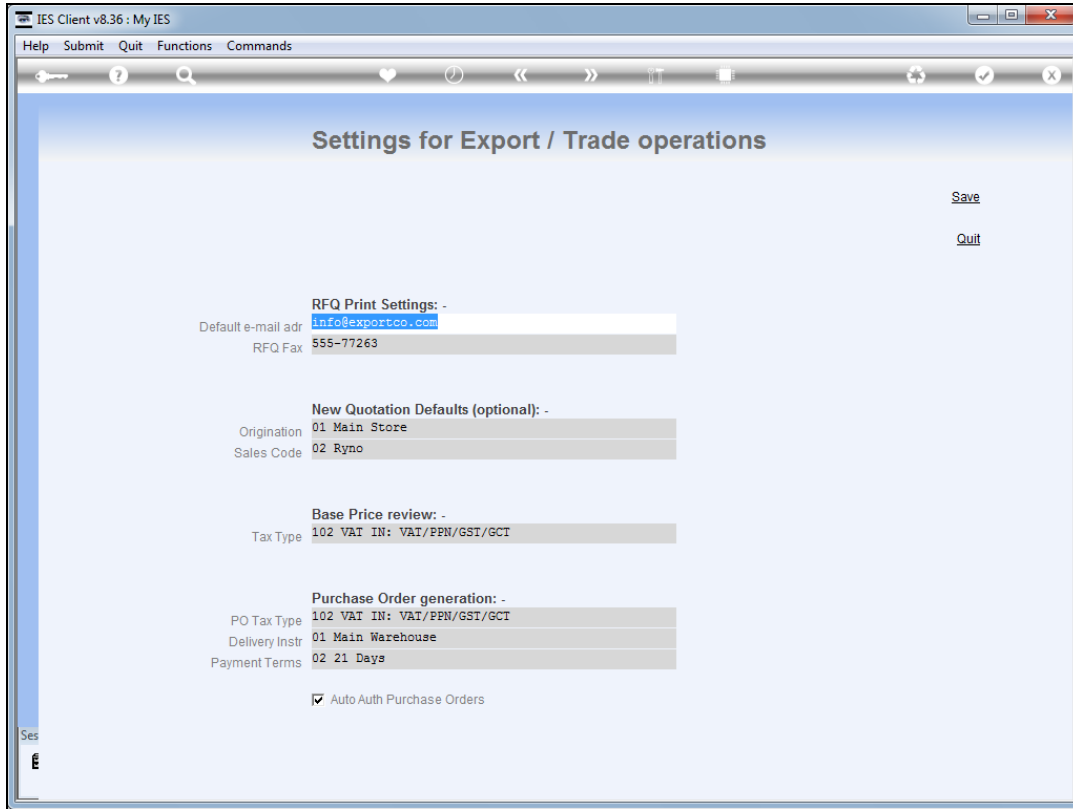
Slide notes: The RFQ Print settings are used when we print "Request for Quotation" documents to enlist bids for supply of goods.



Slide 3
Slide notes:

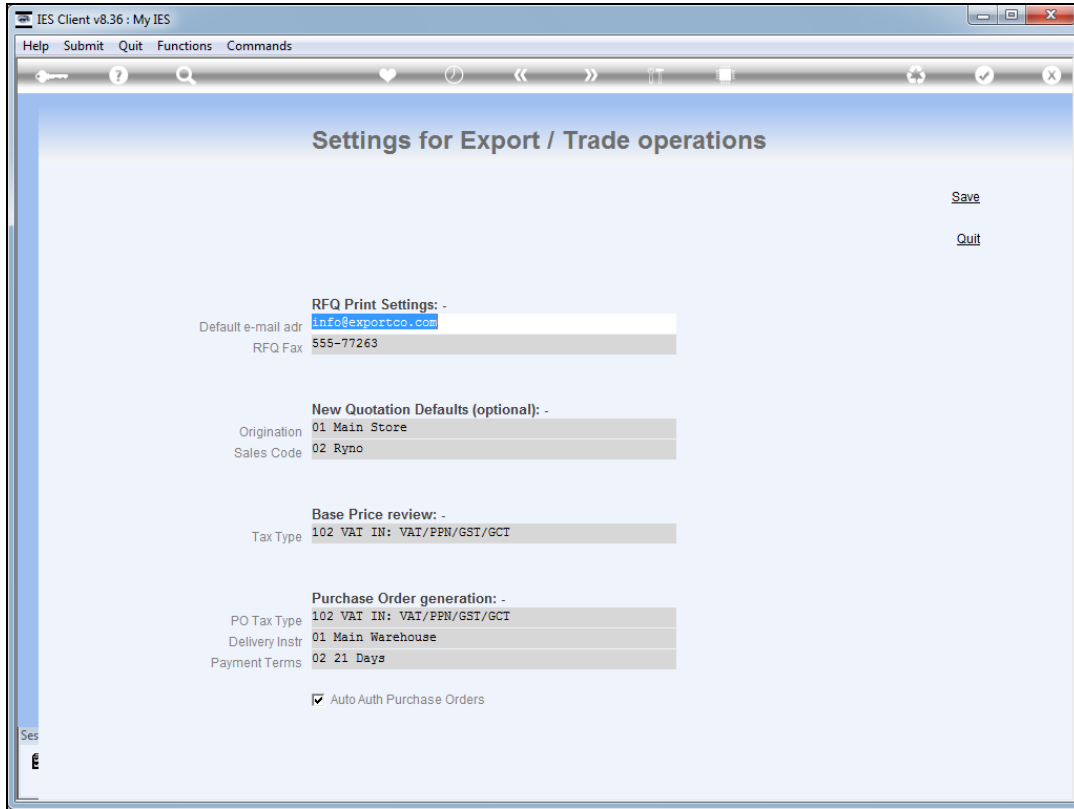


Slide 4
Slide notes:

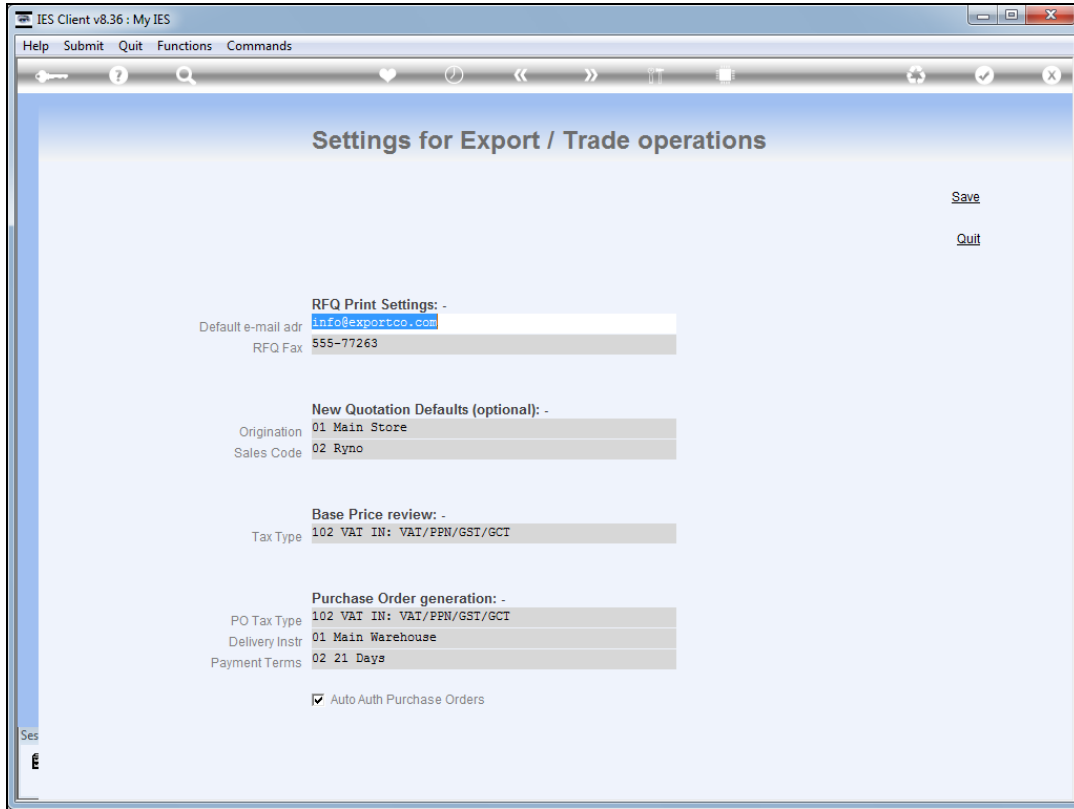


Slide 5

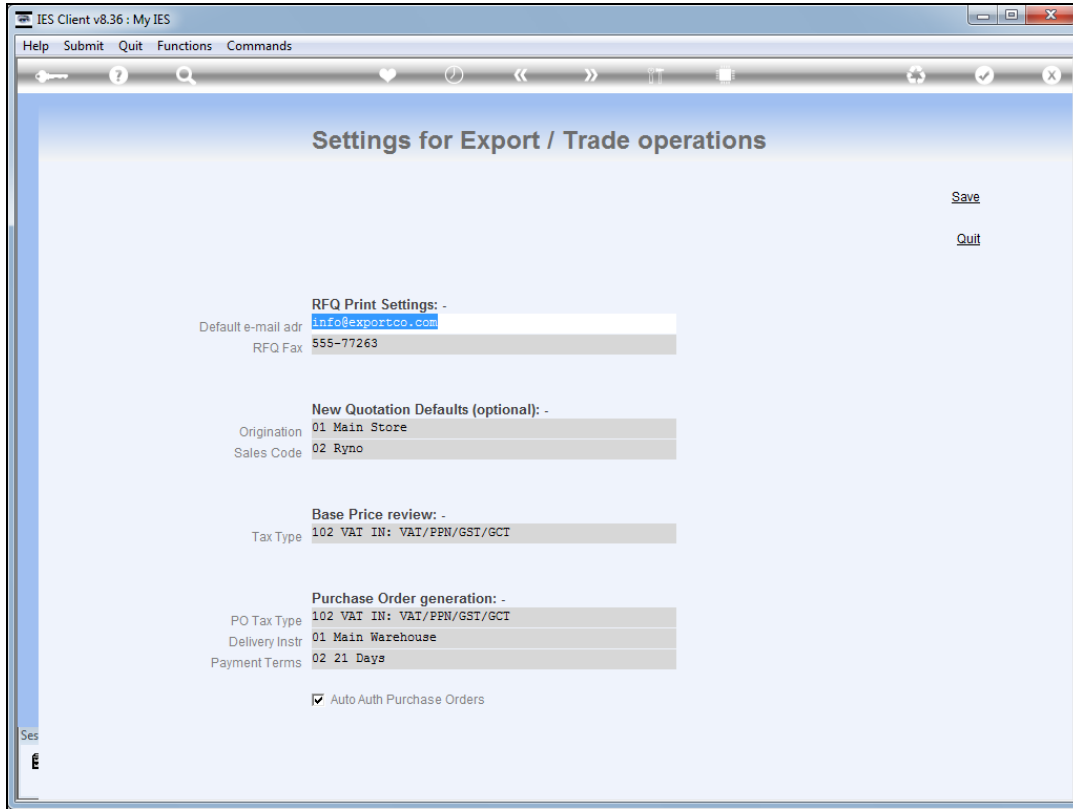
Slide notes: The new Quotation defaults are optional. If we do not specify them, then a User has to select these values for each new Quotation, and if we do specify them, then they are automatically included with each new Quotation but can still be changed.



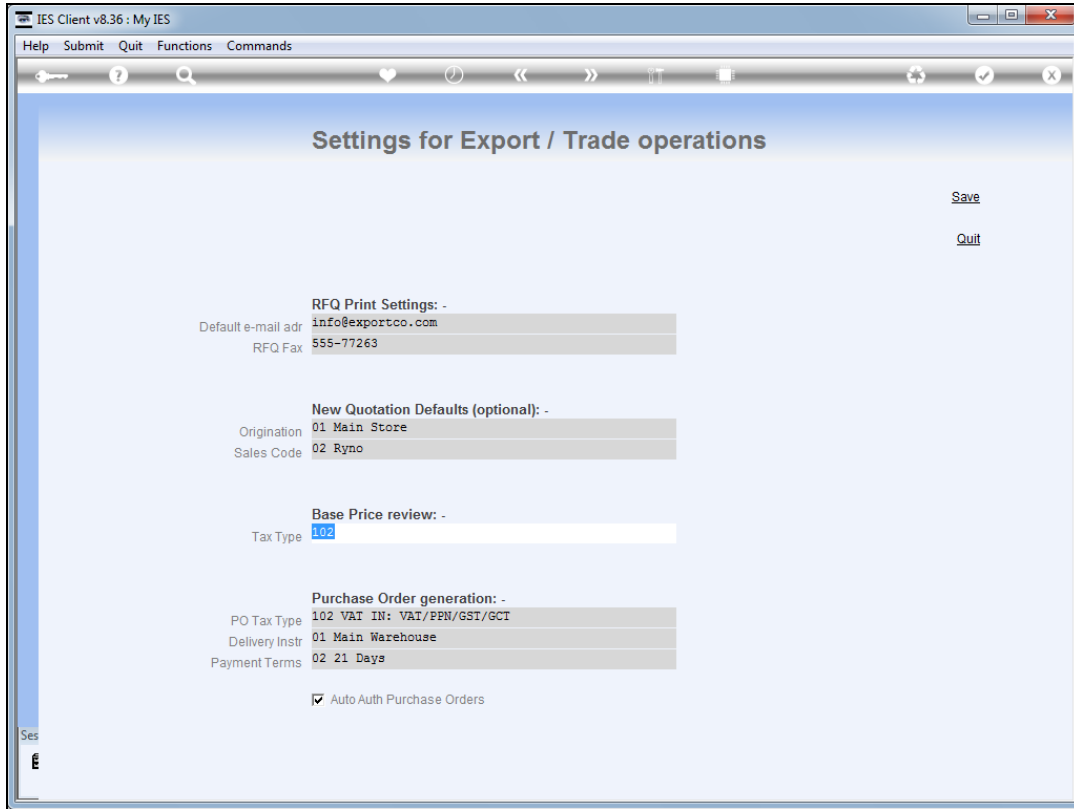
Slide 6
Slide notes:



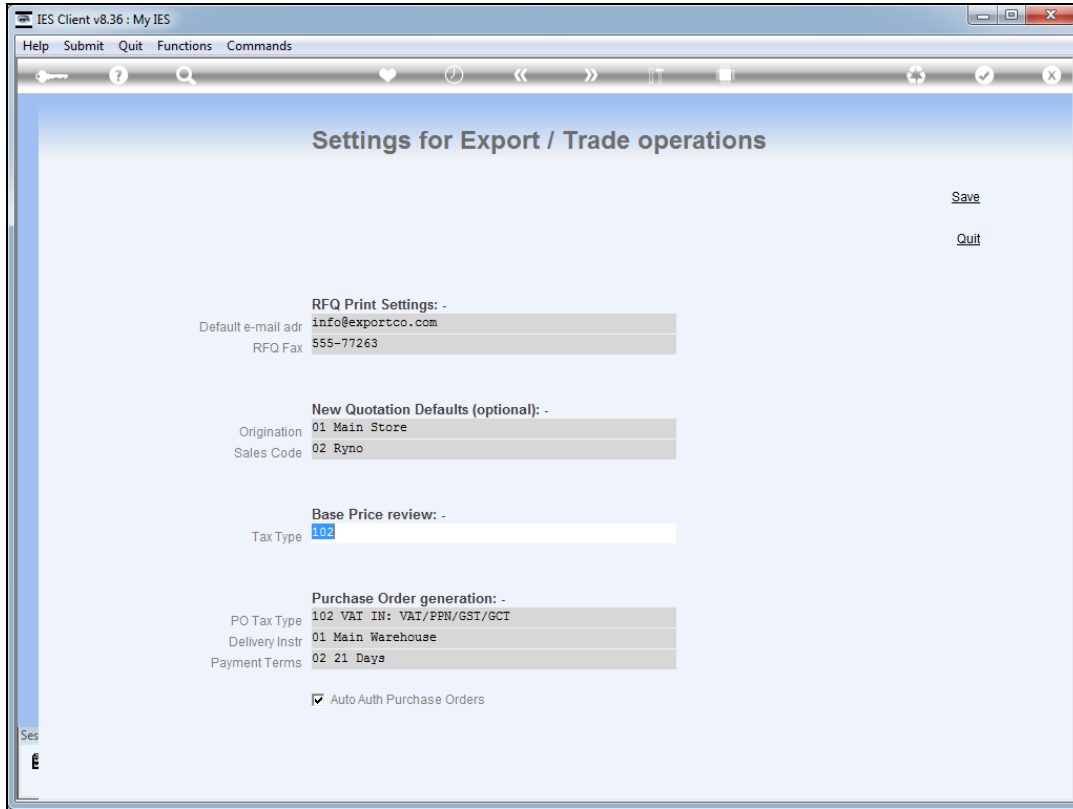
Slide 7
Slide notes:



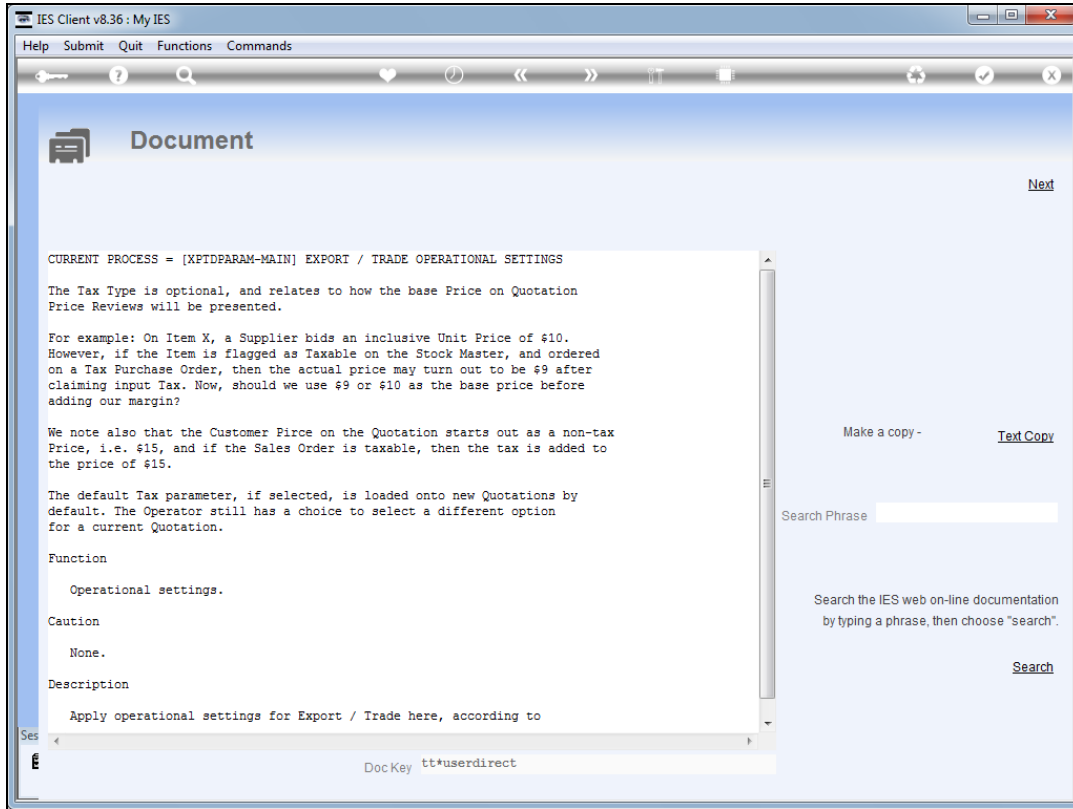
Slide 8
Slide notes:



Slide 9
Slide notes:

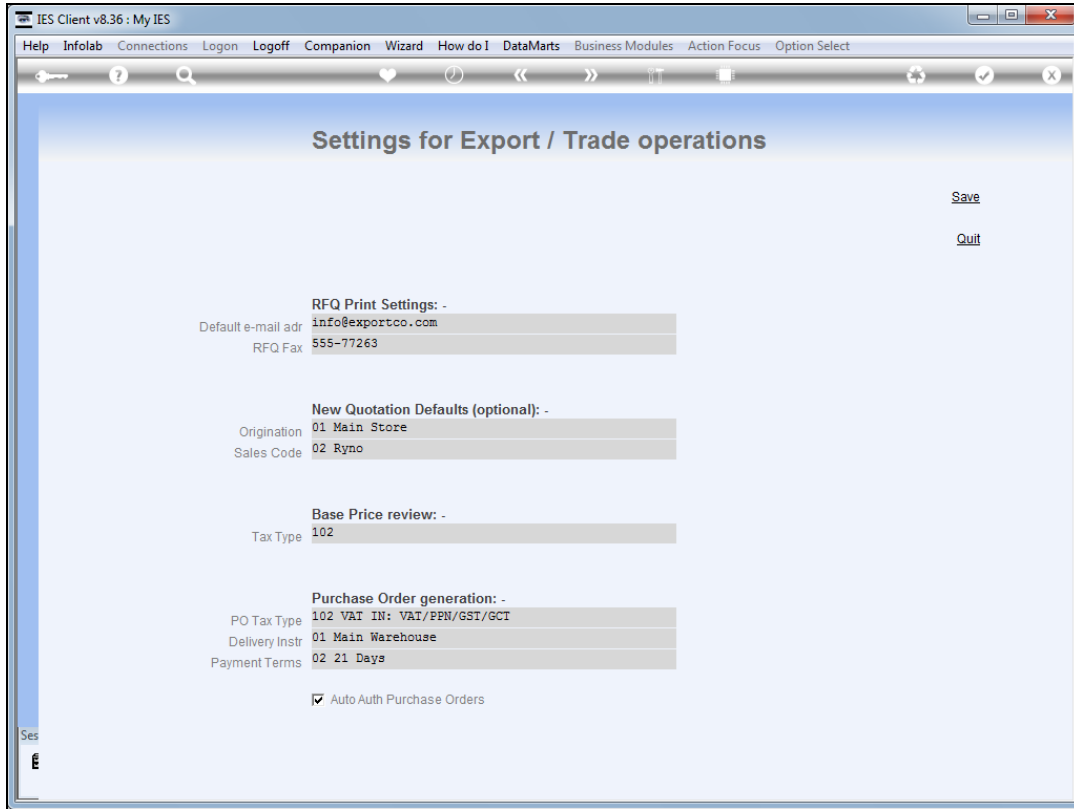


Slide 10
Slide notes:

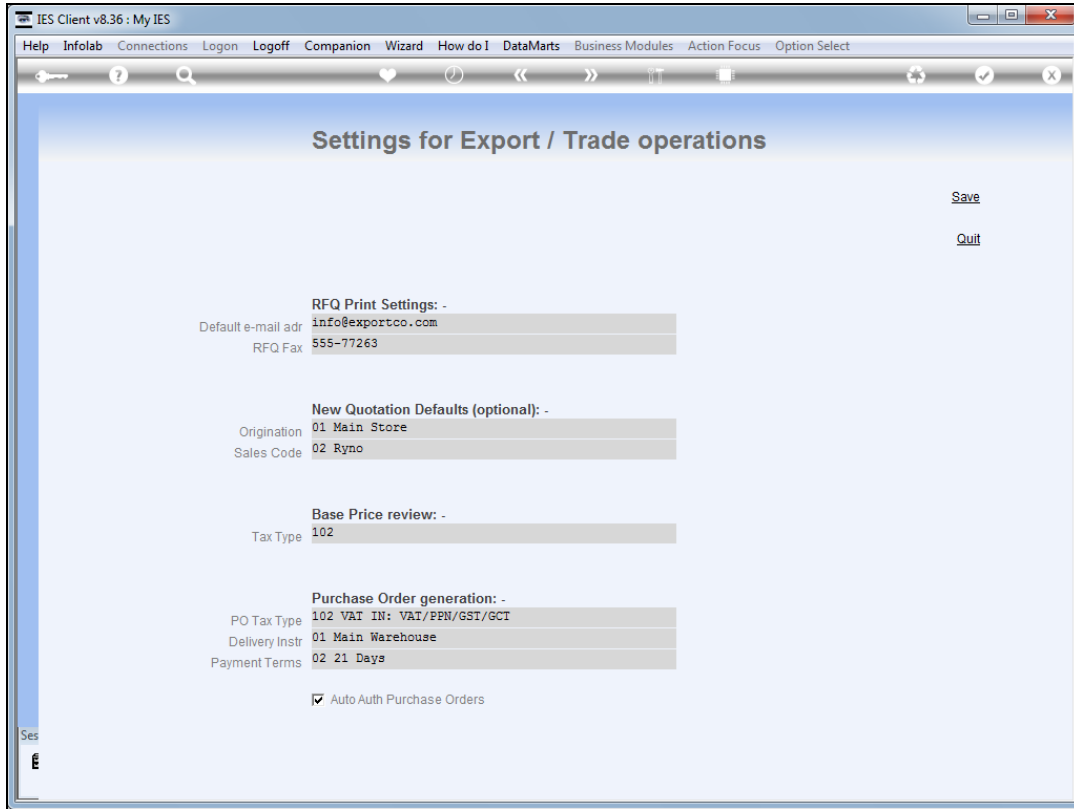


Slide 11

Slide notes: The base price review may use a Tax Type, and this is recommended for all cases where we may claim input tax on supplied goods. This parameter, even when defaulted, can also be re-selected on each Quotation, as needed.

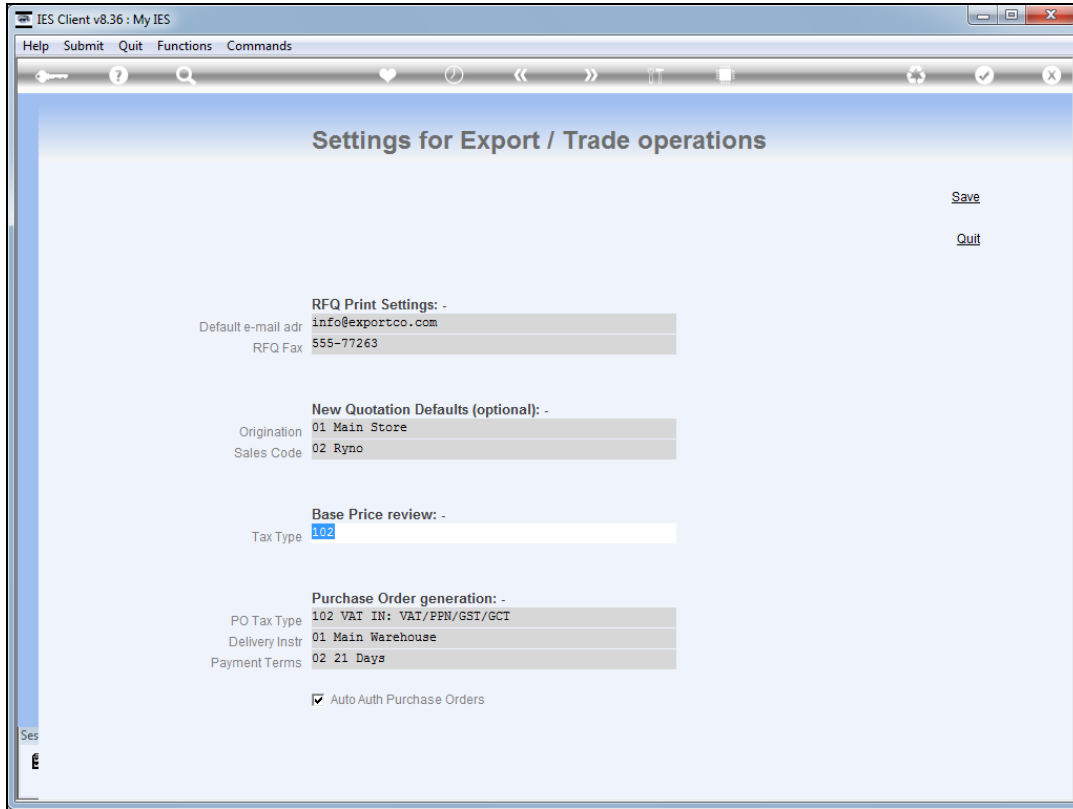


Slide 12
Slide notes:



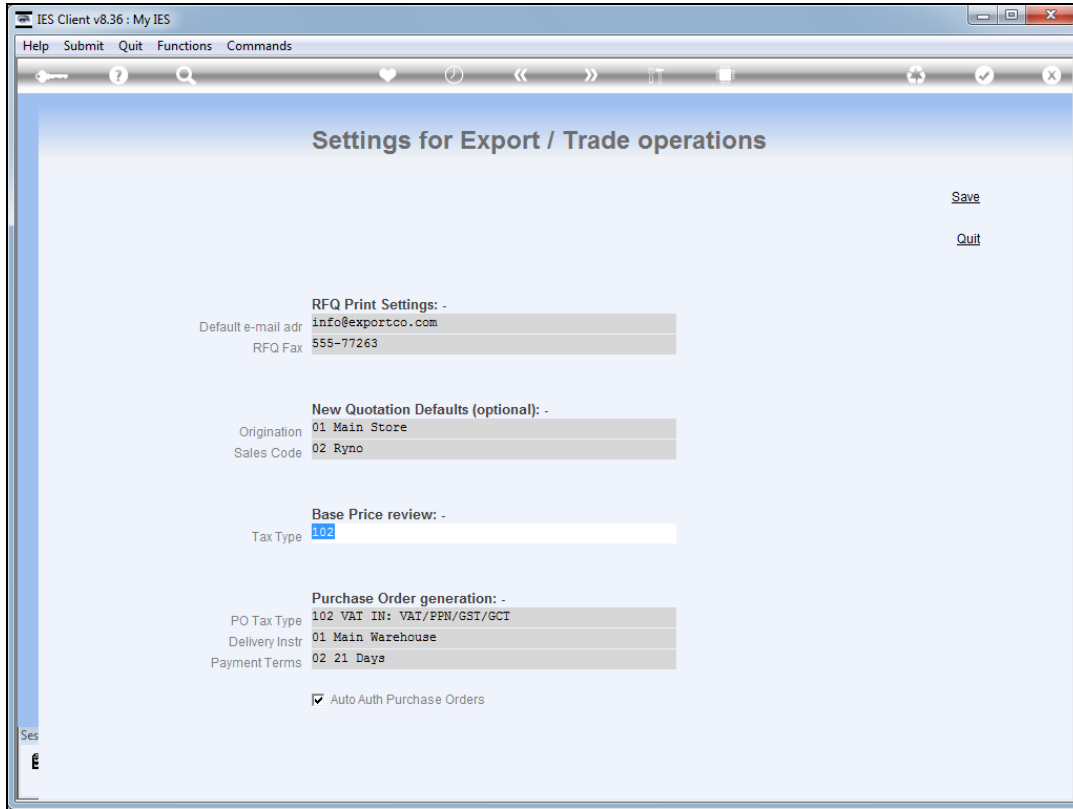
Slide 13

Slide notes: The PO Tax Type should be pre-selected here if the same Tax Type applies to all auto generated Purchase Orders. If not specified, then the Operator will be prompted for the Tax Type to use when generating Purchase Orders on a specific Quotation.

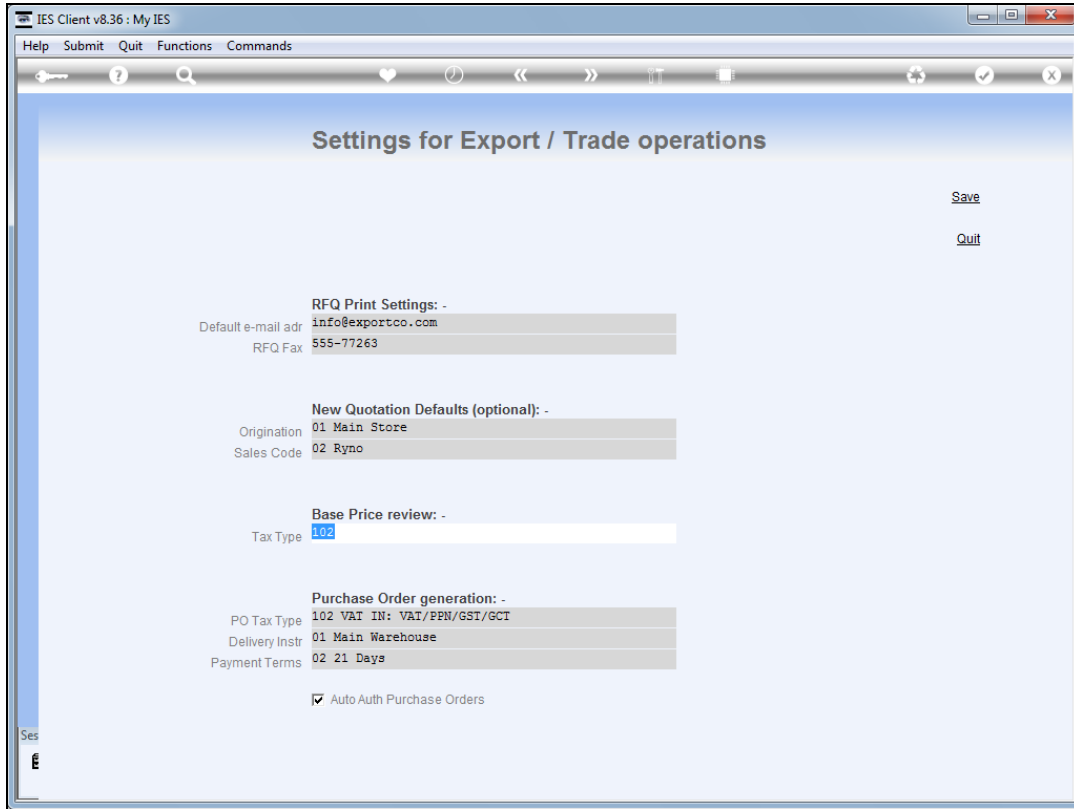


Slide 14

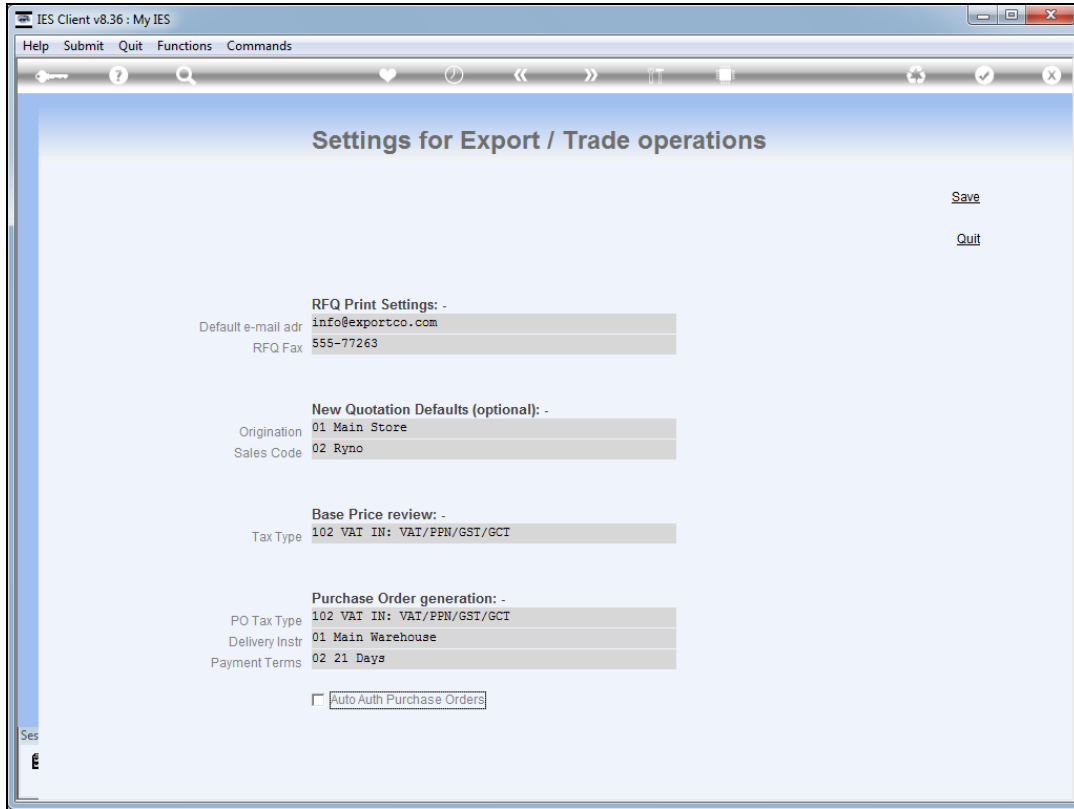
Slide notes: Delivery Instructions and Payments may also be pre-selected for inclusion on all auto generated Purchase Orders.



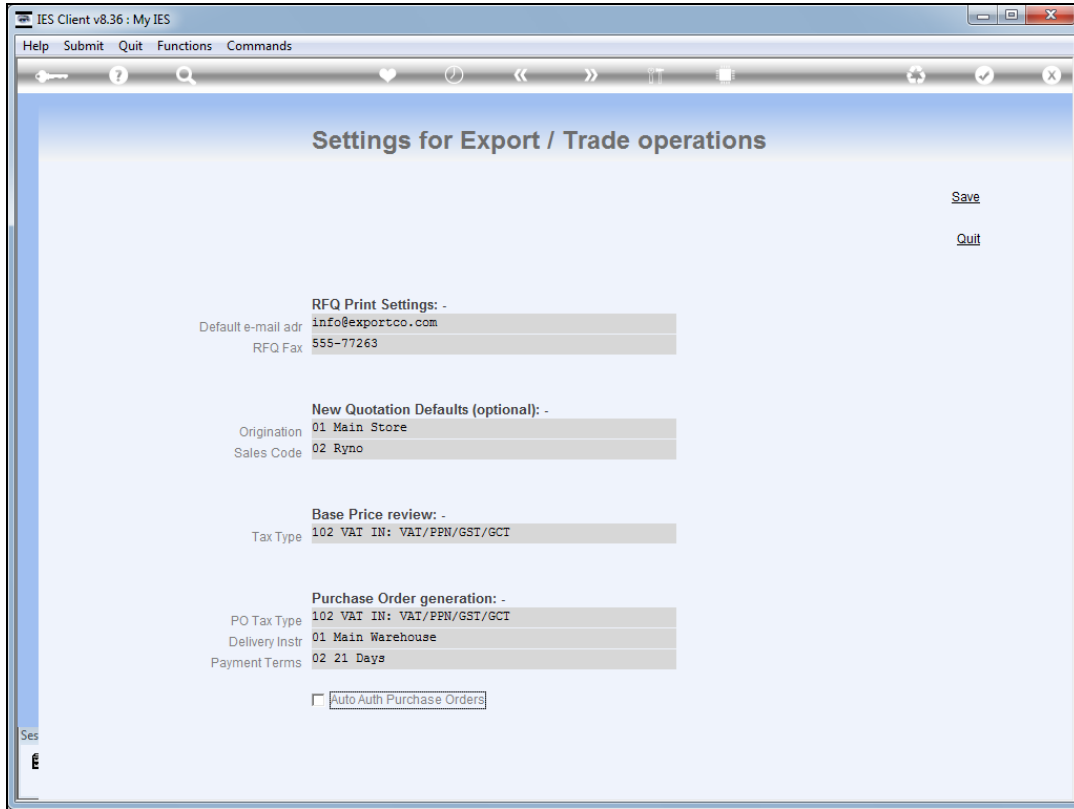
Slide 15
Slide notes:



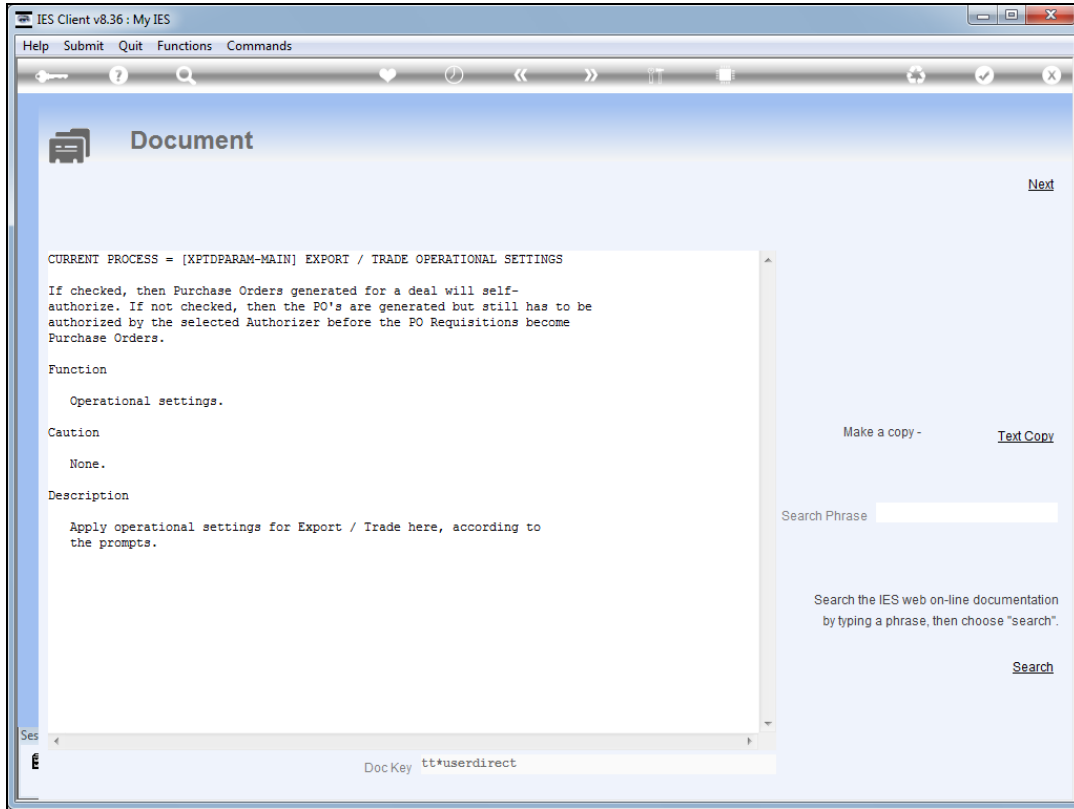
Slide 16
Slide notes:



Slide 17
Slide notes:

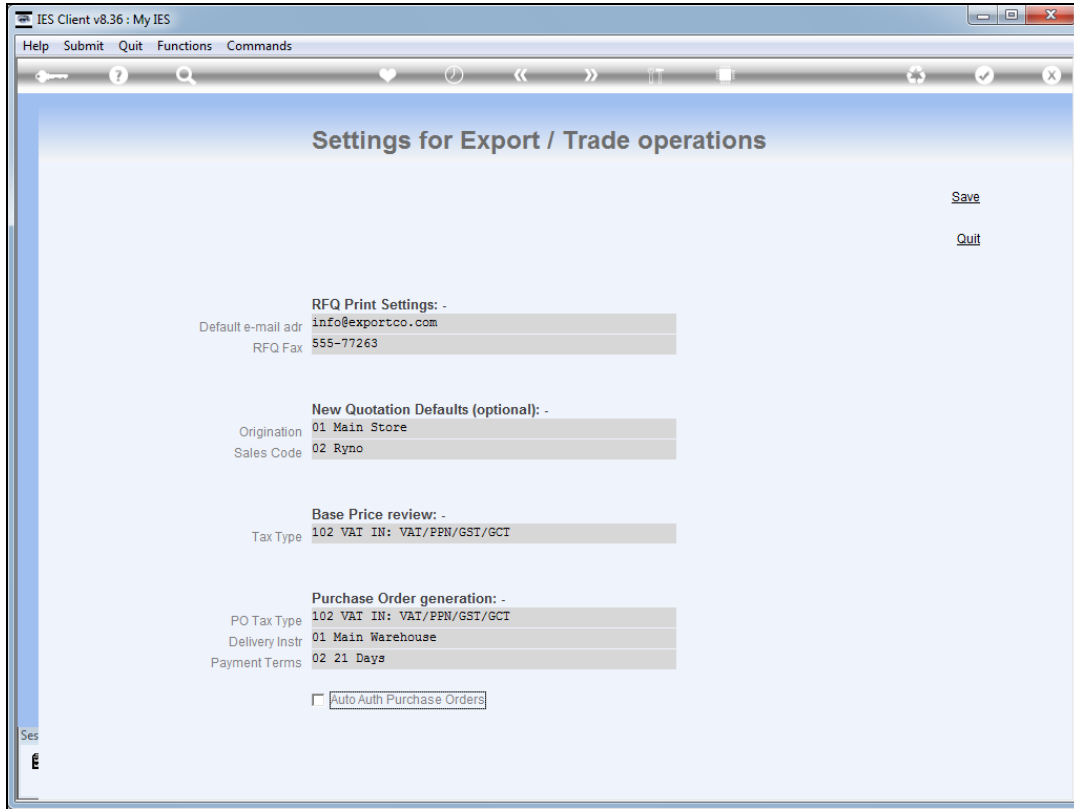


Slide 18
Slide notes:

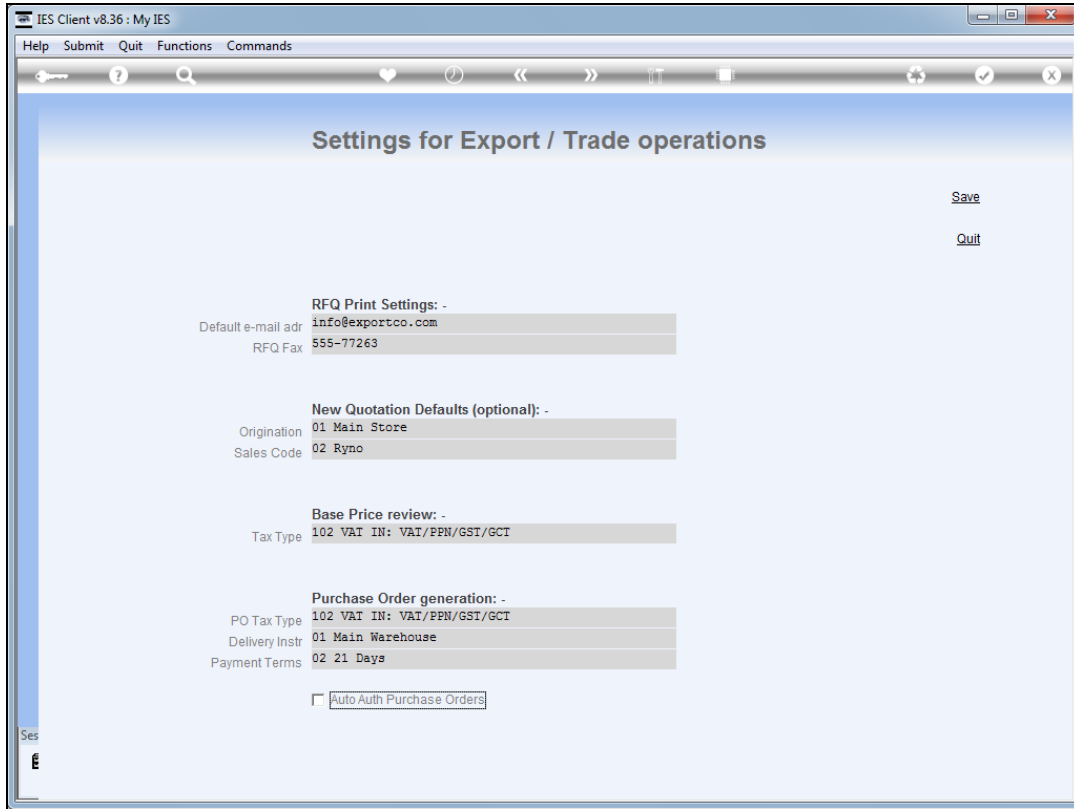


Slide 19

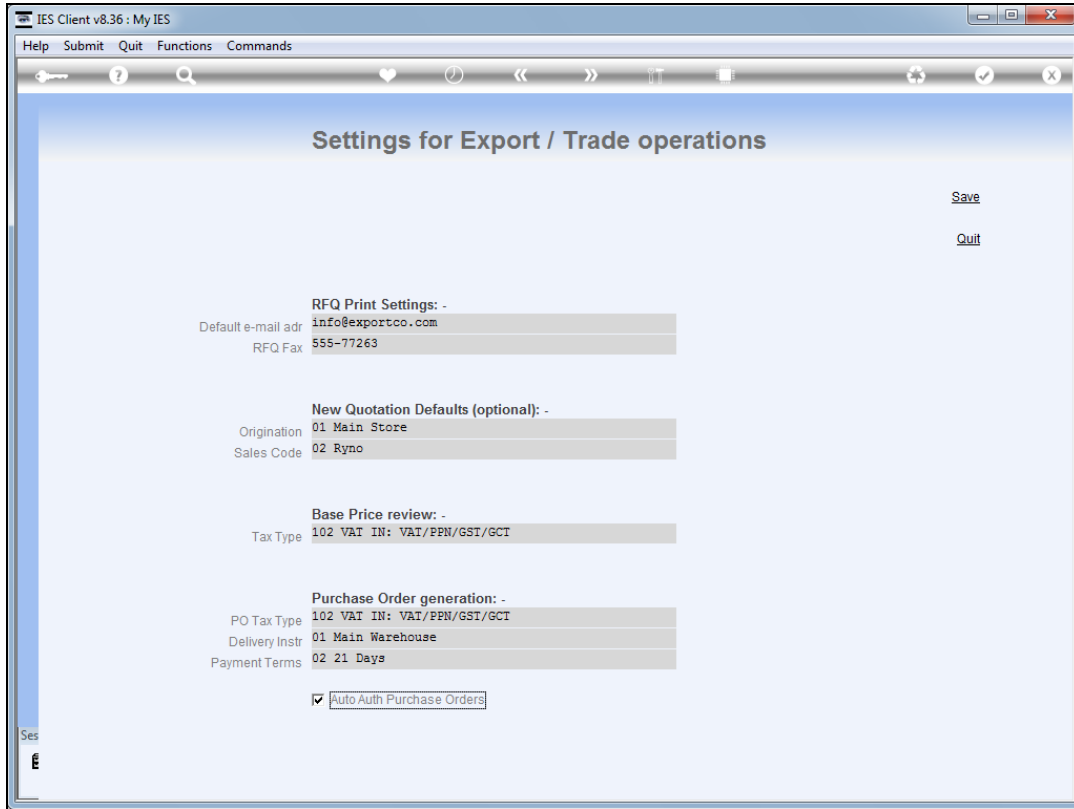
Slide notes: If Purchase Orders are set for automatic authorization, then all PO's are authorized at the same time as when generated. If we do not wish PO's to be automatically authorized, but rather authorized on the standard basis of a selected Authorizer, then we should not check this field.



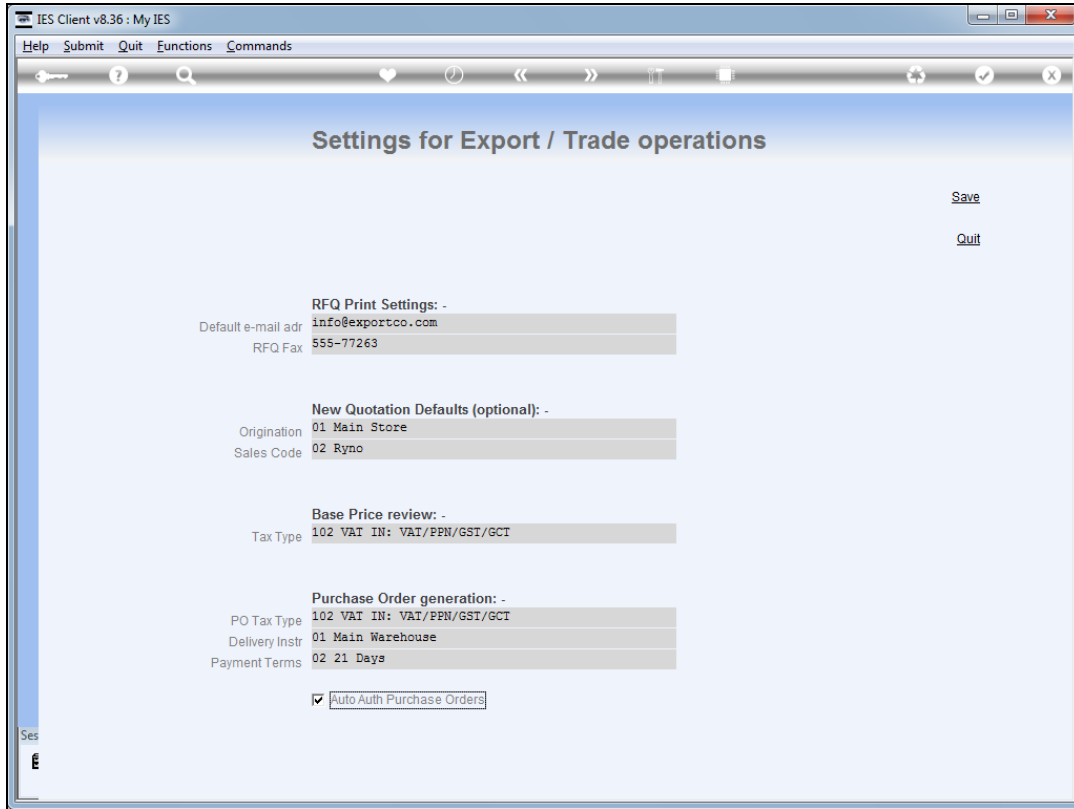
Slide 20
Slide notes:



Slide 21
Slide notes:



Slide 22
Slide notes:



Slide 23
Slide notes: