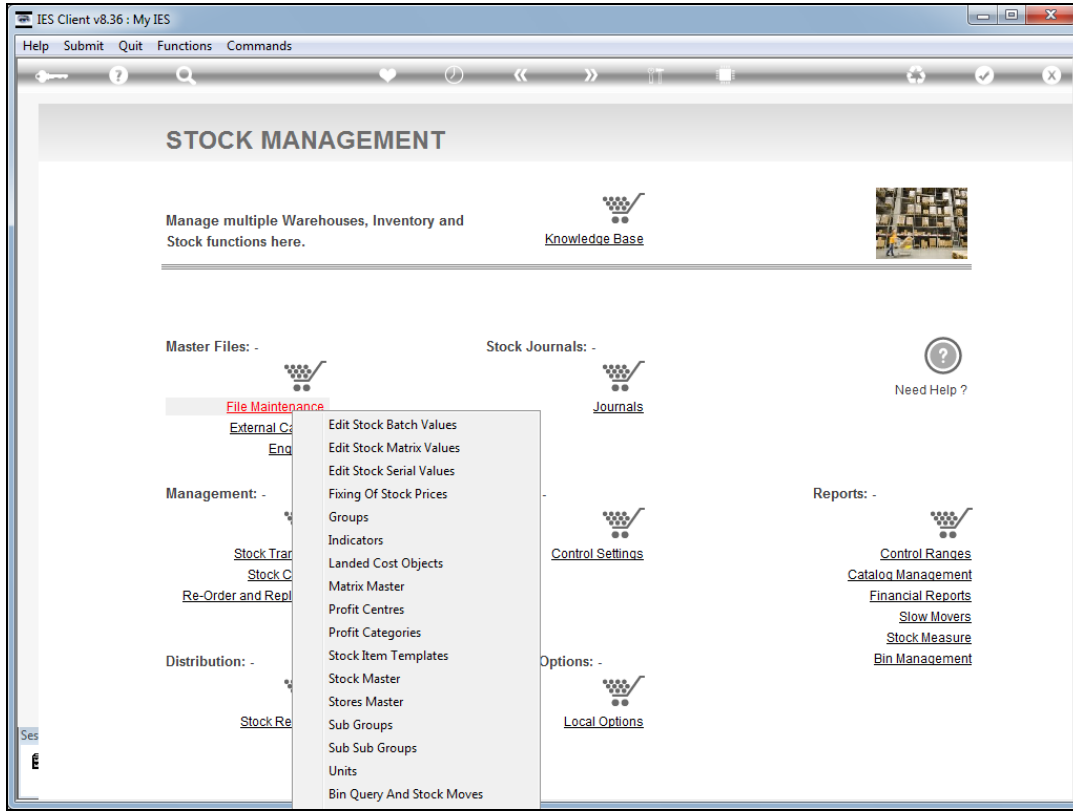


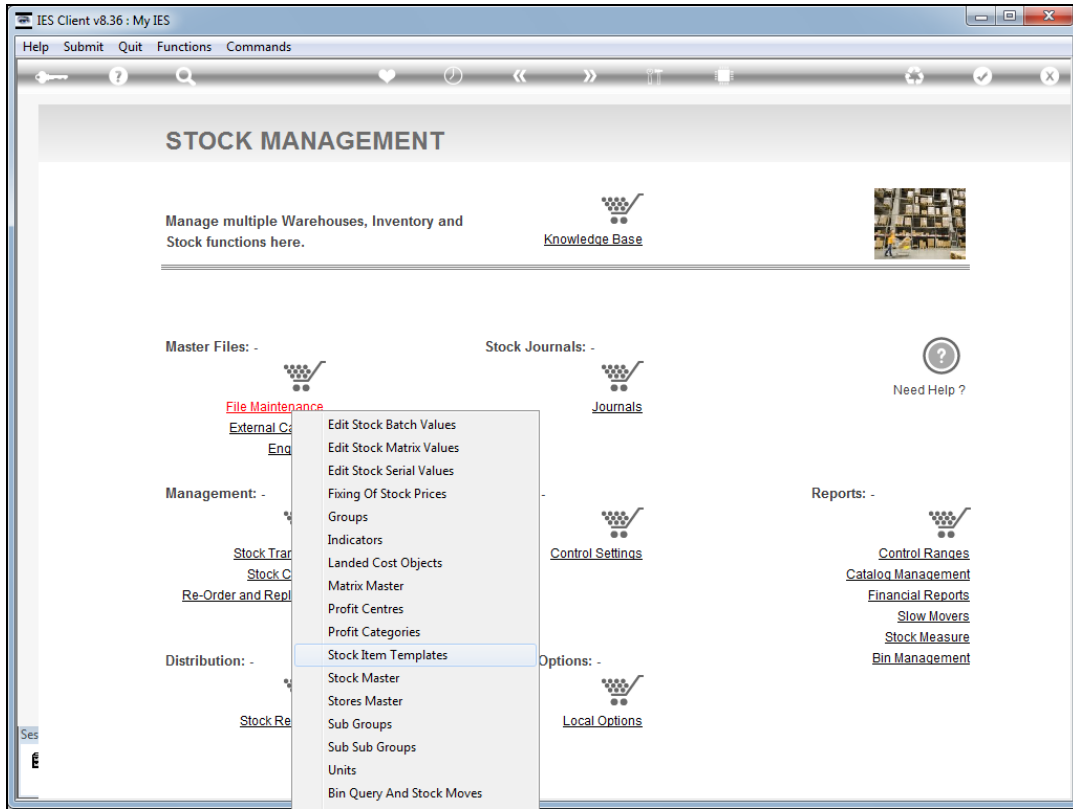
Slide 1

Slide notes: The Stock system is an underlying component used by Retail, and both are essential to the Export Trade workflow system.

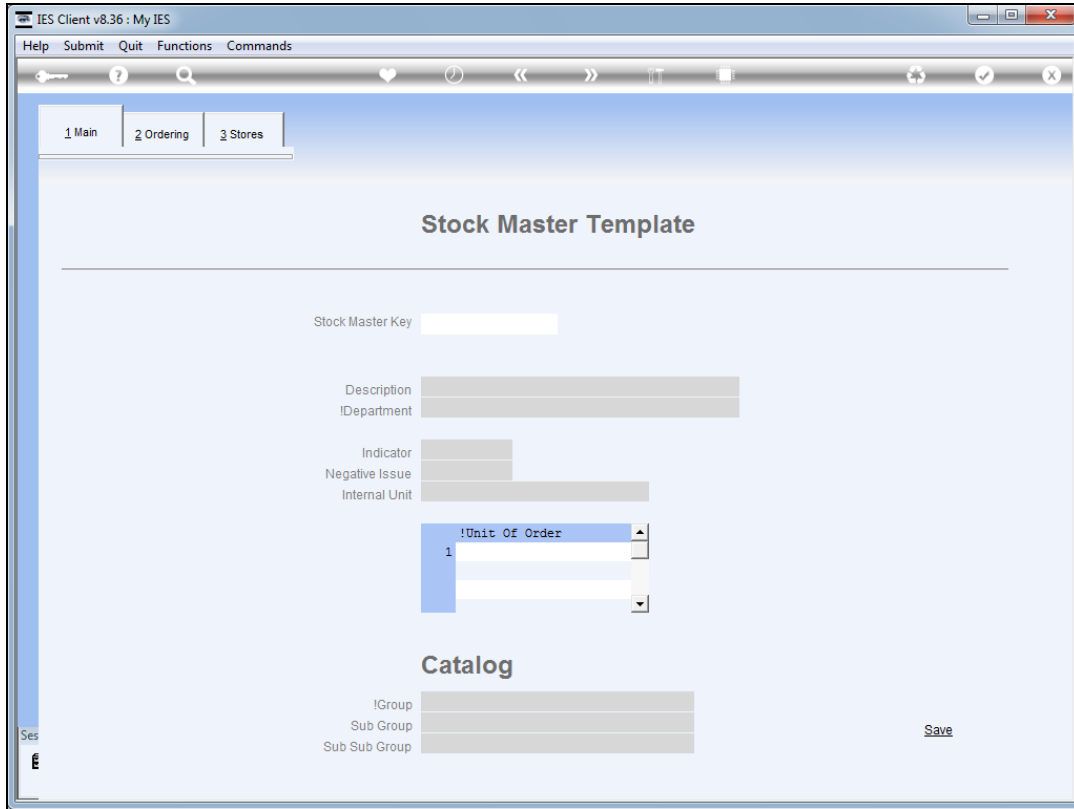


Slide 2

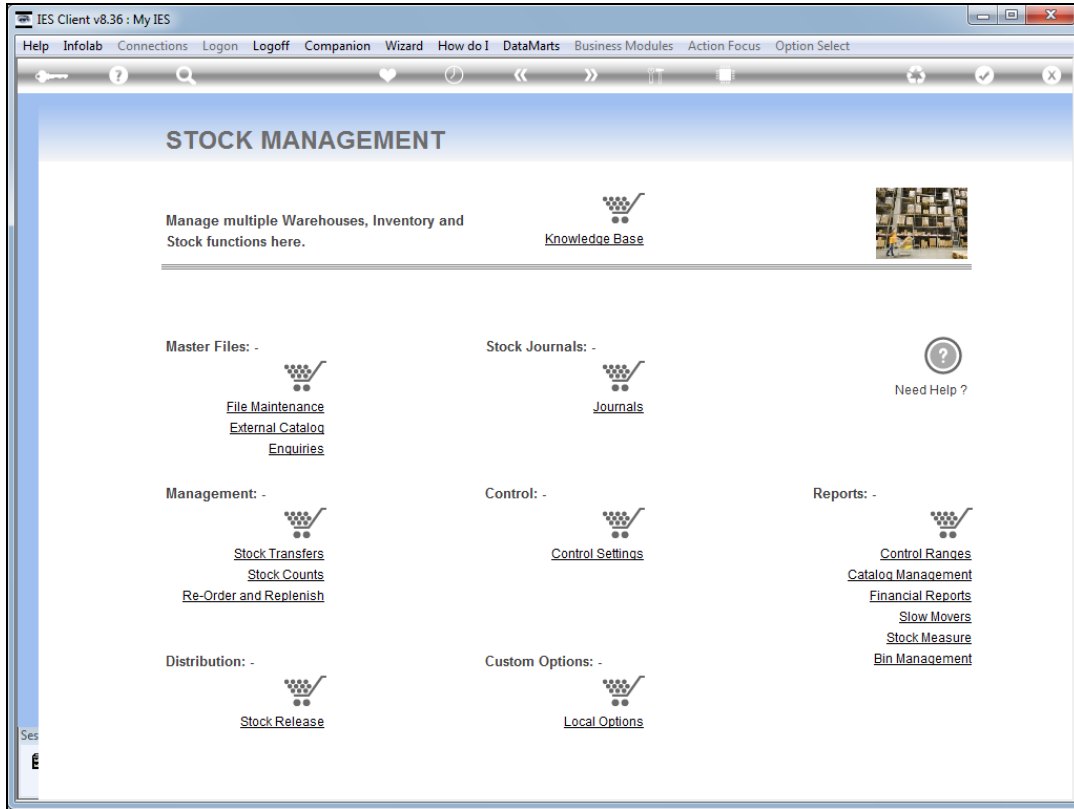
Slide notes: Therefore, a normal Stock set up has to be performed before we can use Export Trade workflow. Specifically, it is recommended that we establish 1 or more Stock Item Templates for "on the fly" creation of new Stock Items from Export Trade.



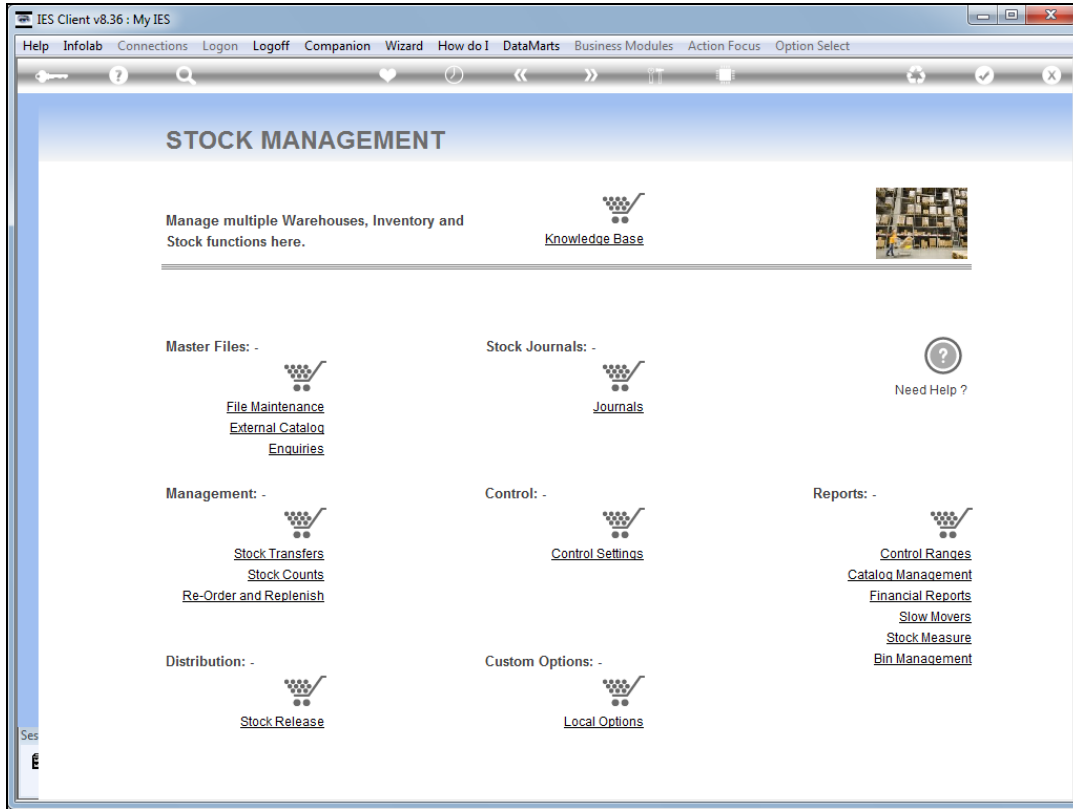
Slide 3
Slide notes:



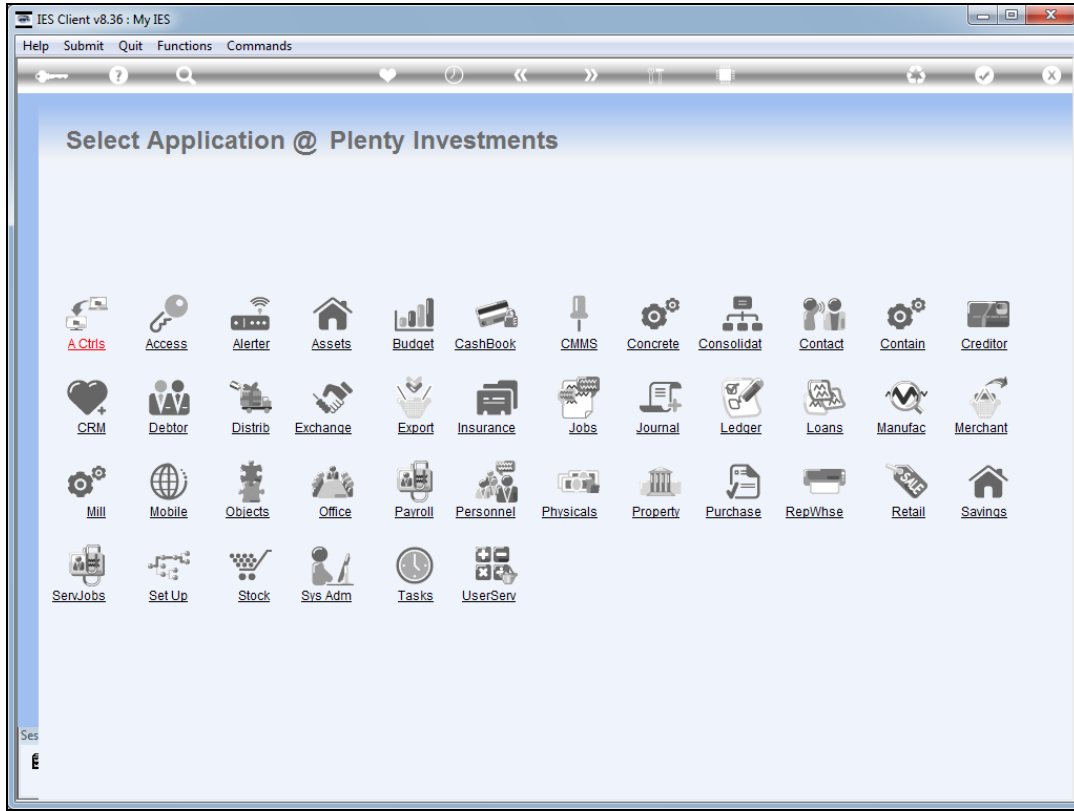
Slide 4
Slide notes:



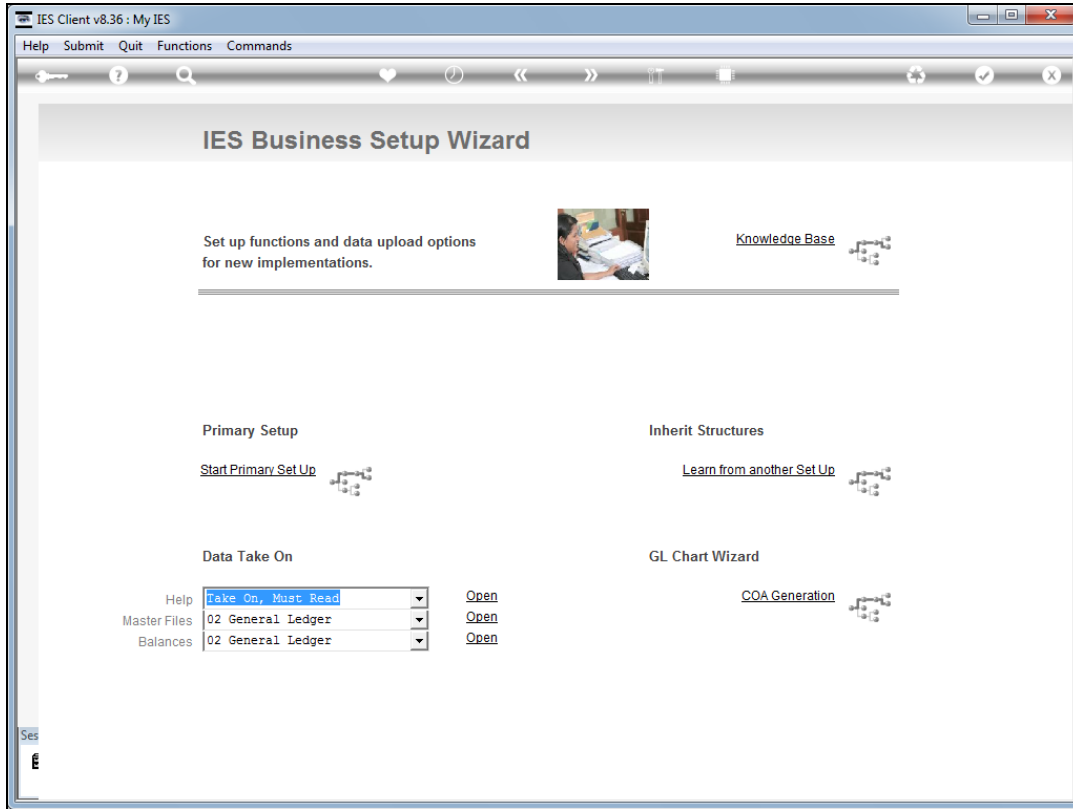
Slide 5
Slide notes:



Slide 6
Slide notes:



Slide 7
Slide notes:



Slide 8

Slide notes: At System Setup, we also have options for setting up the Stock system. This tutorial is only a pointer though, and we should use the normal Stock tutorials for all matters relating to the Stock system set up.