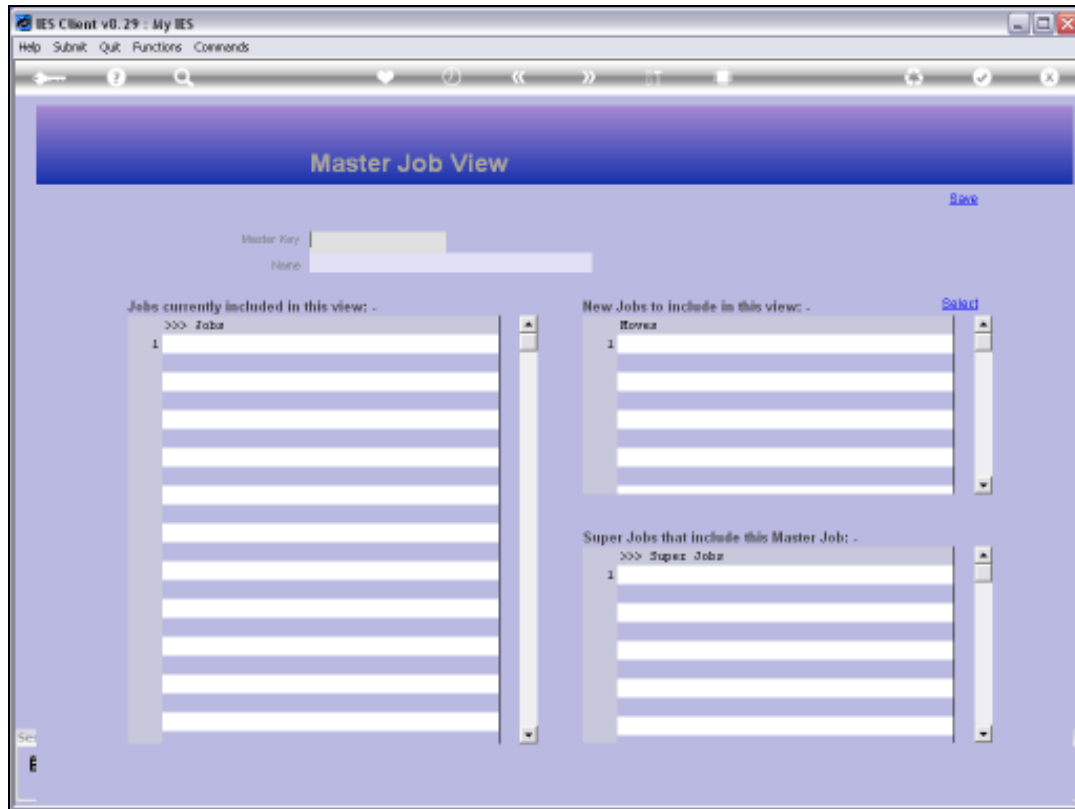




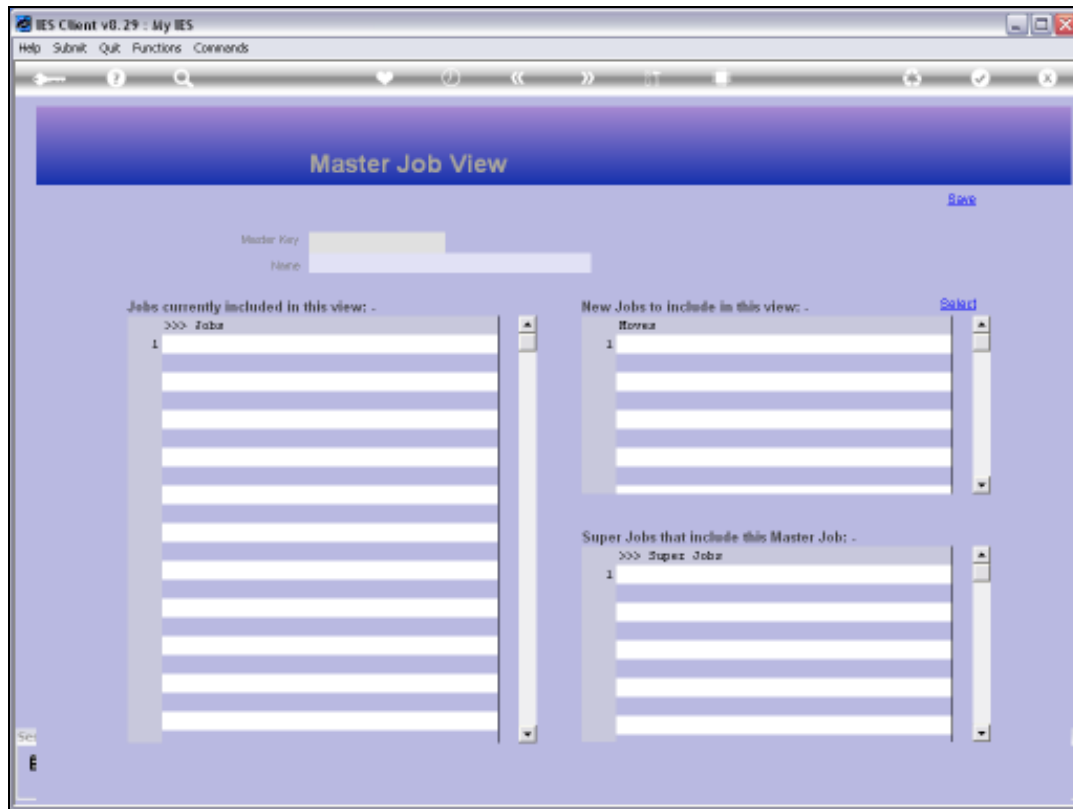
Slide 1

Slide notes: To define new Master Jobs and to maintain current Master Jobs, we use the option found at File Maintenance.



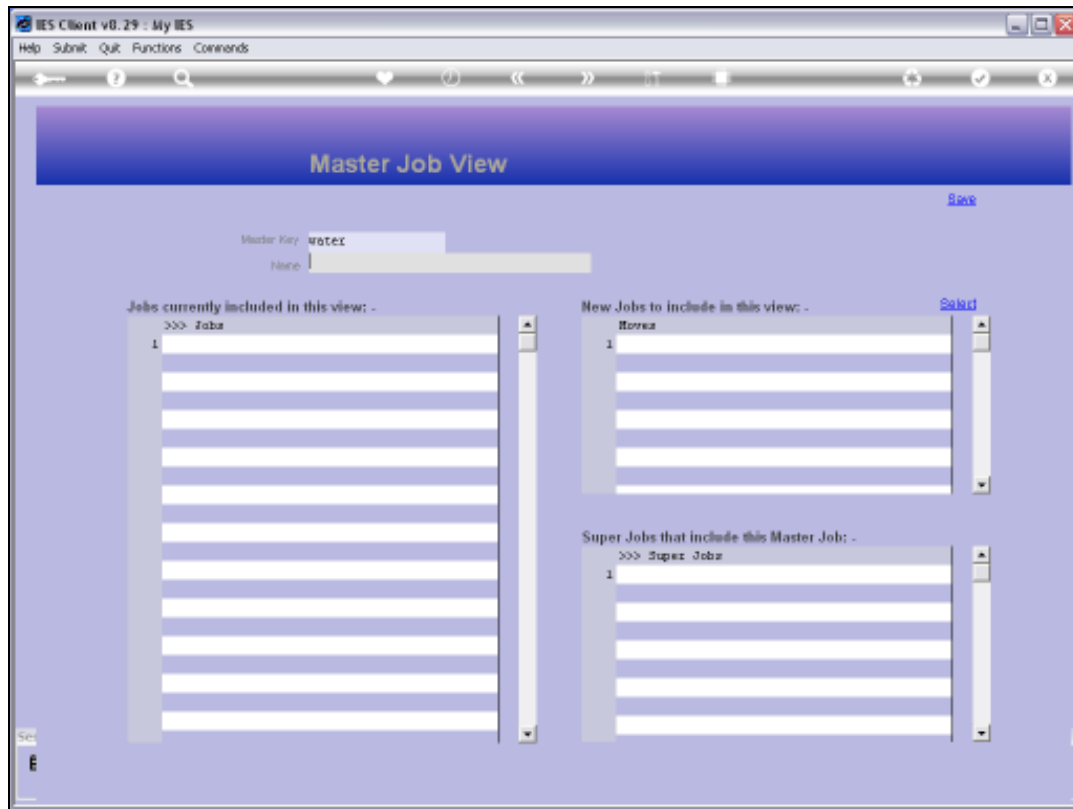
Slide 2

Slide notes: A Master Job is a collection of Jobs, usually 2 or more, and has the capability to report a consolidated view of the included Jobs.



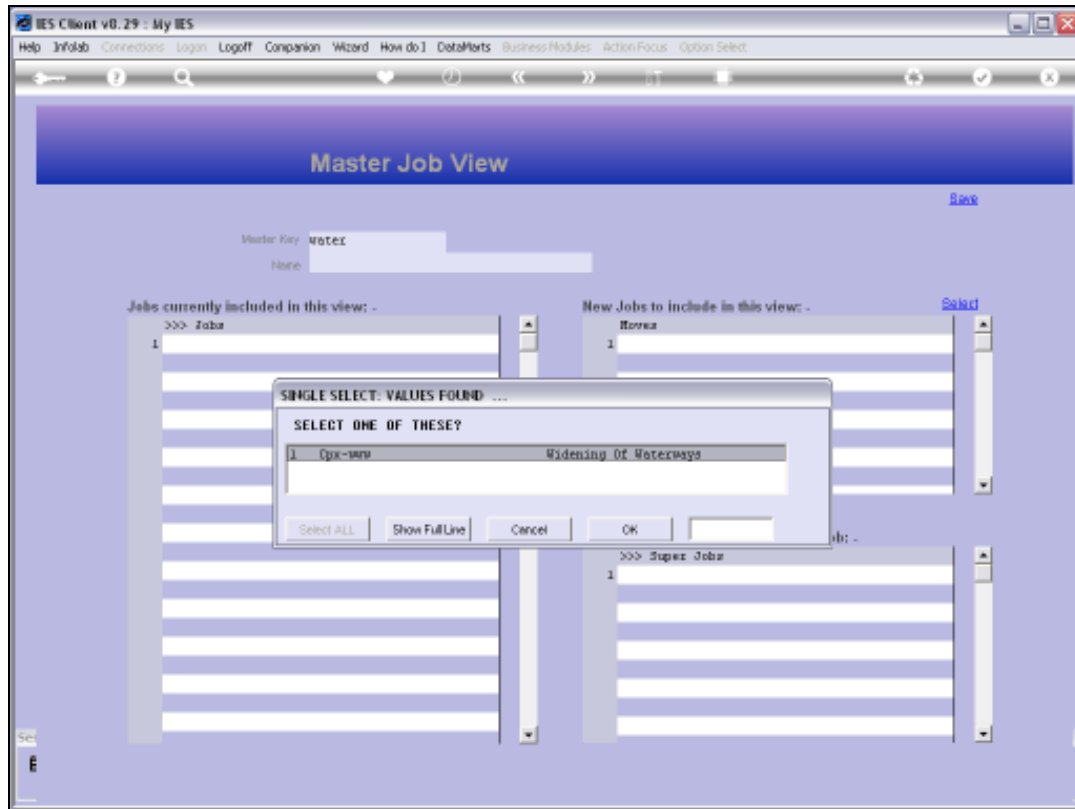
Slide 3

Slide notes:



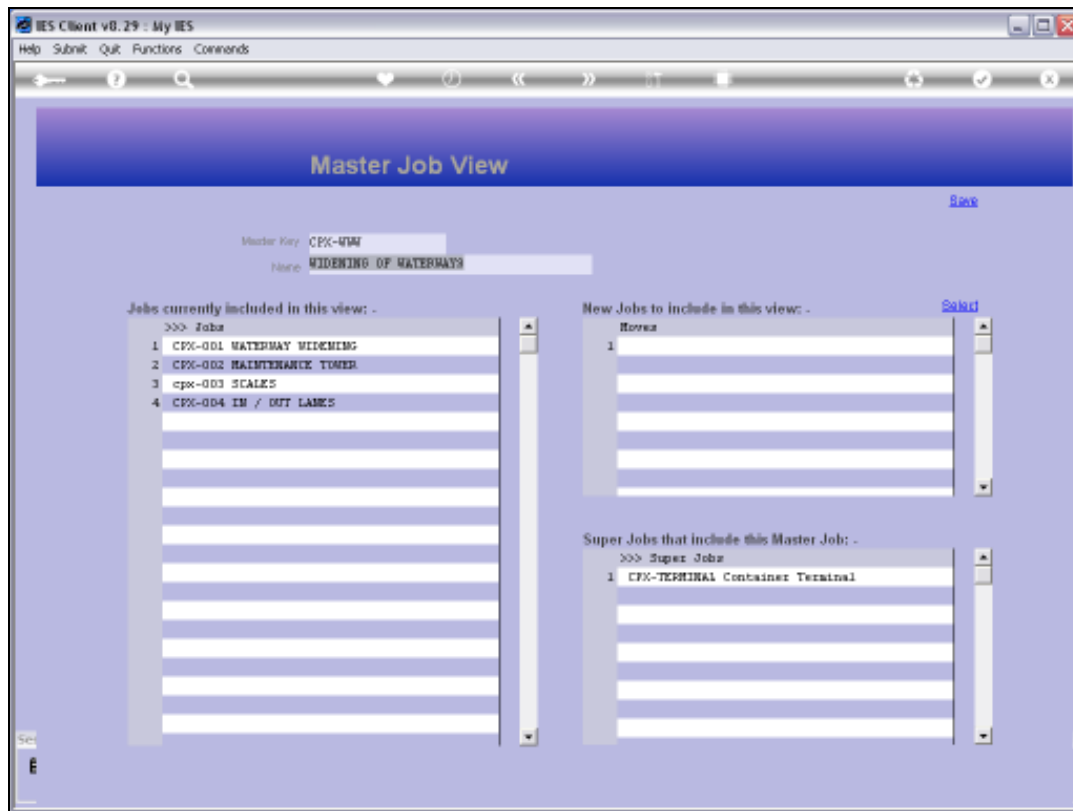
Slide 4

Slide notes:



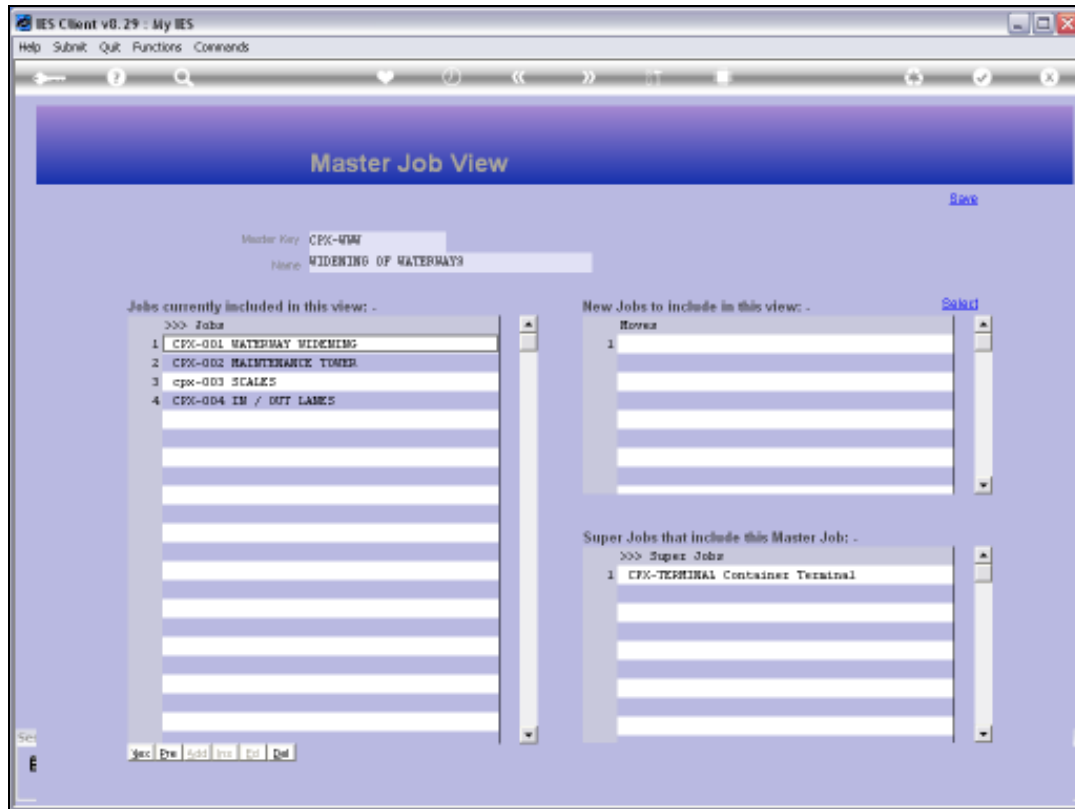
Slide 5

Slide notes:



Slide 6

Slide notes: It is easy to define a Master Job. We may assign the Key of our choice, and give the Master Job a Name. To include new Jobs in the Master Job, we can use the 'Select' function.



Slide 7

Slide notes:

IES Client v0.29 : My IES

Help Submit Quit Functions Commands

Please Choose the Data To Select -

The selection tips tell you what kind of selection rule is being applied ...

You may change any 'My Choice' value to prescribe which data should be selected ...

[Restore Defaults](#)

Selection Tip	My Choice
1 Jobcode Pattern	[1]
2 Description = >	[1]
3 Dept Code	[1]
4 Job Type Code = >	[1]
5 Report Group	[1]
6 Group No =	[1]

[New](#) [Pre](#) [Add](#) [Pre](#) [Del](#) [Del](#)

CHOOSE RECORD STATUS

☐ OPEN Records only

☐ CLOSED Records Only

☒ EITHER

[Next](#)

Slide 8

Slide notes:

IES Client v0.29 : My IES

Help Submit Quit Functions Commands

Please Choose the Data To Select -

The selection tips tell you what kind of selection rule is being applied ...

You may change any 'My Choice' value to prescribe which data should be selected ...

[Restore Defaults](#)

Selection Tip	My Choice
1 Jobcode Pattern	[]
2 Description = >	[]
3 Dept Code	[]
4 Job Type Code = >	[]
5 Report Group	[]
6 Group No =	[]

[New](#) [Pre](#) [Add](#) [Pre](#) [Edit](#) [Del](#)

CHOOSE RECORD STATUS

☐ OPEN Records only

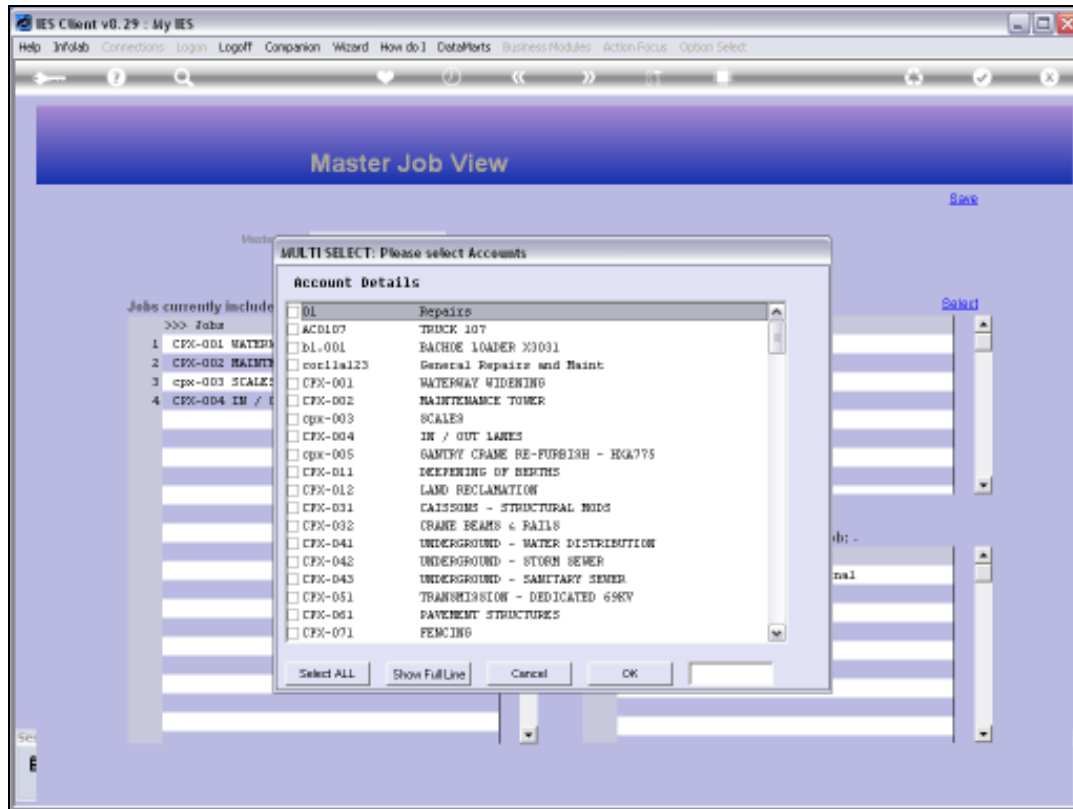
☐ CLOSED Records Only

☒ EITHER

[Next](#)

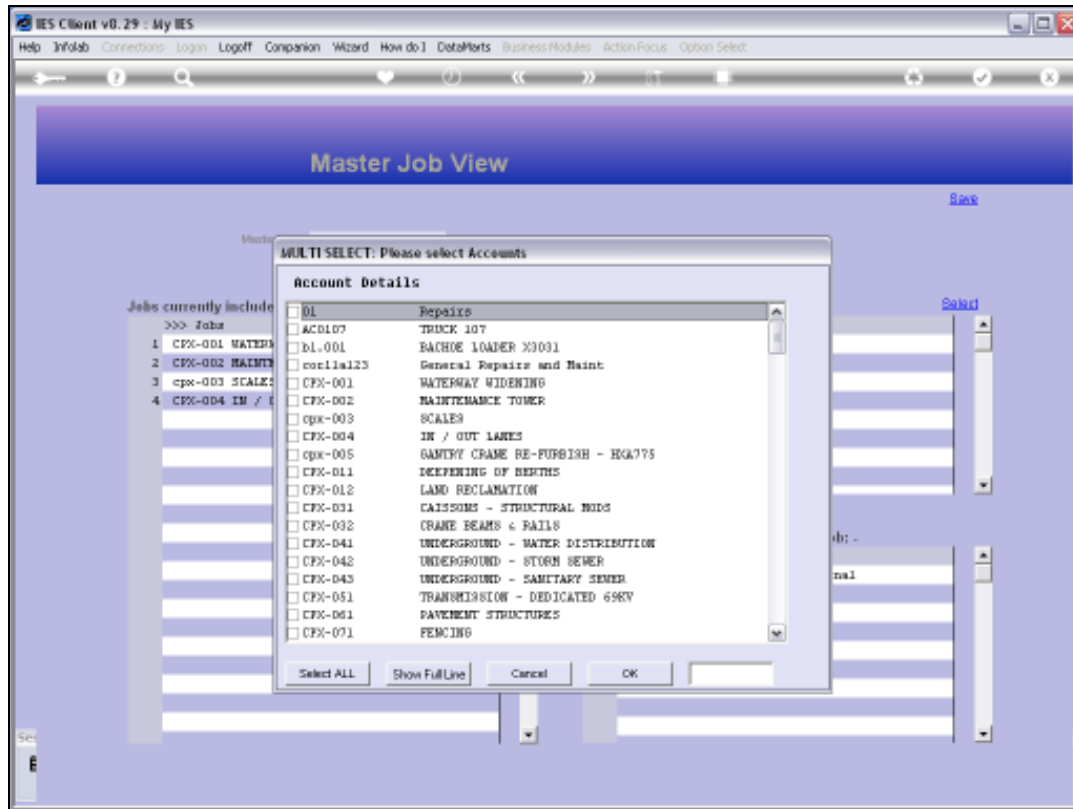
Slide 9

Slide notes:



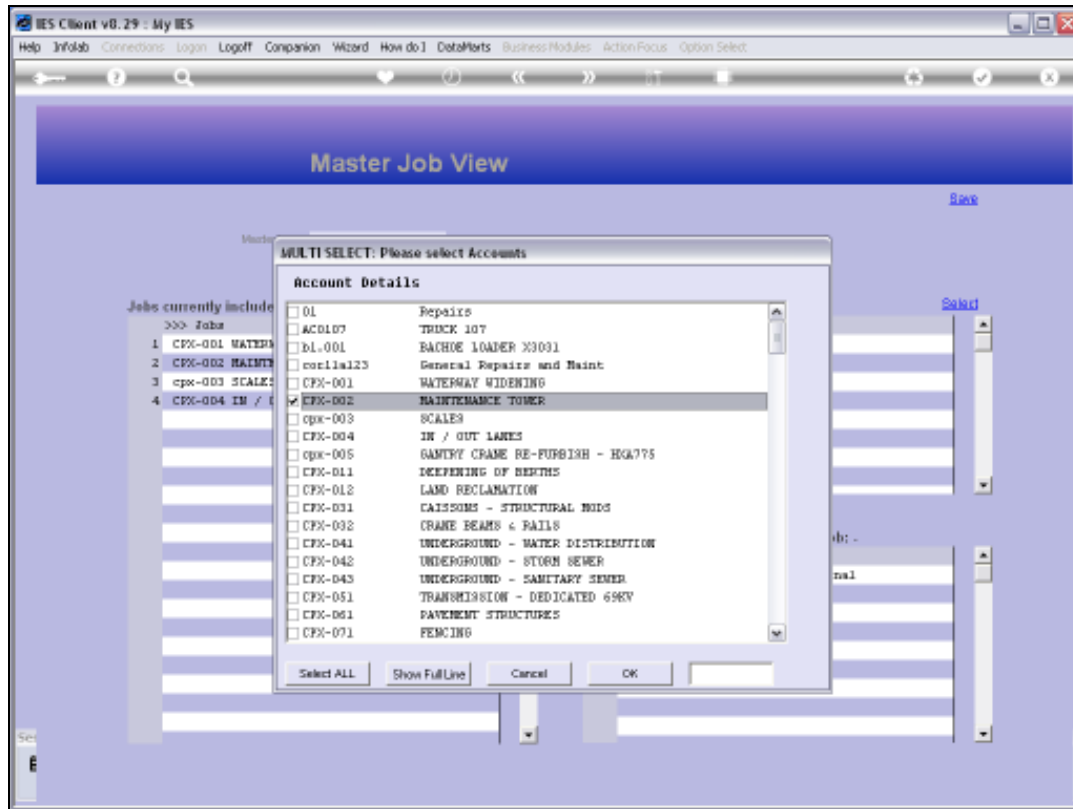
Slide 10

Slide notes:



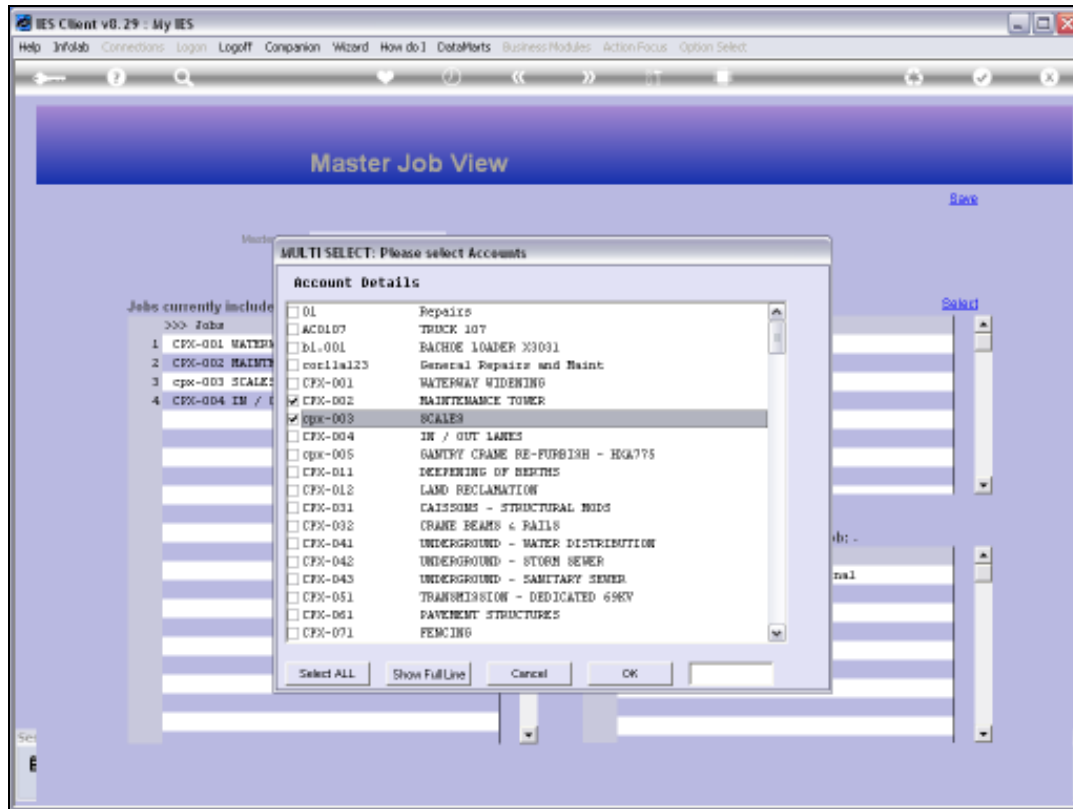
Slide 11

Slide notes:



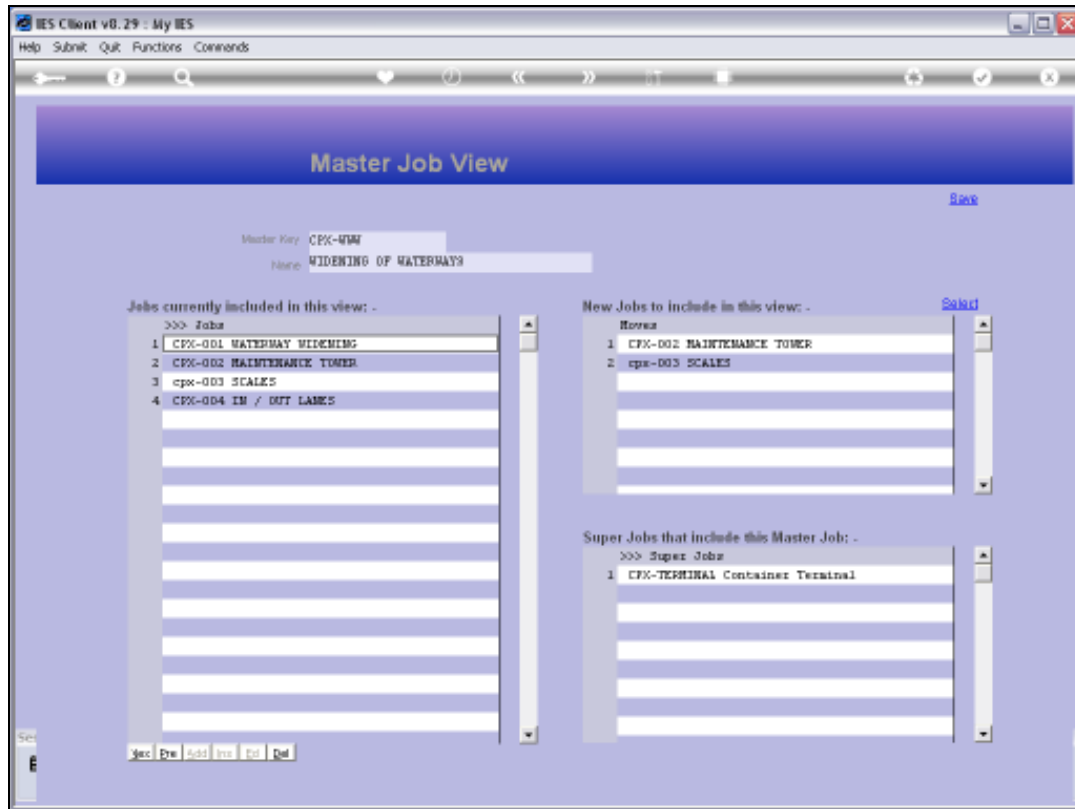
Slide 12

Slide notes:



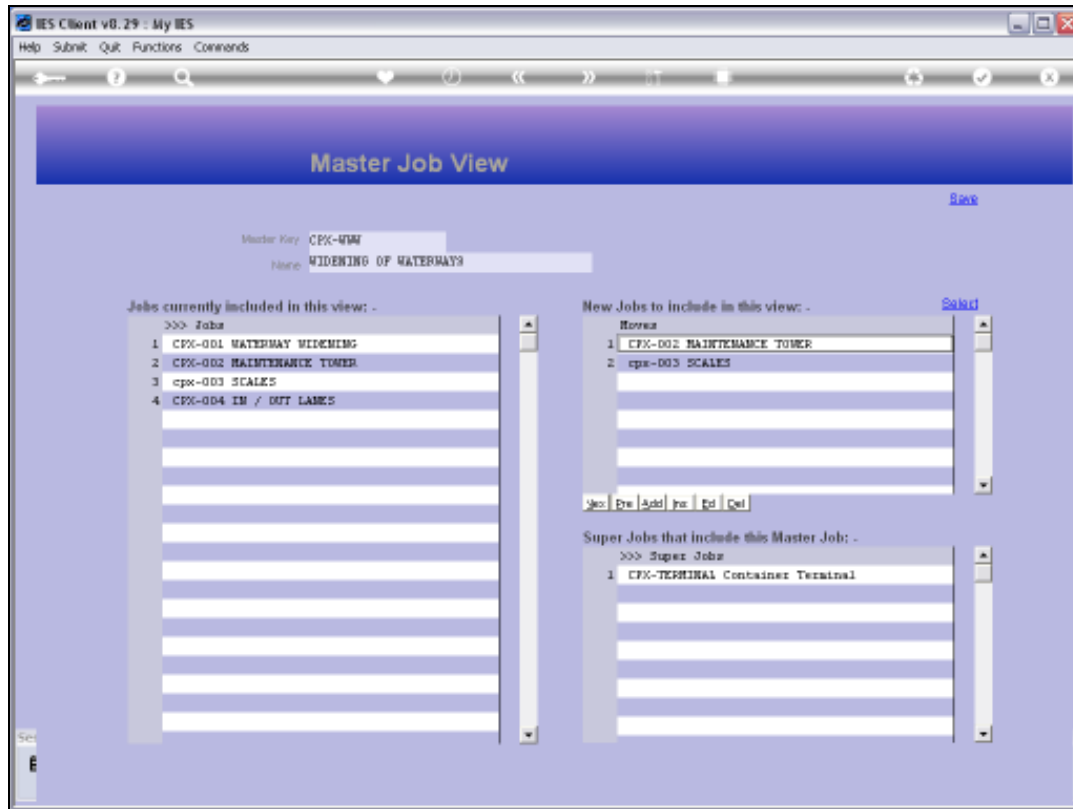
Slide 13

Slide notes:



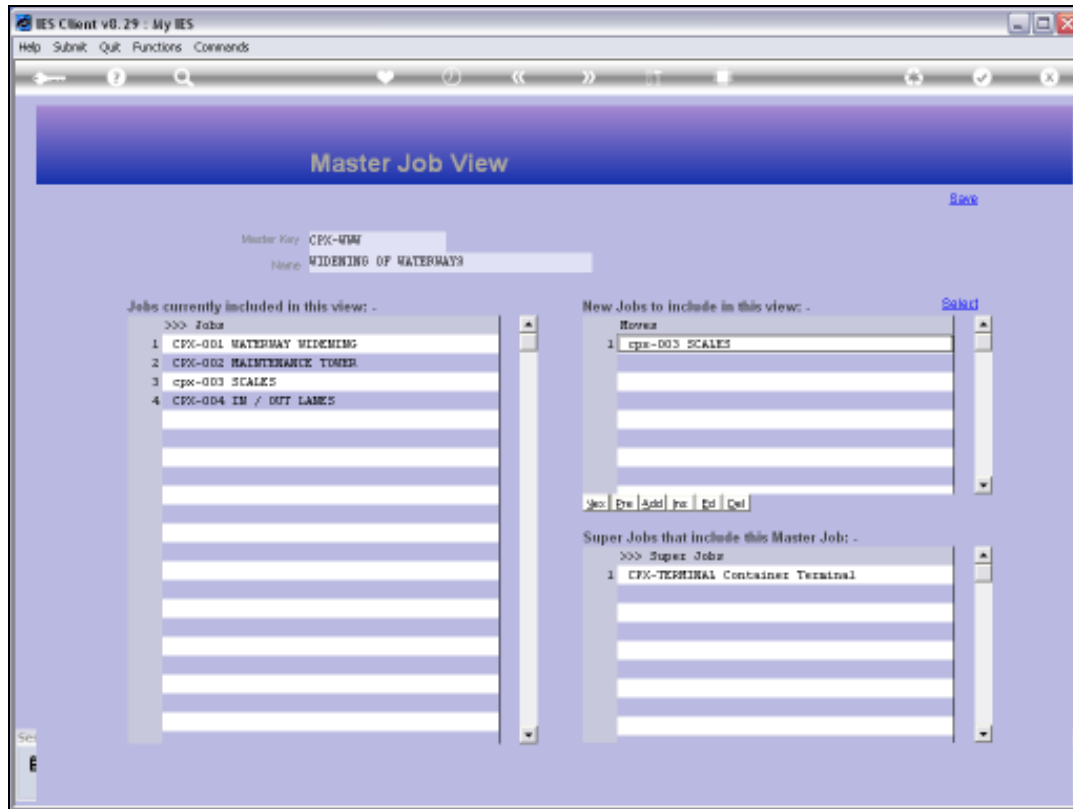
Slide 14

Slide notes: In fact, these 2 Jobs are already included, and the system will not duplicate them. We have only selected the Jobs to show how easily it is done.



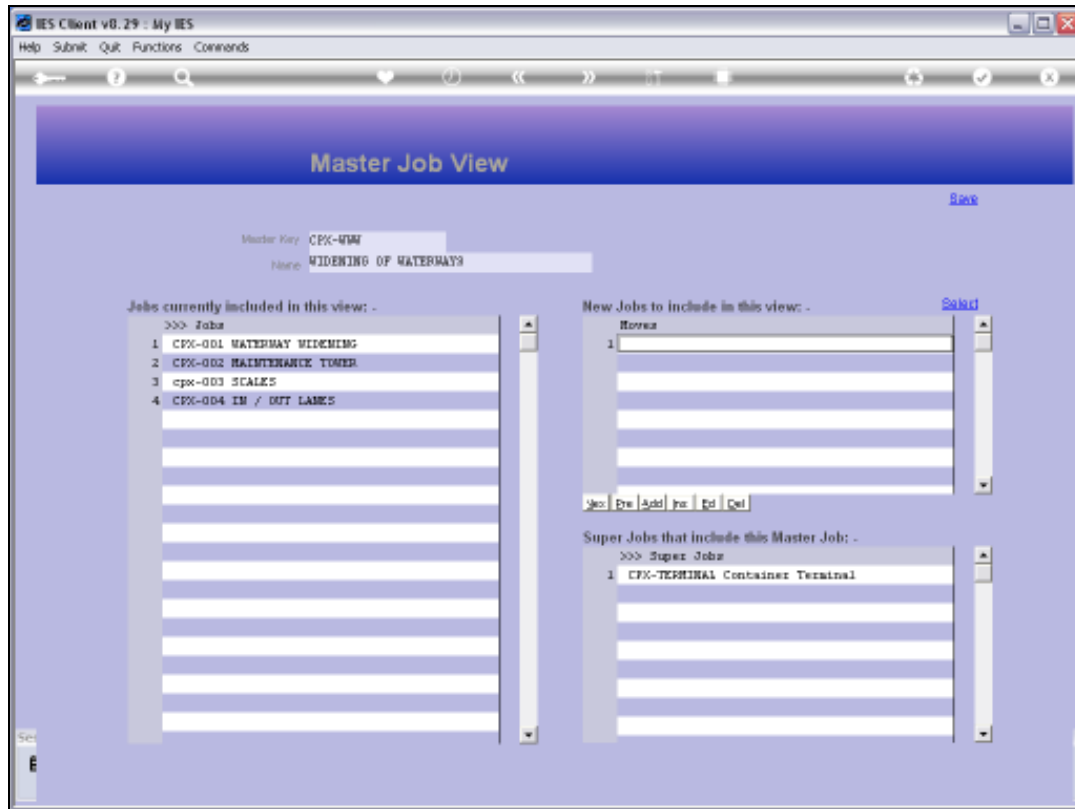
Slide 15

Slide notes:



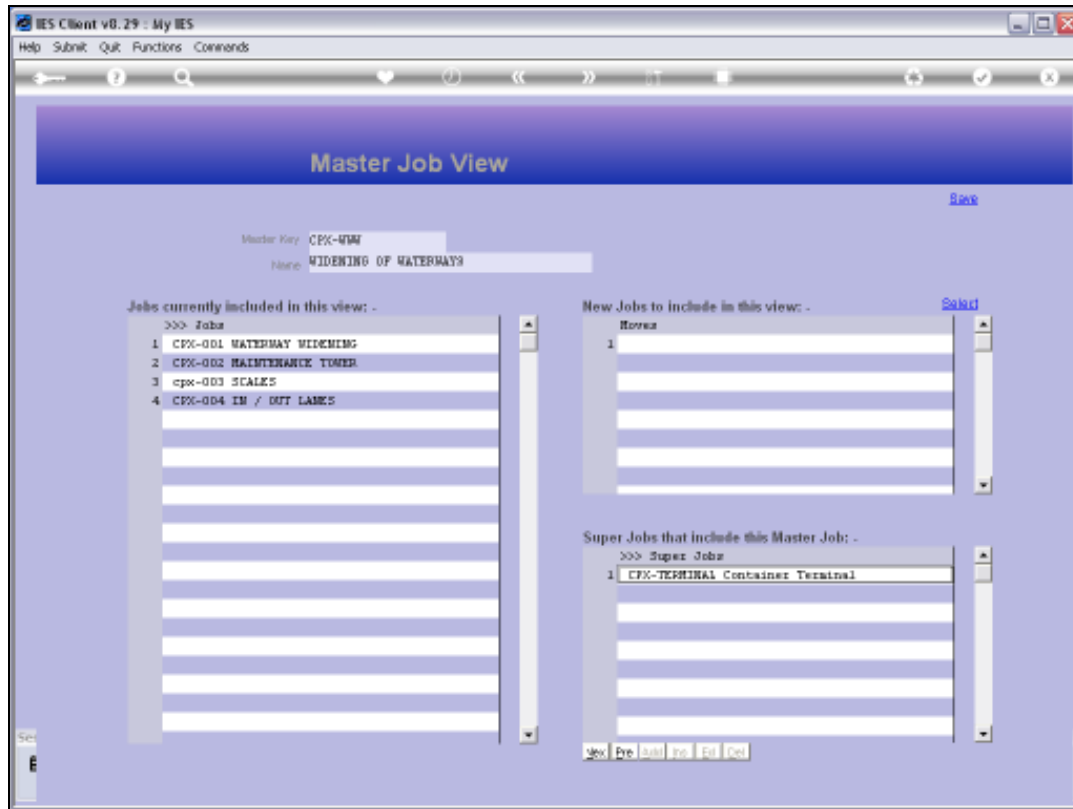
Slide 16

Slide notes:



Slide 17

Slide notes: A Master Job may also be included at 1 or more Super Jobs, and the system will show the Super Jobs where this Master Job is included.



Slide 18

Slide notes: To perform the update after making changes or defining a new Master Job, we choose SAVE.



Slide 19

Slide notes: