

Slide 1

Slide notes:



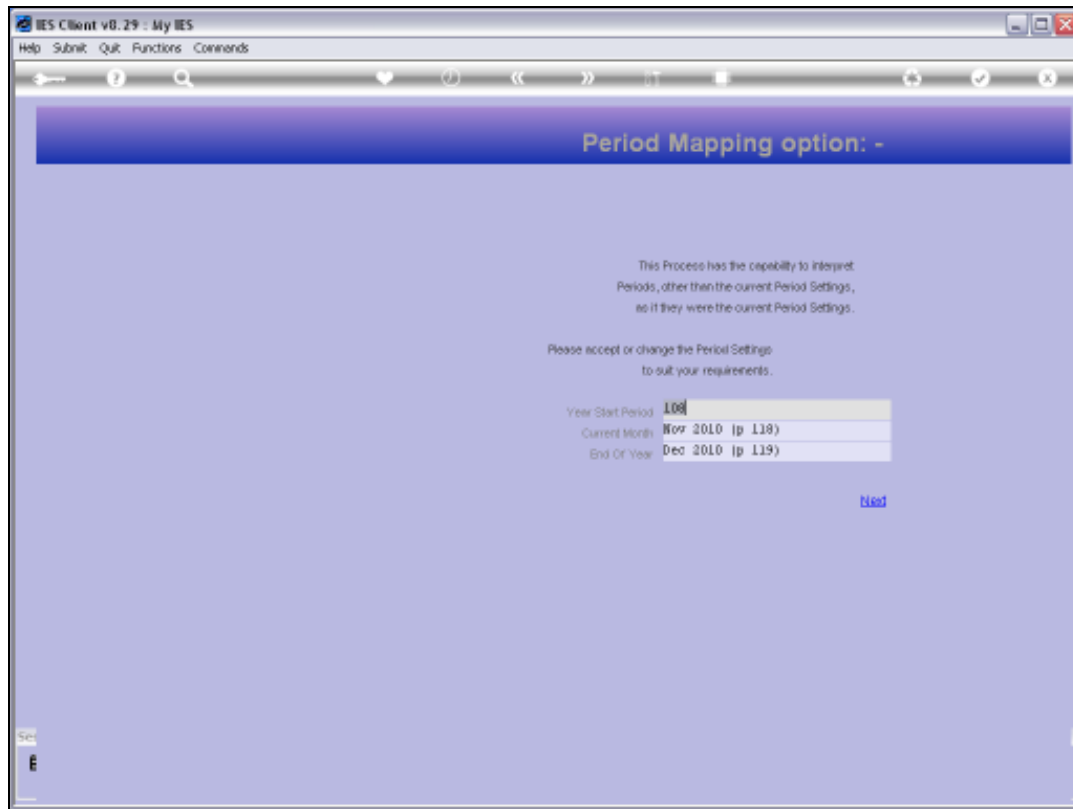
Slide 2

Slide notes:



Slide 3

Slide notes: The Current Balance Reports are offered as Current Balances, Budget Balances and Cost Type Balances.



Slide 4

Slide notes: Dynamic Period mapping is always offered so that we may choose the Period Range to perform at.

IES Client v8.29 : My IES

Help Submit Quit Functions Commands

IES REPORTS AND QUERIES: - User Instructions

NAME: Job Master Current Balances

1: CHOOSE VERSION [Versions](#)

Report Version: System Version: Jobmaster Balances

2: CHOOSE SETTINGS

Format: report

Output: FILE

File Type: text text file

Format: 04: Infolab

Report Header: Jobmaster Balances

3: CHOOSE DATA SELECTOR [Change Selector](#)

Choose Data II data selector

Data Selector: 104: From the RANGE FROM - TO

4: TO E-MAIL THE RESULTS: [Print](#) normal

☒ Dispatch By E-Mail [Send Email](#)

Mail To: Job Master Current Balances

Message Body: report by mail

5: ADAPT DATA SELECTION (if prompts are present) [How to adapt MY CHOICE](#) [Factory Defaults](#)

Selection Tip	My Choice
1: Jobcode >= <	0
2: Jobcode <= <	21
3: Report Group = <	11

6: Record Select: ☐ OPEN Records only ☐ CLOSED Records Only ☒ OTHER

7: CHOOSE NEXT [Next](#)

Slide 5

Slide notes: And we may also exercise our preferred Selection Criteria by choosing a preferred Data Selector.

Q1565936165A.TXT - Notepad

File Edit Format View Help

10:02:45 14 NOV 2010 page 4

Jobmaster Balances. Jan 2010 - Nov 2010

Key	Description.....	Ordered	Committed	This Month
VER1951	KILUN 2000, KQG301	0.00	0.00	0.00
VER1952	KILUN 2000, JH6152	0.00	0.00	0.00
VER1953	KILUN 2000, KQG309	0.00	0.00	0.00
VER1954	KILUN 2000, WVS222	0.00	0.00	0.00
VER1955	KILUN 2000, WVS213	0.00	0.00	0.00
VER1956	KILUN 2000, KLL122	0.00	0.00	0.00
VER1957	KILUN 2000, KLL199	0.00	0.00	0.00
VER1958	KILUN 2000, KQG663	0.00	0.00	502.00
VER1959	KILUN 2000, ST9323	0.00	0.00	0.00
VER1960	KILUN 2000, ST9323	0.00	0.00	0.00
VER1961	KILUN 2000, DC6101	0.00	0.00	120.00
VER1962	KILUN 2000, DC6494	0.00	0.00	0.00
VER1963	KILUN 2000, CD6201	0.00	0.00	0.00
VER1964	KILUN 2000, LHM500	0.00	0.00	0.00
VER1965	KILUN 2000, 000393	0.00	0.00	0.00
VER1966	KILUN 2000, KQG396	0.00	0.00	0.00
VER1967	KILUN 2000, A39989	0.00	0.00	0.00
VER1968	KILUN 2000, ARB544	0.00	0.00	0.00
VER1969	KILUN 2000, KQG323	0.00	0.00	0.00
VER1970	KILUN 2000, J37529	0.00	0.00	0.00
VER1901	HANDA 1600, AAR397	0.00	0.00	0.00
VER1902	HANDA 1600, F00192	0.00	0.00	0.00
VER1903	CHEVRY 1400, D60232	0.00	0.00	0.00
VER1904	HANDA 1600, BHM444	0.00	0.00	0.00
VER1905	HANDA 1600, D0624	0.00	0.00	0.00
		0.00	0.00	622.00
us001	General Repairs and Maint.	0.00	0.00	0.00
		0.00	0.00	0.00
00P5075	TOYOTA HILUX	0.00	0.00	0.00
00P5000	TOYOTA HILUX	0.00	0.00	0.00
		0.00	0.00	0.00

Slide 6

Slide notes: Current Balances show Purchase Order totals for Ordered and Received Items, followed by Current Month Movement and Year to Date balance.

Slide 7
Slide notes:



Slide 8

Slide notes:

Q1565936501A.TXT - Notepad				
File Edit Format View Help				
proj00	Project 02	0.00	0.00	0.00
proj02	Project 02	0.00	0.00	0.00
proj01	Project 01	0.00	0.00	0.00
plant01	Plant Item 01	0.00	0.00	0.00
		0.00	0.00	0.00
Job Budget Balances Jan 2010 - Nov 2010				
Job Key.....	Description.....	Actual	Budget	Variance
Type Key				
0000000	TOYOTA HILUX	0.00	0.00	0.00
0000000	TOYOTA HILUX	0.00	0.00	0.00
VER1905	HARDA 1600, D00624	0.00	0.00	0.00
VER1904	HARDA 1600, D00444	0.00	0.00	0.00
VER1902	CHERRY 1400, D00323	0.00	0.00	0.00
VER1902	HARDA 1600, D00192	0.00	0.00	0.00
VER1901	HARDA 1600, A00207	0.00	0.00	0.00
VER1270	HILUX 2000, J13520	0.00	0.00	0.00
VER1269	HILUX 2000, D00222	0.00	0.00	0.00
VER1268	HILUX 2000, A00544	0.00	0.00	0.00
VER1267	HILUX 2000, A00888	0.00	0.00	0.00
VER1266	HILUX 2000, D00506	0.00	0.00	0.00
VER1265	HILUX 2000, D00292	0.00	0.00	0.00
VER1264	HILUX 2000, D00500	0.00	0.00	0.00
VER1262	HILUX 2000, D00201	0.00	0.00	0.00
VER1262	HILUX 2000, D00424	0.00	0.00	0.00
VER1261	HILUX 2000, D00101	0.00	0.00	0.00
VER1260	HILUX 2000, D00222	0.00	0.00	0.00
VER1259	HILUX 2000, D00222	0.00	0.00	0.00
VER1258	HILUX 2000, D00542	0.00	0.00	0.00
VER1257	HILUX 2000, D00542	0.00	0.00	0.00
VER1256	HILUX 2000, D00122	0.00	0.00	0.00
VER1255	HILUX 2000, D00222	0.00	0.00	0.00
VER1254	HILUX 2000, D00222	0.00	0.00	0.00
VER1252	HILUX 2000, D00500	0.00	0.00	0.00
VER1252	HILUX 2000, D00152	0.00	0.00	0.00
VER1251	HILUX 2000, D00201	0.00	0.00	0.00
FLM0011	TOYOTA HILUX	0.00	0.00	0.00
JTY2222	TOYOTA HILUX	0.00	0.00	0.00
J00004	100'2 HATS	0.00	0.00	0.00
WFF2227	TOYOTA HILUX	0.00	0.00	0.00
0001002	TOYOTA HILUX	0.00	0.00	0.00
		0.00	0.00	0.00

Slide 9

Slide notes: Budget Balances compare Financials against Budget and shows Variance.

Slide 10

Slide notes: The Year to Date is also compared, plus the Annual Budget indicated.



Slide 11

Slide notes:

Q1565936757A.TXT - Notepad

File Edit Format View Help

DDP-15649261529A				0.00	0.00
DDP-1565052003A	DDP Proj: Customer Order 1110	DDP-Projects	CHARGES	15,790.00	15,790.00
		**	STOCK	0.00	21.90
DDP-1565052003A		DDP-Projects		15,790.00	15,811.90
DDP-1565052003A		**		15,790.00	15,811.90
DDP-1565130429A	DDP Proj: Customer Order 1111	DDP-Projects	SALTS INCOME	-249,999.99	-249,999.99
		**	STOCK	0.00	429.00
DDP-1565130429A		DDP-Projects		-249,999.99	-249,371.99
DDP-1565130429A		**		-249,999.99	-249,371.99
FR0001	FACTORY BOILER no 1	PIA		0.00	0.00

reportkey=FORMAST-BALG-CTY
CHDumay Hoops Inc.

10:12:27 14 NOV 2010 page 14

Job Balances by Cost Type Jan 2010 - Nov 2010

Key.....	Jobname.....	Type.....	Cost Types.....	Current	Year to Date
FR0001		**			
FR0001		PIA		0.00	0.00
FR0001		**		0.00	0.00
seq002	Conveyor Chain	PIA		0.00	0.00
seq002		**		0.00	0.00
seq002		PIA		0.00	0.00
seq002	Transmission Chain # 2	PIA		0.00	0.00
seq002		**		0.00	0.00
seq002		PIA		0.00	0.00
seq002		**		0.00	0.00
j02020	JUICE PLANT	PIA	MANUFACTURE	0.00	0.00
j02020		**		0.00	0.00
j02020		PIA		0.00	0.00
j02020		**		0.00	0.00

Slide 12

Slide notes: Cost Type Balances show Current Month and Year to Date for all Cost Types transacted on each Job.