

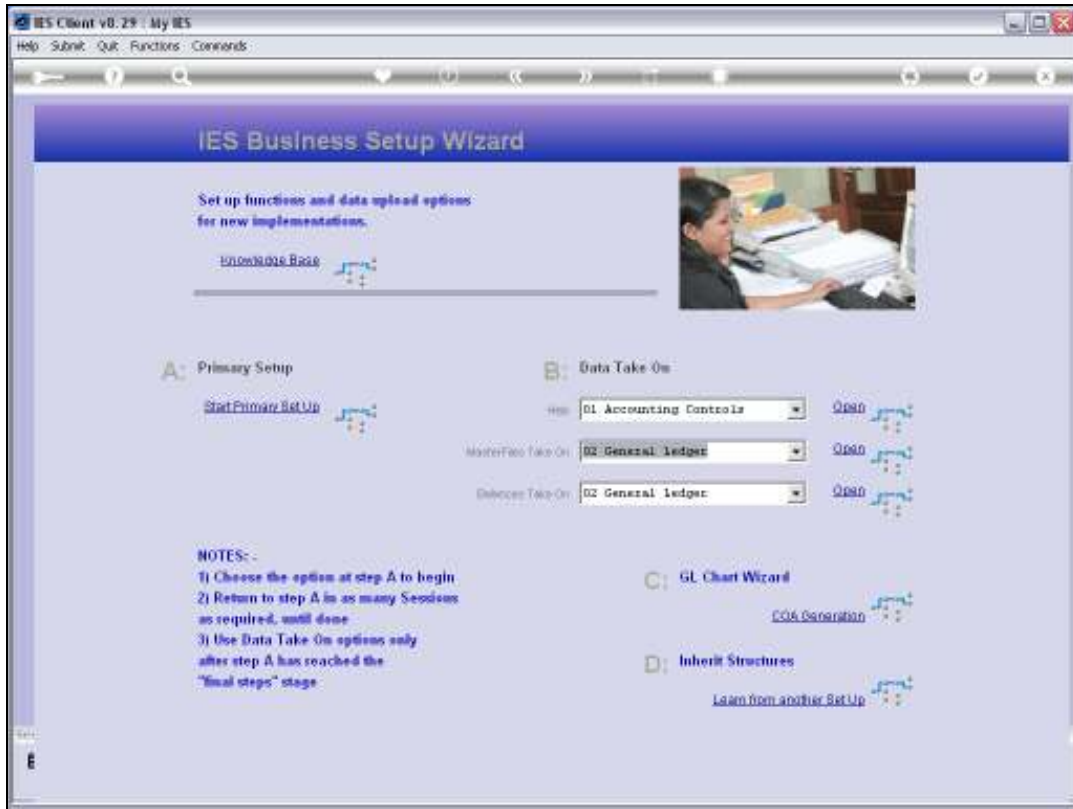
Slide 1

Slide notes: The GL Report Flags can be manually captured, but it is more common to upload the lists of Flags during Implementation, and we can do this at the Set Up Application. Afterwards, when we have only a few new Items or changes then it makes sense to use the manual capture options.



Slide 2

Slide notes: At Master Files, we select General Ledger and then we choose 'open'.



Slide 3
Slide notes:



Slide 4

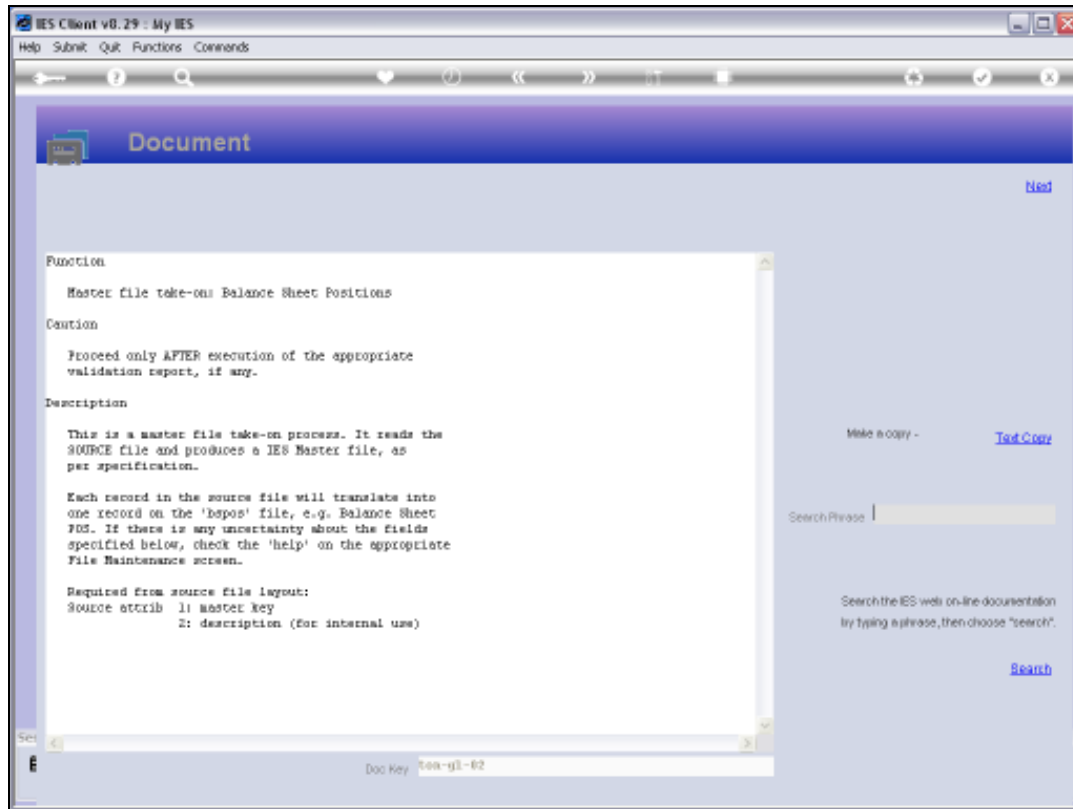
Slide notes: The Report Flags can be uploaded before, during or after using the Chart wizard to generate the Chart of Accounts. It is just easier and less work with the Chart generation if we do it first.



Slide 5
Slide notes:

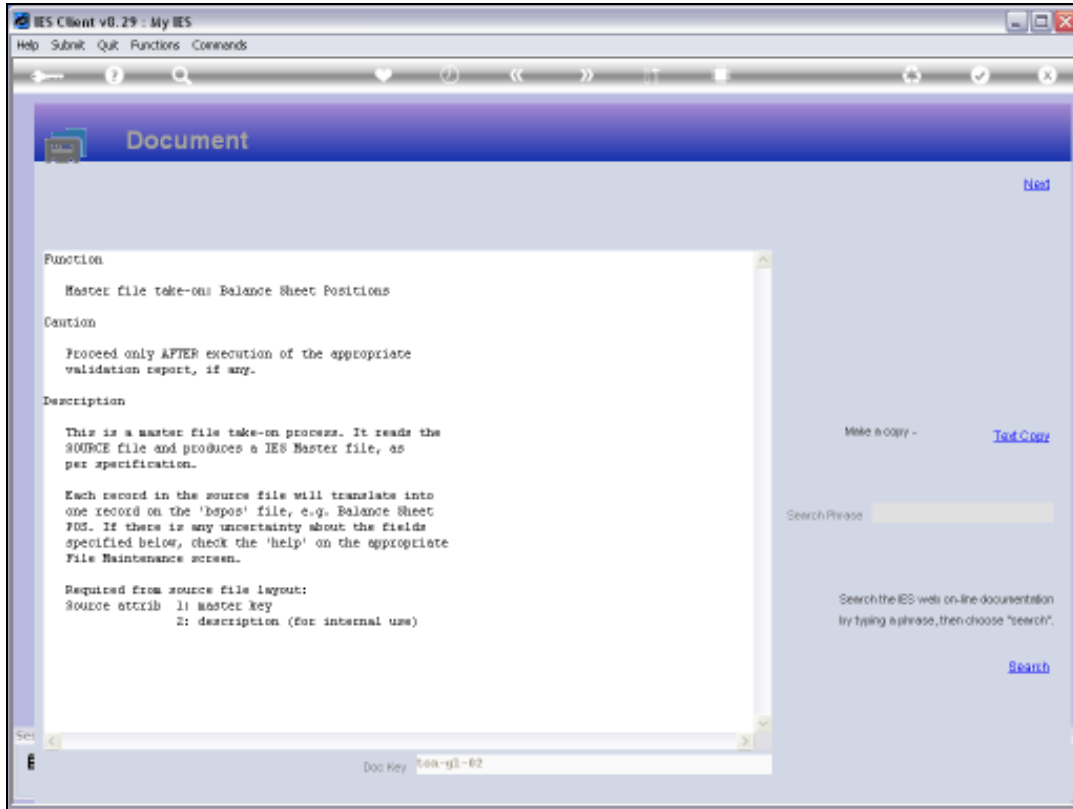


Slide 6
Slide notes:



Slide 7

Slide notes: When we look at the required layout for the BSPOS Balance Sheet Flags, we see that we only need 2 columns, with a Code and a Description in each case. In fact, all the Report Flag types work like that, except that the ISPOS Income Statement Flags require one more column.



Slide 8
Slide notes:

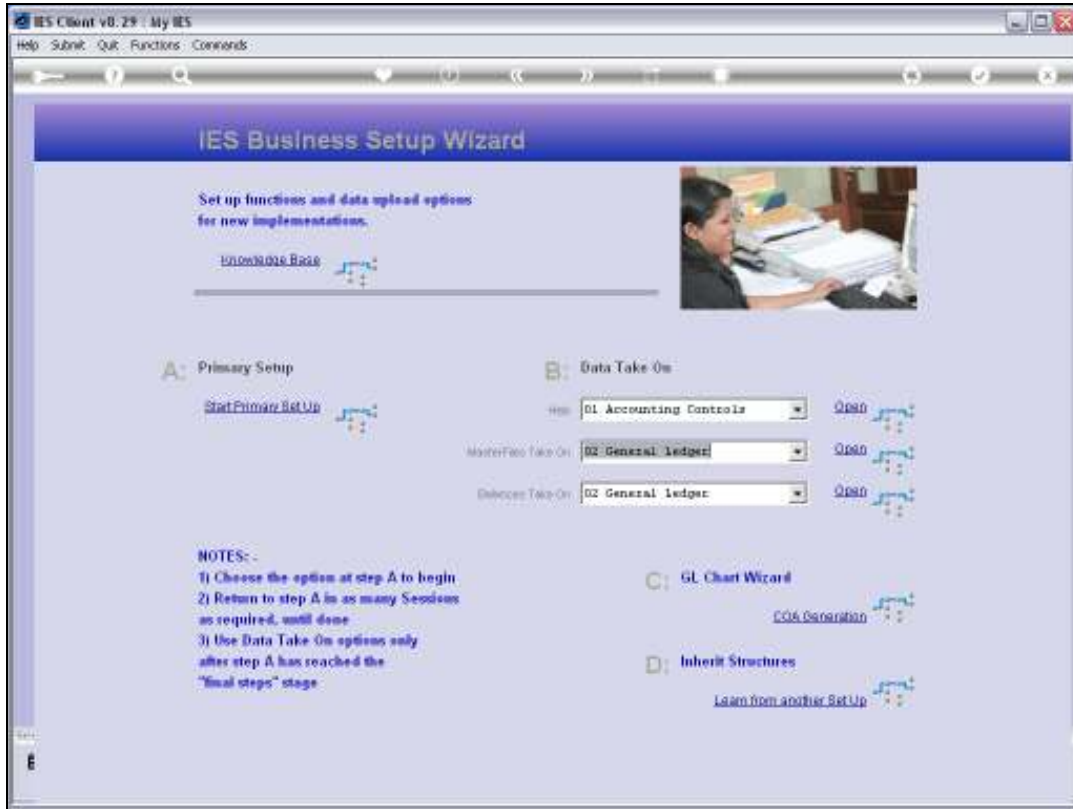


Slide 9
Slide notes:



Slide 10

Slide notes:



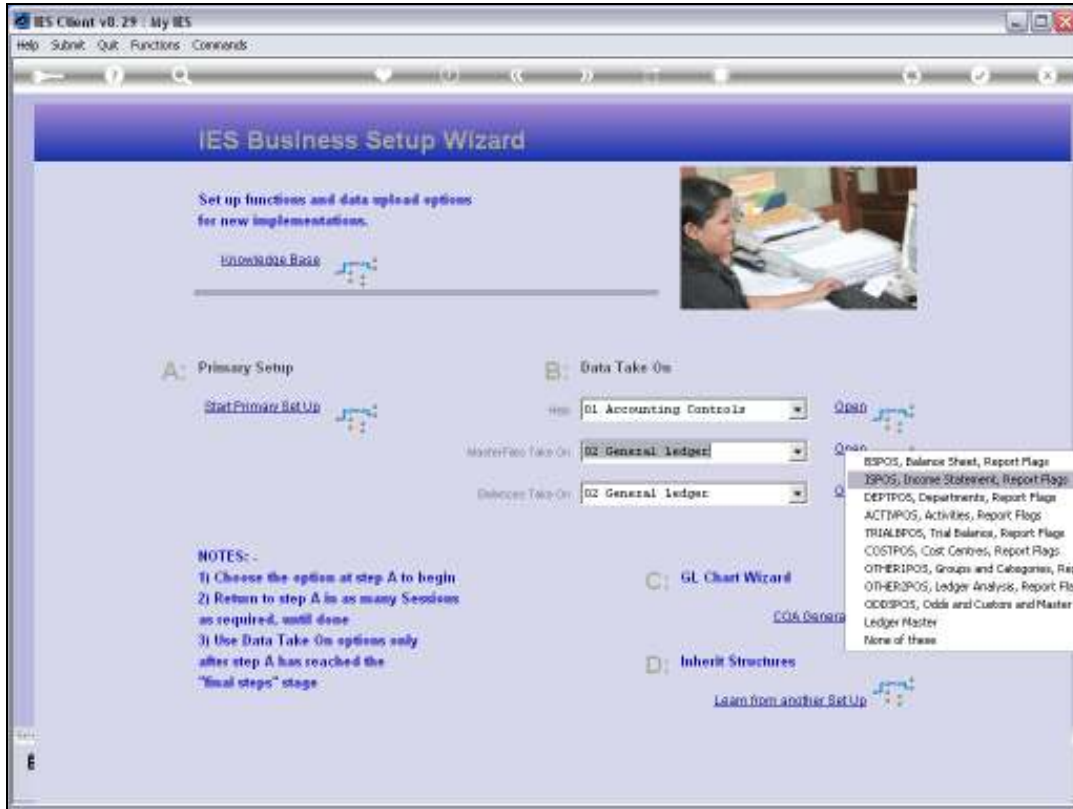
Slide 11
Slide notes:



Slide 12
Slide notes:



Slide 13
Slide notes:

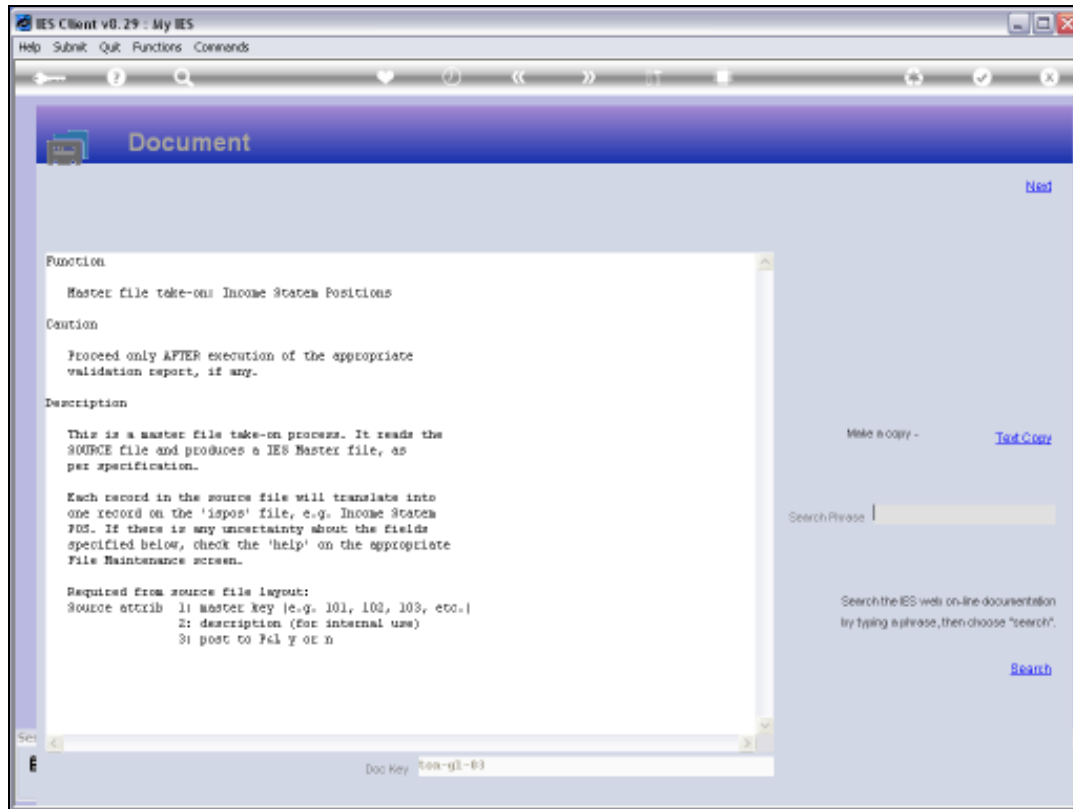


Slide 14
Slide notes:

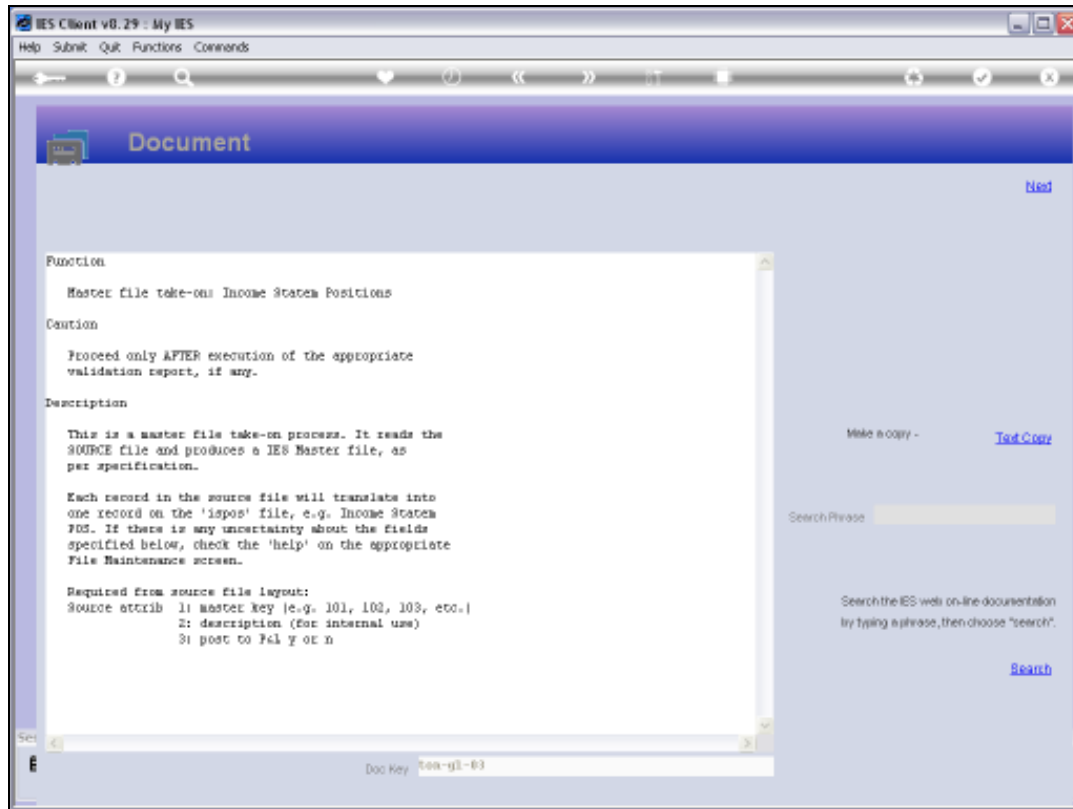


Slide 15

Slide notes:

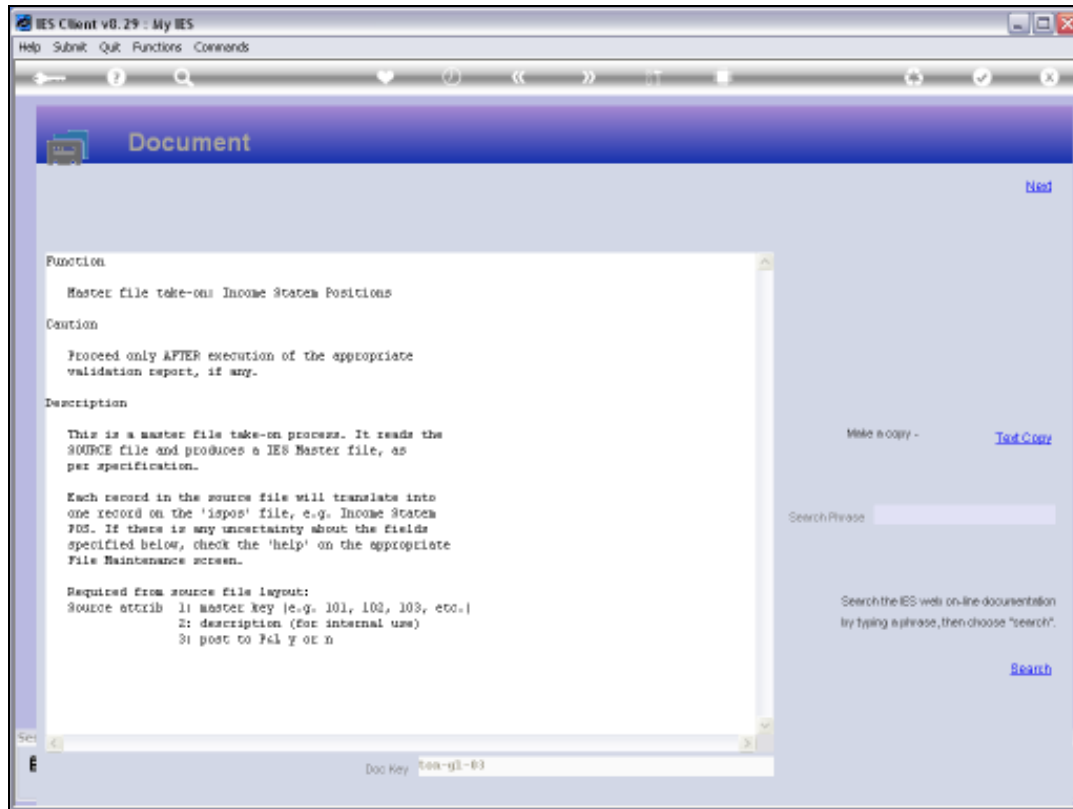


Slide 16
Slide notes:

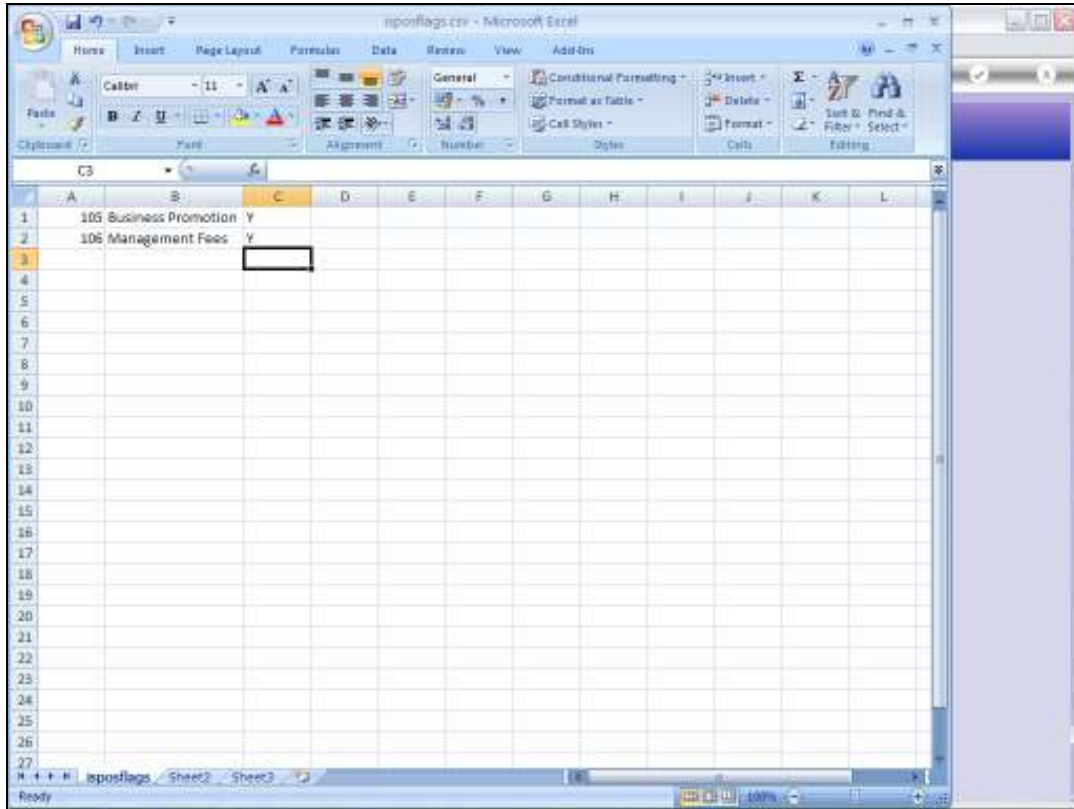


Slide 17

Slide notes: For the ISPOS Flags, we also have a "Y" for each Flag where the Accounts that use this Flag, will be closed to P&L at Year End. There is usually at least 1 Flag that says "N", and that is the one that we use with Balance Sheet Accounts, which are not closed to P&L.

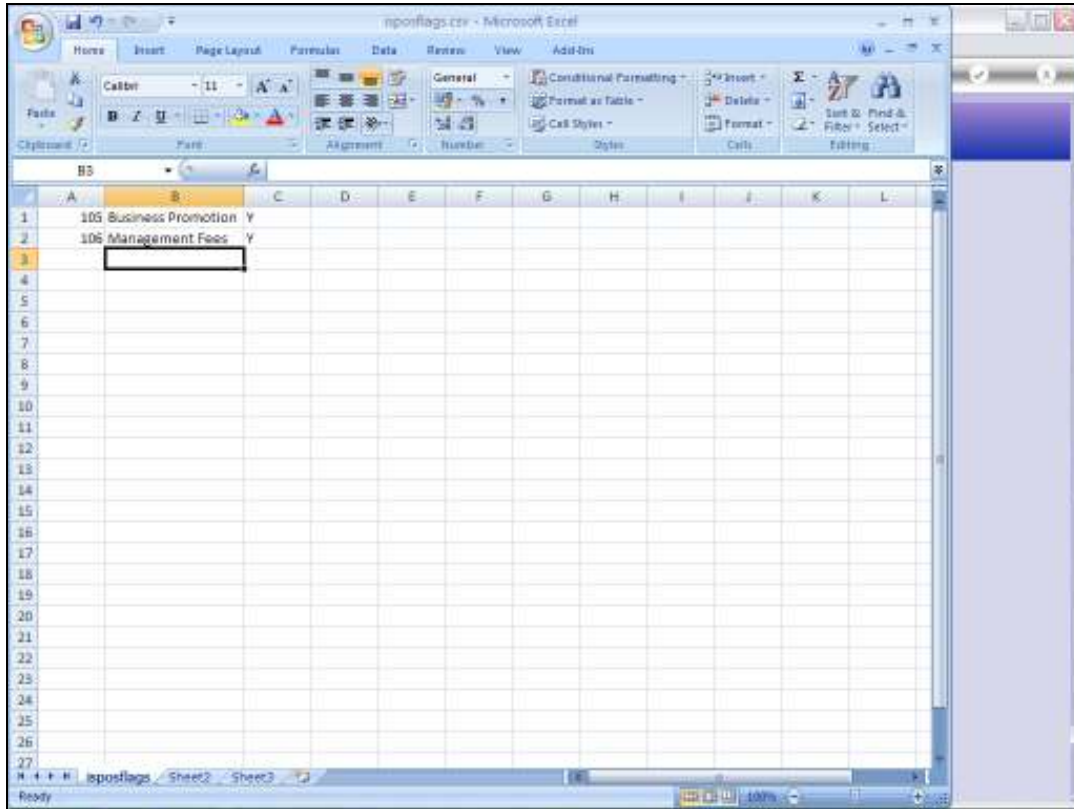


Slide 18
Slide notes:



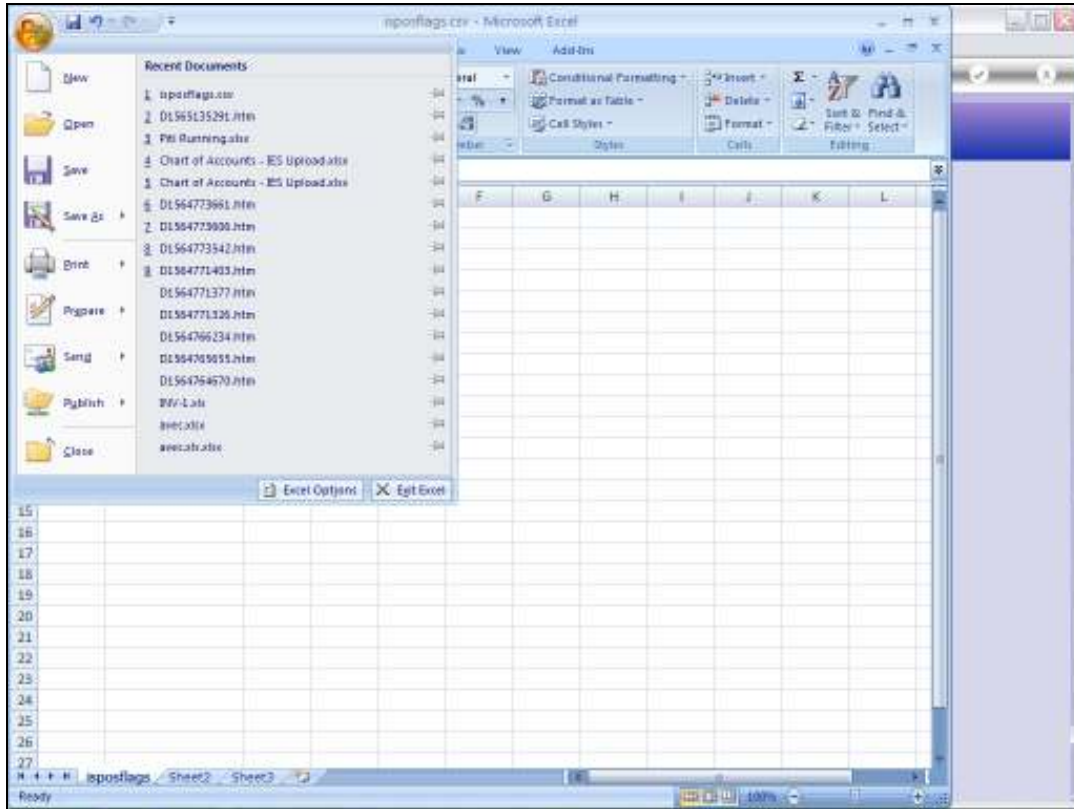
Slide 19

Slide notes: So in our example here we have 2 Flags that we will upload now. Of course, we can upload as many times as we want, but we cannot upload a Flag that is already there.



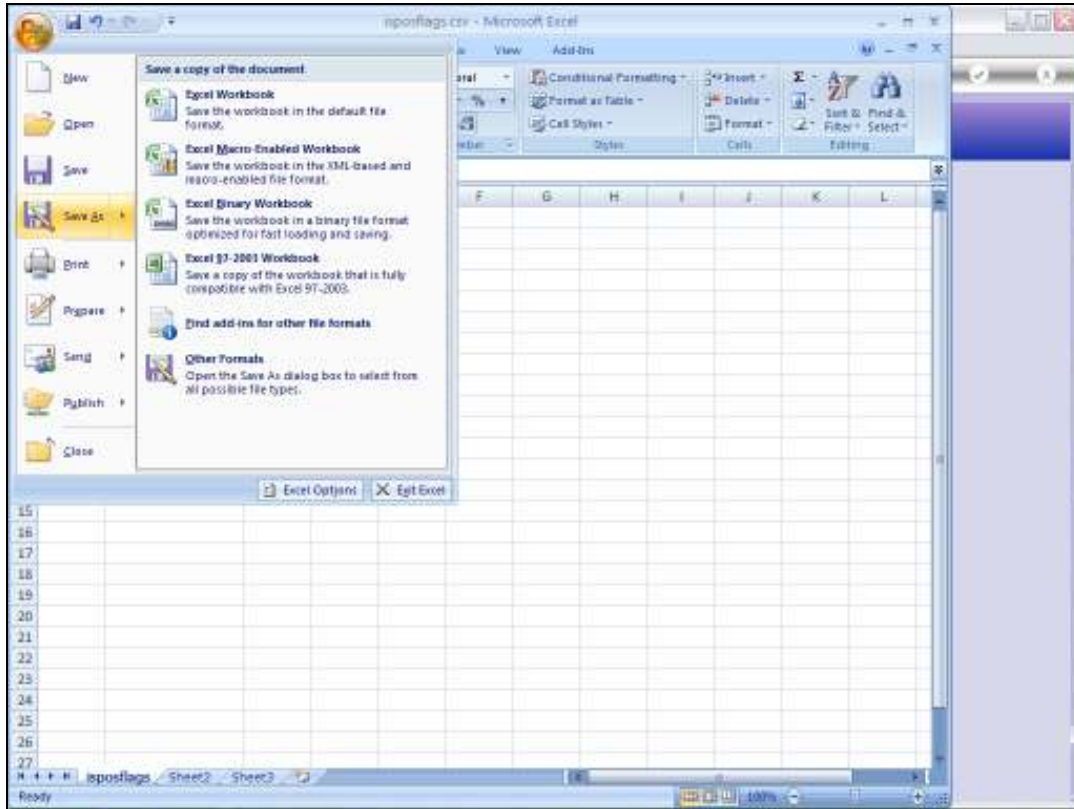
Slide 20

Slide notes:



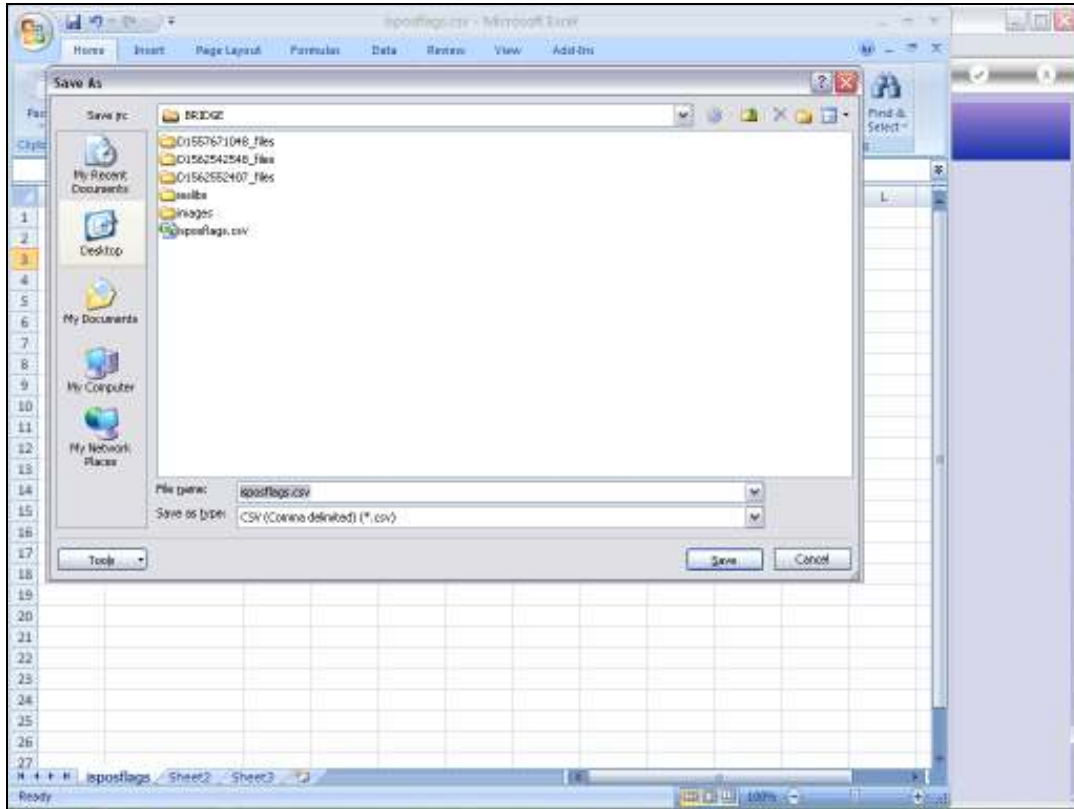
Slide 21

Slide notes:



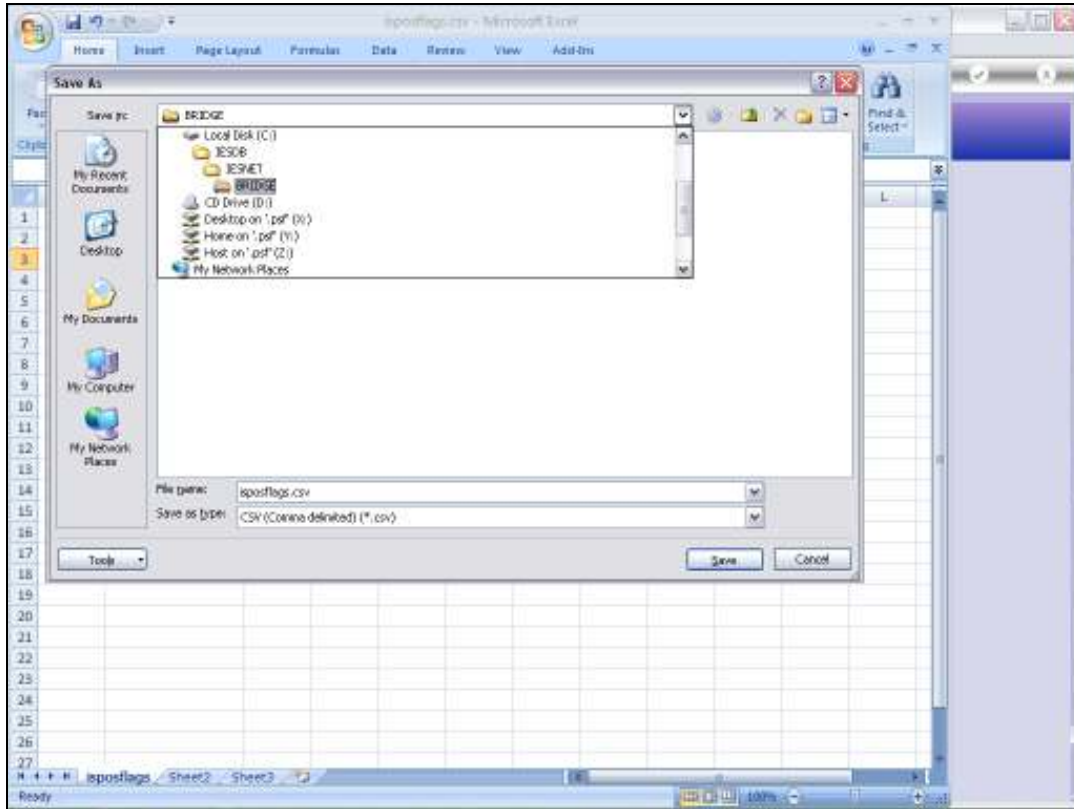
Slide 22

Slide notes:



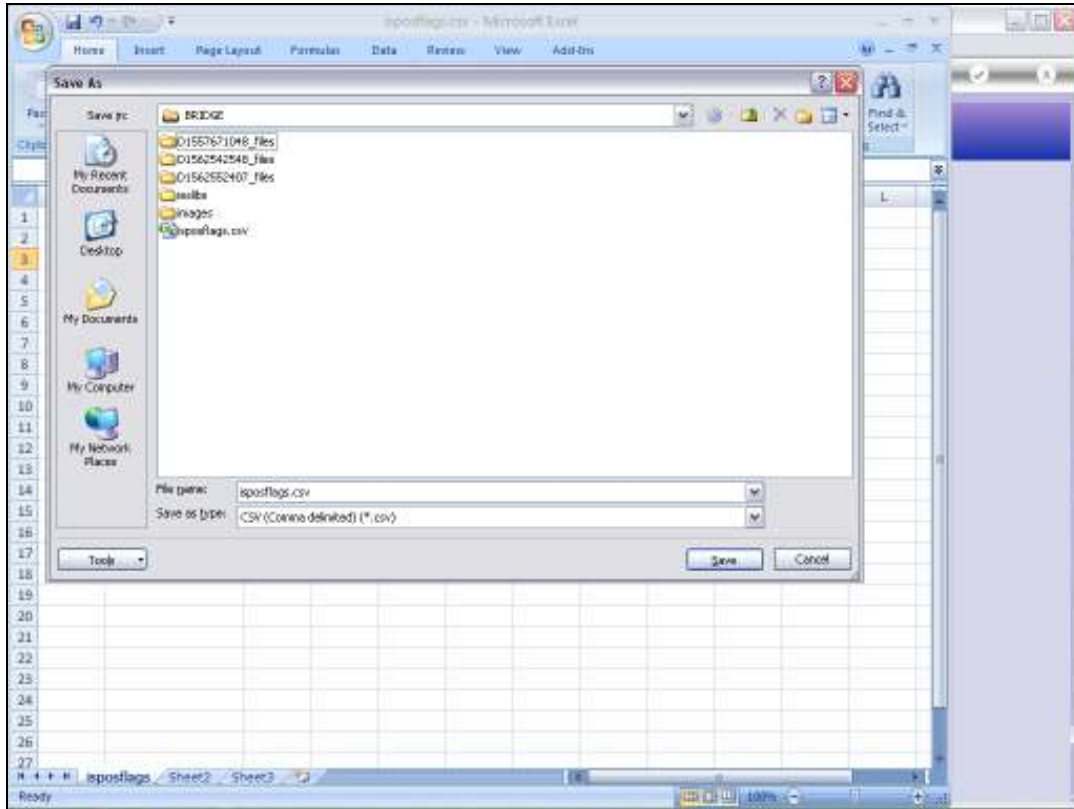
Slide 23

Slide notes:



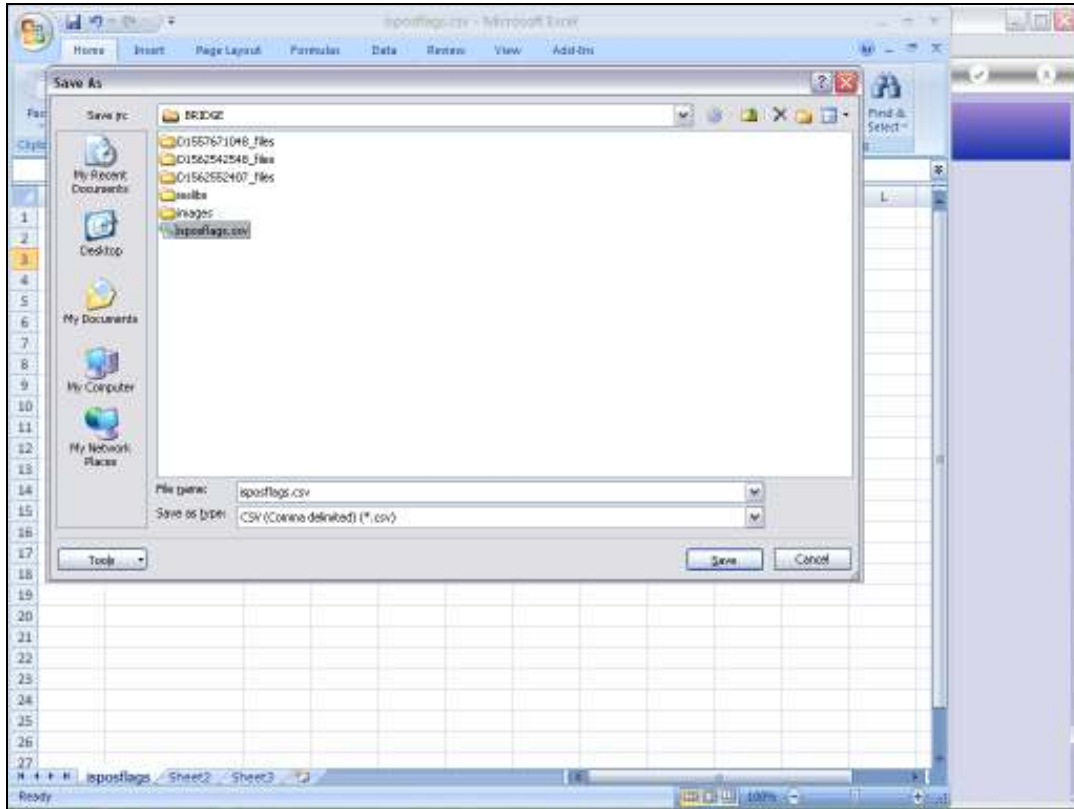
Slide 24

Slide notes:



Slide 25

Slide notes: In order to upload the File, we need to put it on the BRIDGE folder as a CSV file.



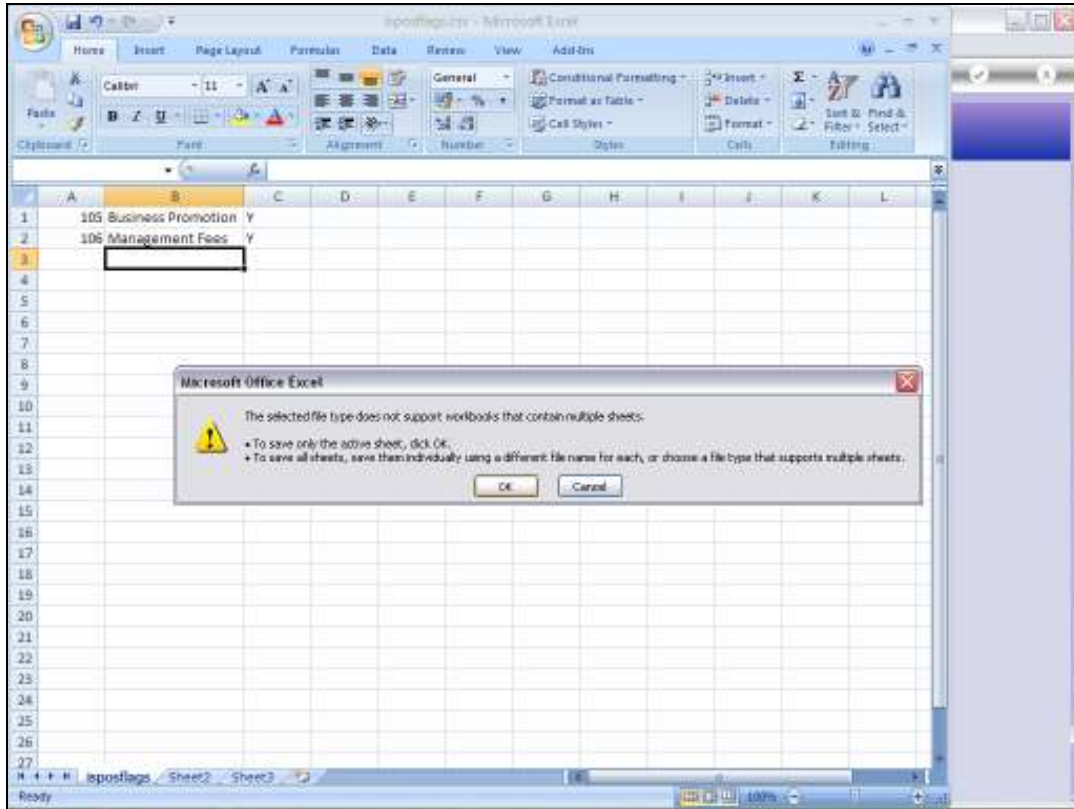
Slide 26

Slide notes:

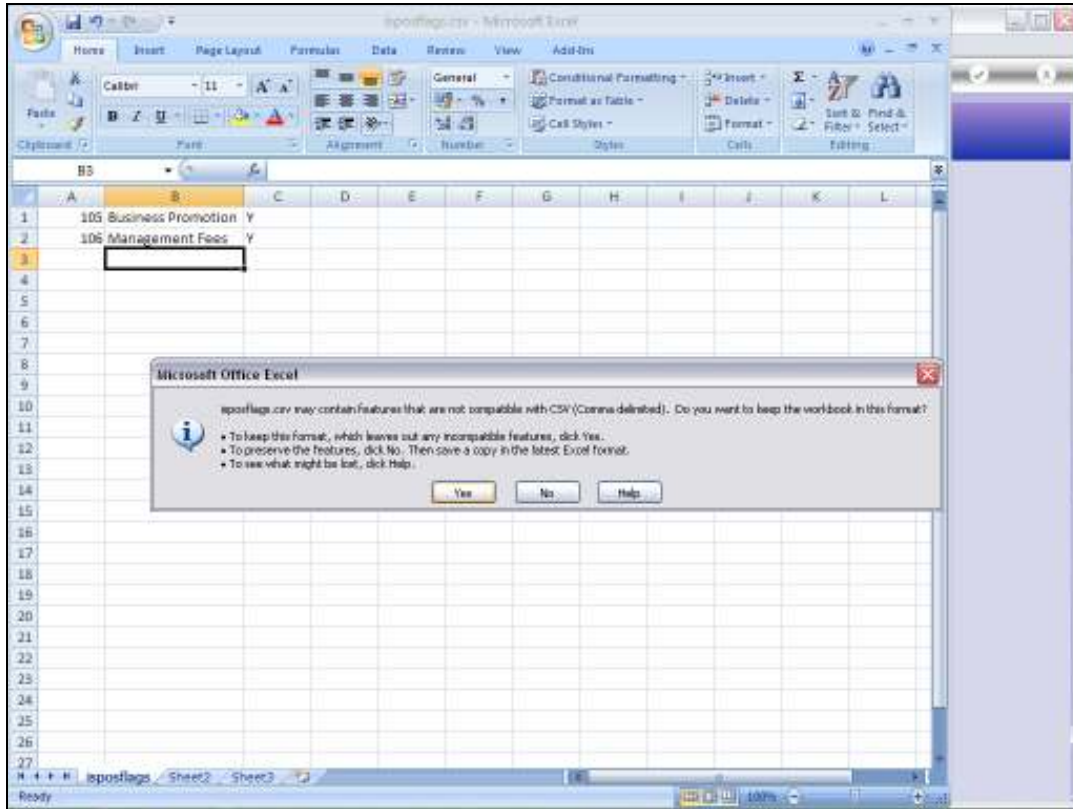


Slide 27

Slide notes:

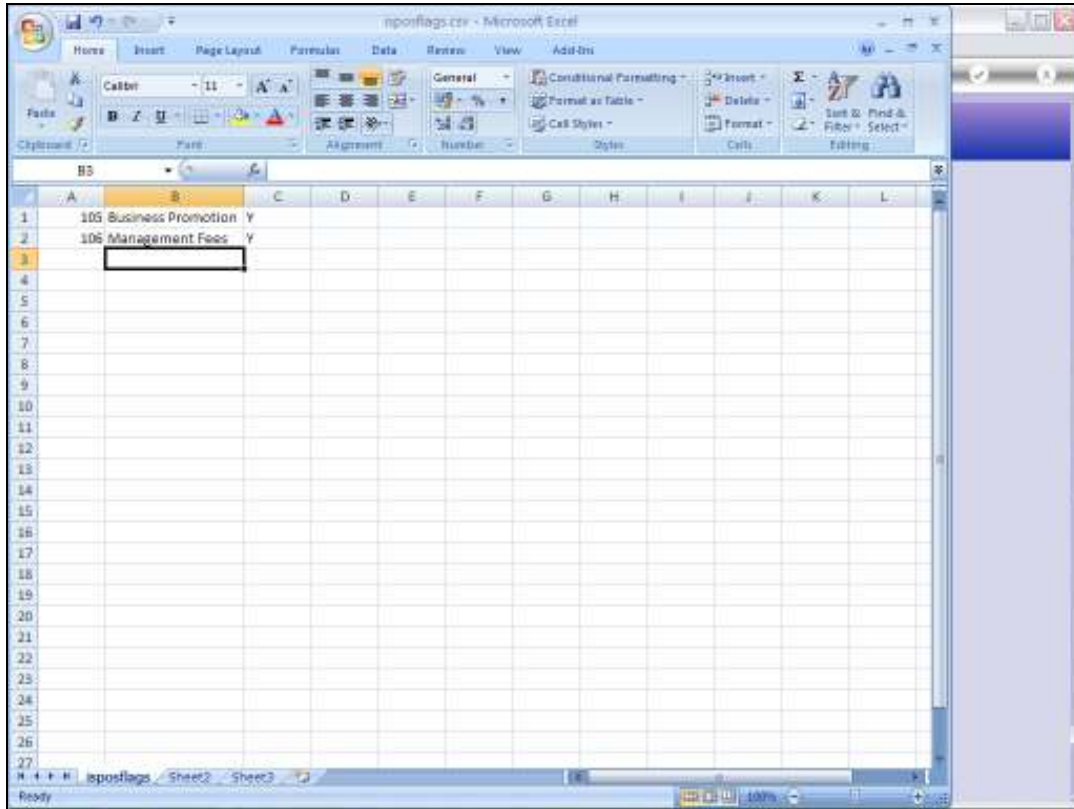


Slide 28
Slide notes:



Slide 29

Slide notes:



Slide 30

Slide notes:



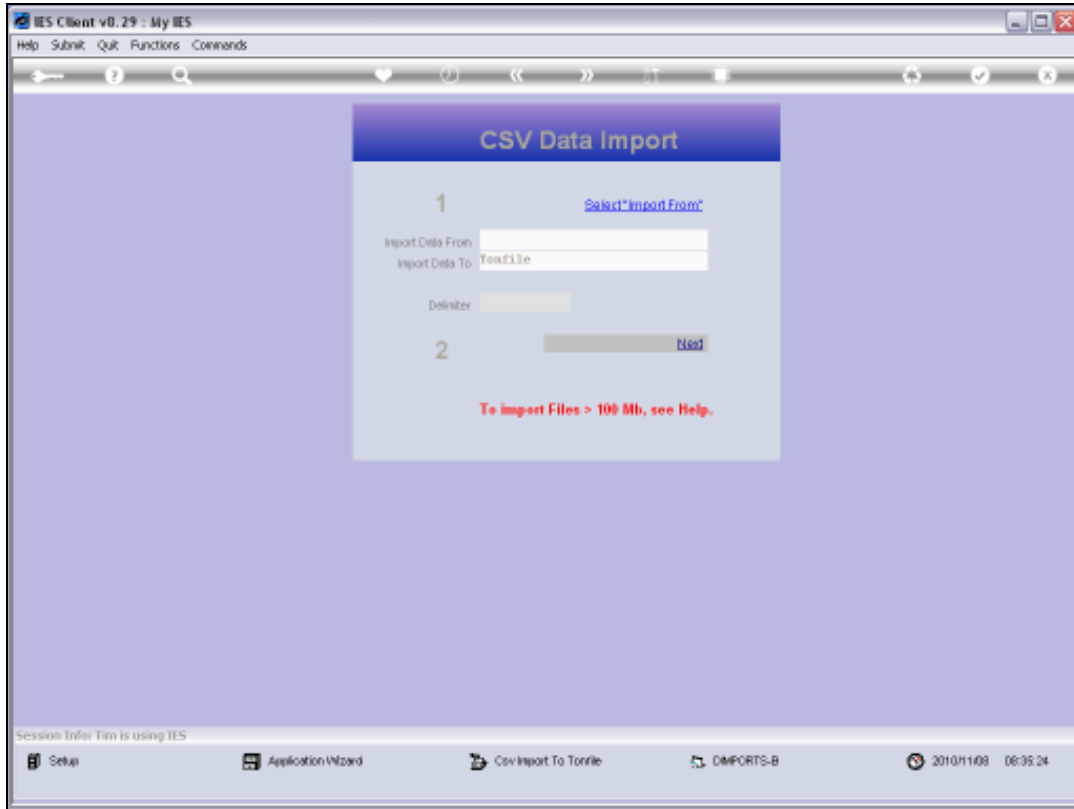
Slide 31

Slide notes: Then we import the file.



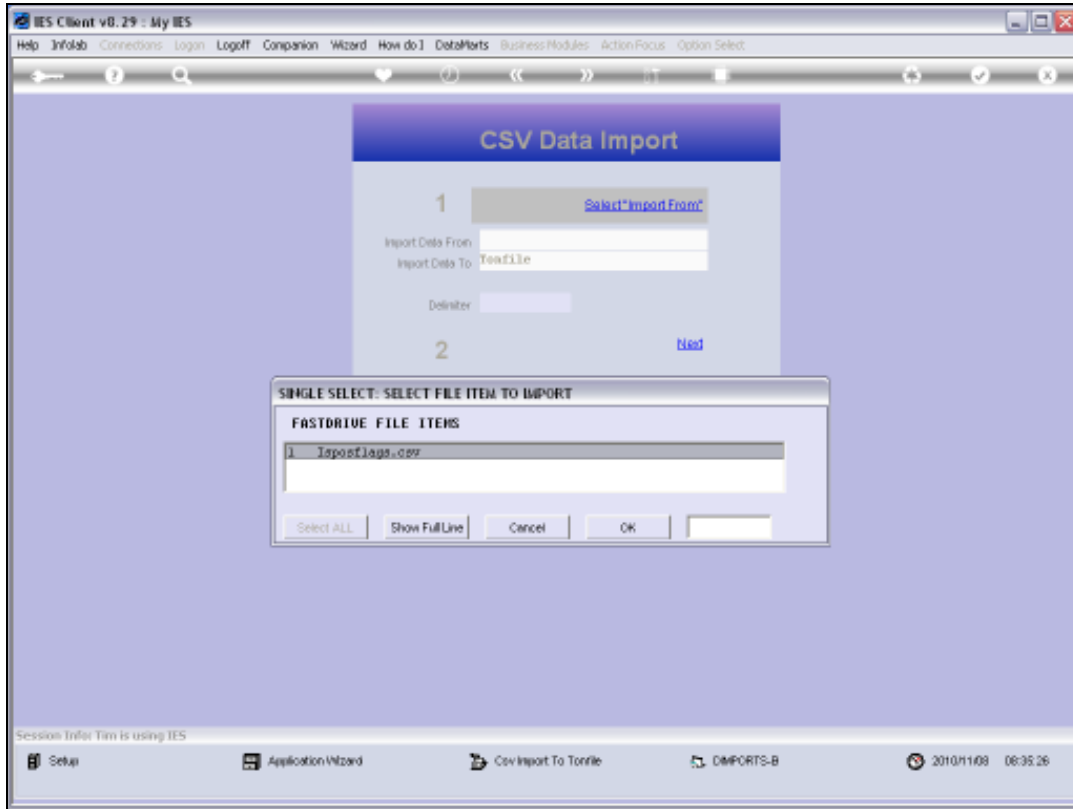
Slide 32

Slide notes:

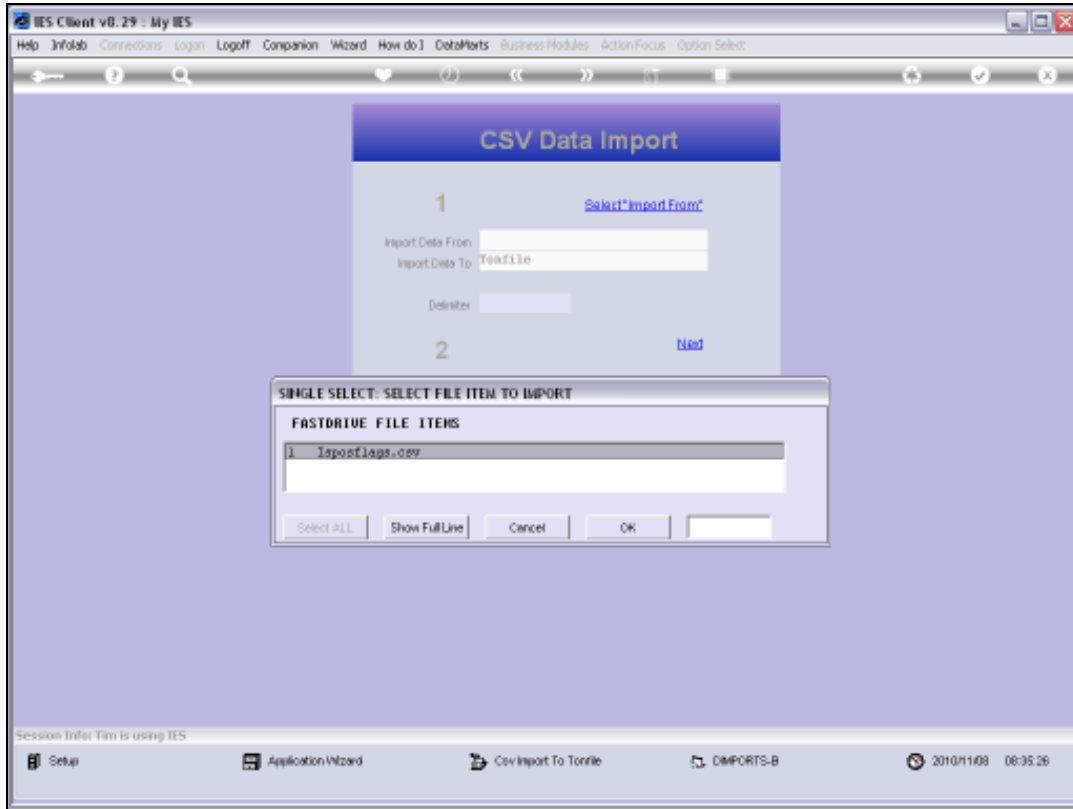


Slide 33

Slide notes:

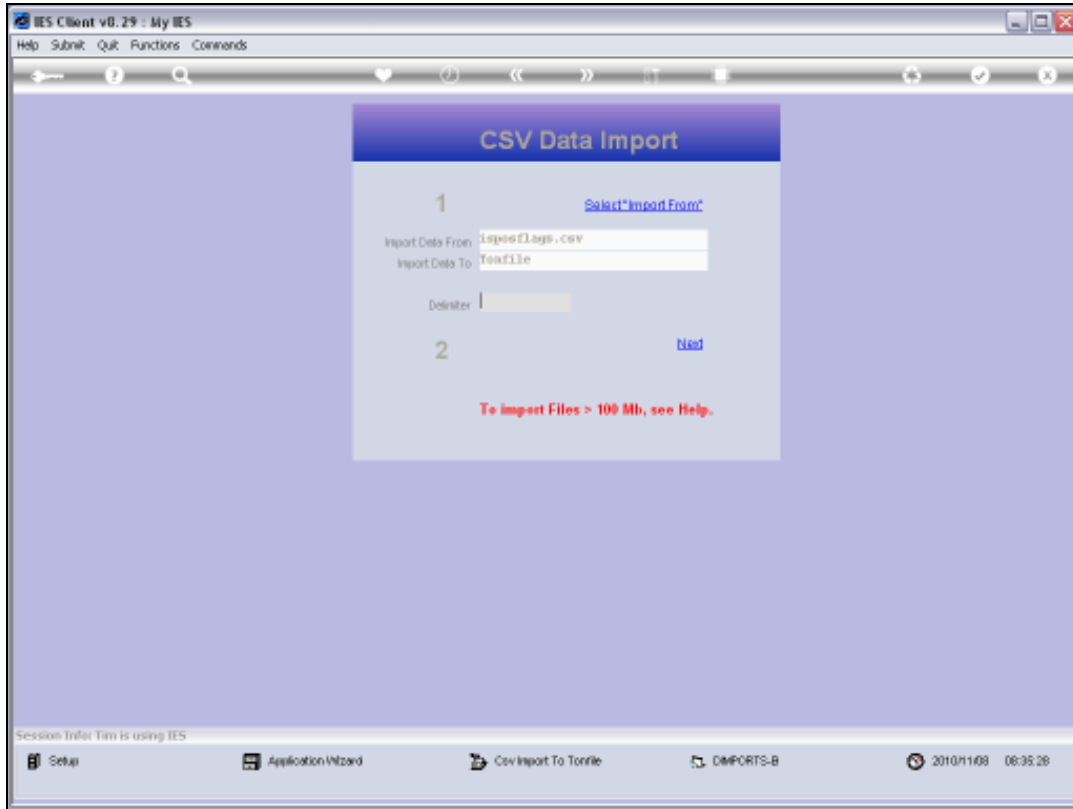


Slide 34
Slide notes:



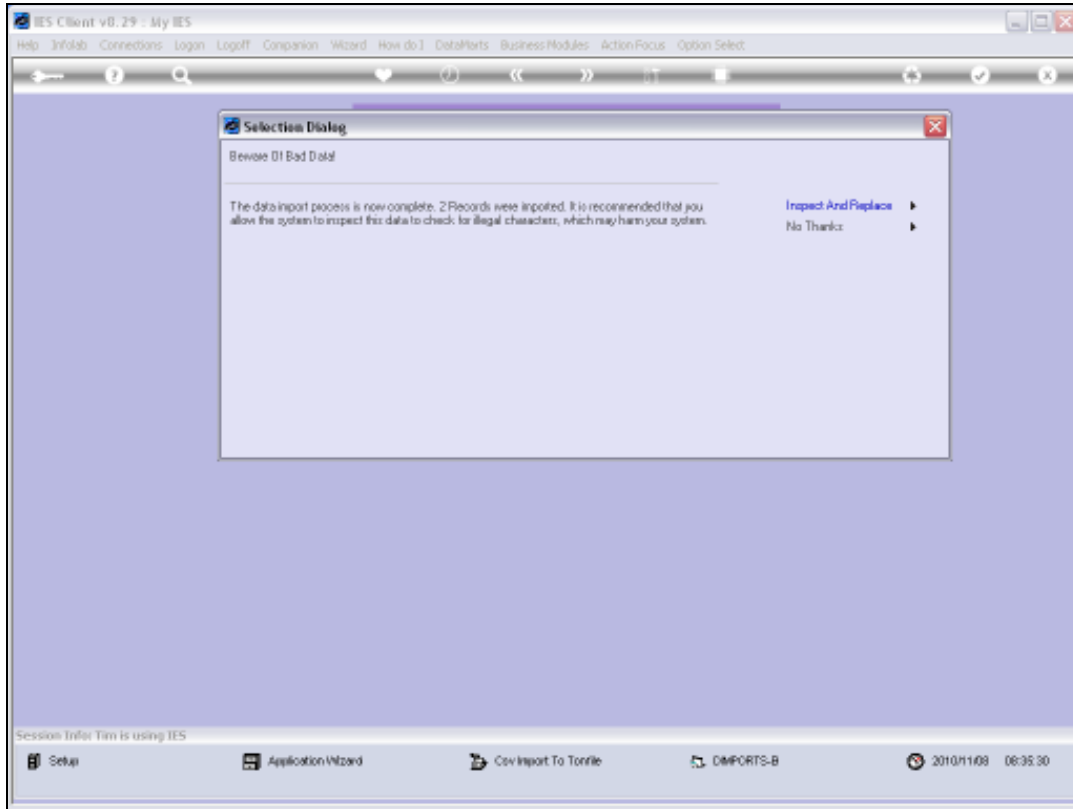
Slide 35

Slide notes:

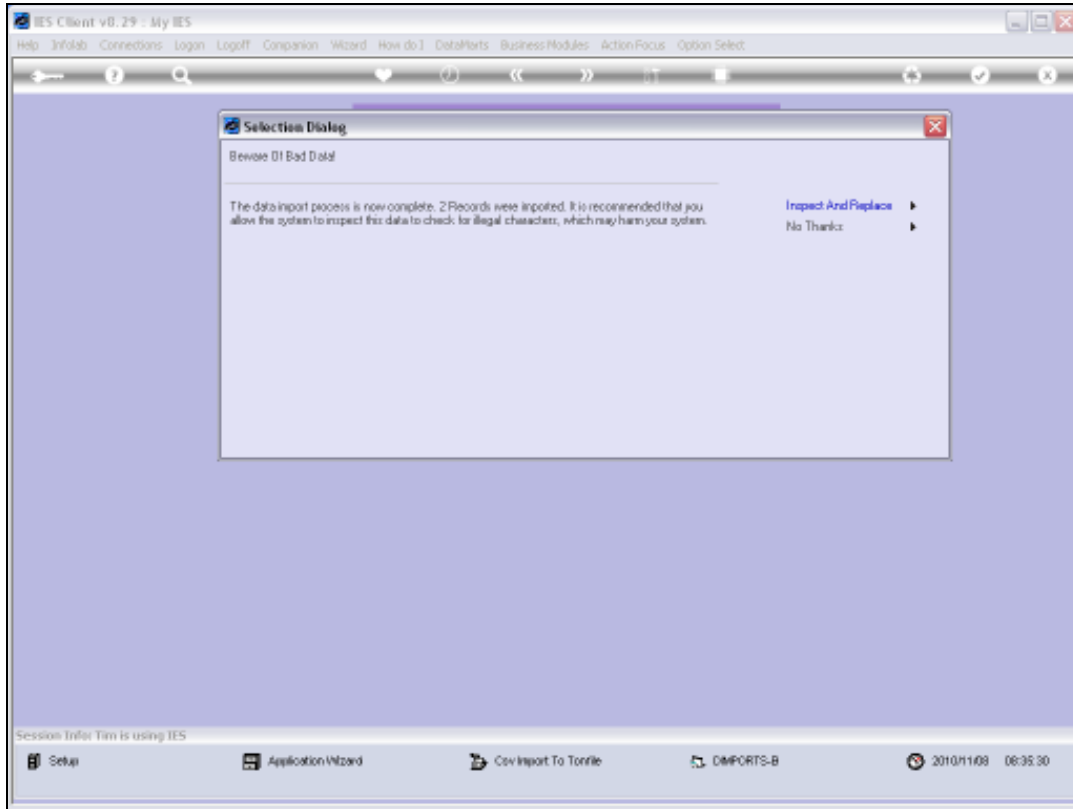


Slide 36

Slide notes:



Slide 37
Slide notes:



Slide 38
Slide notes:



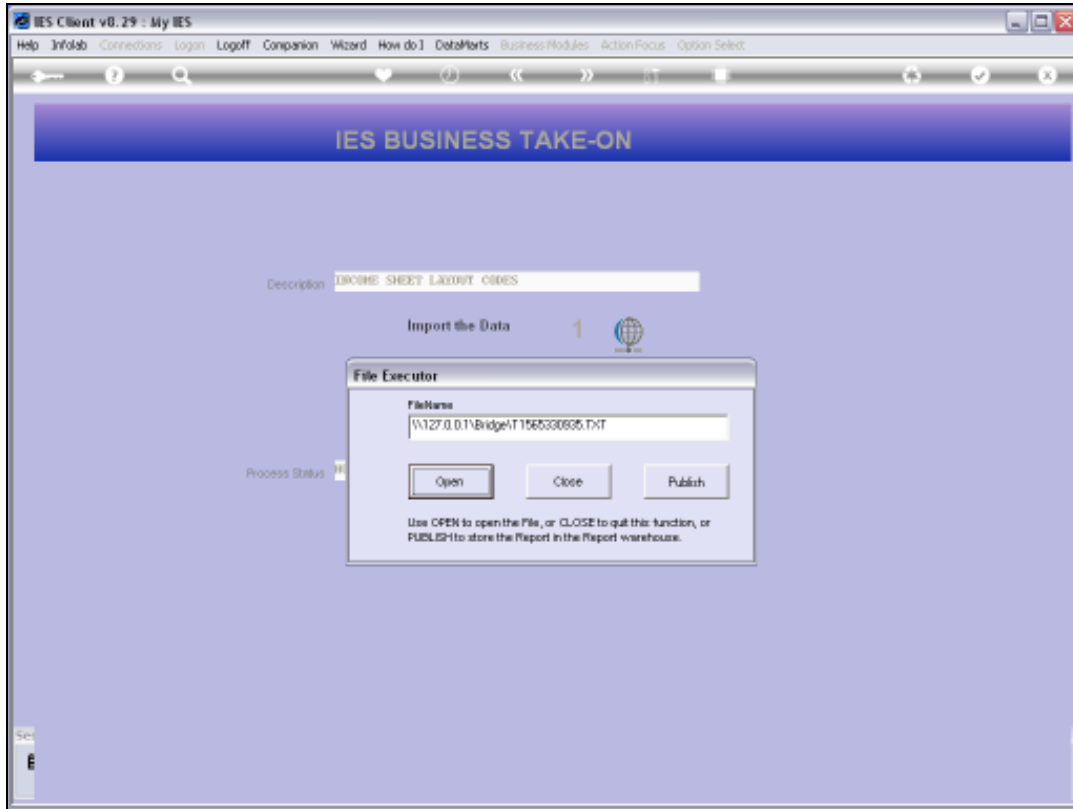
Slide 39

Slide notes:

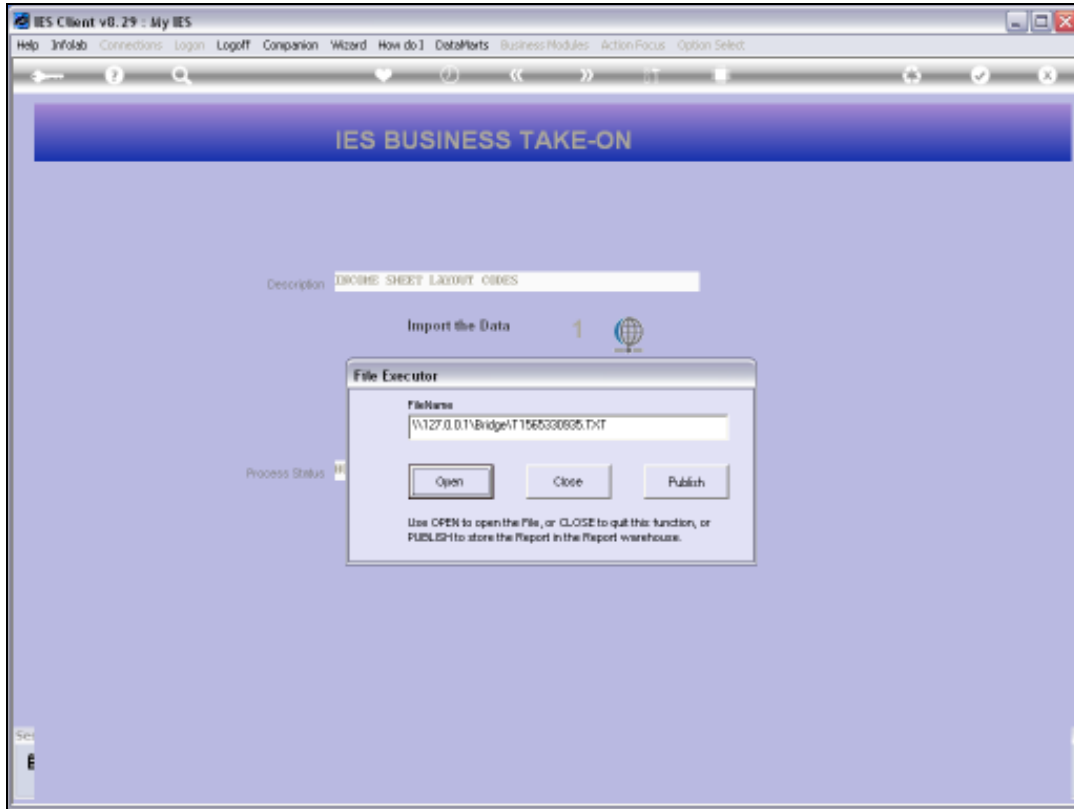


Slide 40

Slide notes:

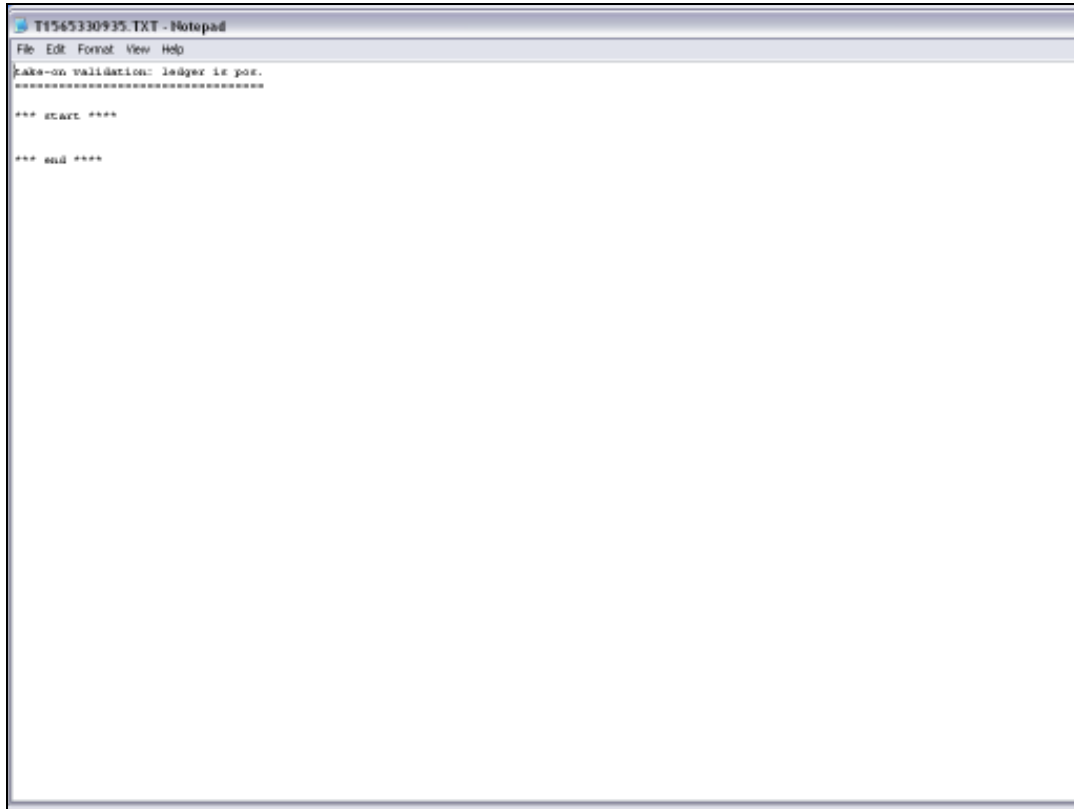


Slide 41
Slide notes:



Slide 42

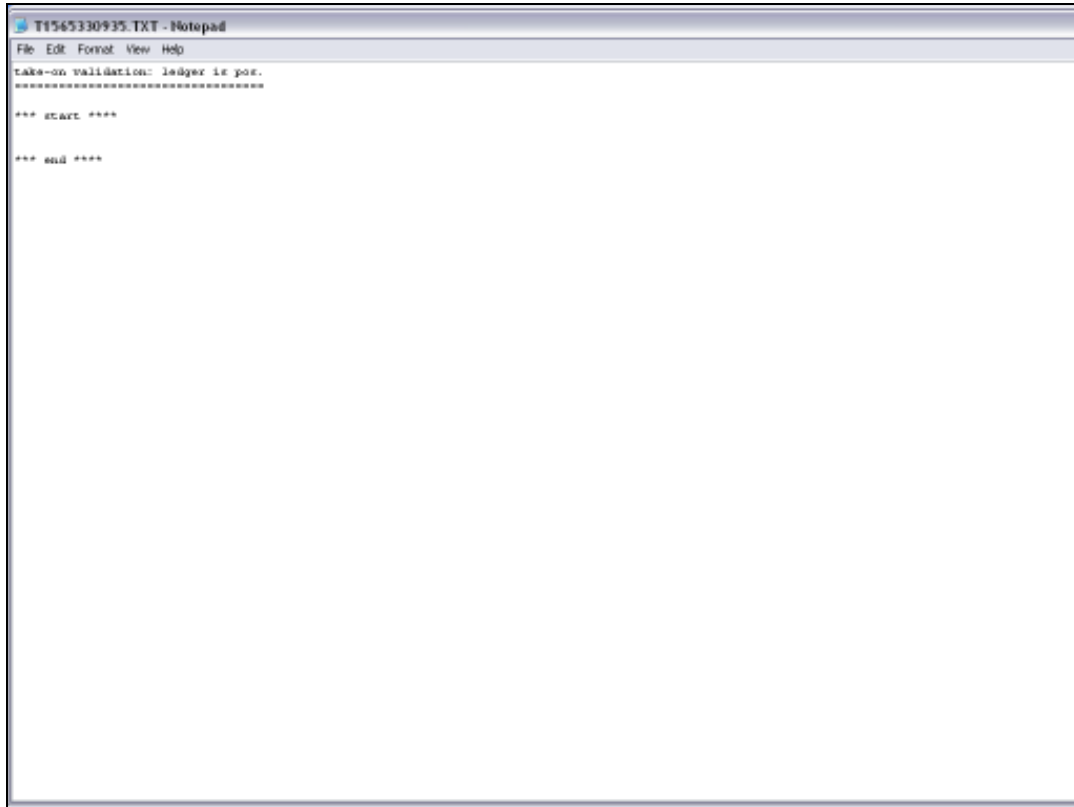
Slide notes:



```
T1565330935.TXT - Notepad
File Edit Format View Help
Take-on validation: ledger is pos.
*****
*** start ***
*** end ***
```

Slide 43

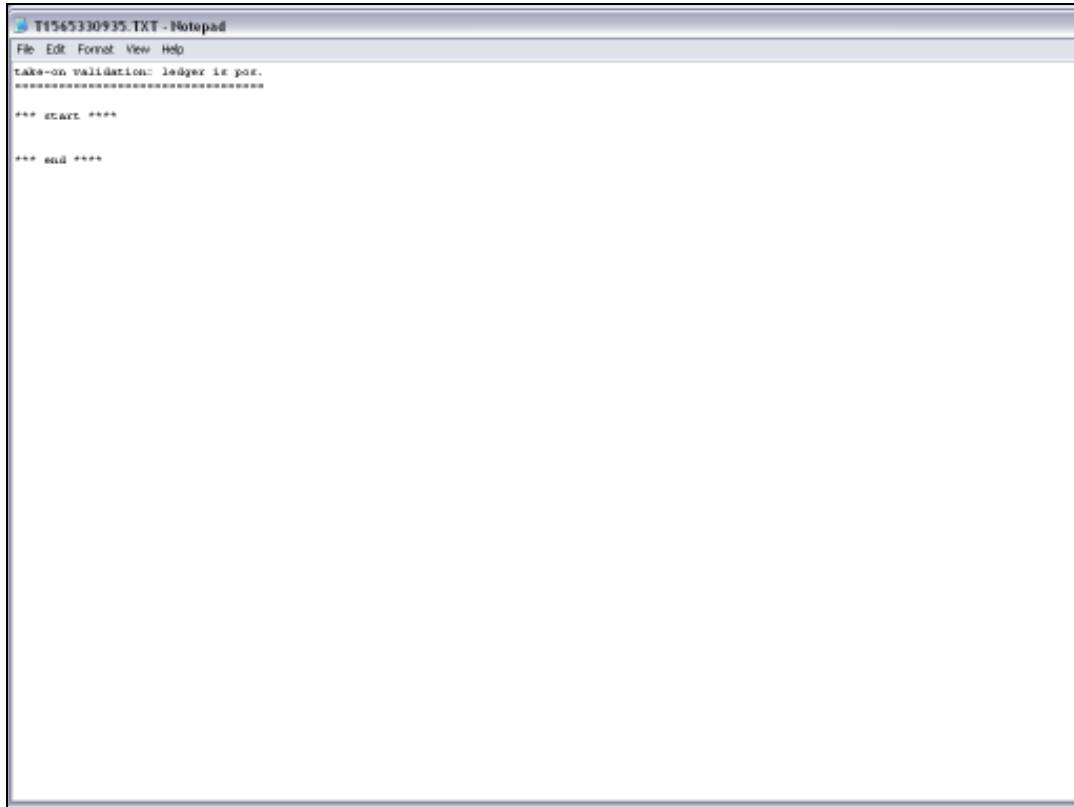
Slide notes: The Validation Report should have no entries between 'start' and 'end'.



```
T1565330935.TXT - Notepad
File Edit Format View Help
take-on validation: ledger is pos.
=====
*** start ***
*** end ***
```

Slide 44

Slide notes:



```
T1565330935.TXT - Notepad
File Edit Format View Help
take-on validation: ledger is pos.
*****
*** start ***
*** end ***
```

Slide 45

Slide notes:



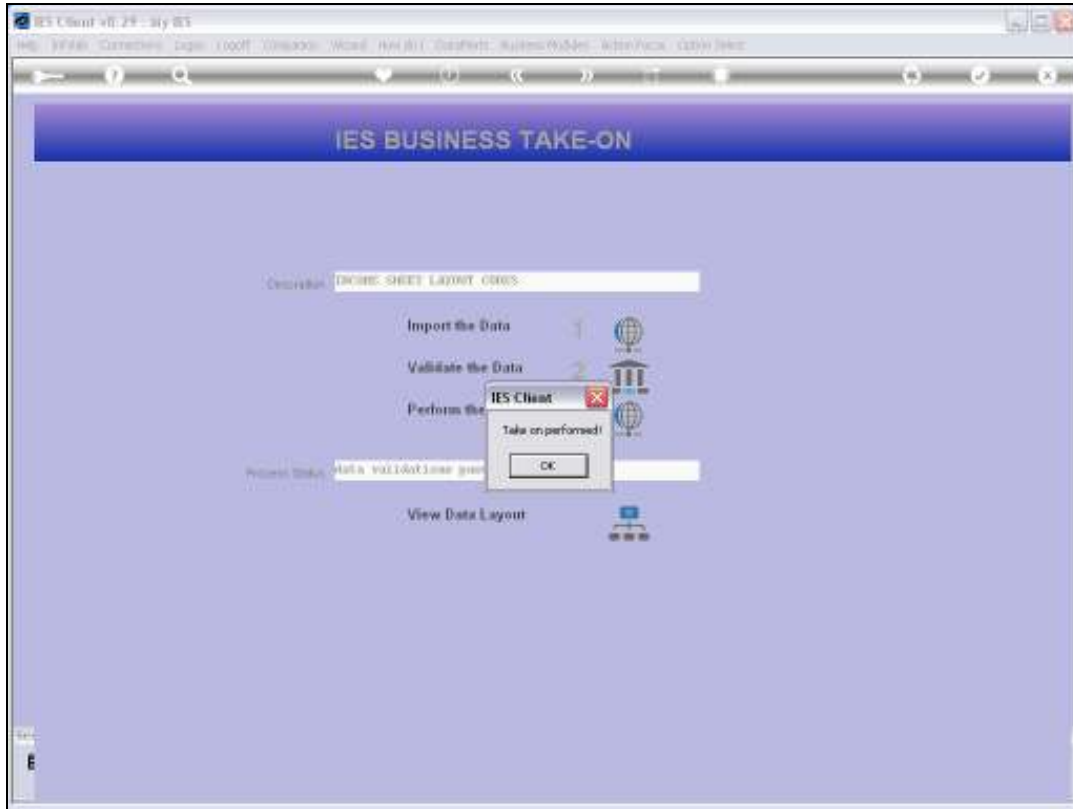
Slide 46

Slide notes:



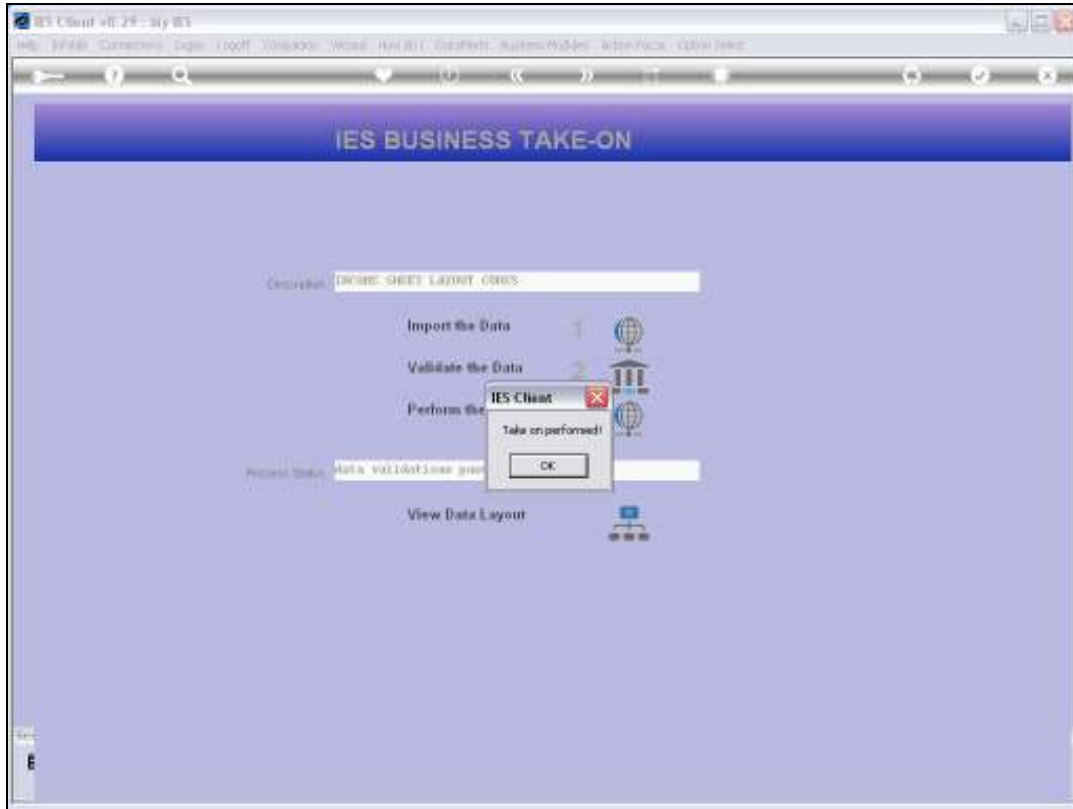
Slide 47

Slide notes:



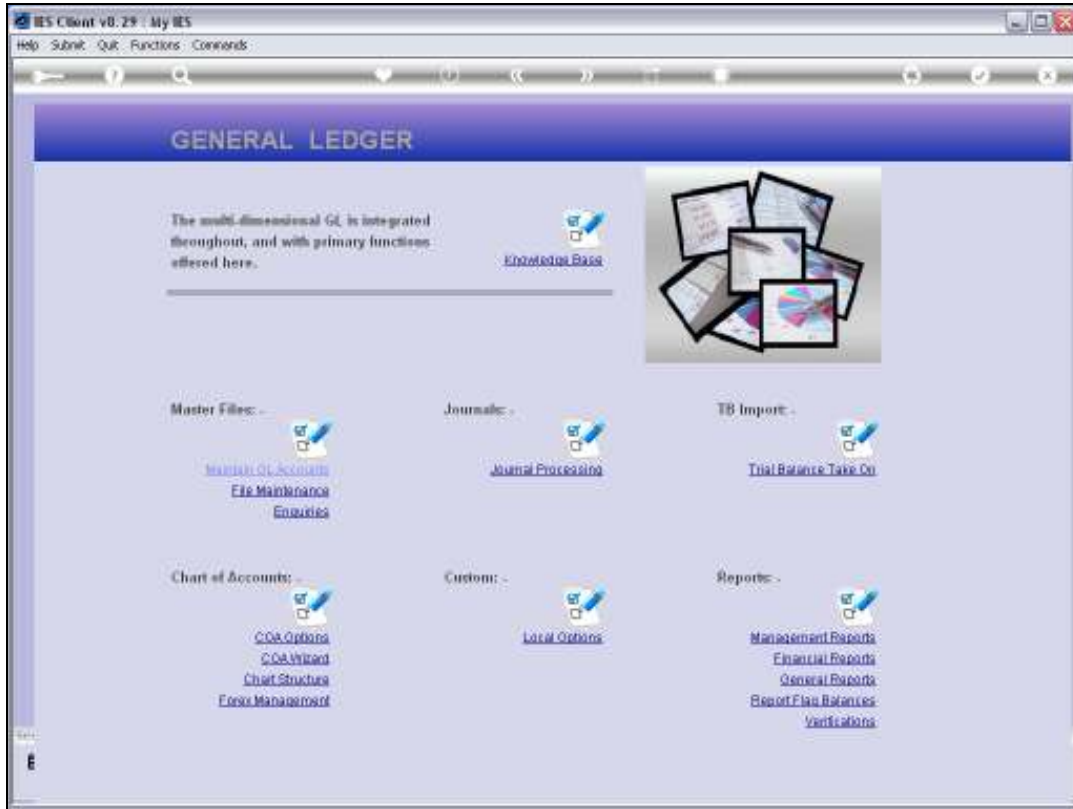
Slide 48

Slide notes: The Take On has now been performed successfully, and for the sake of demonstration, we will check 1 of these entries in the Ledger to see if it was uploaded correctly.

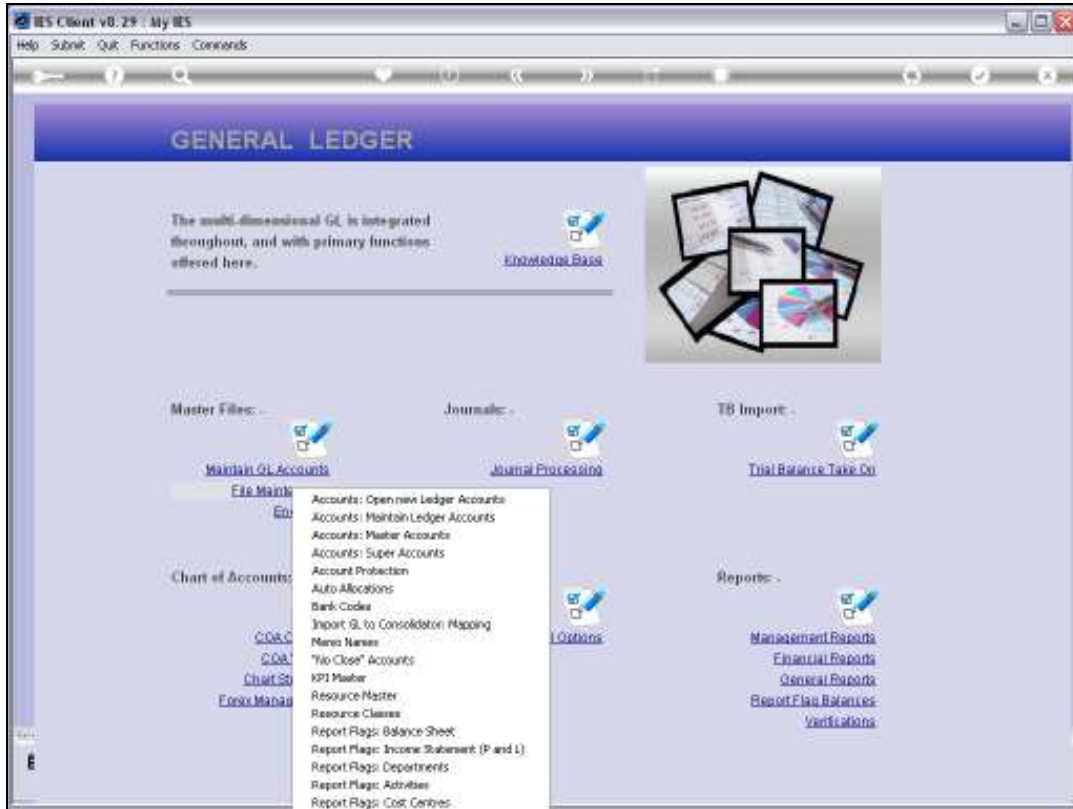


Slide 49

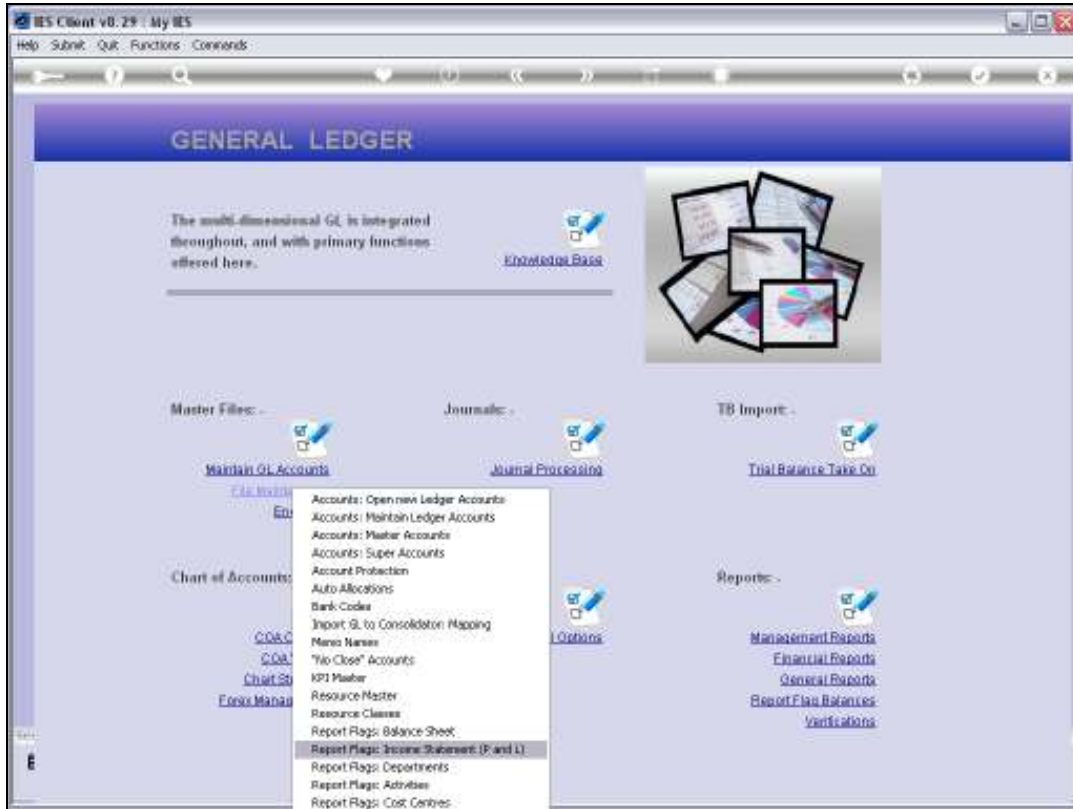
Slide notes:



Slide 50
Slide notes:

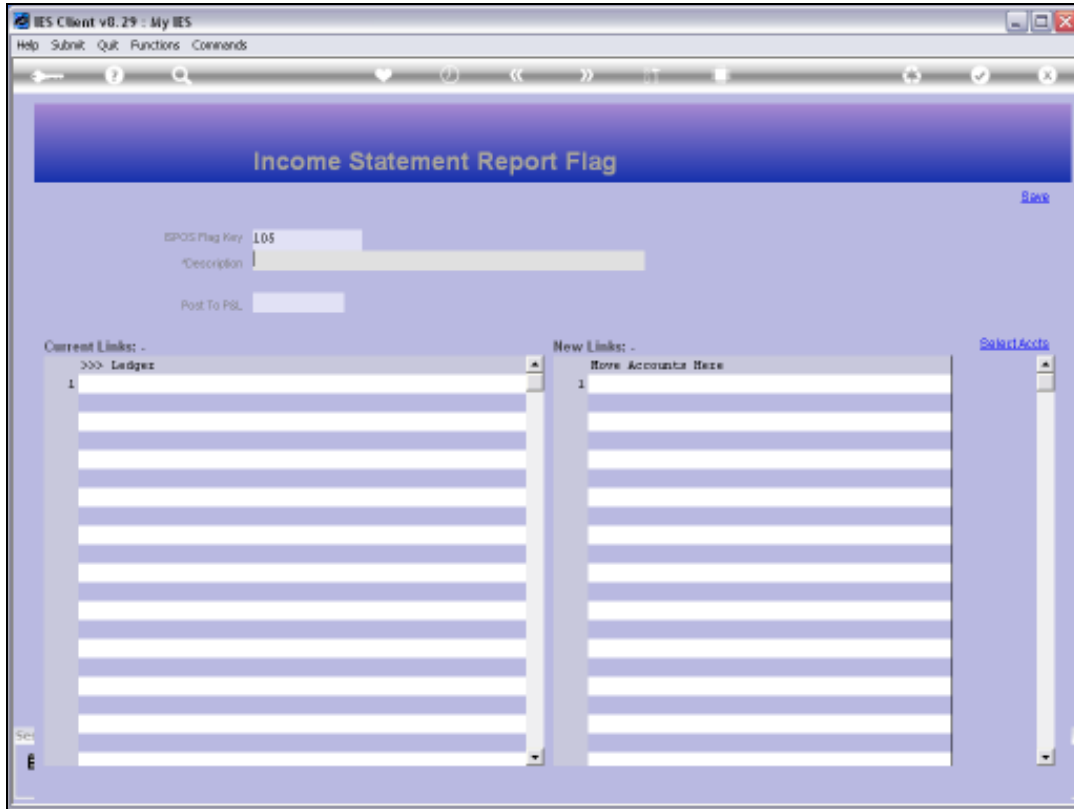


Slide 51
Slide notes:



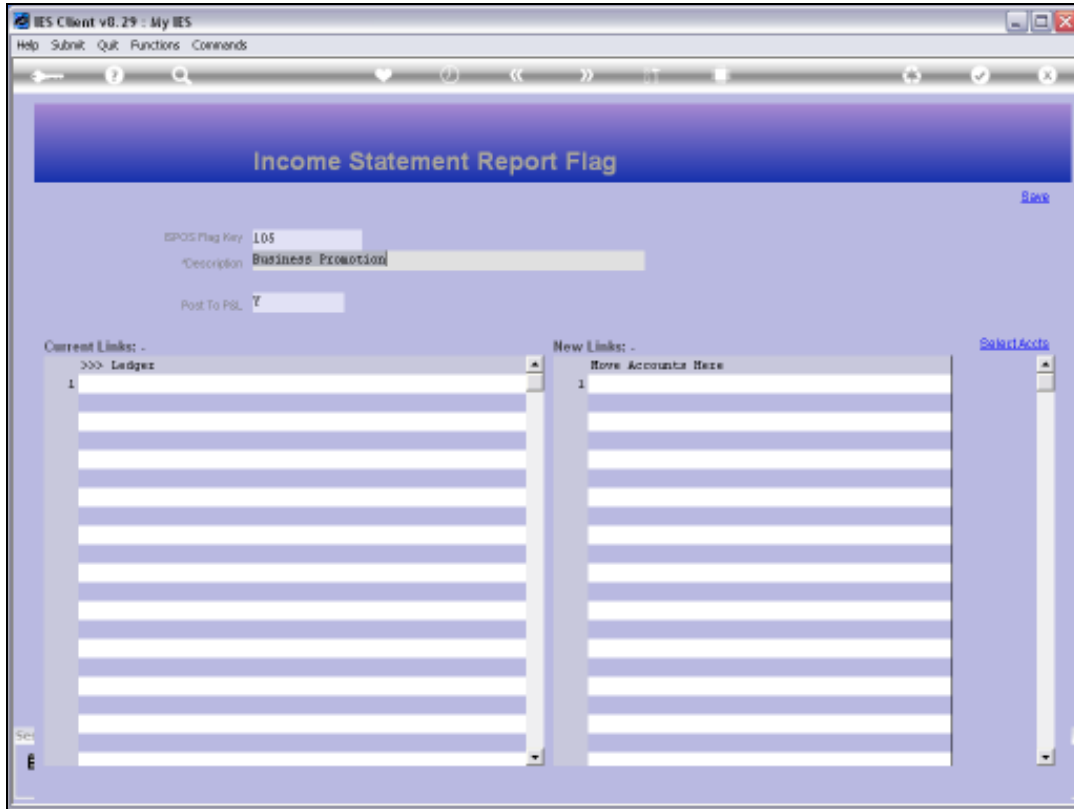
Slide 52

Slide notes:



Slide 54

Slide notes:



Slide 55

Slide notes: And this is the '105' Flag that was uploaded.