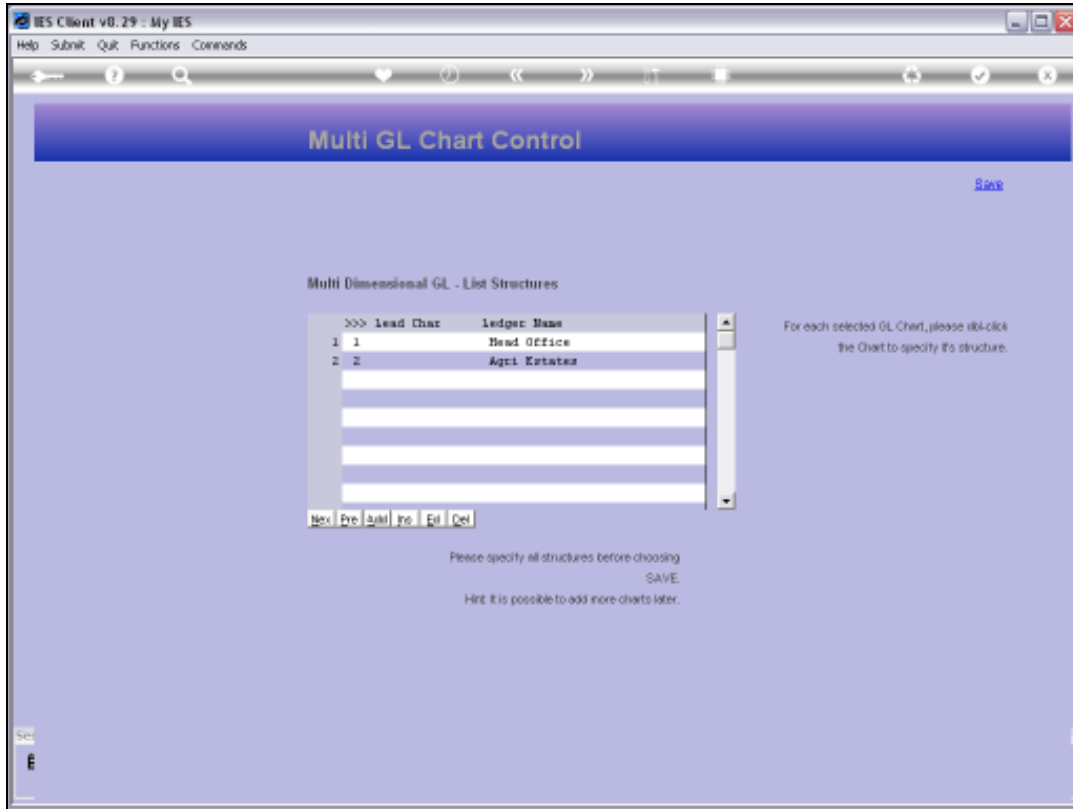


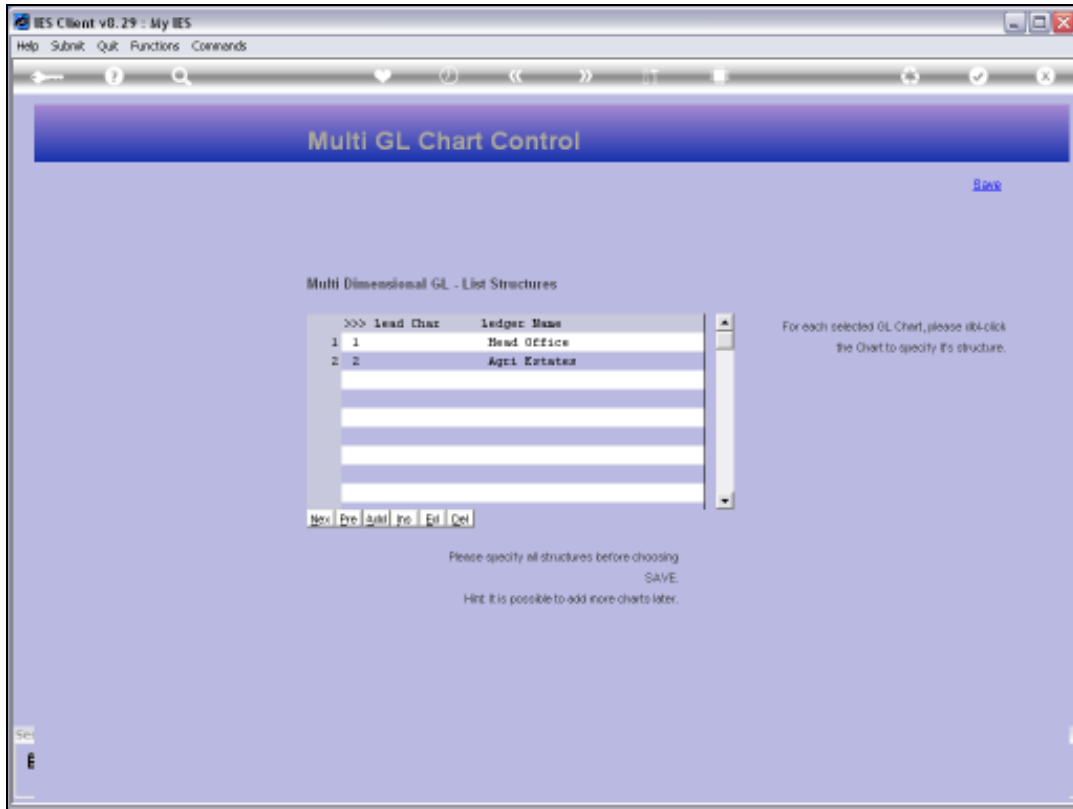


Slide 1

Slide notes: The Cost Centre segment for a Ledger Series is selected at the Chart Structure option.



Slide 2
Slide notes:



Slide 3
Slide notes:

IES Client v8.29 : My IES
Help Submit Quit Functions Comments

Account Code Primary Structure

Dept Name: [Save](#)

Dept Sub Element Names: - [Sub Element Names](#)

Choose length for each primary element.

Department: [Save](#)

Optional Element: - Digits or Extra Element: name:

Activity:

Code Length:

Start with 1 and define only the sub elements to be used on Dept (optional)

Dept Element	Element	Element
Dept Element 1	Office	Element 1,2
Dept Element 2	Estate	Element 3,8
Dept Element 3	Division	Element 5,2
Dept Element 4	Block	Element 6,2
Dept Element 5		Element
Dept Element 6		Element
Dept Element 7		Element

Slide 4
Slide notes:

Account Code Primary Structure

Dept Name: Dept Sub Element Names:

Choose length for each primary element.

Department:

Optional Element: - Digits or Extra Element: Name:

Activity:

Cost Centre:

Start with 1 and define only the sub elements to be used on Dept (optional)

Dept Segment 1:	<input type="text" value="Office"/>	Extract:	<input type="text" value="1,2"/>
Dept Segment 2:	<input type="text" value="Estote"/>	Extract:	<input type="text" value="3,8"/>
Dept Segment 3:	<input type="text" value="Dispation"/>	Extract:	<input type="text" value="5,1"/>
Dept Segment 4:	<input type="text" value="Block"/>	Extract:	<input type="text" value="6,8"/>
Dept Segment 5:	<input type="text"/>	Extract:	<input type="text"/>
Dept Segment 6:	<input type="text"/>	Extract:	<input type="text"/>
Dept Segment 7:	<input type="text"/>	Extract:	<input type="text"/>

Slide 5

Slide notes: In this Ledger, the Cost Centre segment is 5 digits long. The Cost Centre is sometimes called the Natural Account, and cannot be avoided. In other words, the segment is essential to include.

IES Client v8.29 - My IES
Help Submit Quit Functions Commands

Account Code Primary Structure

Chart Name: [Save](#)

Dept Sub Element Names:

Choose length for each primary element.

Department: [Sub Element Names](#)

Optional Element: Name:

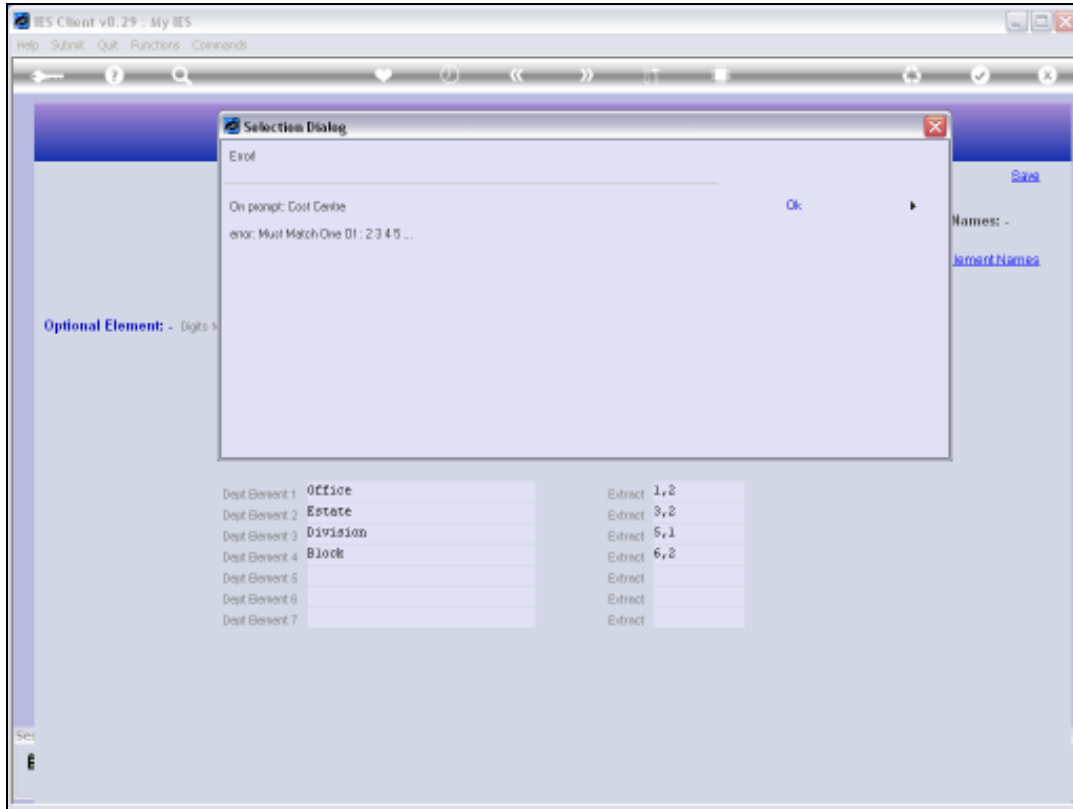
Activity:

Cost Code:

Start with 1 and define only the sub elements to be used on Dept (optional)

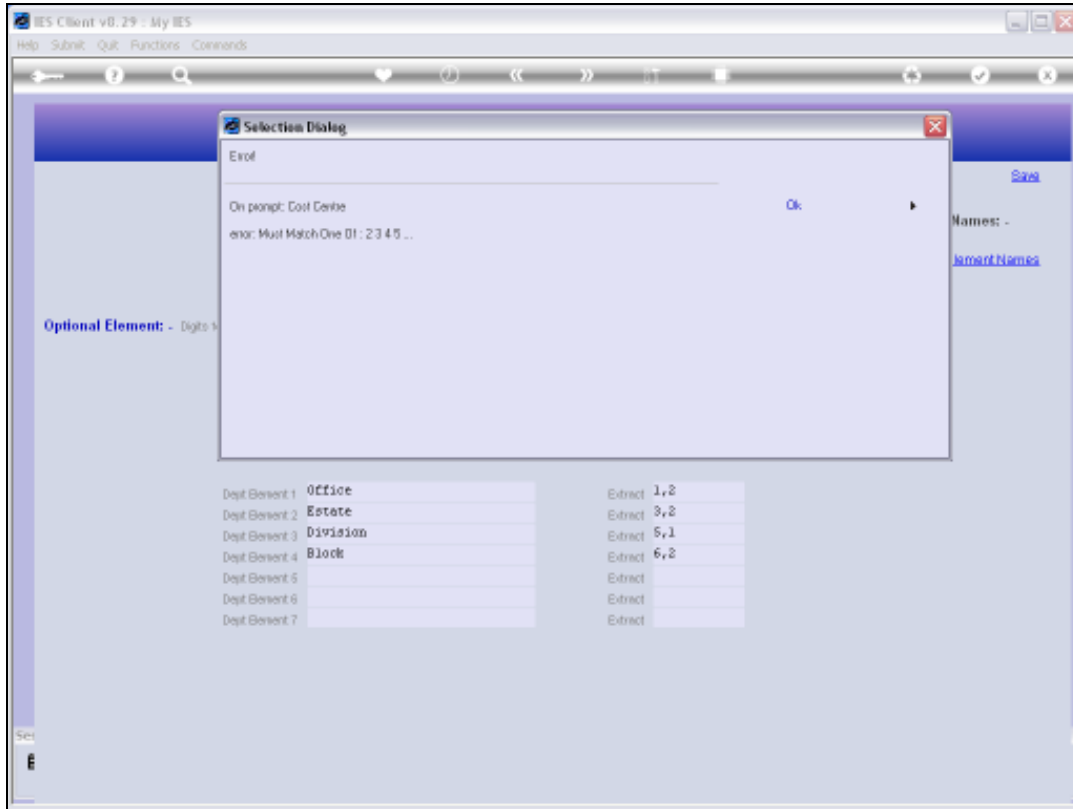
Dept Element	Value	Extract
Dept Element 1	Office	Extract 1,2
Dept Element 2	Estote	Extract 3,8
Dept Element 3	Disruption	Extract 5,1
Dept Element 4	Block	Extract 6,8
Dept Element 5		Extract
Dept Element 6		Extract
Dept Element 7		Extract

Slide 6
Slide notes:



Slide 7

Slide notes: Zero length is not possible.



Slide 8
Slide notes:

IES Client v8.29 - My IES
Help Submit Quit Functions Commands

Account Code Primary Structure

Chart Name: [Save](#)

Dept Sub Element Names: - [Sub Element Names](#)

Choose length for each primary element.

Department:

Optional Element: - Digits or Extra Element: Name:

Activity Code Length:

Start with 1 and define only the sub elements to be used on Dept (optional)

Dept Element 1:	<input type="text" value="Office"/>	Extract:	<input type="text" value="1,2"/>
Dept Element 2:	<input type="text" value="Estote"/>	Extract:	<input type="text" value="3,8"/>
Dept Element 3:	<input type="text" value="Disruption"/>	Extract:	<input type="text" value="5,1"/>
Dept Element 4:	<input type="text" value="Block"/>	Extract:	<input type="text" value="6,8"/>
Dept Element 5:	<input type="text"/>	Extract:	<input type="text"/>
Dept Element 6:	<input type="text"/>	Extract:	<input type="text"/>
Dept Element 7:	<input type="text"/>	Extract:	<input type="text"/>

Slide 9
Slide notes:

IES Client v8.29 - My IES
Help Submit Quit Functions Commands

Account Code Primary Structure

Chart Name: [Save](#)

Dept Sub Element Names: - [Sub Element Names](#)

Choose length for each primary element.

Department:

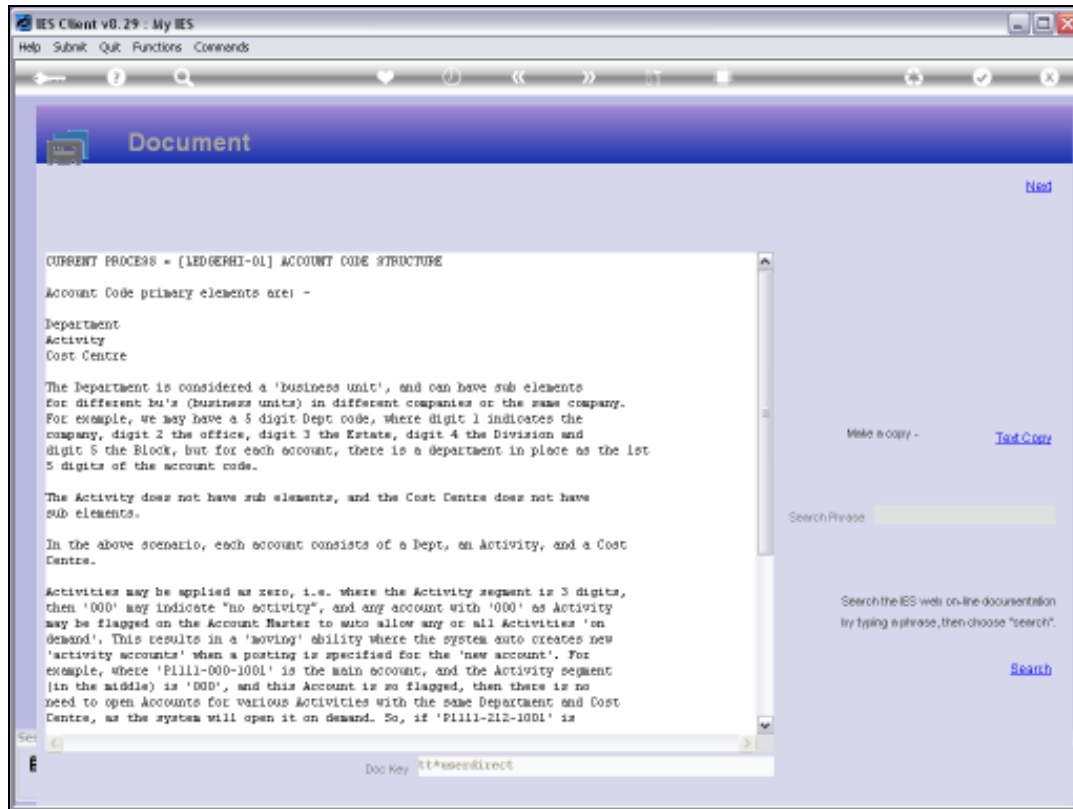
Optional Element: - Digits or Extra Element: Name:

Activity Code:

Start with 1 and define only the sub elements to be used on Dept (optional)

Dept Element 1:	<input type="text" value="Office"/>	Element:	<input type="text" value="1,2"/>
Dept Element 2:	<input type="text" value="Estete"/>	Element:	<input type="text" value="3,8"/>
Dept Element 3:	<input type="text" value="Disriation"/>	Element:	<input type="text" value="5,1"/>
Dept Element 4:	<input type="text" value="Block"/>	Element:	<input type="text" value="6,8"/>
Dept Element 5:	<input type="text"/>	Element:	<input type="text"/>
Dept Element 6:	<input type="text"/>	Element:	<input type="text"/>
Dept Element 7:	<input type="text"/>	Element:	<input type="text"/>

Slide 10
Slide notes:



Slide 11

Slide notes: The Help explains.

IES Client v8.29 - My IES
Help Submit Quit Functions Commands

Account Code Primary Structure

Chart Name: [Save](#)

Dept Sub Element Names: - [Sub Element Names](#)

Choose length for each primary element.

Department:

Optional Element: - Digits or Extra Element: Name:

Activity Code:

Start with 1 and define only the sub elements to be used on Dept (optional)

Dept Element 1:	<input type="text" value="Office"/>	Element:	<input type="text" value="1,2"/>
Dept Element 2:	<input type="text" value="Estete"/>	Element:	<input type="text" value="3,8"/>
Dept Element 3:	<input type="text" value="Disruption"/>	Element:	<input type="text" value="5,1"/>
Dept Element 4:	<input type="text" value="Block"/>	Element:	<input type="text" value="6,8"/>
Dept Element 5:	<input type="text"/>	Element:	<input type="text"/>
Dept Element 6:	<input type="text"/>	Element:	<input type="text"/>
Dept Element 7:	<input type="text"/>	Element:	<input type="text"/>

Slide 12
Slide notes:

IES Client v8.29 - My IES
Help Submit Quit Functions Commands

Account Code Primary Structure

Save

Dept Name:

Dept Sub Element Names: -

Sub Element Names

Choose length for each primary element.

Department:

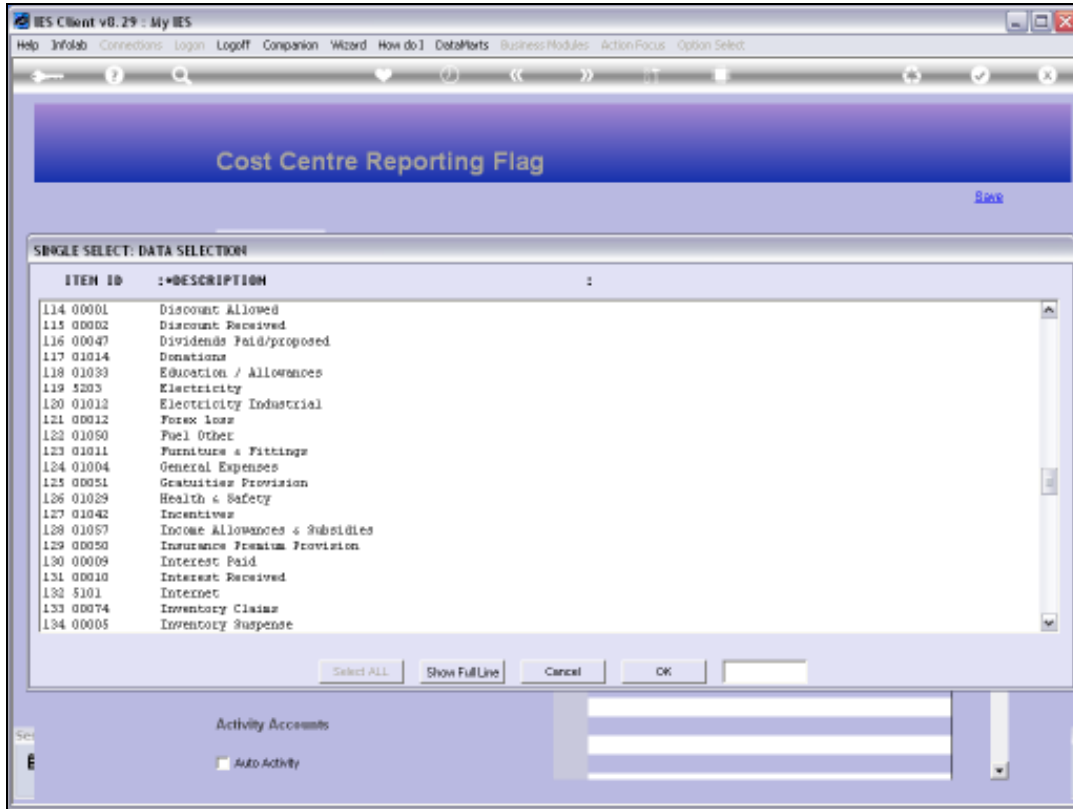
Optional Element: - Digits or Extra Element: Name:

Activity Code:

Start with 1 and define only the sub elements to be used on Dept (optional)

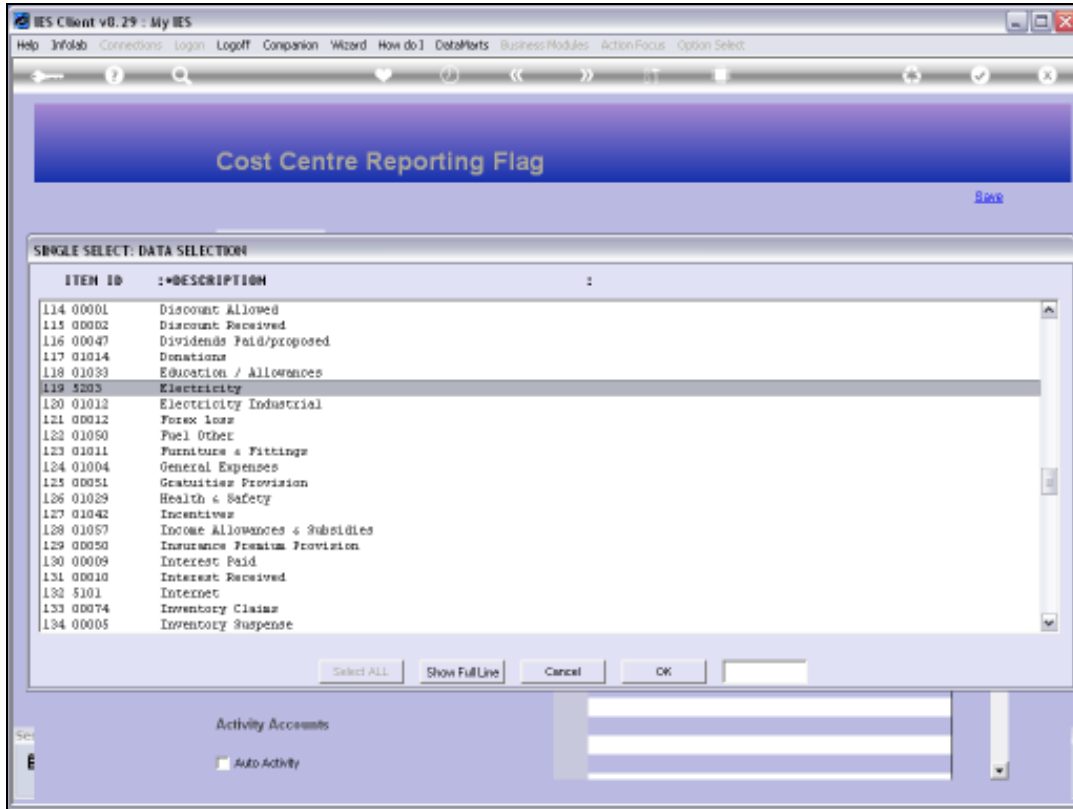
Dept Element	Extract
Dept Element 1: <input type="text" value="Office"/>	Extract: <input type="text" value="1,2"/>
Dept Element 2: <input type="text" value="Estote"/>	Extract: <input type="text" value="3,8"/>
Dept Element 3: <input type="text" value="Disruption"/>	Extract: <input type="text" value="5,1"/>
Dept Element 4: <input type="text" value="Block"/>	Extract: <input type="text" value="6,8"/>
Dept Element 5: <input type="text"/>	Extract: <input type="text"/>
Dept Element 6: <input type="text"/>	Extract: <input type="text"/>
Dept Element 7: <input type="text"/>	Extract: <input type="text"/>

Slide 13
Slide notes:



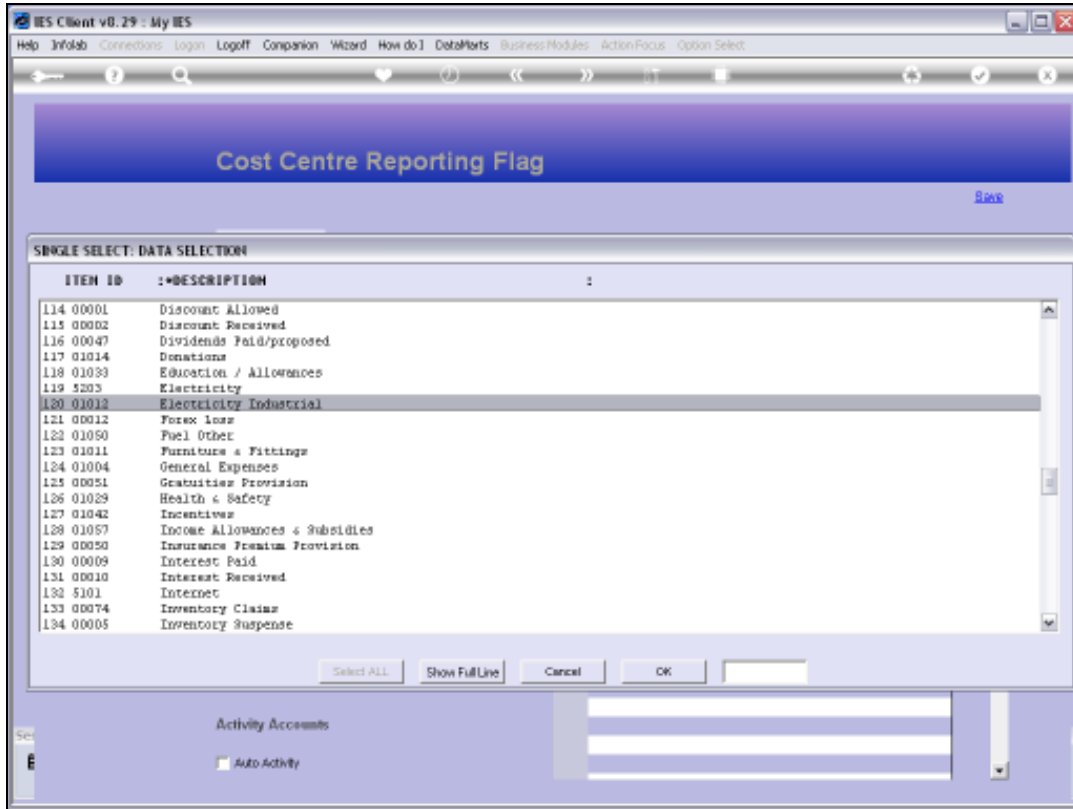
Slide 14

Slide notes: Here is an example of a lookup of Cost Centres in a Company with more than 1 Ledger, and where there are 2 sets of Cost Centres. Some Cost Centres are 4 digits and others are 5 digits long.



Slide 15

Slide notes: We will always choose a length for the Cost Centre segment that is sufficient for the maximum number of Cost Centres we will ever have in a Ledger.



Slide 16
Slide notes: