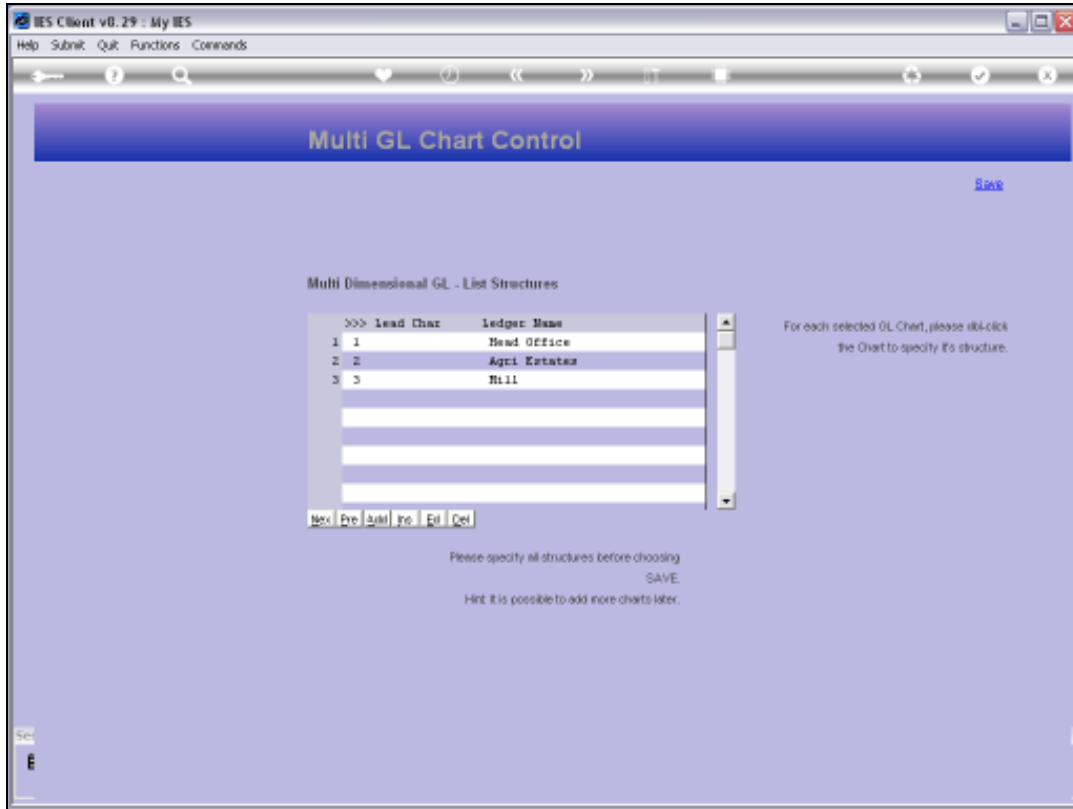


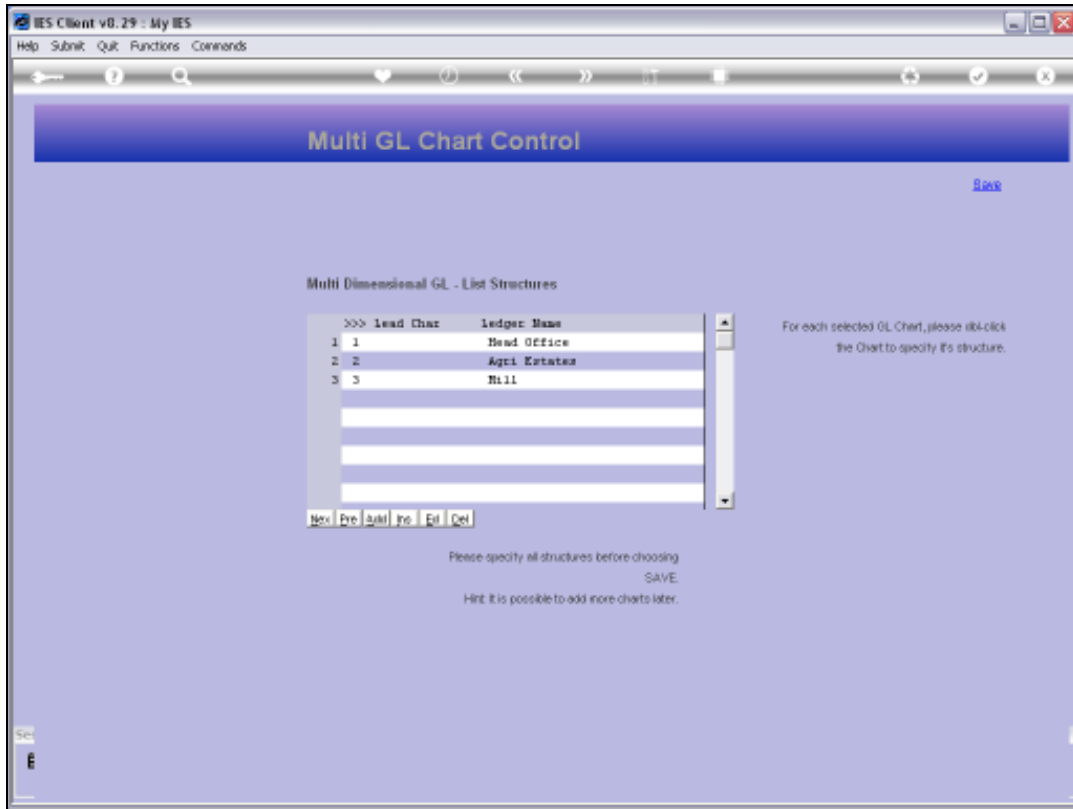


Slide 1

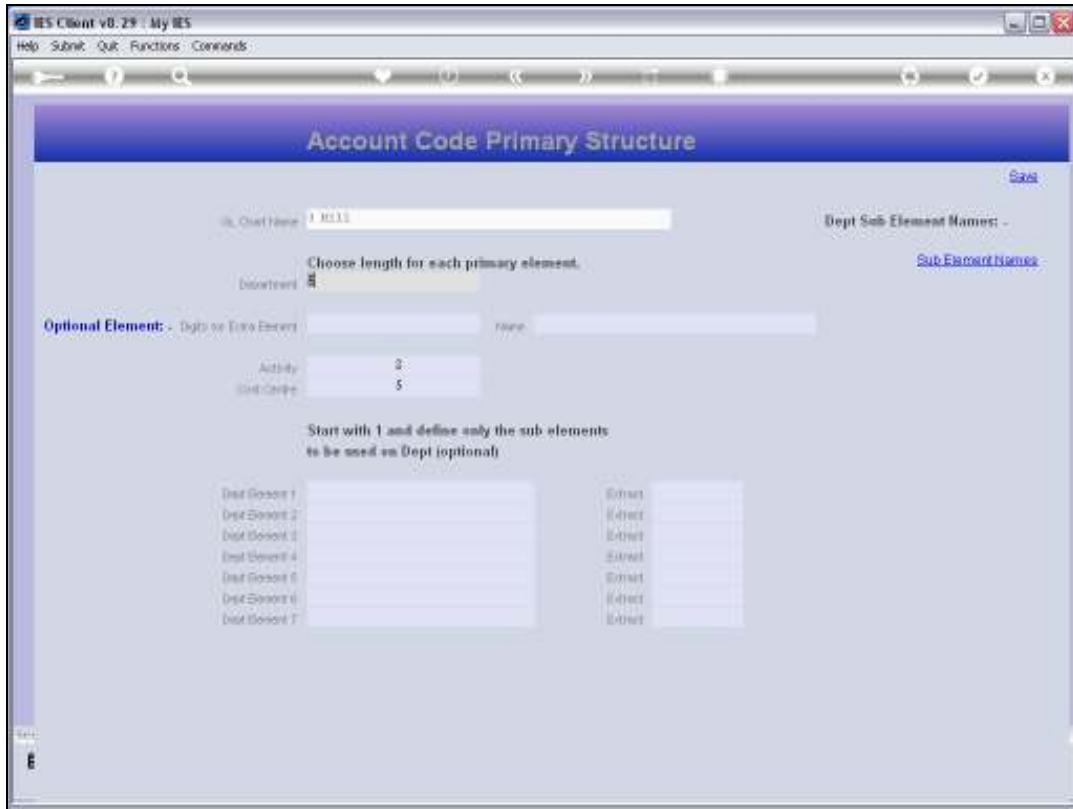
Slide notes: At the Chart Structure, we have the choice of using the Optional Segment or not using it.



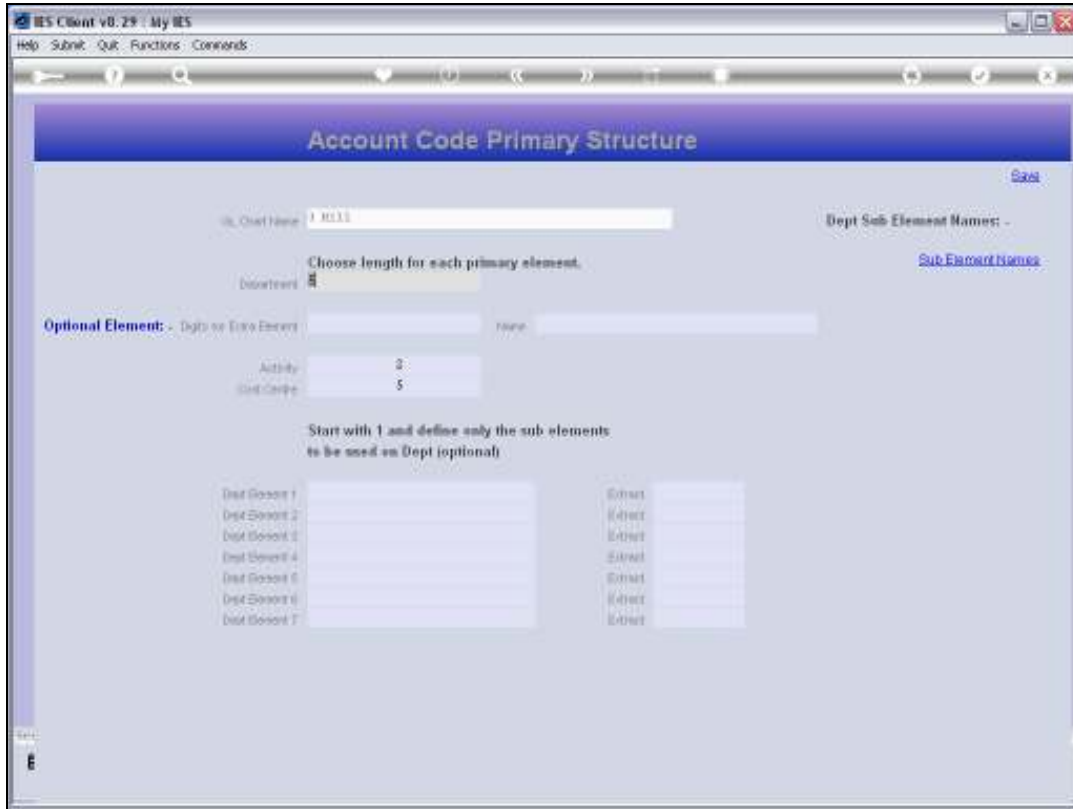
Slide 2
Slide notes:



Slide 3
Slide notes:



Slide 4
Slide notes:



Slide 5

Slide notes: In the Mill Ledger we are not using the optional segment.

IES Client v8.29 : My IES
Help Submit Quit Functions Commands

Account Code Primary Structure

Chart Name: 10111 Dept Sub Element Name: -

Choose length for each primary element.

Department: 5

Optional Element: - Digits or Extra Element: none

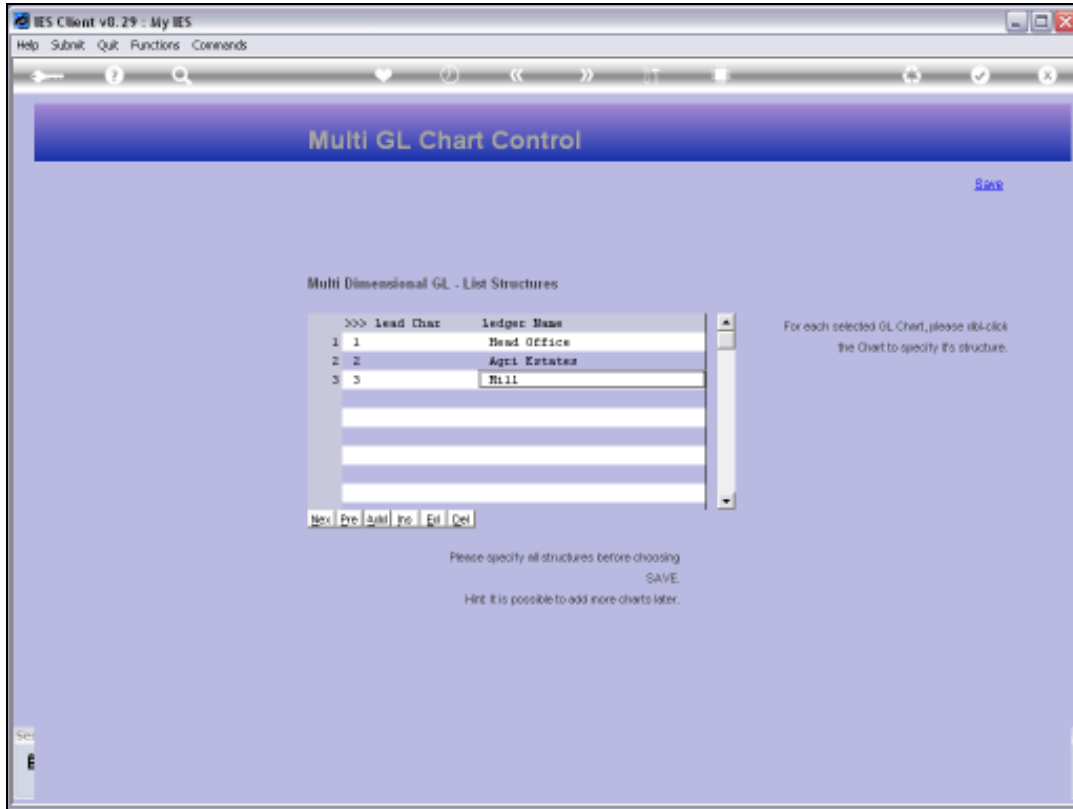
Activity: 2

Fund Code: 5

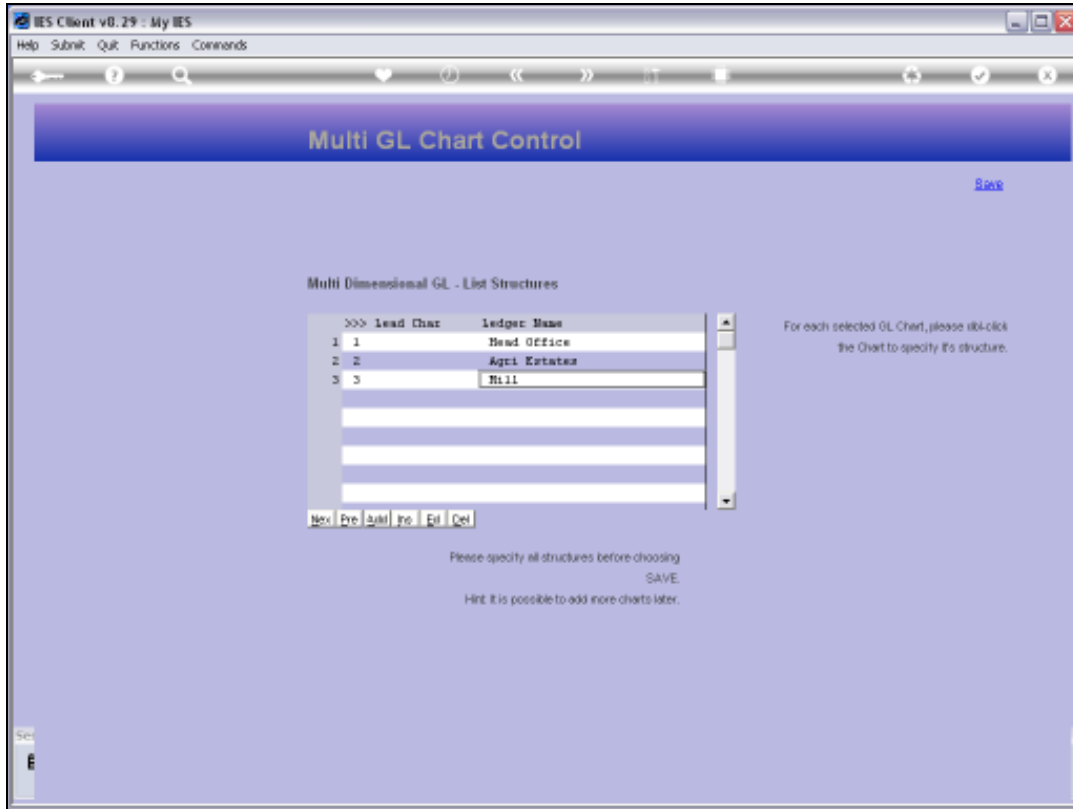
Start with 1 and define only the sub elements to be used on Dept (optional)

Dept Element	Extract
Dept Element 1	Extract
Dept Element 2	Extract
Dept Element 3	Extract
Dept Element 4	Extract
Dept Element 5	Extract
Dept Element 6	Extract
Dept Element 7	Extract

Slide 6
Slide notes:



Slide 7
Slide notes:



Slide 8
Slide notes:

IES Client v8.29 - My IES
Help Submit Quit Functions Commands

Account Code Primary Structure

Chart Name: Dept Sub Element Names:

Choose length for each primary element.

Department:

Optional Element: - Digits or Extra Element: Name:

Activity:

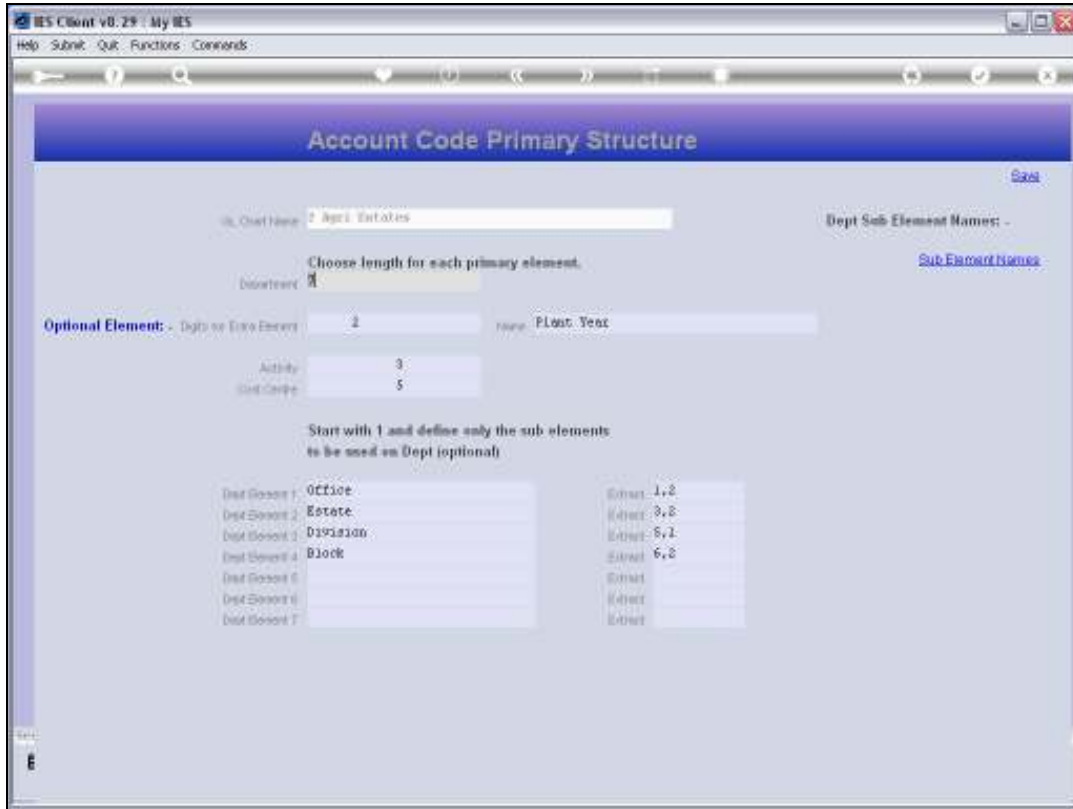
Code Length:

Start with 1 and define only the sub elements to be used on Dept (optional)

Dept Element 1:	<input type="text" value="Office"/>	Extract:	<input type="text" value="1,2"/>
Dept Element 2:	<input type="text" value="Estete"/>	Extract:	<input type="text" value="3,8"/>
Dept Element 3:	<input type="text" value="Disriation"/>	Extract:	<input type="text" value="5,1"/>
Dept Element 4:	<input type="text" value="Block"/>	Extract:	<input type="text" value="6,8"/>
Dept Element 5:	<input type="text"/>	Extract:	<input type="text"/>
Dept Element 6:	<input type="text"/>	Extract:	<input type="text"/>
Dept Element 7:	<input type="text"/>	Extract:	<input type="text"/>

Save

Slide 9
Slide notes:



Slide 10

Slide notes: In the Estates Ledger, the optional segment is used for the Plant Year.

IES Client v8.29 - My IES
Help Submit Quit Functions Commands

Account Code Primary Structure

Chart Name: Dept Sub Element Names: -

Choose length for each primary element.
Department: [Sub Element Names](#)

Optional Element: - Dept or Extra Element name:

Activity:
Cost Code:

Start with 1 and define only the sub elements to be used on Dept (optional)

Dept Element 1:	<input type="text" value="Office"/>	Extract:	<input type="text" value="1,2"/>
Dept Element 2:	<input type="text" value="Estate"/>	Extract:	<input type="text" value="3,8"/>
Dept Element 3:	<input type="text" value="Disruption"/>	Extract:	<input type="text" value="5,1"/>
Dept Element 4:	<input type="text" value="Block"/>	Extract:	<input type="text" value="6,8"/>
Dept Element 5:	<input type="text"/>	Extract:	<input type="text"/>
Dept Element 6:	<input type="text"/>	Extract:	<input type="text"/>
Dept Element 7:	<input type="text"/>	Extract:	<input type="text"/>

Slide 11
Slide notes:

IES Client v8.29 - My IES
Help Submit Quit Functions Commands

Account Code Primary Structure

Chart Name: [Save](#)

Dept Sub Element Names: [Sub Element Names](#)

Choose length for each primary element.

Department:

Optional Element: Digits or Extra Element Name:

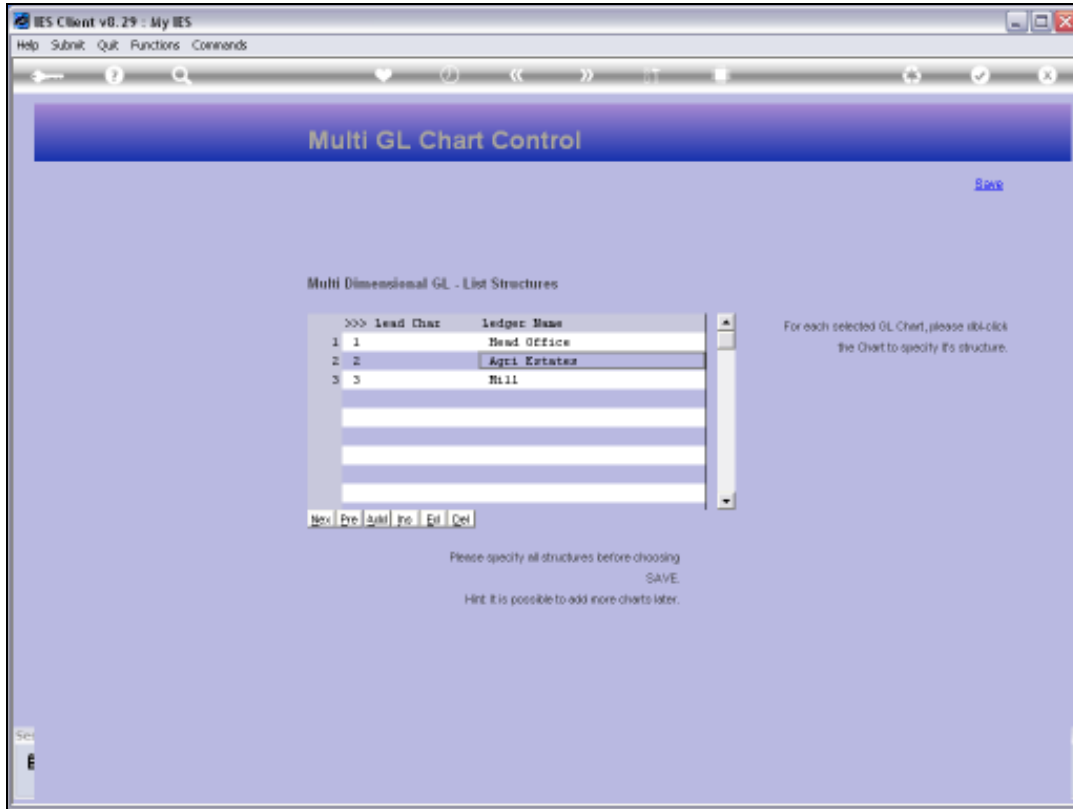
Activity:

Cost Code:

Start with 1 and define only the sub elements to be used on Dept (optional)

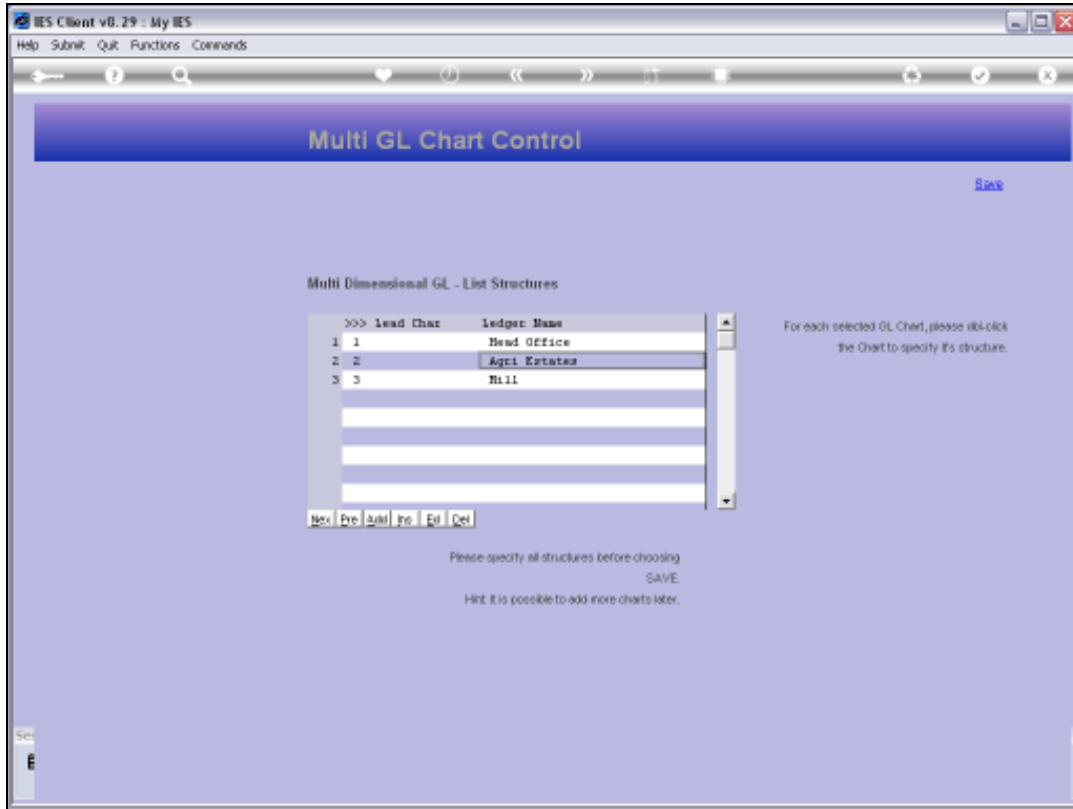
Dept Element 1:	<input type="text" value="Office"/>	Extract:	<input type="text" value="1,2"/>
Dept Element 2:	<input type="text" value="Estote"/>	Extract:	<input type="text" value="3,8"/>
Dept Element 3:	<input type="text" value="Disruption"/>	Extract:	<input type="text" value="5,1"/>
Dept Element 4:	<input type="text" value="Block"/>	Extract:	<input type="text" value="6,8"/>
Dept Element 5:	<input type="text"/>	Extract:	<input type="text"/>
Dept Element 6:	<input type="text"/>	Extract:	<input type="text"/>
Dept Element 7:	<input type="text"/>	Extract:	<input type="text"/>

Slide 12
Slide notes:



Slide 13

Slide notes:

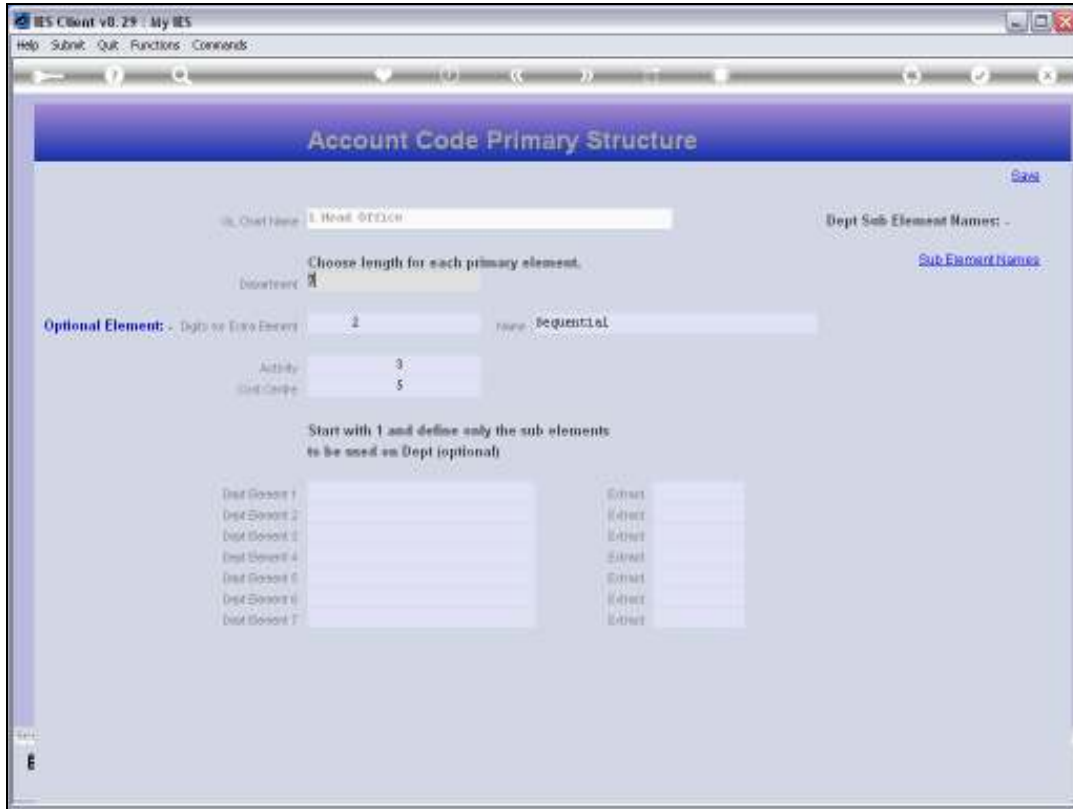


Slide 14
Slide notes:

The screenshot shows the 'Account Code Primary Structure' configuration window in the IES Client v8.29. The window title is 'My IES' and it has a menu bar with 'Help', 'Submit', 'Quit', 'Functions', and 'Commands'. Below the menu bar is a toolbar with navigation icons. The main content area has a blue header with the title 'Account Code Primary Structure' and a 'Save' button on the right. The form contains the following elements:

- Dept Name:** A text input field containing 'L Head OFFICE'.
- Dept Sub Element Names:** A text input field containing '-'. A blue link 'Sub Element Names' is located to the right.
- Choose length for each primary element:** A section with a 'Department' dropdown set to 'A'.
- Optional Element:** A section with 'Digits or Extra Element' set to '2' and 'Name' set to 'sequential'. Below this are 'Activity' (set to '3') and 'Code Length' (set to '5') dropdowns.
- Start with 1 and define only the sub elements to be used on Dept (optional):** A section with two columns of input fields. The left column is labeled 'Dept Element' and contains 7 rows with values '1' through '7'. The right column is labeled 'Extract' and contains 7 rows with the value 'Extract'.

Slide 15
Slide notes:



Slide 16

Slide notes: In the Head Office Ledger, the optional element is used as a counter, which is often quite useful in the Private or Corporate Ledgers.

IES Client v8.29 - My IES
Help Submit Quit Functions Commands

Account Code Primary Structure

Chart Name: Dept Sub Element Name: -

Choose length for each primary element.
Department: [Sub Element Names](#)

Optional Element: - Digits to Extra Element: Name:

Activity:
Cost Code:

Start with 1 and define only the sub elements to be used on Dept (optional)

Dept Element	Extract
Dept Element 1	Extract
Dept Element 2	Extract
Dept Element 3	Extract
Dept Element 4	Extract
Dept Element 5	Extract
Dept Element 6	Extract
Dept Element 7	Extract

Save

Slide 17
Slide notes:

IES Client v8.29 : My IES
Help Submit Quit Functions Commands

Account Code Primary Structure

Save

Dept Name:

Dept Sub Element Names: -

Choose length for each primary element.

Department:

Optional Element: - Digits or Extra Element: Name:

Activity:

Code Length:

Start with 1 and define only the sub elements to be used on Dept (optional)

Dept Element	Extract
Dept Element 1	Extract
Dept Element 2	Extract
Dept Element 3	Extract
Dept Element 4	Extract
Dept Element 5	Extract
Dept Element 6	Extract
Dept Element 7	Extract

Slide 18
Slide notes:



Cost Centre

B100-00-000-57001 Bank, National 6565656

B100-01-000-57001 Bank, Supra 545132224

B100-02-000-57001 Bank, The Union 92446888

B100-03-000-57001 Bank, Standard 100045443

B100-04-000-57001 Bank, National 77723542

Only the 'Optional Segment', used as a Counter, changes for multiples of the same Account in the same Cost Centre ...

infolab

Slide 5

Slide notes: Here is a good example of how the Segment is profitably used as a Counter. In the Head Office Ledger, we may typically find some Accounts of which there are multiples for the same Department, Activity and Cost Centre. In this case, the extra Segment used as counter is useful in that it allows us to just increment a digit in the counter, and that way we can have multiples of the same Account for the same Department, Activity and Cost Centre.