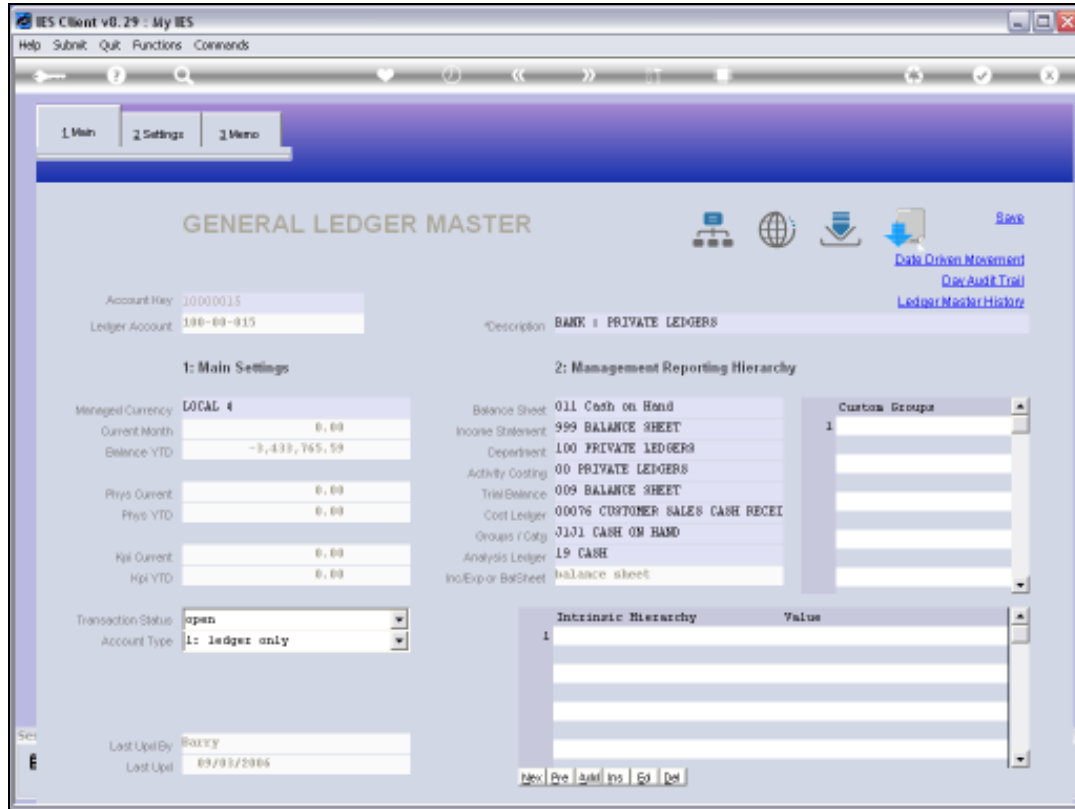
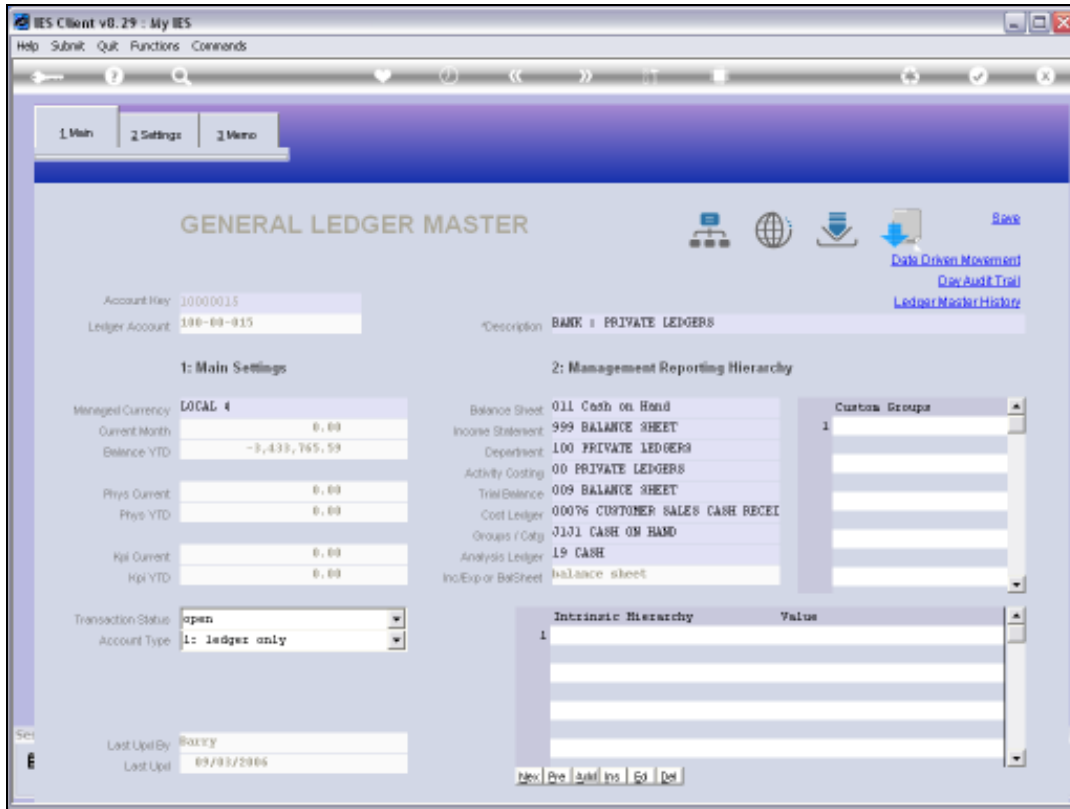


Slide 1

Slide notes: This is an example of a General Ledger Account in IES. There is a native Account Code, which is masked and displayed in a readable format.

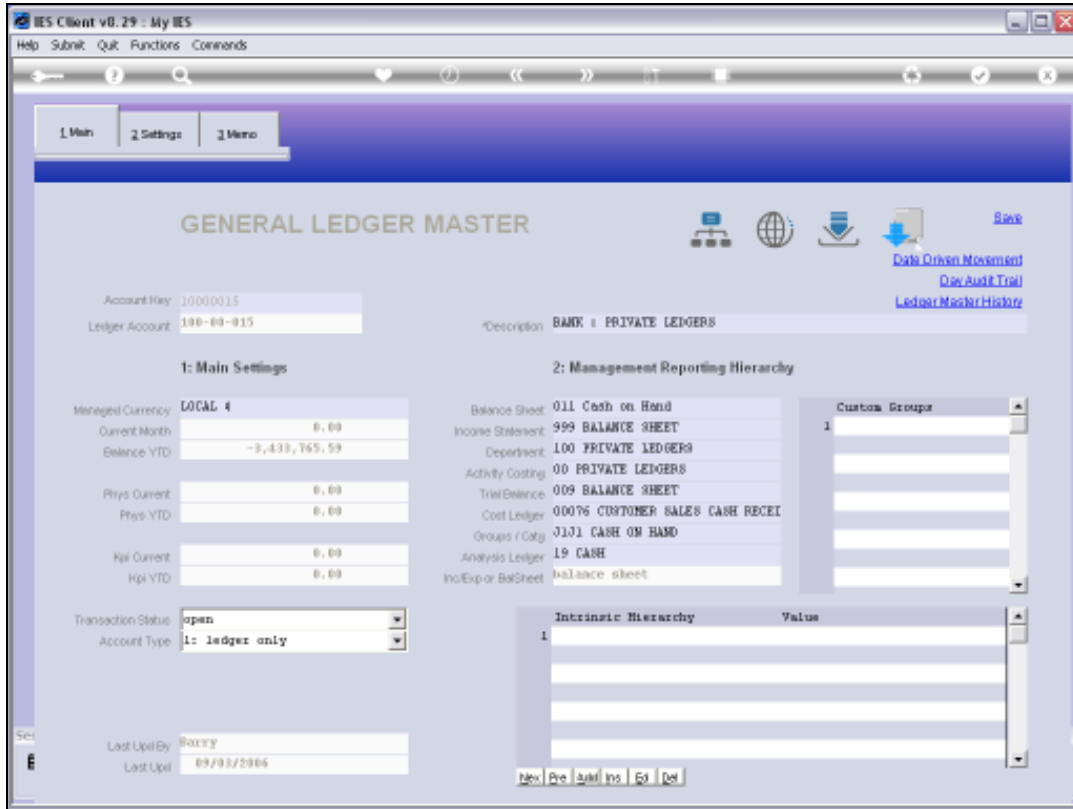


Slide 2  
Slide notes:

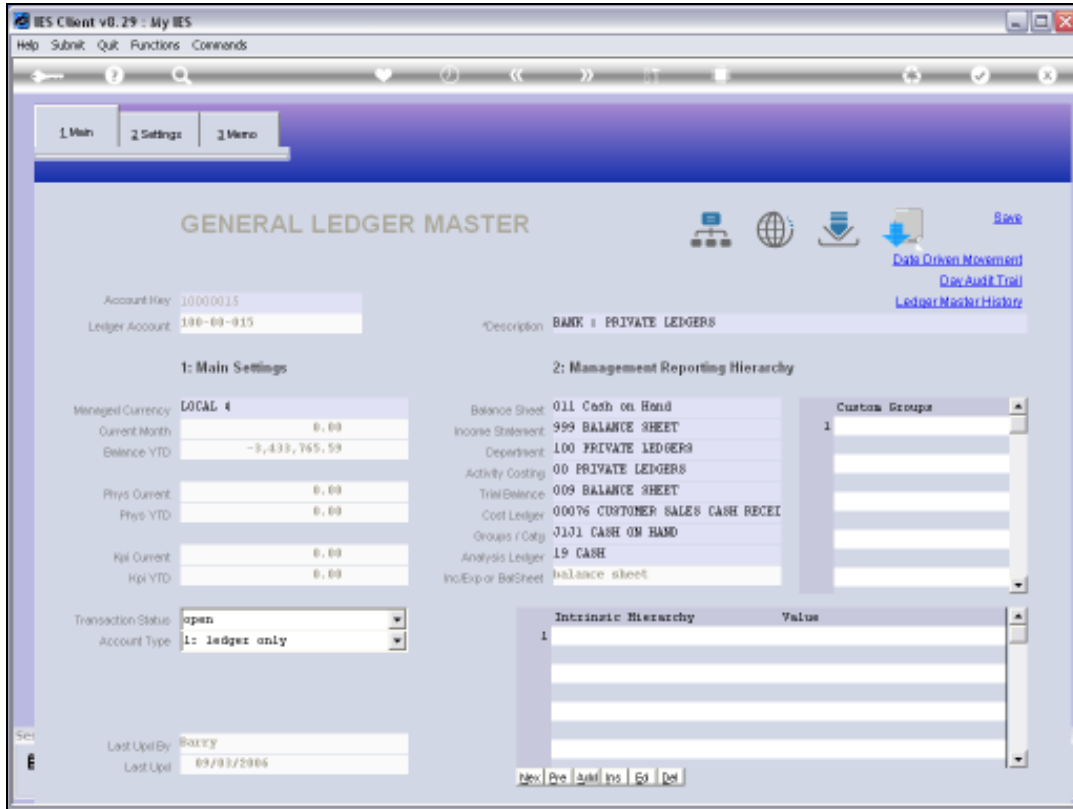


Slide 3

Slide notes: Each Account includes a set of Report Flags that are most useful in categorizing and selecting GL Accounts, and these Report Flags are independent of the Account Code, i.e. can be changed to Values that do not have to be represented in the Account Code.



Slide 4  
Slide notes:



Slide 5  
Slide notes: