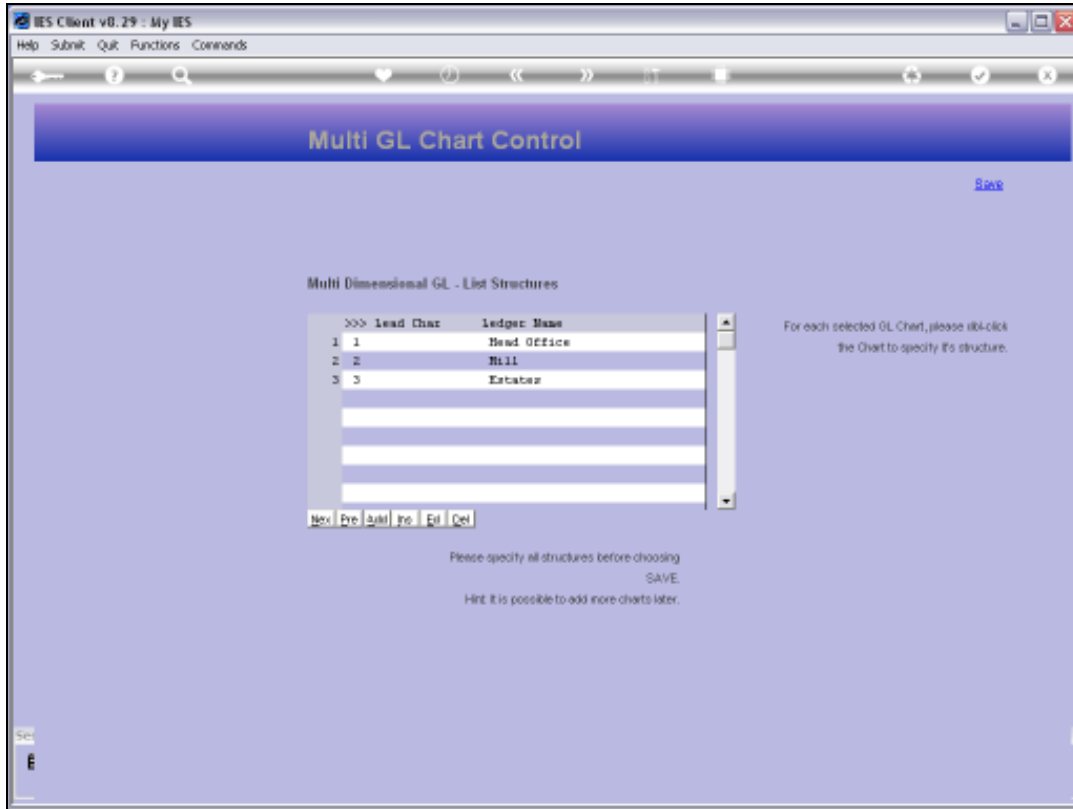


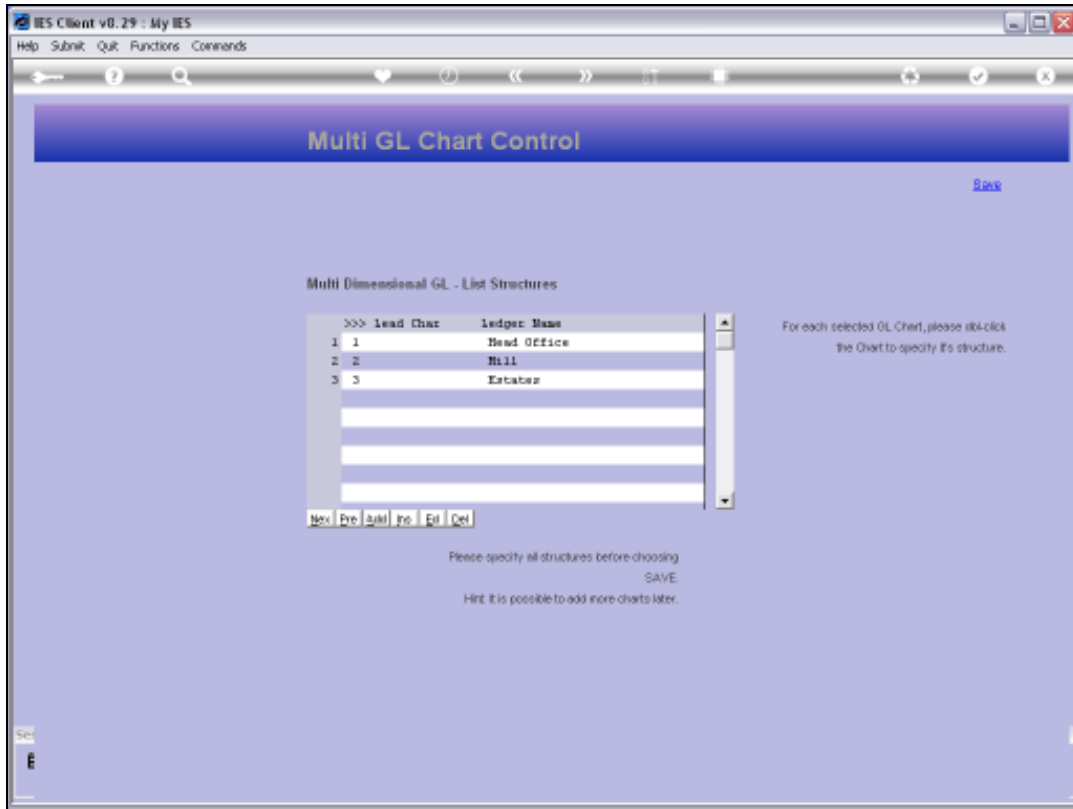


Slide 1

Slide notes: In the Chart structure, we may use Names for sub elements on the Department segment.



Slide 2
Slide notes:



Slide 3
Slide notes:

IES Client v8.29 : My IES
Help Submit Quit Functions Comments

Account Code Primary Structure [Save](#)

Chart Name: Dept Sub Element Name: -

Choose length for each primary element.
Department: [Sub Element Names](#)

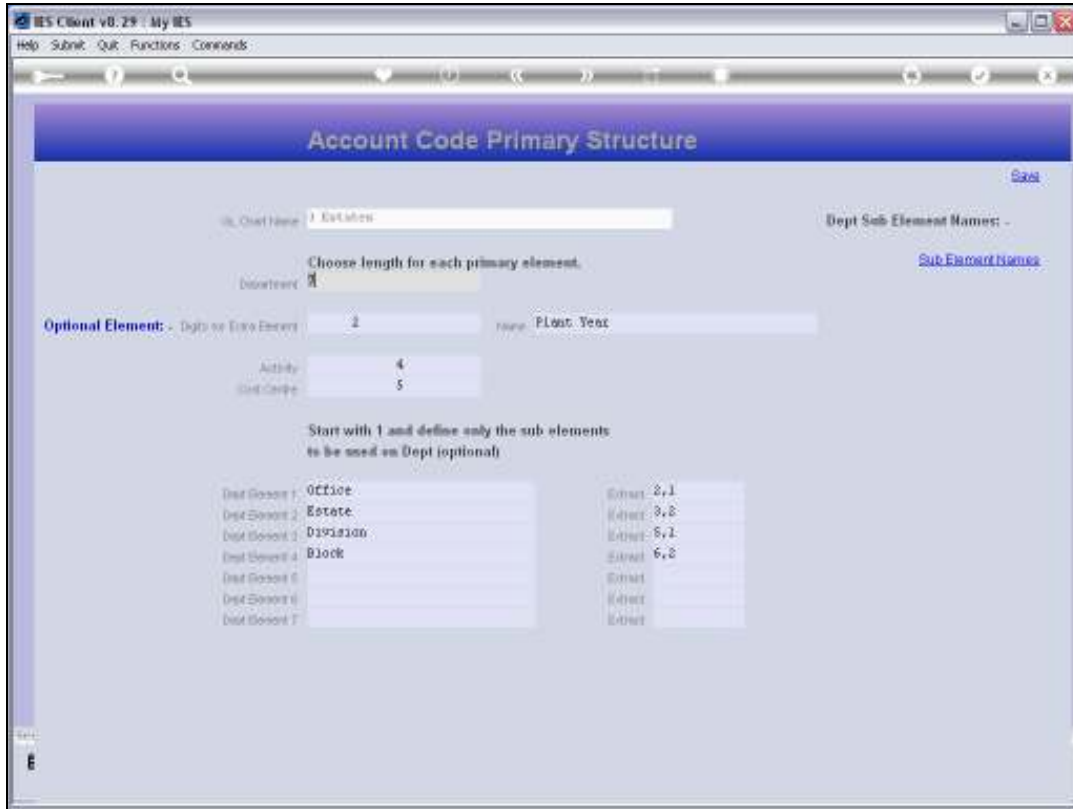
Optional Element: - Digits or Extra Element: name:

Activity:
Cost Code:

Start with 1 and define only the sub elements to be used on Dept (optional)

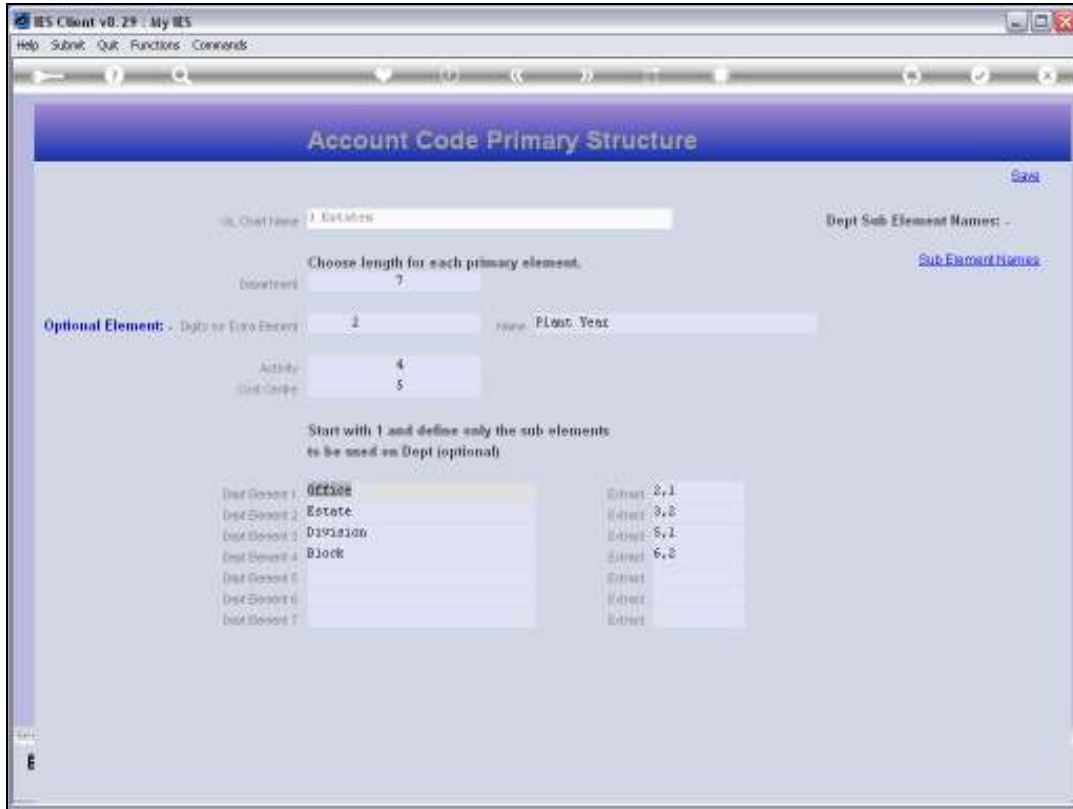
Dept Element 1:	<input type="text" value="Office"/>	Element:	<input type="text" value="2,1"/>
Dept Element 2:	<input type="text" value="Estate"/>	Element:	<input type="text" value="3,2"/>
Dept Element 3:	<input type="text" value="Division"/>	Element:	<input type="text" value="5,1"/>
Dept Element 4:	<input type="text" value="Block"/>	Element:	<input type="text" value="6,2"/>
Dept Element 5:	<input type="text"/>	Element:	<input type="text"/>
Dept Element 6:	<input type="text"/>	Element:	<input type="text"/>
Dept Element 7:	<input type="text"/>	Element:	<input type="text"/>

Slide 4
Slide notes:

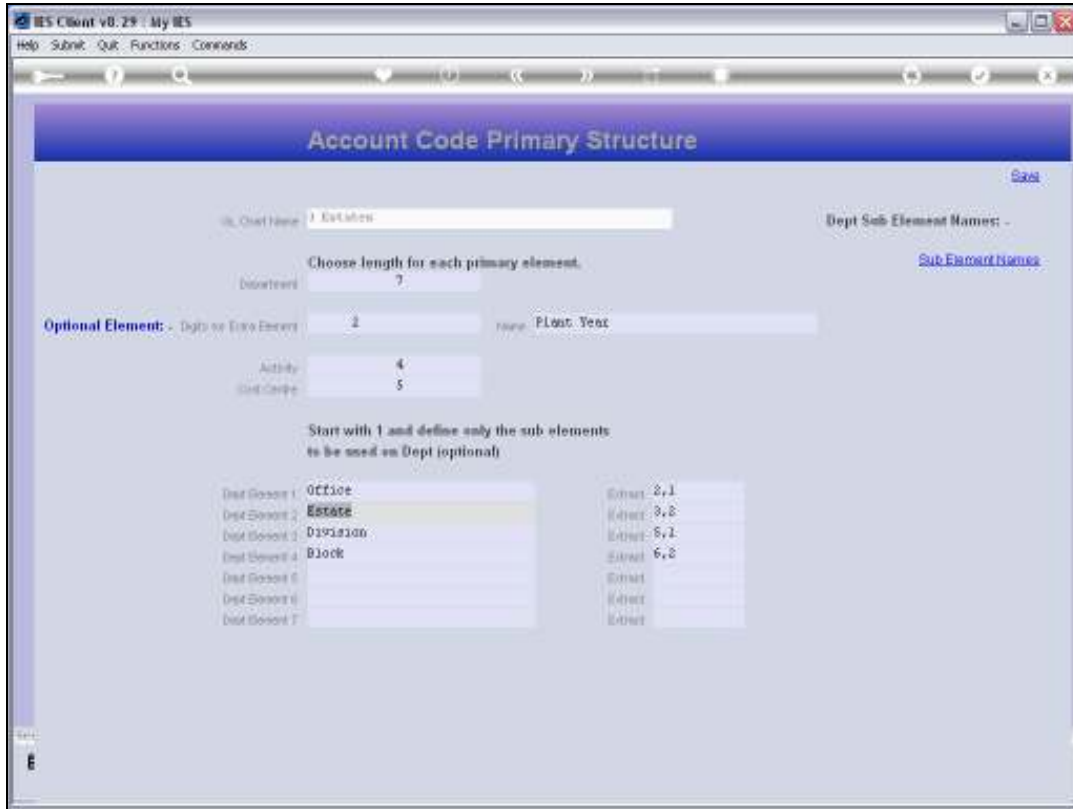


Slide 5

Slide notes: In this example, the Department includes 4 sub elements, and we may name the different Values, because it will assist the User when performing Lookups on GL Account Codes, by the structure method.



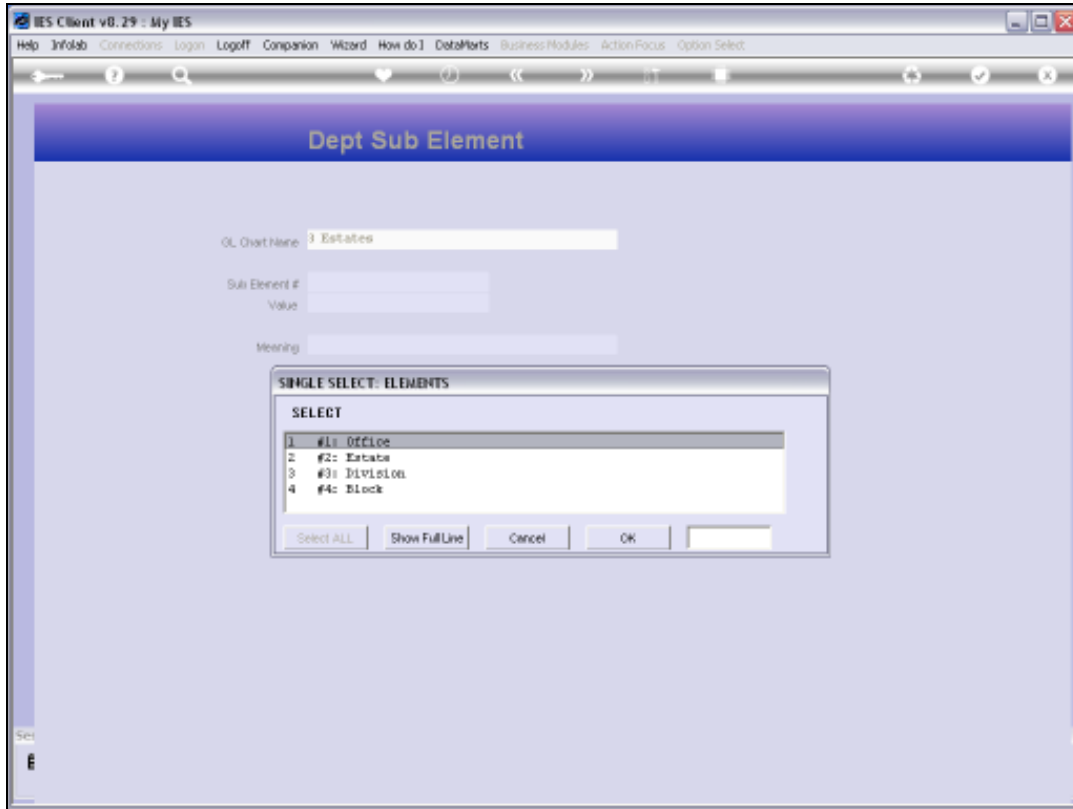
Slide 6
Slide notes:



Slide 7
Slide notes:

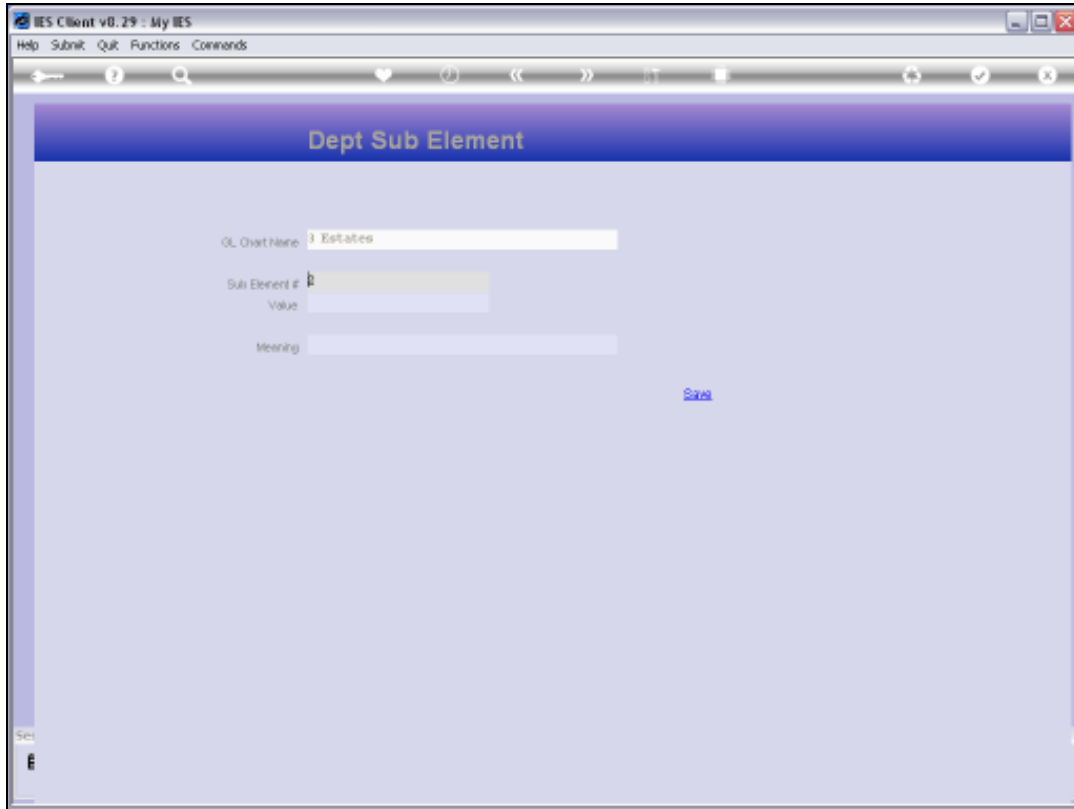


Slide 8
Slide notes:



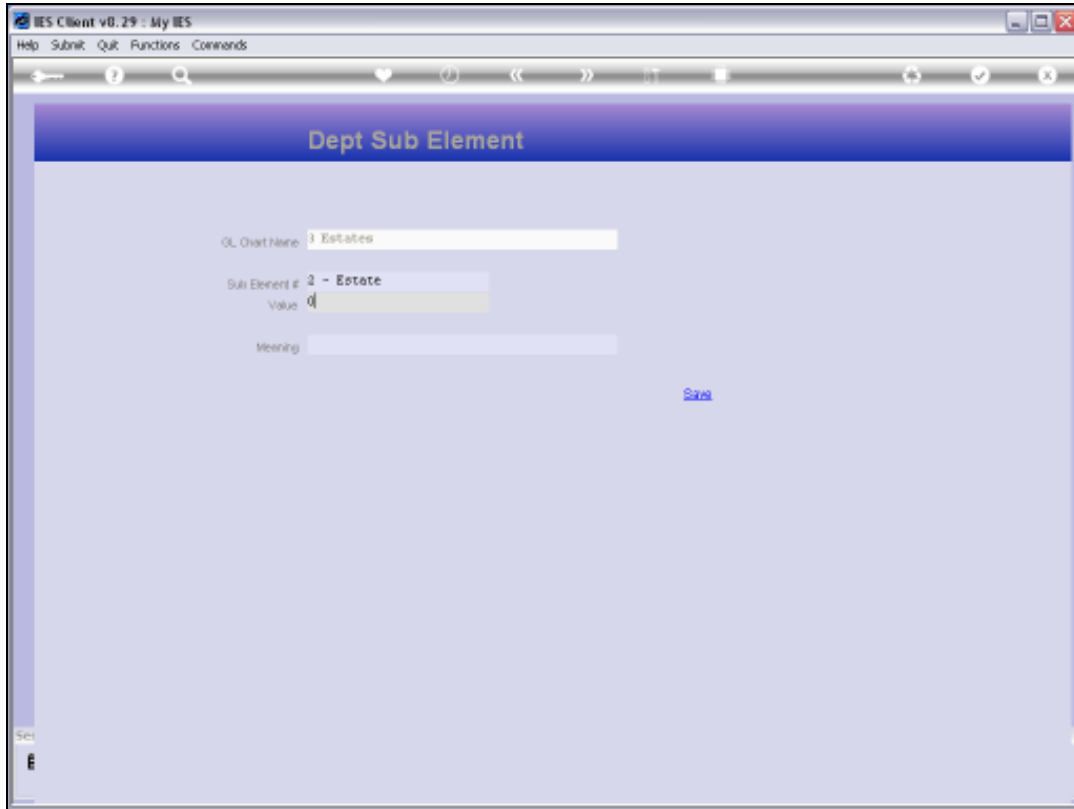
Slide 9

Slide notes: For each Element Name that we choose to state, we can select the Element first, and then state the Value and Meaning.



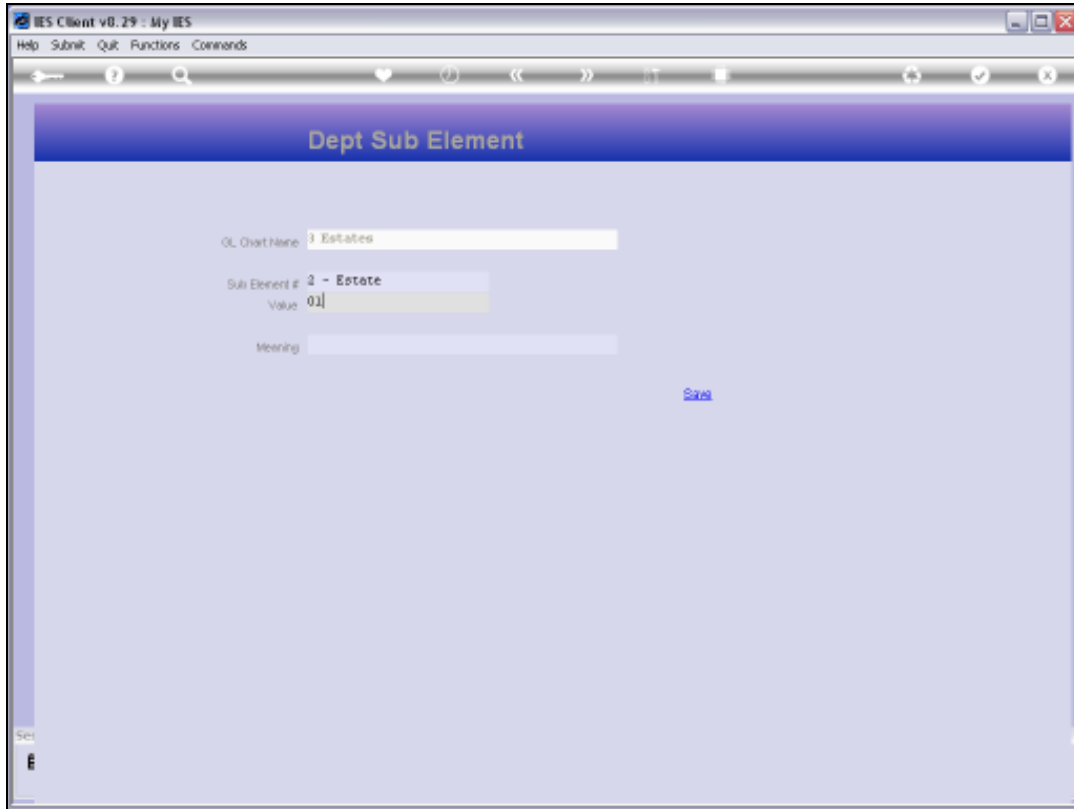
Slide 10

Slide notes:



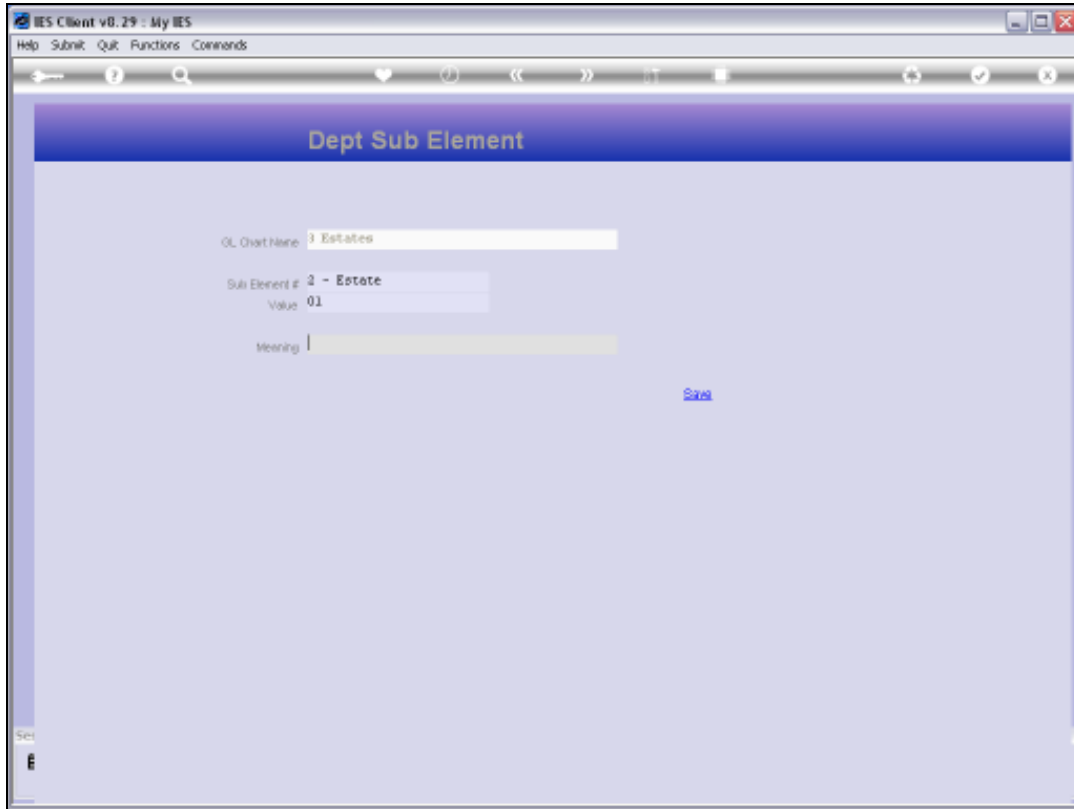
Slide 11

Slide notes:



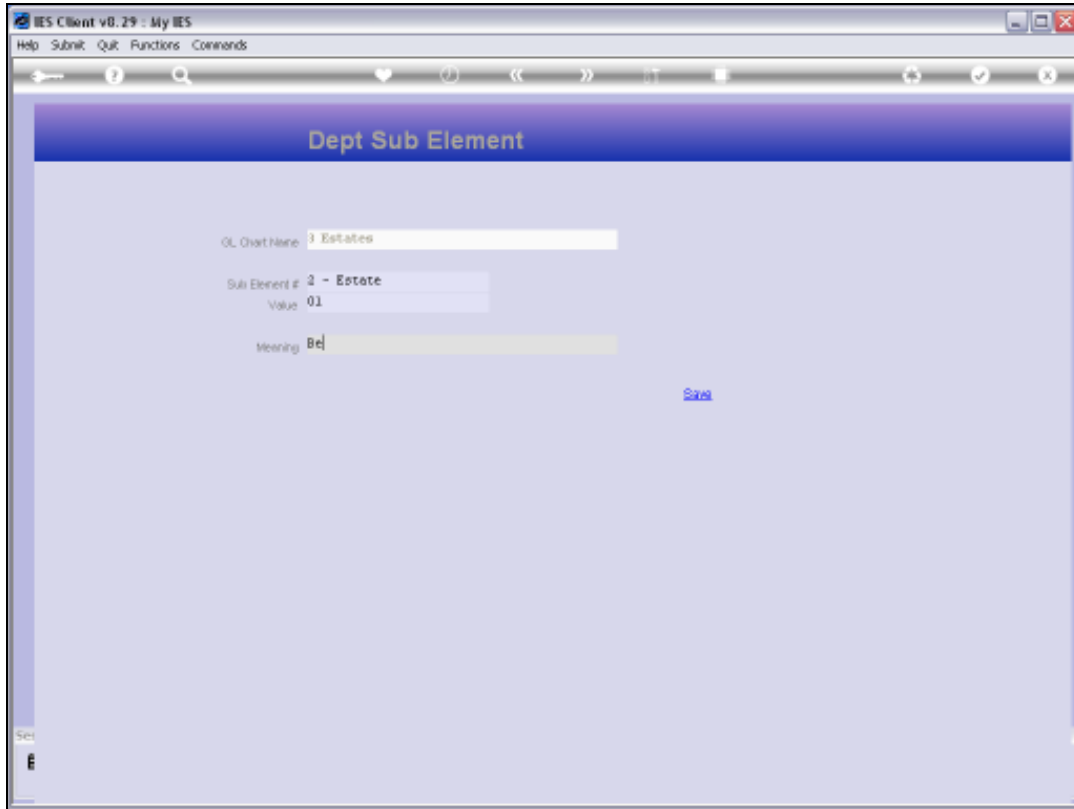
Slide 12

Slide notes:



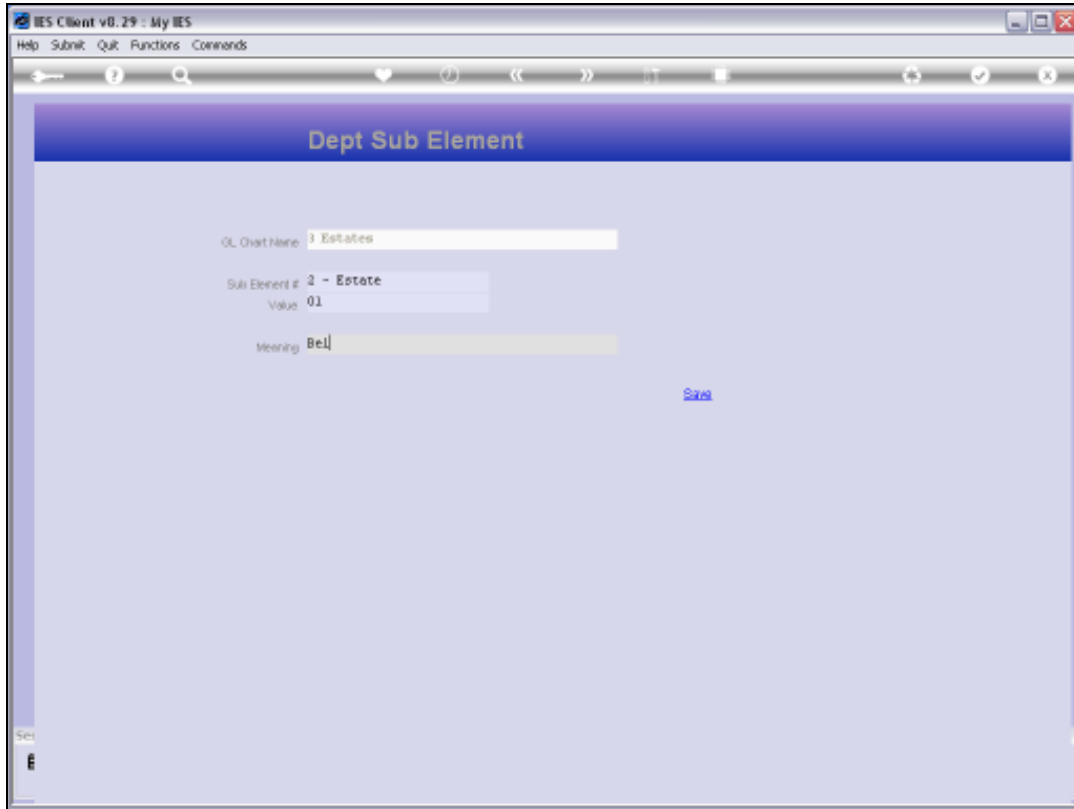
Slide 13

Slide notes:



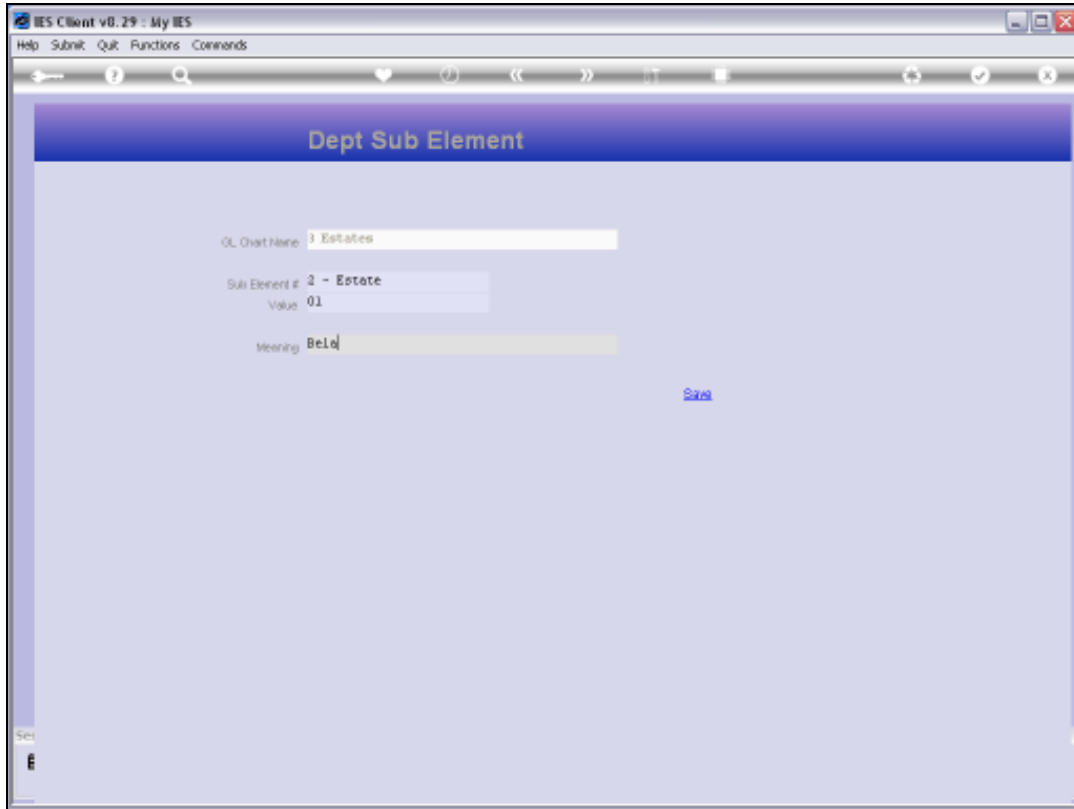
Slide 14

Slide notes:



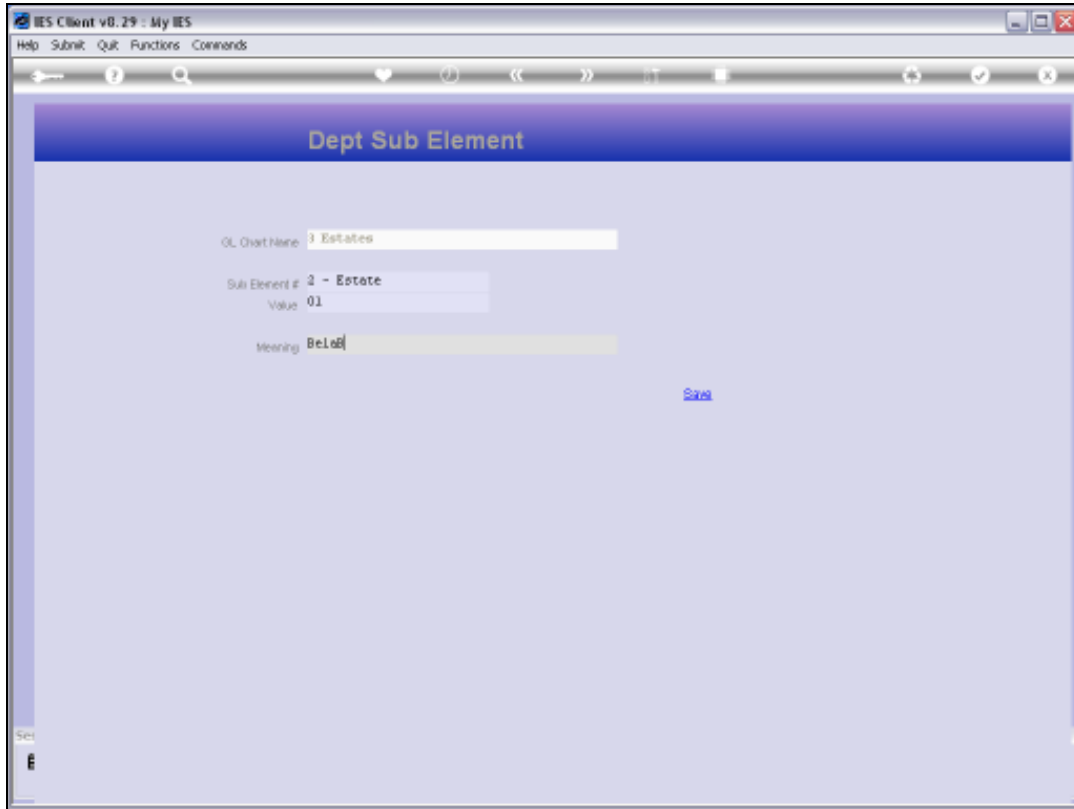
Slide 15

Slide notes:



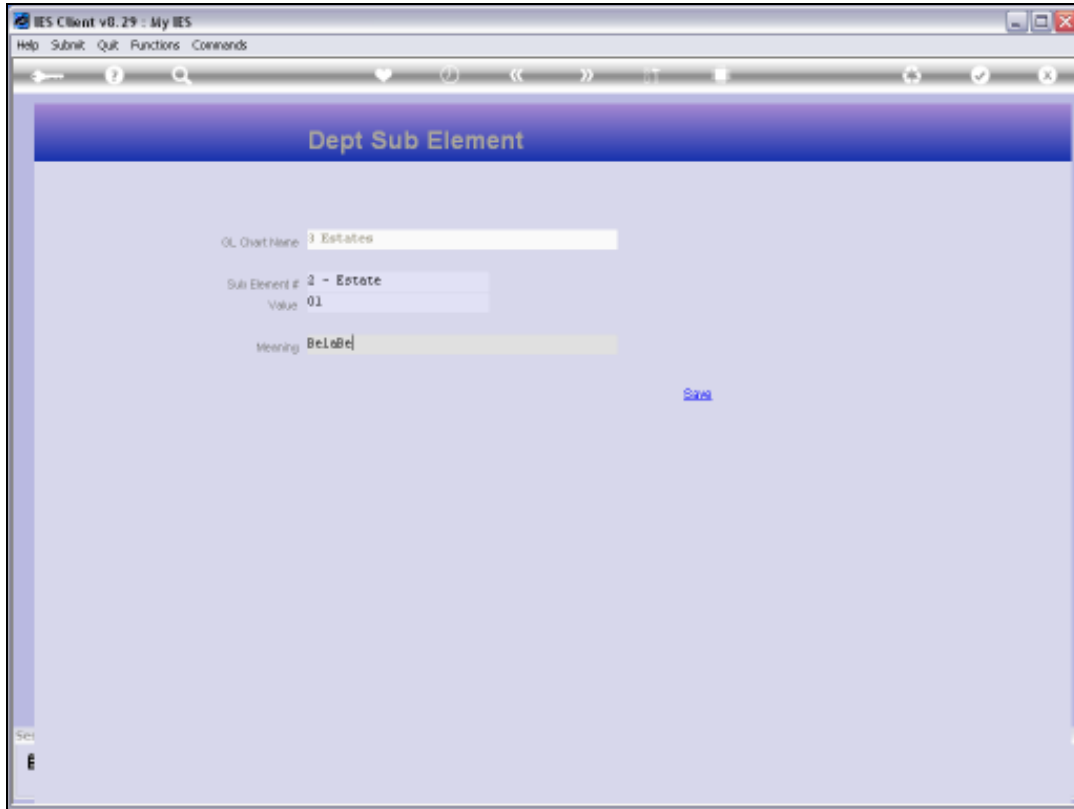
Slide 16

Slide notes:



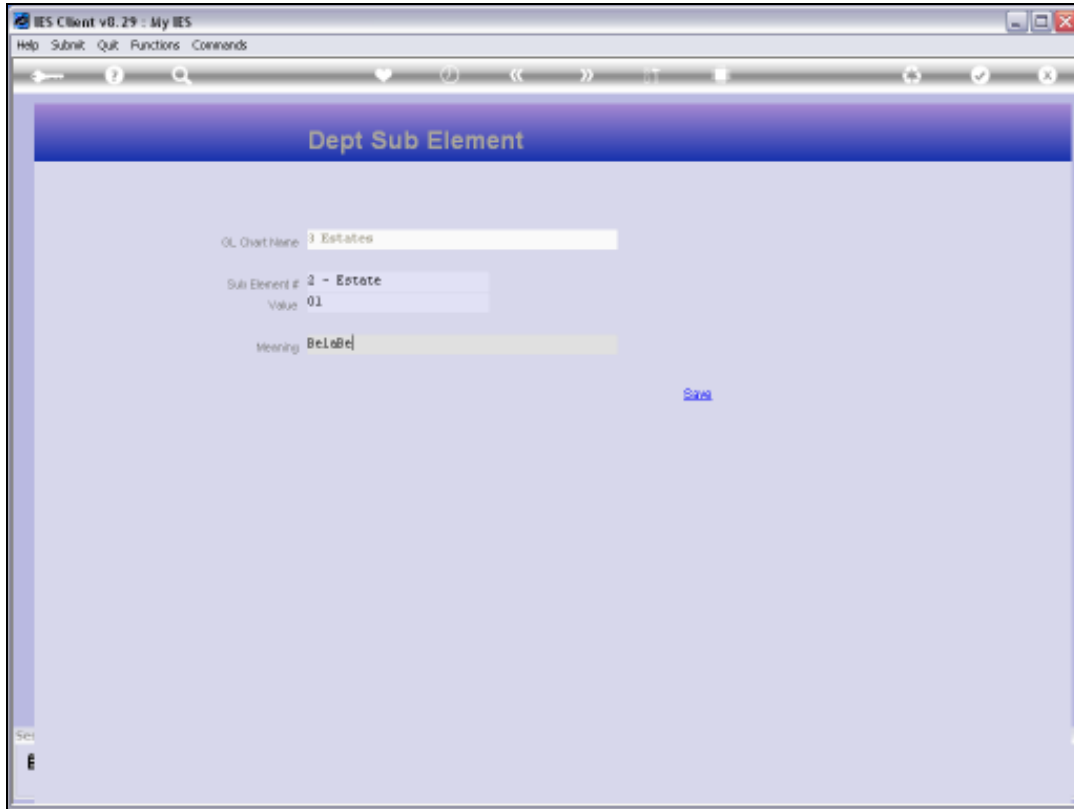
Slide 17

Slide notes:



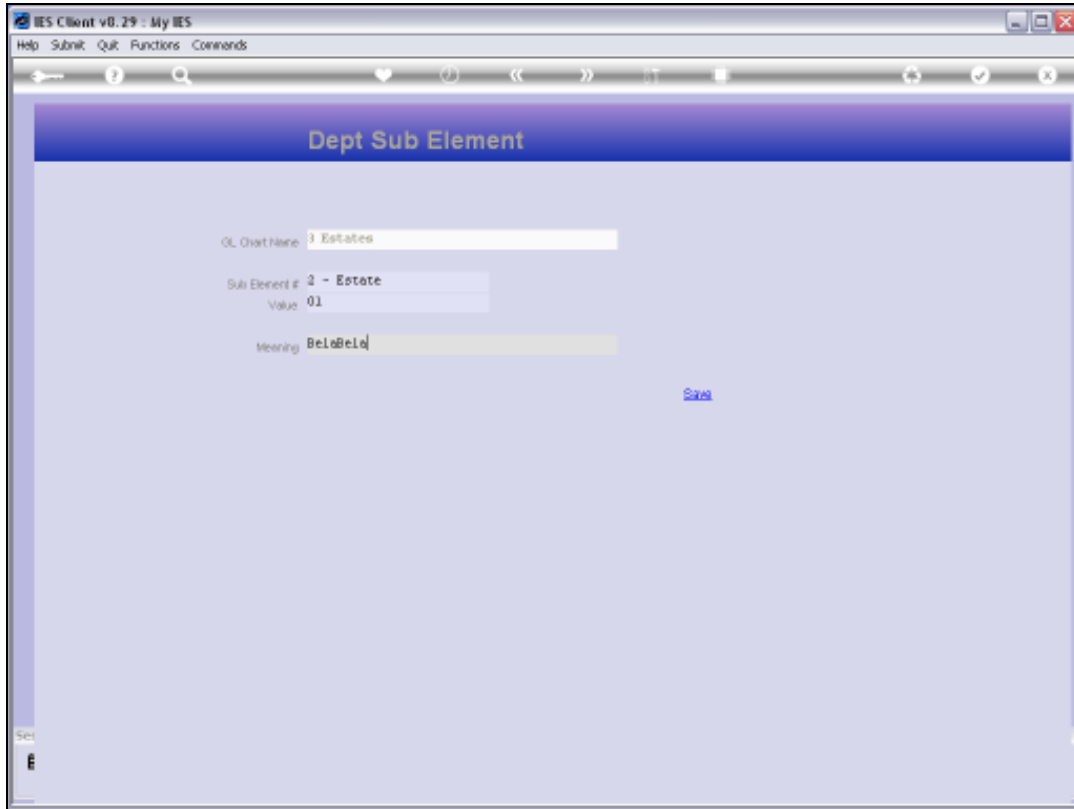
Slide 18

Slide notes:



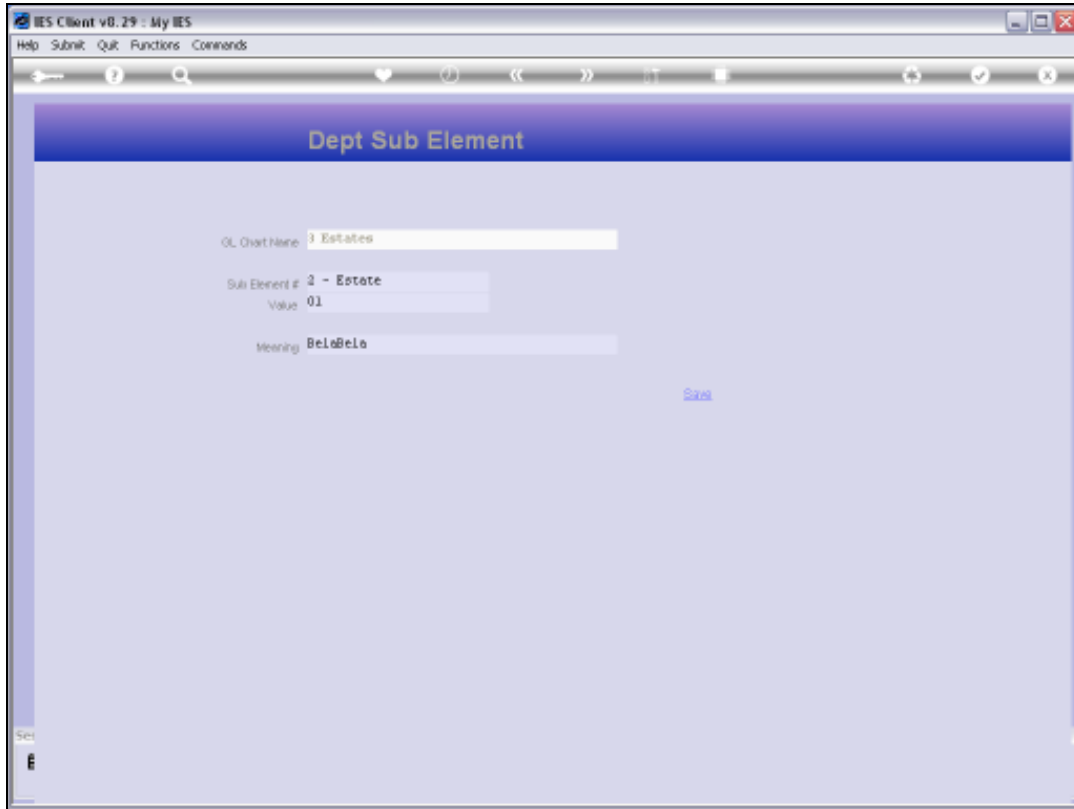
Slide 19

Slide notes:



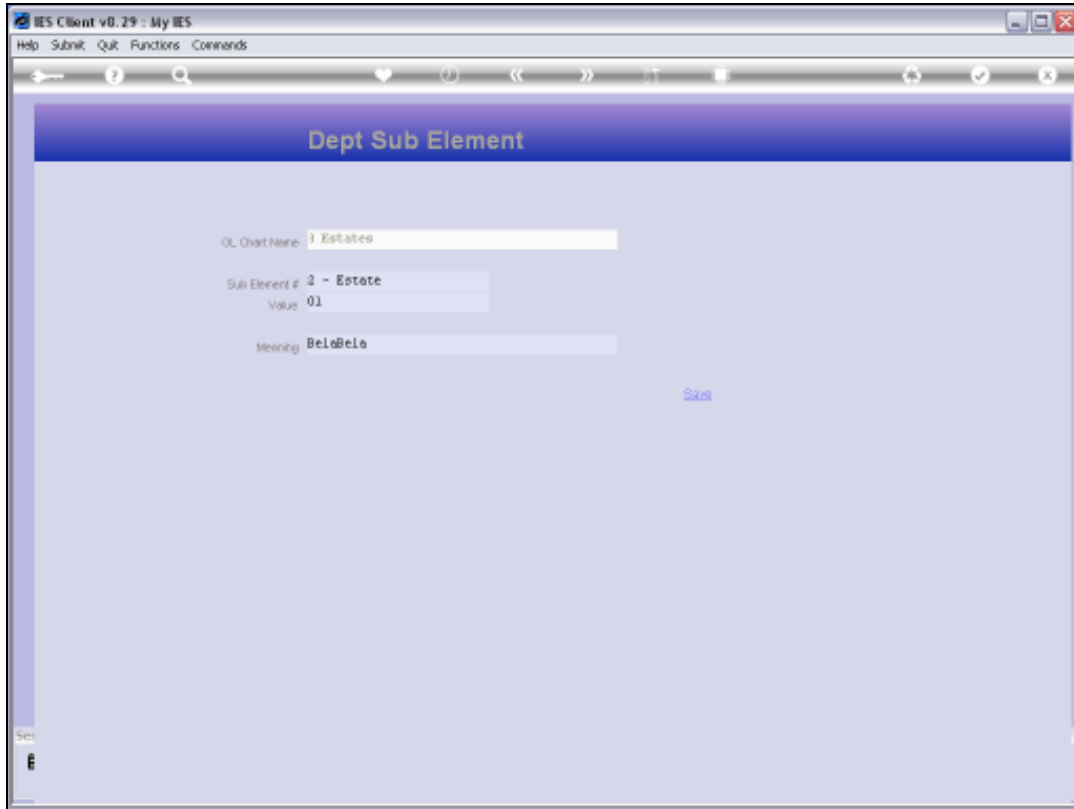
Slide 20

Slide notes:



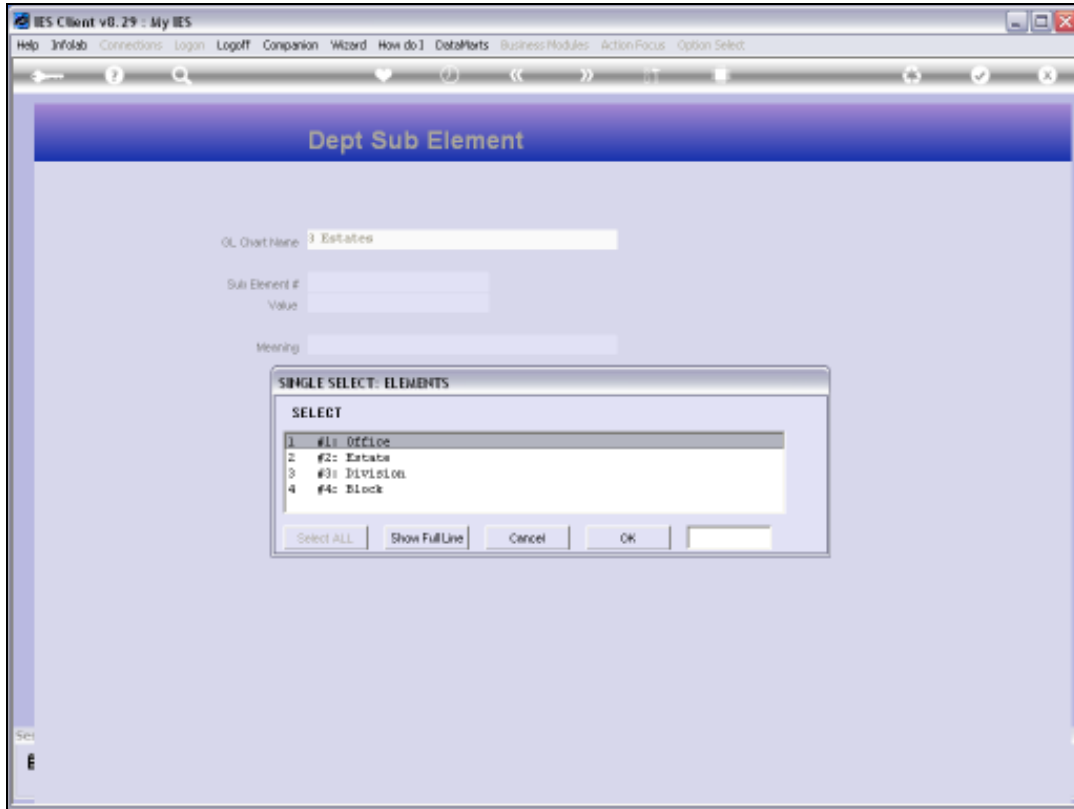
Slide 21

Slide notes:



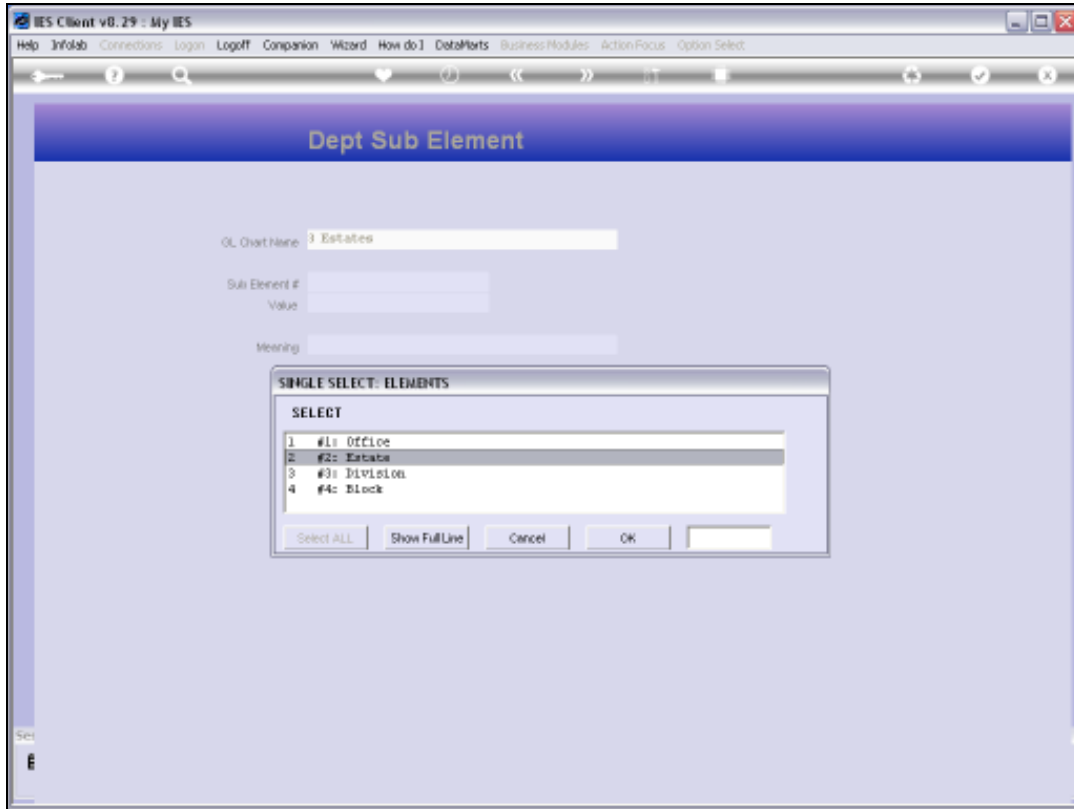
Slide 22

Slide notes:



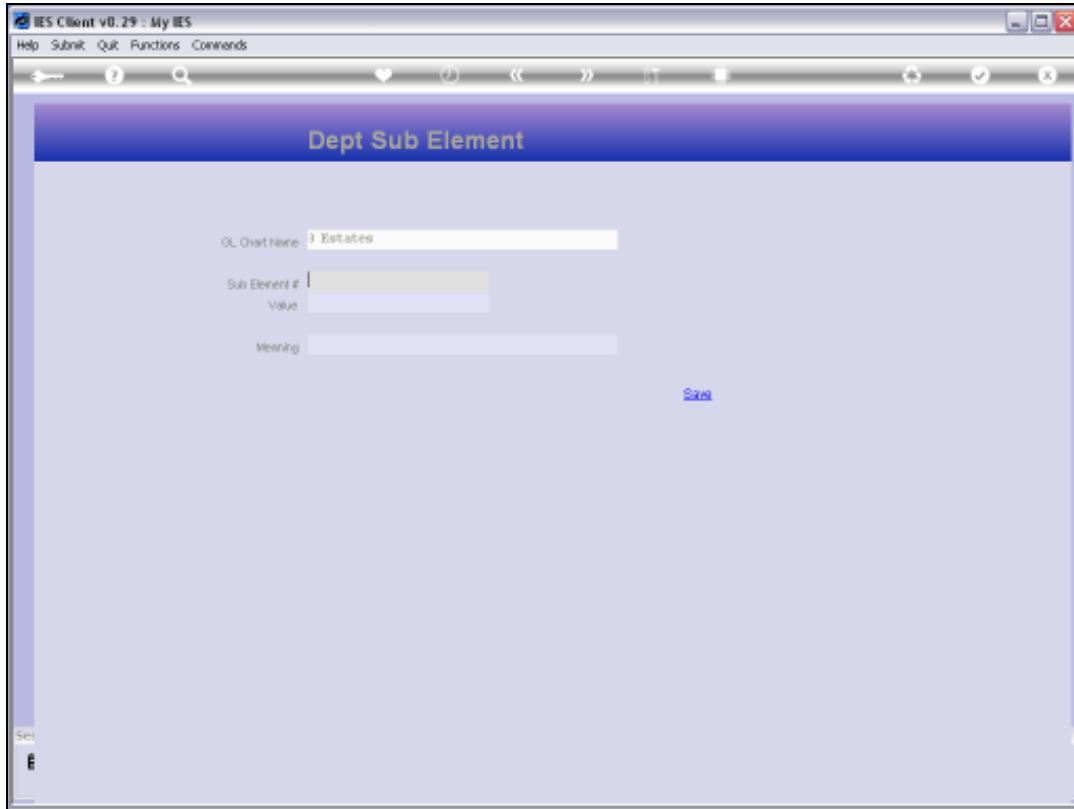
Slide 23

Slide notes:



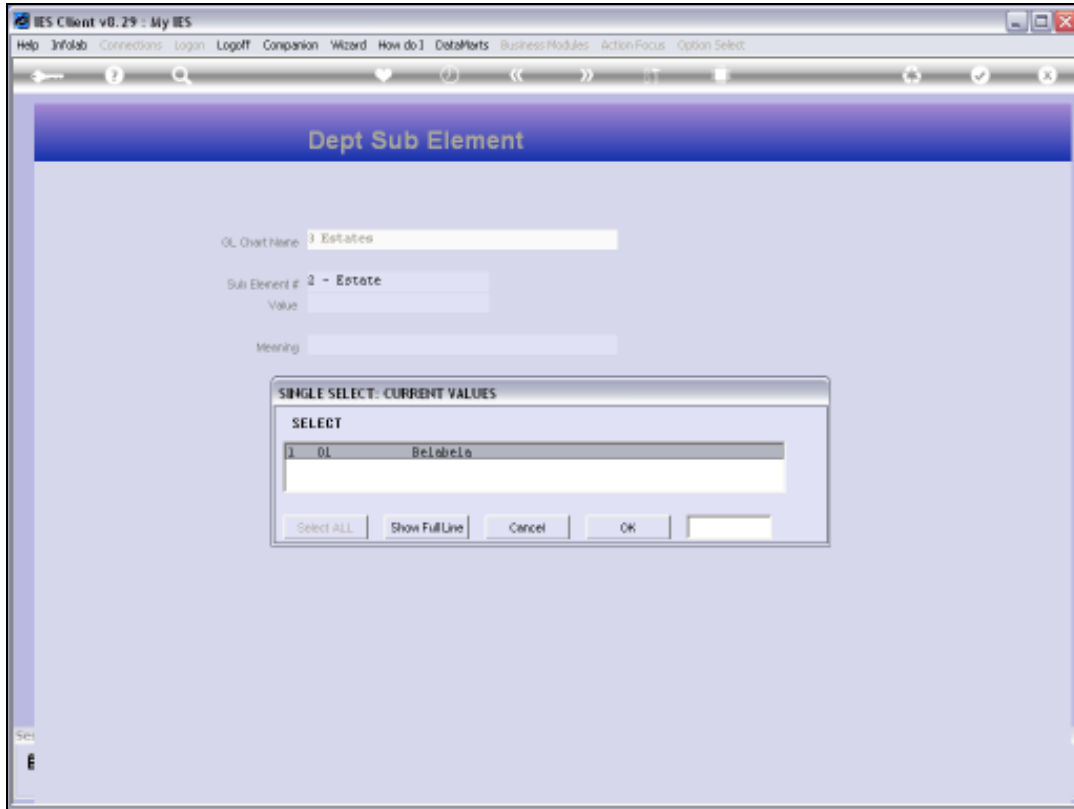
Slide 24

Slide notes:



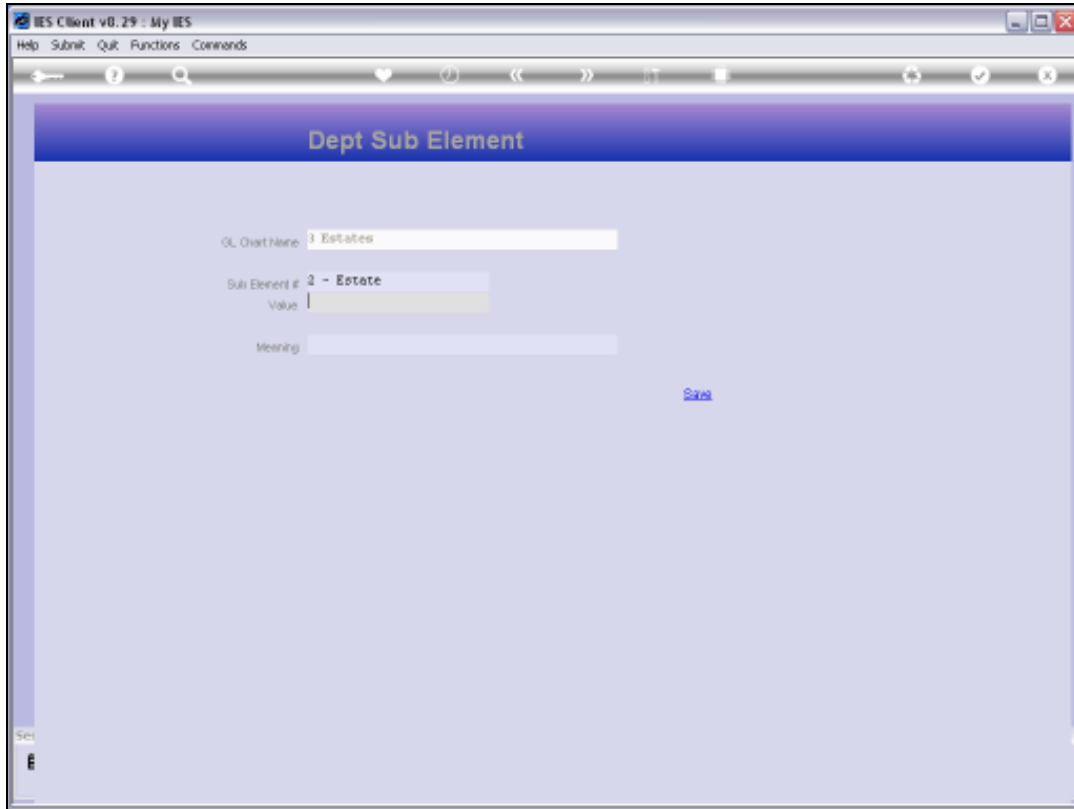
Slide 25

Slide notes:



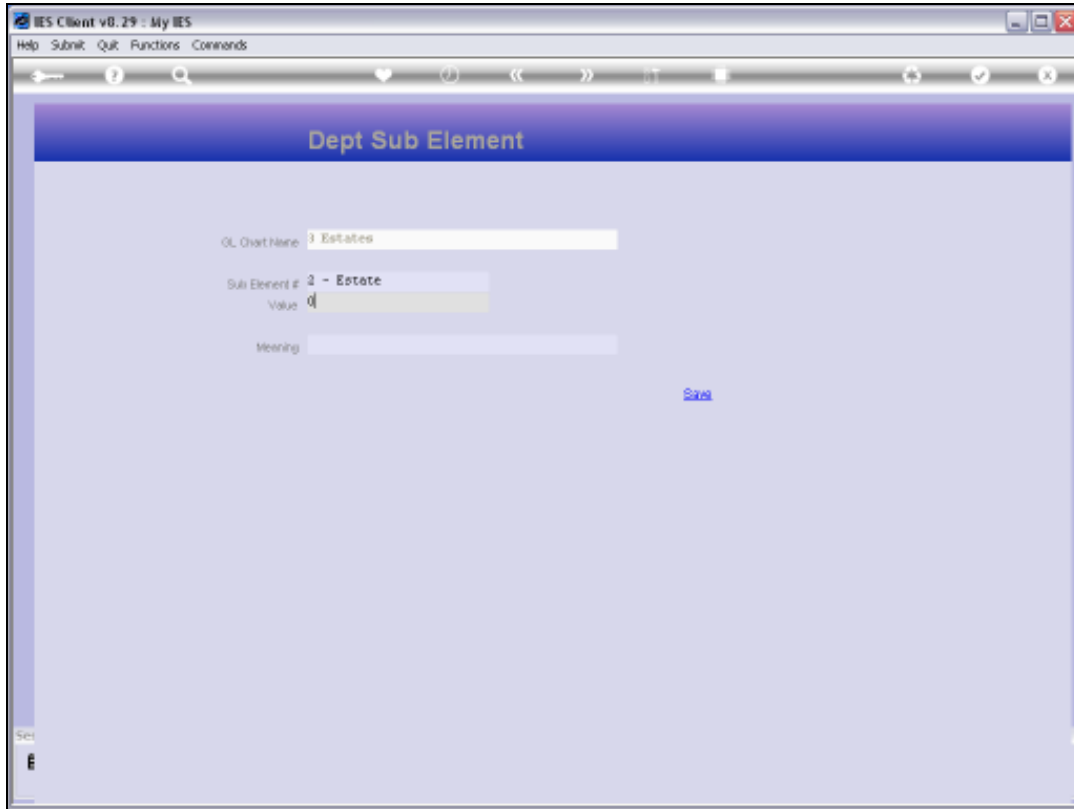
Slide 26

Slide notes:



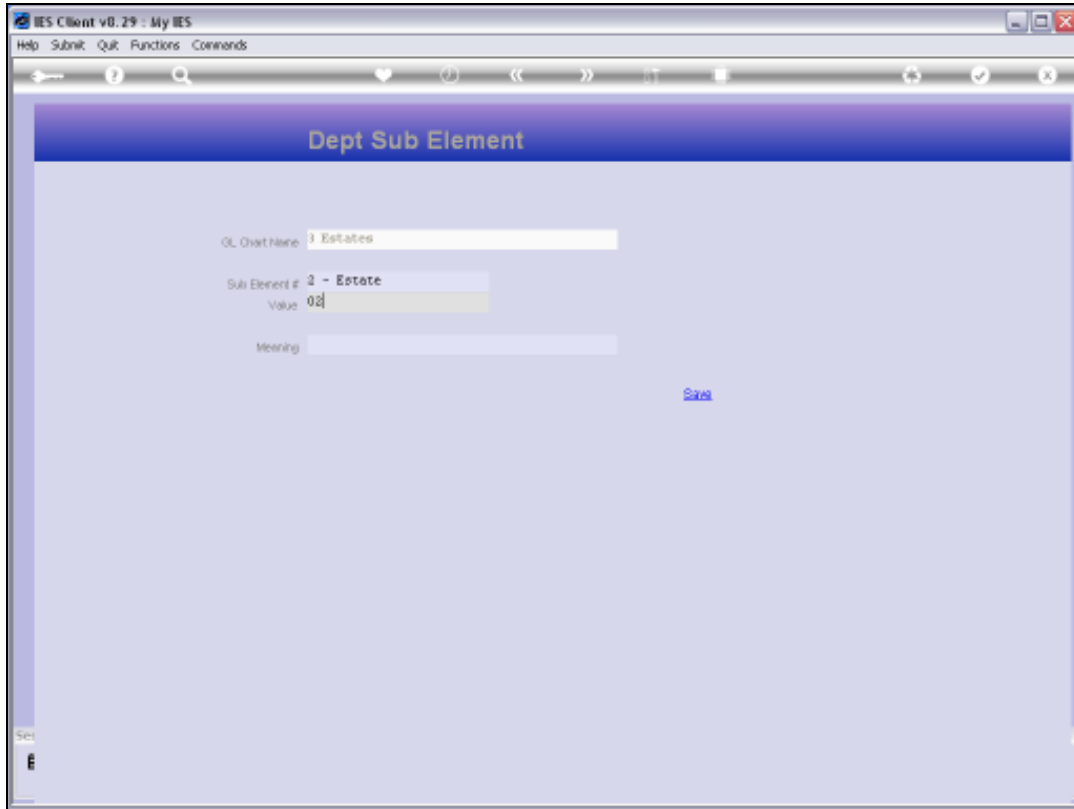
Slide 27

Slide notes:



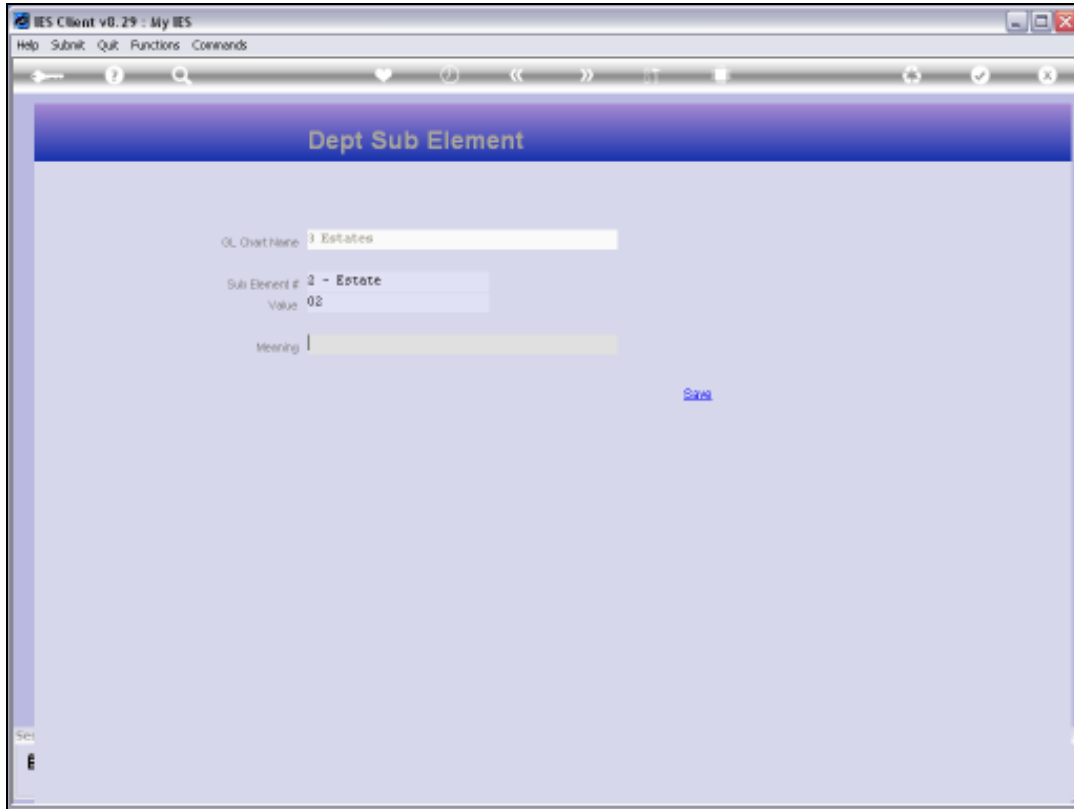
Slide 28

Slide notes:



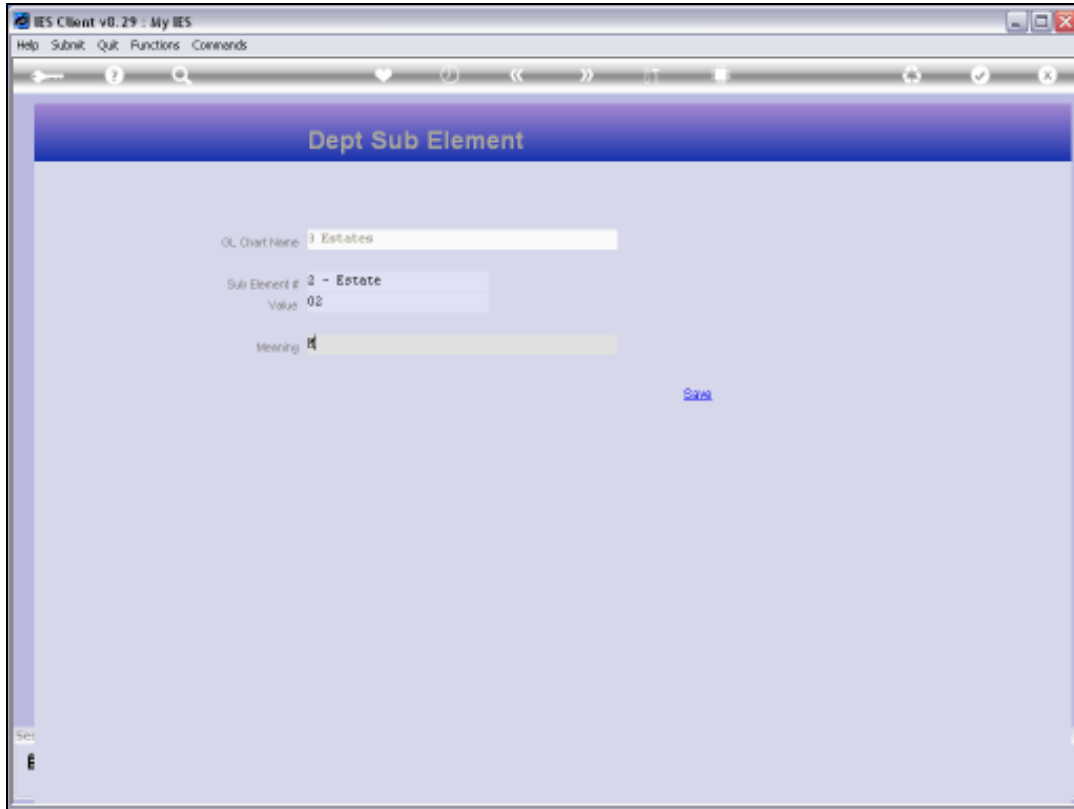
Slide 29

Slide notes:



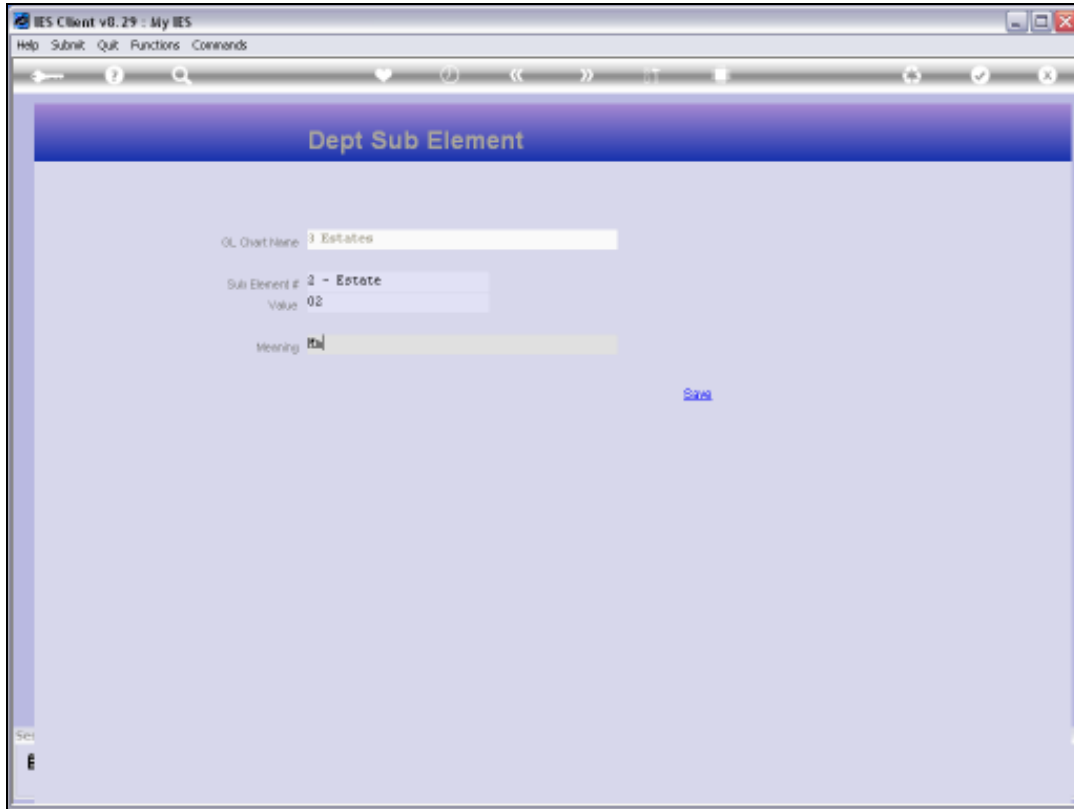
Slide 30

Slide notes:



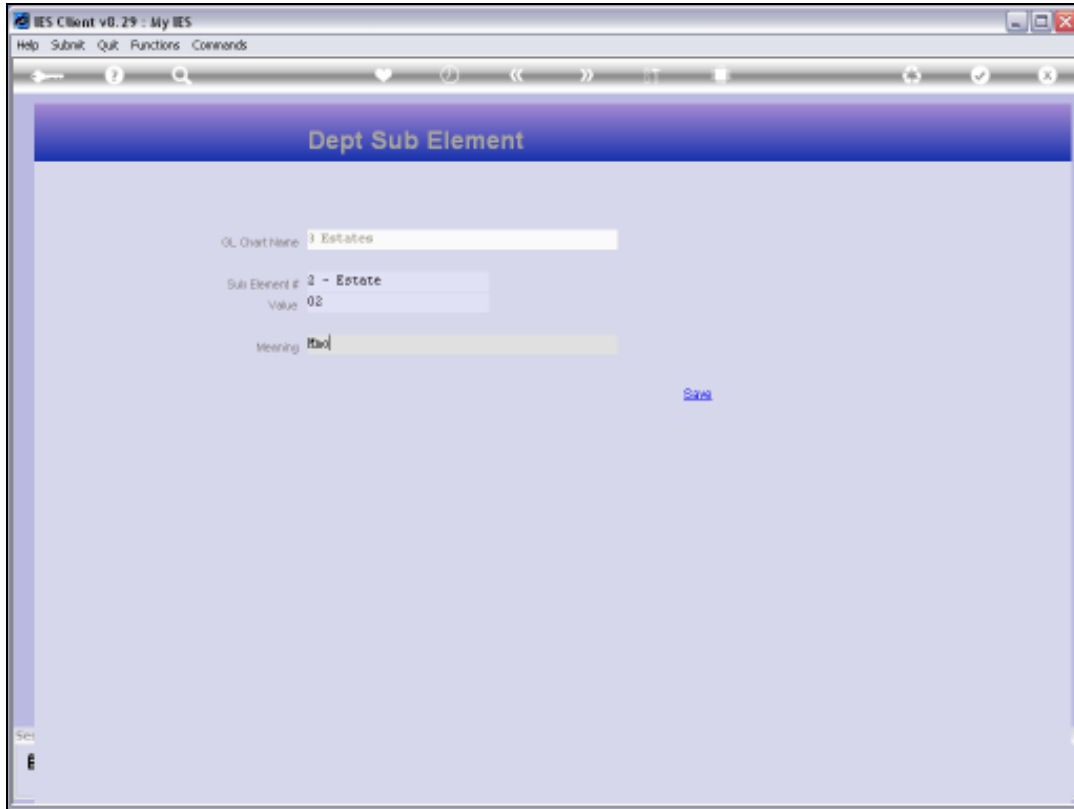
Slide 31

Slide notes:



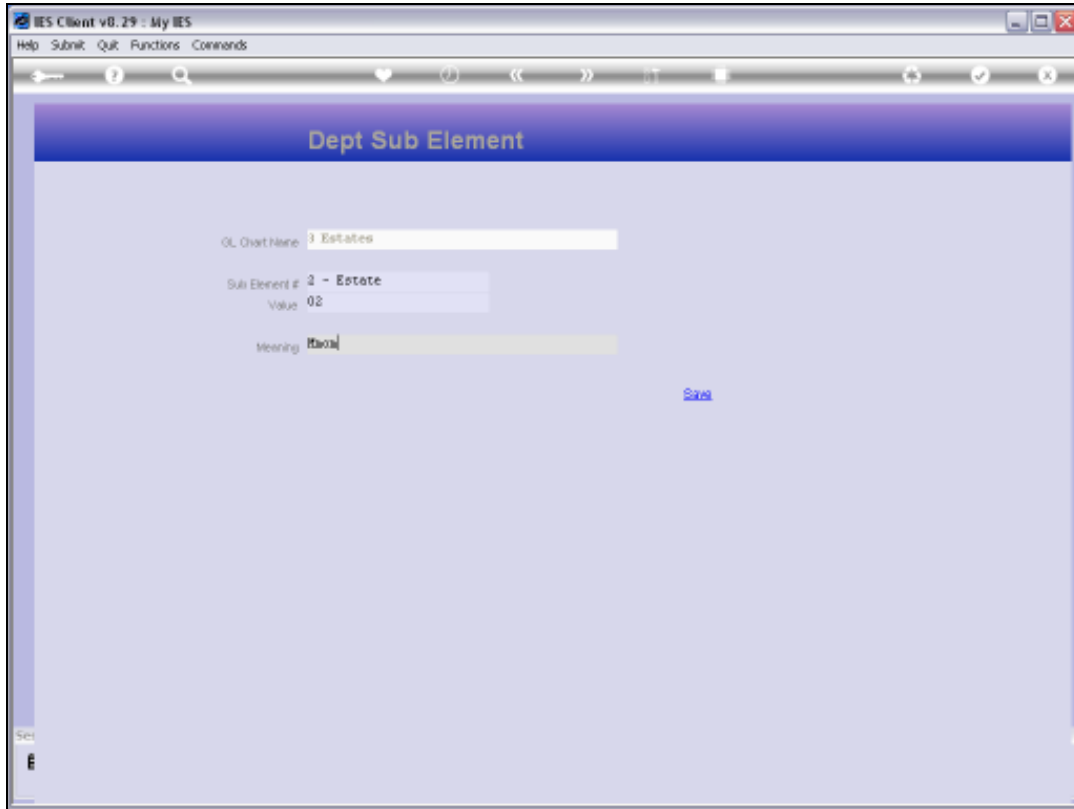
Slide 32

Slide notes:



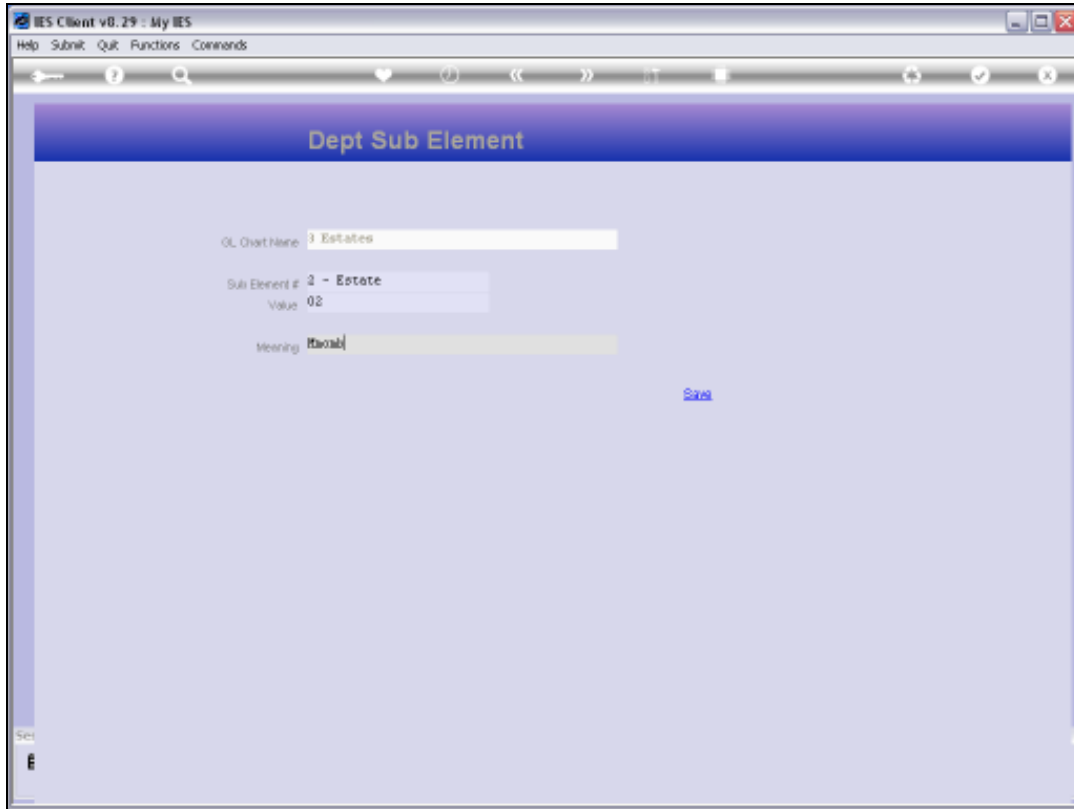
Slide 33

Slide notes:



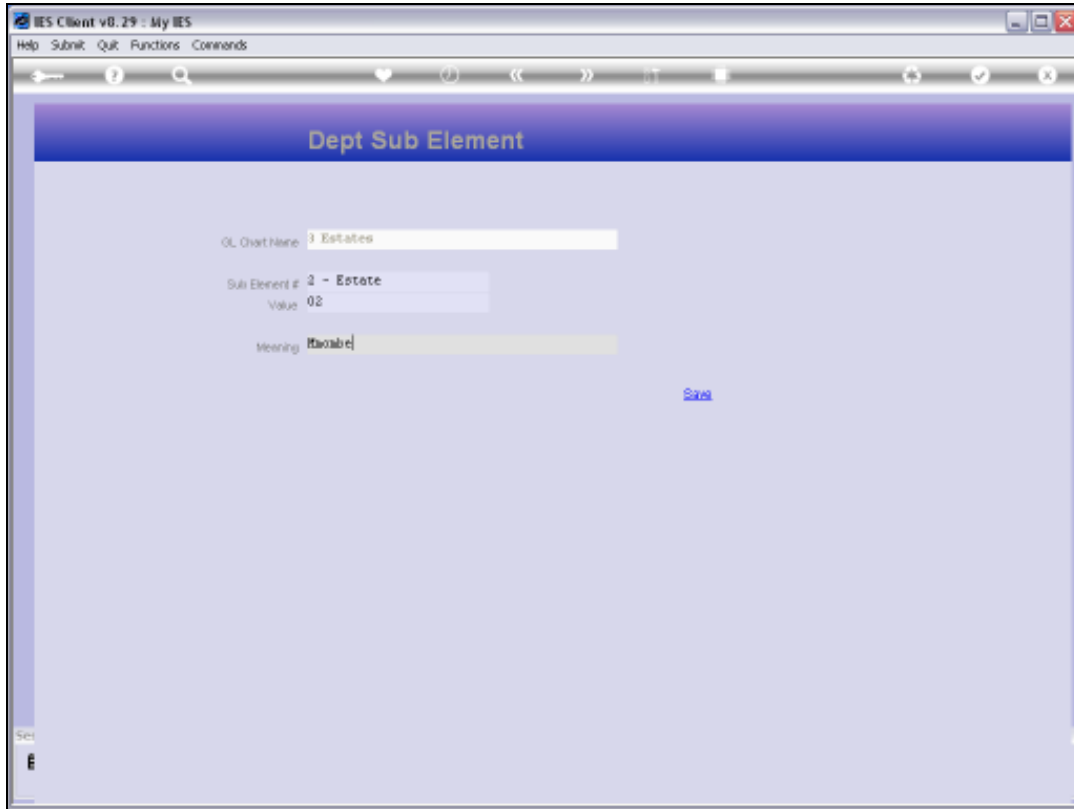
Slide 34

Slide notes:



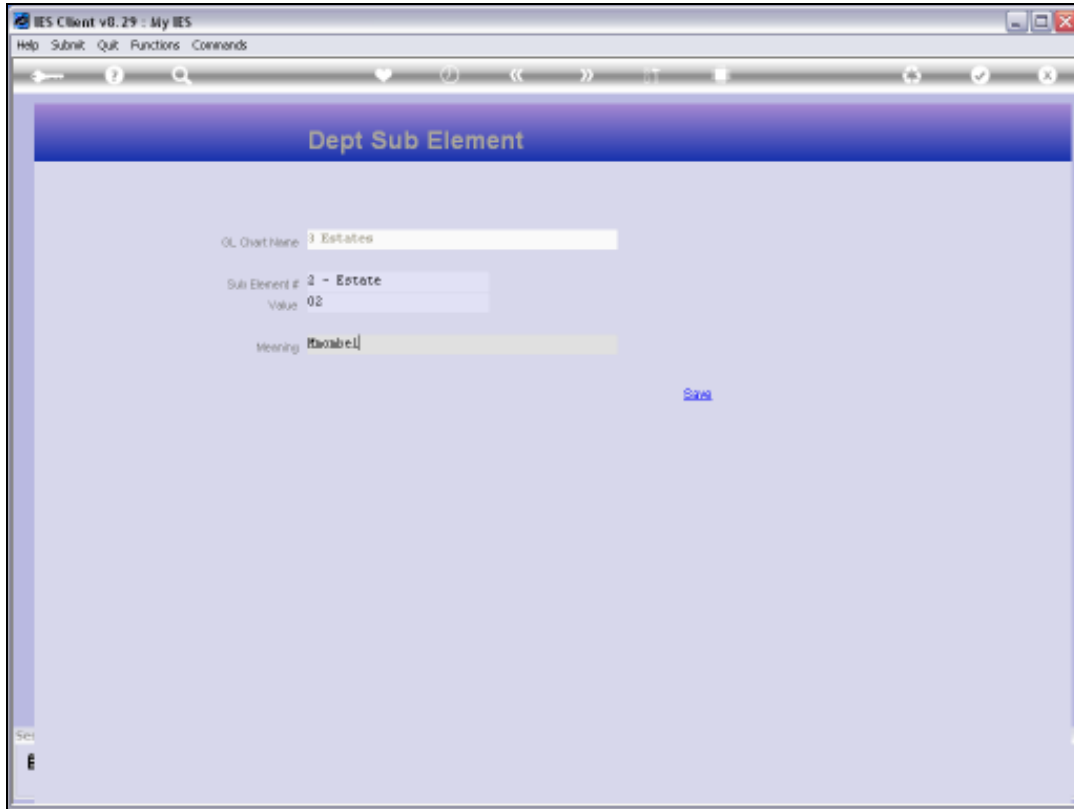
Slide 35

Slide notes:



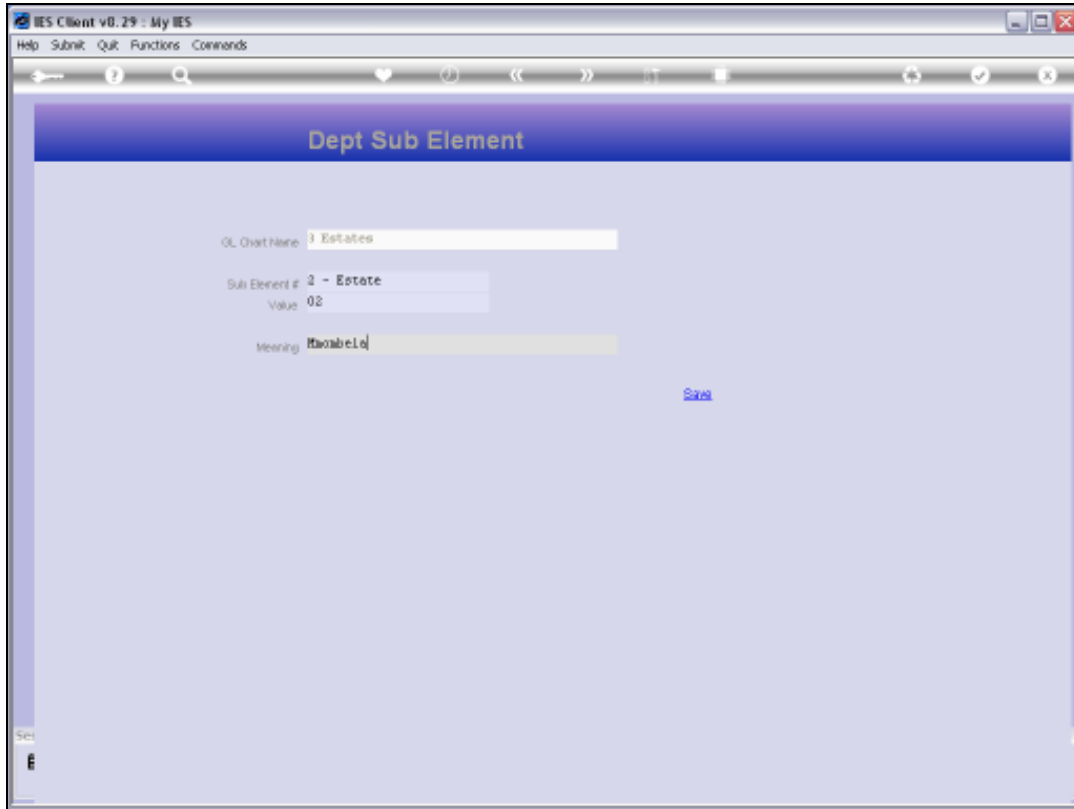
Slide 36

Slide notes:



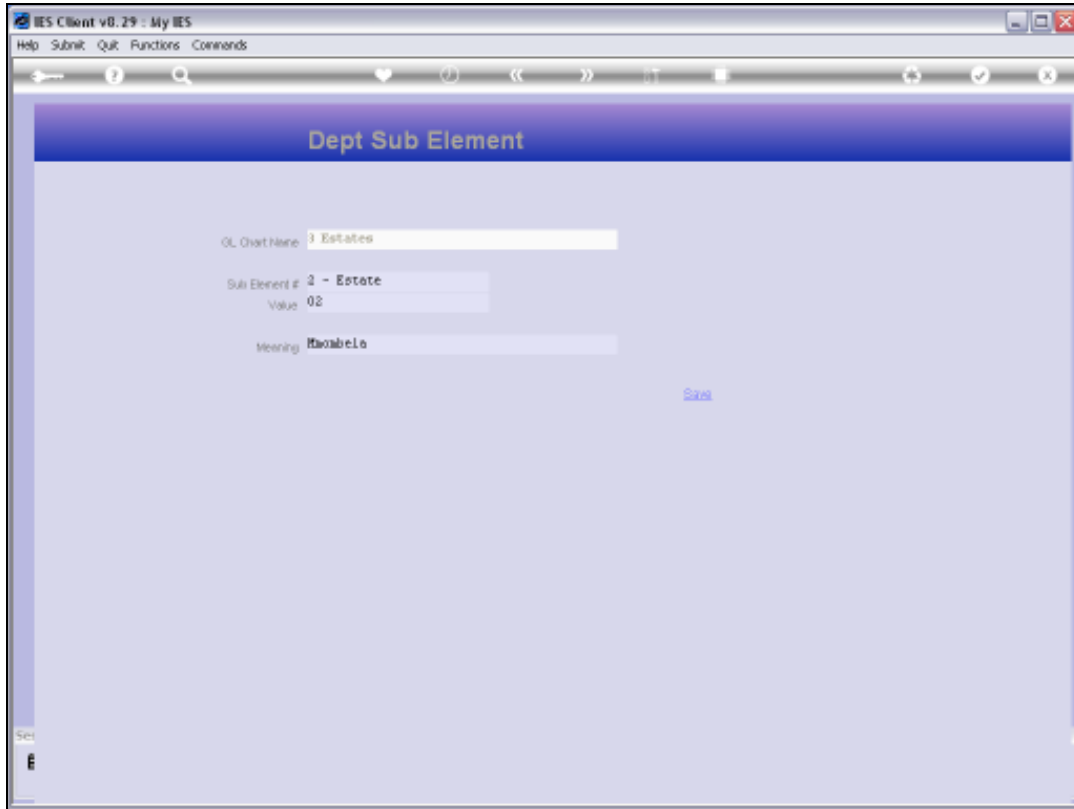
Slide 37

Slide notes:



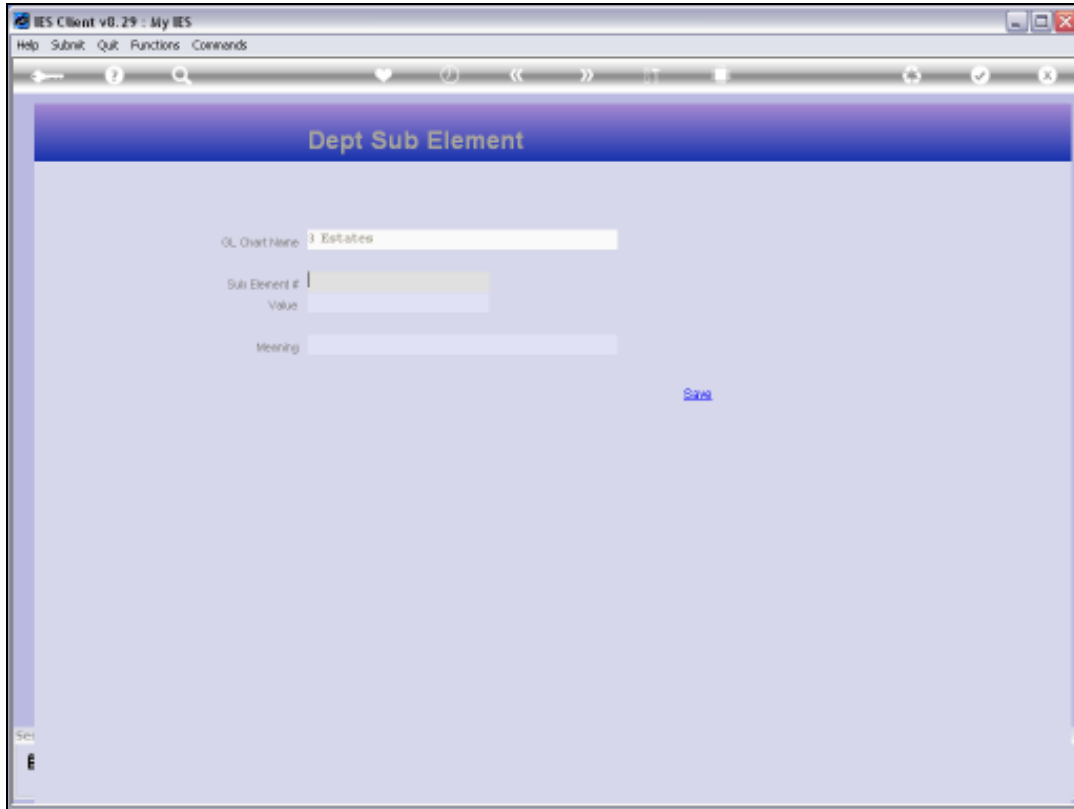
Slide 38

Slide notes:



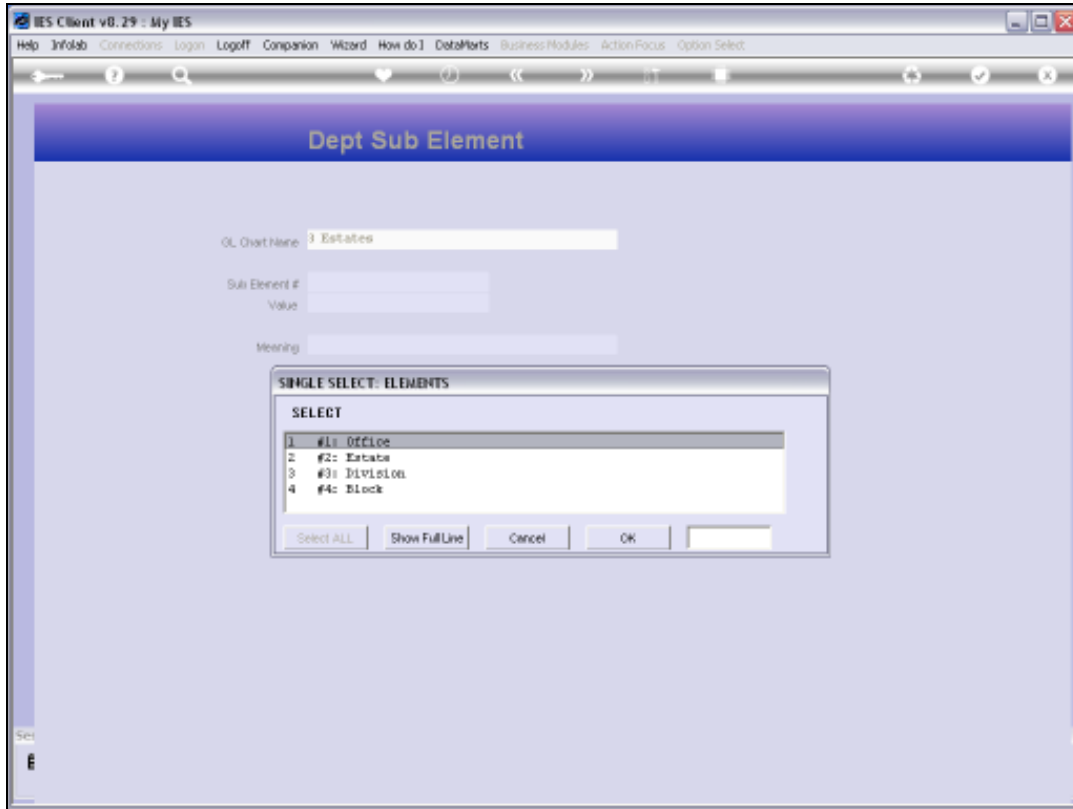
Slide 39

Slide notes:



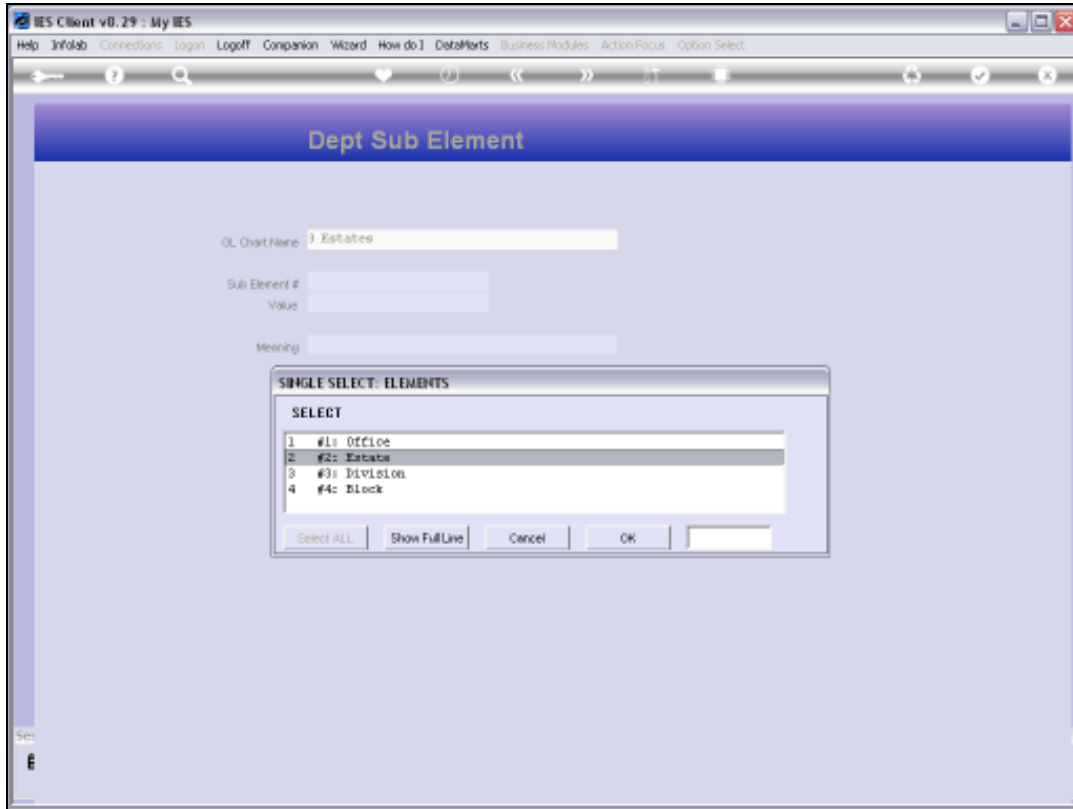
Slide 40

Slide notes:



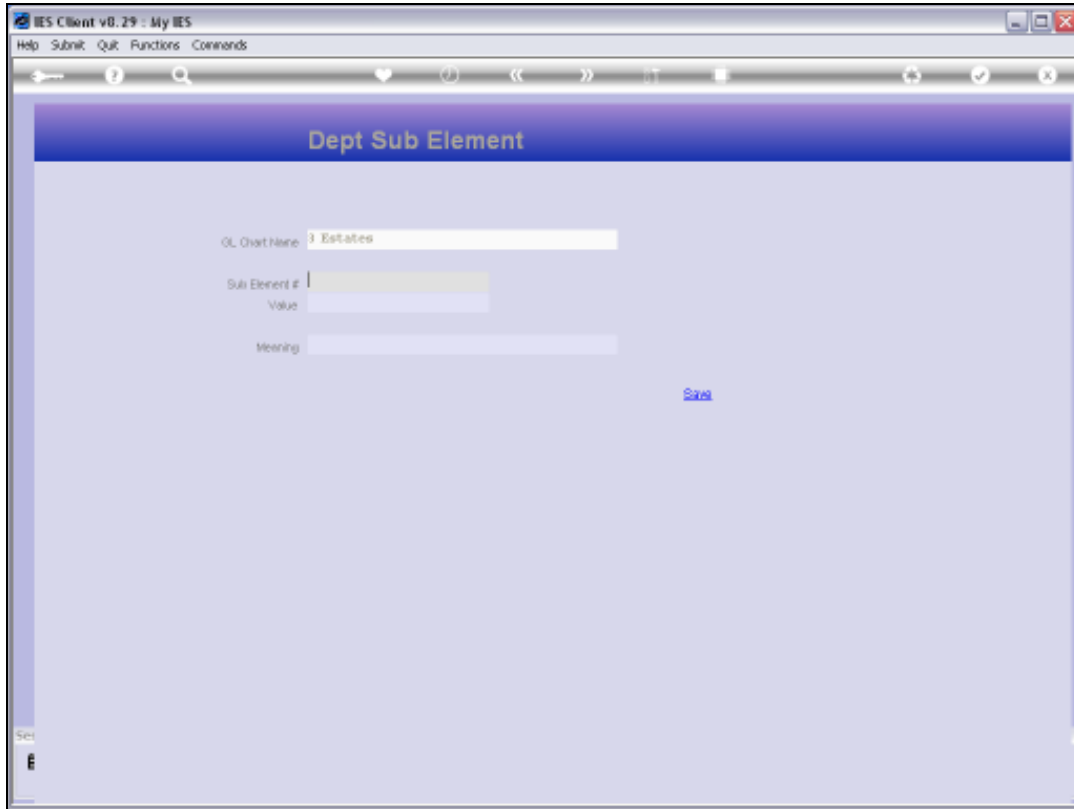
Slide 41

Slide notes:



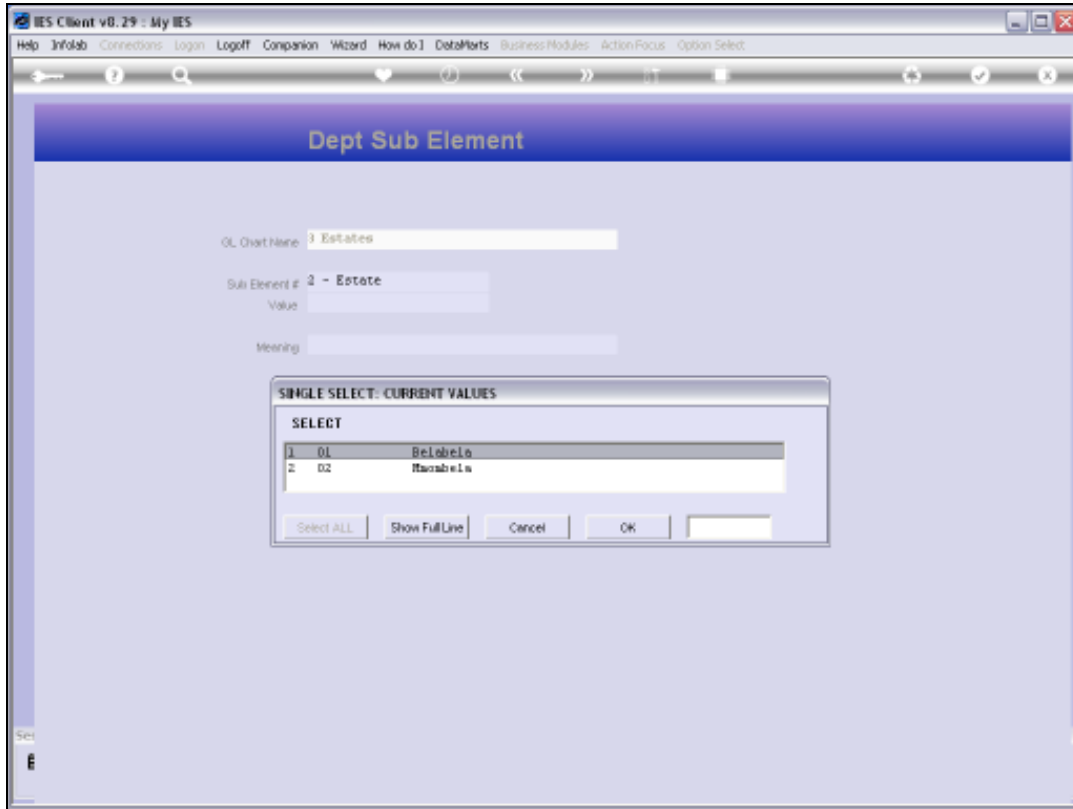
Slide 42

Slide notes:



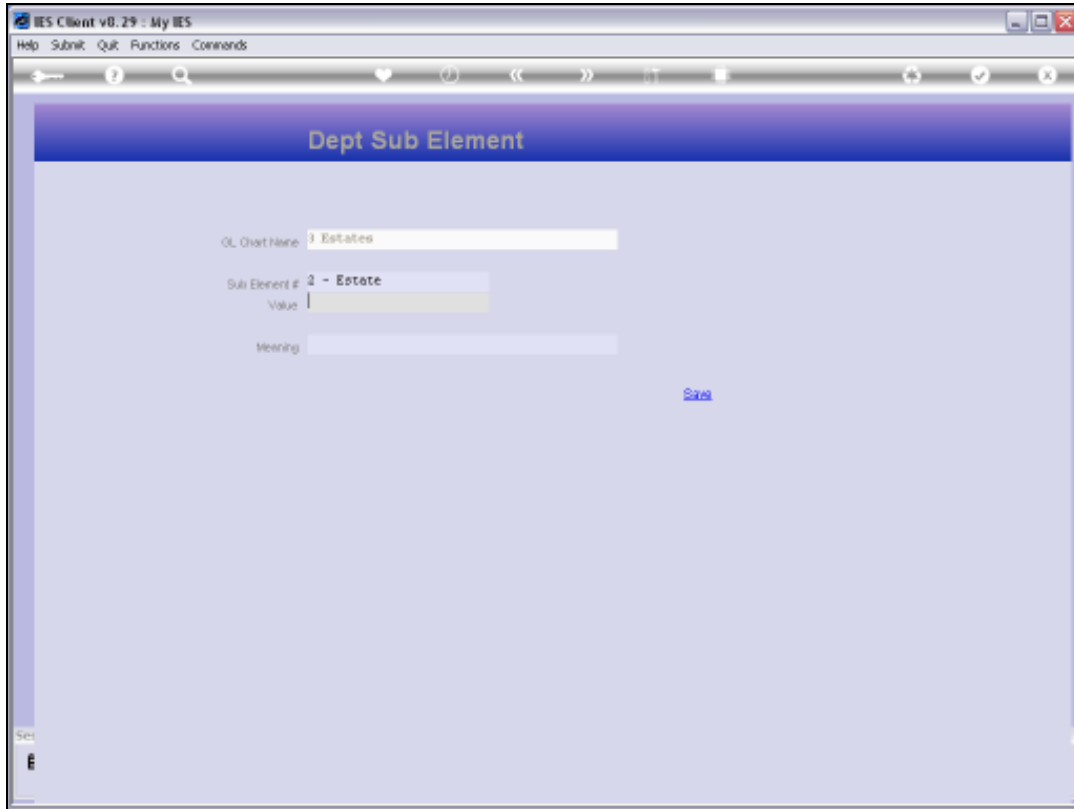
Slide 43

Slide notes:



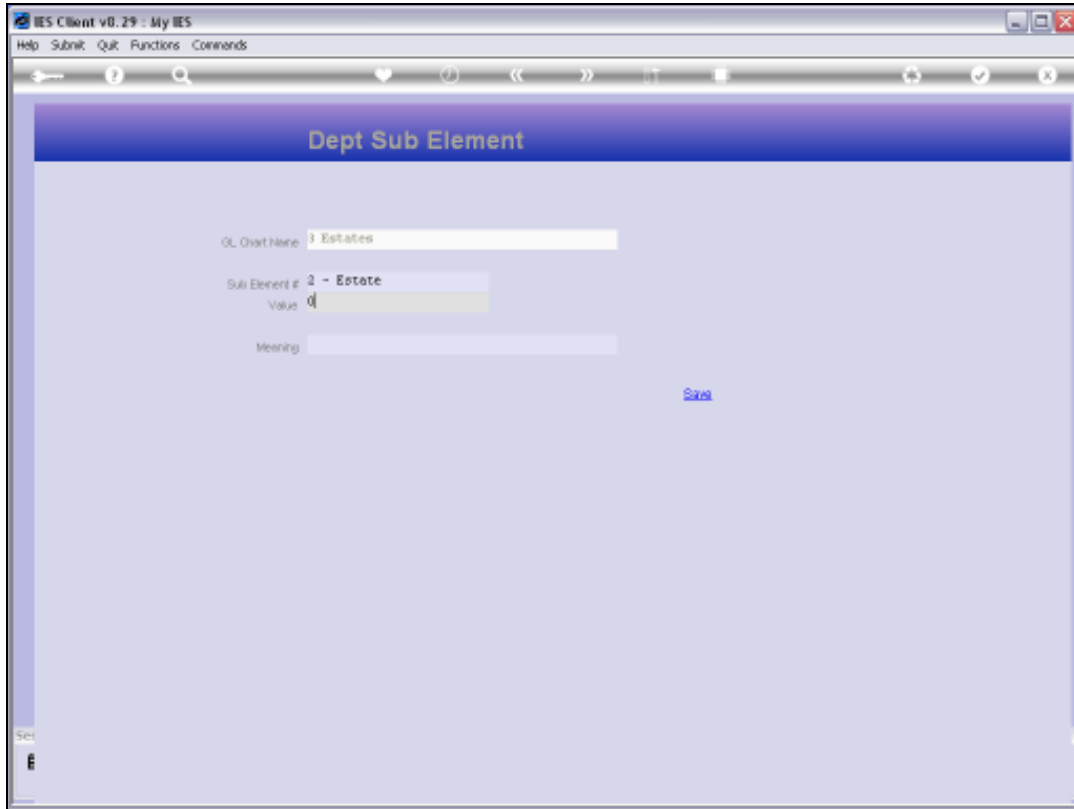
Slide 44

Slide notes:



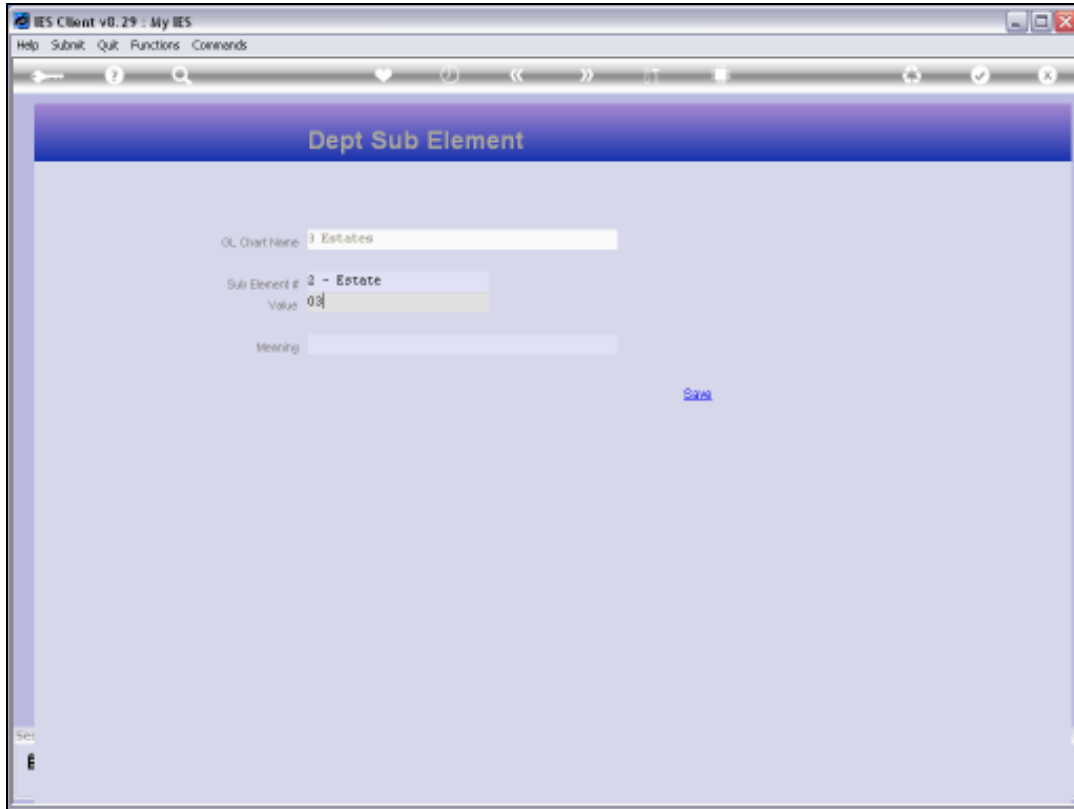
Slide 45

Slide notes:



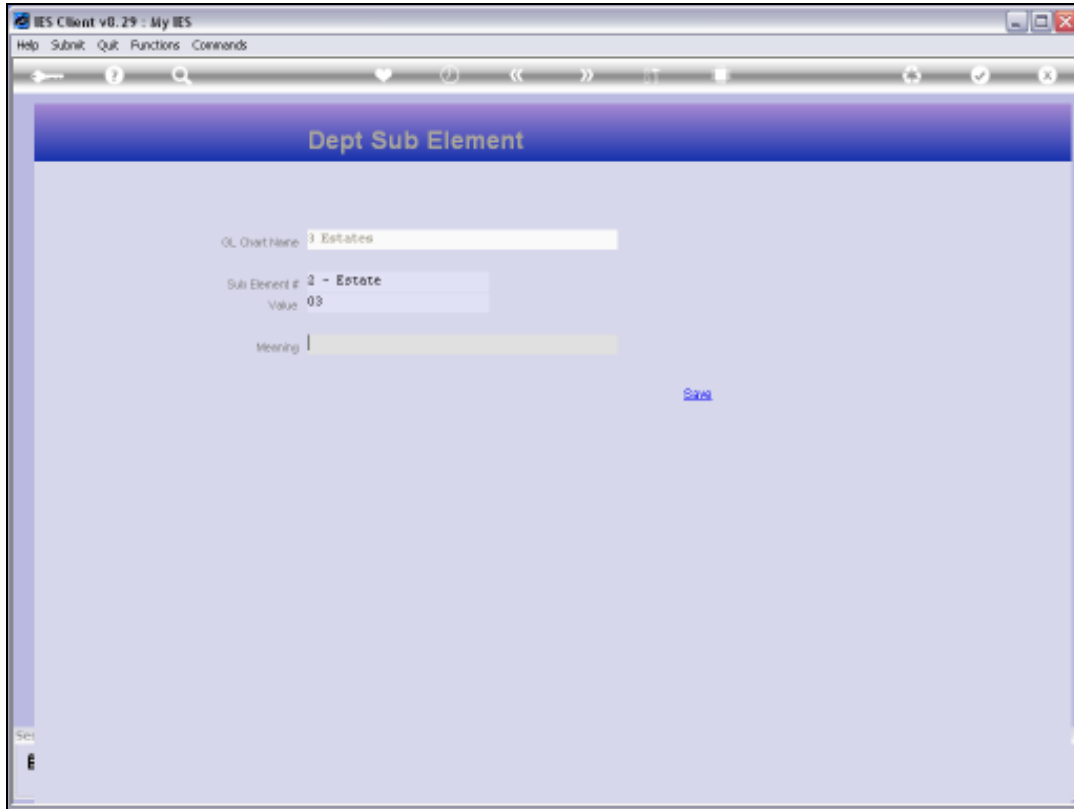
Slide 46

Slide notes:



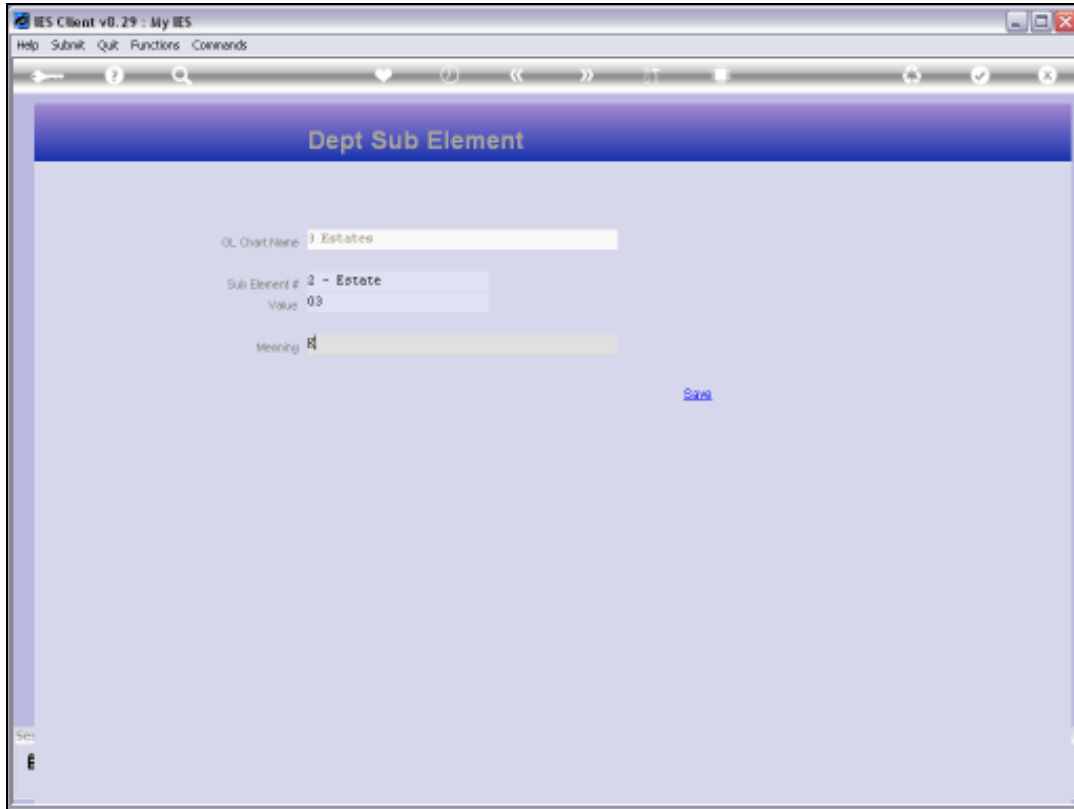
Slide 47

Slide notes:



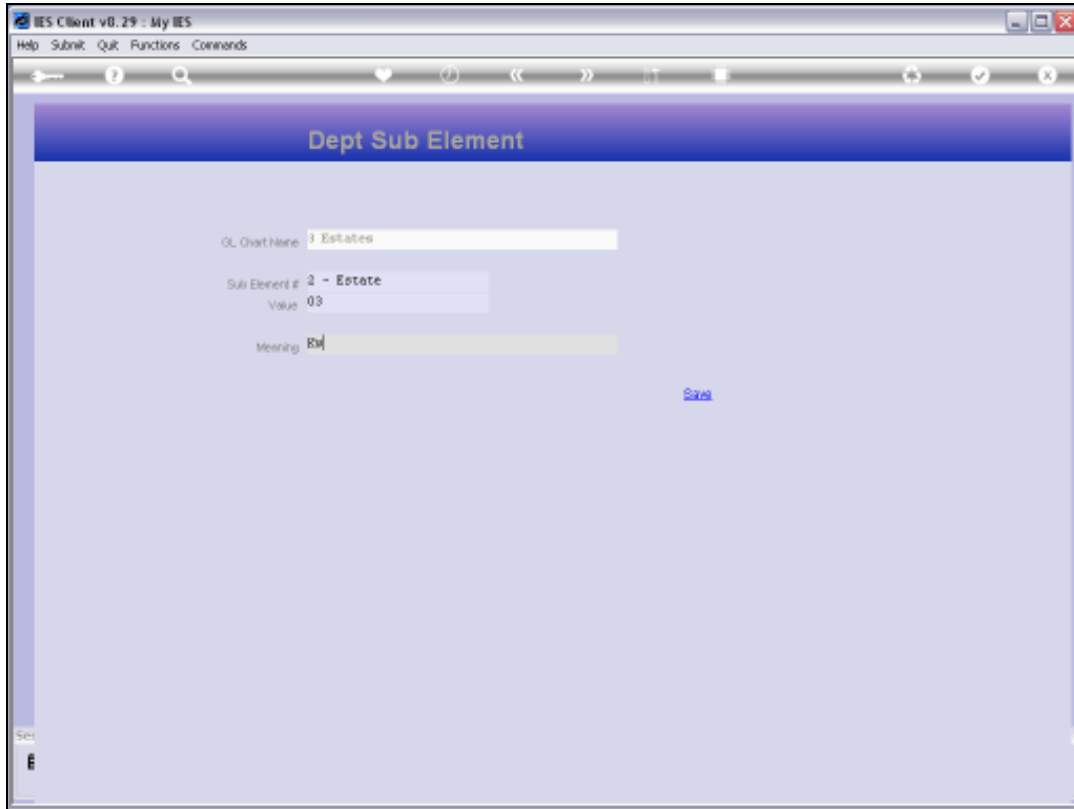
Slide 48

Slide notes:



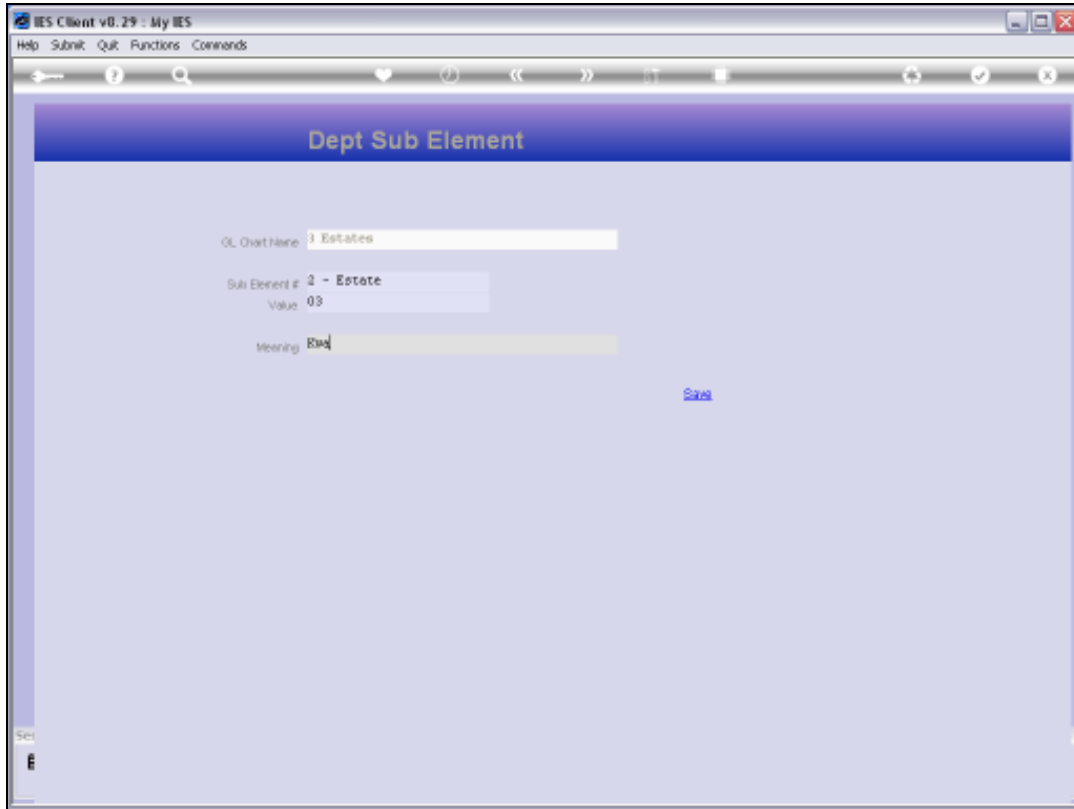
Slide 49

Slide notes:



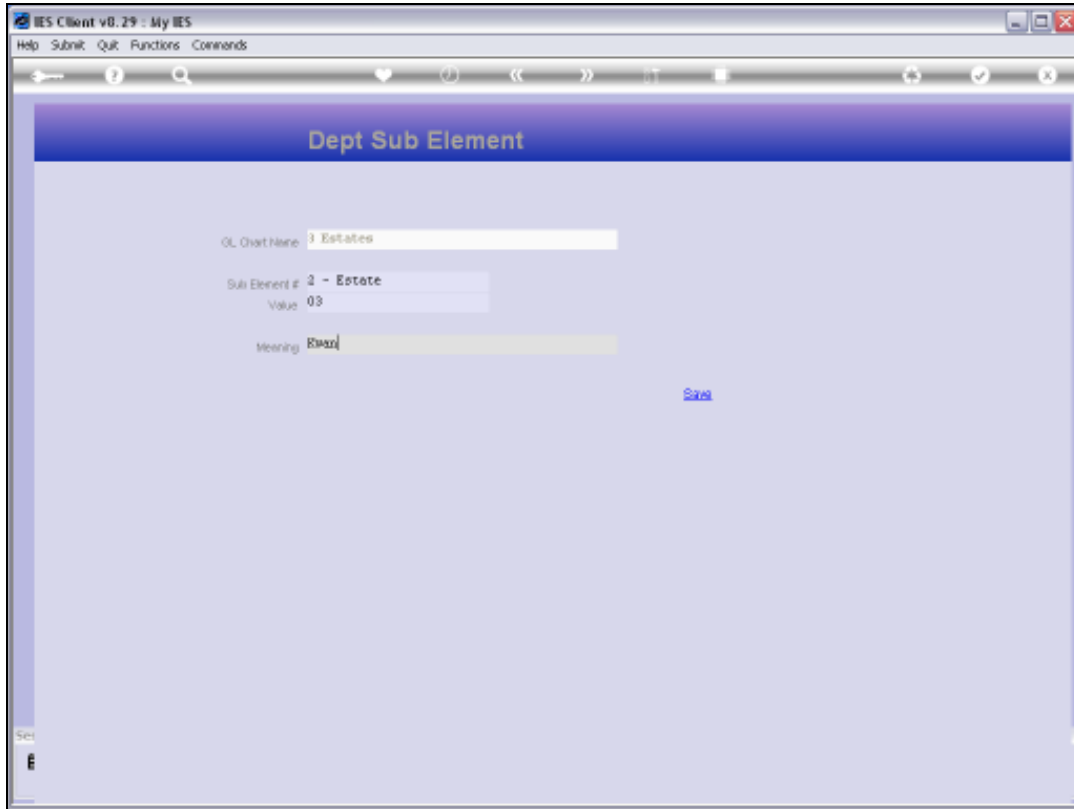
Slide 50

Slide notes:



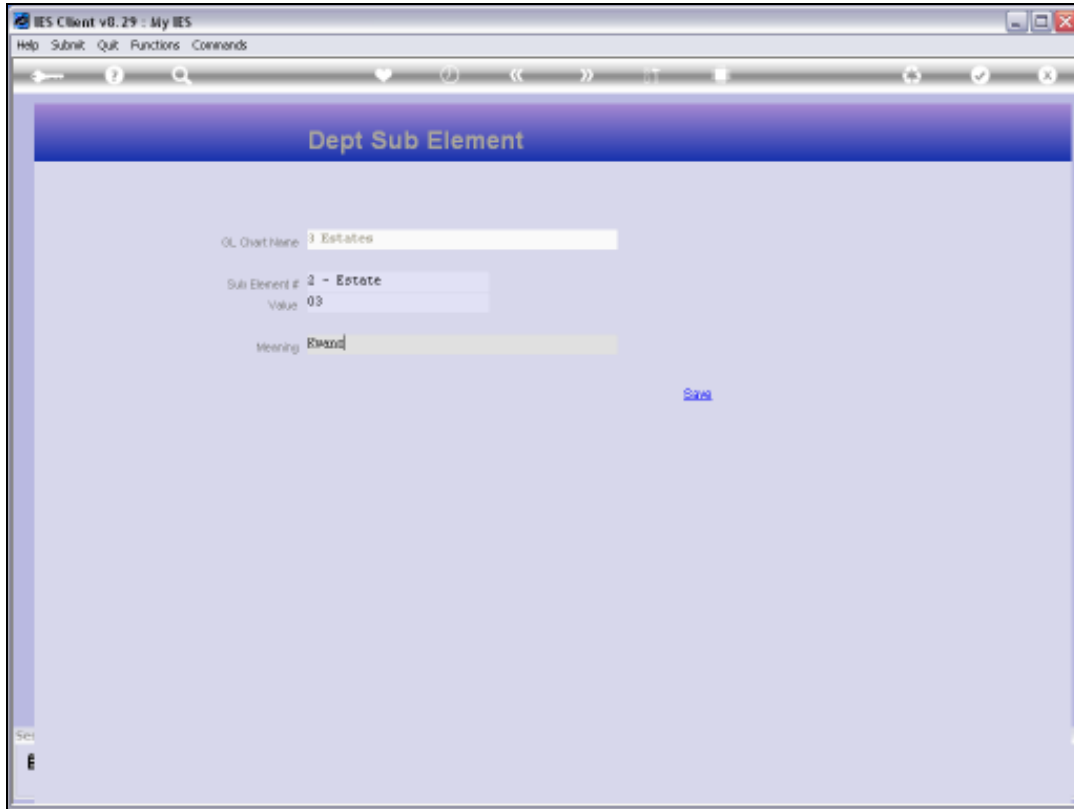
Slide 51

Slide notes:



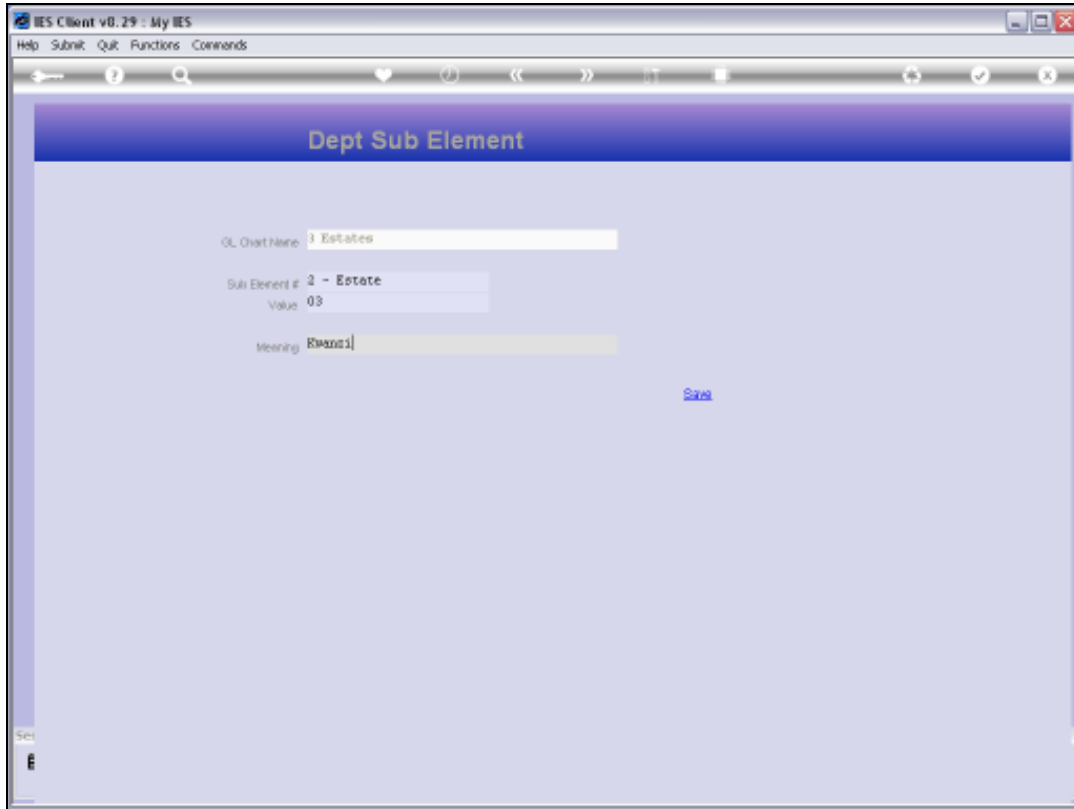
Slide 52

Slide notes:



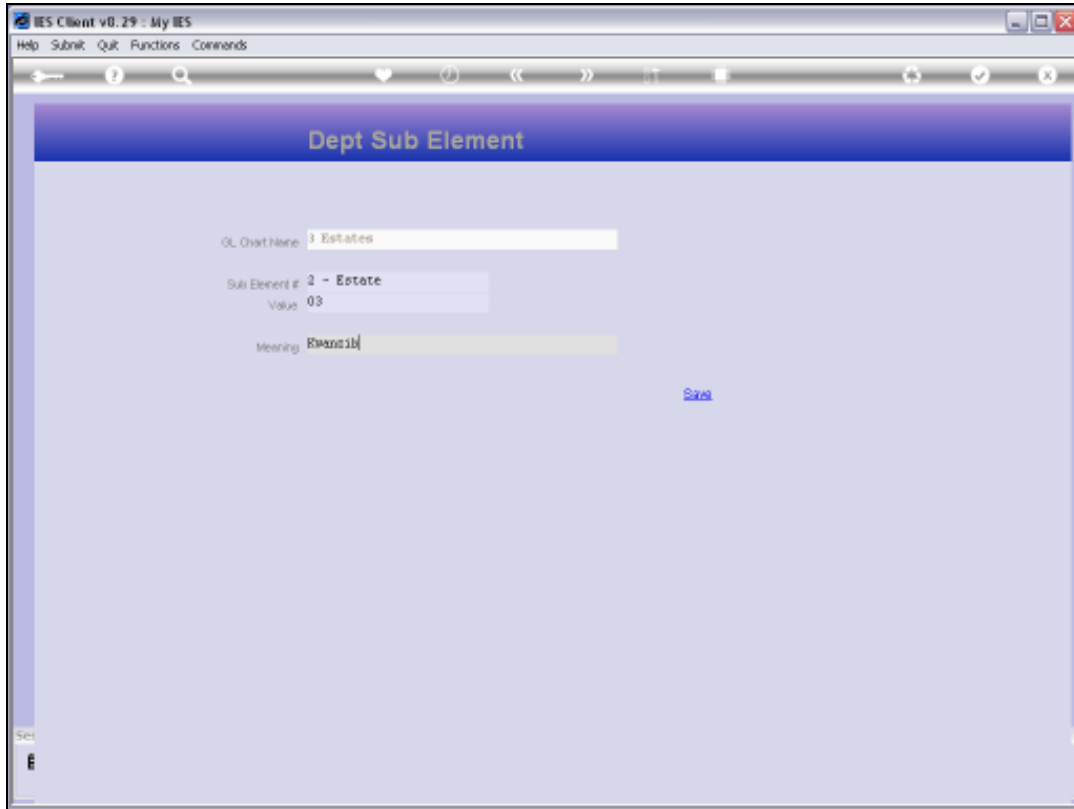
Slide 53

Slide notes:



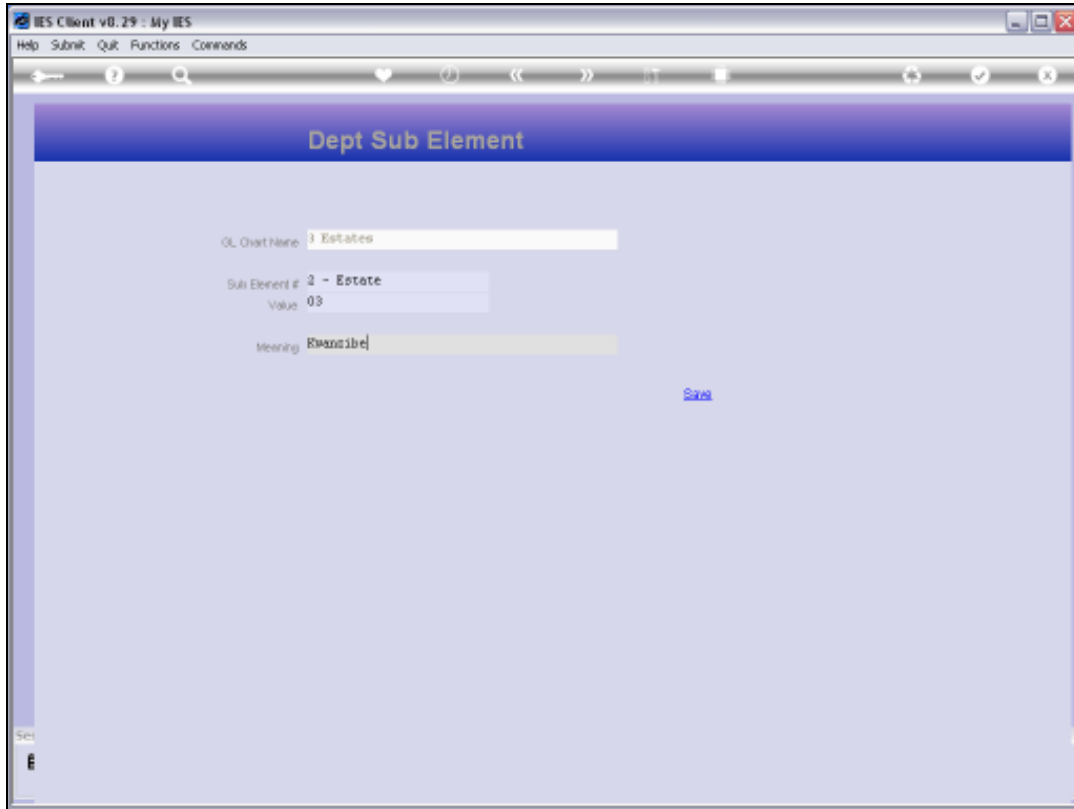
Slide 54

Slide notes:



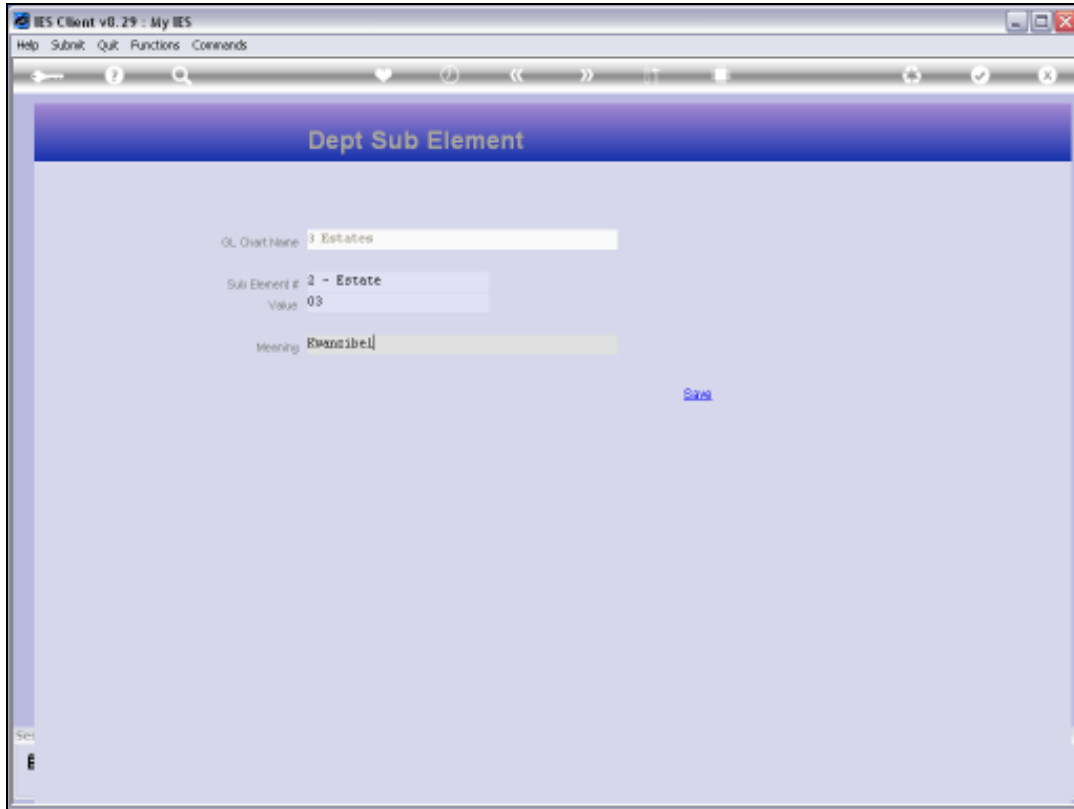
Slide 55

Slide notes:



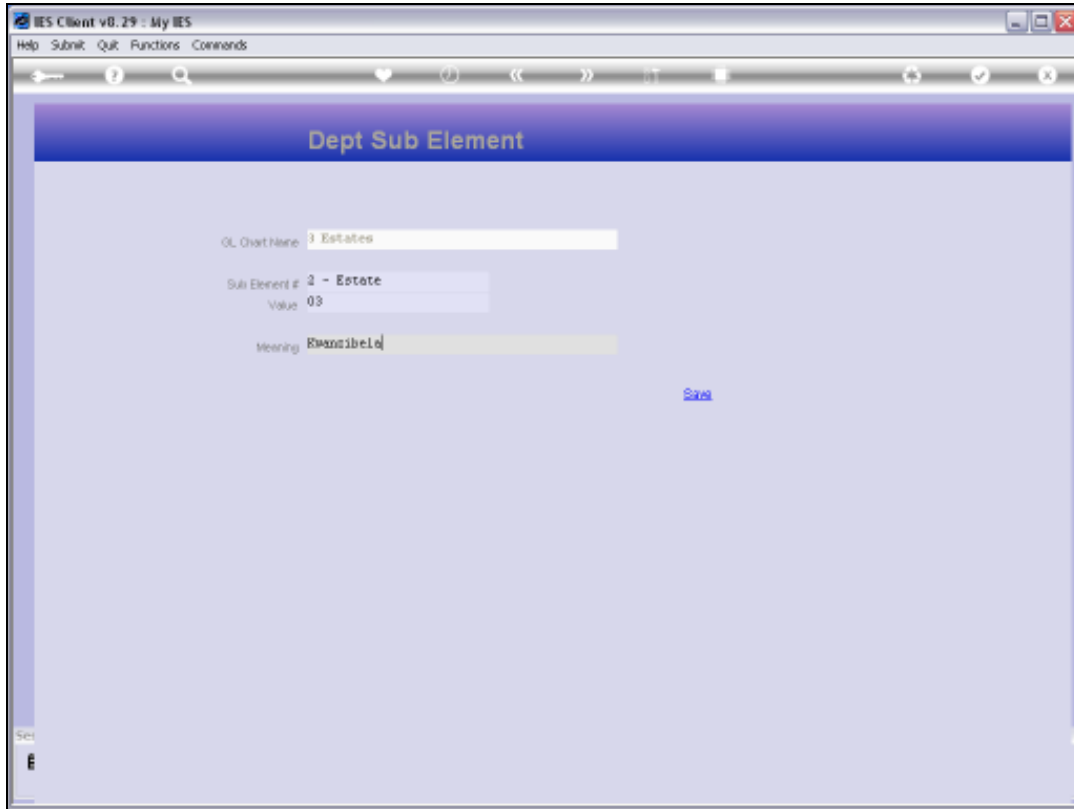
Slide 56

Slide notes:



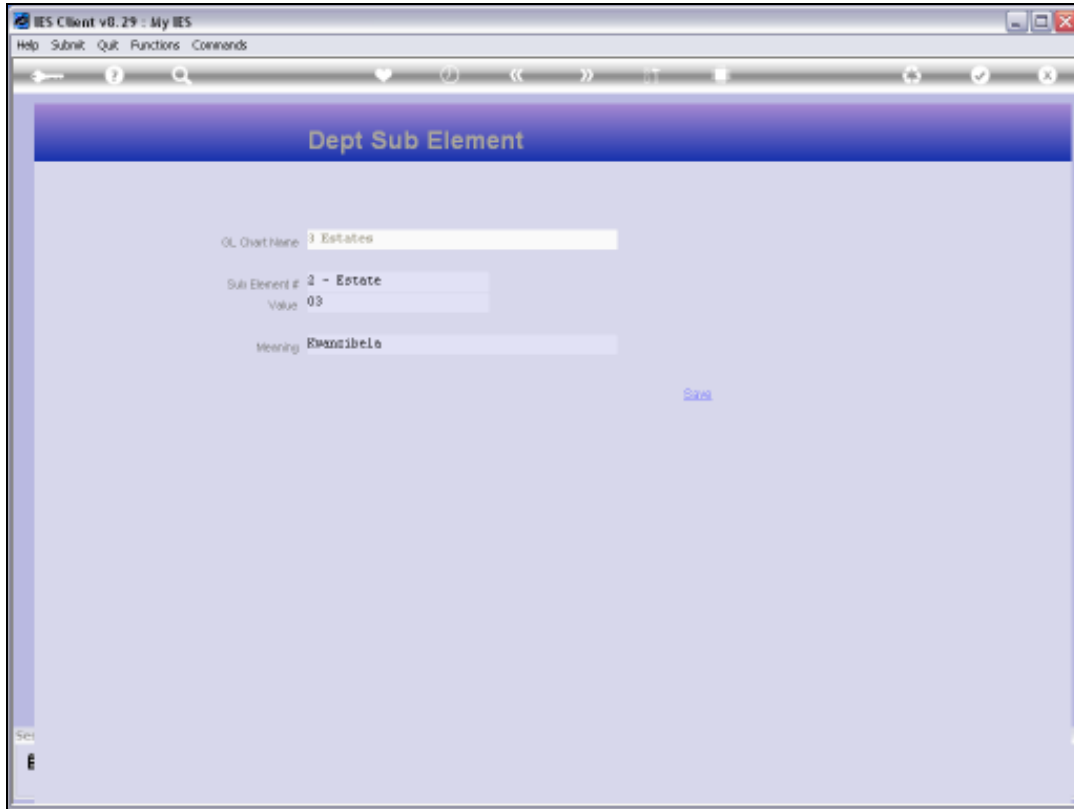
Slide 57

Slide notes:



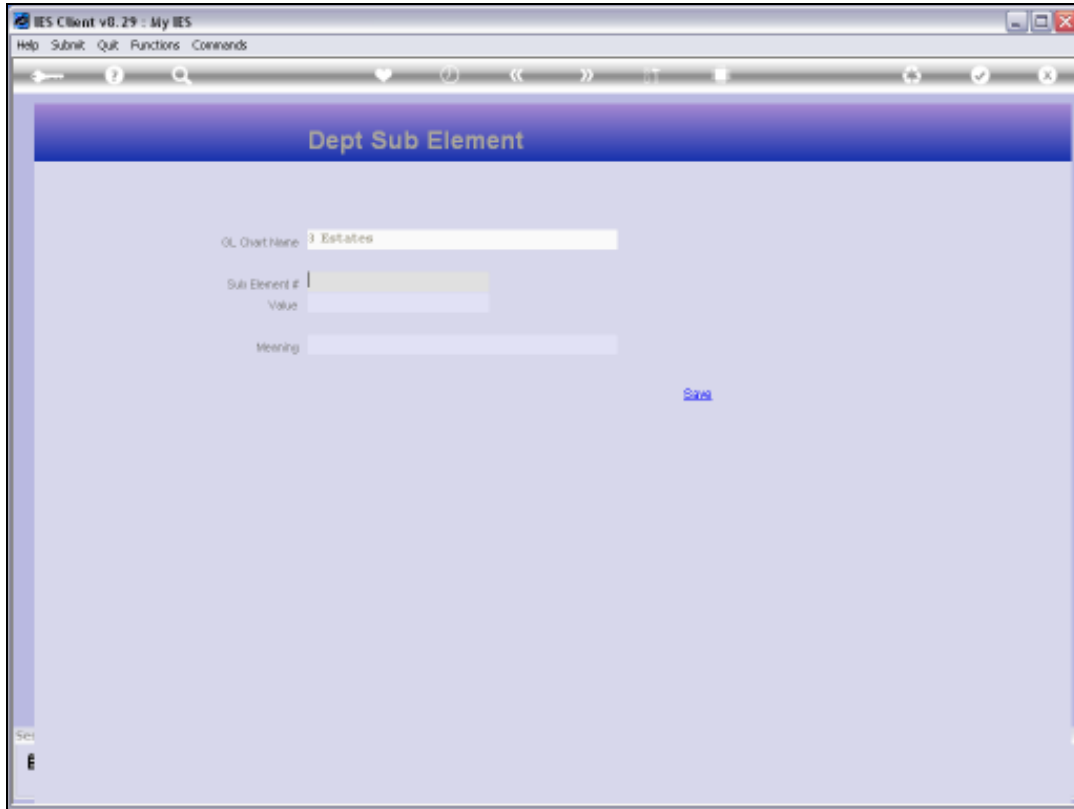
Slide 58

Slide notes:



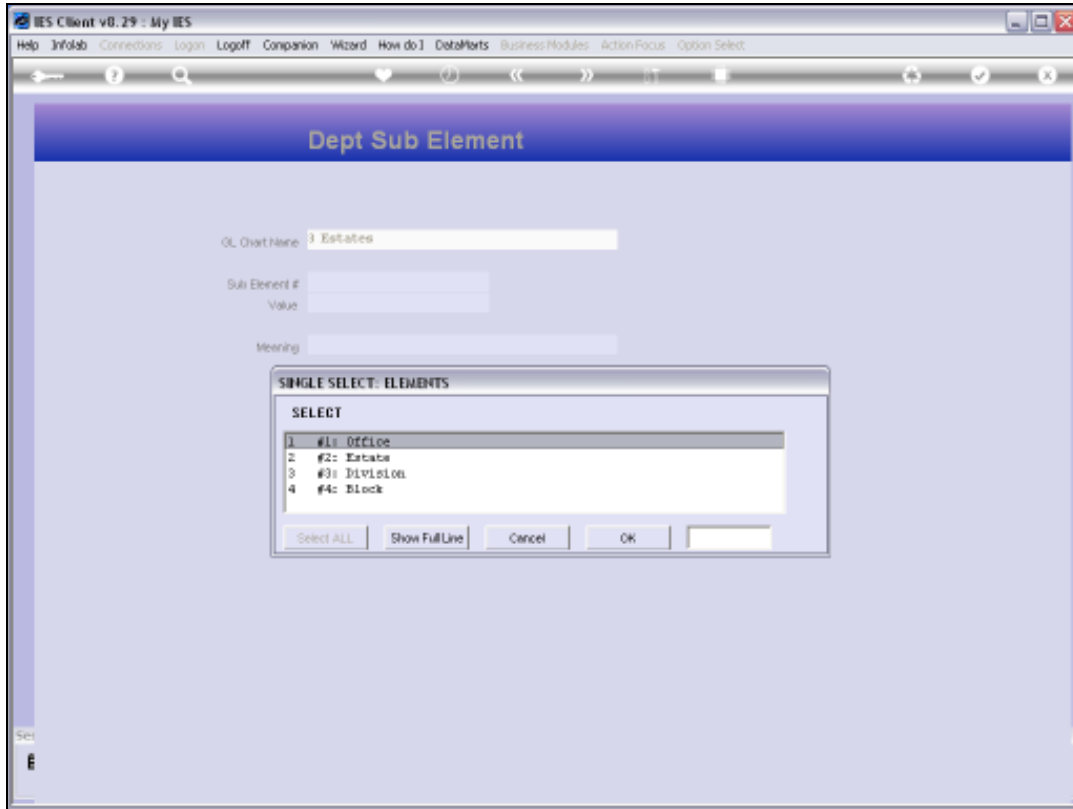
Slide 59

Slide notes: It is not mandatory to provide Names for all the possible Values. It is just more meaningful and easier for the User when using structural Lookups on the Ledger, if the Values have Names.



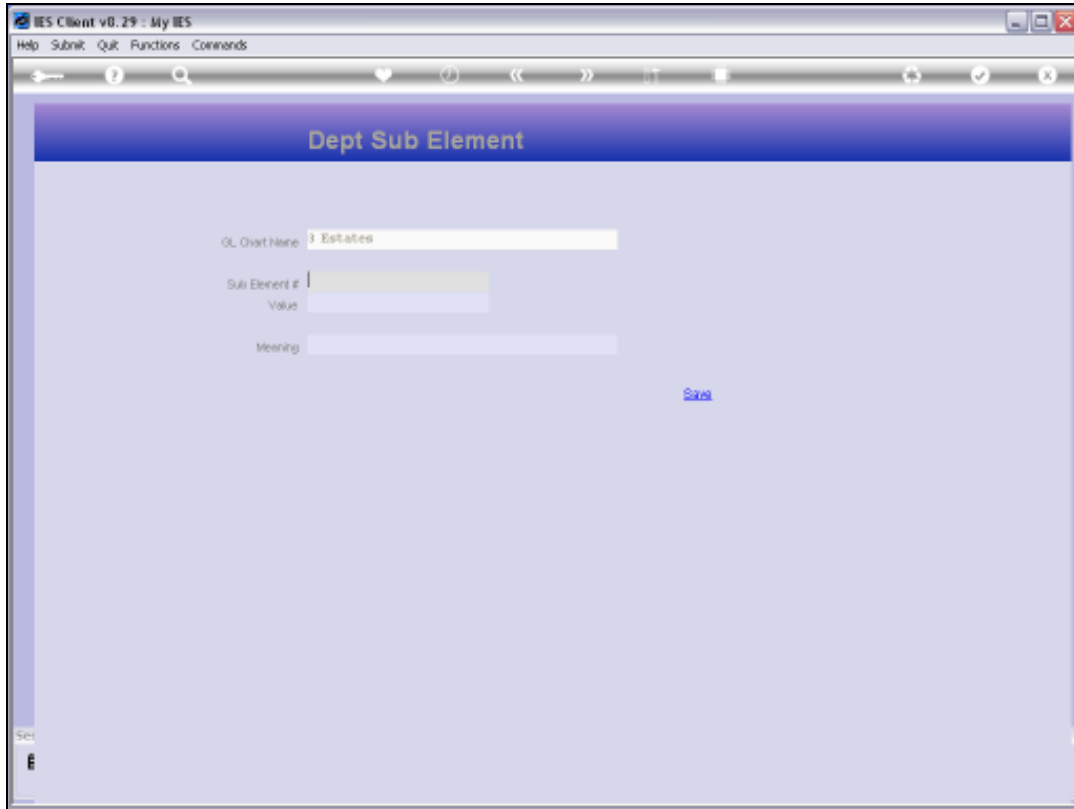
Slide 60

Slide notes:



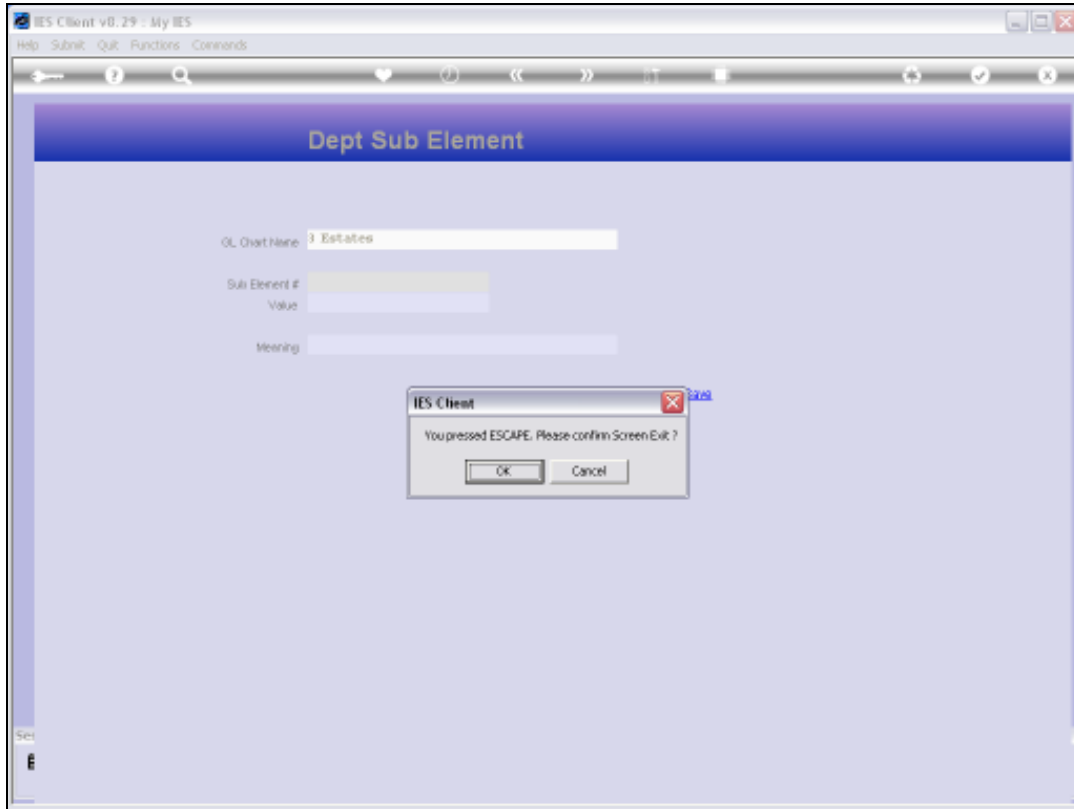
Slide 61

Slide notes:



Slide 62

Slide notes:



Slide 63

Slide notes:

IES Client v8.29 - My IES

Help | MyJob | Connections | Login | Logout | Companion | Wizard | How do I... | DataMarts | Business Rules | Admin Tools | Admin Help

Account Code Primary Structure

Chart Name: [Save](#)

Dept Sub Element Names: - [Sub Element Names](#)

Choose length for each primary element.

Department:

Optional Element: - Digits or Extra Element: Name:

Activity:

Cost Code:

Start with 1 and define only the sub elements to be used on Dept (optional)

Dept Element	Value	Extract
Dept Element 1	Office	Extract 2,1
Dept Element 2	Estote	Extract 3,2
Dept Element 3	Disruption	Extract 5,1
Dept Element 4	Block	Extract 6,2
Dept Element 5		Extract
Dept Element 6		Extract
Dept Element 7		Extract

Slide 64
Slide notes:



Slide 65

Slide notes: