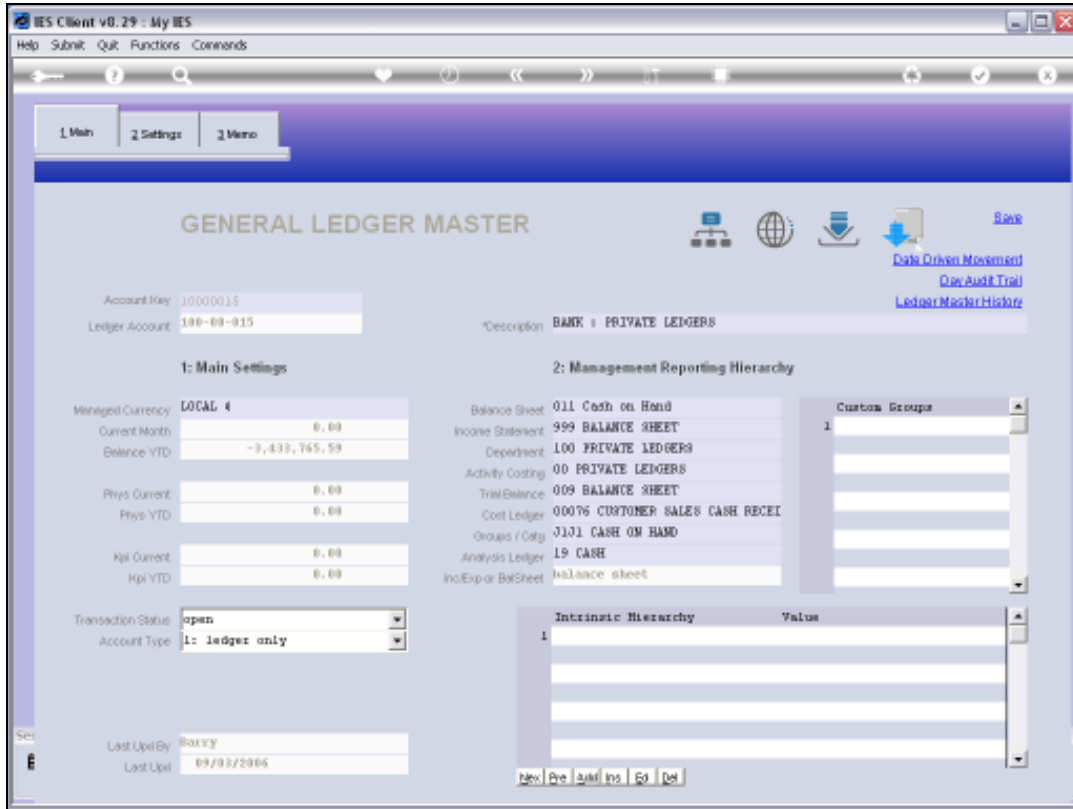


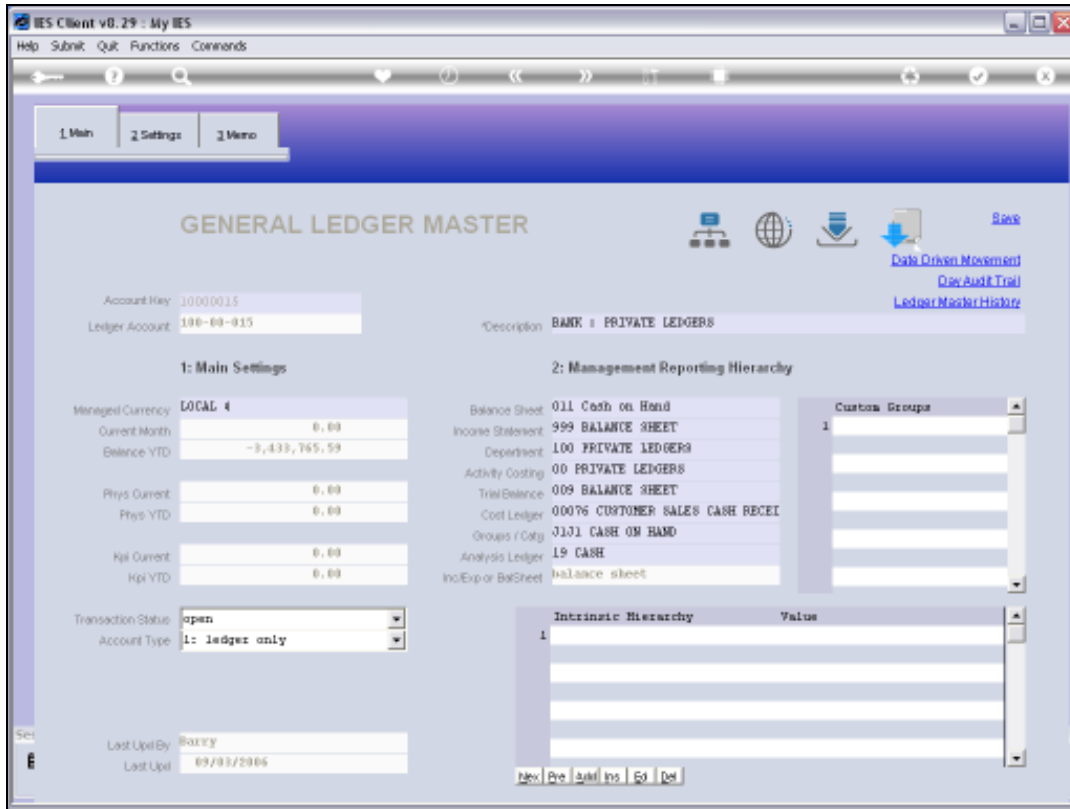
Slide 4

Slide notes: A Chart of Accounts is a list of General Ledger Accounts that are organized in a way that suits the local Enterprise. In IES, the General Ledger can include multiple such Ledgers, each with many Accounts that are structured according to the Chart of the Current Ledger. The Chart Wizard is a tool that helps us to easily construct, generate, modify and generally organize a Ledger.

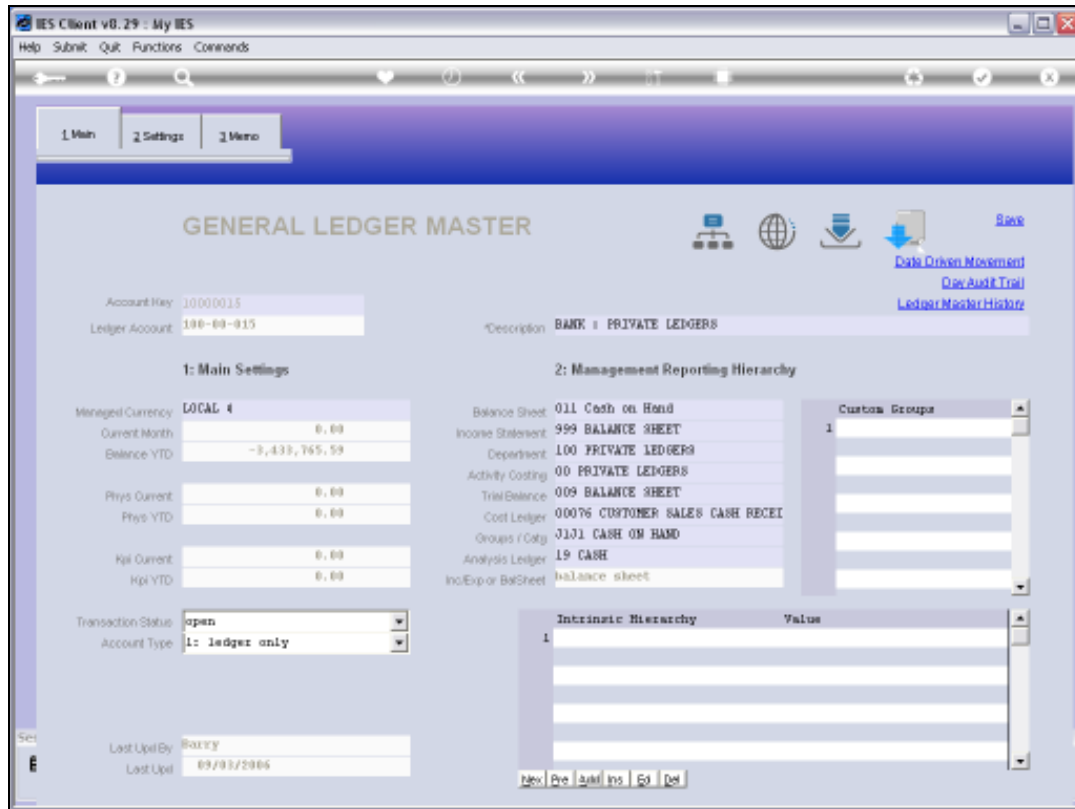


Slide 2

Slide notes: This is an example of a General Ledger Account in IES. There is a native Account Code which is masked and displayed in a readable format.

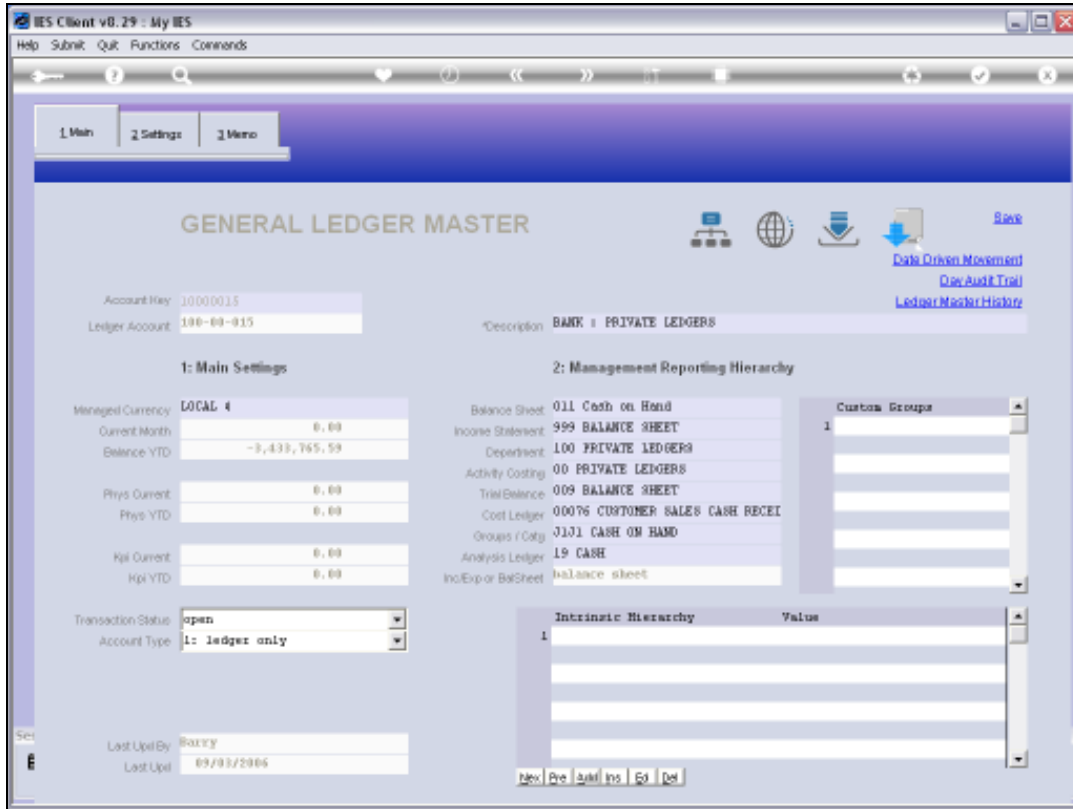


Slide 3
Slide notes:

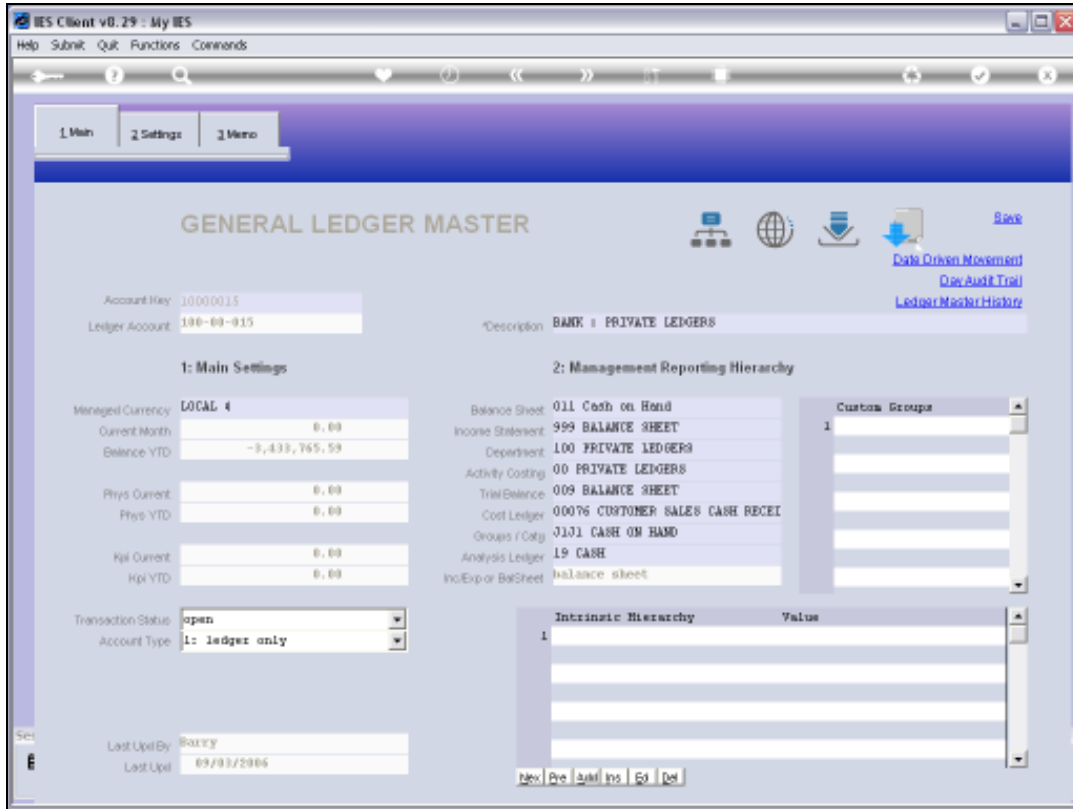


Slide 4

Slide notes: Each Account includes a set of Report Flags that are most useful in categorizing and selecting GL Accounts, and these Report Flags are independent of the Account Code, i.e. can be changed to Values that do not have to be represented in the Account Code.



Slide 5
Slide notes:



Slide 6
Slide notes: