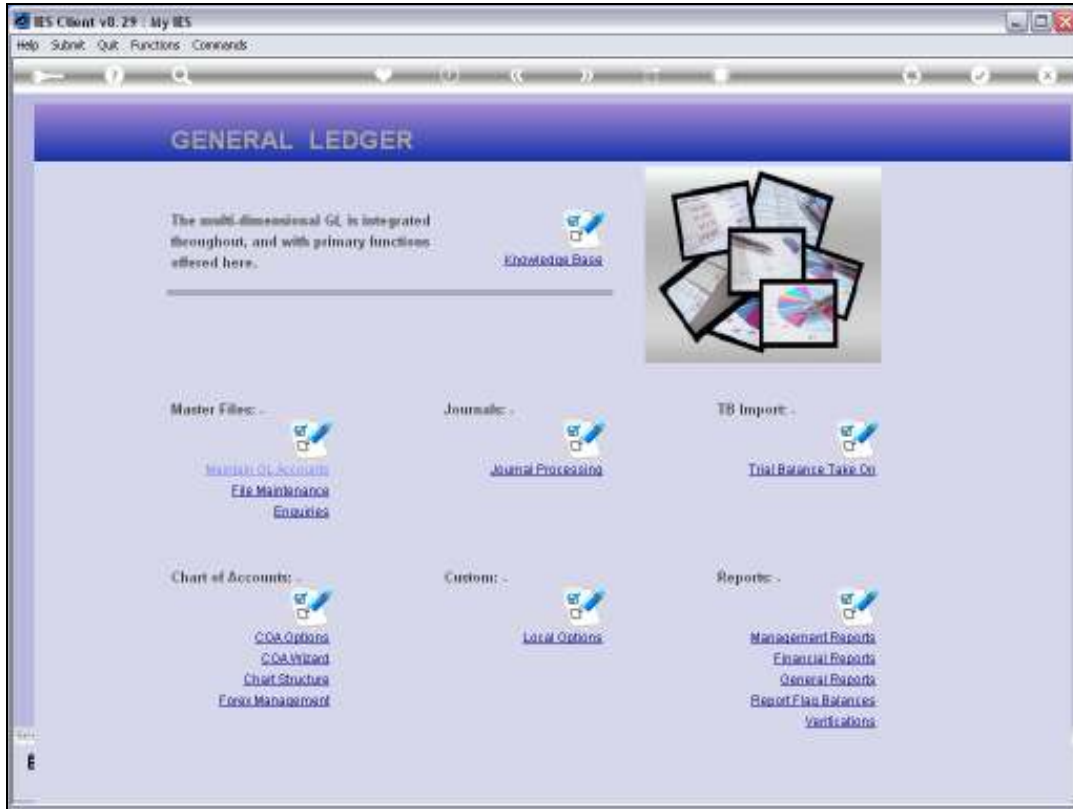




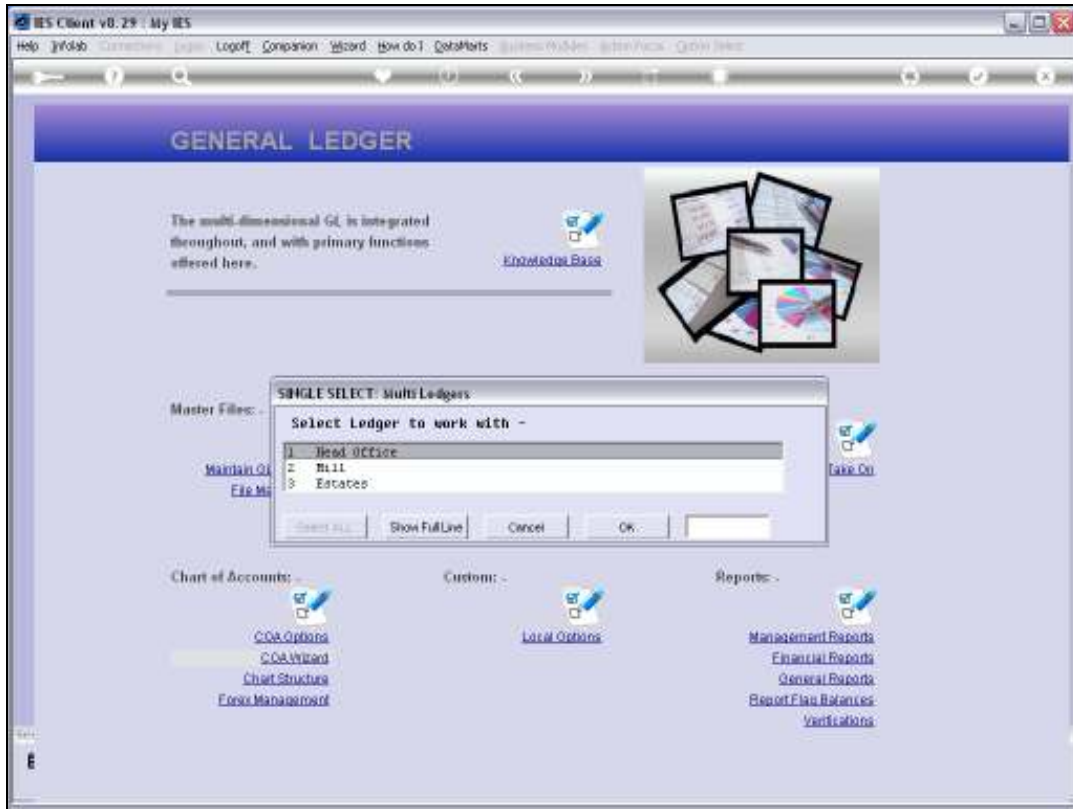
Slide 1

Slide notes: The Chart of Accounts wizard is entered from the General Ledger menu.



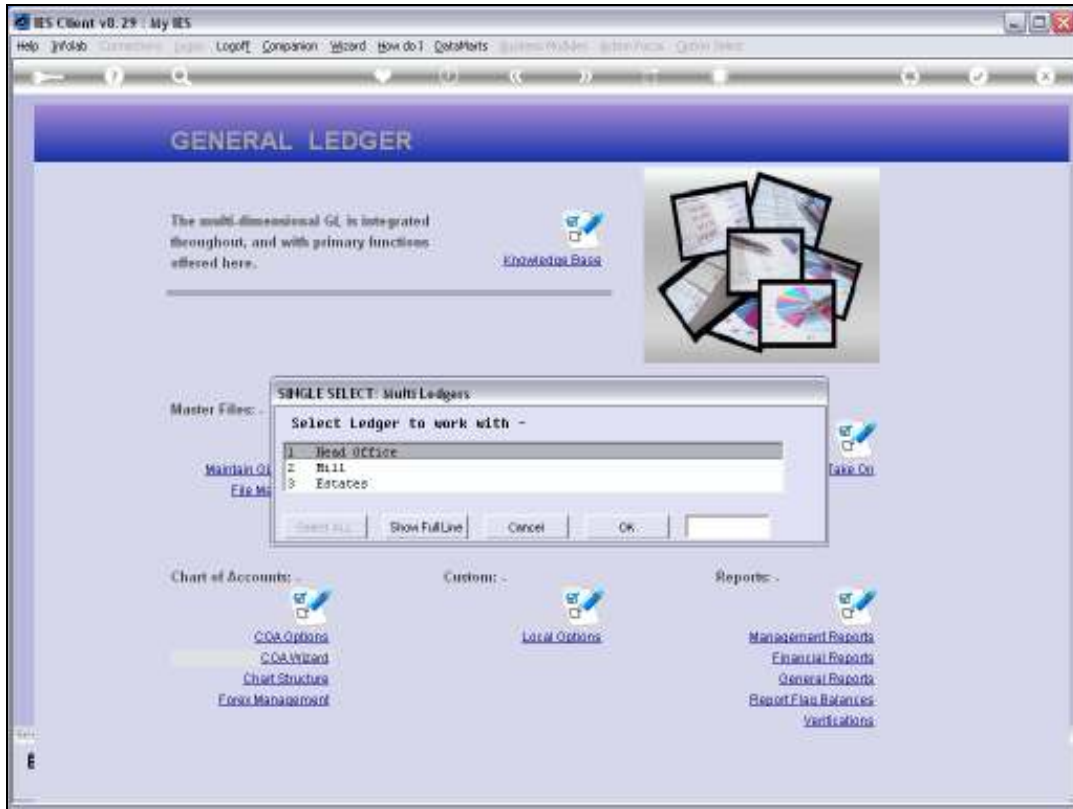
Slide 2

Slide notes: We find it at the Chart of Accounts action menu.

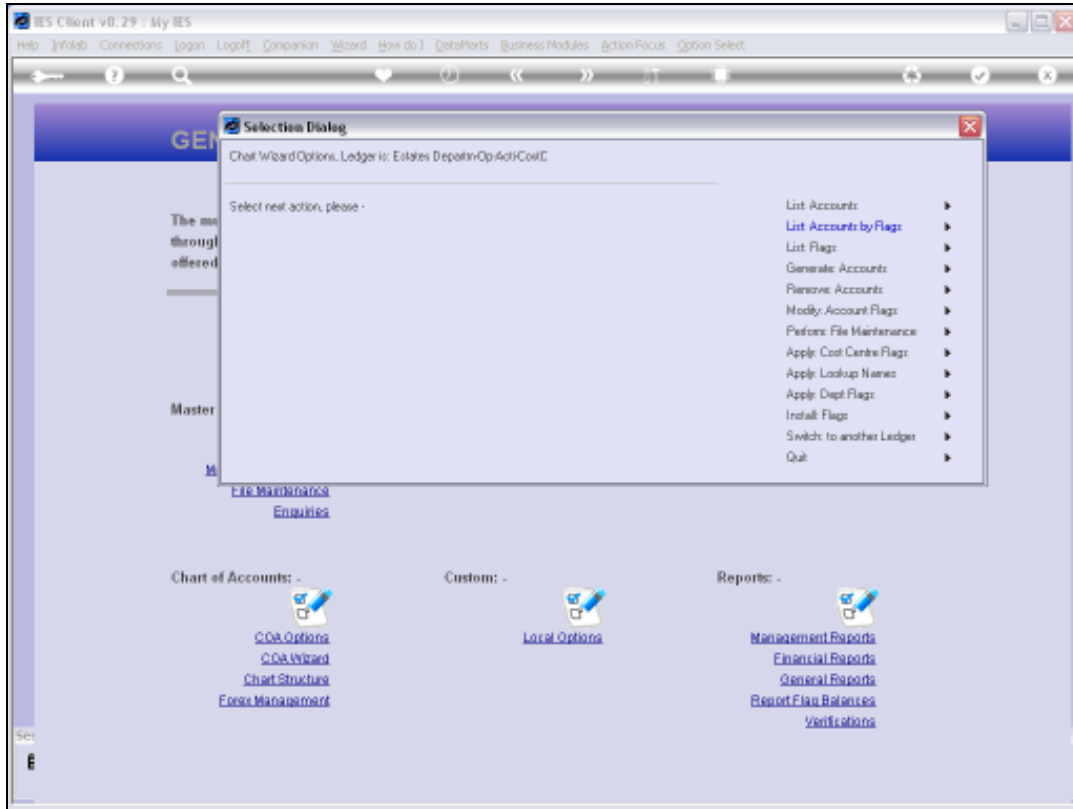


Slide 3

Slide notes: If there is more than 1 Ledger, we may select which Ledger to work with.



Slide 4
Slide notes:



Slide 5

Slide notes: From here we may use any of the wizard options on the Chart of Accounts for the selected Ledger.