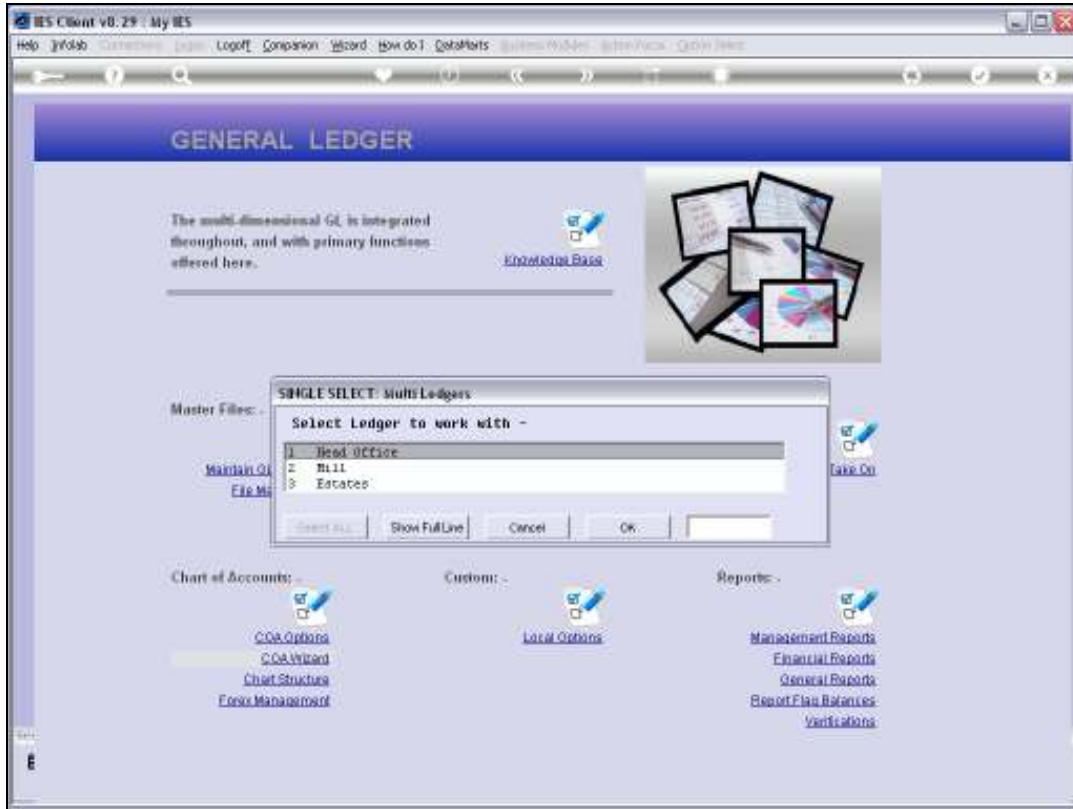


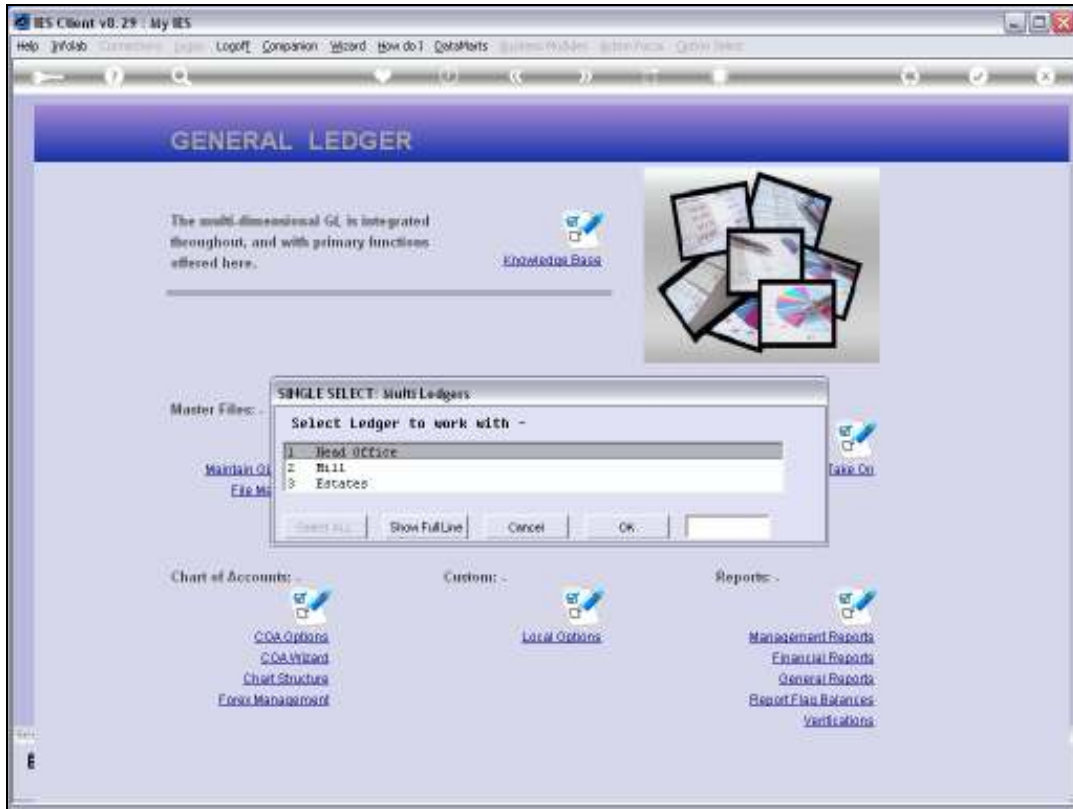


Slide 1

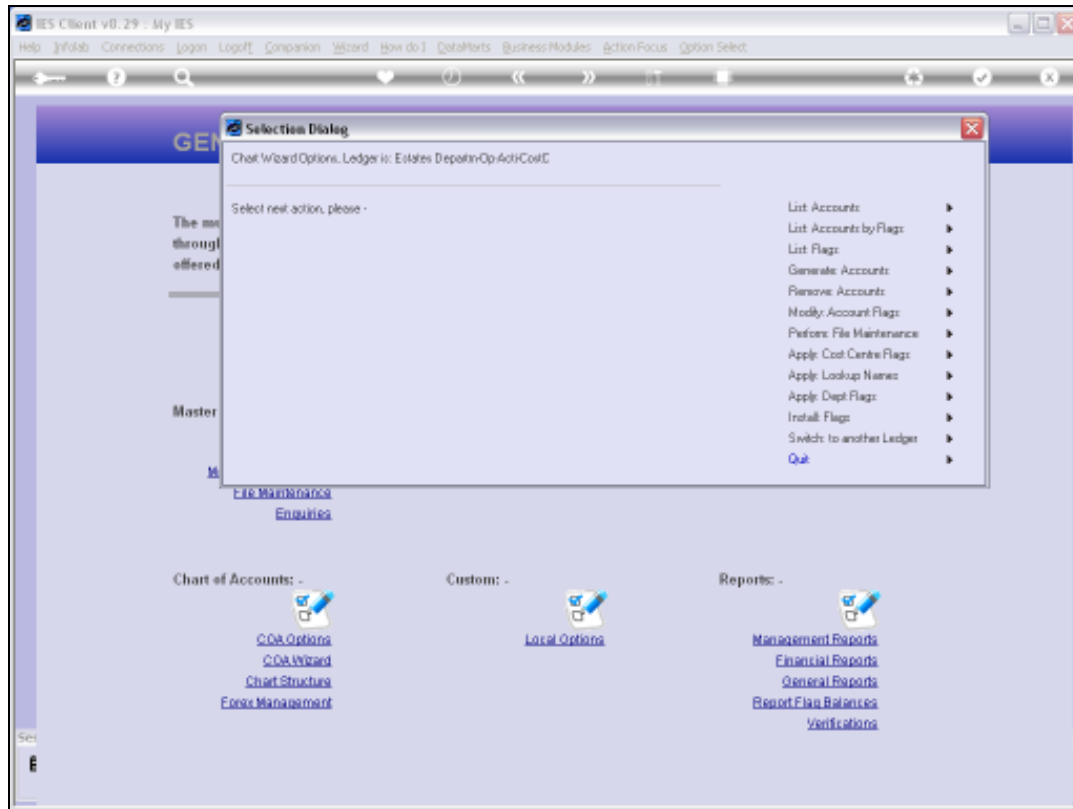
Slide notes: The Chart Wizard is entered from the General Ledger menu, and with the necessary access privilege, it can be used on any Ledger listed in the Chart structure, and at any time.



Slide 2
Slide notes:

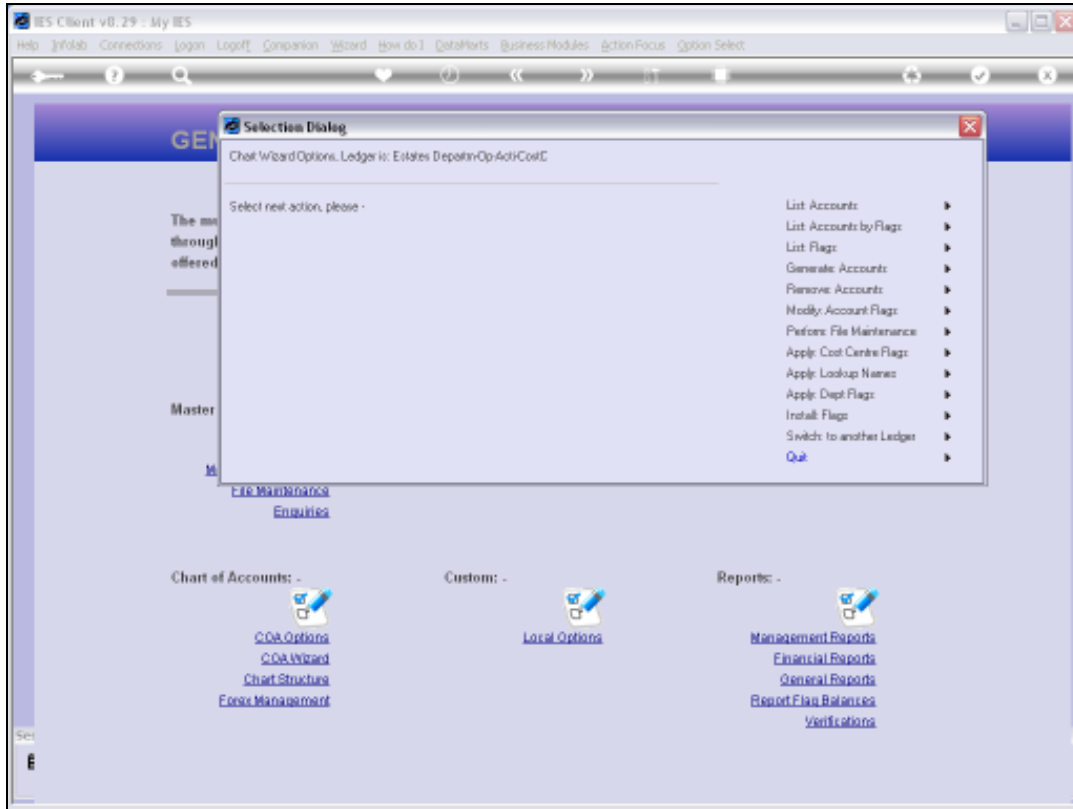


Slide 3
Slide notes:



Slide 4

Slide notes: After selecting a Ledger to work with, the Chart wizard options are all available. When there is no Chart in place yet, it can be used to generate and construct a Chart. When there is already a working Chart of Accounts that is in use, then the Chart wizard can still be used to extend the Chart by generating new Accounts, modifying Accounts and removing qualifying Accounts.



Slide 5

Slide notes: So the Chart wizard is useful and available at all times.