

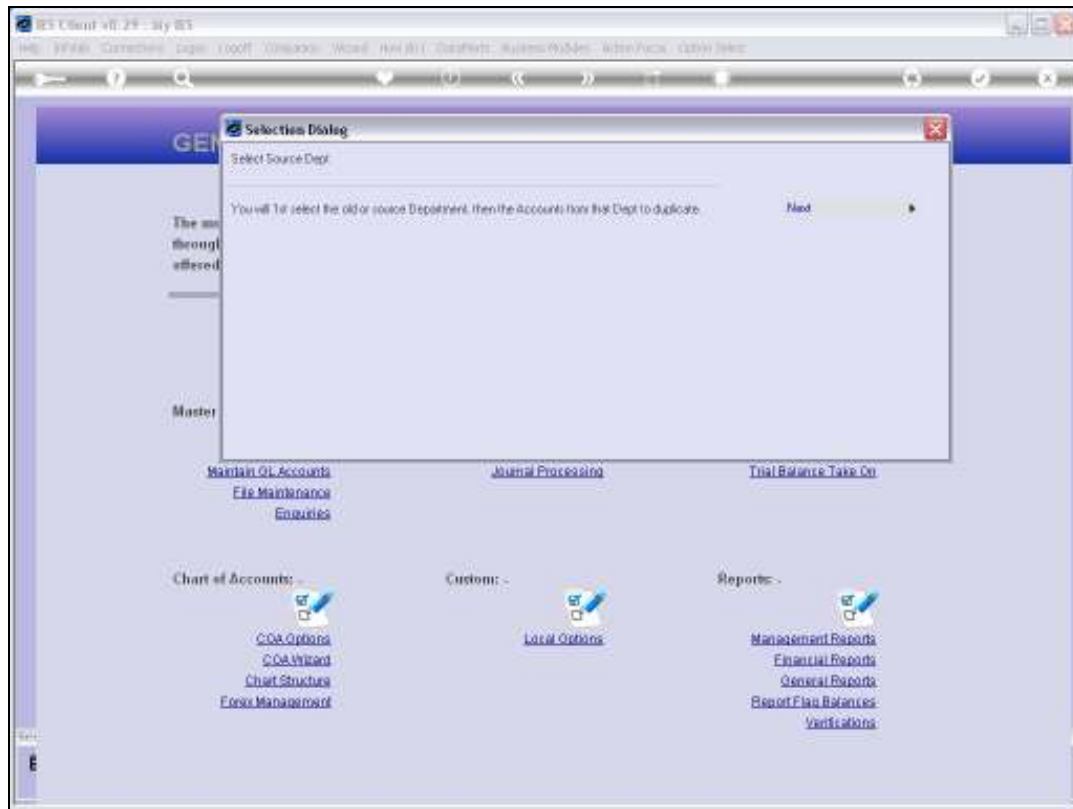
Slide 1

Slide notes: The Chart wizard can generate new Ledger Accounts in 3 ways.



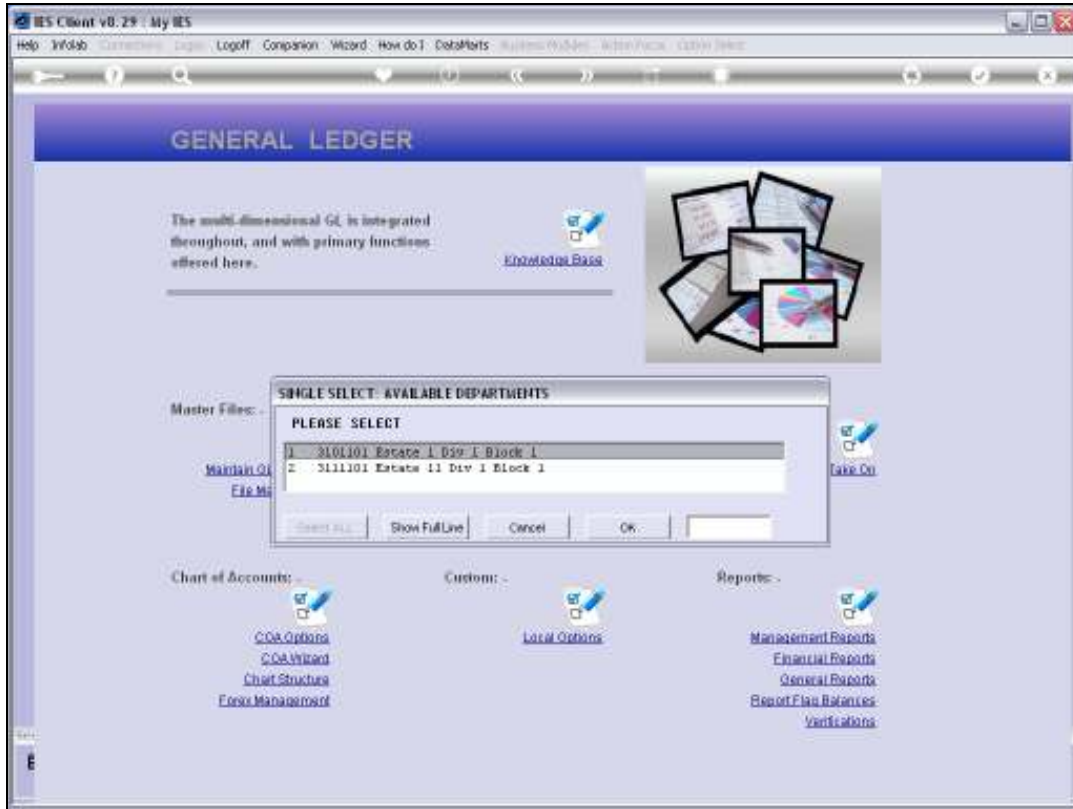
Slide 2

Slide notes: In this case, we will see how we can generate a Department set.

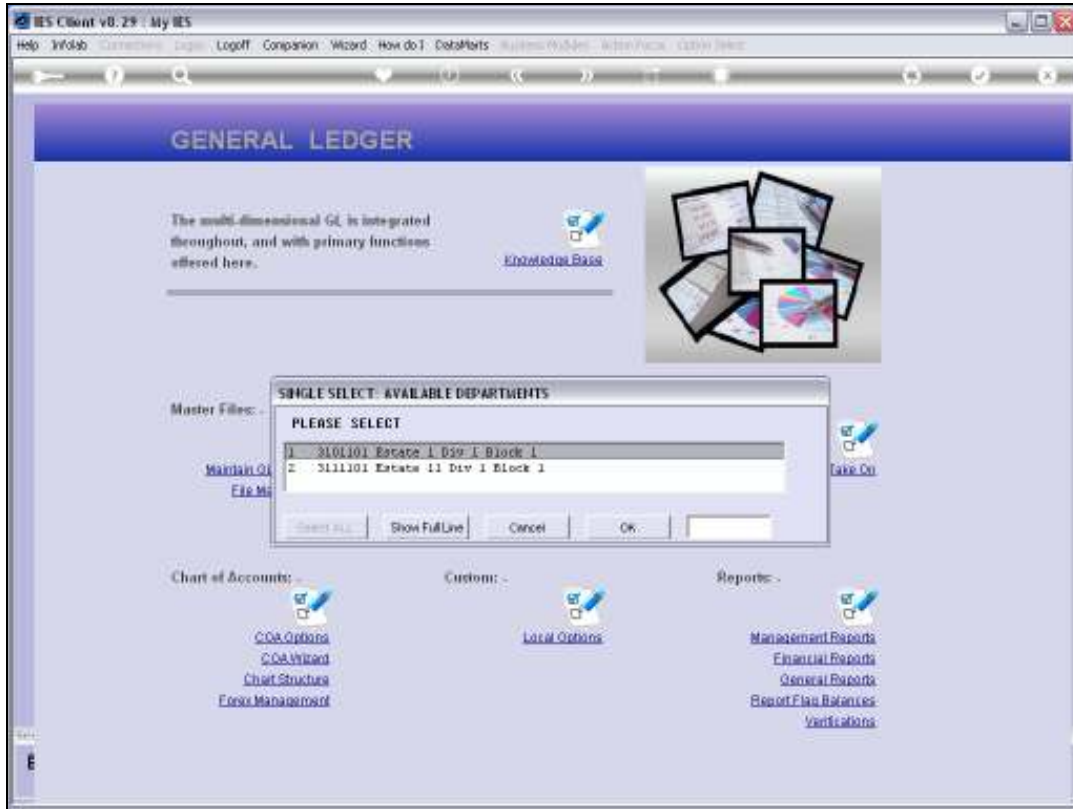


### Slide 3

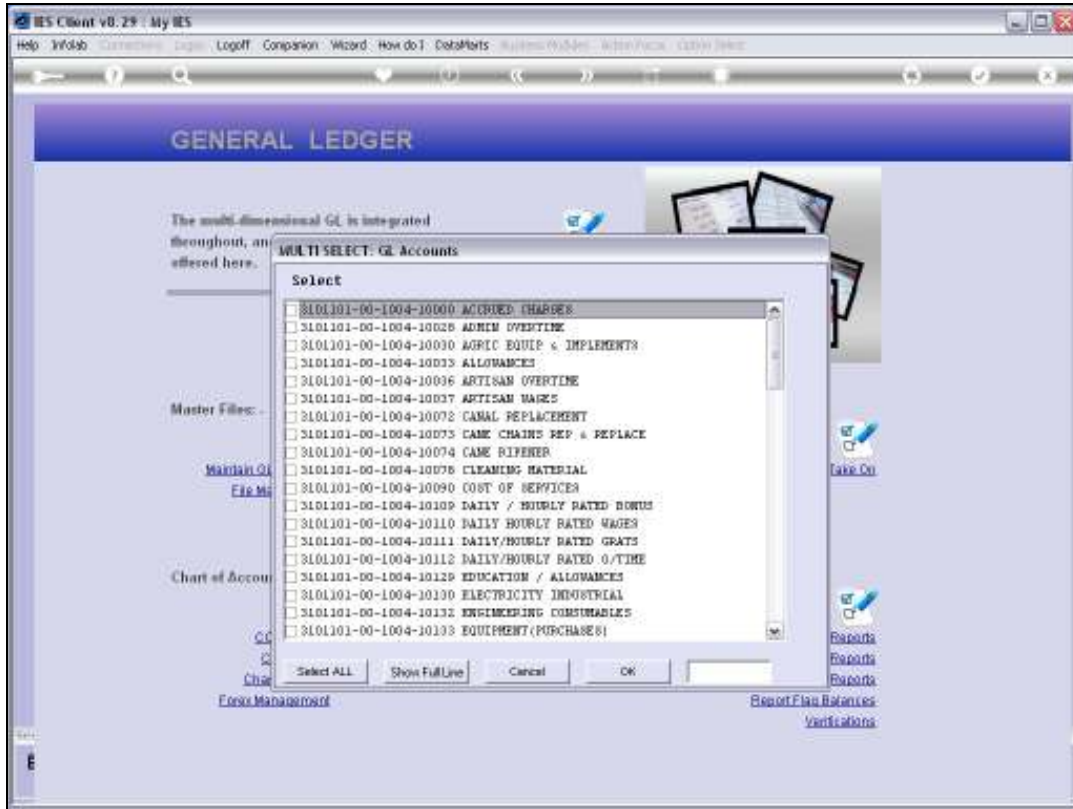
Slide notes: We select the 'from' Department and the 'to' Department, and we select the Accounts in the 'from' Department that should be re-created in the 'to' Department.



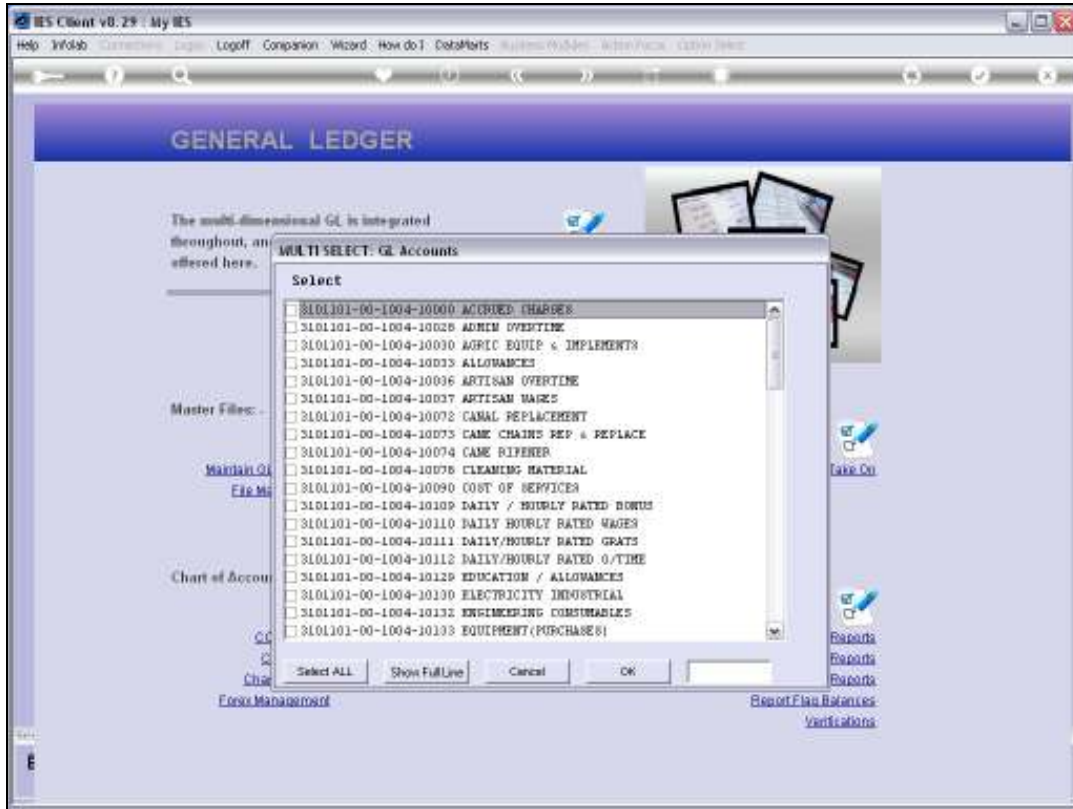
Slide 4  
Slide notes:



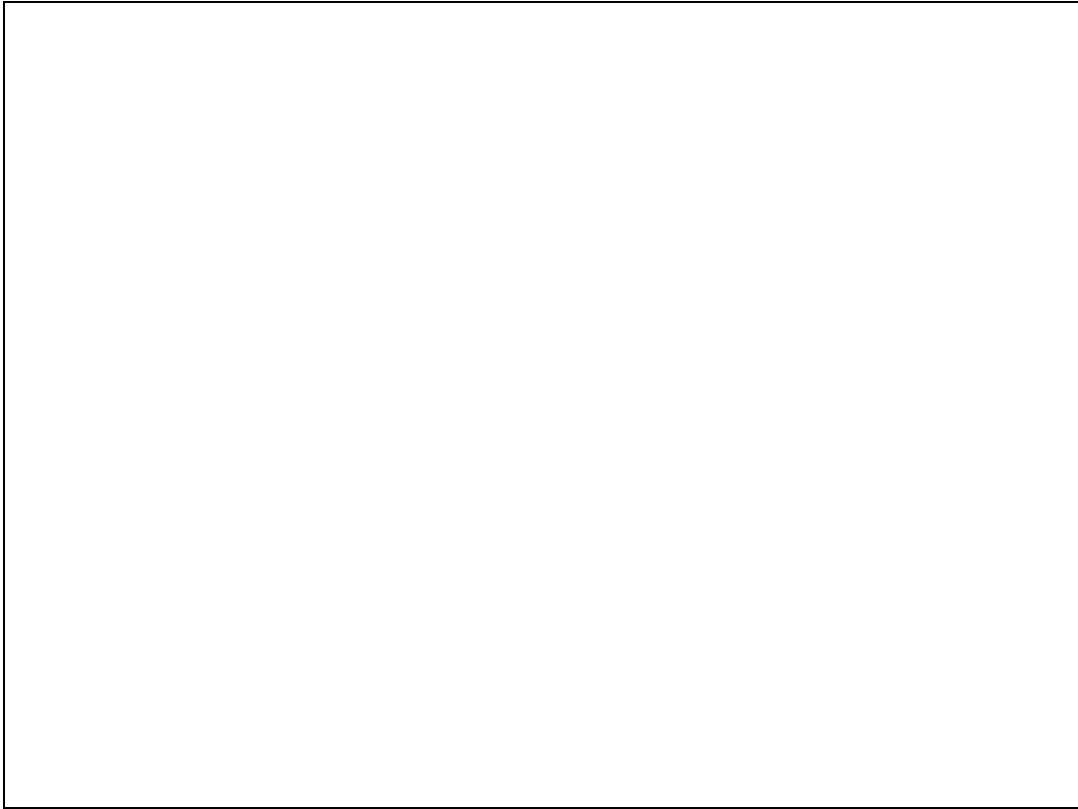
Slide 5  
Slide notes:



Slide 6  
Slide notes:



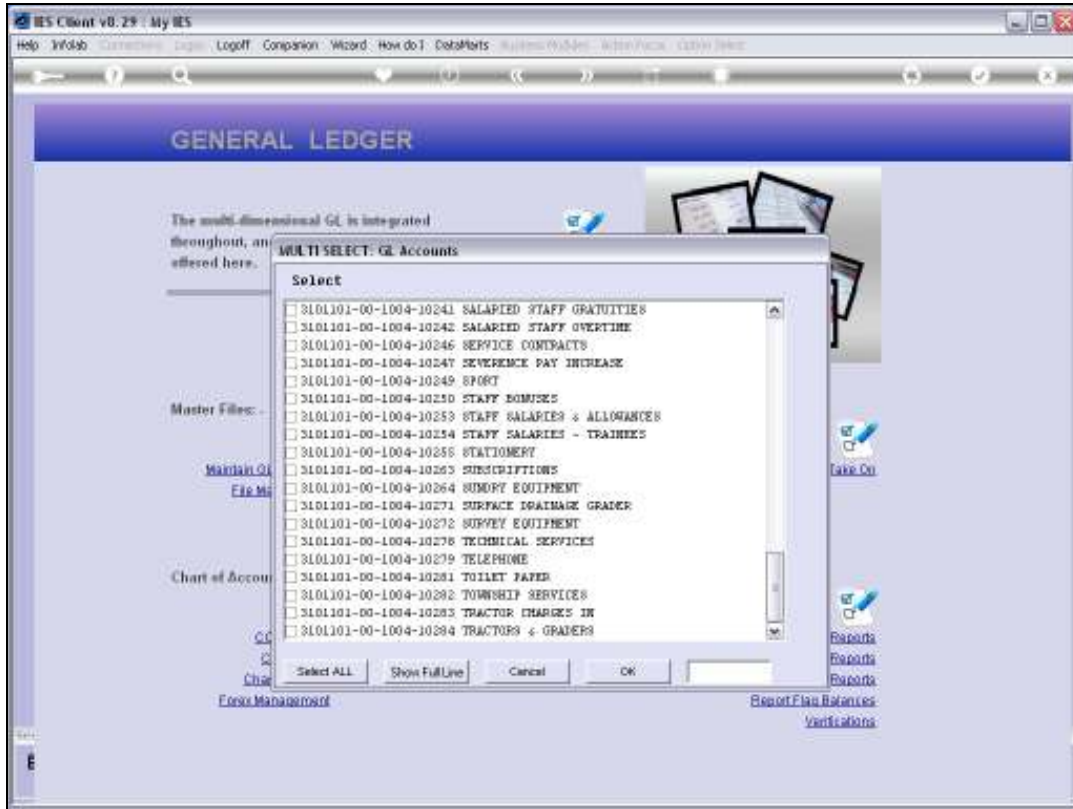
Slide 7  
Slide notes:



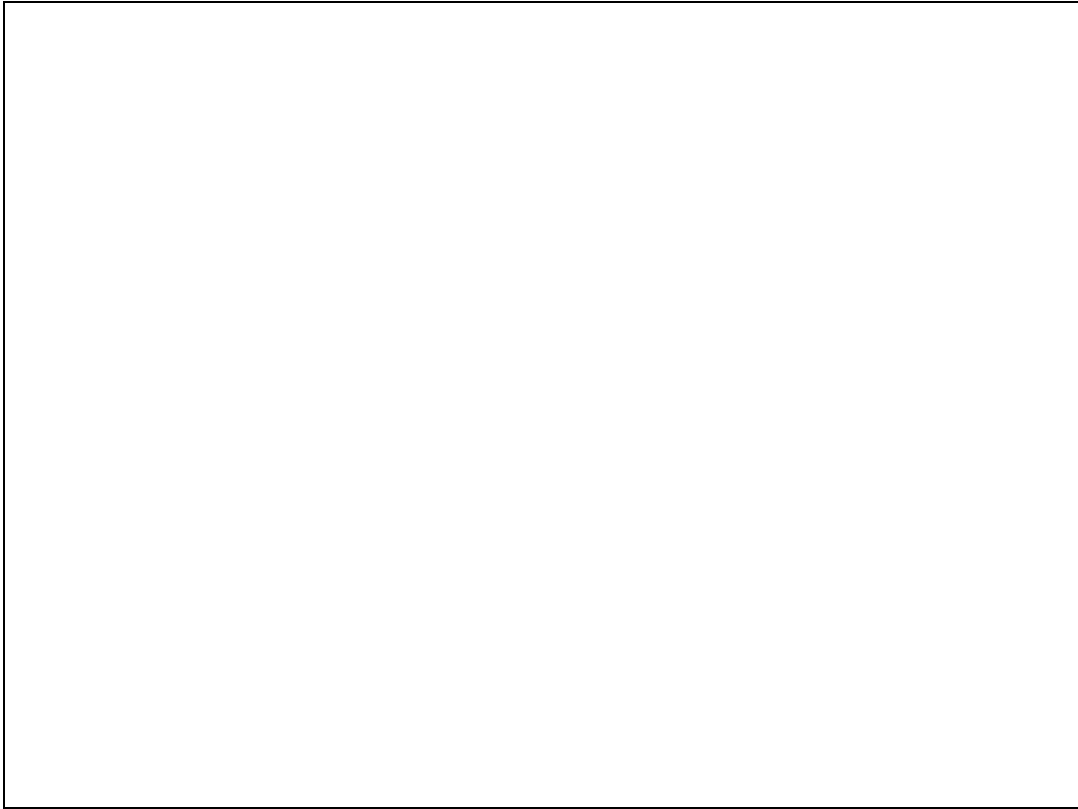
Slide 8

Slide notes: If we do not wish to include all the Accounts, then we have to select 1 by 1 the ones to do. In this case, we will select all Accounts that exist in the 'from' Department, to be duplicated in the 'to' Department...



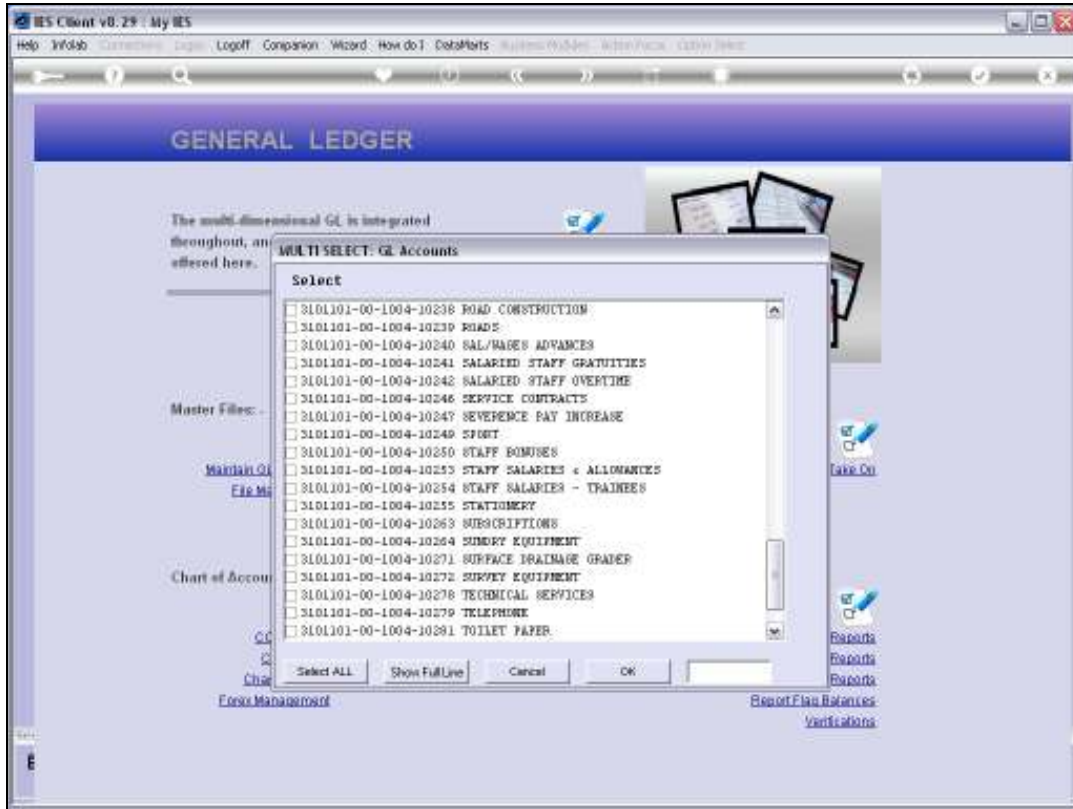


Slide 9  
Slide notes:

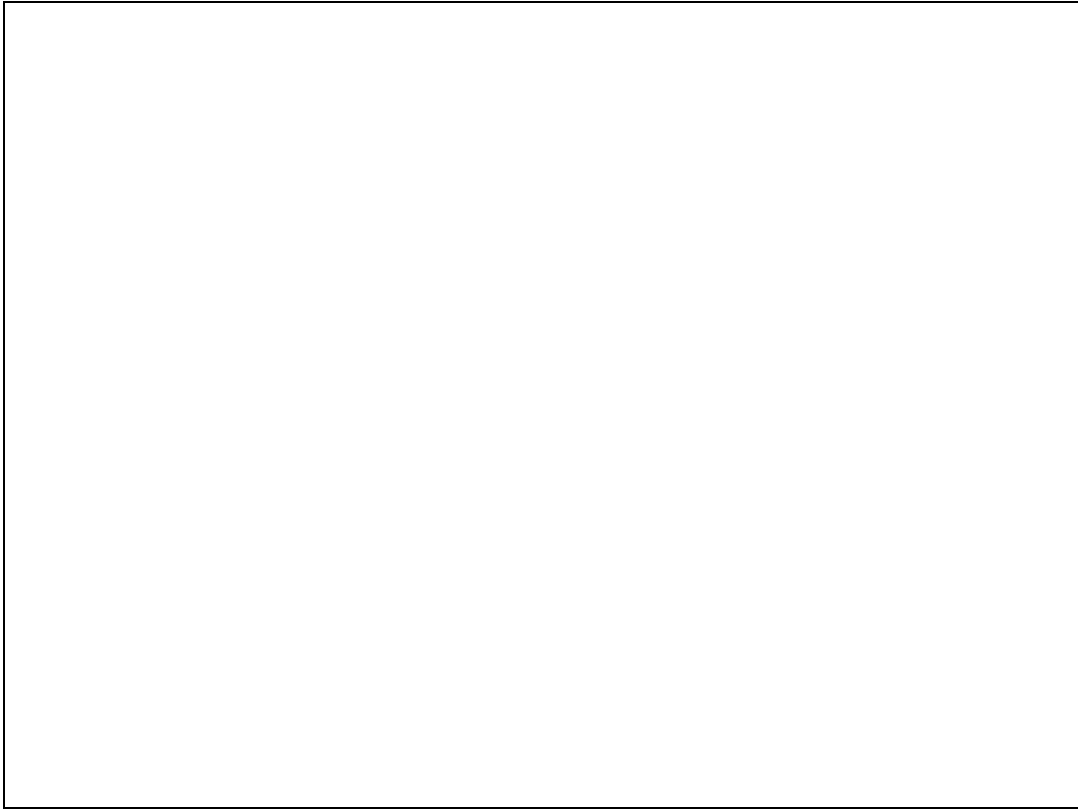


Slide 10

Slide notes:

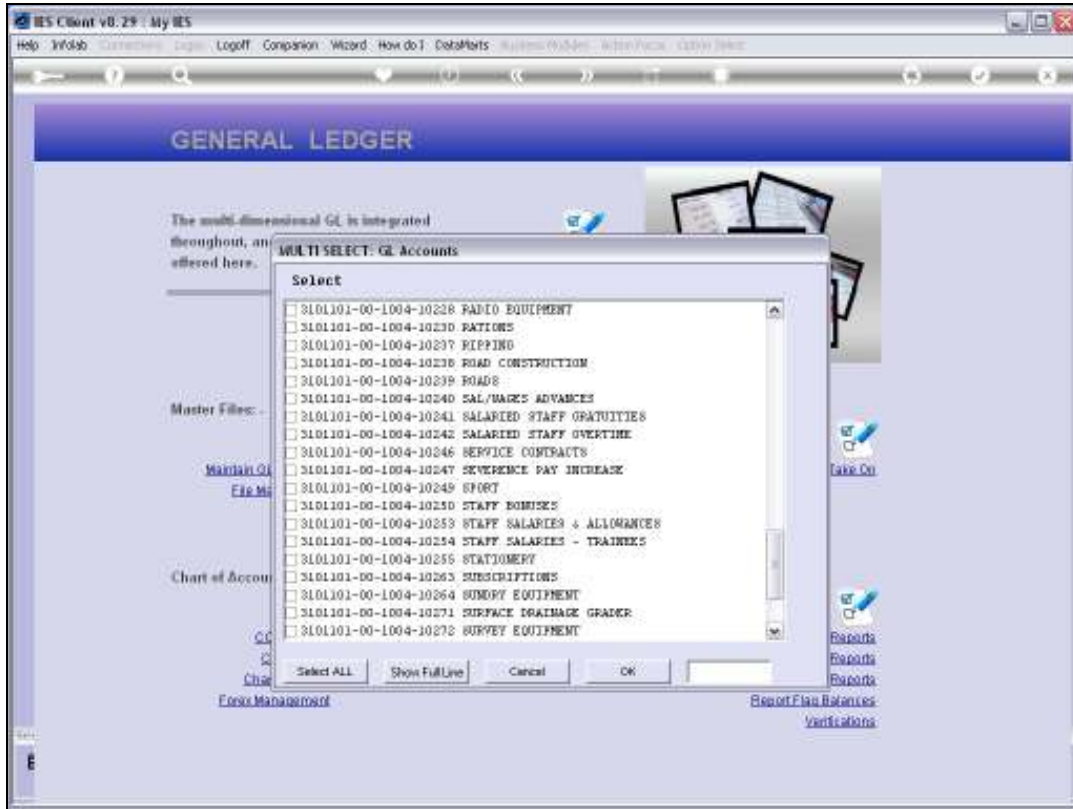


Slide 11  
Slide notes:

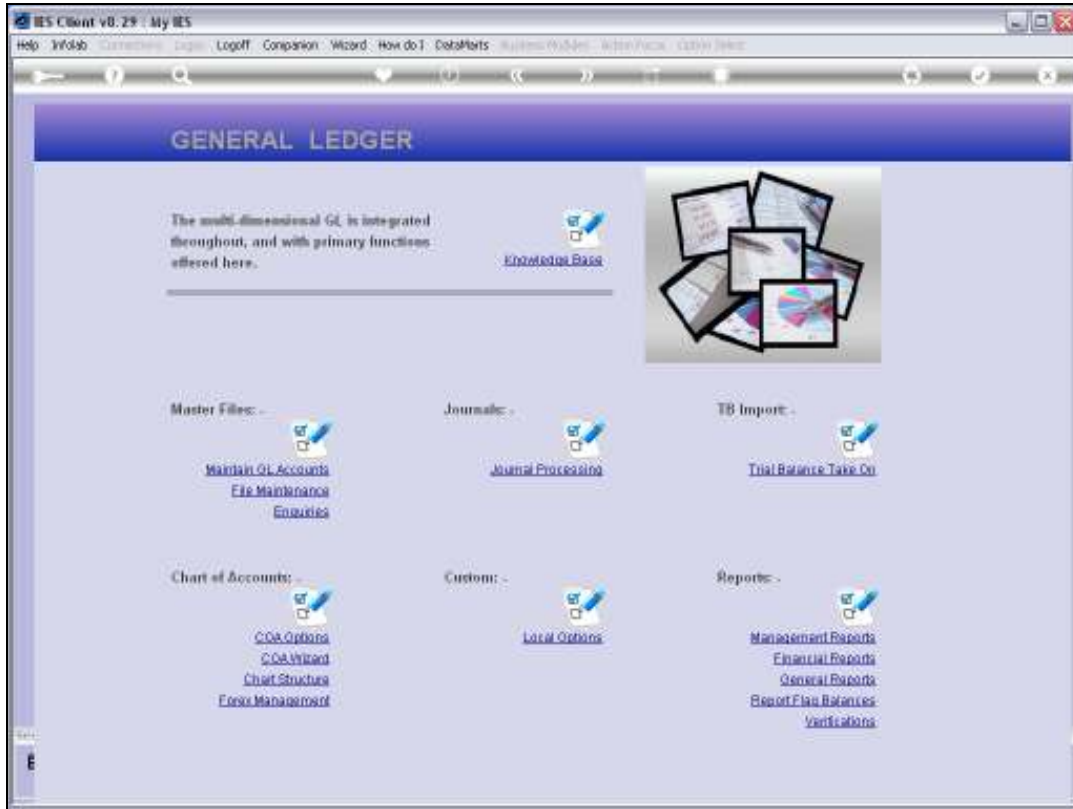


Slide 12

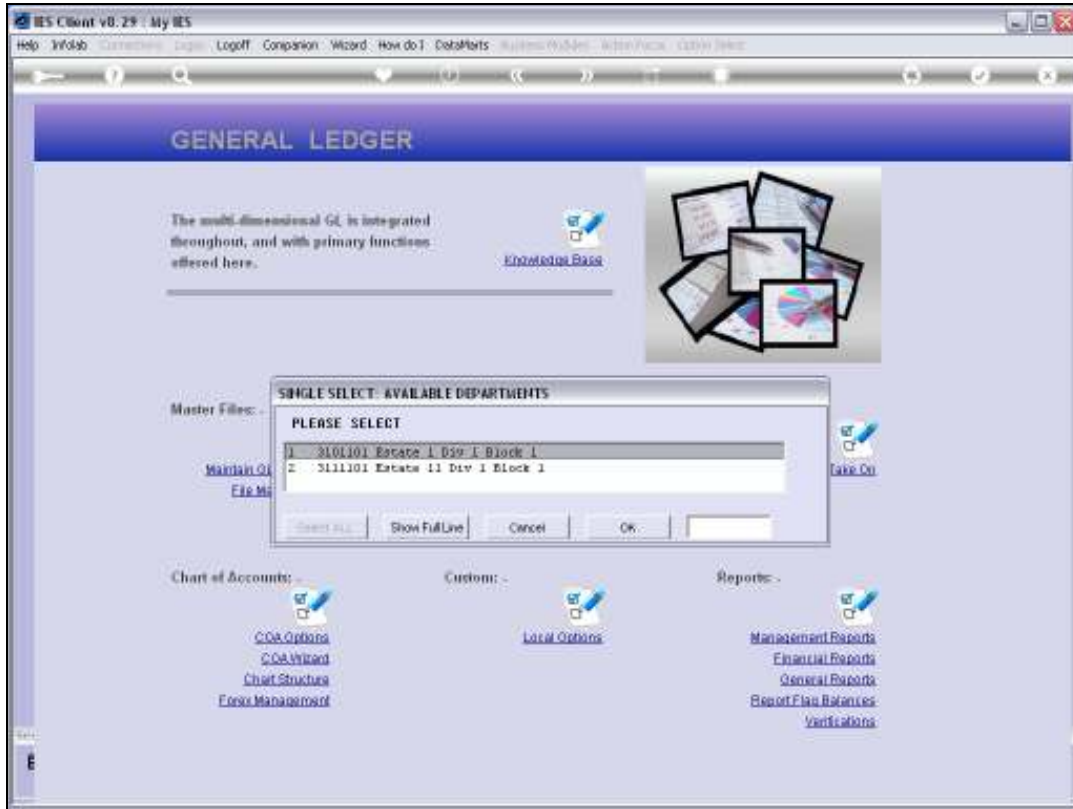
Slide notes:



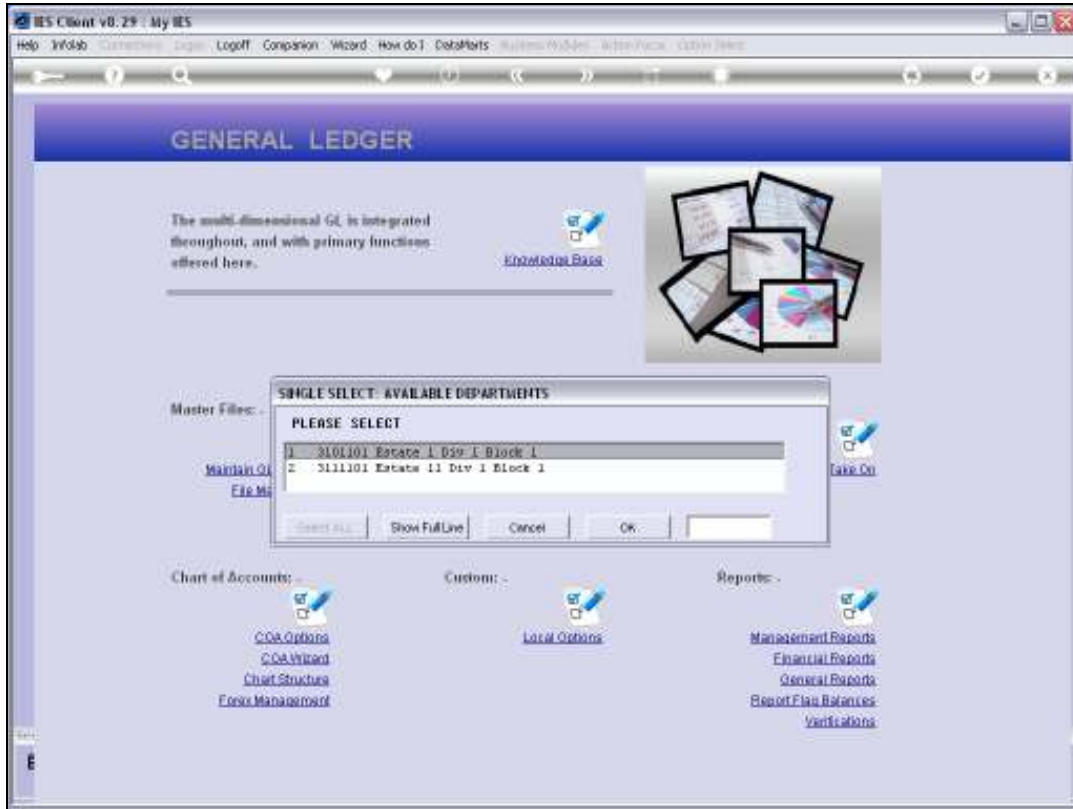
Slide 13  
Slide notes:



Slide 14  
Slide notes:



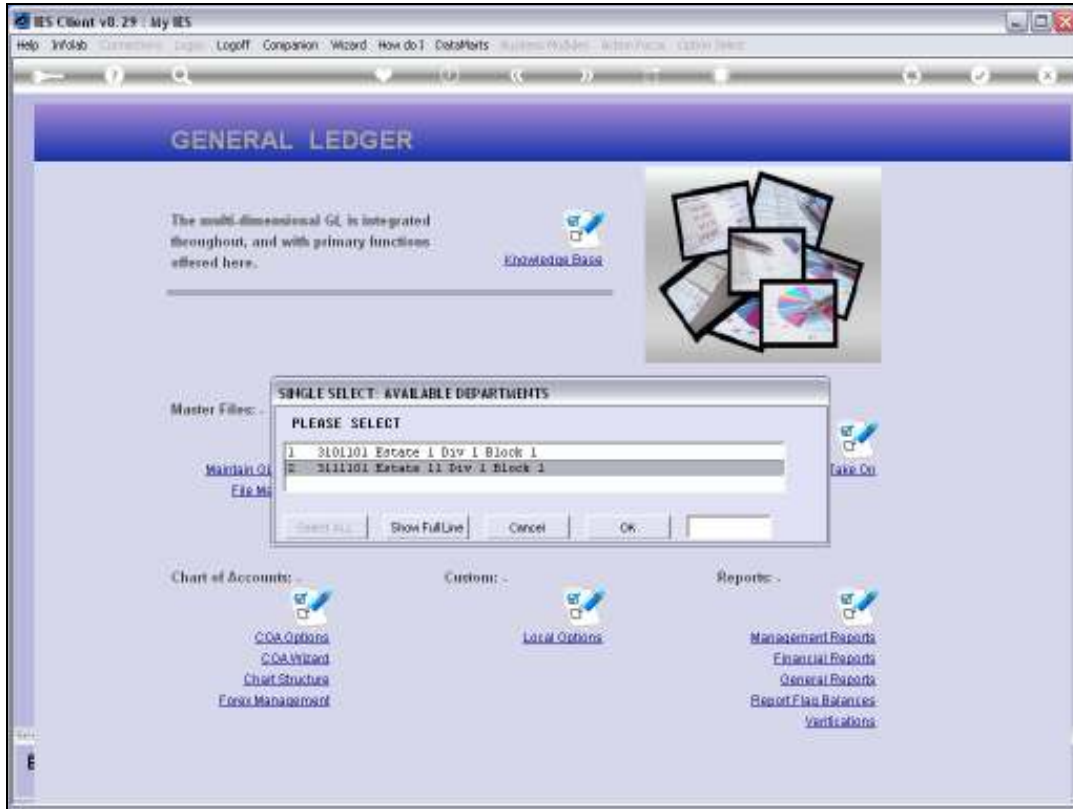
Slide 15  
Slide notes:



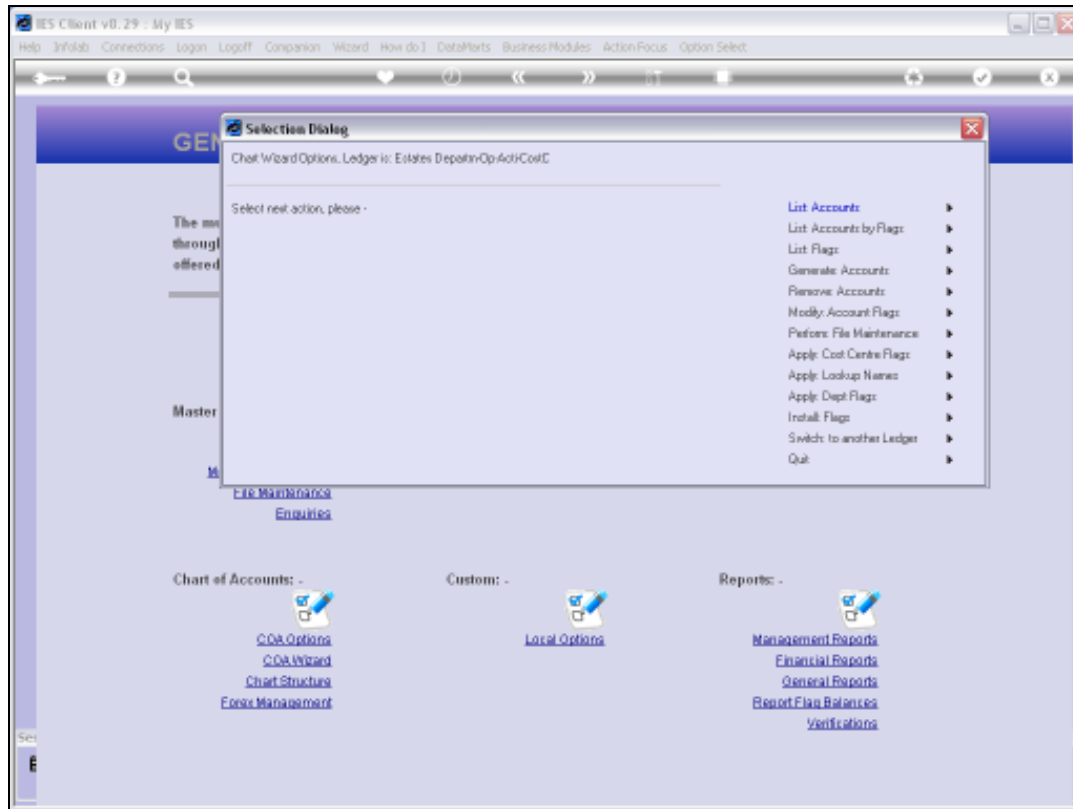
Slide 16

Slide notes: This is the 'to' Department.





Slide 17  
Slide notes:



## Slide 18

Slide notes: The moment we choose the 'to' Department, the new Accounts are created. Let's list the new Accounts in the 'to' Department, just to see.



Slide 19  
Slide notes:



Slide 20  
Slide notes:



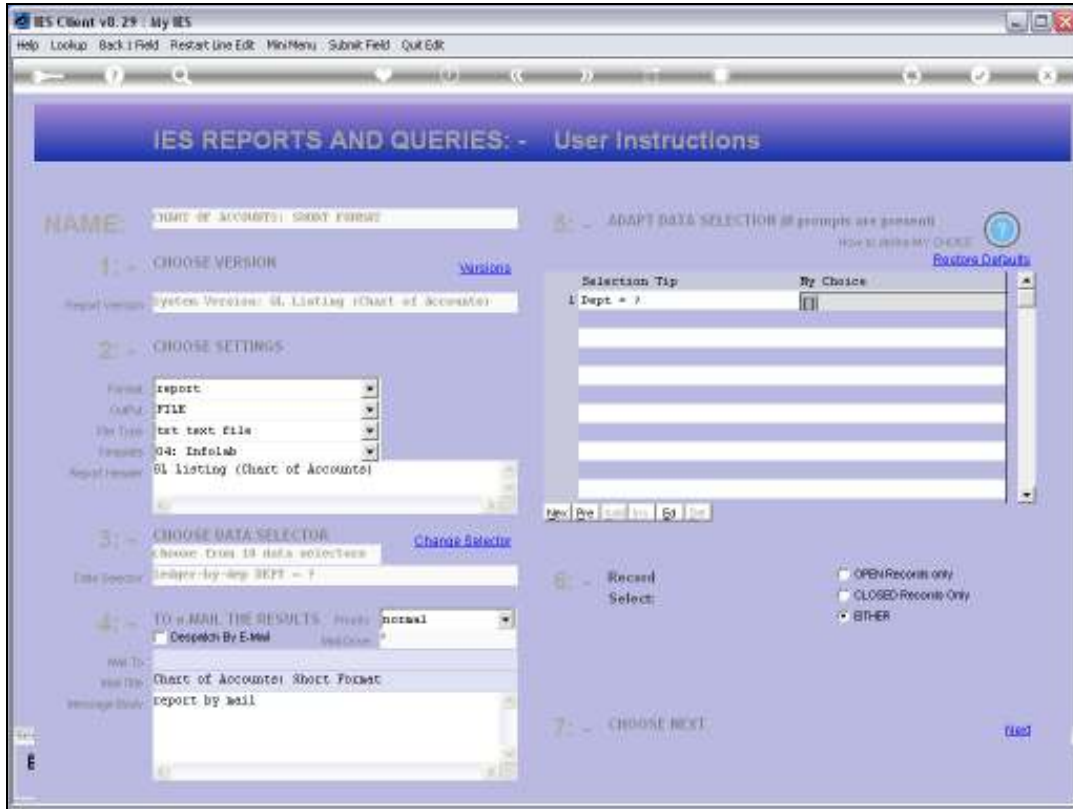
Slide 21  
Slide notes:



Slide 22  
Slide notes:



Slide 23  
Slide notes:

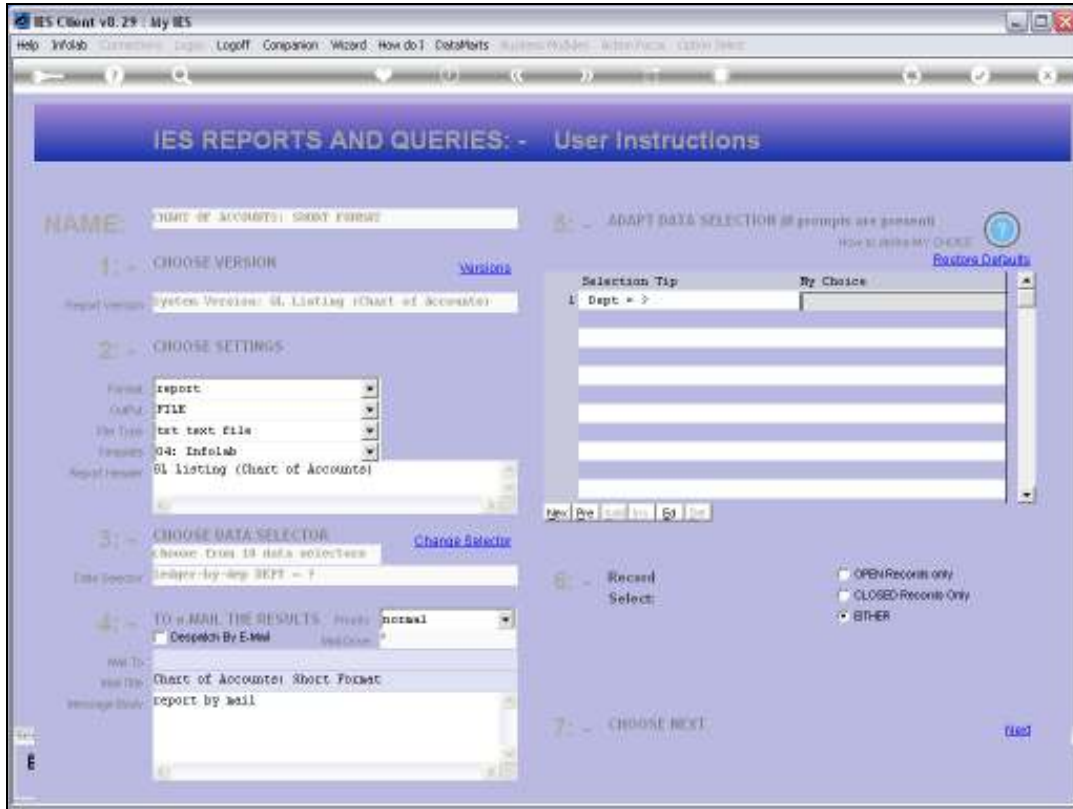


Slide 24  
Slide notes:

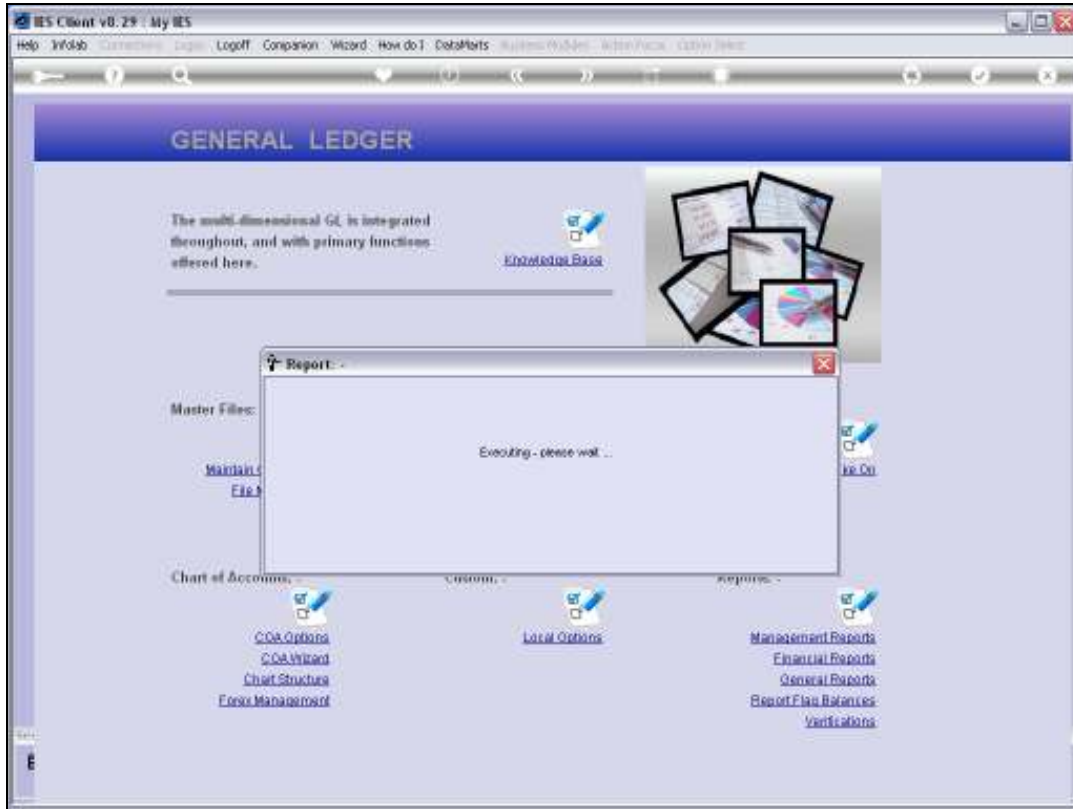




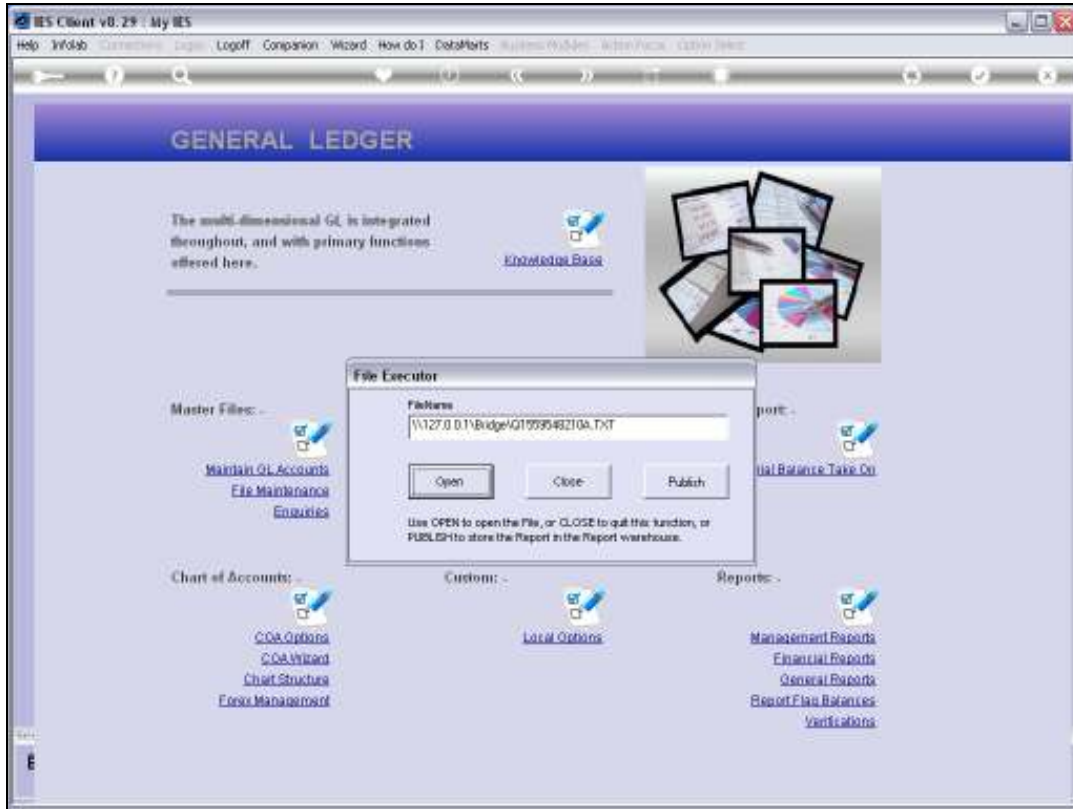
Slide 25  
Slide notes:



Slide 26  
Slide notes:



Slide 27  
Slide notes:



Slide 28  
Slide notes:

Q1559540210A.TXT - Notepad

File Edit Format View Help

locompary

12:22:20 11 SEP 2010 page 1

GL Listing (Chart of Accounts)

| Ledgercode.....      | Description.....              | Type.....   | D/C..... |
|----------------------|-------------------------------|-------------|----------|
| 211101-00-1004-10000 | ACCURED CHARGES               | Ledger Only | Open     |
| 211101-00-1004-10009 | ADMIN OVERTIME                | Ledger Only | Open     |
| 211101-00-1004-10010 | AGRIC EQUIP & IMPLEMENTS      | Ledger Only | Open     |
| 211101-00-1004-10012 | ALLOWANCES                    | Ledger Only | Open     |
| 211101-00-1004-10016 | ARTISAN OVERTIME              | Ledger Only | Open     |
| 211101-00-1004-10017 | ARTISAN WAGES                 | Ledger Only | Open     |
| 211101-00-1004-10018 | CANAL REPLACEMENT             | Ledger Only | Open     |
| 211101-00-1004-10019 | CANE CHAINS REP & REPLACE     | Ledger Only | Open     |
| 211101-00-1004-10024 | CANE EXPENSES                 | Ledger Only | Open     |
| 211101-00-1004-10028 | CLEANING MATERIAL             | Ledger Only | Open     |
| 211101-00-1004-10029 | COST OF SERVICES              | Ledger Only | Open     |
| 211101-00-1004-10109 | DAILY / HOURLY RATED BONDS    | Ledger Only | Open     |
| 211101-00-1004-10110 | DAILY HOURLY RATED WAGES      | Ledger Only | Open     |
| 211101-00-1004-10111 | DAILY/HOURLY RATED GRATS      | Ledger Only | Open     |
| 211101-00-1004-10112 | DAILY/HOURLY RATED O/TIME     | Ledger Only | Open     |
| 211101-00-1004-10129 | EDUCATION / ALLOWANCES        | Ledger Only | Open     |
| 211101-00-1004-10130 | ELECTRICITY INDUSTRIAL        | Ledger Only | Open     |
| 211101-00-1004-10132 | ENGINEERING CONSULTANTS       | Ledger Only | Open     |
| 211101-00-1004-10133 | EQUIPMENT(PURCHASES)          | Ledger Only | Open     |
| 211101-00-1004-10135 | FERTILIZING SCHEMS            | Ledger Only | Open     |
| 211101-00-1004-10136 | FERTILIZERS                   | Ledger Only | Open     |
| 211101-00-1004-10140 | FUEL                          | Ledger Only | Open     |
| 211101-00-1004-10141 | FUEL - BUNDLE RIGS            | Ledger Only | Open     |
| 211101-00-1004-10142 | FUEL - CRANES                 | Ledger Only | Open     |
| 211101-00-1004-10143 | FUEL - HAULERS                | Ledger Only | Open     |
| 211101-00-1004-10144 | FUEL - LOADERS                | Ledger Only | Open     |
| 211101-00-1004-10145 | FUEL OTHER                    | Ledger Only | Open     |
| 211101-00-1004-10146 | FUNGICIDES                    | Ledger Only | Open     |
| 211101-00-1004-10149 | GENERAL EXPENSES              | Ledger Only | Open     |
| 211101-00-1004-10151 | GRASSES FERTIF                | Ledger Only | Open     |
| 211101-00-1004-10152 | GYPSUM / NITRO SPREADING      | Ledger Only | Open     |
| 211101-00-1004-10154 | HARVESTERS                    | Ledger Only | Open     |
| 211101-00-1004-10157 | HEALTH & SAFETY               | Ledger Only | Open     |
| 211101-00-1004-10159 | HEAVY DISCING                 | Ledger Only | Open     |
| 211101-00-1004-10159 | HERBICIDES                    | Ledger Only | Open     |
| 211101-00-1004-10160 | HYGIENE & WELFARE             | Ledger Only | Open     |
| 211101-00-1004-10161 | INCENTIVES                    | Ledger Only | Open     |
| 211101-00-1004-10162 | INCOME ALLOWANCES & SUBSIDIES | Ledger Only | Open     |
| 211101-00-1004-10162 | INSECTICIDES                  | Ledger Only | Open     |
| 211101-00-1004-10169 | IRRIGATION MAINTENANCE        | Ledger Only | Open     |
| 211101-00-1004-10170 | IRRIGATION WORKS              | Ledger Only | Open     |
| 211101-00-1004-10176 | LAND LEVEL TRACTOR            | Ledger Only | Open     |
| 211101-00-1004-10180 | LIGHT DISCING                 | Ledger Only | Open     |

Slide 29

Slide notes: And here we have all the new Accounts.

Q1559540210A.TXT - Notepad

File Edit Format View Help

company

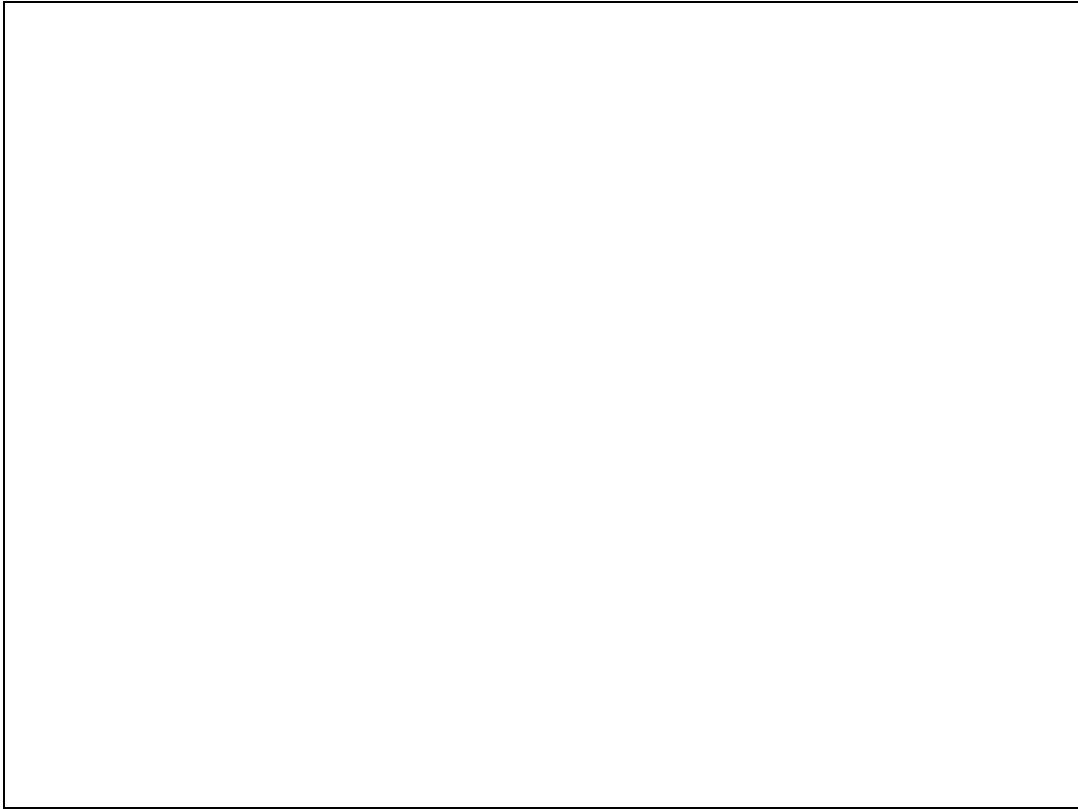
12:22:20 11 SEP 2010 page 1

GL Listing (Chart of Accounts)

| Ledgercode.....      | Description.....              | Type.....   | D/C..... |
|----------------------|-------------------------------|-------------|----------|
| 211101-00-1004-10000 | ACCURED CHARGES               | Ledger Only | Open     |
| 211101-00-1004-10009 | ADMIN OVERTIME                | Ledger Only | Open     |
| 211101-00-1004-10010 | AGRIC EQUIP & IMPRMENTS       | Ledger Only | Open     |
| 211101-00-1004-10012 | ALLOWANCES                    | Ledger Only | Open     |
| 211101-00-1004-10016 | ARTISAN OVERTIME              | Ledger Only | Open     |
| 211101-00-1004-10017 | ARTISAN WAGES                 | Ledger Only | Open     |
| 211101-00-1004-10018 | CANAL REPLACEMENT             | Ledger Only | Open     |
| 211101-00-1004-10019 | CANE CHAINS REP & REPLACE     | Ledger Only | Open     |
| 211101-00-1004-10024 | CANE EXPENSE                  | Ledger Only | Open     |
| 211101-00-1004-10028 | CLEANING MATERIAL             | Ledger Only | Open     |
| 211101-00-1004-10029 | COST OF SERVICES              | Ledger Only | Open     |
| 211101-00-1004-10109 | DAILY / HOURLY RATED BONDS    | Ledger Only | Open     |
| 211101-00-1004-10110 | DAILY HOURLY RATED WAGES      | Ledger Only | Open     |
| 211101-00-1004-10111 | DAILY/HOURLY RATED GRATS      | Ledger Only | Open     |
| 211101-00-1004-10112 | DAILY/HOURLY RATED O/TIME     | Ledger Only | Open     |
| 211101-00-1004-10129 | EDUCATION / ALLOWANCES        | Ledger Only | Open     |
| 211101-00-1004-10130 | ELECTRICITY INDUSTRIAL        | Ledger Only | Open     |
| 211101-00-1004-10132 | ENGINEERING CONSULTANTS       | Ledger Only | Open     |
| 211101-00-1004-10133 | EQUIPMENT(PURCHASES)          | Ledger Only | Open     |
| 211101-00-1004-10135 | FERTILIZING SCHEMS            | Ledger Only | Open     |
| 211101-00-1004-10136 | FERTILIZERS                   | Ledger Only | Open     |
| 211101-00-1004-10140 | FUEL                          | Ledger Only | Open     |
| 211101-00-1004-10141 | FUEL - BUNDLE RIGS            | Ledger Only | Open     |
| 211101-00-1004-10142 | FUEL - CRANES                 | Ledger Only | Open     |
| 211101-00-1004-10143 | FUEL - HAULERS                | Ledger Only | Open     |
| 211101-00-1004-10144 | FUEL - LOADERS                | Ledger Only | Open     |
| 211101-00-1004-10145 | FUEL OTHER                    | Ledger Only | Open     |
| 211101-00-1004-10146 | FUNGICIDES                    | Ledger Only | Open     |
| 211101-00-1004-10149 | GENERAL EXPENSES              | Ledger Only | Open     |
| 211101-00-1004-10151 | GRASSES FERTIF                | Ledger Only | Open     |
| 211101-00-1004-10152 | GYPSUM / NITRO SPREADING      | Ledger Only | Open     |
| 211101-00-1004-10154 | HARVESTERS                    | Ledger Only | Open     |
| 211101-00-1004-10157 | HEALTH & SAFETY               | Ledger Only | Open     |
| 211101-00-1004-10159 | HEAVY DISCING                 | Ledger Only | Open     |
| 211101-00-1004-10159 | HERBICIDES                    | Ledger Only | Open     |
| 211101-00-1004-10160 | HYGIENE & WELFARE             | Ledger Only | Open     |
| 211101-00-1004-10161 | INCENTIVES                    | Ledger Only | Open     |
| 211101-00-1004-10162 | INCOME ALLOWANCES & SUBSIDIES | Ledger Only | Open     |
| 211101-00-1004-10162 | INSECTICIDES                  | Ledger Only | Open     |
| 211101-00-1004-10169 | IRRIGATION MAINTENANCE        | Ledger Only | Open     |
| 211101-00-1004-10170 | IRRIGATION WORKS              | Ledger Only | Open     |
| 211101-00-1004-10176 | LAND LEVEL TRACTOR            | Ledger Only | Open     |
| 211101-00-1004-10180 | LIGHT DISCING                 | Ledger Only | Open     |

Slide 30

Slide notes:



Slide 31

Slide notes:

Q1559540210A.TXT - Notepad

File Edit Format View Help

GL Listing (Chart of Accounts)

| Ledgercode.....      | Description.....            | Type.....   | D/C..... |
|----------------------|-----------------------------|-------------|----------|
| 211101-00-1004-10228 | RADIO EQUIPMENT             | Ledger Only | Open     |
| 211101-00-1004-10230 | RATIONS                     | Ledger Only | Open     |
| 211101-00-1004-10237 | RIPPING                     | Ledger Only | Open     |
| 211101-00-1004-10238 | ROAD CONSTRUCTION           | Ledger Only | Open     |
| 211101-00-1004-10239 | ROADS                       | Ledger Only | Open     |
| 211101-00-1004-10240 | SAL/WAGES ADVANCES          | Ledger Only | Open     |
| 211101-00-1004-10241 | SALARIED STAFF GRATUITIES   | Ledger Only | Open     |
| 211101-00-1004-10242 | SALARIED STAFF OVERTIME     | Ledger Only | Open     |
| 211101-00-1004-10246 | SERVICE CONTRACTS           | Ledger Only | Open     |
| 211101-00-1004-10247 | SEVERANCE PAY INCREASE      | Ledger Only | Open     |
| 211101-00-1004-10249 | SPORT                       | Ledger Only | Open     |
| 211101-00-1004-10250 | STAFF BONUSSES              | Ledger Only | Open     |
| 211101-00-1004-10252 | STAFF SALARIES & ALLOWANCES | Ledger Only | Open     |
| 211101-00-1004-10254 | STAFF SALARIES - TRAINEES   | Ledger Only | Open     |
| 211101-00-1004-10255 | STATIONERY                  | Ledger Only | Open     |
| 211101-00-1004-10262 | SUBSCRIPTIONS               | Ledger Only | Open     |
| 211101-00-1004-10264 | SUMMIT EQUIPMENT            | Ledger Only | Open     |
| 211101-00-1004-10271 | SURFACE DRAINAGE GRADER     | Ledger Only | Open     |
| 211101-00-1004-10272 | SURVY EQUIPMENT             | Ledger Only | Open     |
| 211101-00-1004-10276 | TECHNICAL SERVICES          | Ledger Only | Open     |
| 211101-00-1004-10279 | TELEPHONE                   | Ledger Only | Open     |
| 211101-00-1004-10281 | TOILET PAPER                | Ledger Only | Open     |
| 211101-00-1004-10282 | TOWNSHIP SERVICES           | Ledger Only | Open     |
| 211101-00-1004-10282 | TRACTOR CHARGES IN          | Ledger Only | Open     |
| 211101-00-1004-10284 | TRACTORS & GRADERS          | Ledger Only | Open     |

82 record(s) listed

Slide 32

Slide notes: