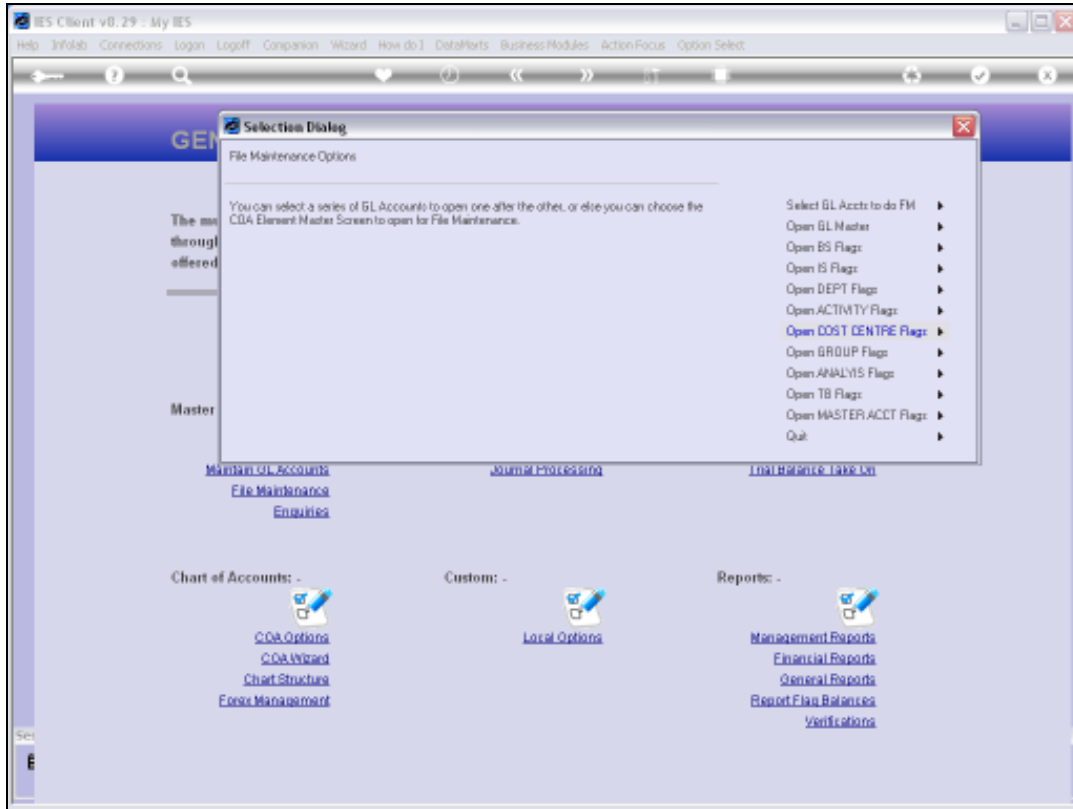


Slide 1

Slide notes: Among the File Maintenance options offered from the Chart wizard, we have direct entry to Ledger File Maintenance.



Slide 2
Slide notes:

Account Key [Open New Account](#)

Ledger Account [Acct Detail](#)

Description

Managed Currency: LOCAL

Current Month	0.00
Balance YTD	0.00

Physical Resource

Phys Current	0.00
Phys YTD	0.00

HPI Type

HPI Current	0.00
HPI YTD	0.00

Transaction Status: Open

Account Type:

Inc/Exp or BalSheet: Not Indicated

Last Used By:

Last Used:

[Data Drive Movement](#)

[Day Audit Trail](#)

[History](#)

[Delete This Acct](#)

[Change Currency](#)

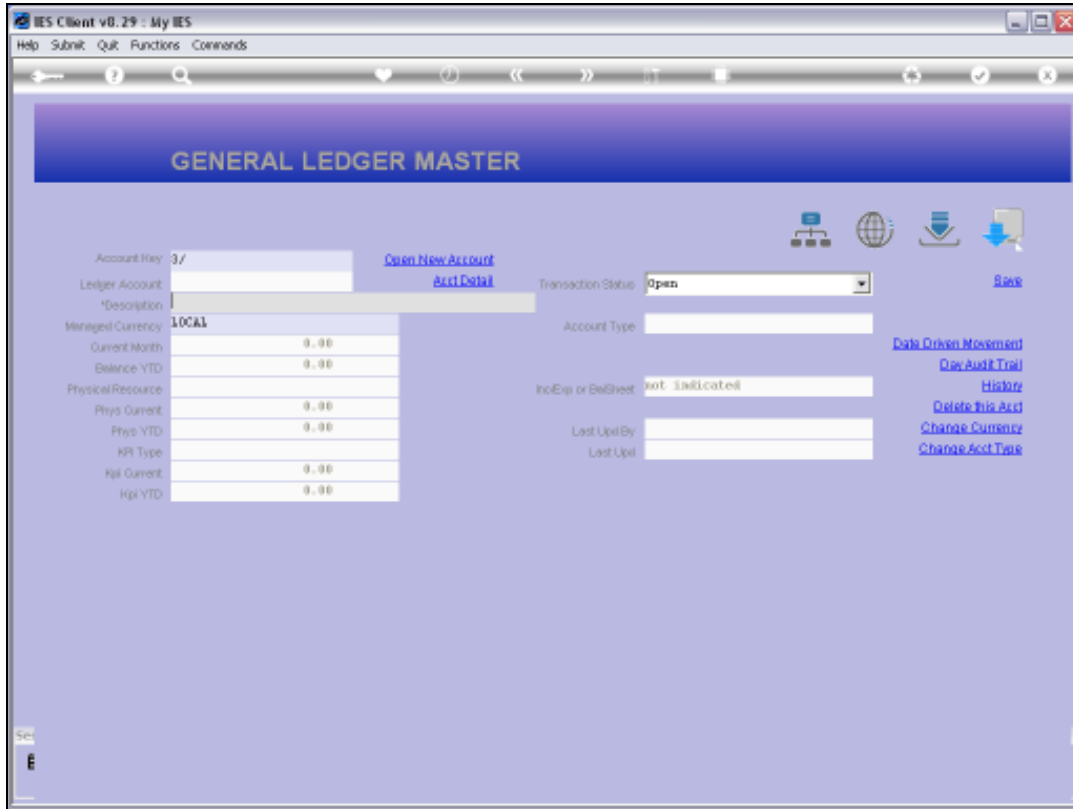
[Change Acct Type](#)

Slide 3

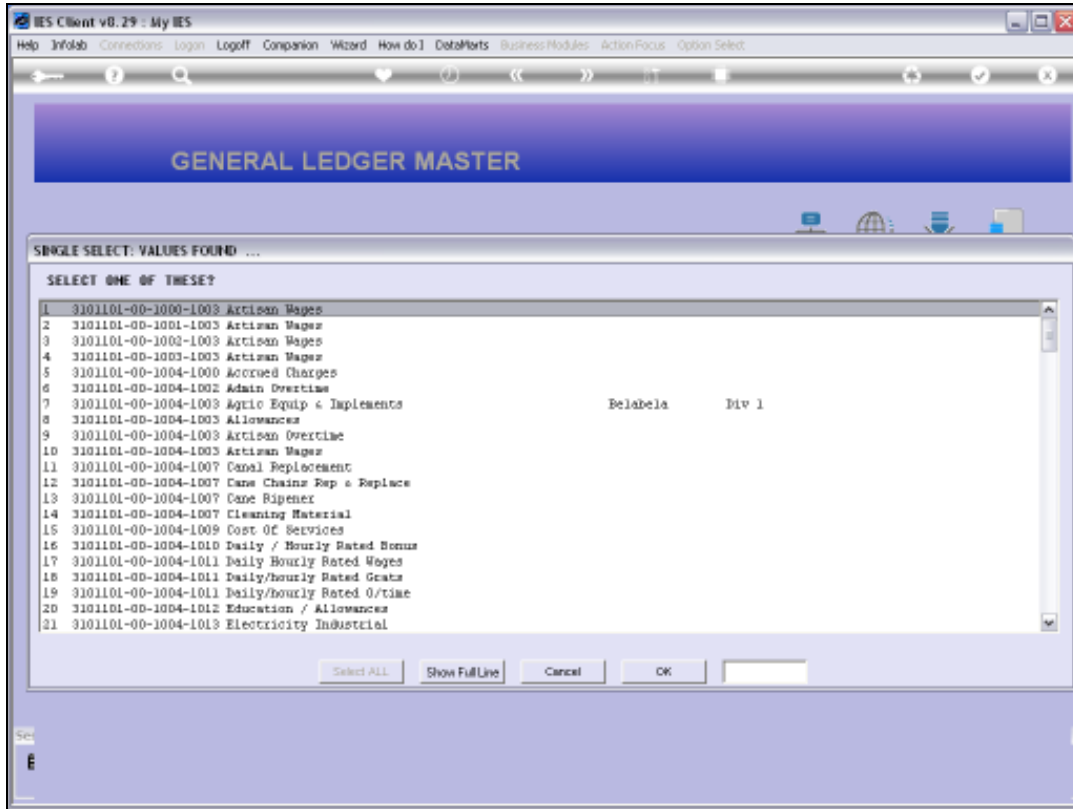
Slide notes: Here, we can select any Account in the system, not only in the current Ledger, but in fact any Account in any Ledger in this multi Ledger.



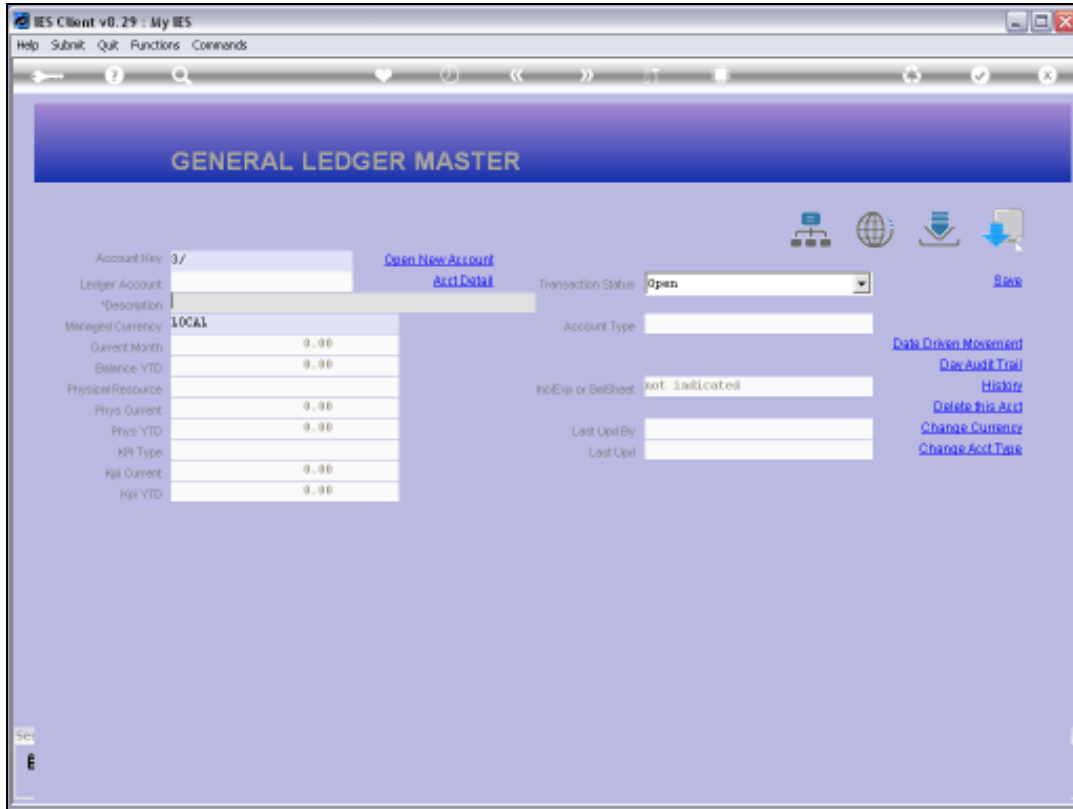
Slide 4
Slide notes:



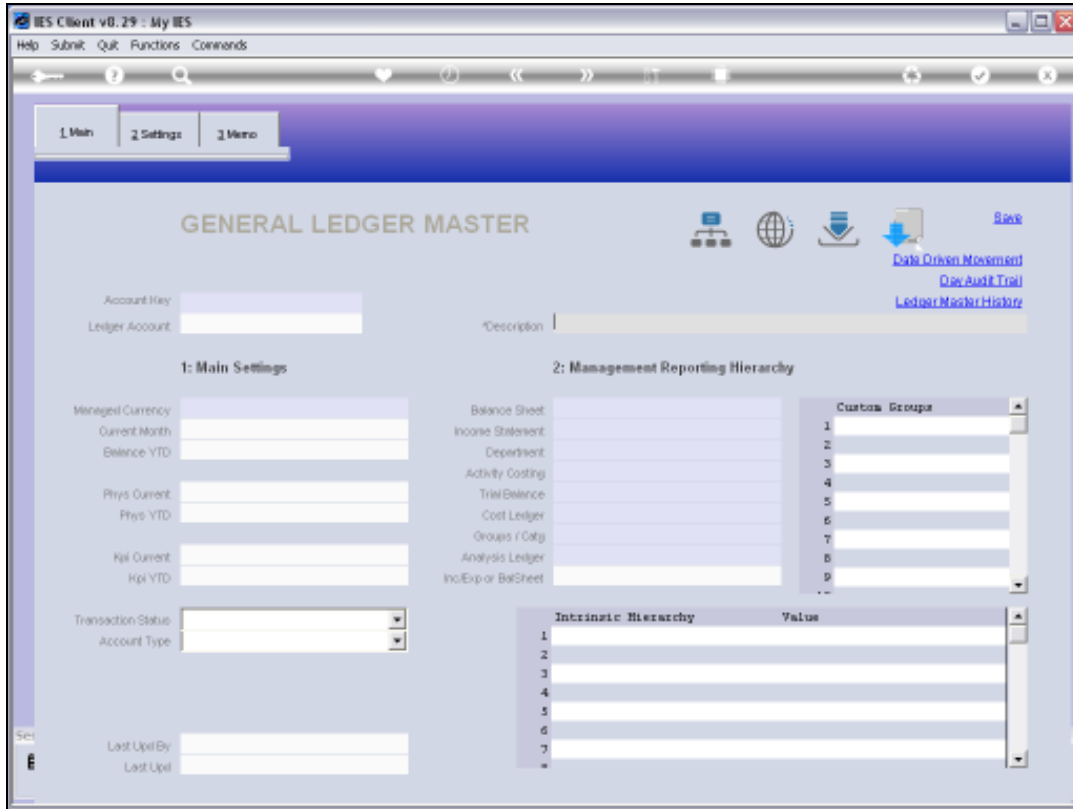
Slide 5
Slide notes:



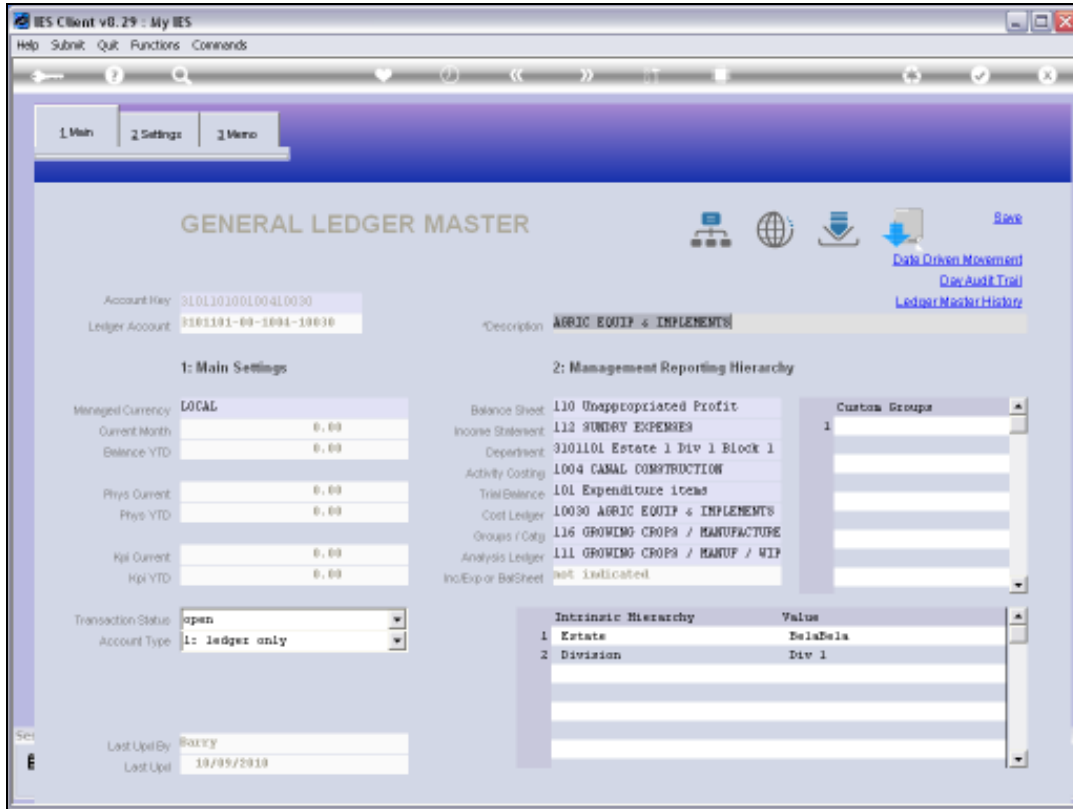
Slide 6
Slide notes:



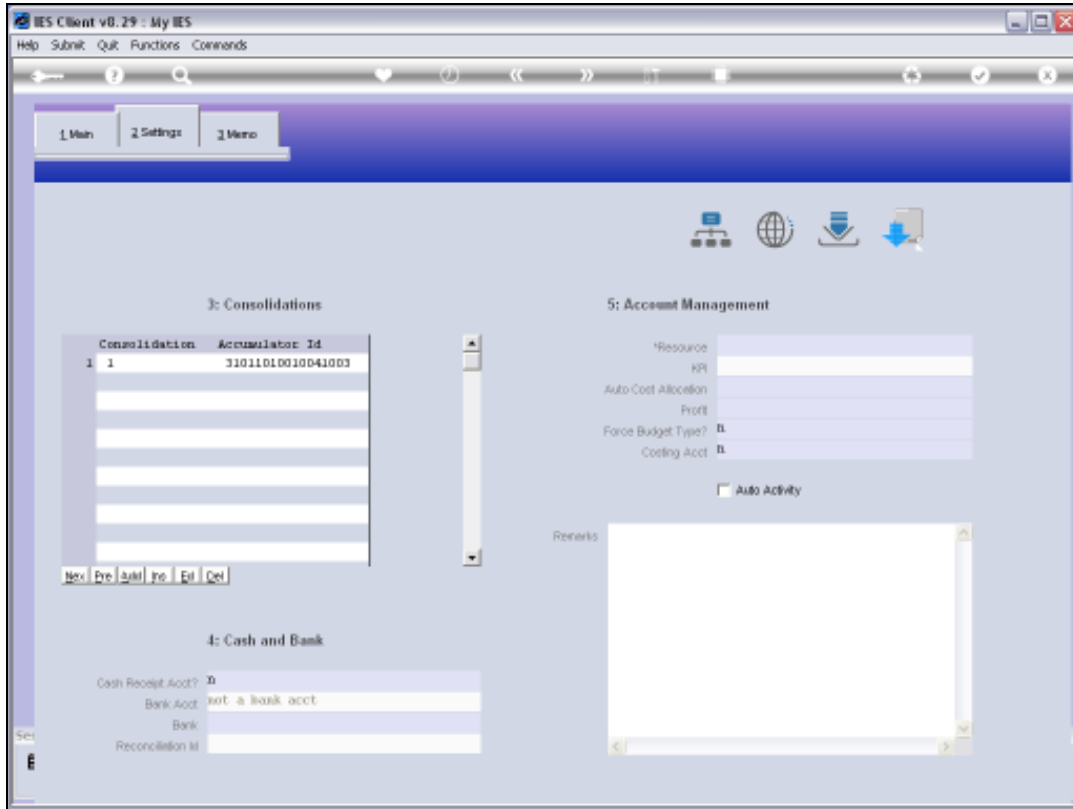
Slide 7
Slide notes:



Slide 8
Slide notes:

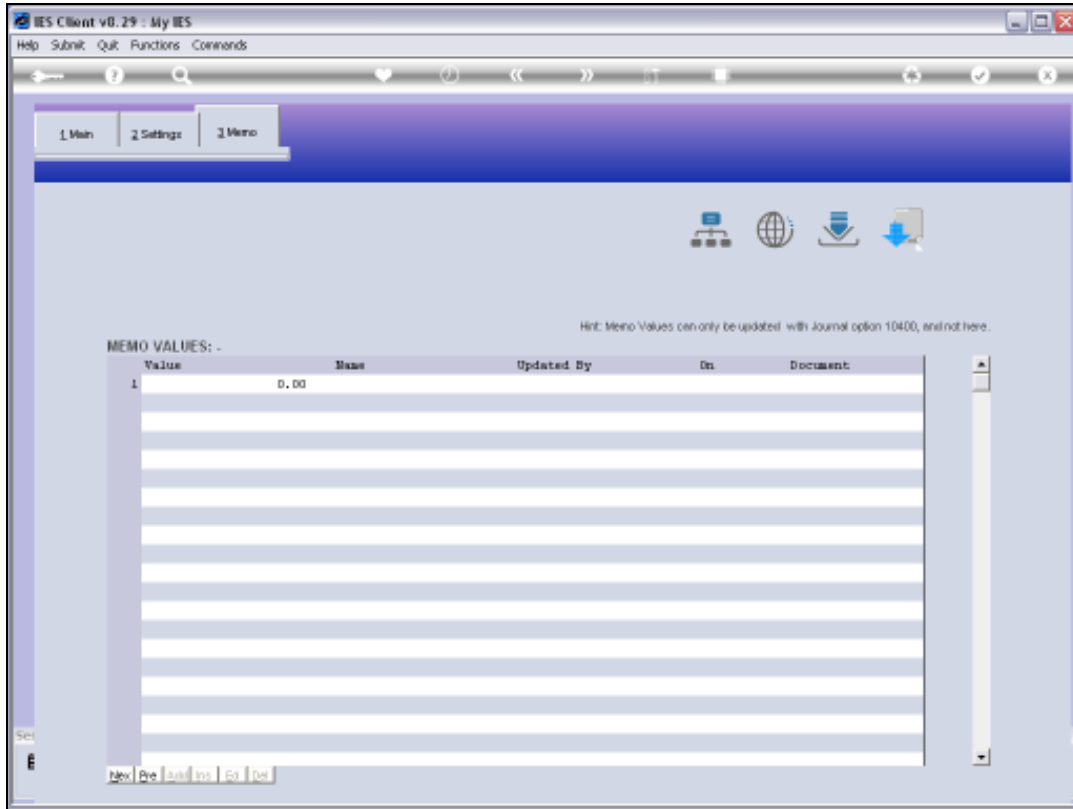


Slide 9
Slide notes:



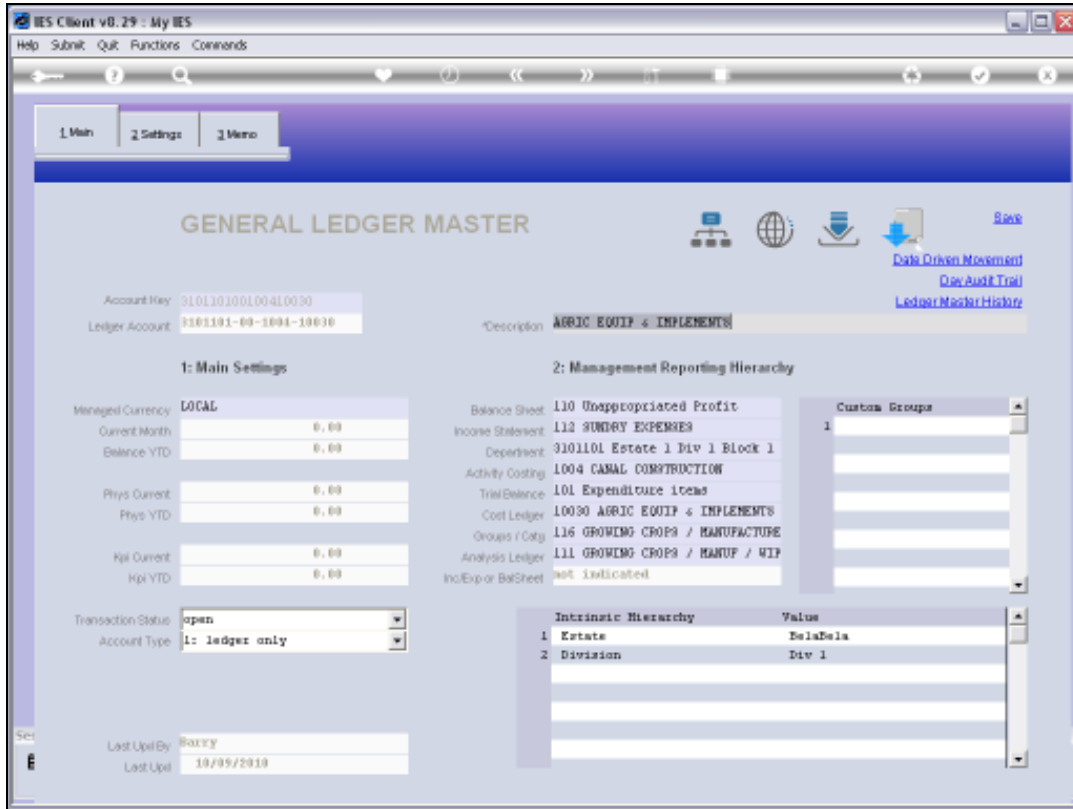
Slide 10

Slide notes:



Slide 11

Slide notes:



Slide 12
Slide notes:

GENERAL LEDGER MASTER

Account Key: 310110100100410090 [Open New Account](#)
Ledger Account: 1191101-90-1000-10000 [Acct Detail](#) Transaction Status: open [Save](#)
Description: **AGRIC EQUIP & IMPLEMENTS**
Managed Currency: LOCAL Account Type: 31 ledger only [Data Origin Movement](#)
Current Month: 0.00 [Doc Audit Trail](#)
Balance YTD: 0.00 [History](#)
Physical Resource: Inc/Exp or BalSheet: not indicated [Delete This Acct](#)
Phys Current: 0.00 [Change Currency](#)
Phys YTD: 0.00 [Change Acct Type](#)
PR Type: Last Upd By: Barry
Hpl Current: 0.00 Last Upd: 12/09/2010
Hpl YTD: 0.00

income / expense vs budget

Month	1.0	0.8	0.6	0.4	0.2	0.0
Jan 2010						
Feb 2010						
Mar 2010						
Apr 2010						
May 2010						
Jun 2010						
Jul 2010						
Aug 2010						
Sep 2010						
Oct 2010						
Nov 2010						
Dec 2010						

Slide 13
Slide notes:

GENERAL LEDGER MASTER

Account Key: 310110100100410090 [Open New Account](#)
Ledger Account: 1191101-90-1000-10000 [Acct Detail](#) Transaction Status: open [Save](#)
Description: **AGRIC EQUIP & IMPLEMENTS**
Managed Currency: LOCAL Account Type: 31 ledger only [Data Drive Movement](#)
Current Month: 0.00 [Doc Audit Trail](#)
Balance YTD: 0.00 [History](#)
Physical Resource: Inc/Exp or BalSheet: not indicated [Delete This Acct](#)
Phys Current: 0.00 [Change Currency](#)
Phys YTD: 0.00 [Change Acct Type](#)
PR Type: Last Upd By: Barry
Hpl Current: 0.00 Last Upd: 12/09/2010
Hpl YTD: 0.00

income / expense vs budget

Month	1.0	0.8	0.6	0.4	0.2	0.0
Jan 2010						
Feb 2010						
Mar 2010						
Apr 2010						
May 2010						
Jun 2010						
Jul 2010						
Aug 2010						
Sep 2010						
Oct 2010						
Nov 2010						
Dec 2010						

Slide 14
Slide notes:

Slide 15
Slide notes:

Account Key: 311/ [Open New Account](#)

Ledger Account: [Acct Detail](#) Transaction Status: Open [Save](#)

Managed Currency: LOCAL

Physical Resource	Current Month	Balance YTD	Phys Current	Phys YTD	Hpl Current	Hpl YTD
	0.00	0.00	0.00	0.00	0.00	0.00

Inc/Exp or BalSheet: not indicated

Last Upd By: Last Upd:

[Data Origin Movement](#)
[Doc Audit Trail](#)
[History](#)
[Delete This Acct](#)
[Change Currency](#)
[Change Acct Type](#)

income / expense vs budget

	Jan 2010	Feb 2010	Mar 2010	Apr 2010	May 2010	Jun 2010	Jul 2010	Aug 2010	Sep 2010	Oct 2010	Nov 2010	Dec 2010
inc												
buc												

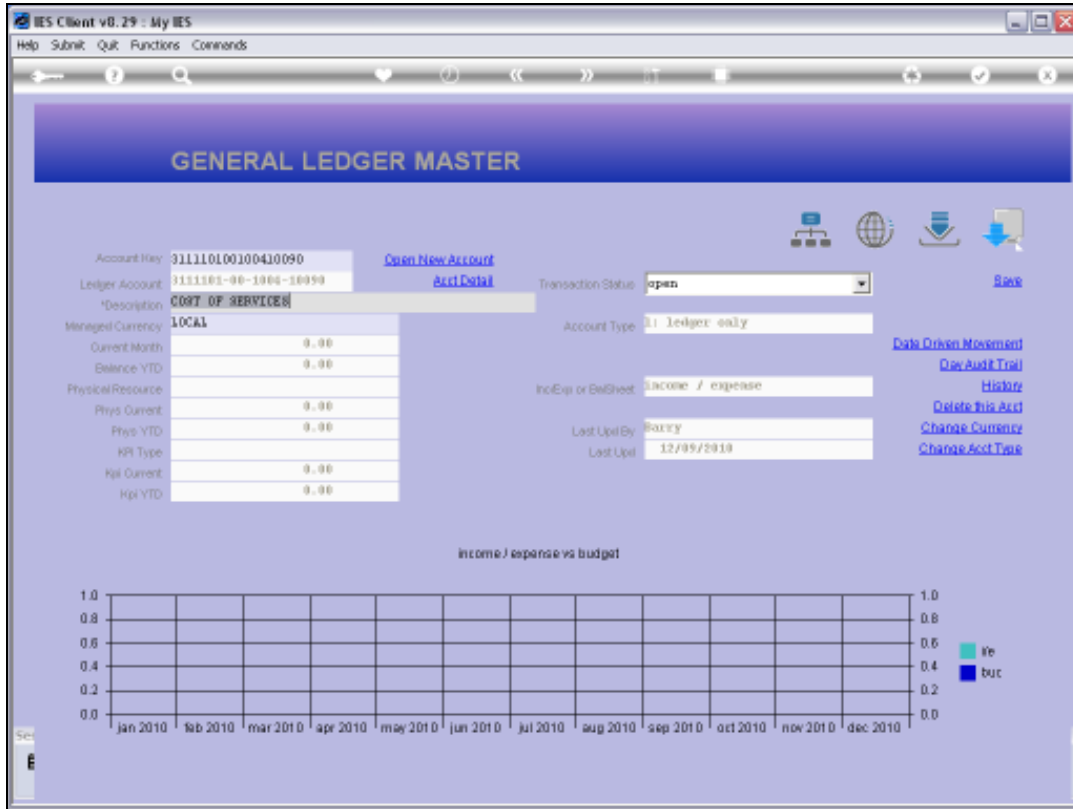
Slide 16
Slide notes:



Slide 17

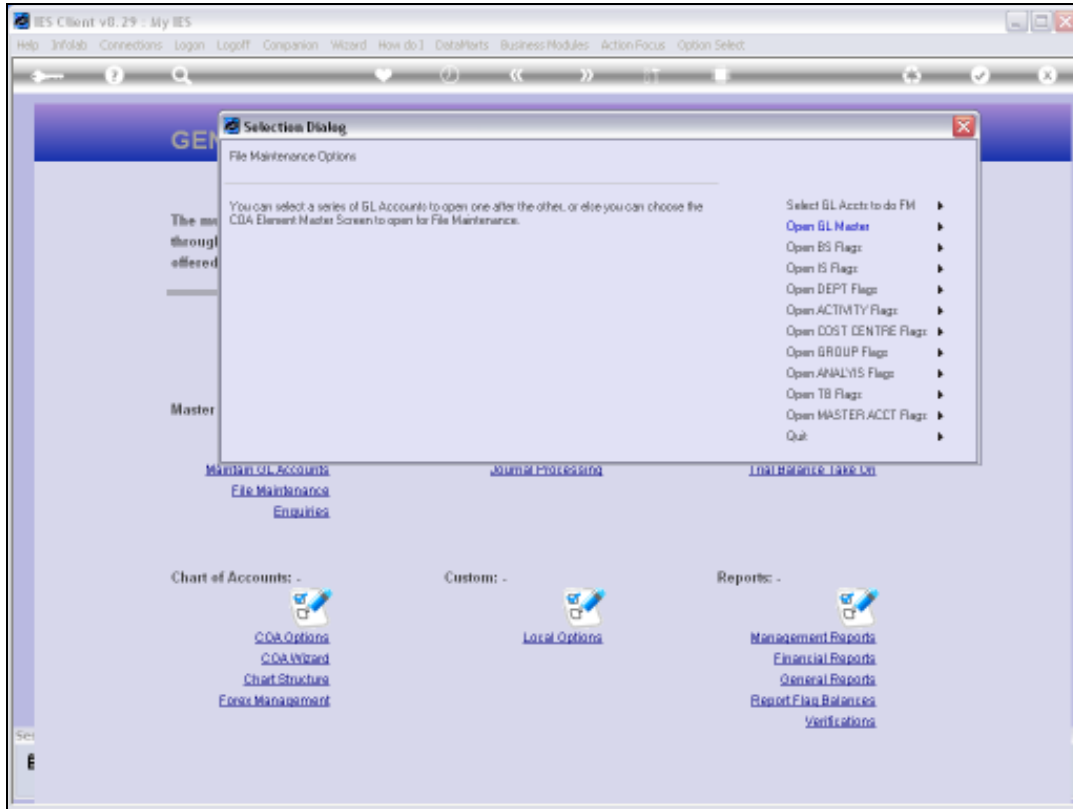
Slide notes:

Slide 18
Slide notes:

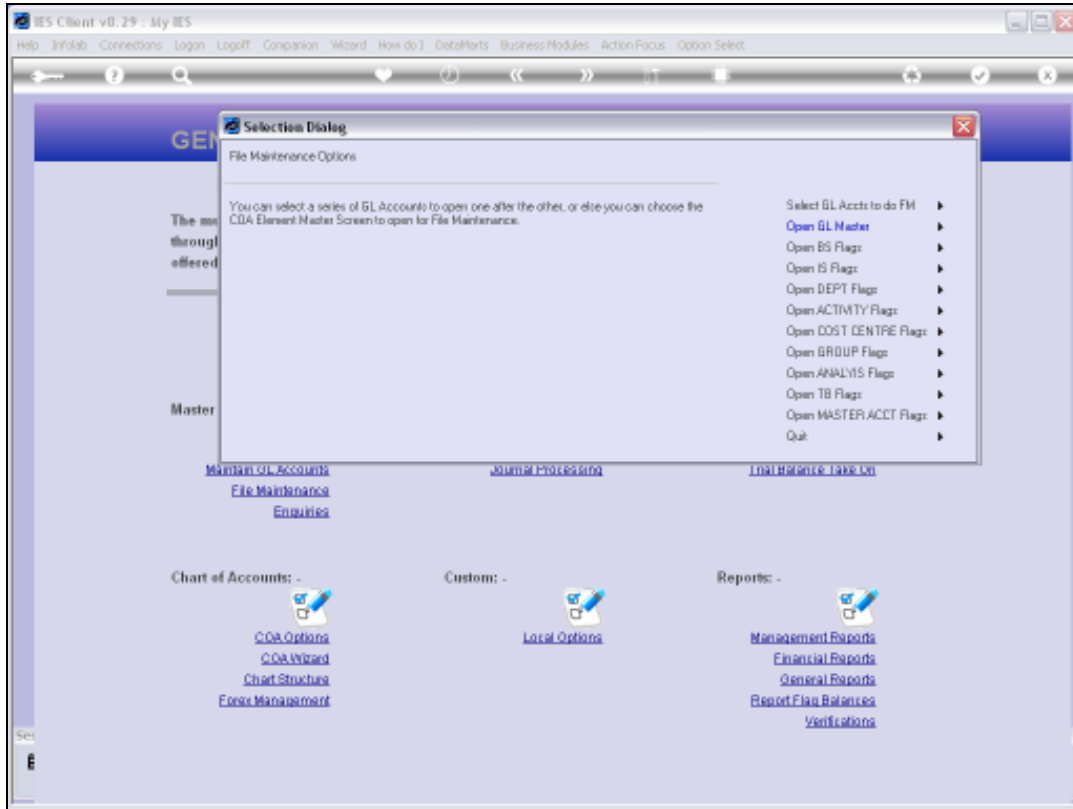


Slide 19

Slide notes: We can access any number of Accounts. When we wish to return to the Chart wizard, we just quit the Ledger File Maintenance screen.



Slide 20
Slide notes:



Slide 21
Slide notes: