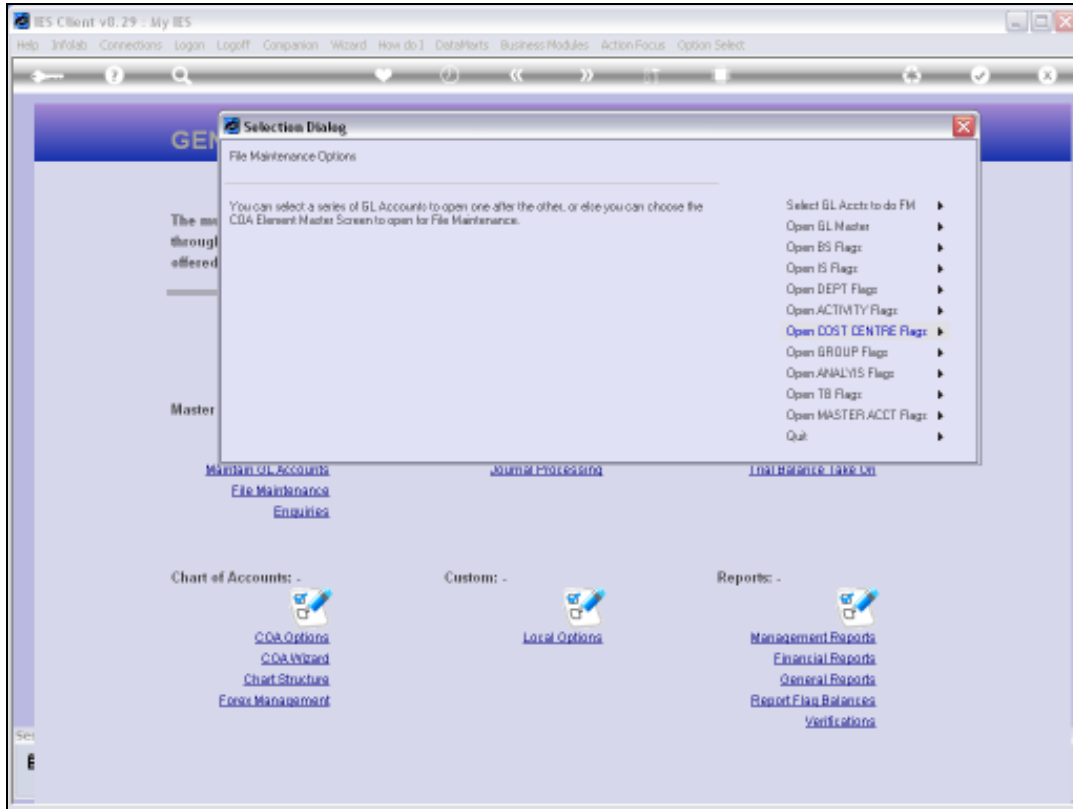


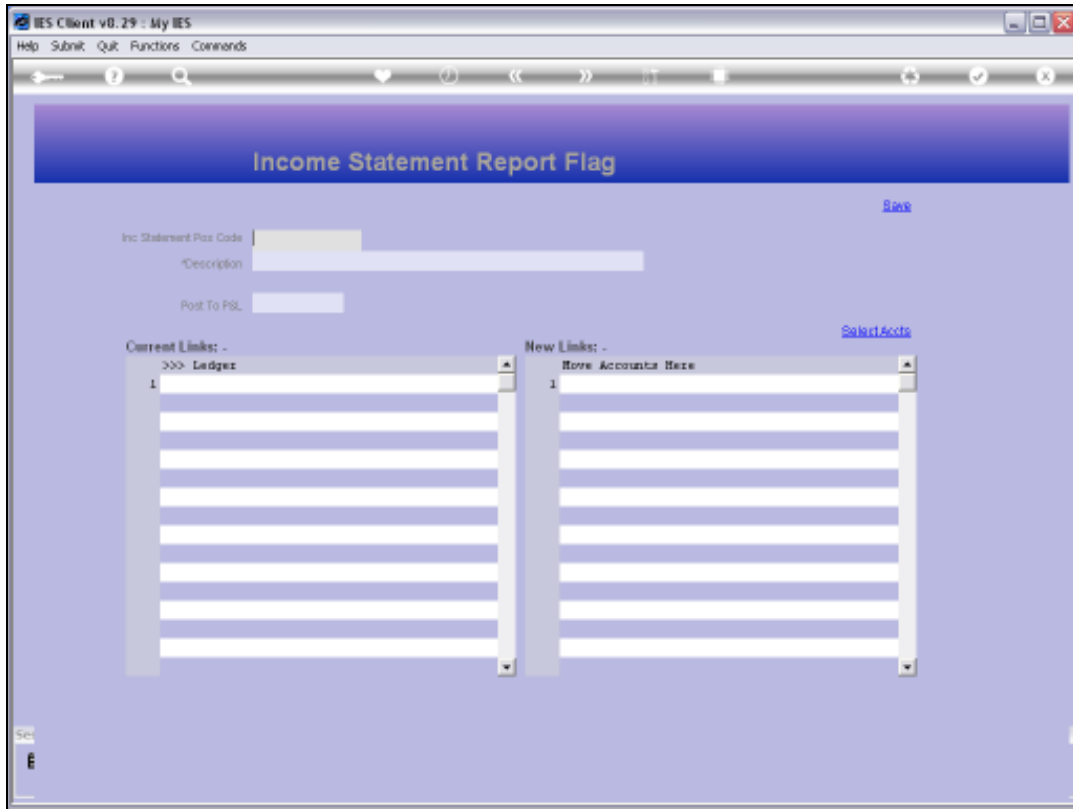
Slide 1

Slide notes: From the Chart wizard, we have direct entry to File Maintenance options on the Ledger and also the Report Flag masters.

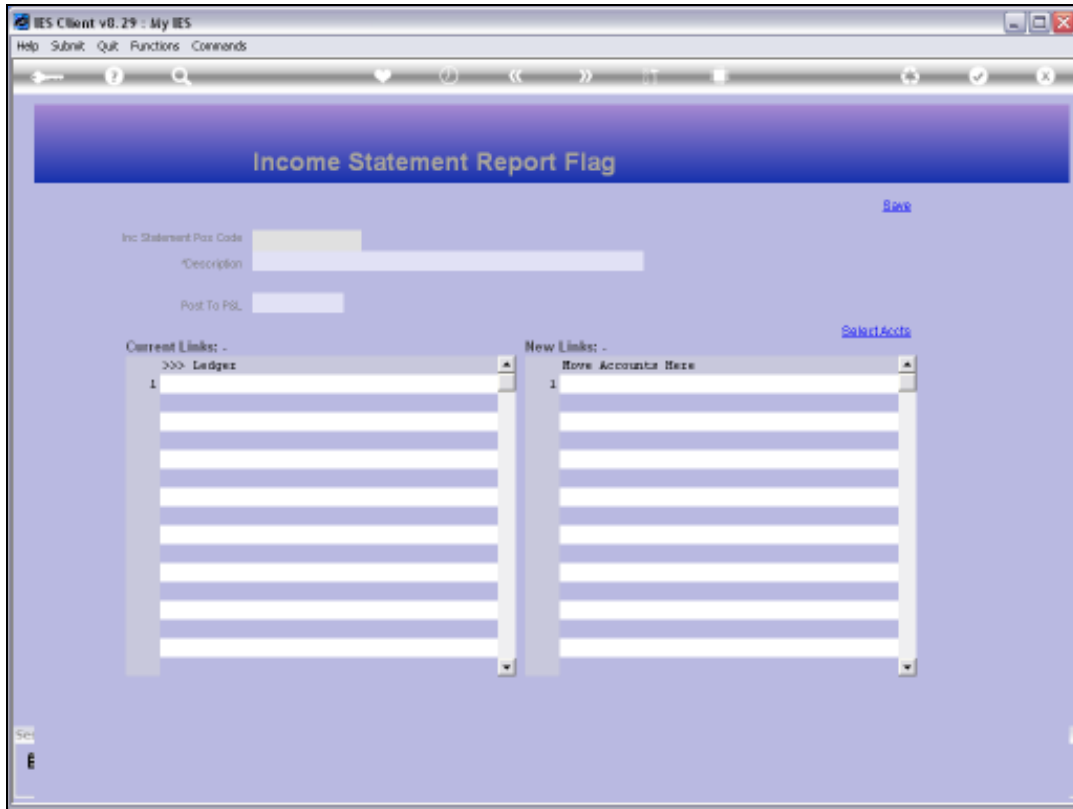


Slide 2

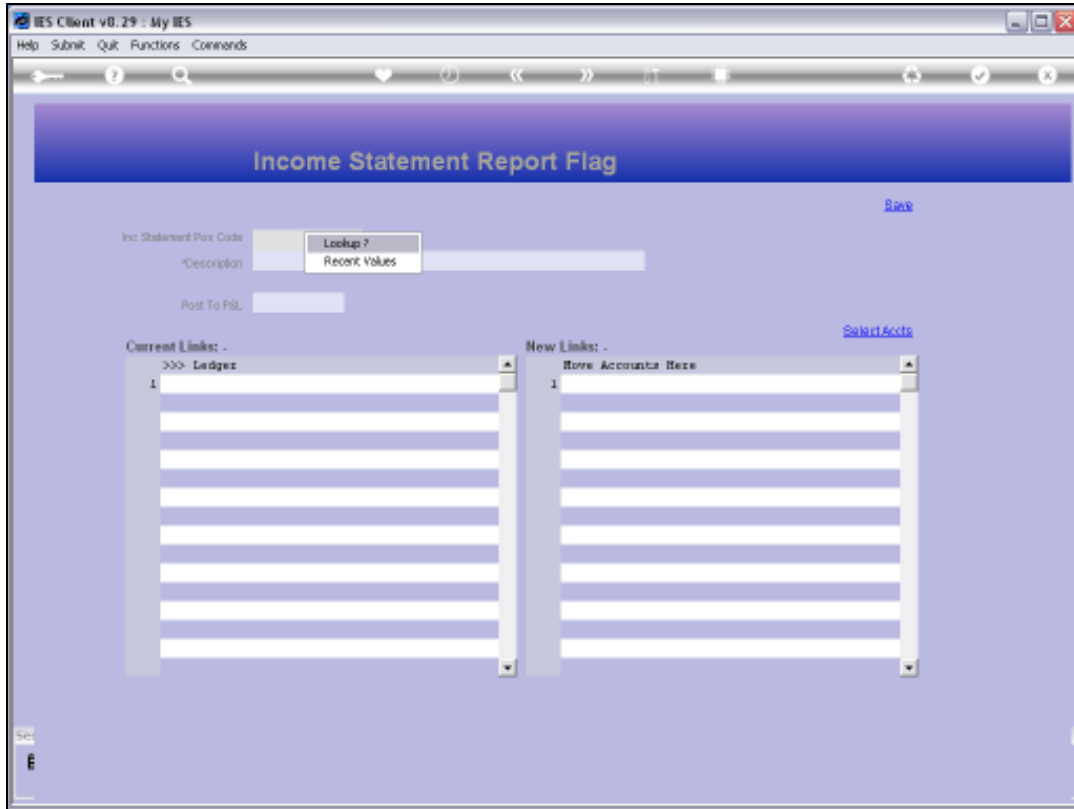
Slide notes: We can update any of the Report Flag Masters, and we will now do an example on the ISPOS Flag Master.



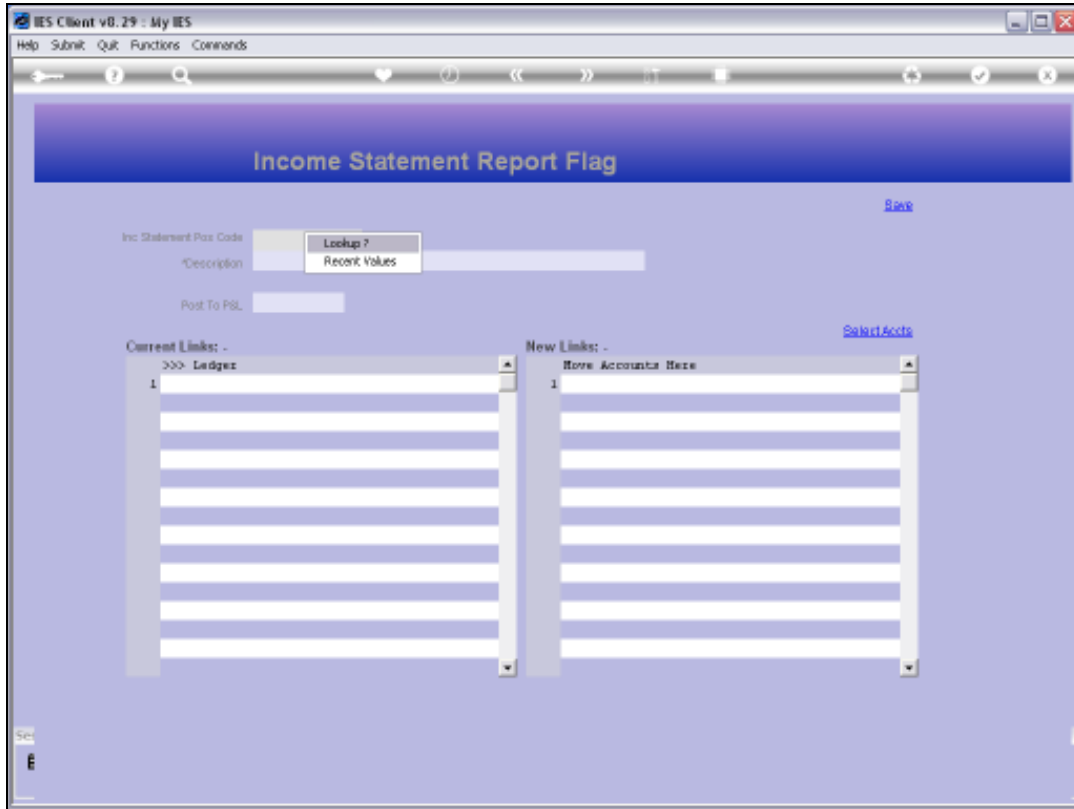
Slide 3
Slide notes:



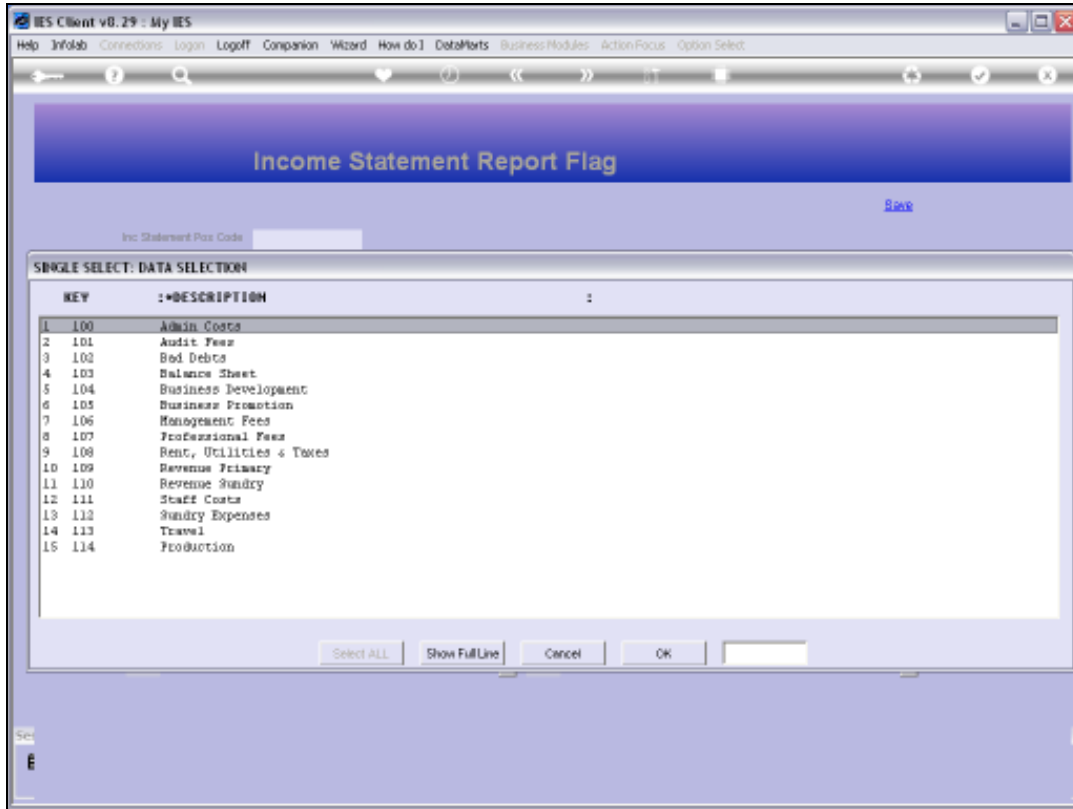
Slide 4
Slide notes:



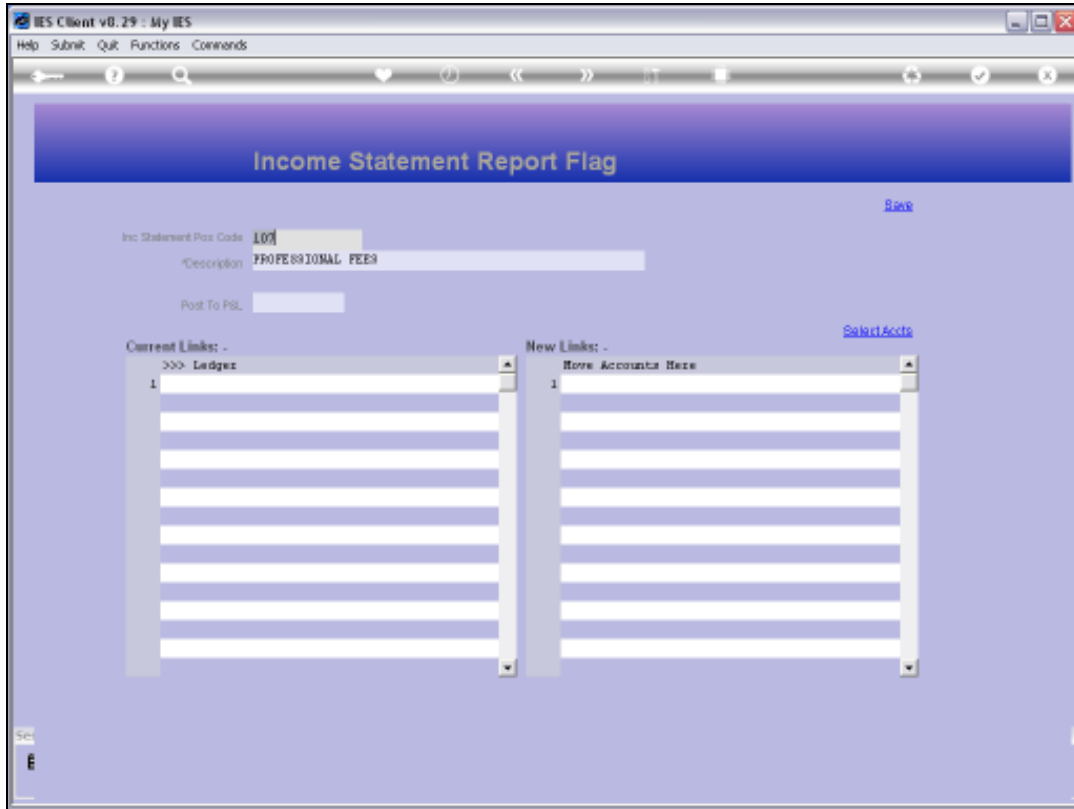
Slide 5
Slide notes:



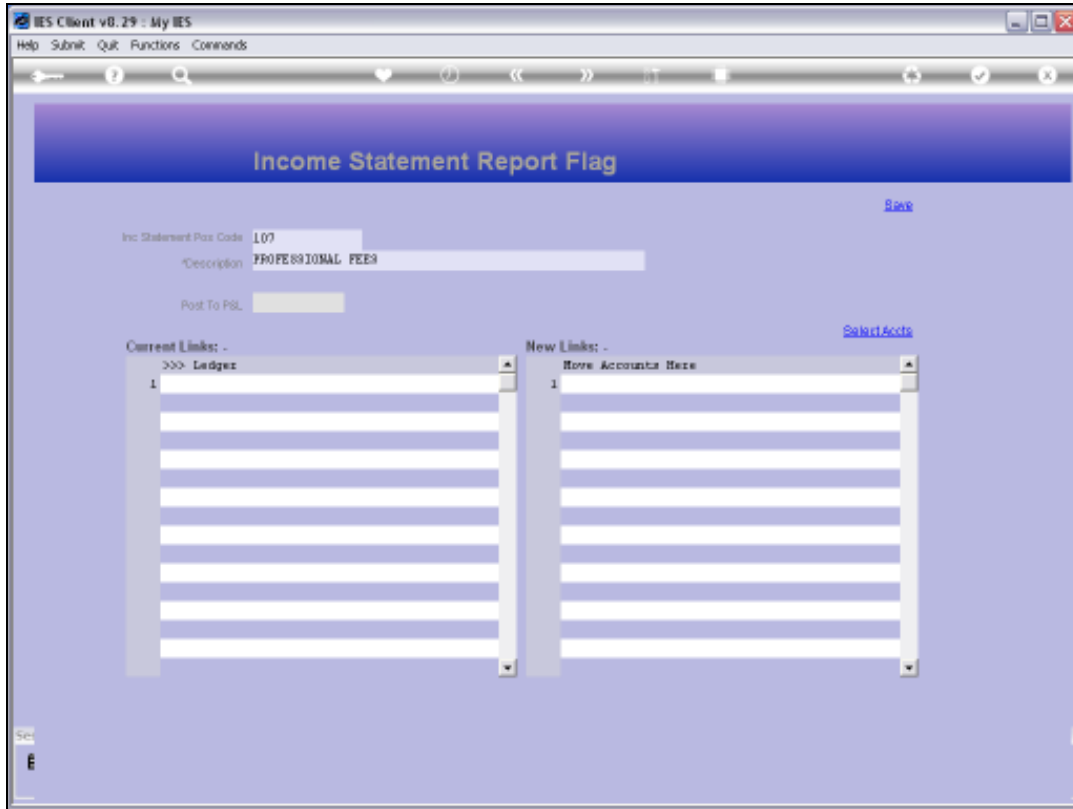
Slide 6
Slide notes:



Slide 7
Slide notes:

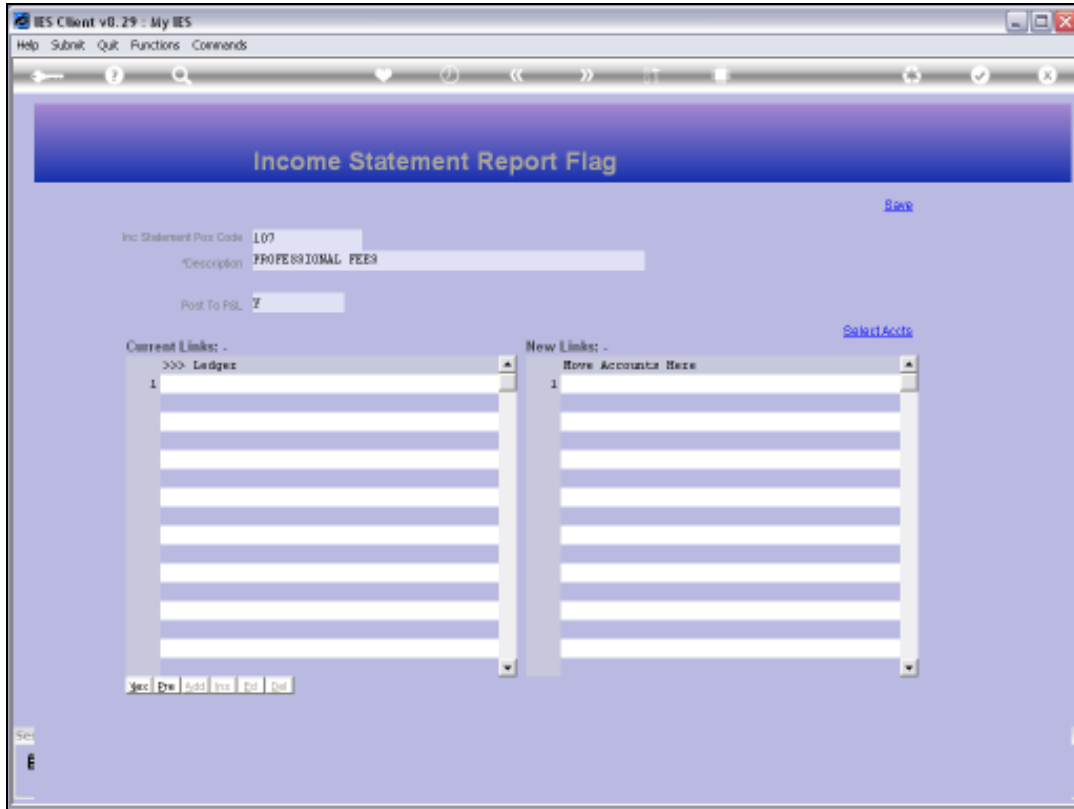


Slide 8
Slide notes:



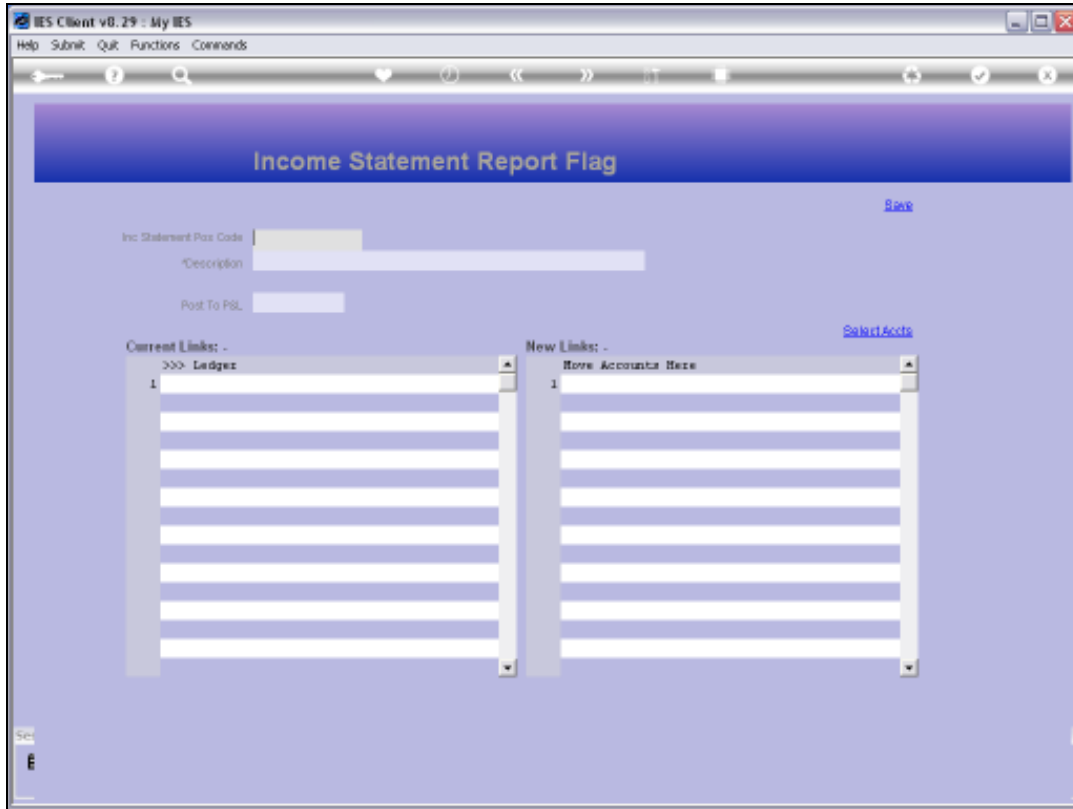
Slide 9

Slide notes: On the Report Flag masters, we also have an option to select Accounts that must inherit this Flag. To do that, we would choose 'Select Accounts'.



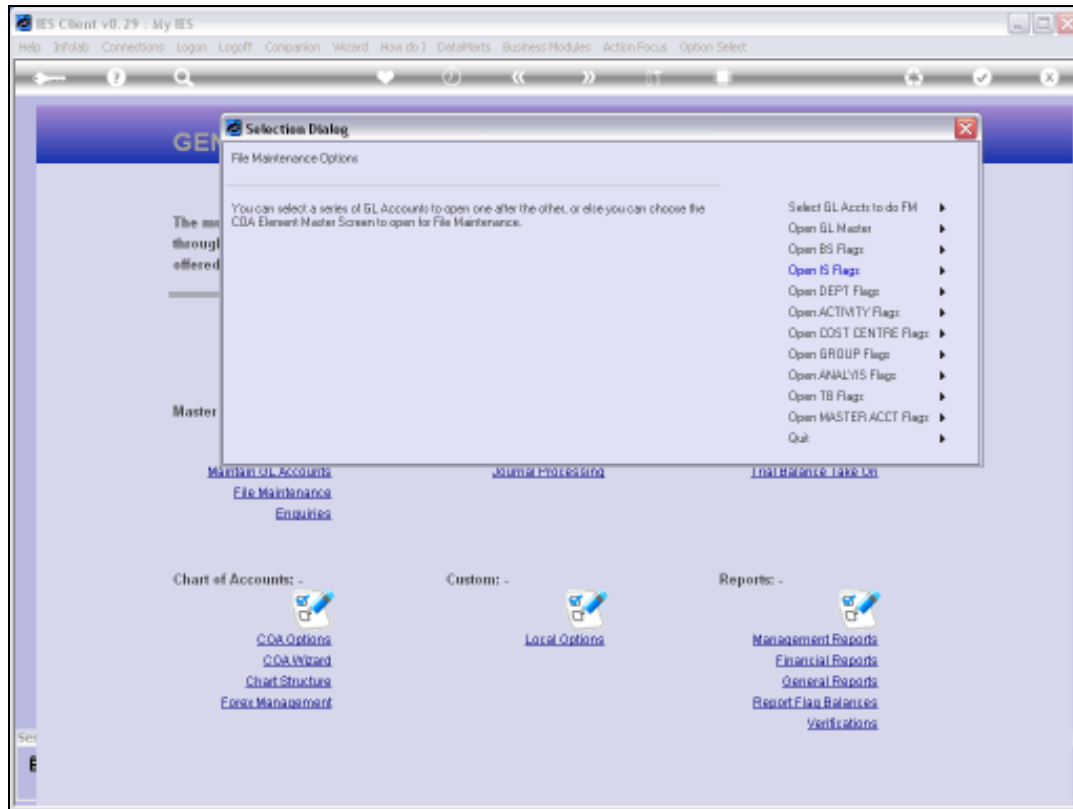
Slide 10

Slide notes:



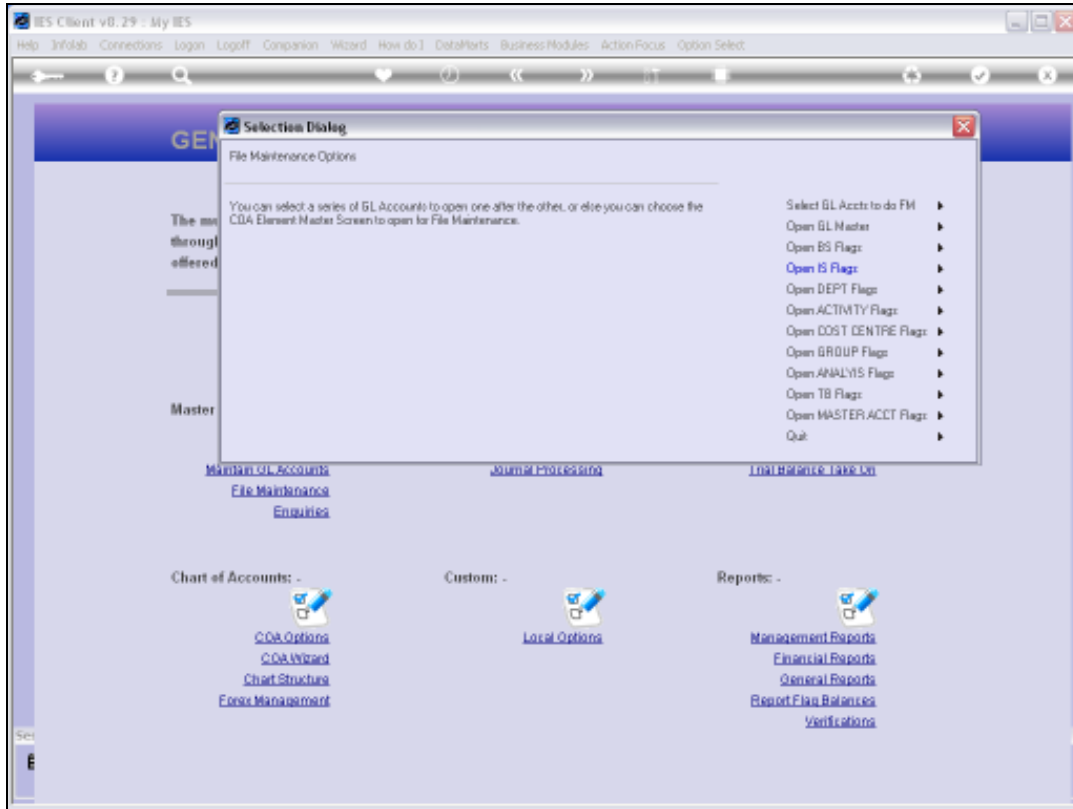
Slide 11

Slide notes: We may perform File Maintenance on multiple records. When we wish to return to the Chart wizard options, we just quit the screen.

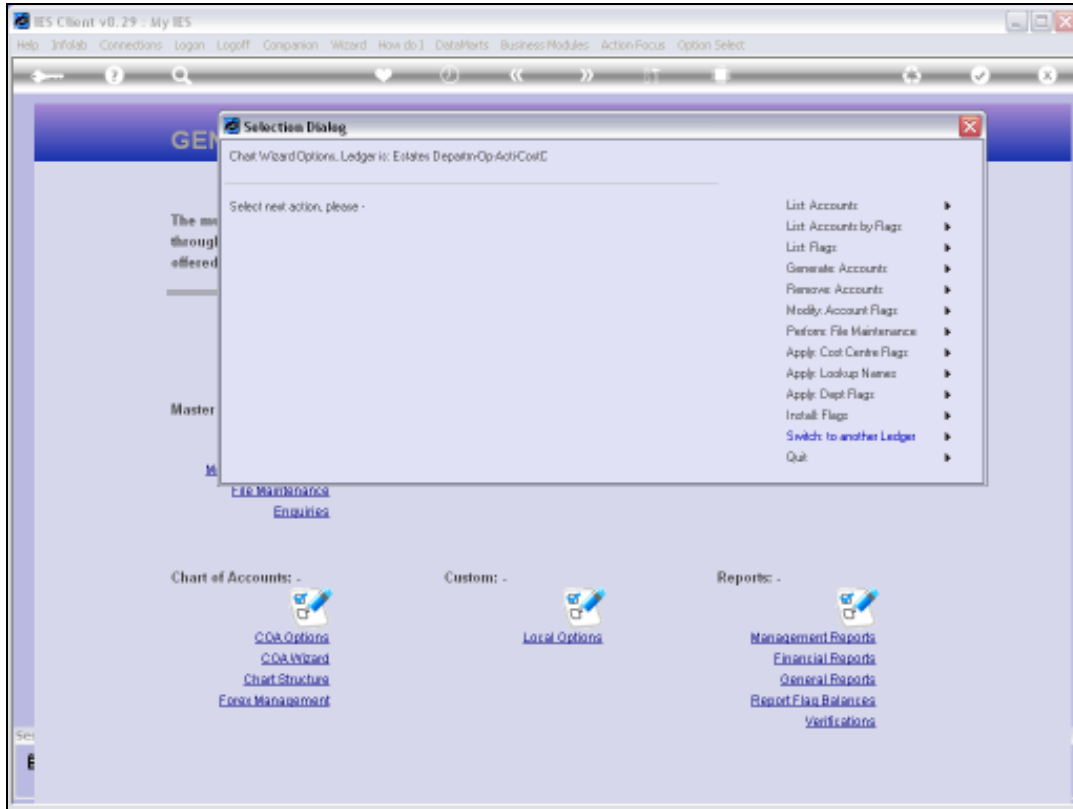


Slide 12

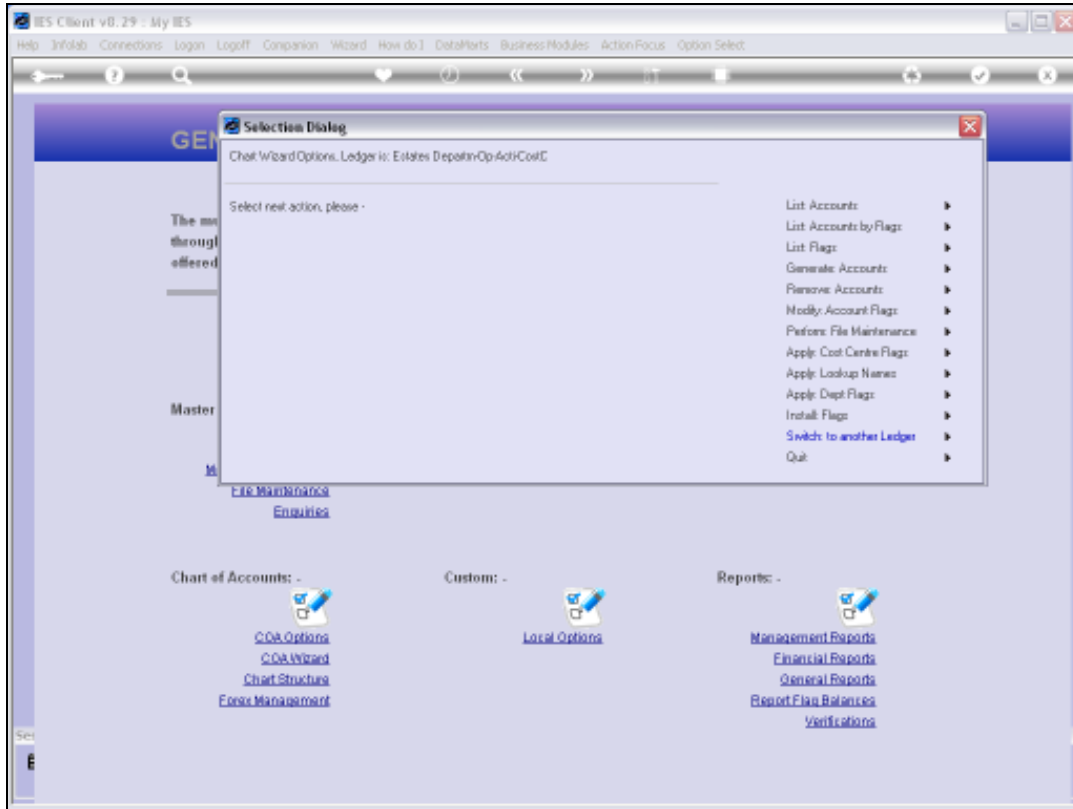
Slide notes: Now we can choose more File Maintenance, or we can quit to move back to the Chart main menu.



Slide 13
Slide notes:



Slide 14
Slide notes:



Slide 15
Slide notes: