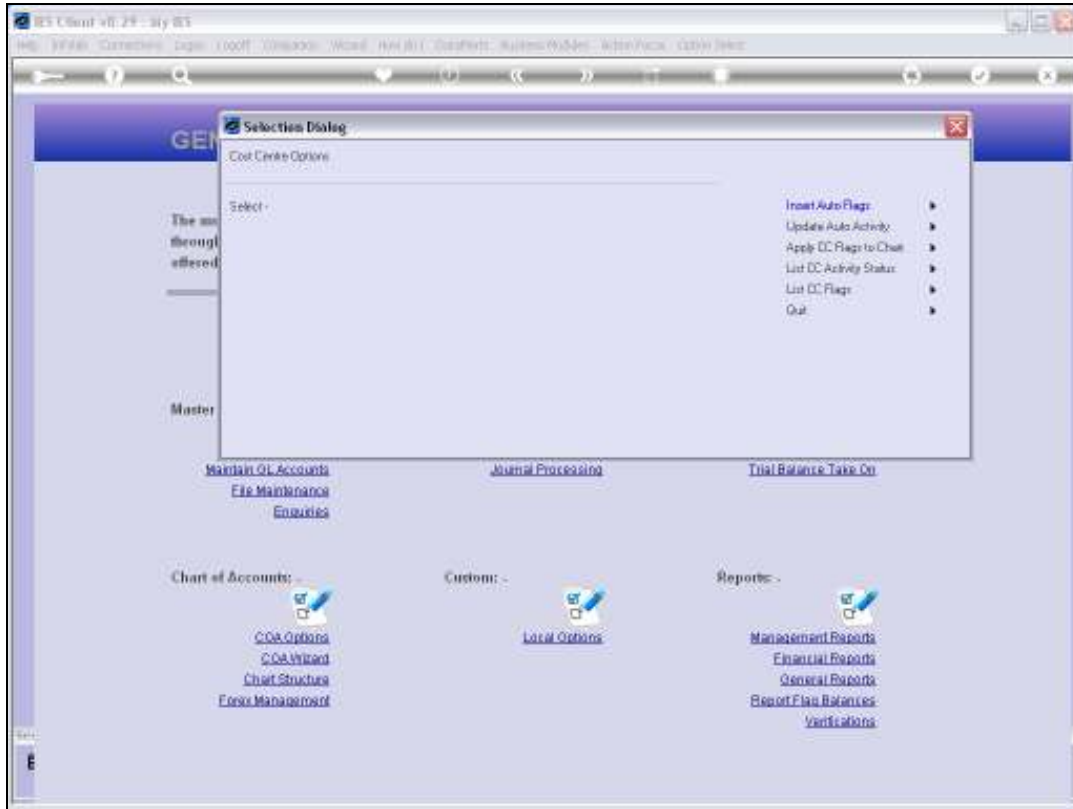


## Slide 1

Slide notes: There are different ways to organize our Chart in order to get the correct Report Flags on the correct Accounts. One of the ways to make this easier is to record appropriate Report Flags on the Cost Centre Flags, and then let the wizard apply all of this automatically across the Chart. We choose 'Apply Cost Centre Flags'.



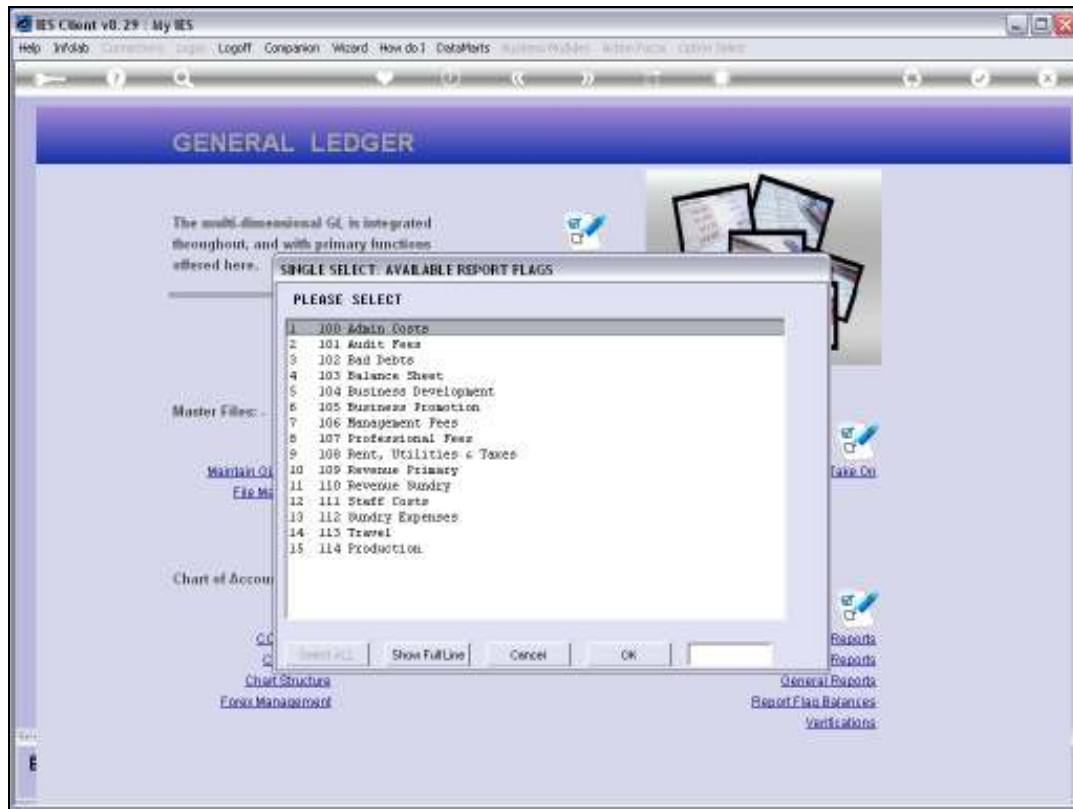
Slide 2

Slide notes: The 'Insert Auto Flags' option is our tool to get the appropriate Flags onto the Cost Centre Master Flags.



Slide 3

Slide notes: All of the Flag types listed here may be listed on the Cost Centres, and now we can choose which Flag type to work with.



Slide 4

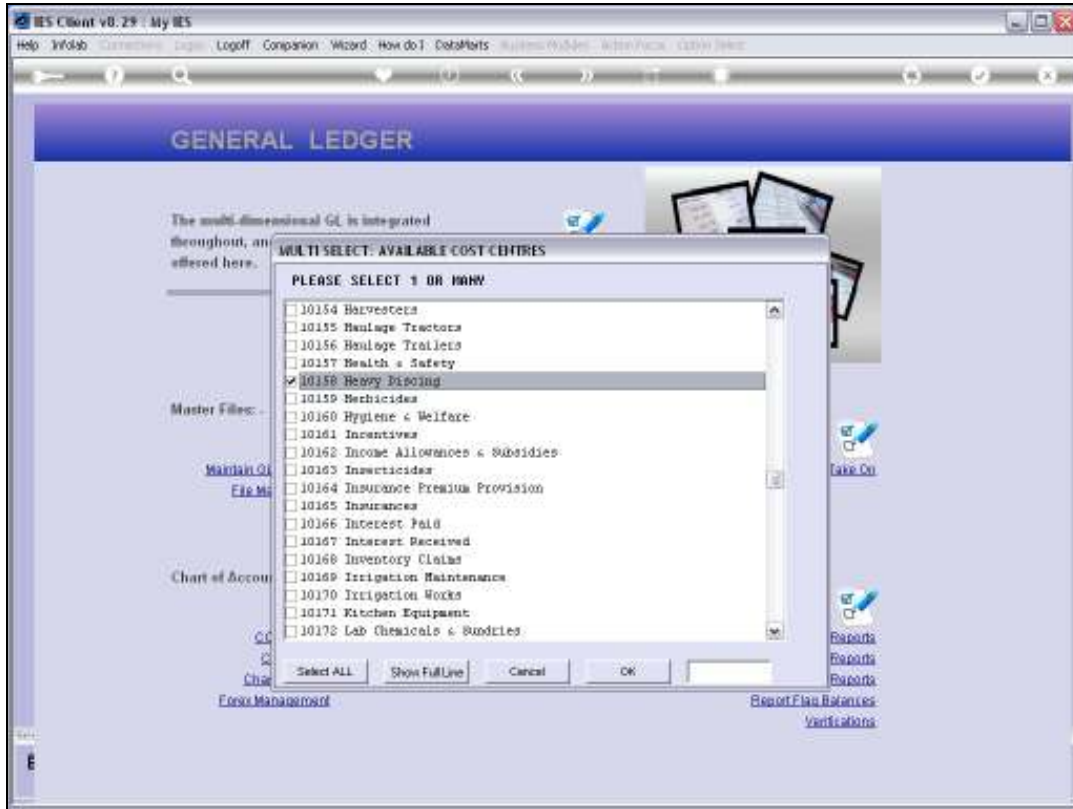
Slide notes: Once we select the Flag that will be inserted, we can then select many Cost Centres to be updated.



Slide 5  
Slide notes:

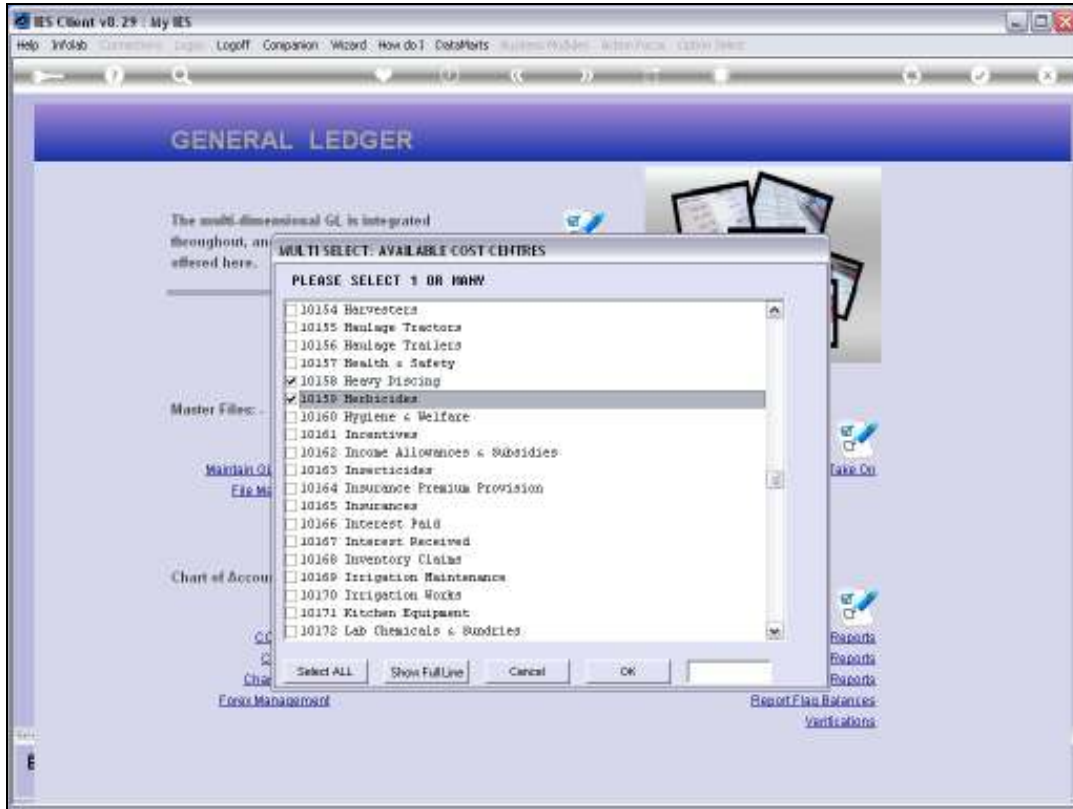


Slide 6  
Slide notes:



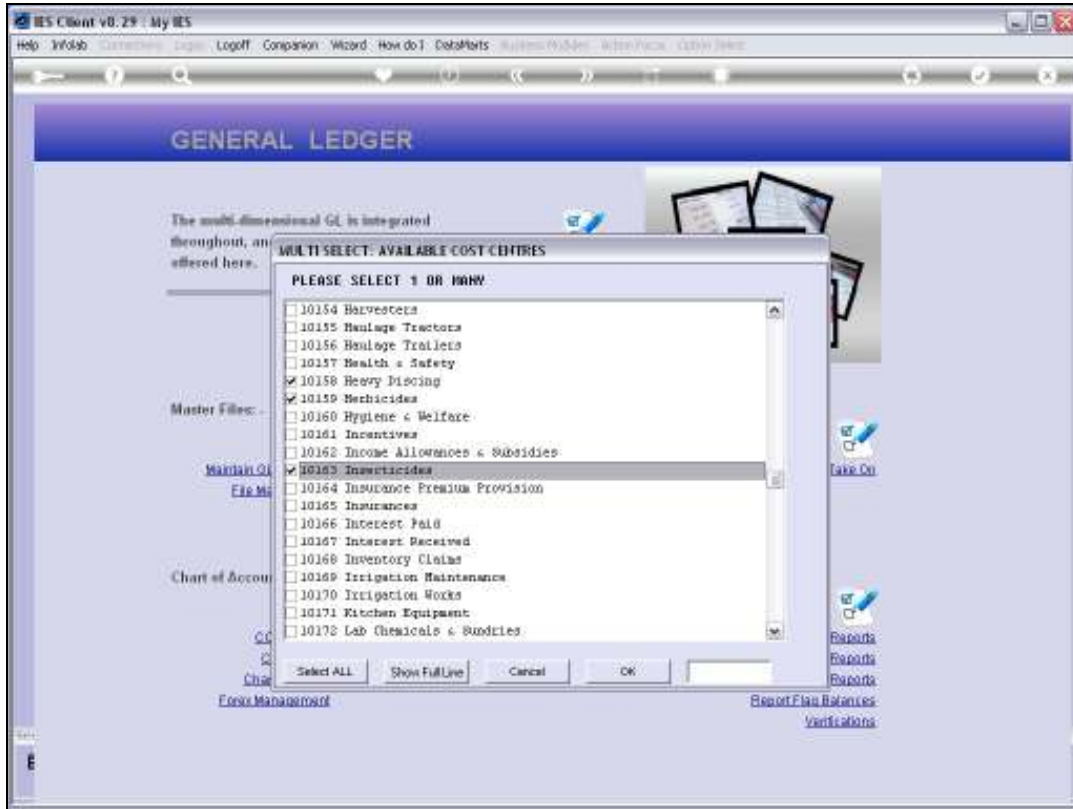
Slide 7

Slide notes:

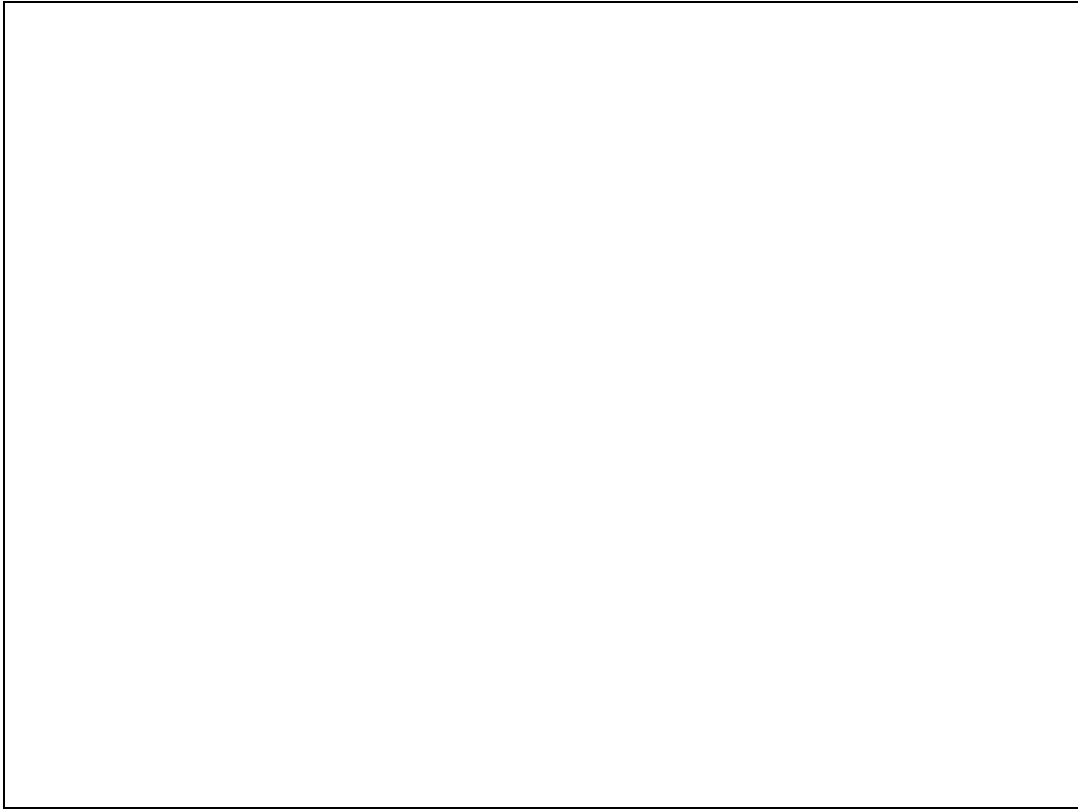


Slide 8  
Slide notes:



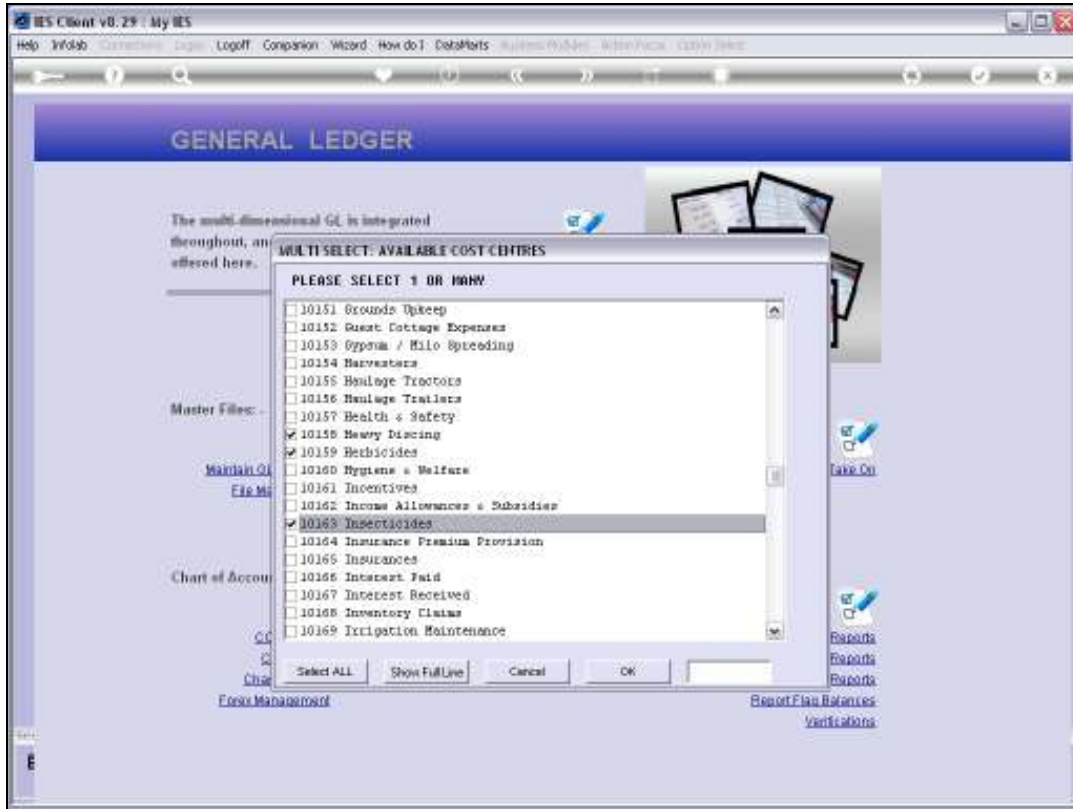


Slide 9  
Slide notes:



Slide 10

Slide notes:

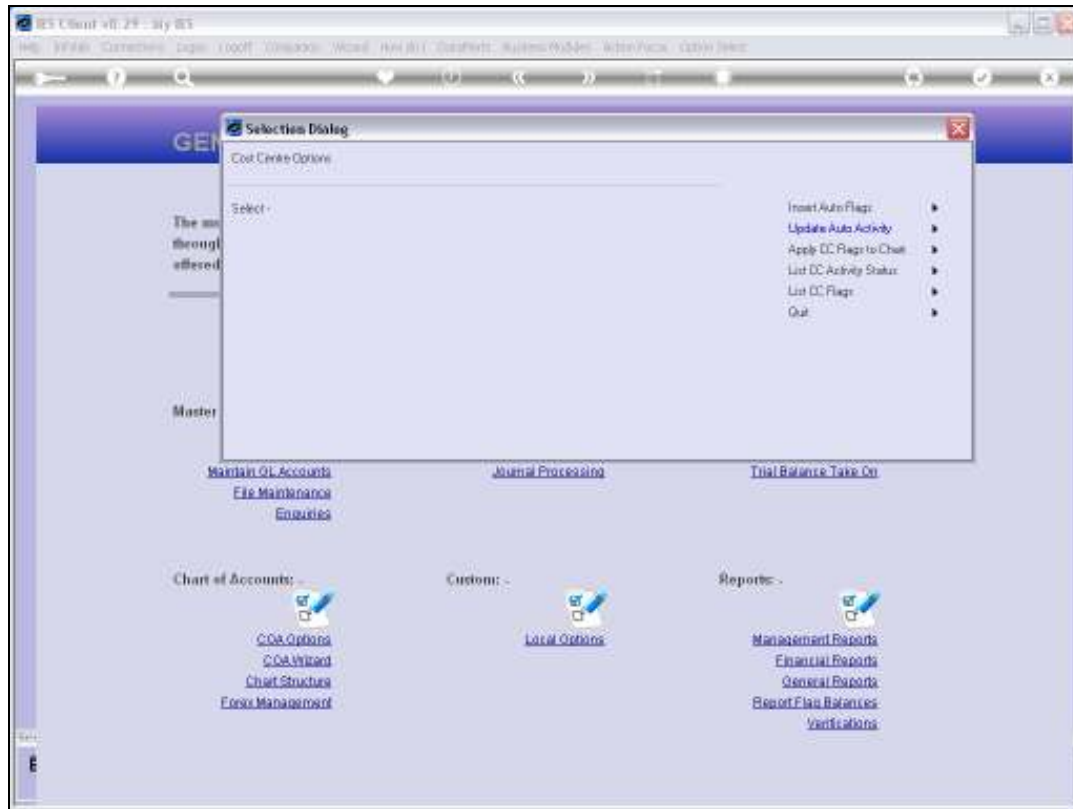


Slide 11  
Slide notes:



Slide 12

Slide notes: When we choose OK, then the Cost Centres are updated, and we are ready to perform the next update of our choice.



## Slide 13

Slide notes: We can continue to do Flag updates one after the other, until we have our Cost Centres well populated with the other Flag defaults, and then we can apply it all with the option to 'Apply CC Flags to Chart'.