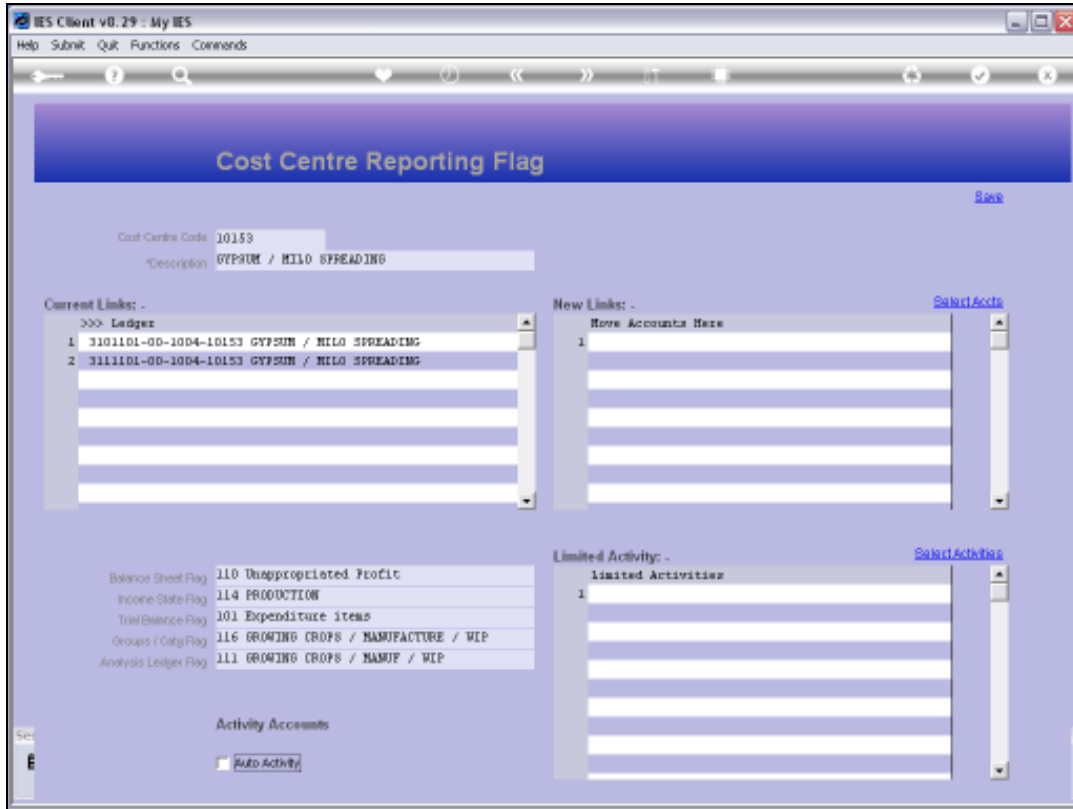


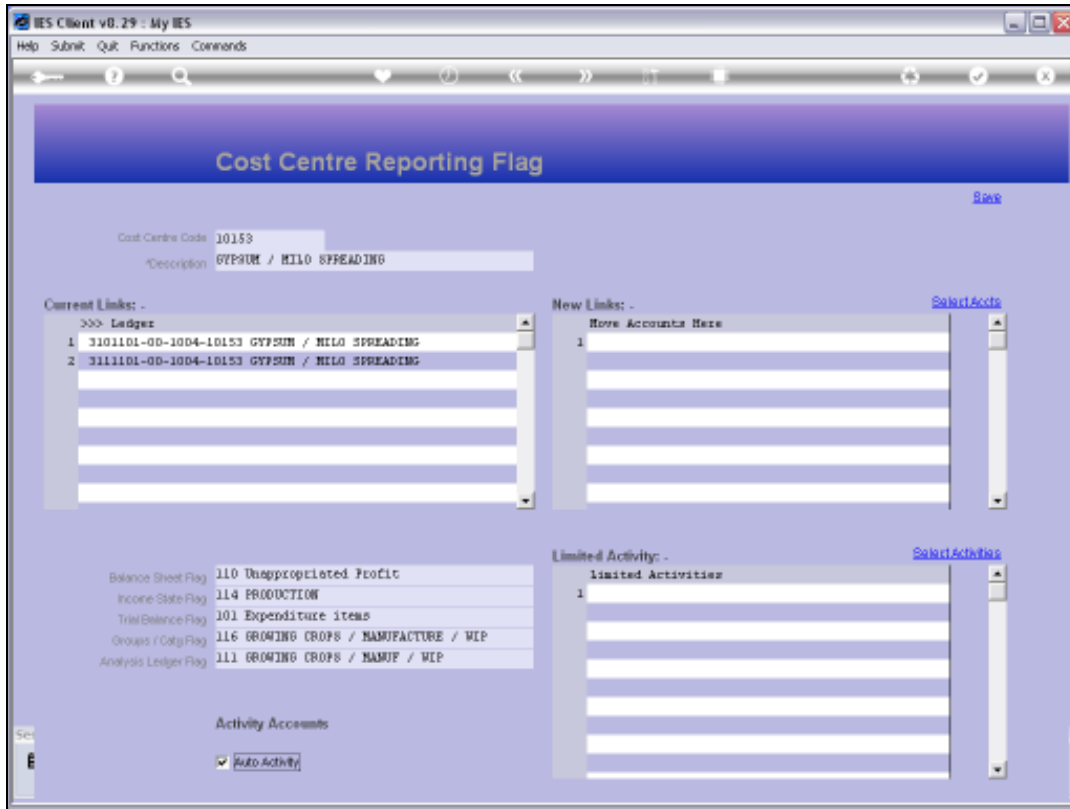
Slide 1

Slide notes: This is a Cost Centre Master Flag.

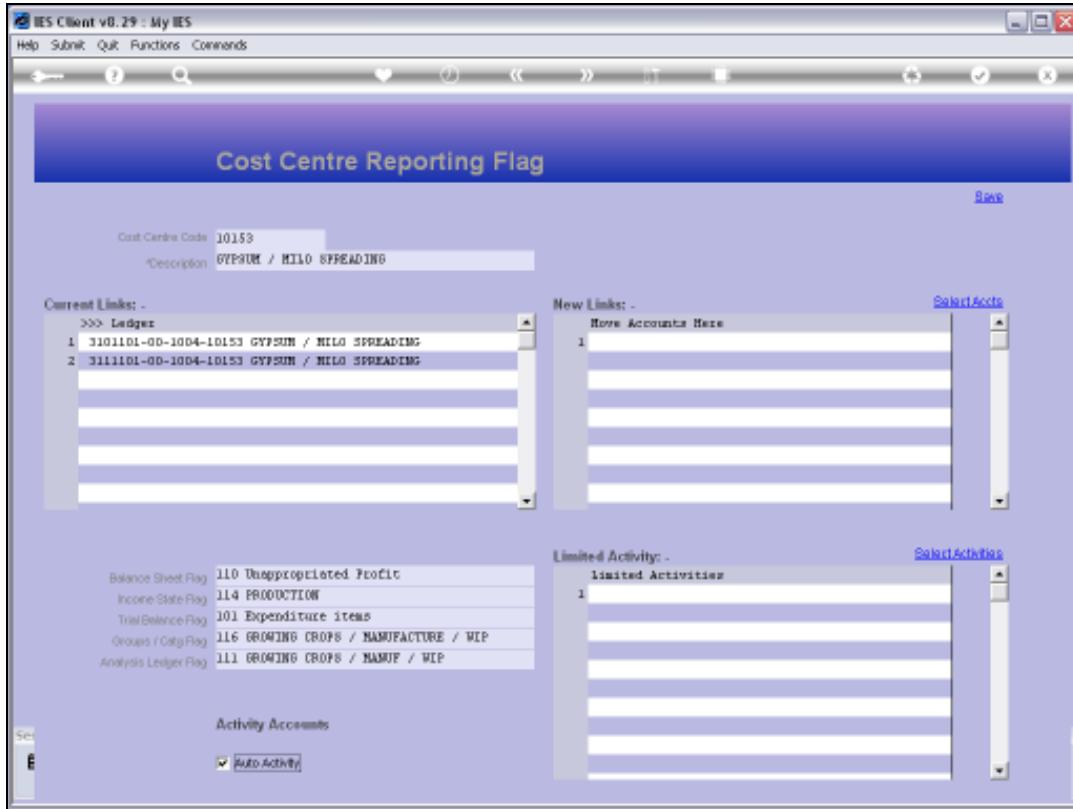


Slide 2

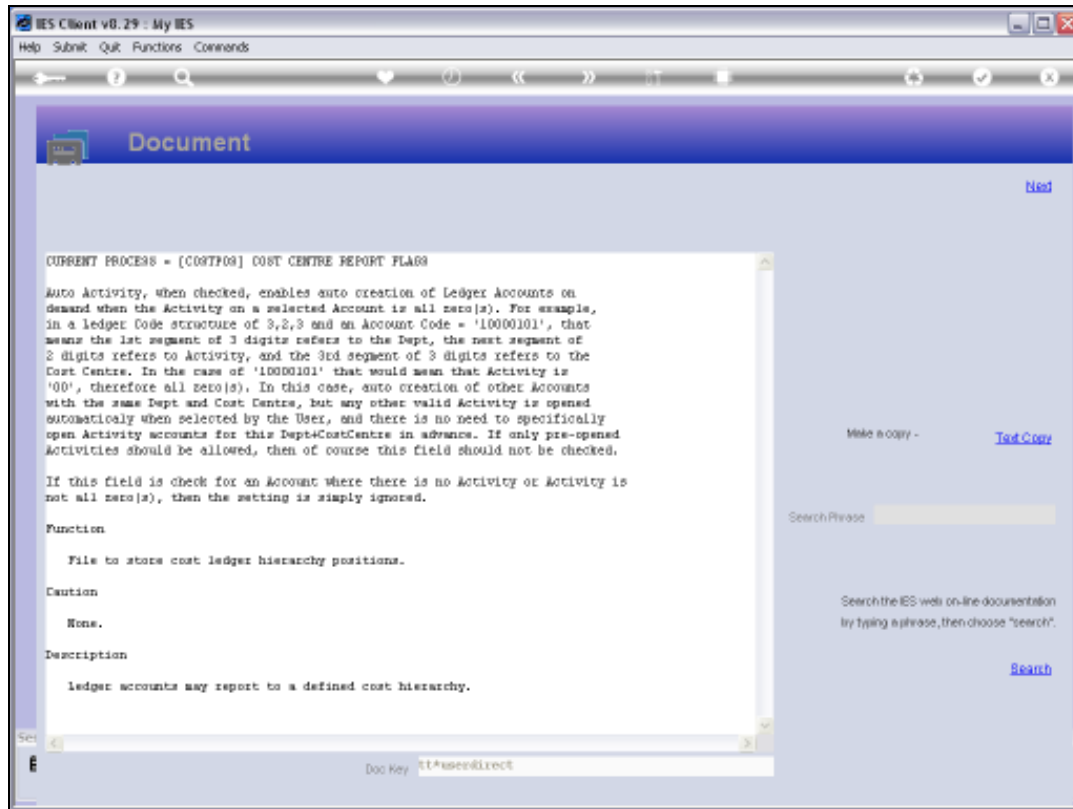
Slide notes: We have an option here to activate 'Auto Activity'. Clearly, we will not have Activities on all our Accounts, and for those where we will have Activities, it is a choice whether to open only the Zero Activity Account, and then to check 'Auto Activities', in which case the system will automatically open the necessary Activity Accounts on demand, when a User needs it.



Slide 3
Slide notes:

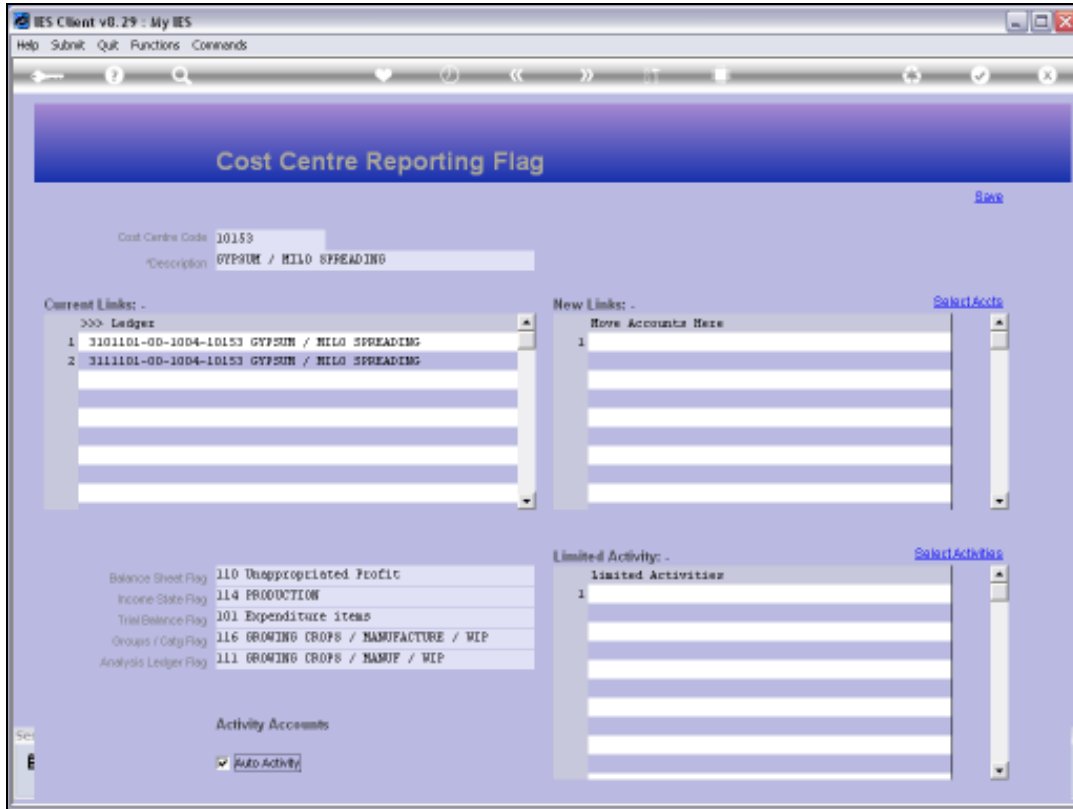


Slide 4
Slide notes:



Slide 5

Slide notes: The Help explains.



Slide 6
Slide notes:

IES Client v8.29 : My IES

Help Submit Quit Functions Commands

Cost Centre Reporting Flag

[Save](#)

Cost Centre Code: 10153
 Description: GYPSUM / MILO SPREADING

Current Links: - [Select Acts](#)

>>> Ledger
1 3101101-00-1004-10153 GYPSUM / MILO SPREADING
2 3111101-00-1004-10153 GYPSUM / MILO SPREADING

New Links: - [Select Acts](#)

None Accounts Here

1

Balance Sheet Flag: 110 Unappropriated Profit
 Income State Flag: 114 PRODUCTION
 Trial Balance Flag: 101 Expenditure Items
 Groups / Cost Flag: 116 GROWING CROPS / MANUFACTURE / WIP
 Analysis Ledger Flag: 111 GROWING CROPS / MANUF / WIP

Limited Activity: - [Select Activities](#)

Limited Activities

1

Activity Accounts

Auto Activity

Slide 7

Slide notes: When we use Auto Activity, we may also list limited Activities, in which case, only those Activities will qualify for auto opening with this Cost Centre.

IES Client v8.29 : My IES

Help Submit Quit Functions Commands

Cost Centre Reporting Flag

Cost Centre Code: 10153
Description: GYPSUM / MILO SPREADING

Current Links: -

>>> Ledger	
1	3101101-00-1004-10153 GYPSUM / MILO SPREADING
2	3111101-00-1004-10153 GYPSUM / MILO SPREADING

New Links: - [Select Accts](#)

Move Accounts Here

1	
---	--

Balance Sheet Flag: 110 Unappropriated Profit
Income Statement Flag: 114 PRODUCTION
Trial Balance Flag: 101 Expenditure items
Groups / Cost Flag: 116 GROWING CROPS / MANUFACTURE / WIP
Analysis Ledger Flag: 111 GROWING CROPS / MANUF / WIP

Limited Activity: - [Select Activity](#)

Limited Activities

1	
---	--

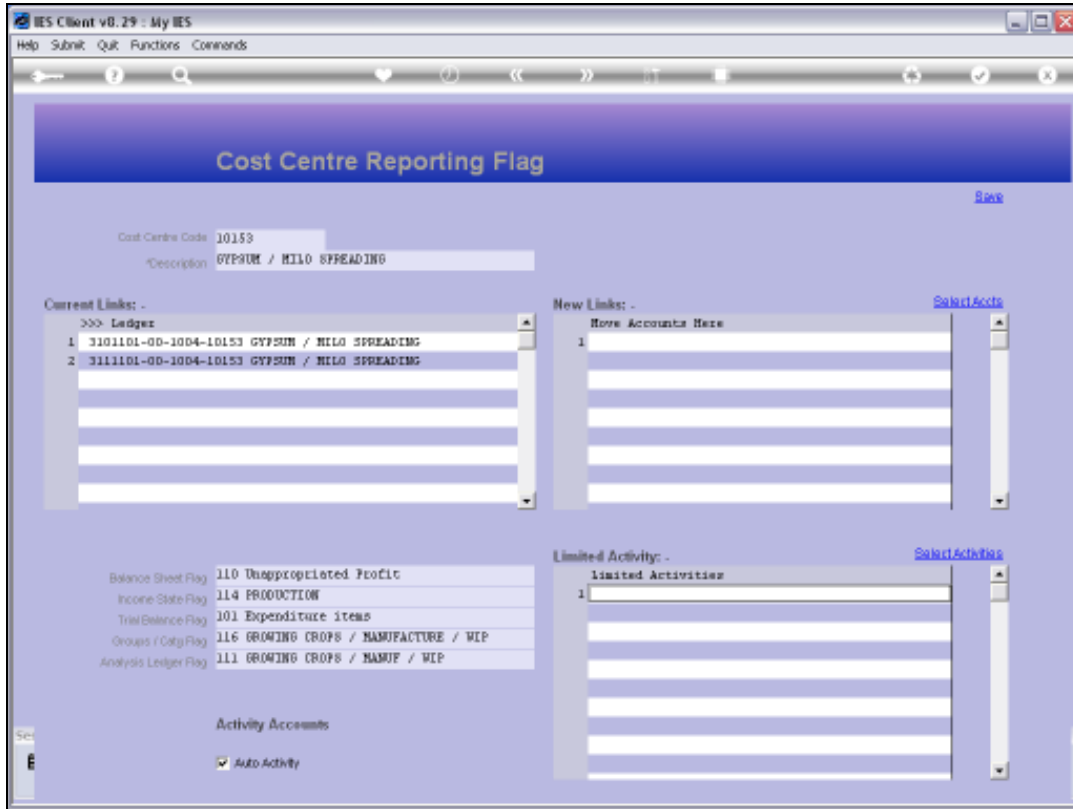
Activity Accounts

Auto Activity

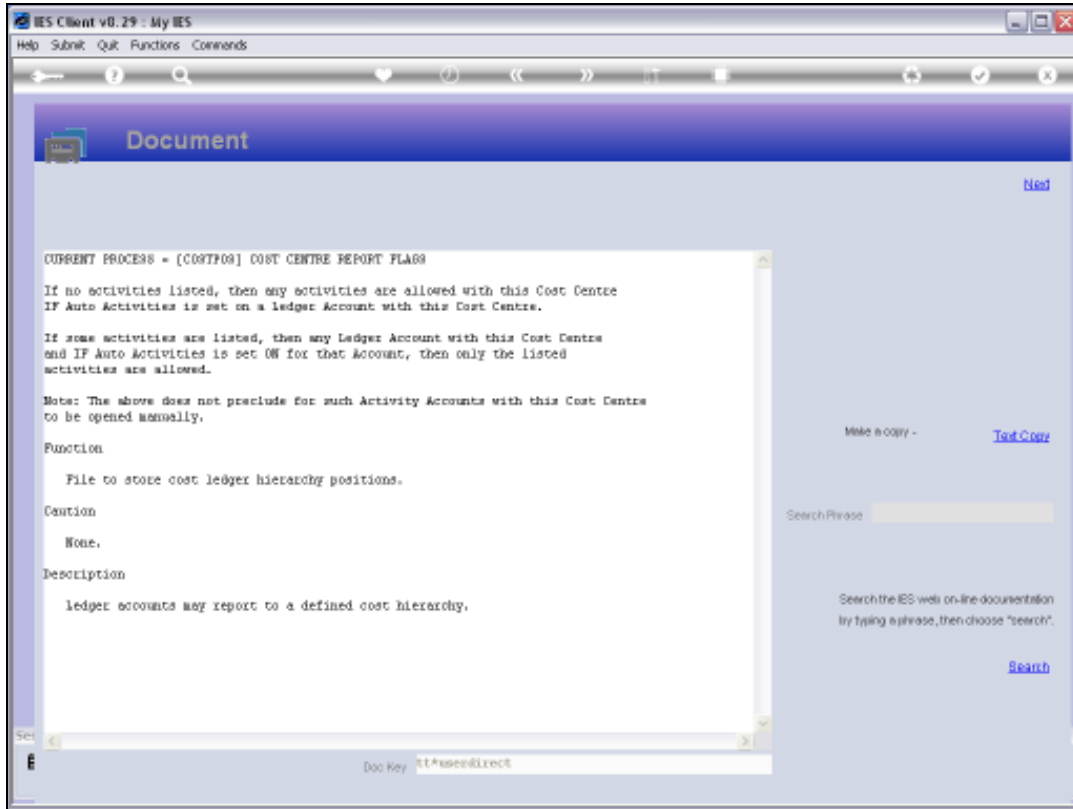
Rec Prev Add Inv Del Del

Slide 8

Slide notes: In fact, the Auto Activity setting is passed along to the GL Accounts that use this Cost Centre when we apply the Cost Centre Flags to the Chart, and it is on a Ledger Account itself where the setting is checked during operation, not on the Cost Centre Flag.

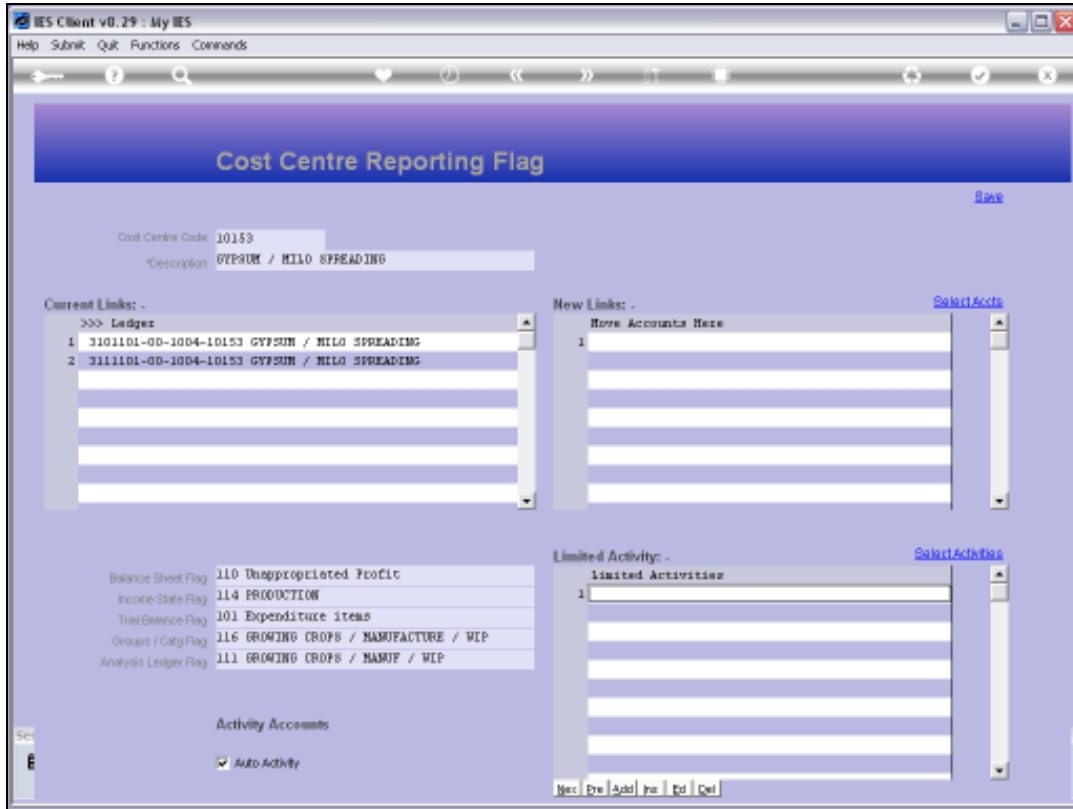


Slide 9
Slide notes:

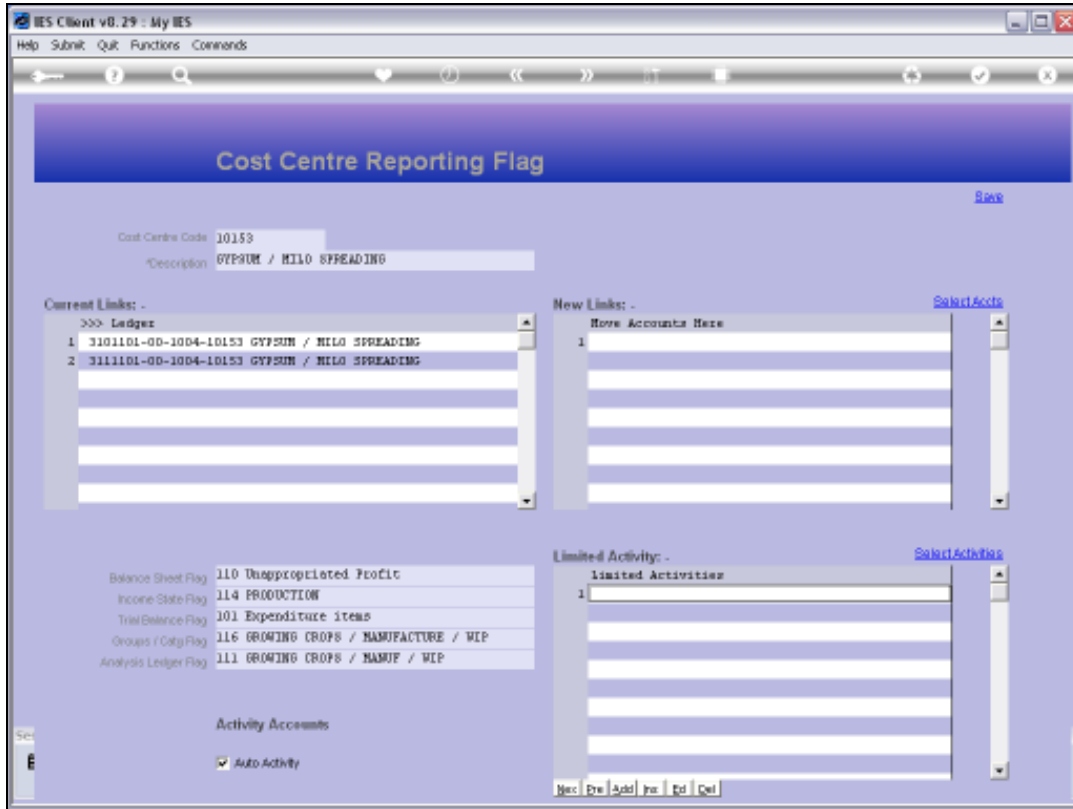


Slide 10

Slide notes: The Help explains about Limited Activities.

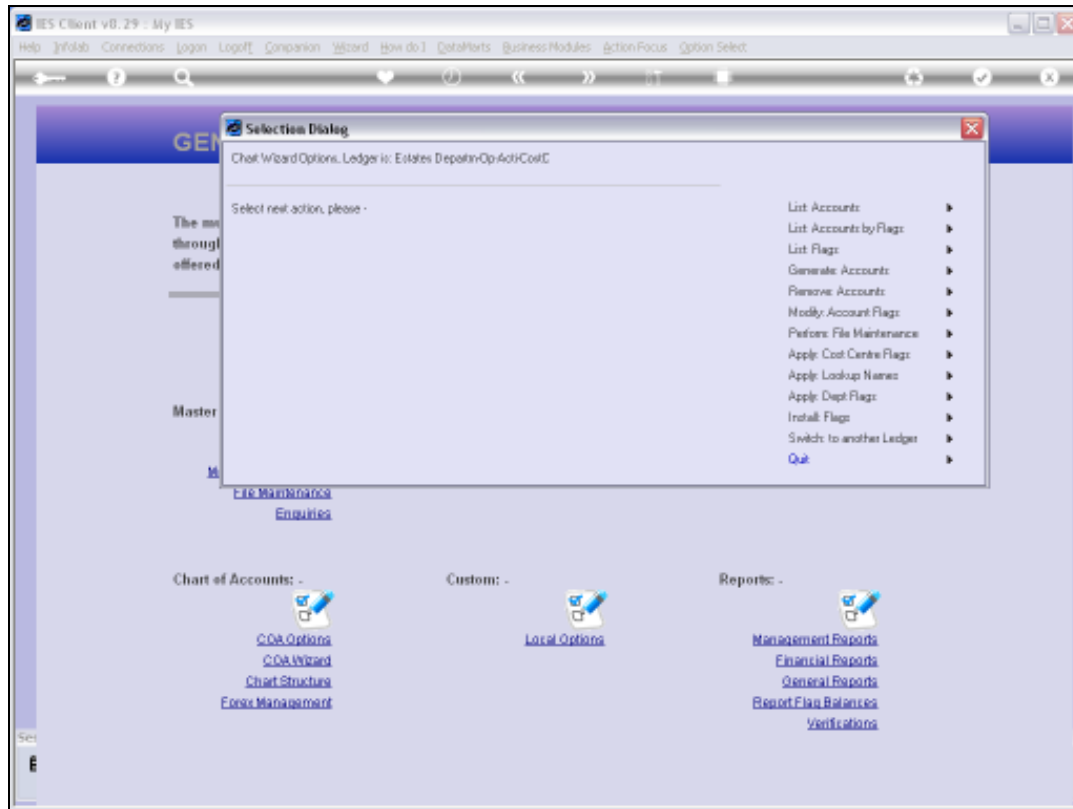


Slide 11
Slide notes:



Slide 12

Slide notes:



Slide 13

Slide notes: The Chart wizard has tools for us to update the 'Auto Activity' setting on many Cost Centres at a time. We choose 'Apply Cost Centre Flags'.



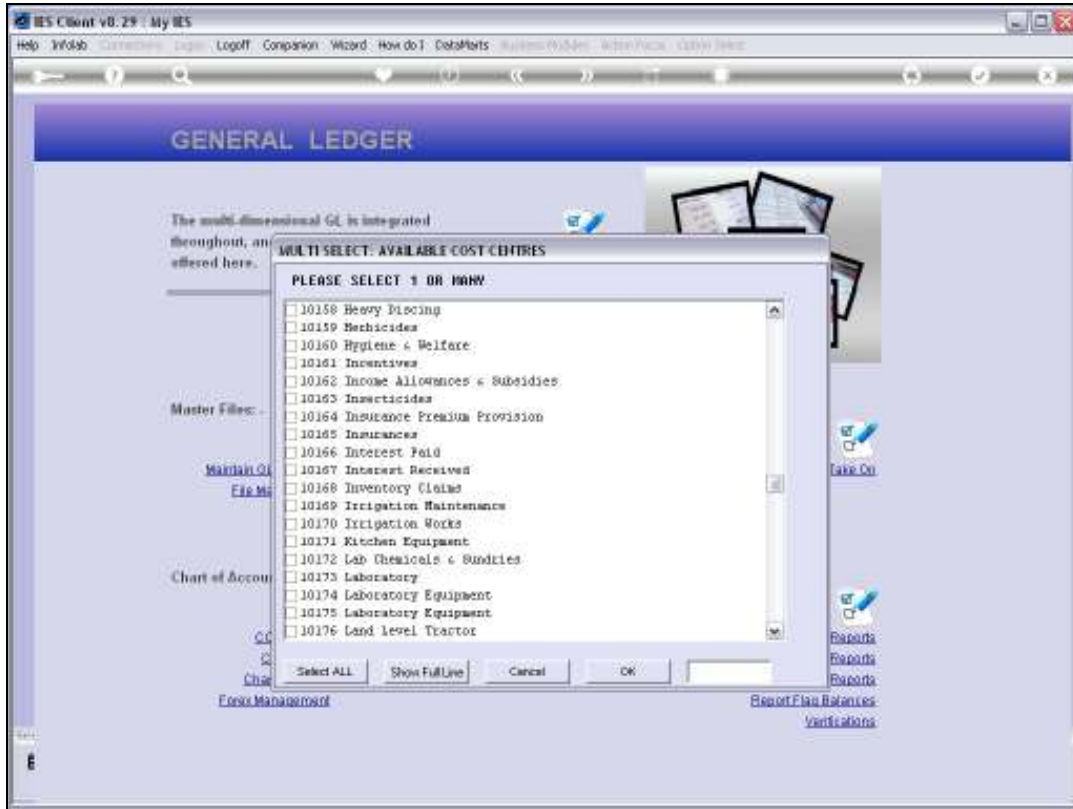
Slide 14

Slide notes: And then we choose 'Update Auto Activity'.



Slide 15

Slide notes: We can switch it ON or OFF, and then we select the Cost Centre Flags for which the operation must be performed.



Slide 16
Slide notes:

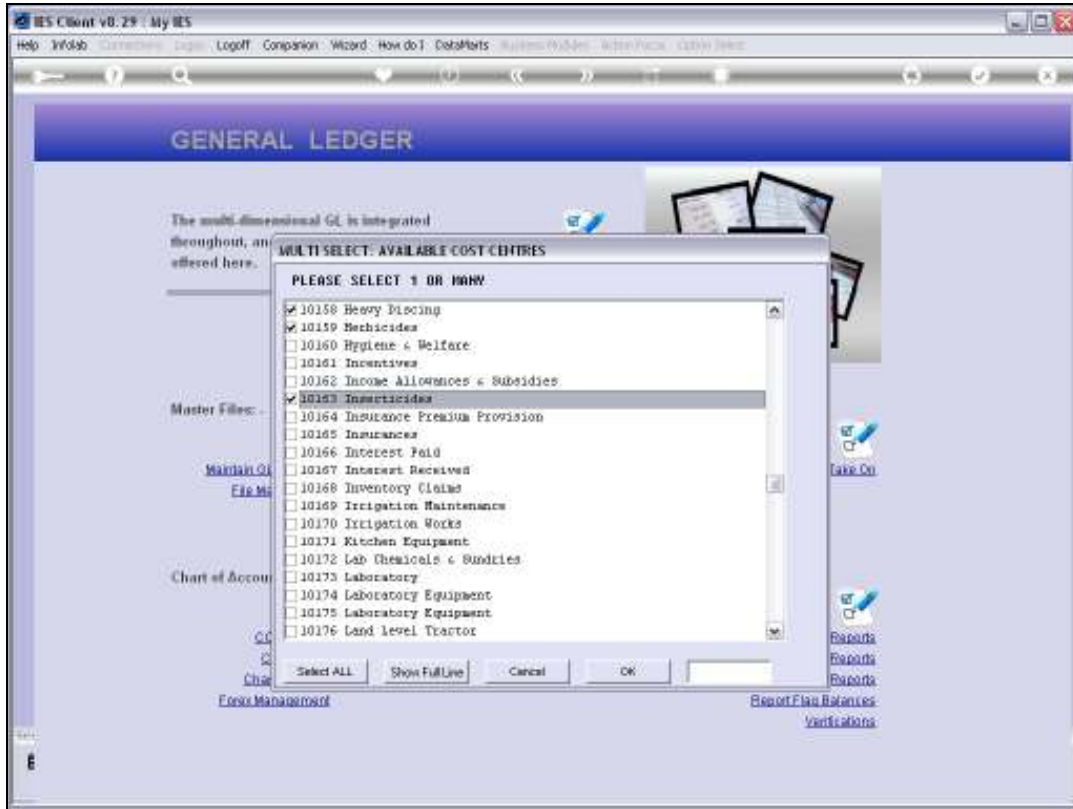


Slide 17

Slide notes:



Slide 18
Slide notes:



Slide 19

Slide notes: When we choose OK, the update is performed and we are ready for the next instruction.



Slide 20
Slide notes: