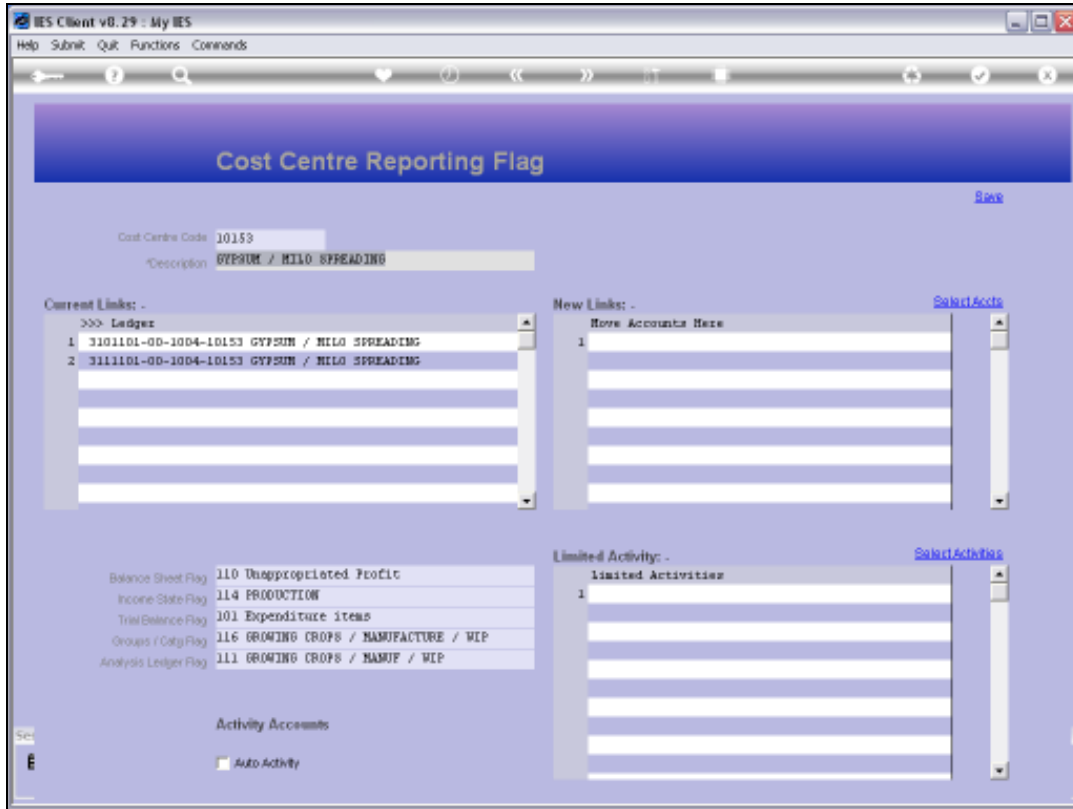
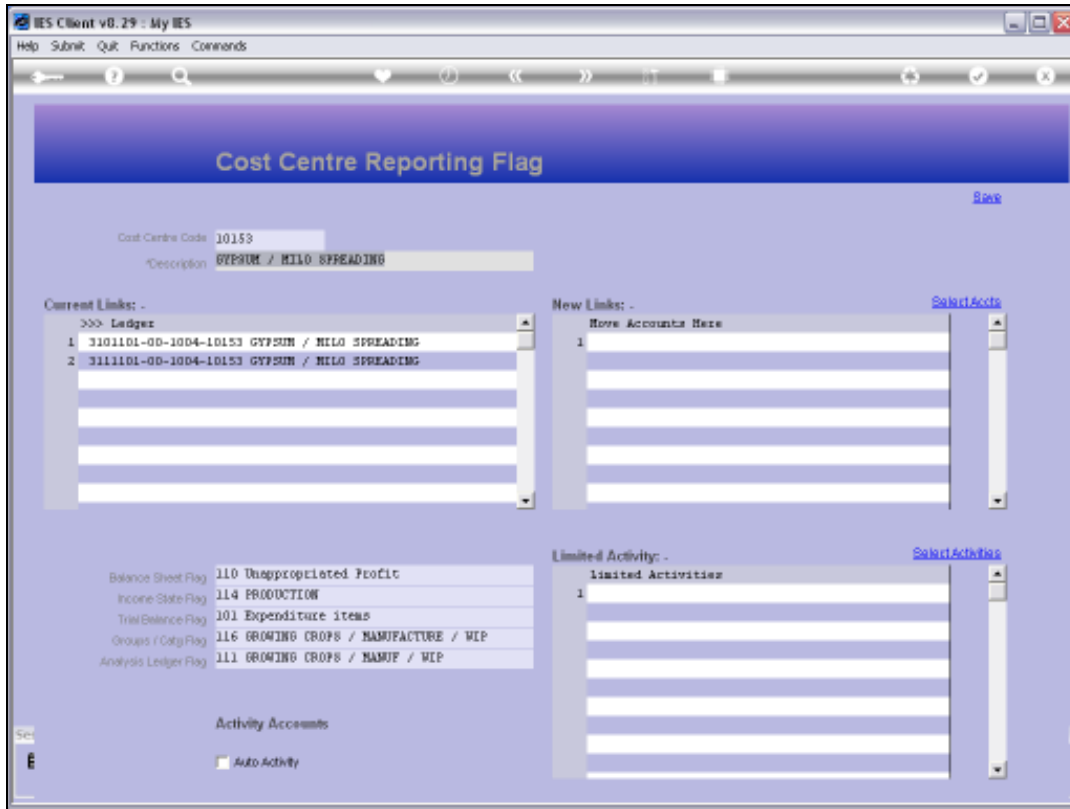


## Slide 1

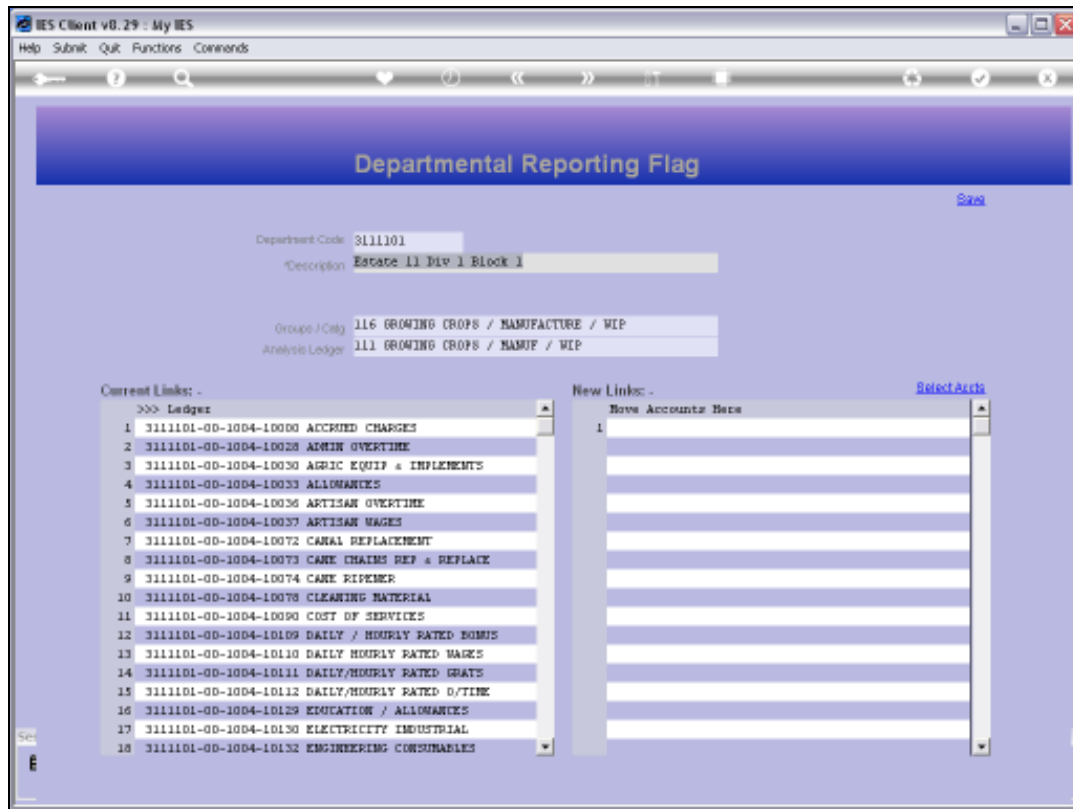
Slide notes: On the Cost Centre Flags, we have the option to provide defaults for any of: BSPOS, ISPOS, TRIALBPOS, OTHER1POS and OTHER2POS. If we list any of these default Flags, as shown in this example, then the Chart wizard can force these settings to automatically be in compliance on all Accounts with this Cost Centre.



Slide 2  
Slide notes:

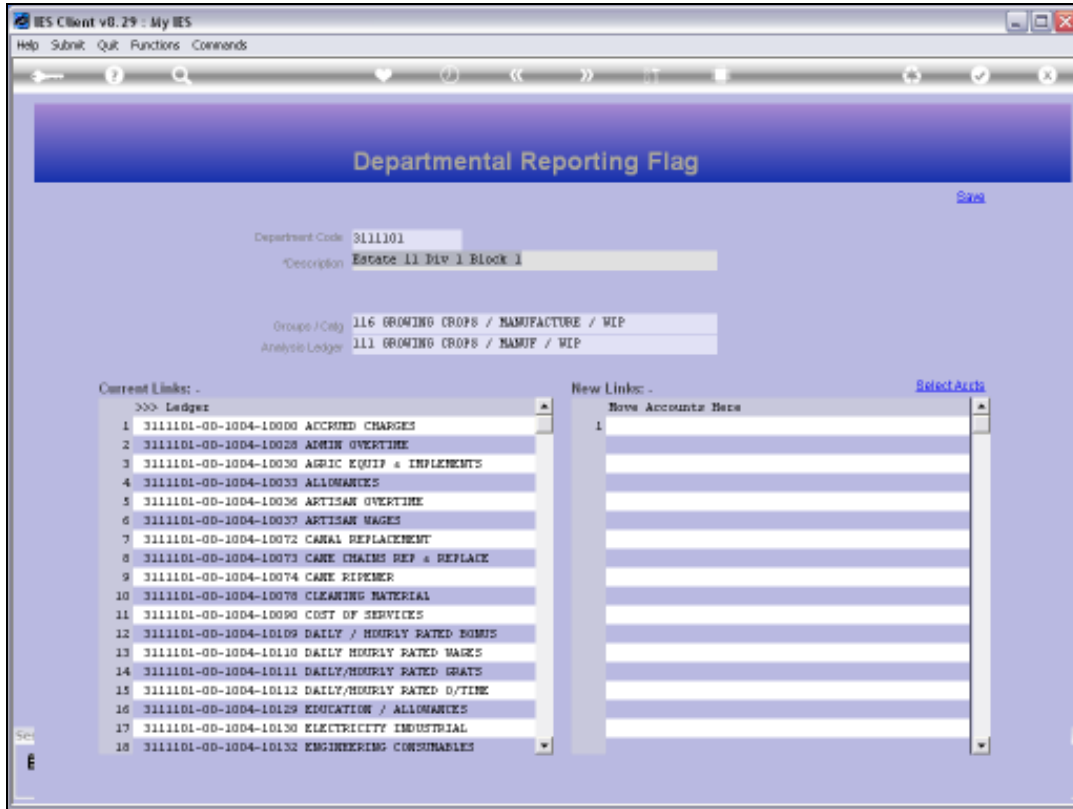


Slide 3  
Slide notes:

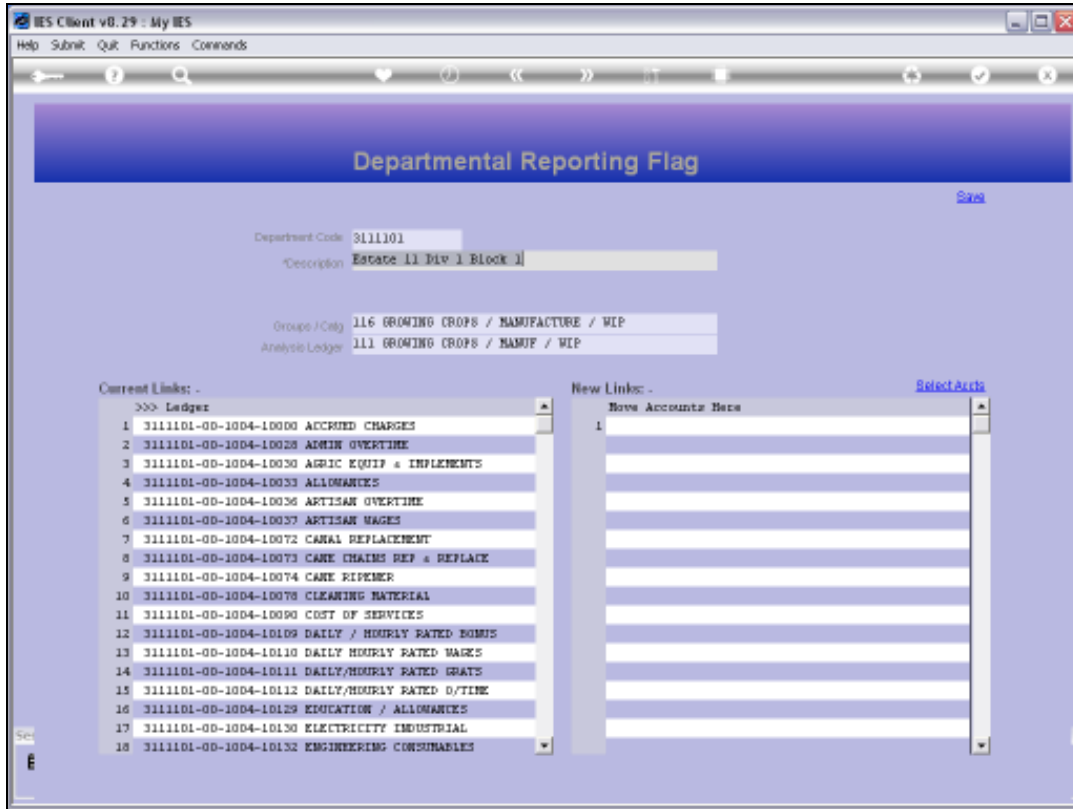


## Slide 4

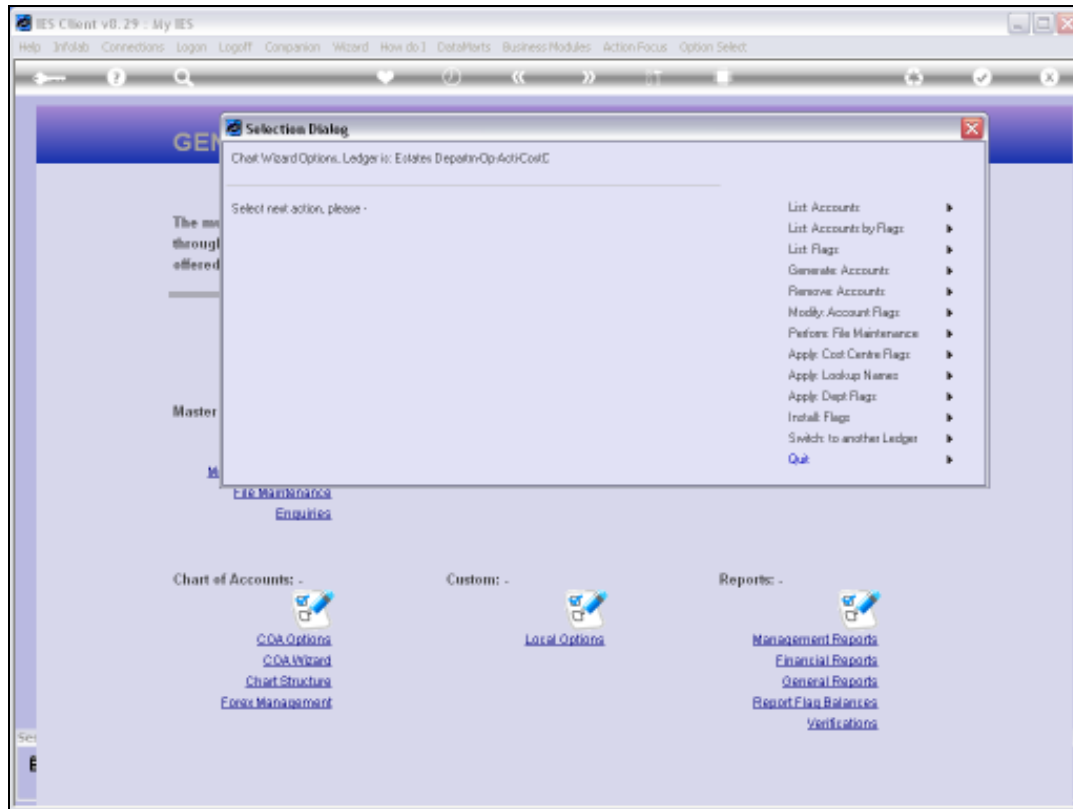
Slide notes: For 2 of the same Flags, e.g. Groups and Analysis, we may also specify it on the Department master. Depending on the Chart design, there are cases when it is convenient for some Departments to force these 2 Flags from the Department. When the Chart wizard updates Cost Centre Flags, then it will in the 1st instance update according to Flags as set on the Cost Centre, but then if these 2 Flags are also set on the Department in the case of any Account and the Department it belongs to, then the Flags set on the Department will take preference.



Slide 5  
Slide notes:



Slide 6  
Slide notes:



## Slide 7

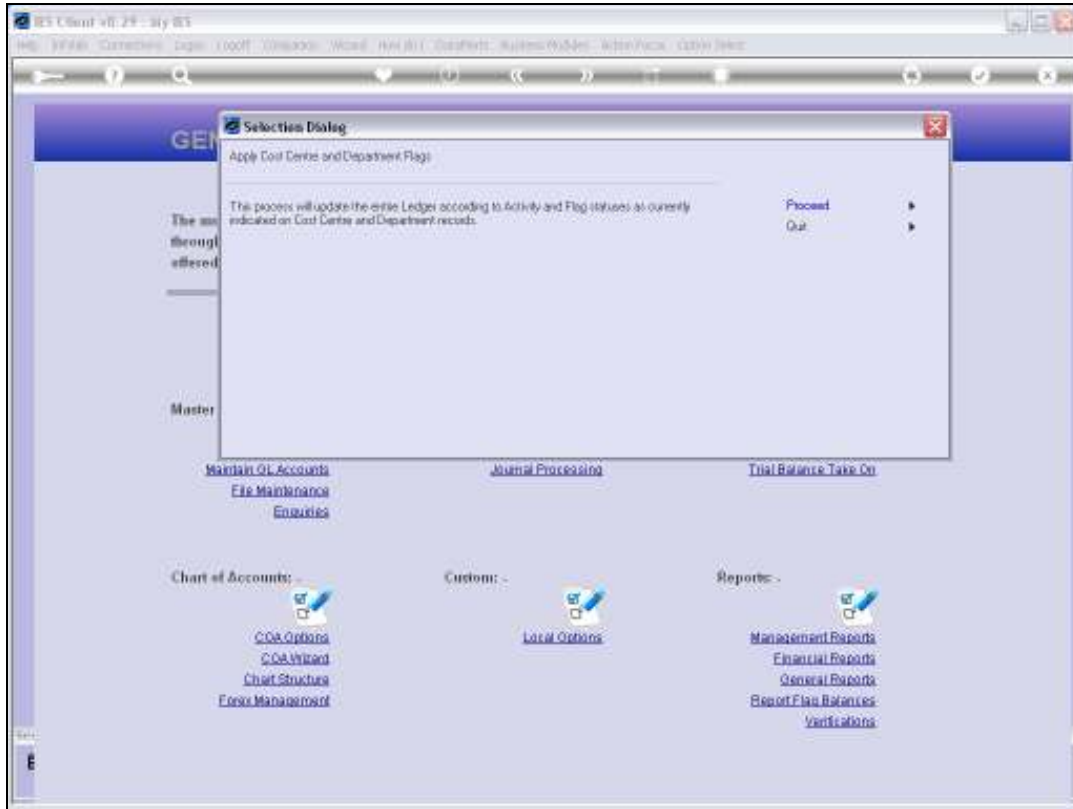
Slide notes: To automatically install default Flags as set on Cost Centres and Departments, to Accounts in this Ledger, we choose 'Apply Cost Centre Flags'.



Slide 8

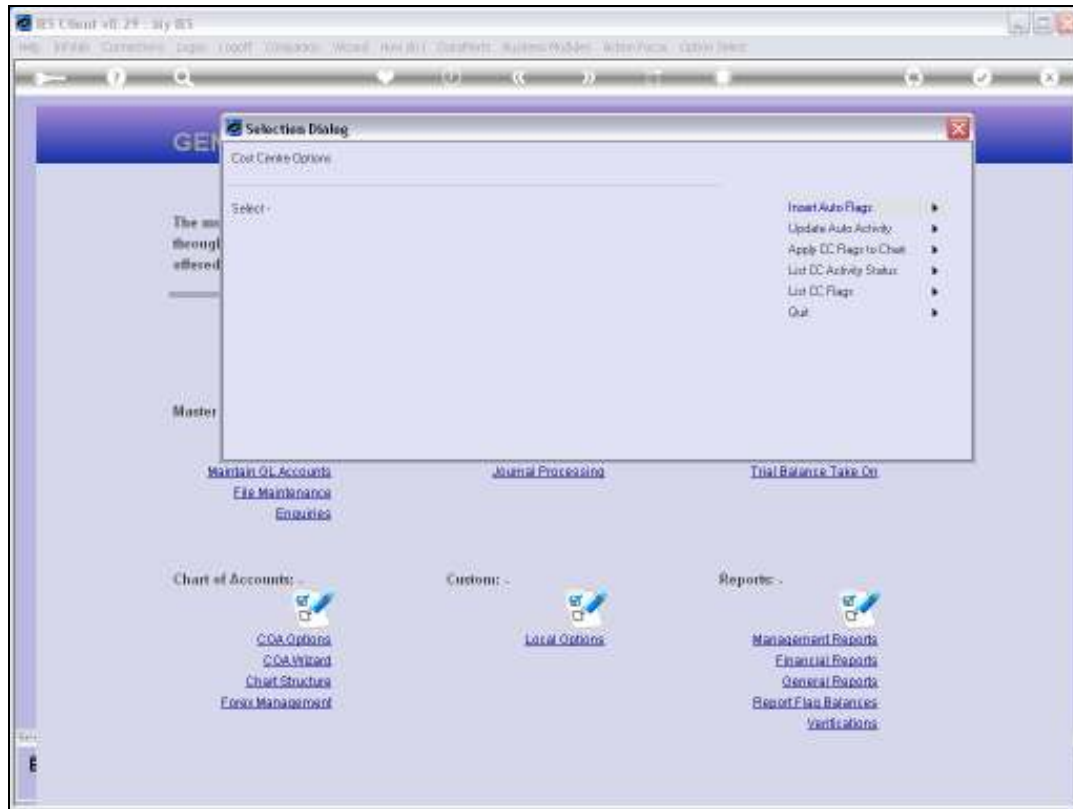
Slide notes: And then we choose 'Apply CC Flags to Chart'.





Slide 9

Slide notes: The process will potentially update the entire Ledger, as may be applicable.



### Slide 10

Slide notes: And if we choose 'proceed' then we can consider it done. We can safely apply this update whenever we have made some changes to Flags on the Cost Centres and Departments, even in a "live" Chart that is currently being used.



Slide 11  
Slide notes: