

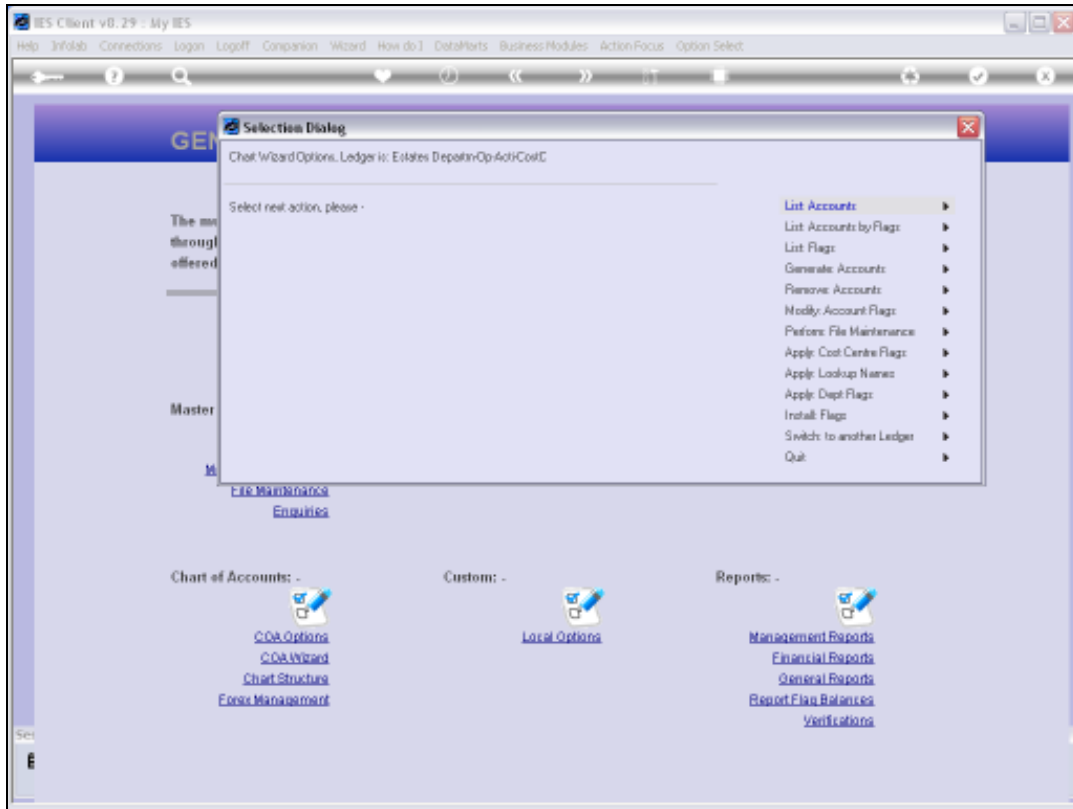
Slide 1

Slide notes: The Lookup Names are automatically generated by the wizard when we choose to do this.

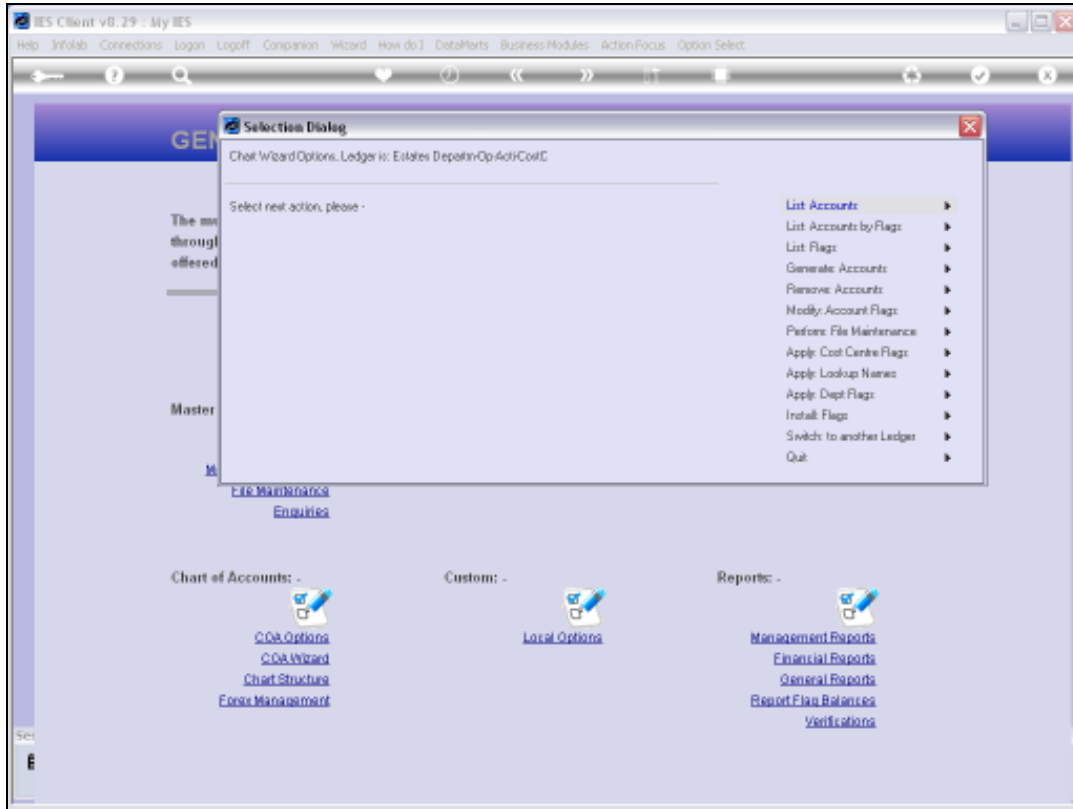


Slide 2

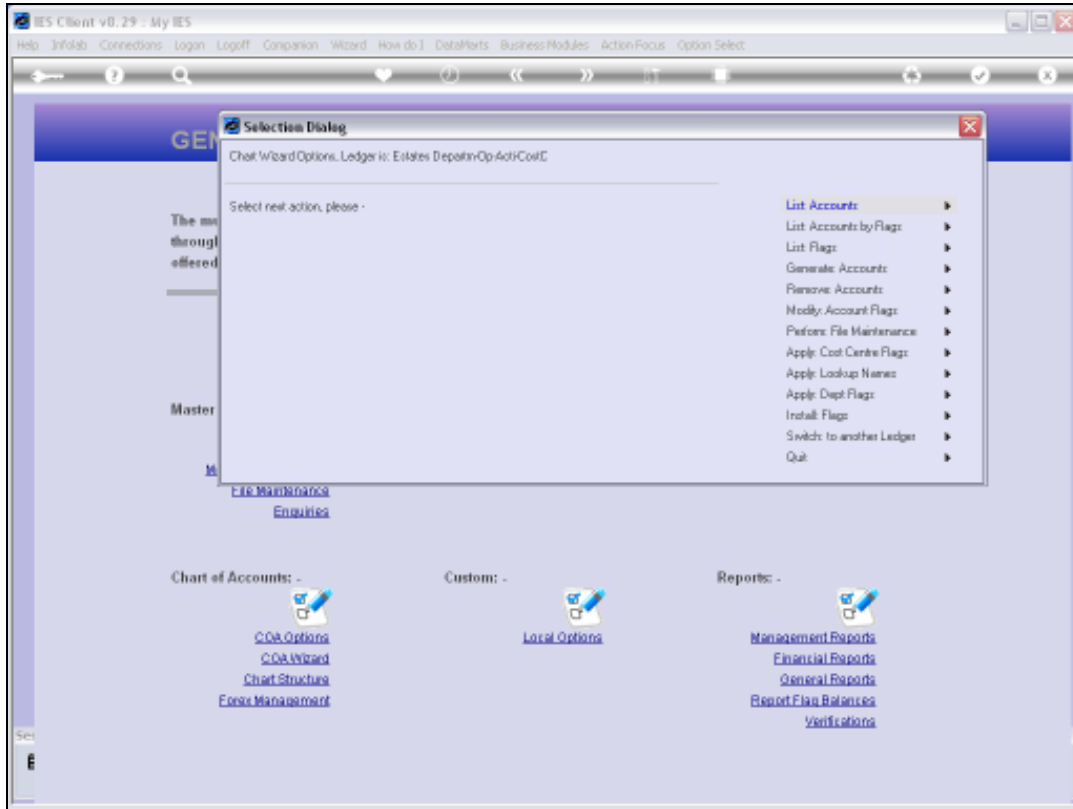
Slide notes: When we work with individual Accounts, the Lookup Name for the Account is always updated when we save any changes to the Account. Not so when we work with the Chart wizard. Because we potentially change hundreds or thousands of Accounts at a time, the Lookup Names are not updated until we choose to perform the update function, i.e. probably at the end of a working session with a Ledger.



Slide 3
Slide notes:



Slide 4
Slide notes:



Slide 5
Slide notes:

IES Client v8.29 : My IES

Help InfoLab Connections Login Logout Companion Wizard How do I DataMarts Business Modules ActionFocus Option Select

GENERAL LEDGER MASTER

Account Key: [Open New Account](#)

Ledger Account: [Acct Detail](#)

Description:

Managed Currency: LOCAL

Current Month: 0.00

Balance YTD: 0.00

Transaction Status: Open

Account Type:

[Data Origin Movement](#)

[Data Audit Trail](#)

SINGLE SELECT: PLEASE SELECT ACCOUNT

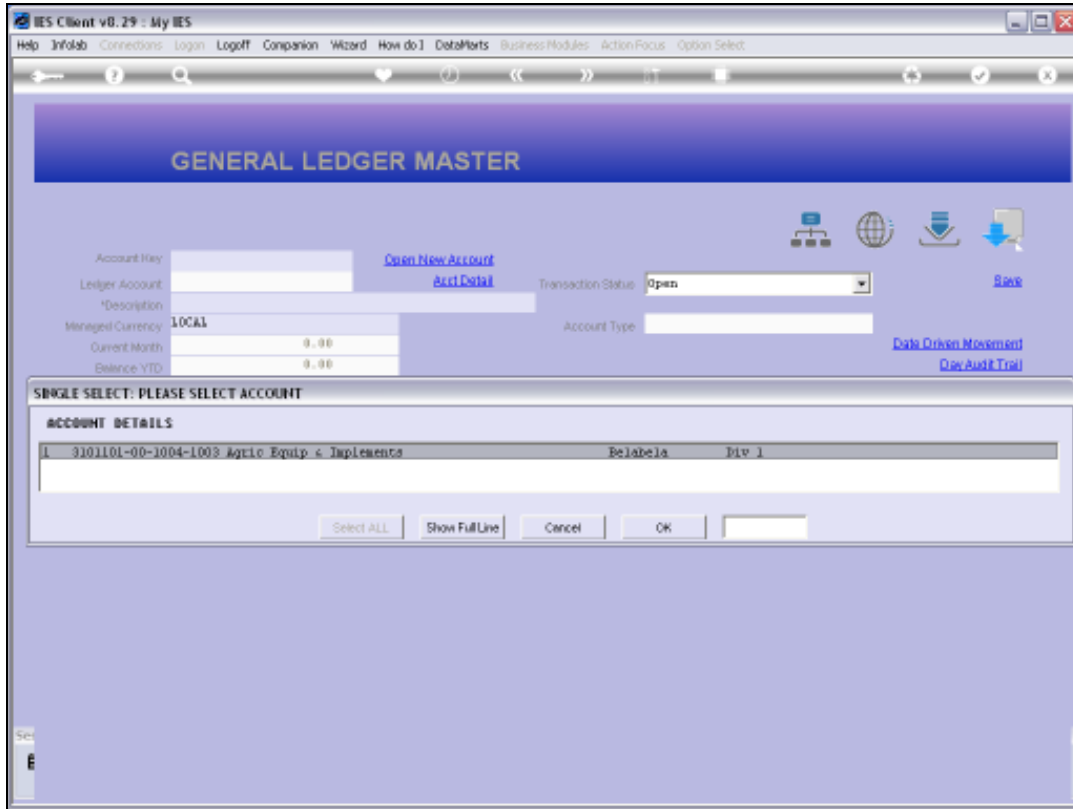
ACCOUNT DETAILS

1	3101101-00-1004-1003 Agric Equip & Implements	RelabeJa	Inv 1
---	---	----------	-------

Select ALL Show Full Line Cancel OK

Slide 6

Slide notes: As an example, we show this lookup value. The Account Number and Name on the left are always up to date, but the Names for the Sub Segments on the right are only updated when we choose to update the Lookup Names.



Slide 7
Slide notes: