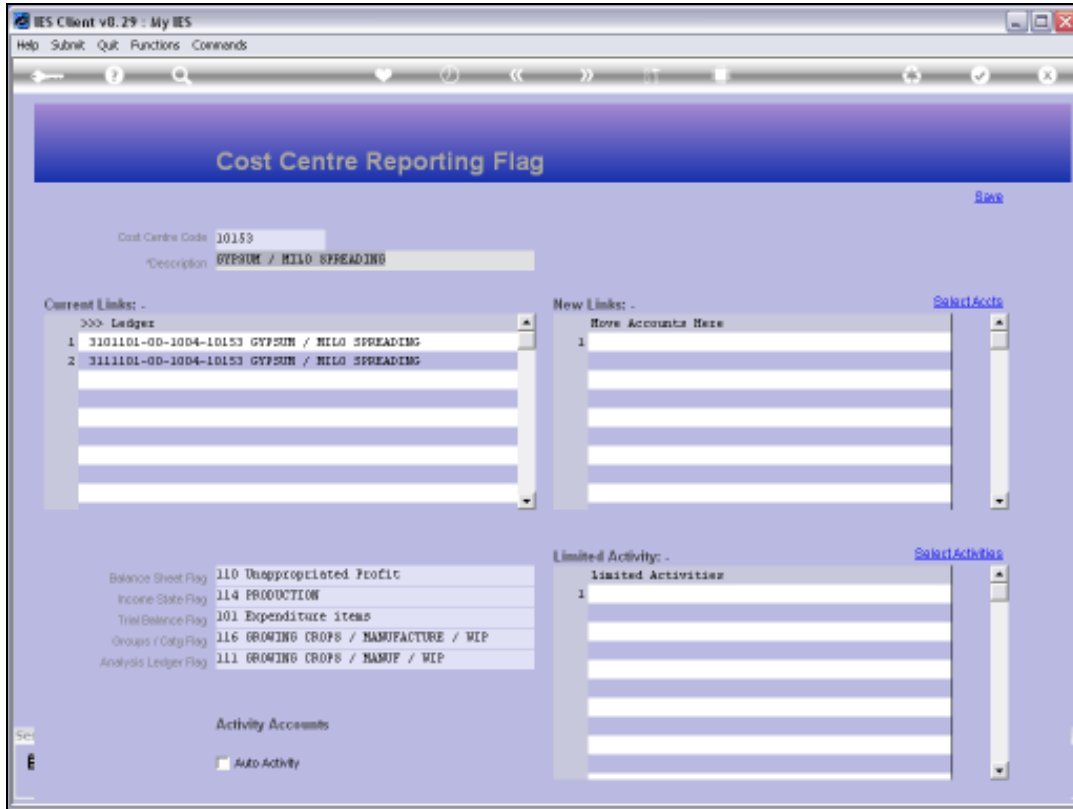
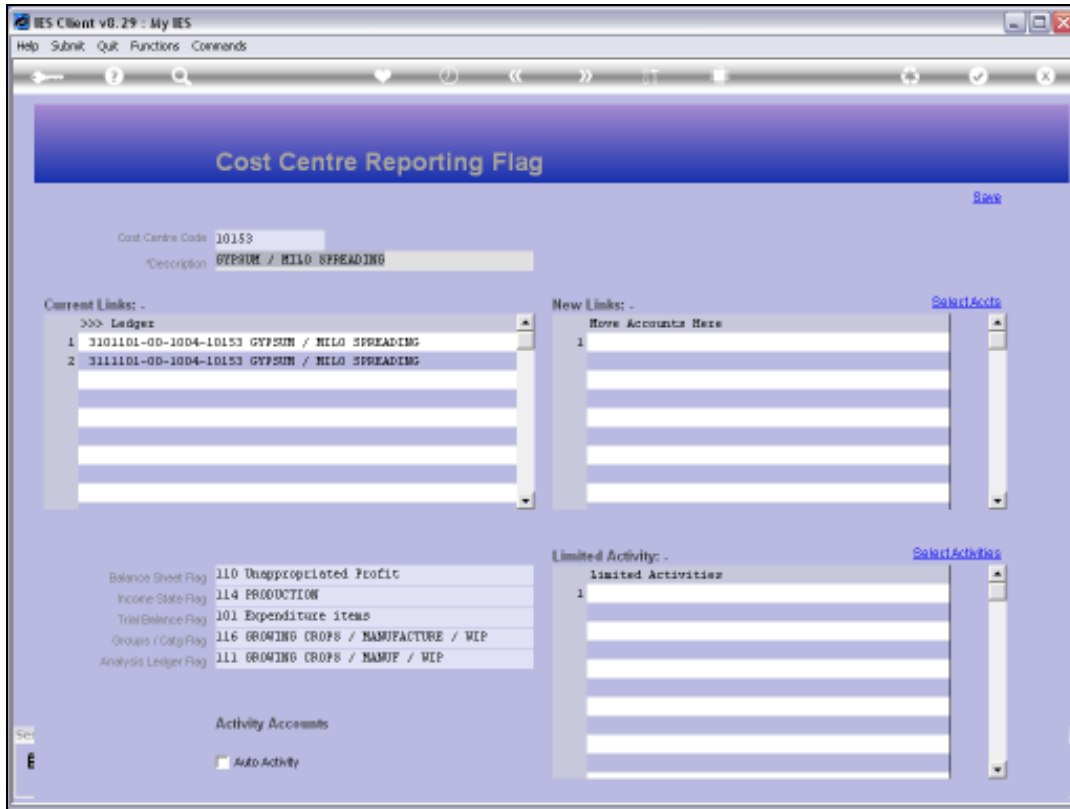


## Slide 1

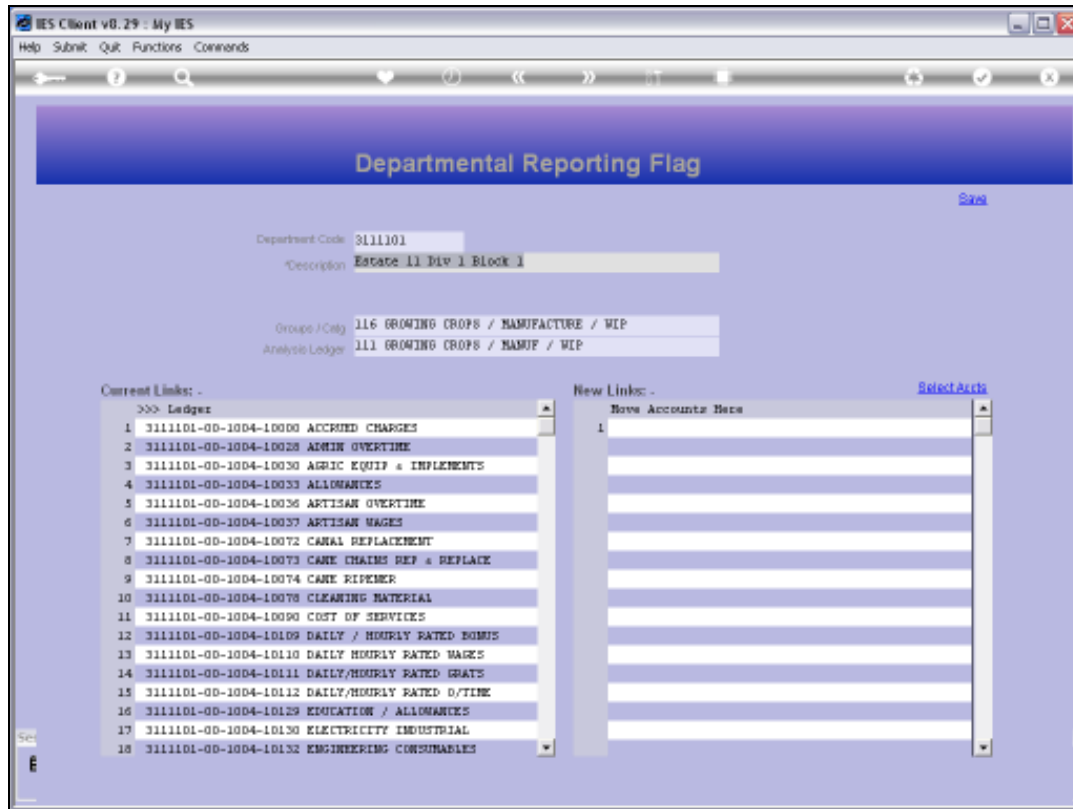
Slide notes: On the Cost Centre Flags, we have the option to provide defaults for any of: BSPOS, ISPOS, TRIALBPOS, OTHER1POS and OTHER2POS. If we list any of these default Flags, as shown in this example, then the Chart wizard can force these settings to automatically be in compliance on all Accounts with this Cost Centre.



Slide 2  
Slide notes:

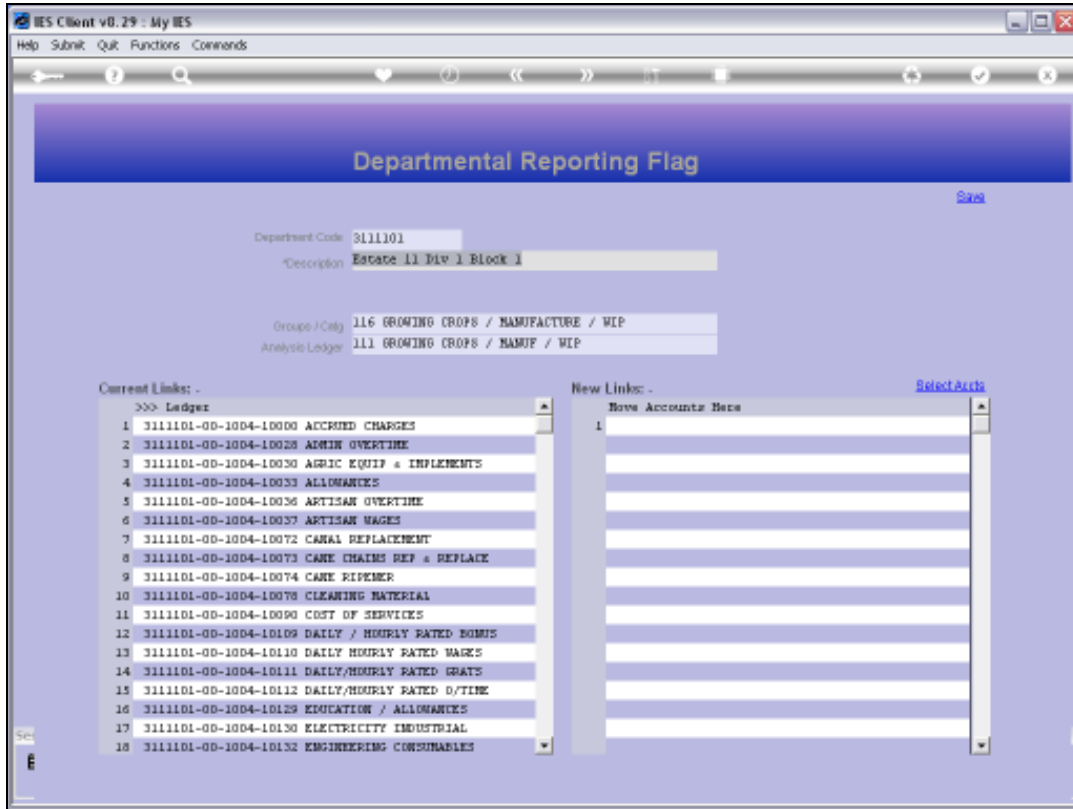


Slide 3  
Slide notes:

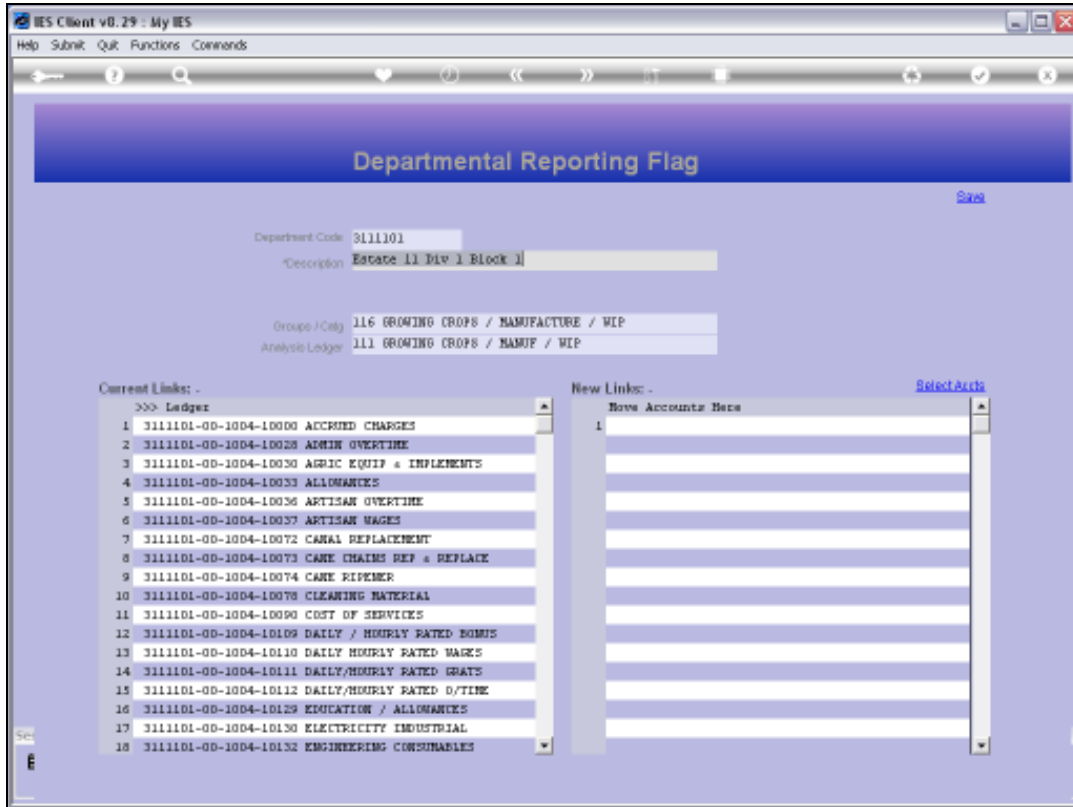


## Slide 4

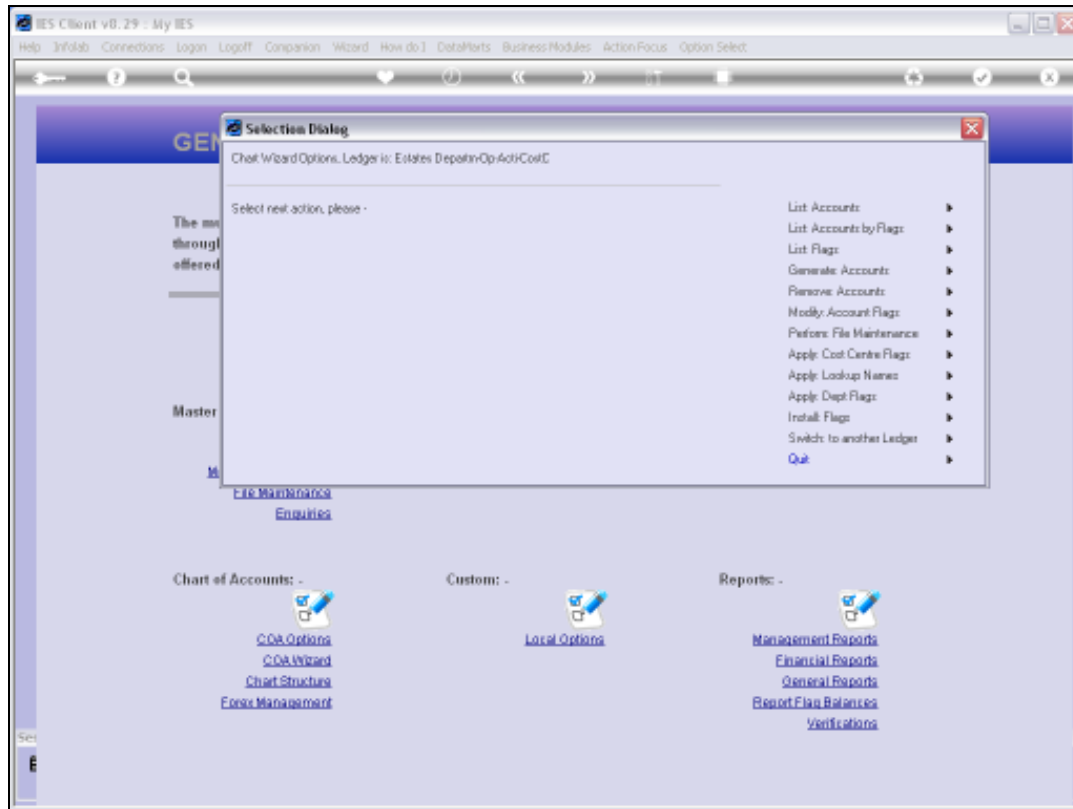
Slide notes: For 2 of the same Flags, e.g. Groups and Analysis, we may also specify it on the Department master. Depending on the Chart design, there are cases when it is convenient for some Departments to force these 2 Flags from the Department. When the Chart wizard updates Cost Centre Flags, then it will in the 1st instance update according to Flags as set on the Cost Centre, but then if these 2 Flags are also set on the Department in the case of any Account and the Department it belongs to, then the Flags set on the Department will take preference.



Slide 5  
Slide notes:



Slide 6  
Slide notes:



## Slide 7

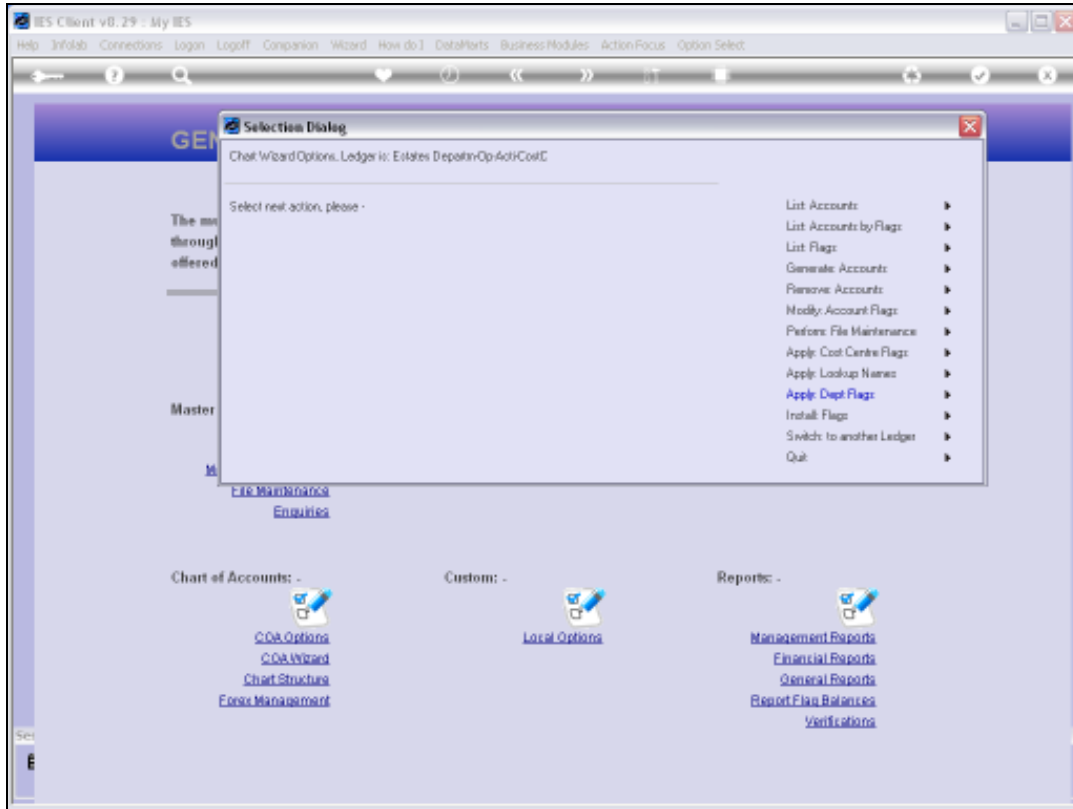
Slide notes: With the Chart wizard, when we attempt the option to apply Department flags, we are only told to use the Cost Centre option.



Slide 8

Slide notes: The Cost Centre and Department flags are done with the same option, and Department flags cannot be done by itself.





Slide 9  
Slide notes: