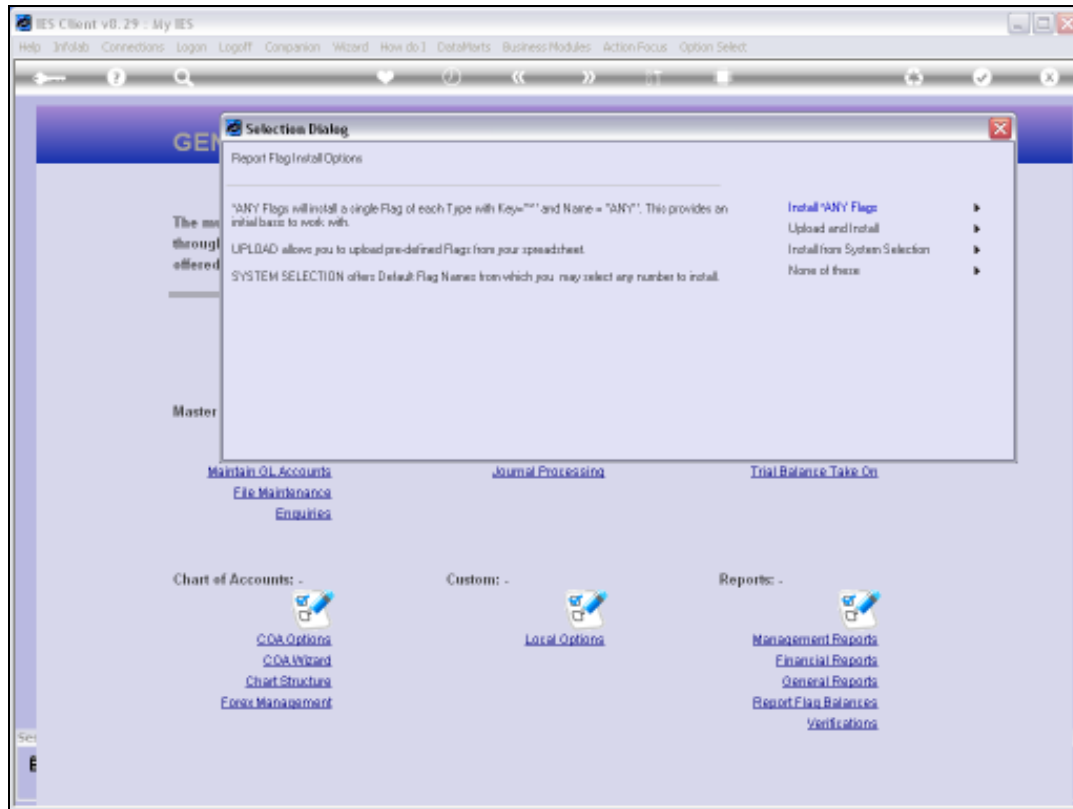


## Slide 1

Slide notes: One of the Flag Install options is for 'basis Flags'. What are these? The basis Flags are temporary Flags that we can use in the meantime, to generate Accounts, and then to apply the detail Flags at a later stage. Because we must have some Flags to use when we generate Accounts, but it may not suit us to do the Flags first, then we can use basis Flags instead, for the time being.



## Slide 2

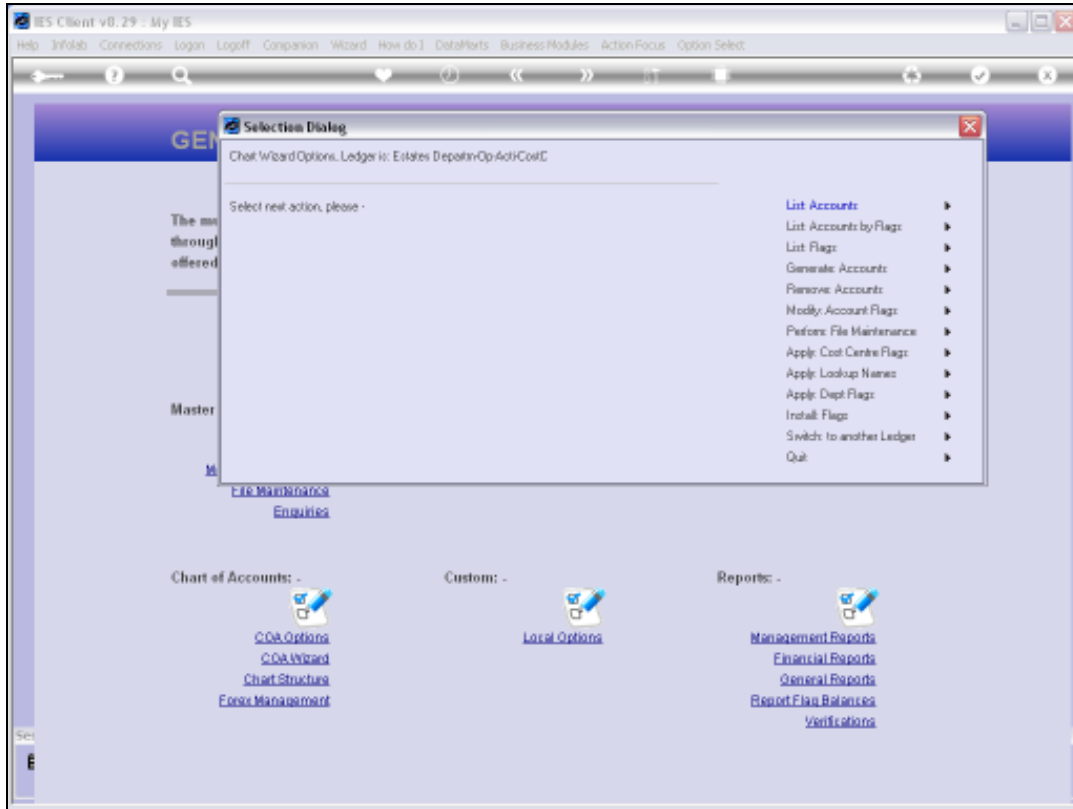
Slide notes: The basis Flags option will create 1 Flag of each type, except for Departments, with a Key of star and a name of 'ANY'.



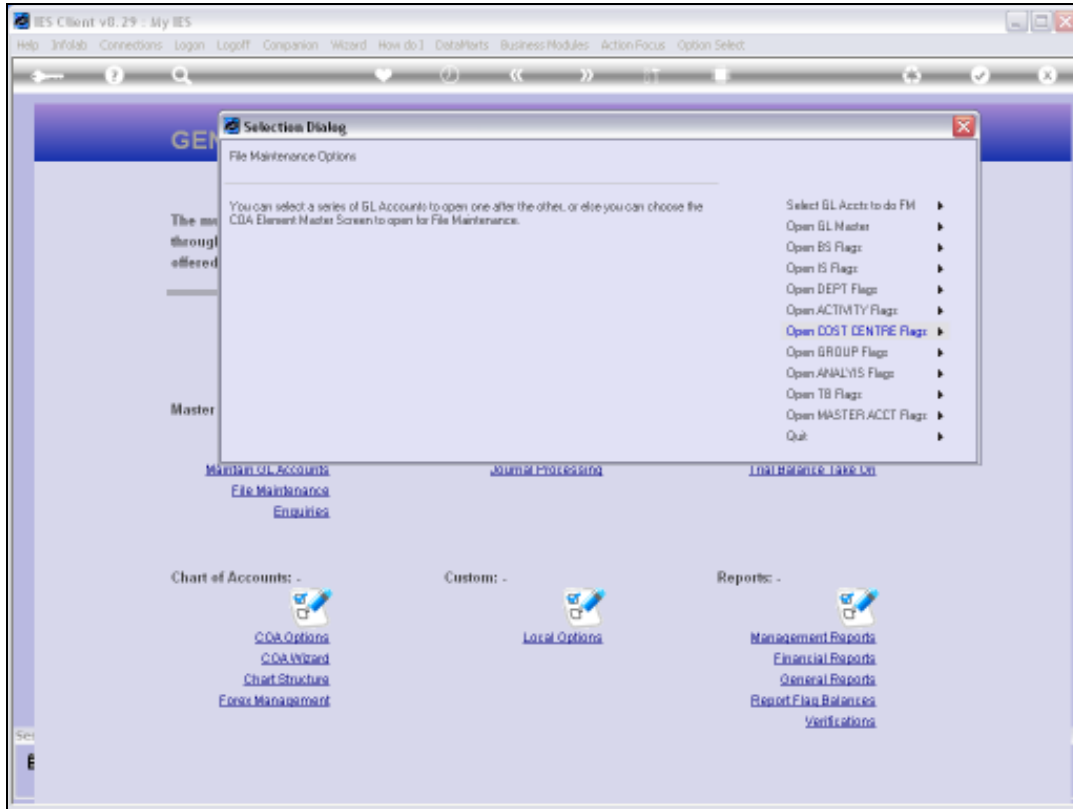
Slide 3  
Slide notes:



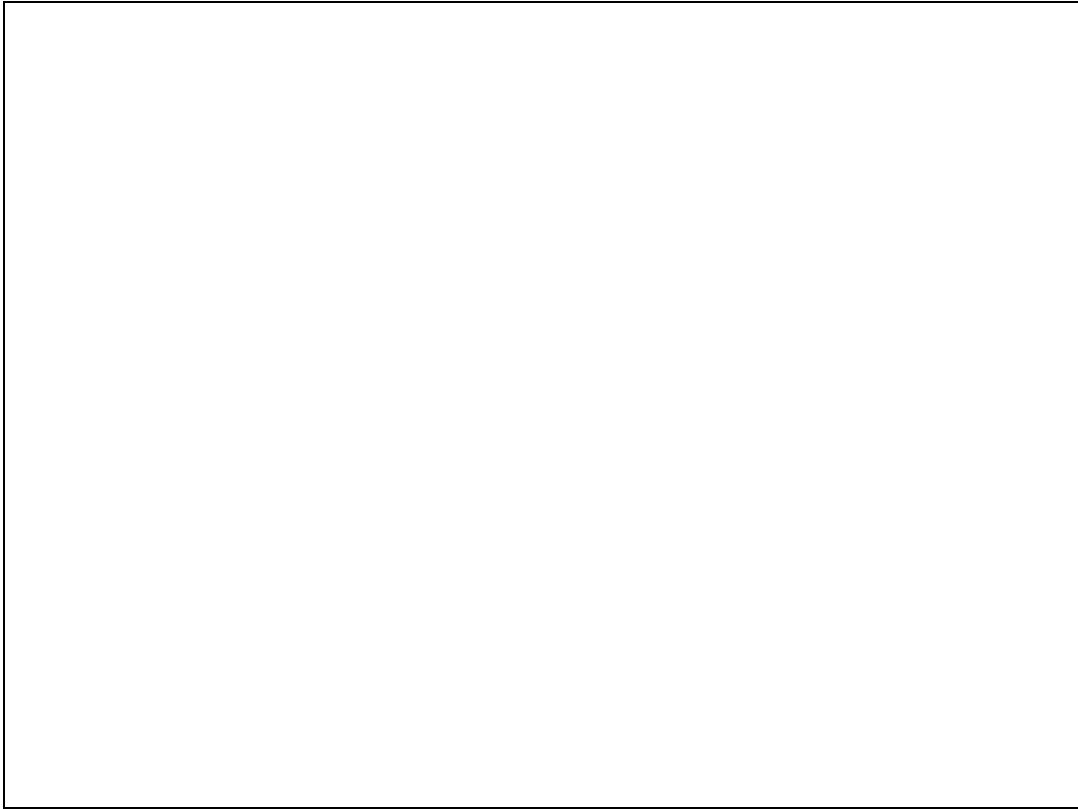
Slide 4  
Slide notes:



Slide 5  
Slide notes:

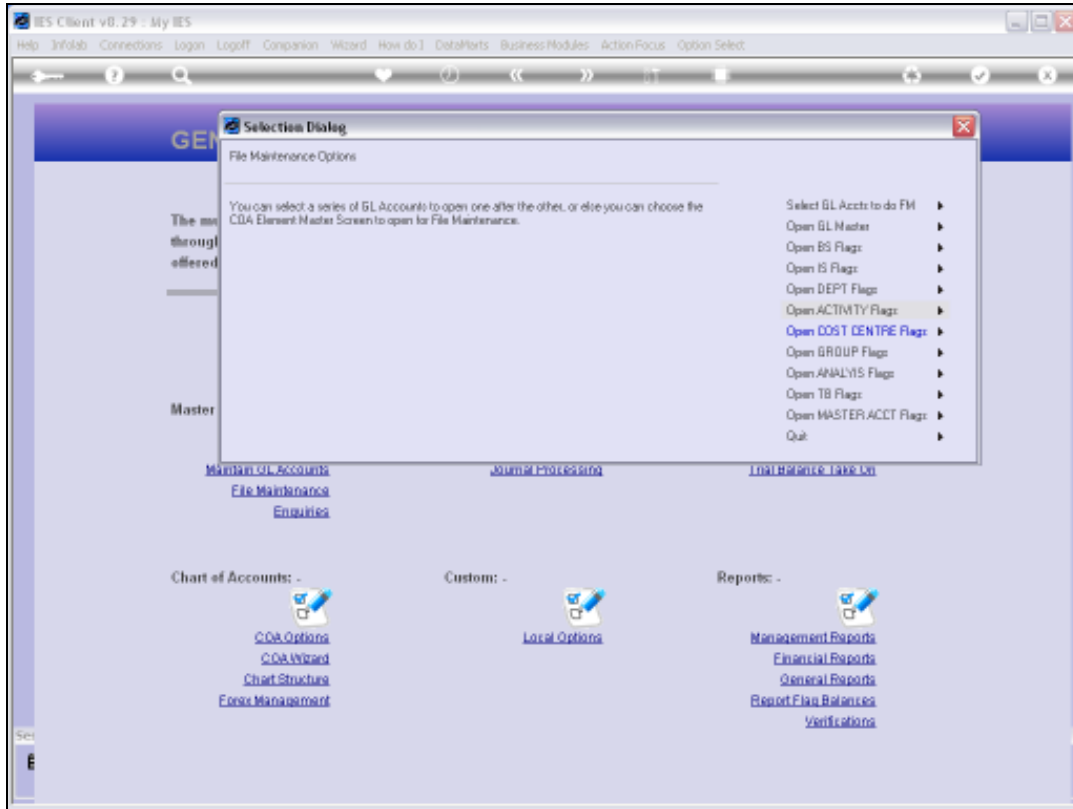


Slide 6  
Slide notes:



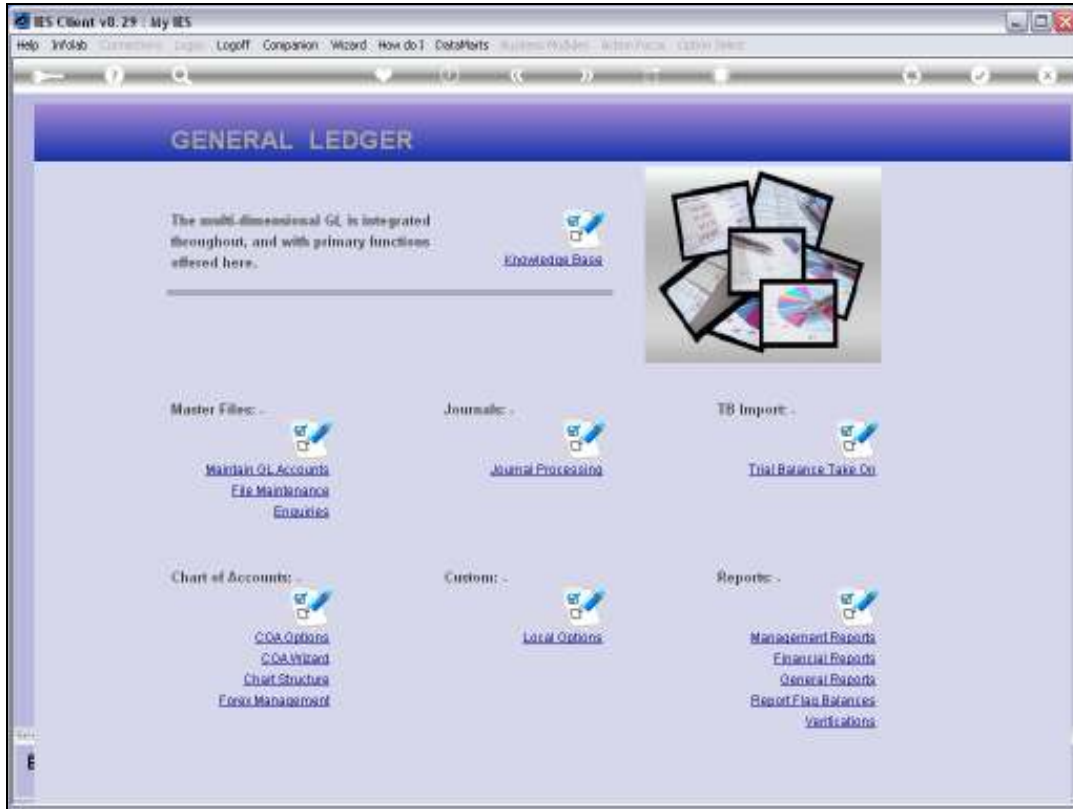
Slide 7

Slide notes:



Slide 8  
Slide notes:





Slide 9  
Slide notes:



Slide 10

Slide notes:



Slide 11

Slide notes: As an example, we can see here that a BSPOS Flag has been created, and the same applies for the other types. We may delete these basis Flags at a later stage if we want to.