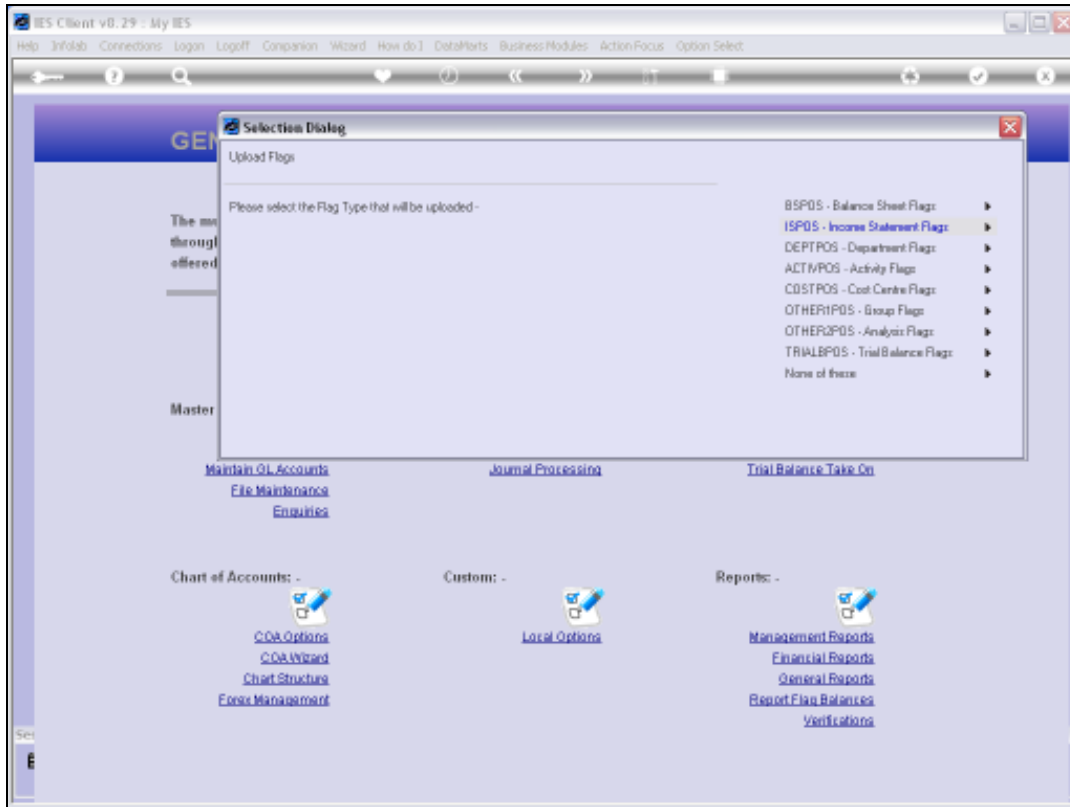


Slide 1

Slide notes: We need Report Flags for our Chart. One of the available options is to upload our own custom designed Report Flags.



Slide 2
Slide notes:



Slide 3

Slide notes: Any of the Report Flag types can be uploaded. In this example, we will choose the BSPOS Balance Sheet Flags.



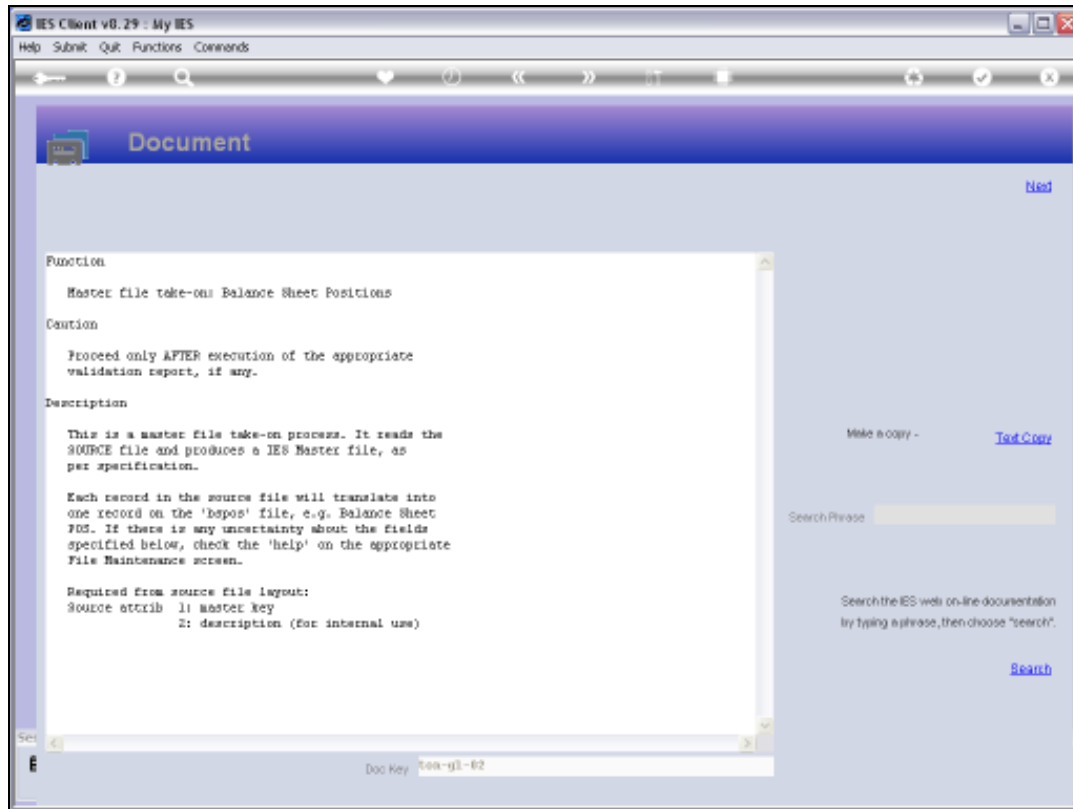
Slide 4
Slide notes:



Slide 5
Slide notes:

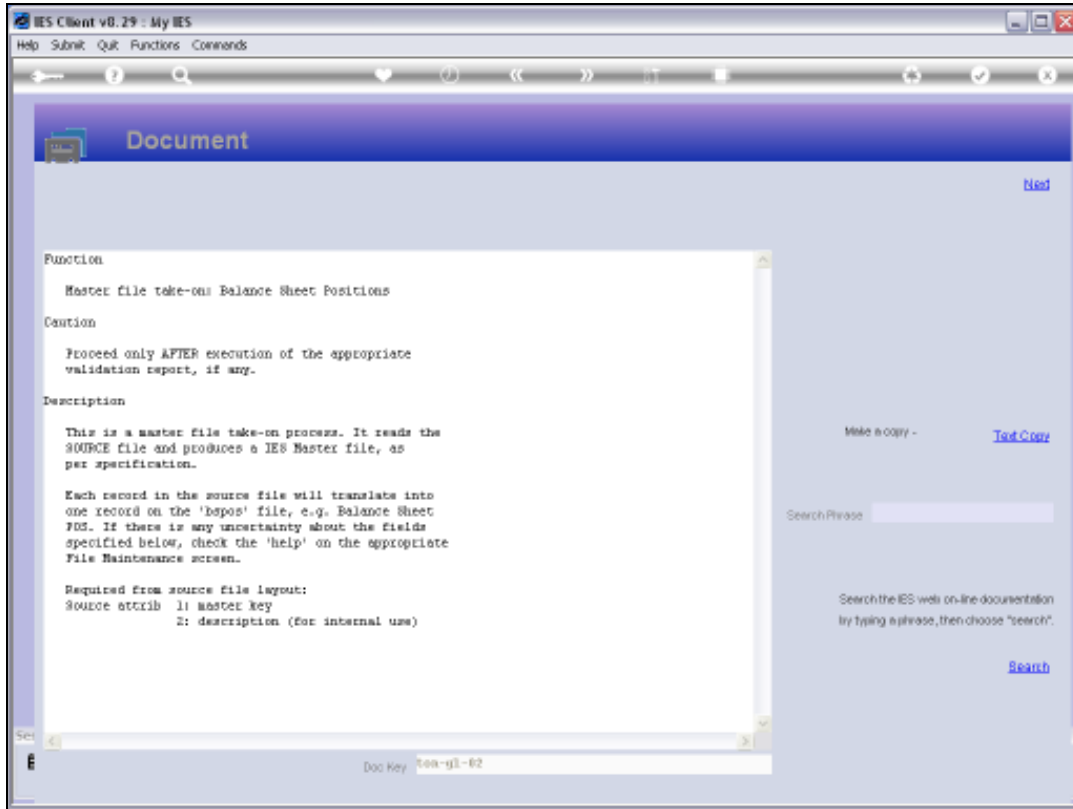


Slide 6
Slide notes:

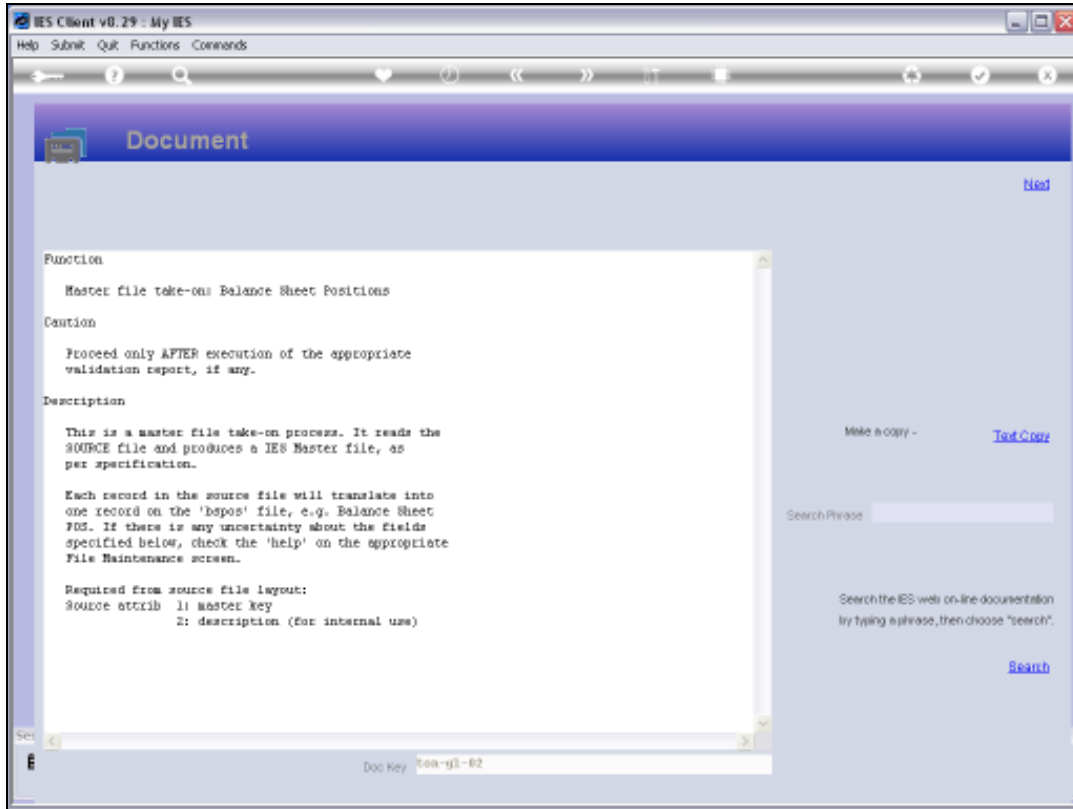


Slide 7

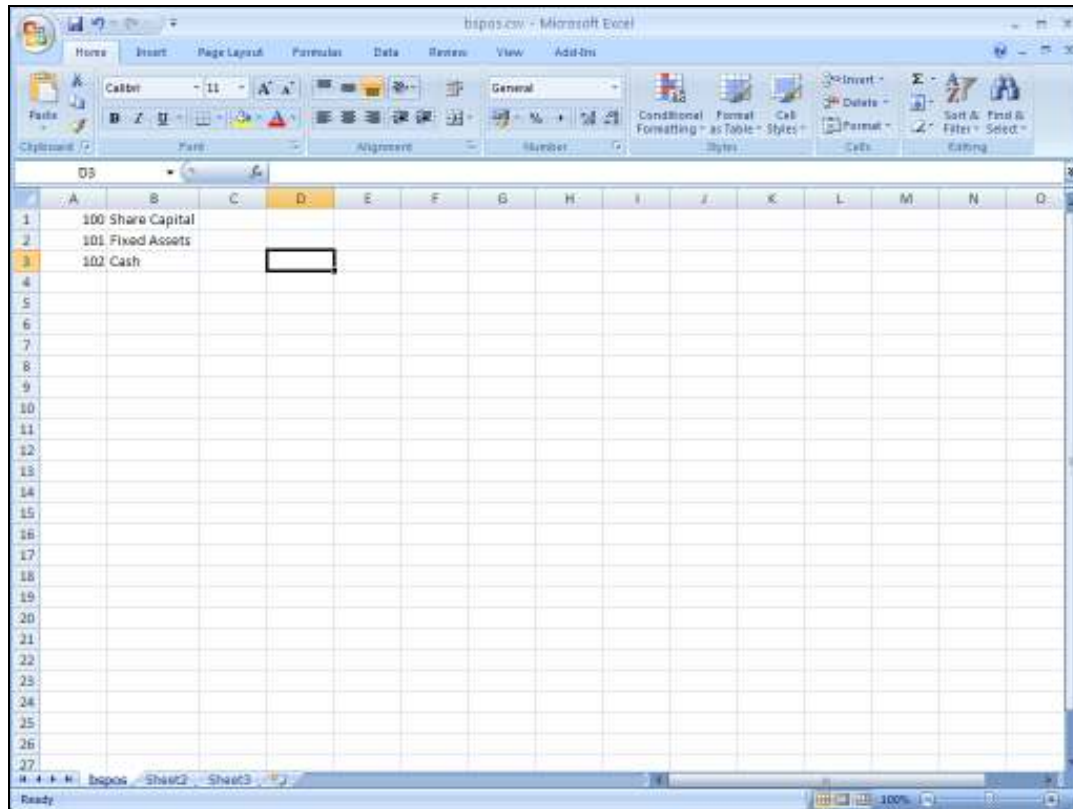
Slide notes: The Data View will reveal what is required from our spreadsheet data, and in fact we need only a Key and a Name for each BSPOS Flag that we want to upload.



Slide 8
Slide notes:

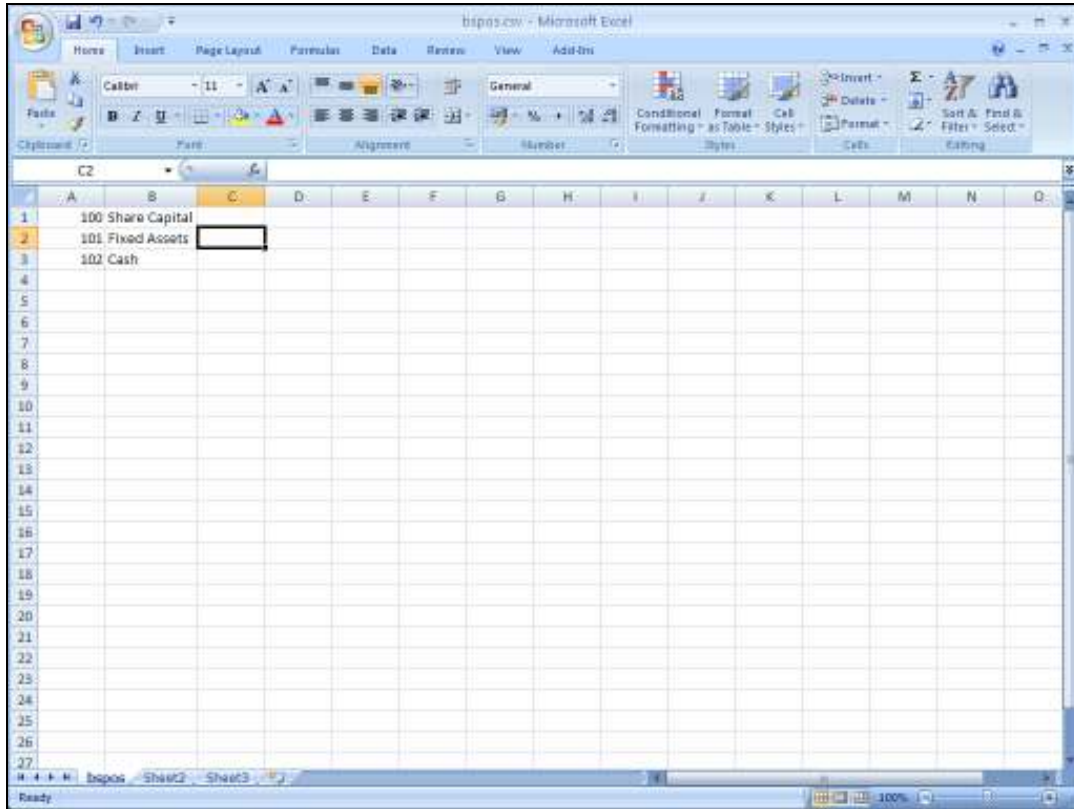


Slide 9
Slide notes:



Slide 10

Slide notes: So this is our example in the spreadsheet. We will upload 3 Flags in this exercise. Of course, the spreadsheet will be saved as a CSV and placed on the Bridge Folder. If we are not yet familiar with this process, then it is recommended to see the tutorial entitled 'Principles for Data Uploads'.

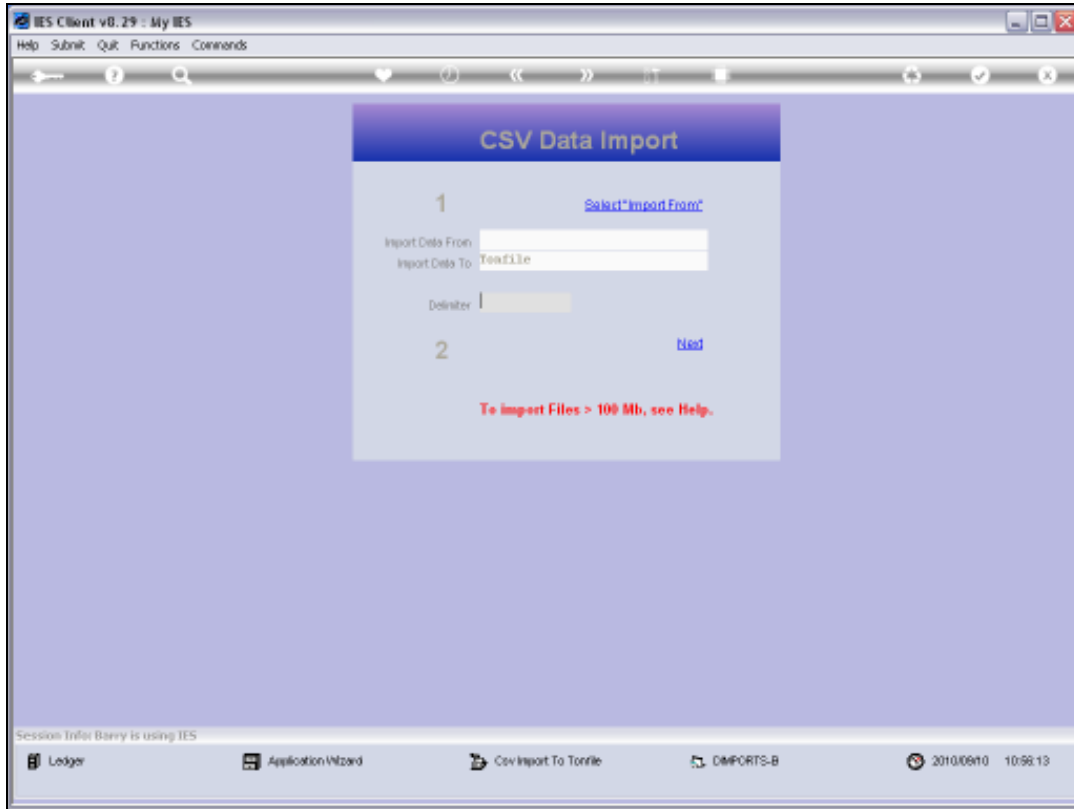


Slide 11
Slide notes:



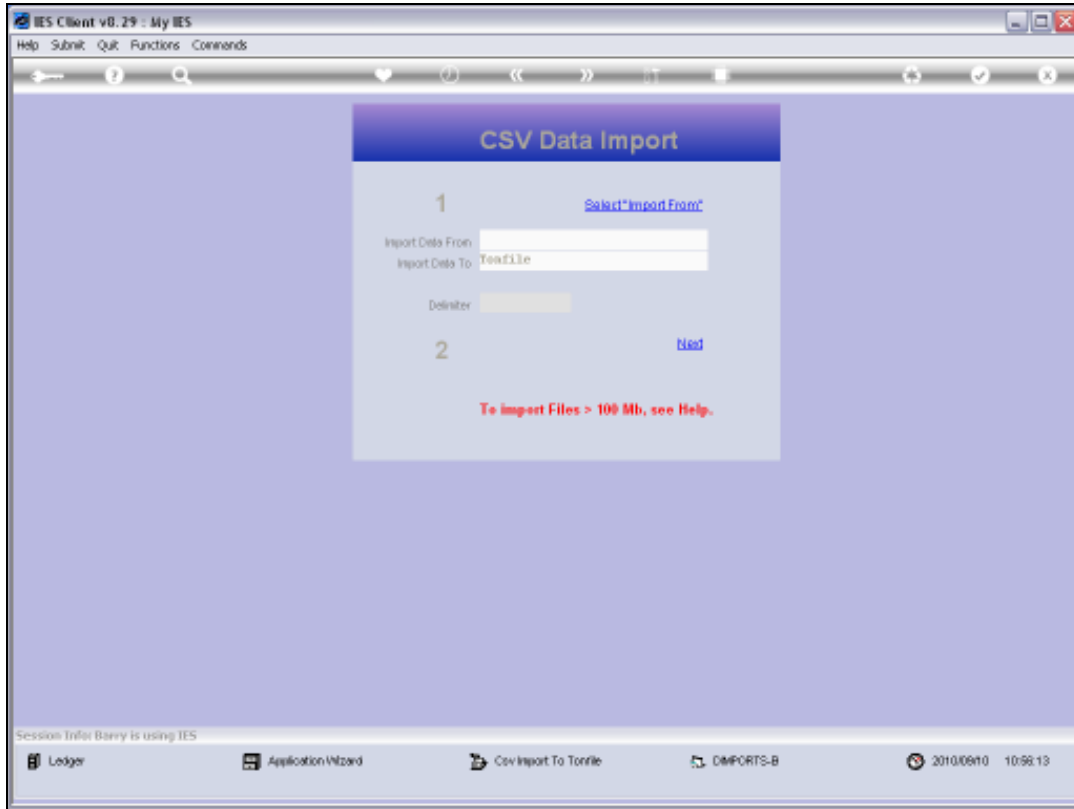
Slide 12

Slide notes:



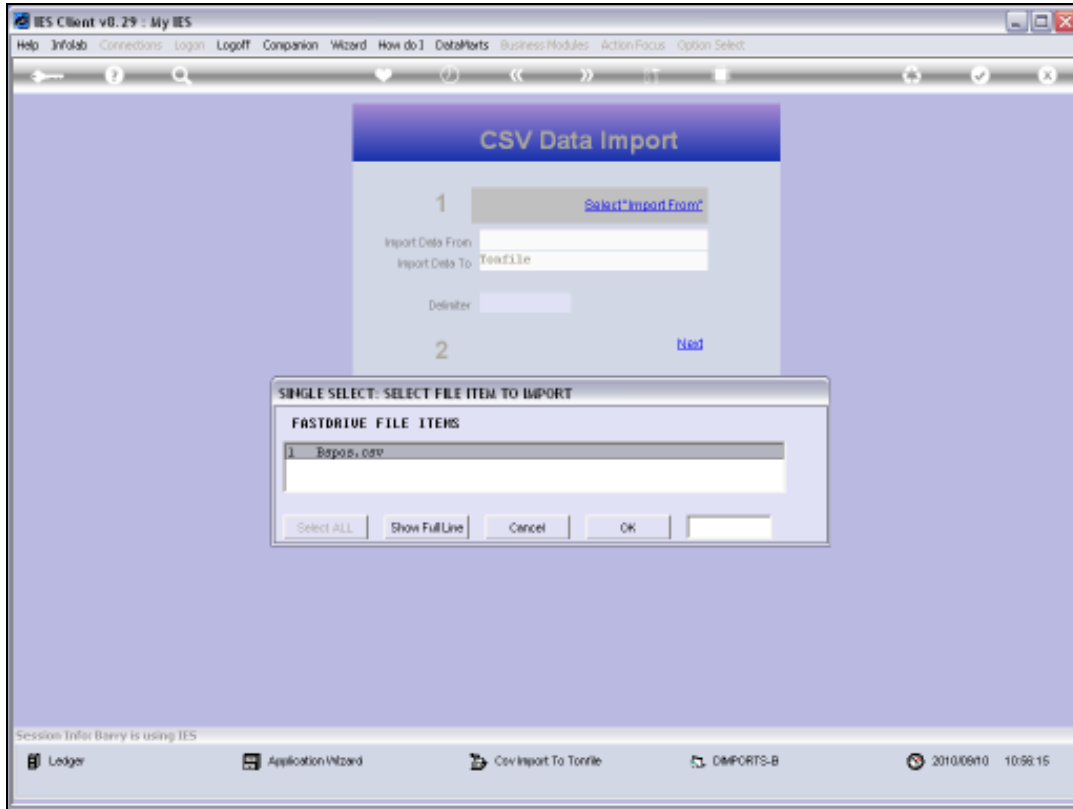
Slide 13

Slide notes:



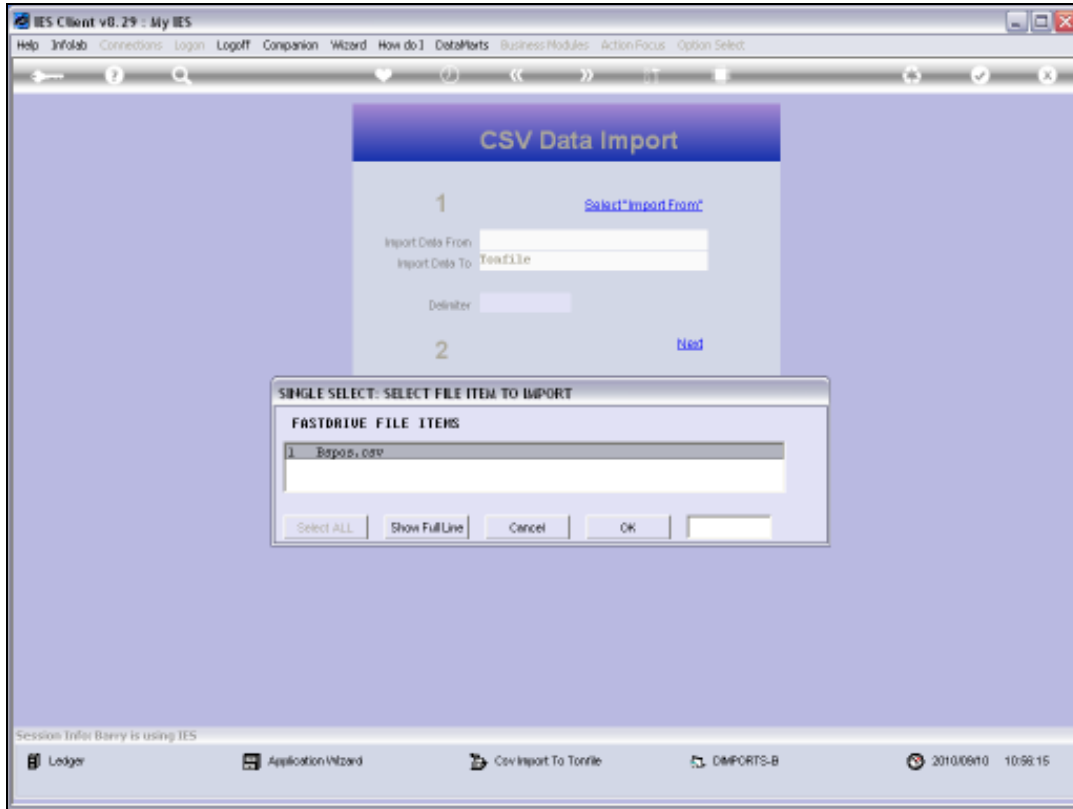
Slide 14

Slide notes:



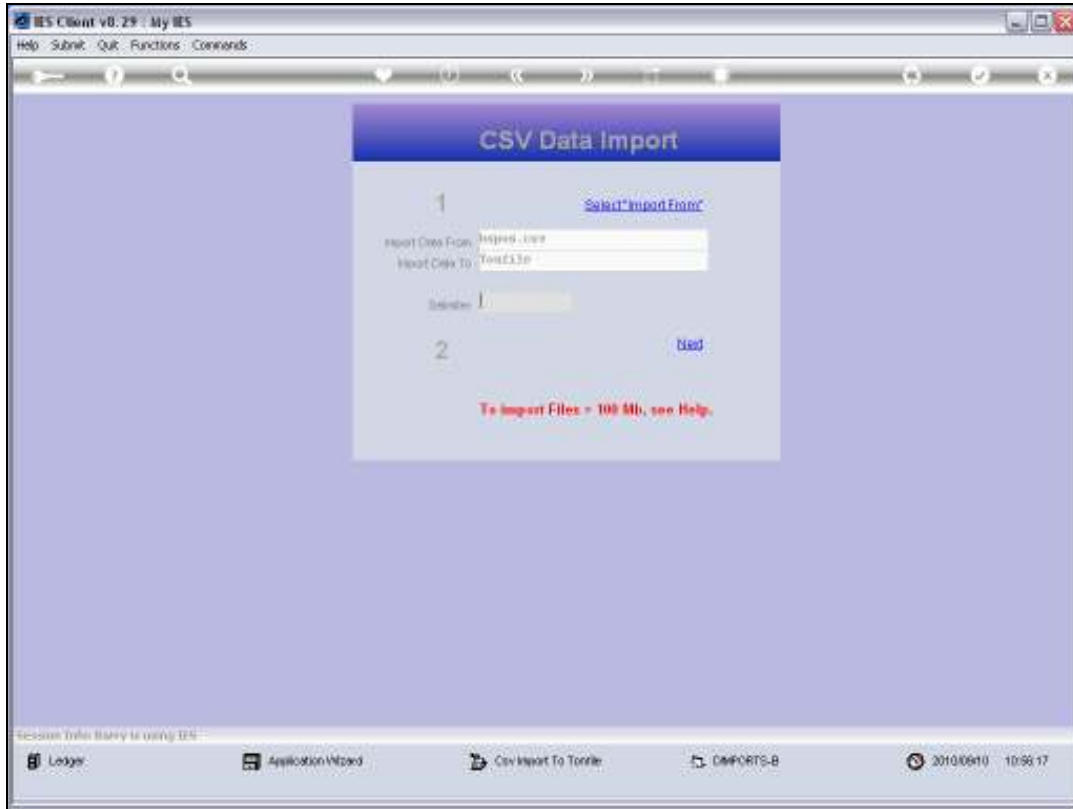
Slide 15

Slide notes:



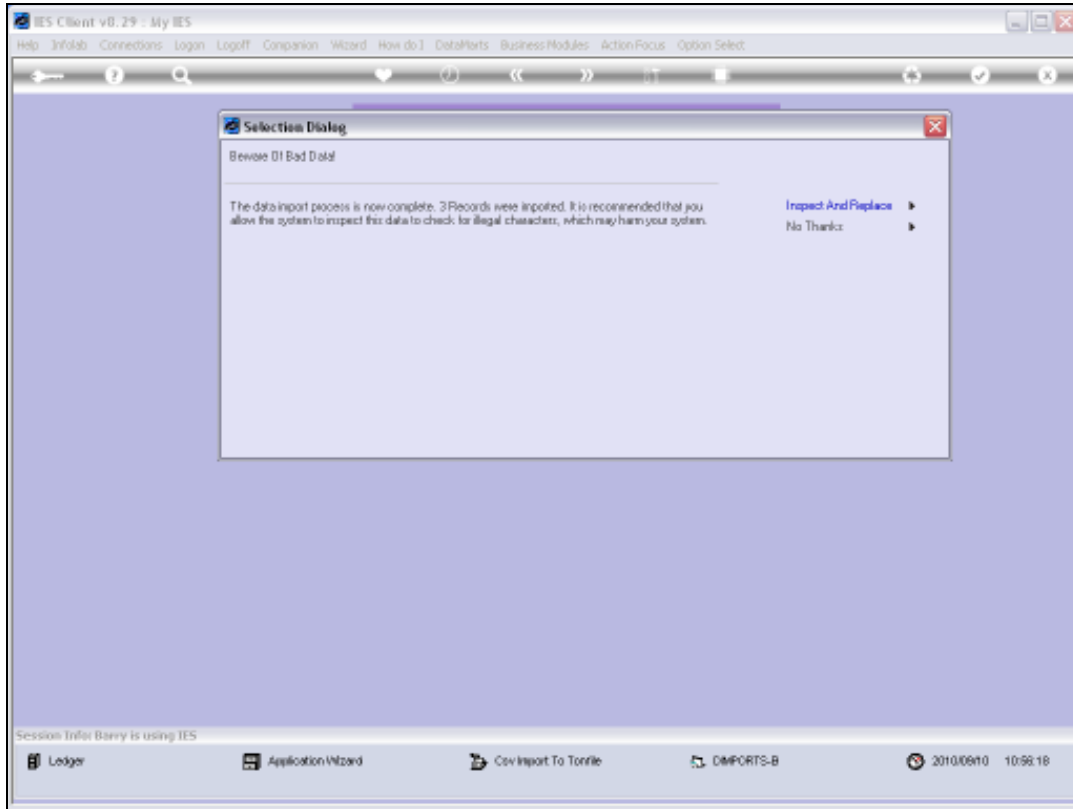
Slide 16

Slide notes:



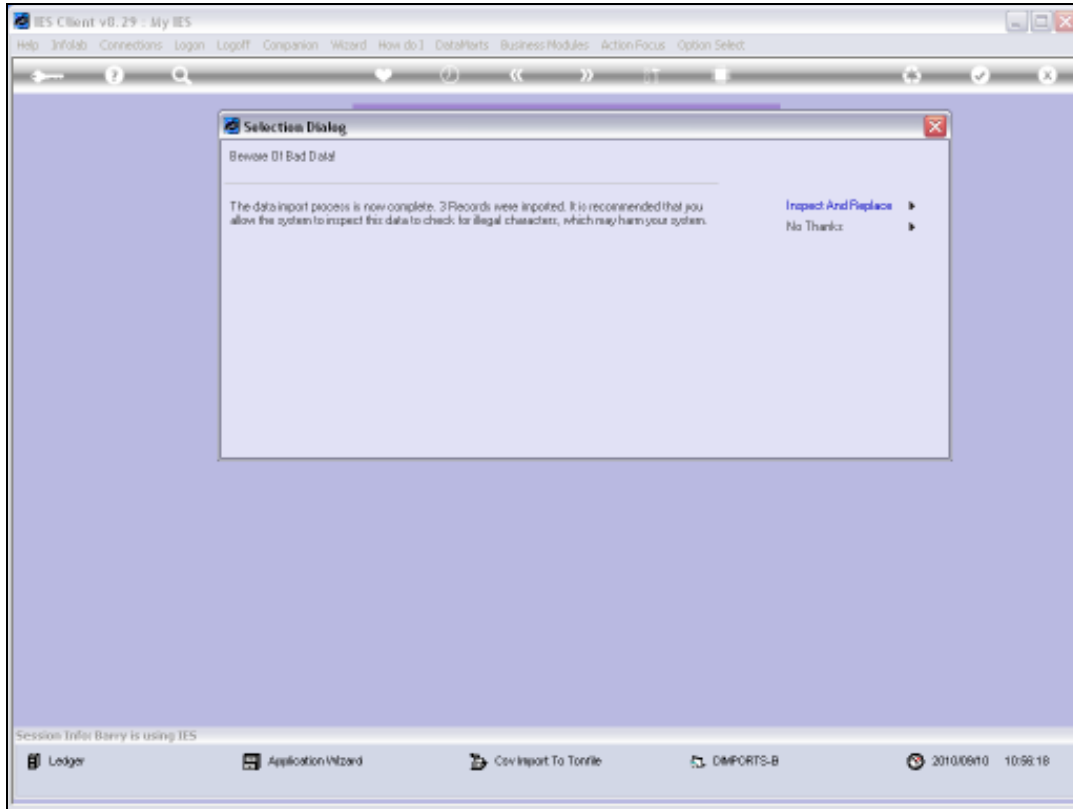
Slide 17

Slide notes:



Slide 18

Slide notes:



Slide 19
Slide notes:



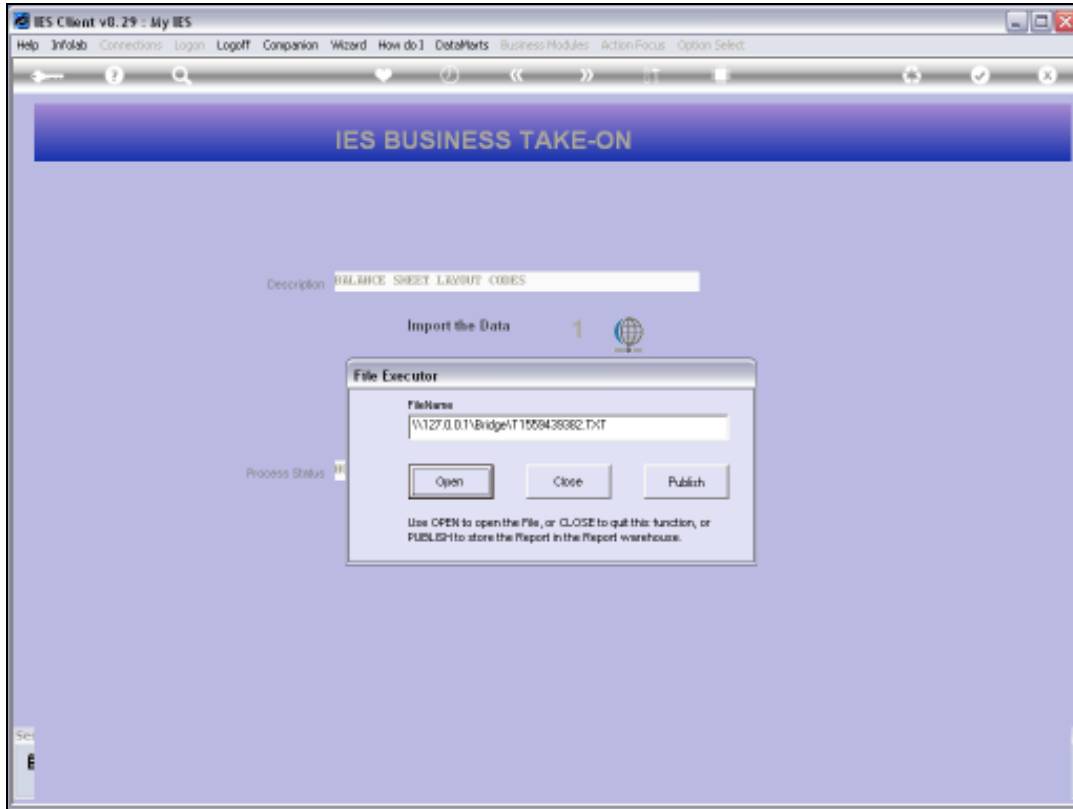
Slide 20

Slide notes:



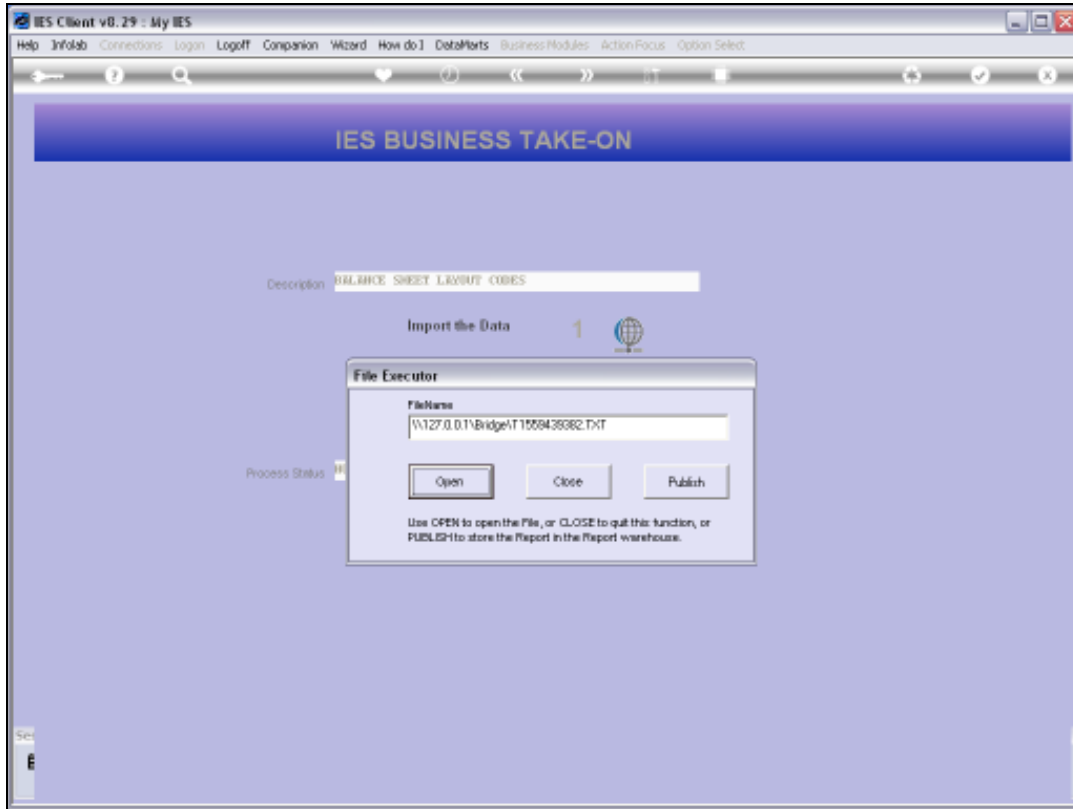
Slide 21

Slide notes:



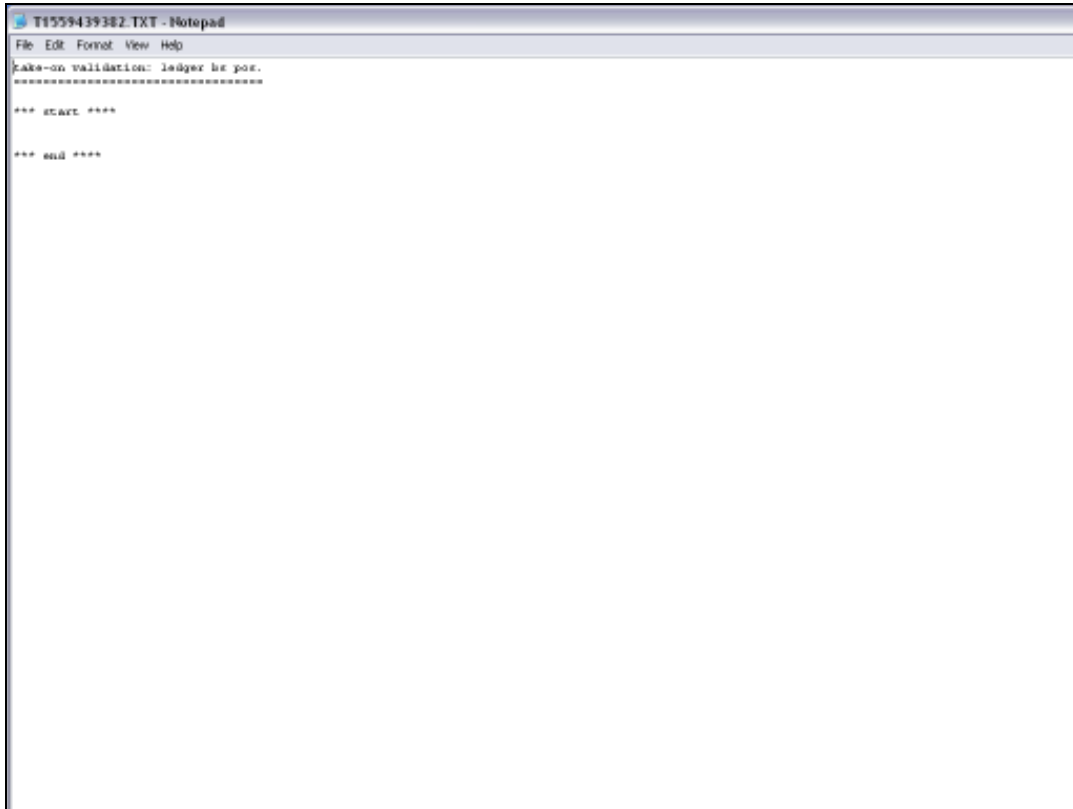
Slide 22

Slide notes:



Slide 23

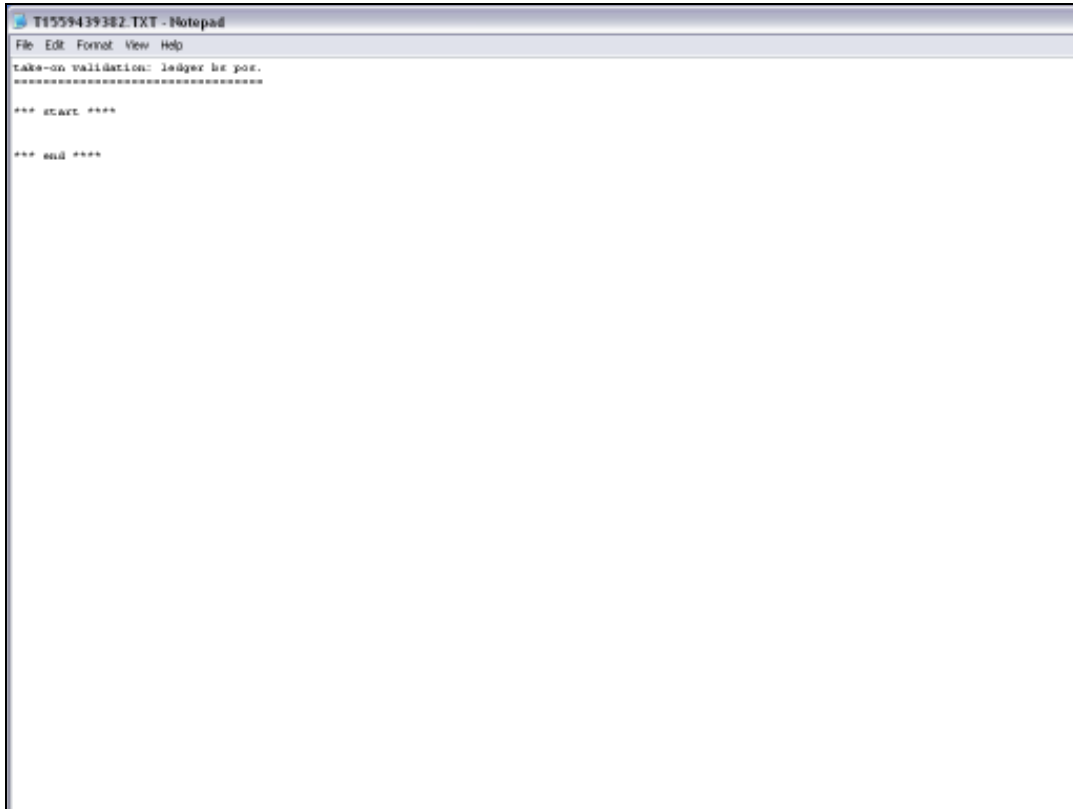
Slide notes:



```
T1559439382.TXT - Notepad
File Edit Format View Help
Eaks-on validation: ledger by pos.
*****
*** start ***
*** end ***
```

Slide 24

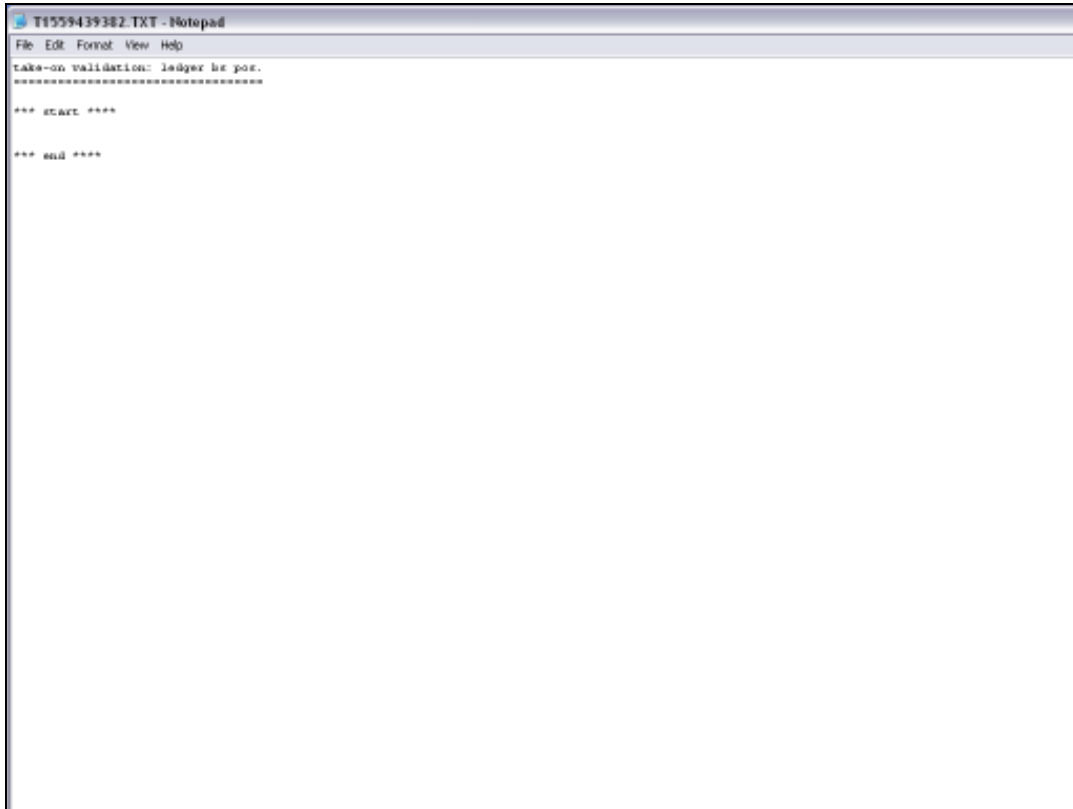
Slide notes:



```
T1559439382.TXT - Notepad
File Edit Format View Help
take-on validation: ledger by pos.
*****
*** start ***
*** end ***
```

Slide 25

Slide notes: There are no errors, so the data lines are valid.



```
T1559439382.TXT - Notepad
File Edit Format View Help
take-no validation: ledger by pos.
=====
*** start ***
*** end ***
```

Slide 26

Slide notes:



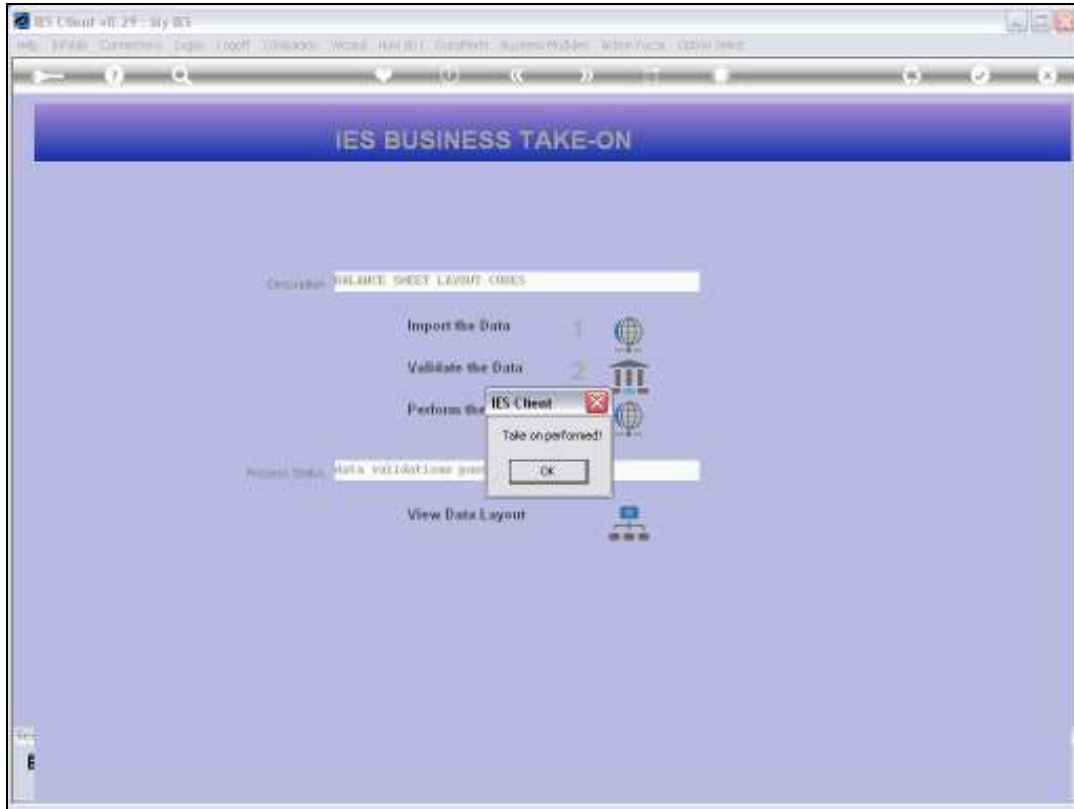
Slide 27

Slide notes:



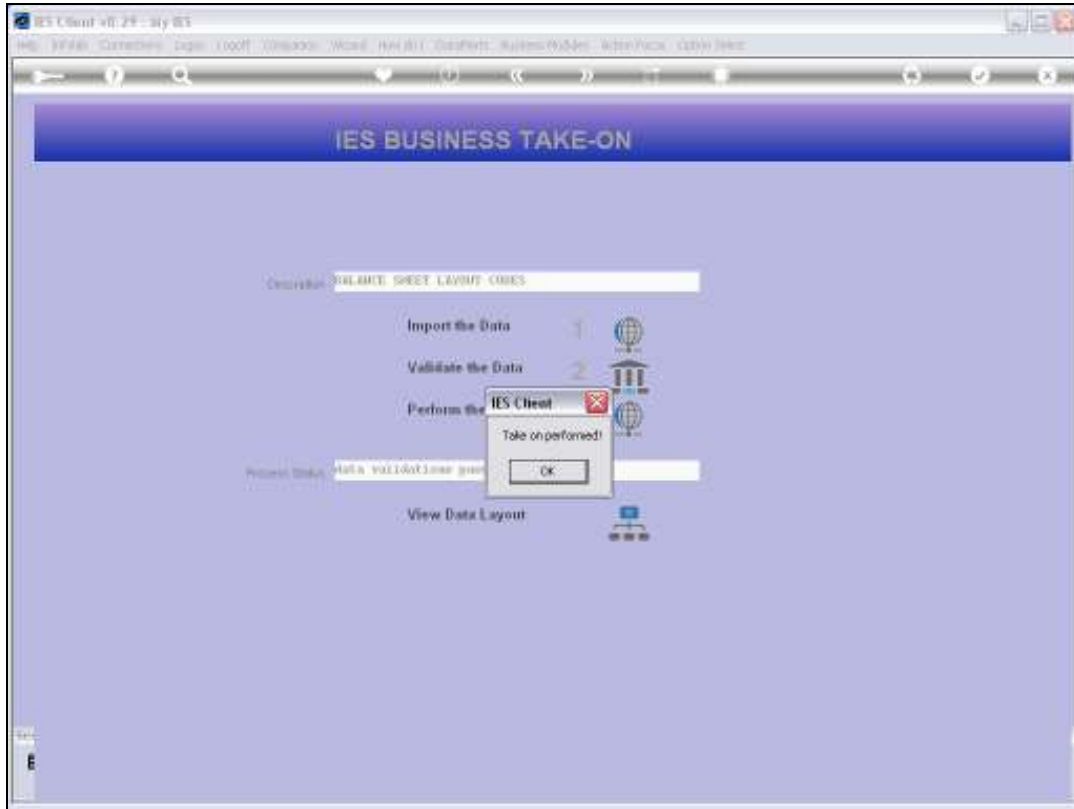
Slide 28

Slide notes:



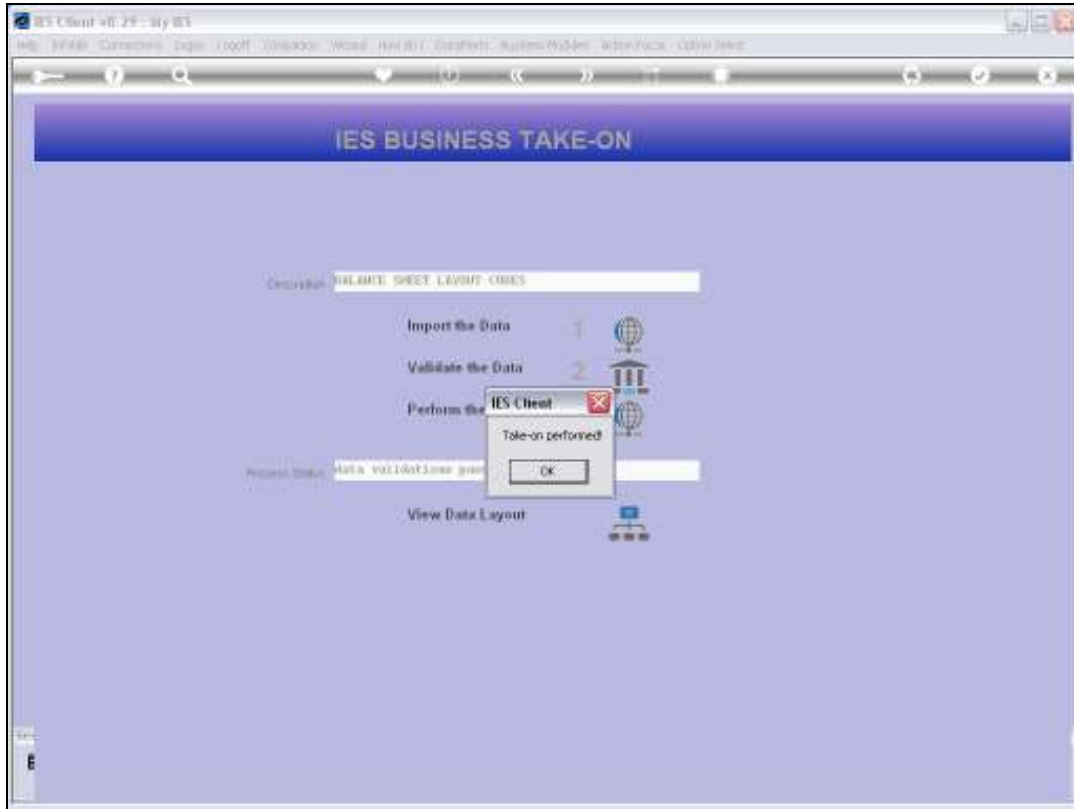
Slide 29

Slide notes:



Slide 30

Slide notes:



Slide 31

Slide notes:

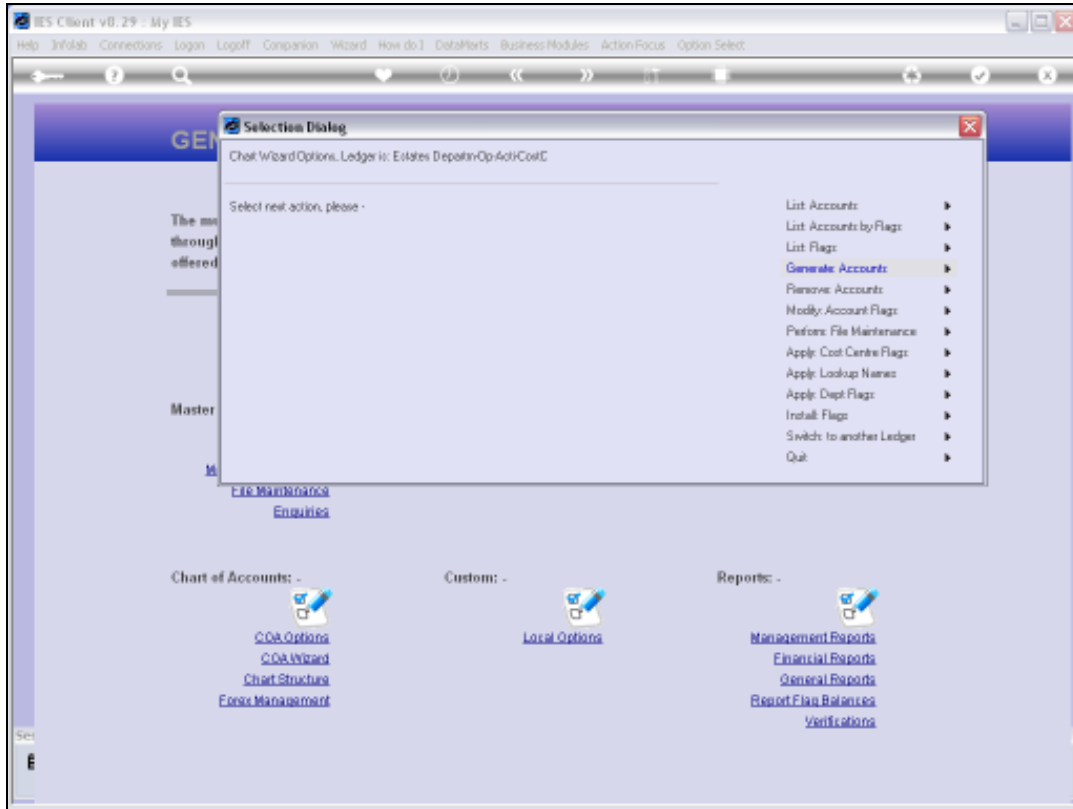


Slide 32
Slide notes:

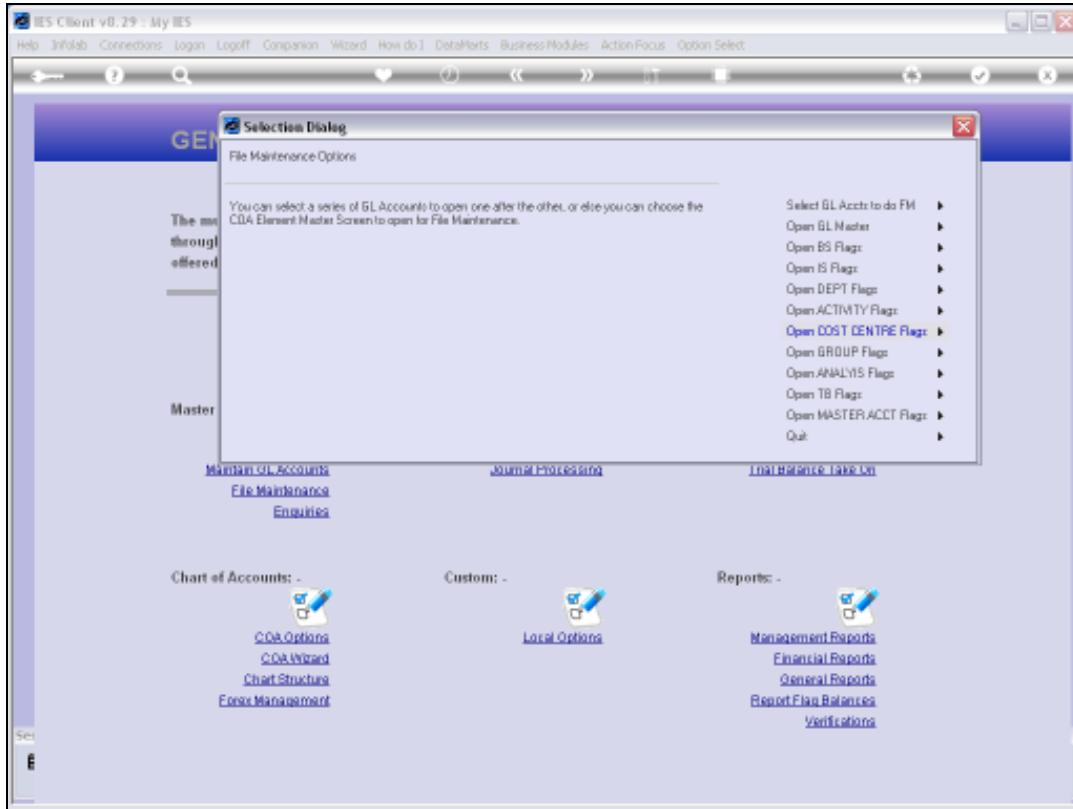


Slide 33

Slide notes: The upload is complete. We will now just use the File Maintenance option on BSPOS to show that the Flags are indeed present.



Slide 34
Slide notes:

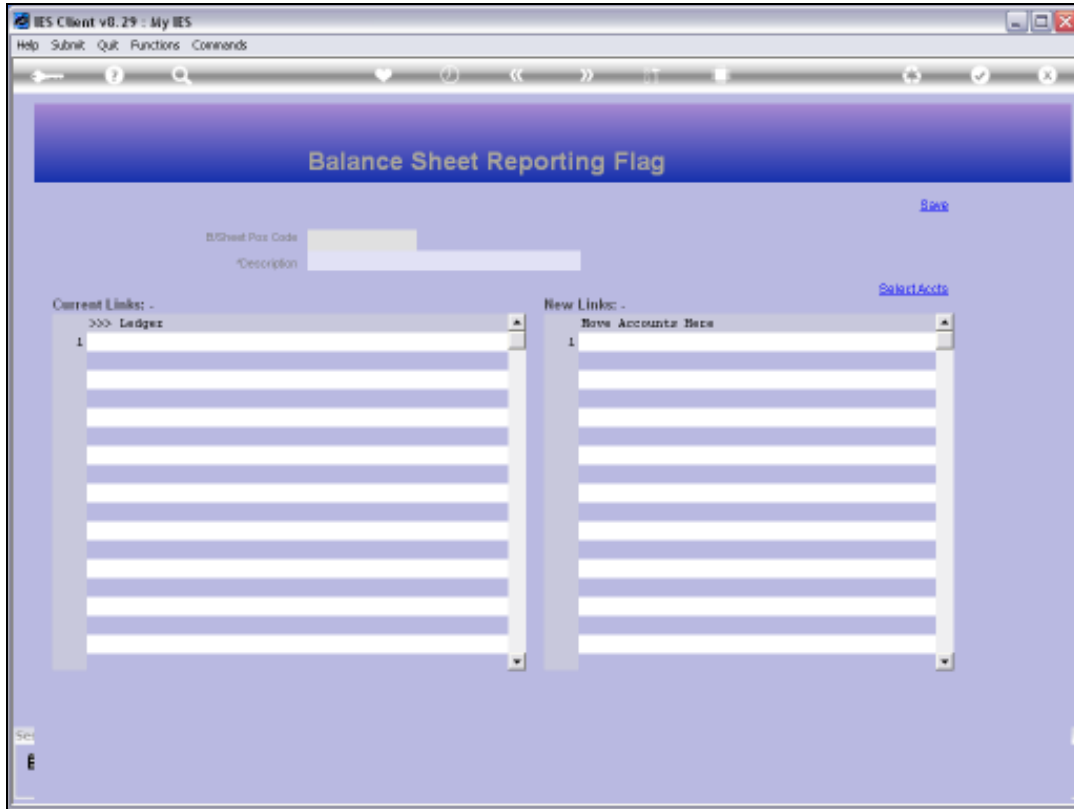


Slide 35
Slide notes:



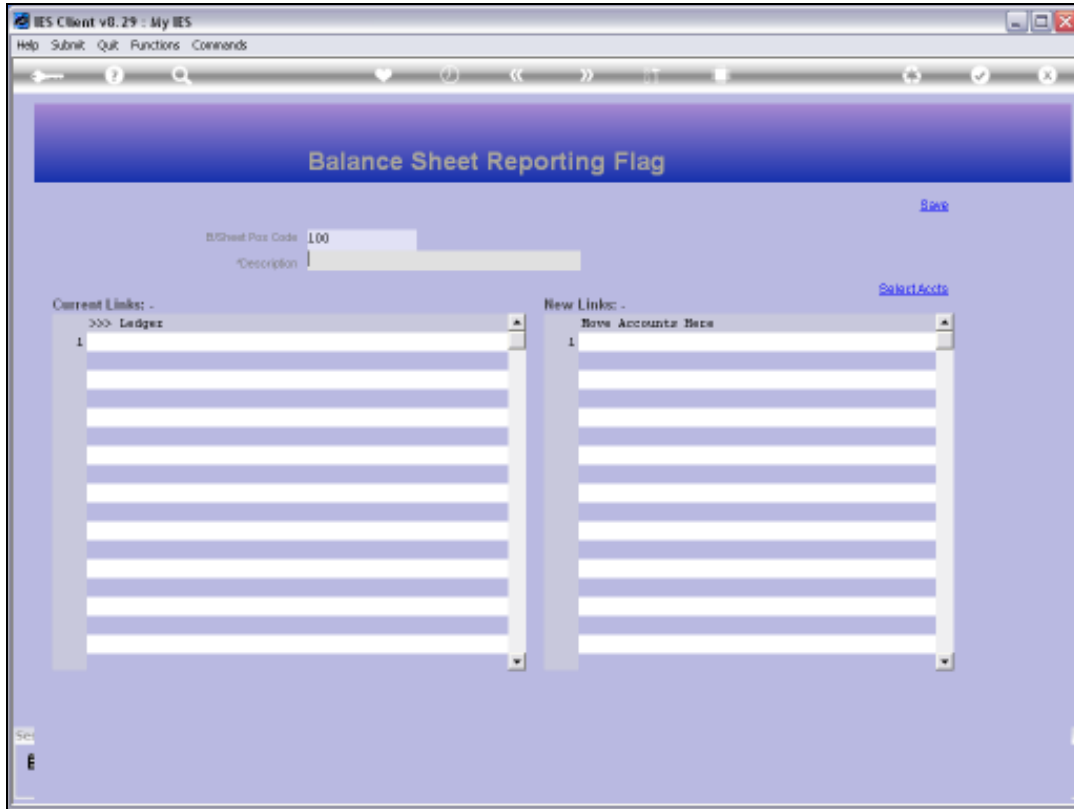
Slide 36

Slide notes:



Slide 37

Slide notes:



Slide 38

Slide notes:



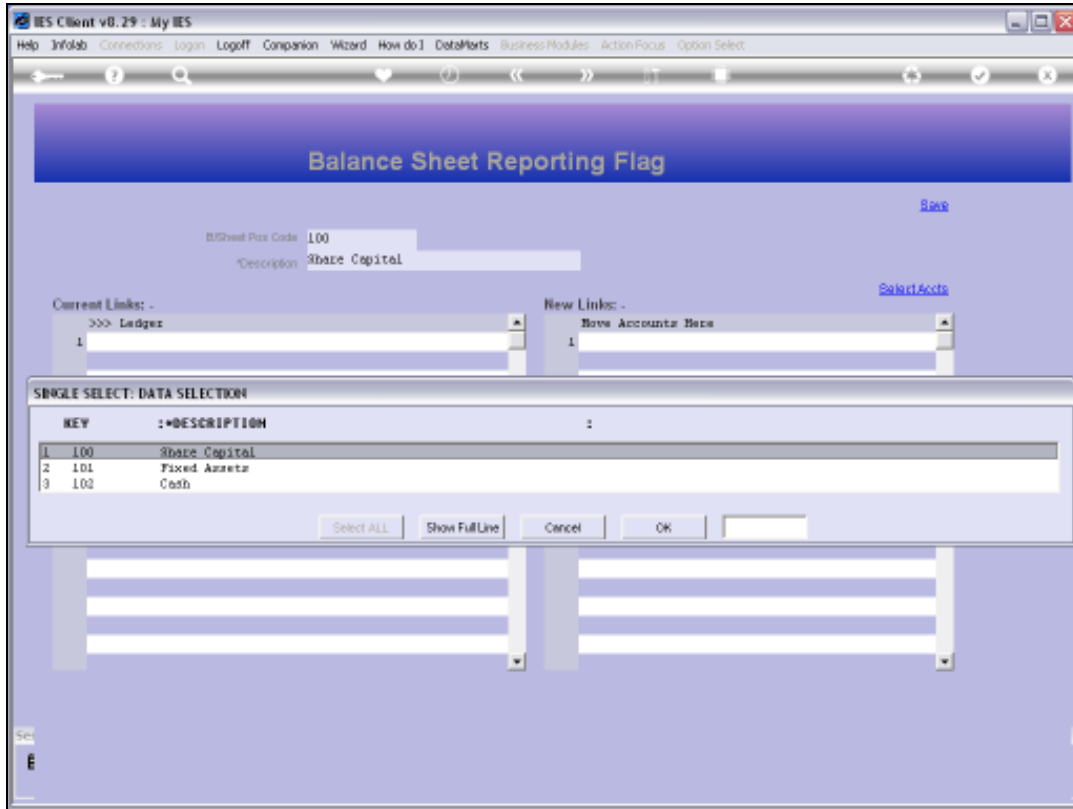
Slide 39

Slide notes:



Slide 40

Slide notes:



Slide 41

Slide notes: The Lookup reveals that all 3 Flags that we have uploaded are here.



Slide 42

Slide notes: