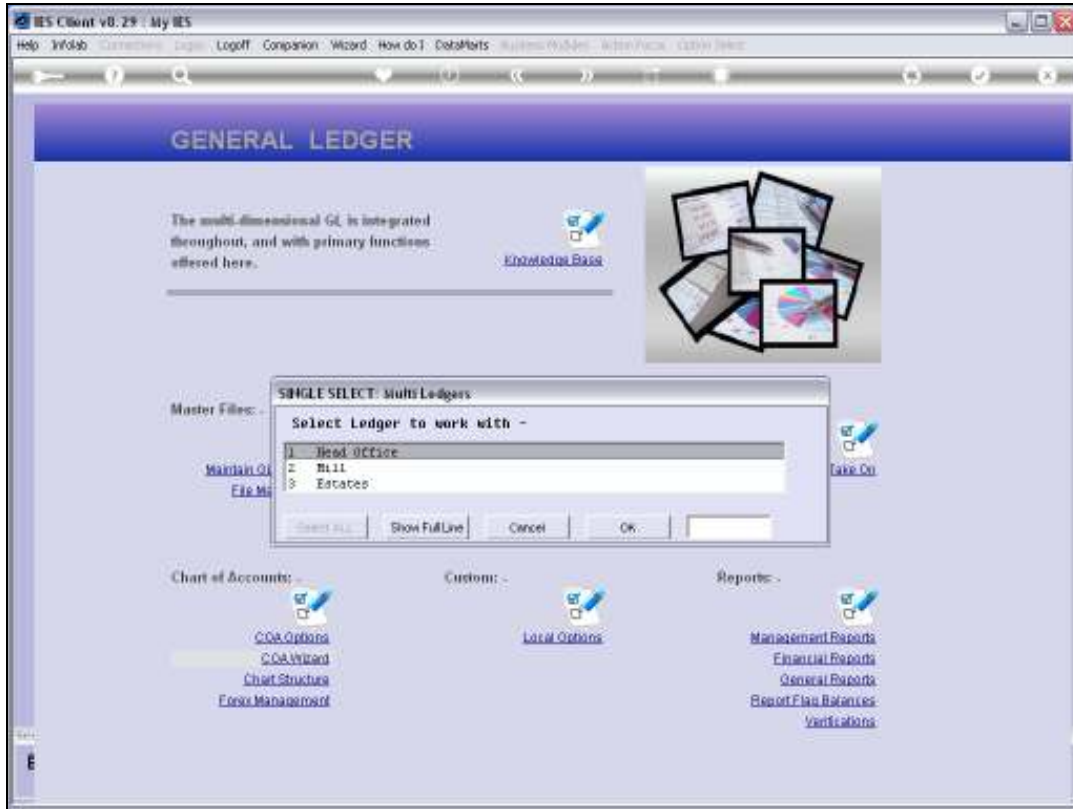


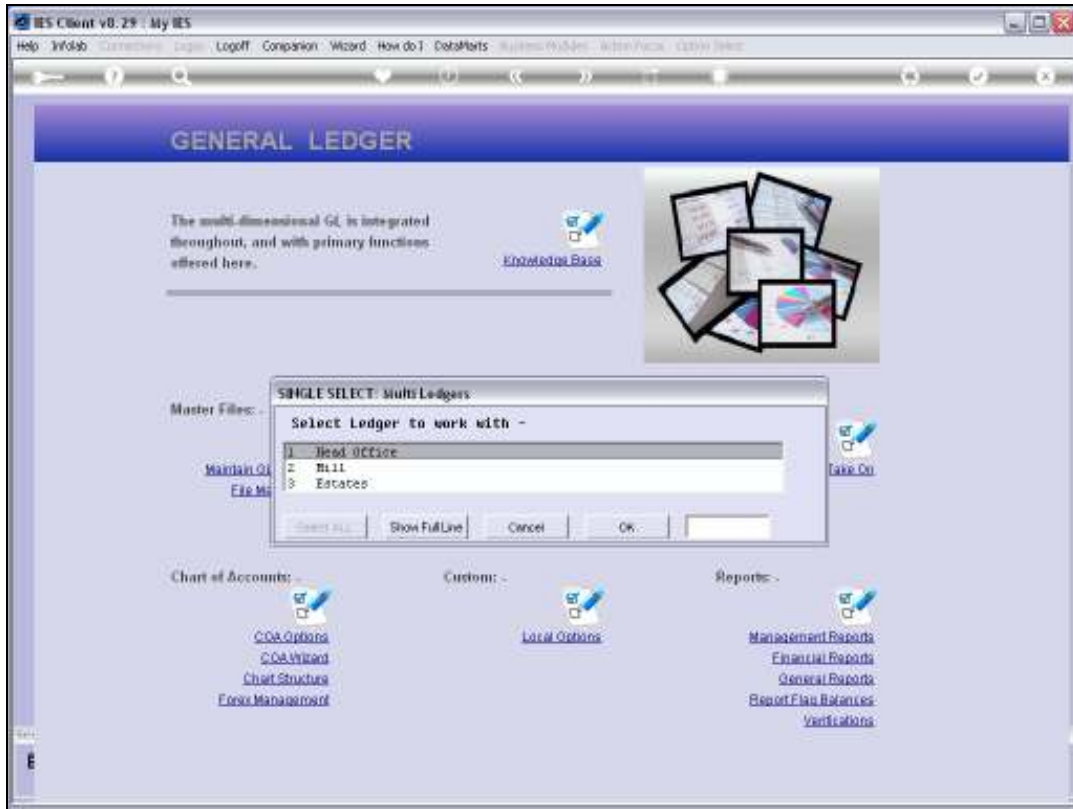


Slide 1

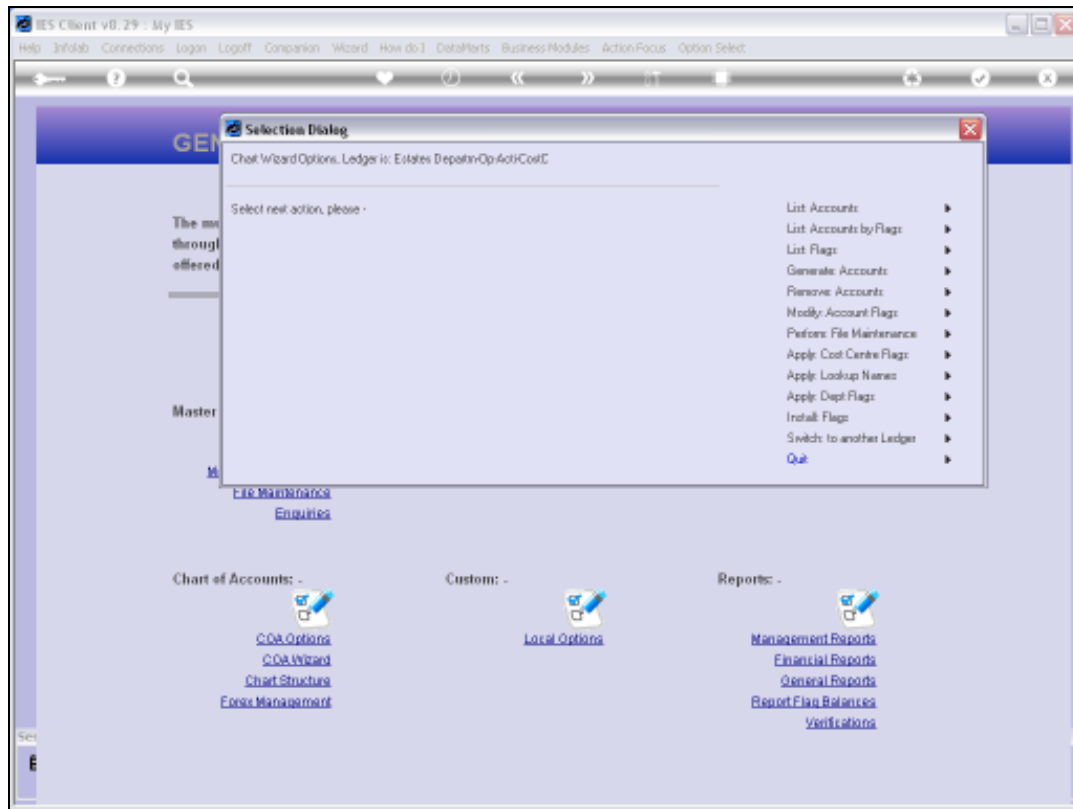
Slide notes: We need Report Flags to use with our Chart, and we can upload our own custom designed Flags, but we can also select from the system library for any of the Report Flag types.



Slide 2
Slide notes:

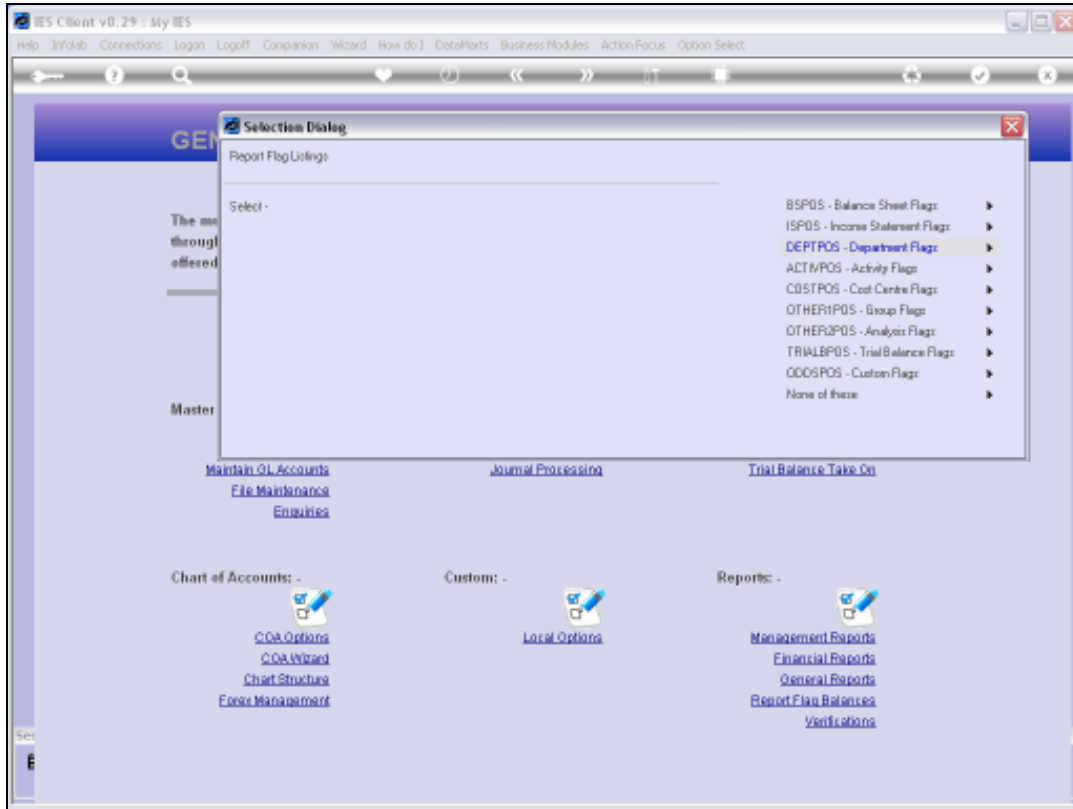


Slide 3
Slide notes:

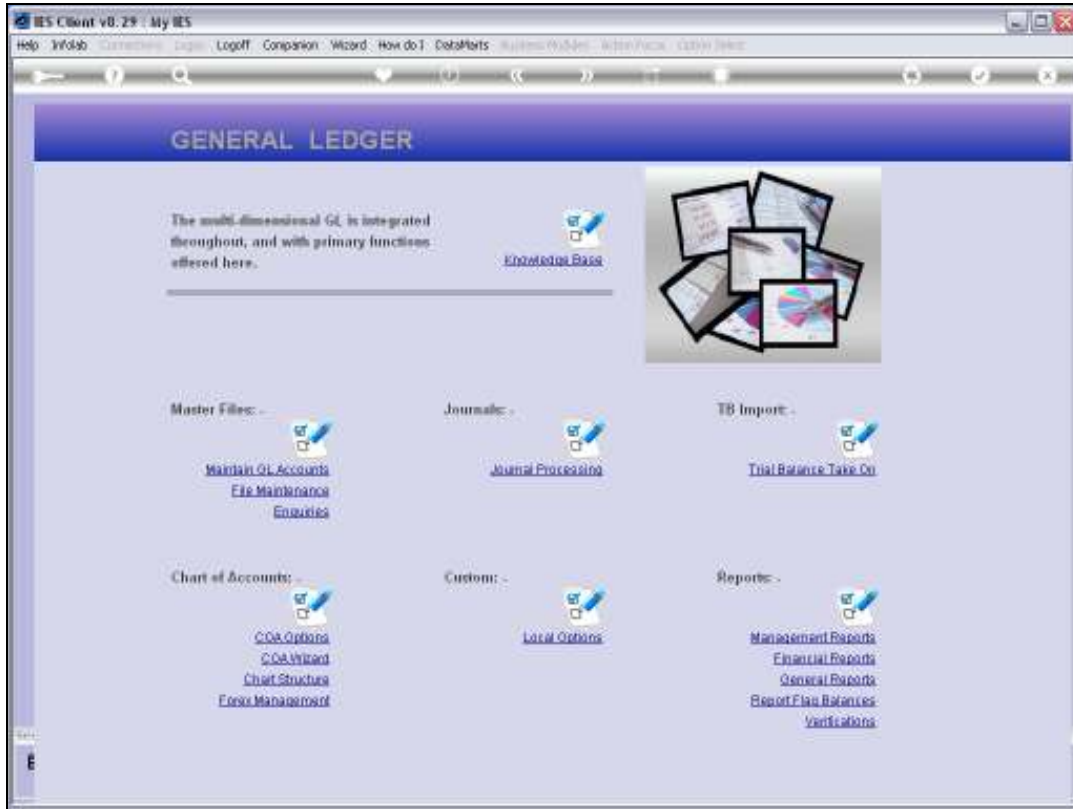


Slide 4

Slide notes: First we will perform a Report of Cost Centre Flags, to show that there are none so far.



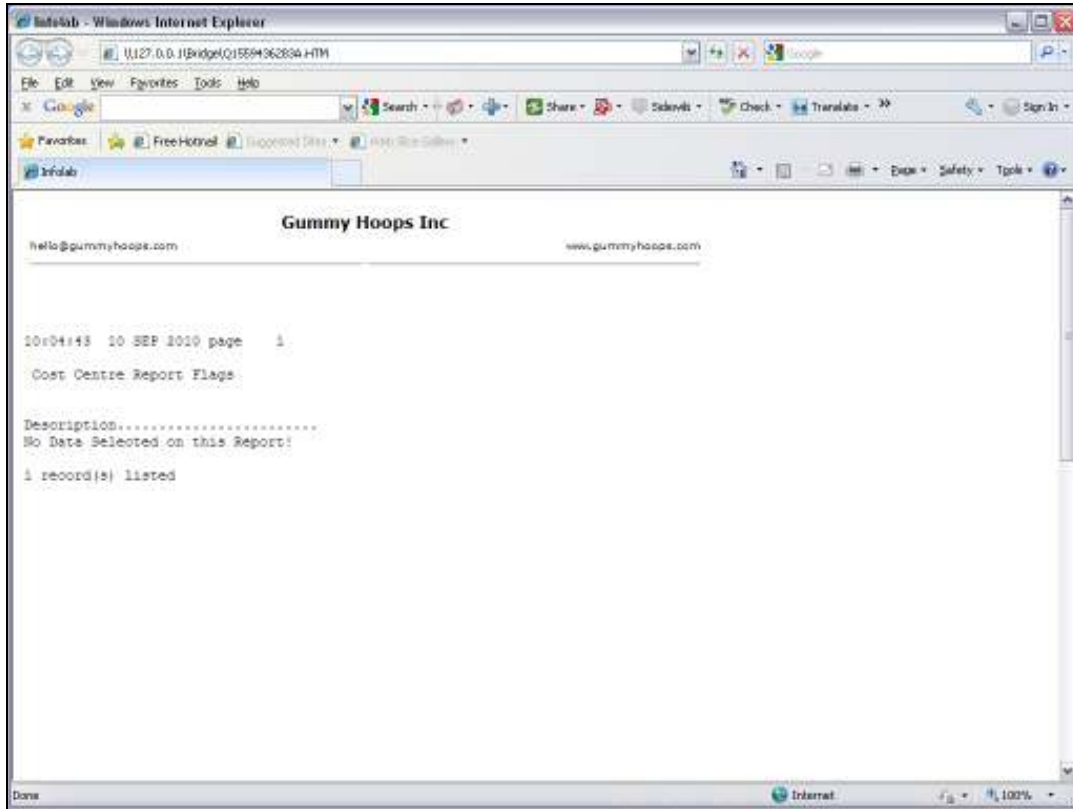
Slide 5
Slide notes:



Slide 6
Slide notes:

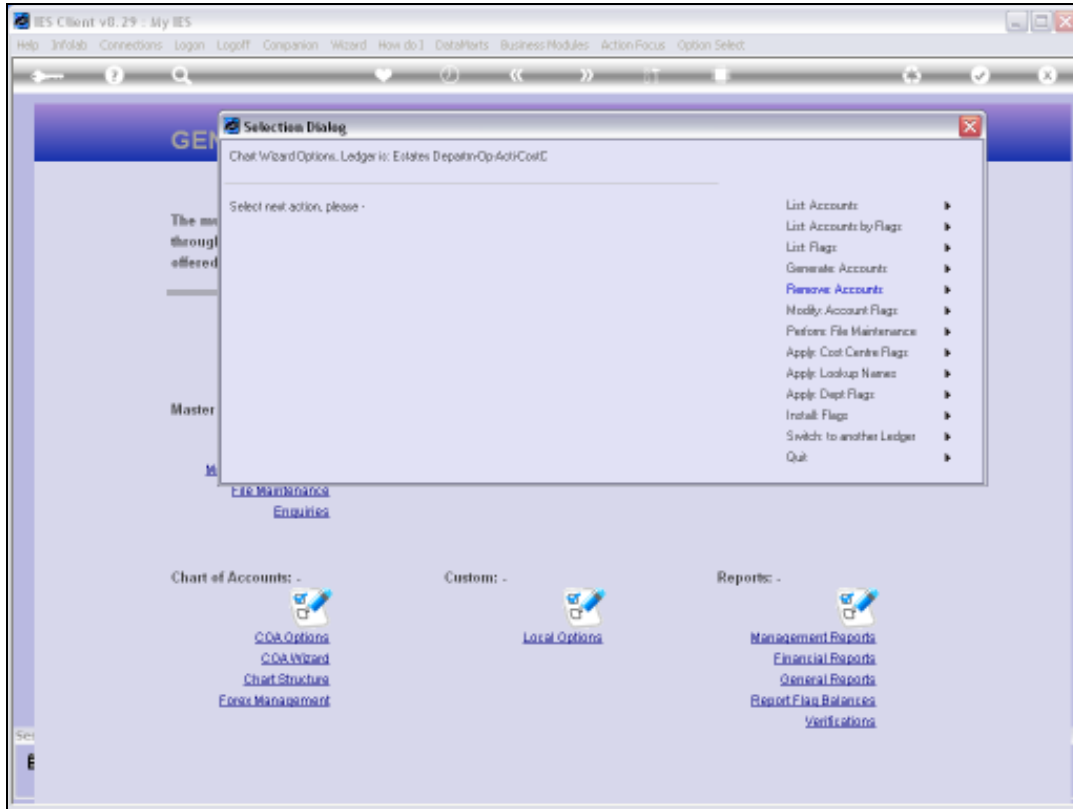


Slide 7
Slide notes:



Slide 8

Slide notes: So we see that there are no Cost Centre Flags in this Ledger yet.

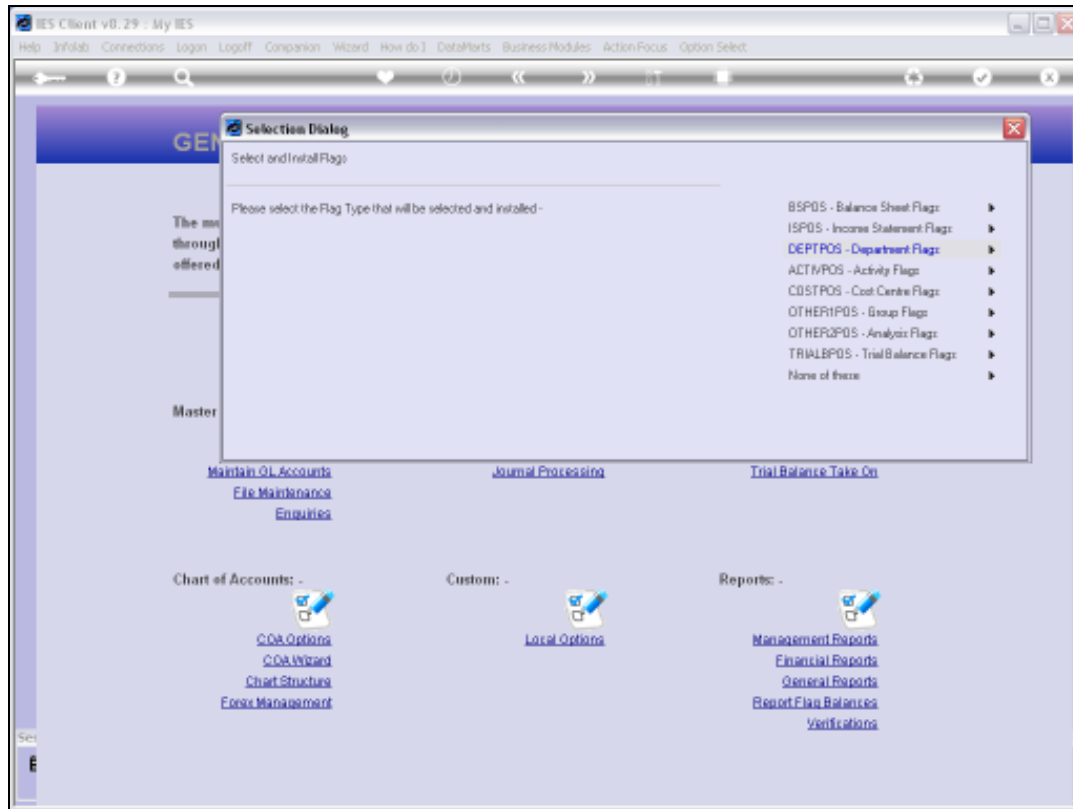


Slide 9

Slide notes: Next, we will install some Cost Centre Flags by selecting from the system library.

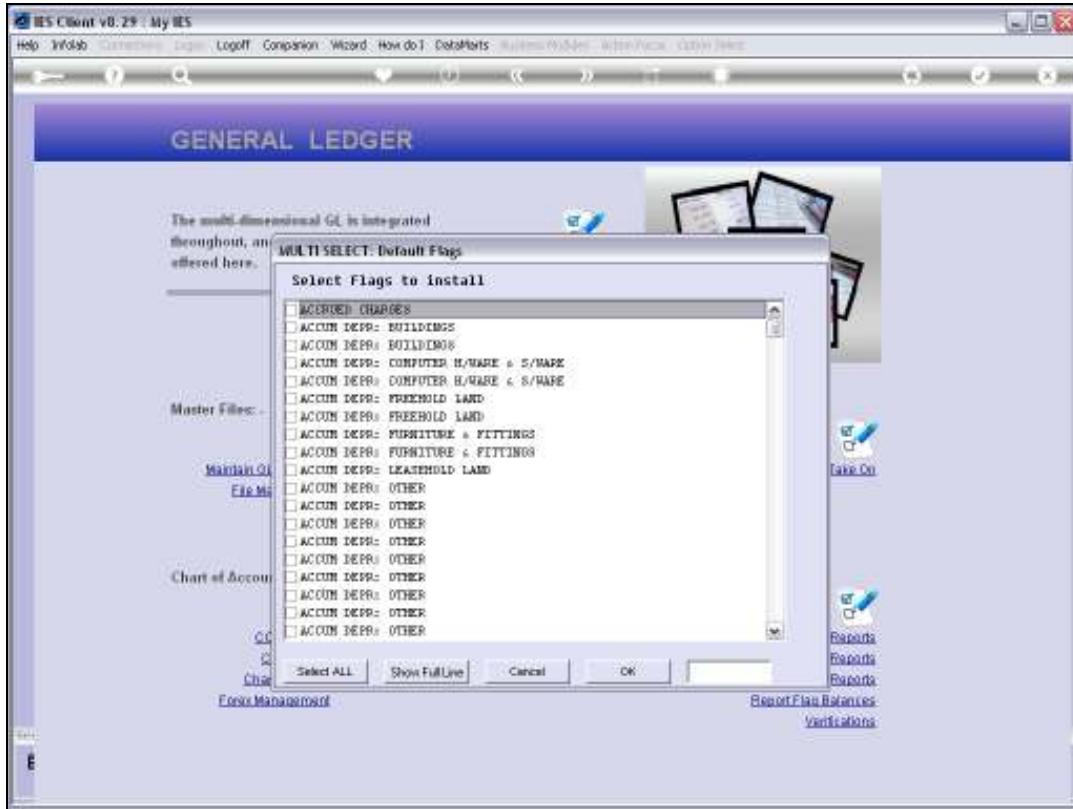


Slide 10
Slide notes:

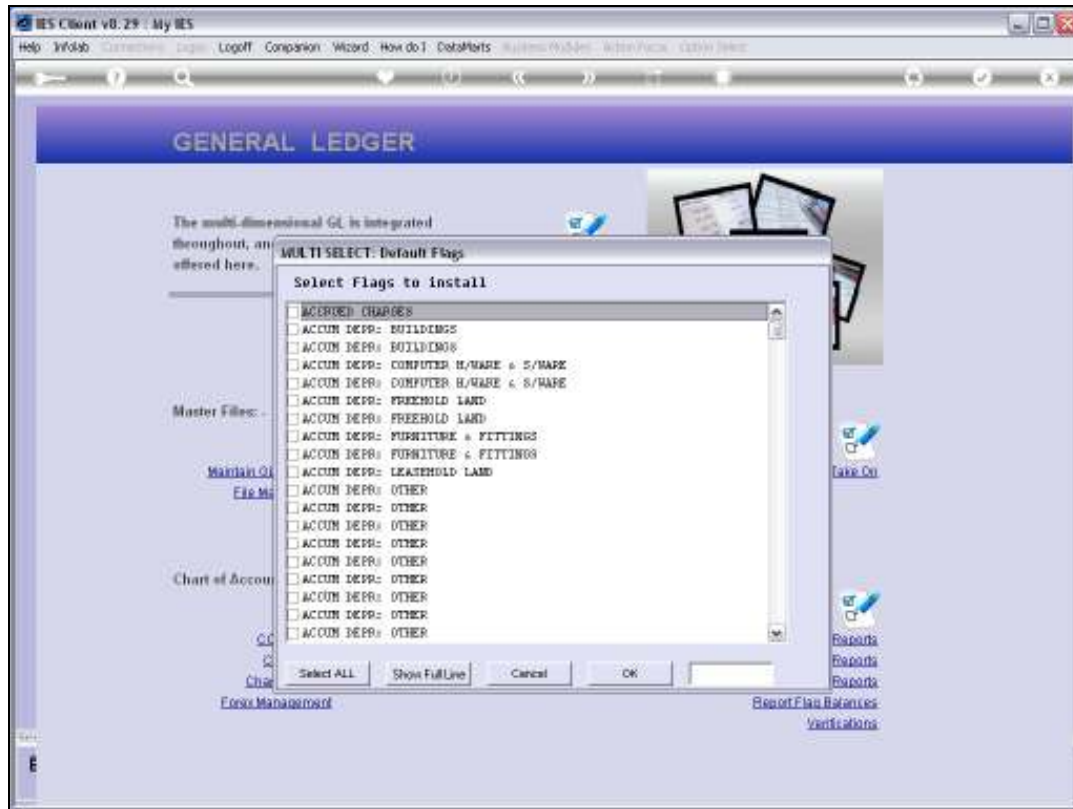


Slide 11

Slide notes: There are options for all of the Report Flag types. In this example, we will choose Cost Centre Flags.

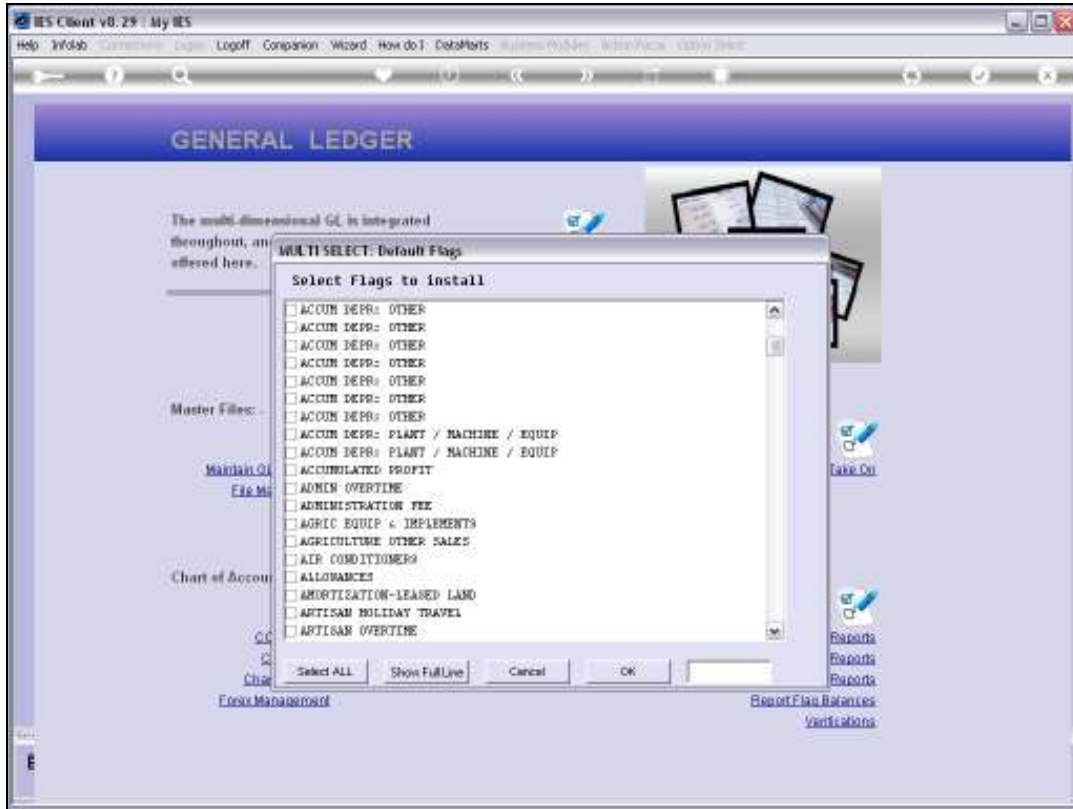


Slide 12
Slide notes:

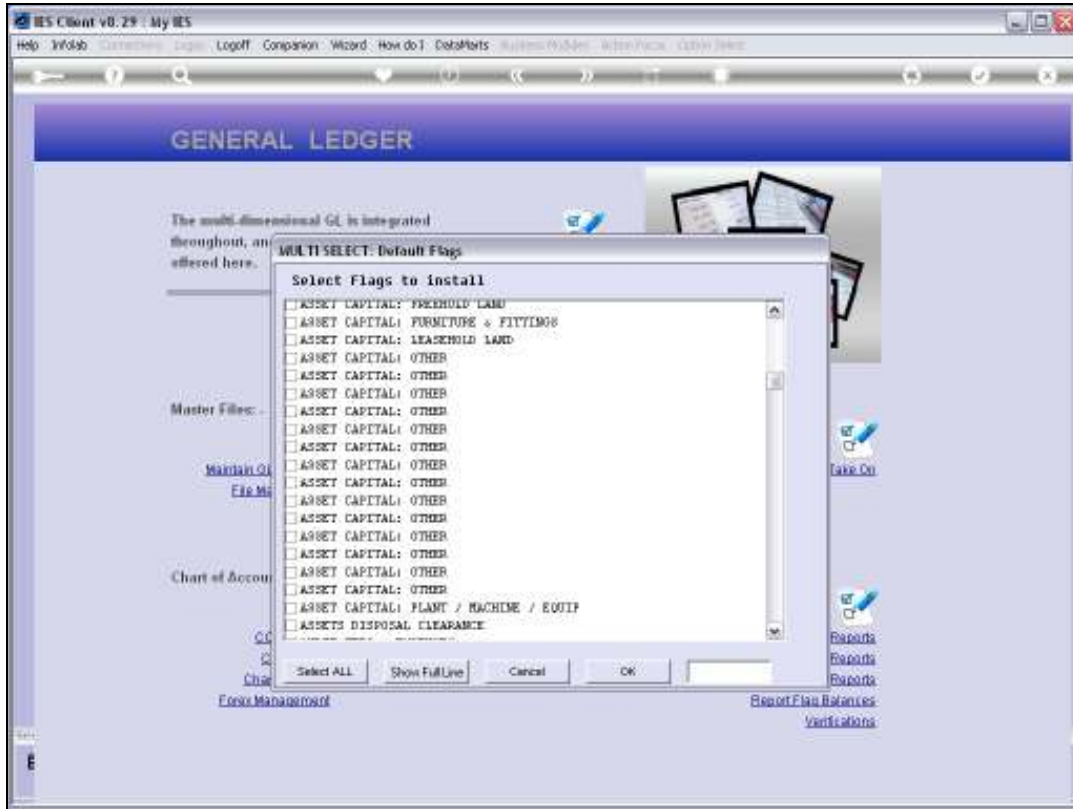


Slide 13

Slide notes: We can choose any, some or all. We can also use any of these Cost Centres to install and then subsequently change any of the Names, if we want.

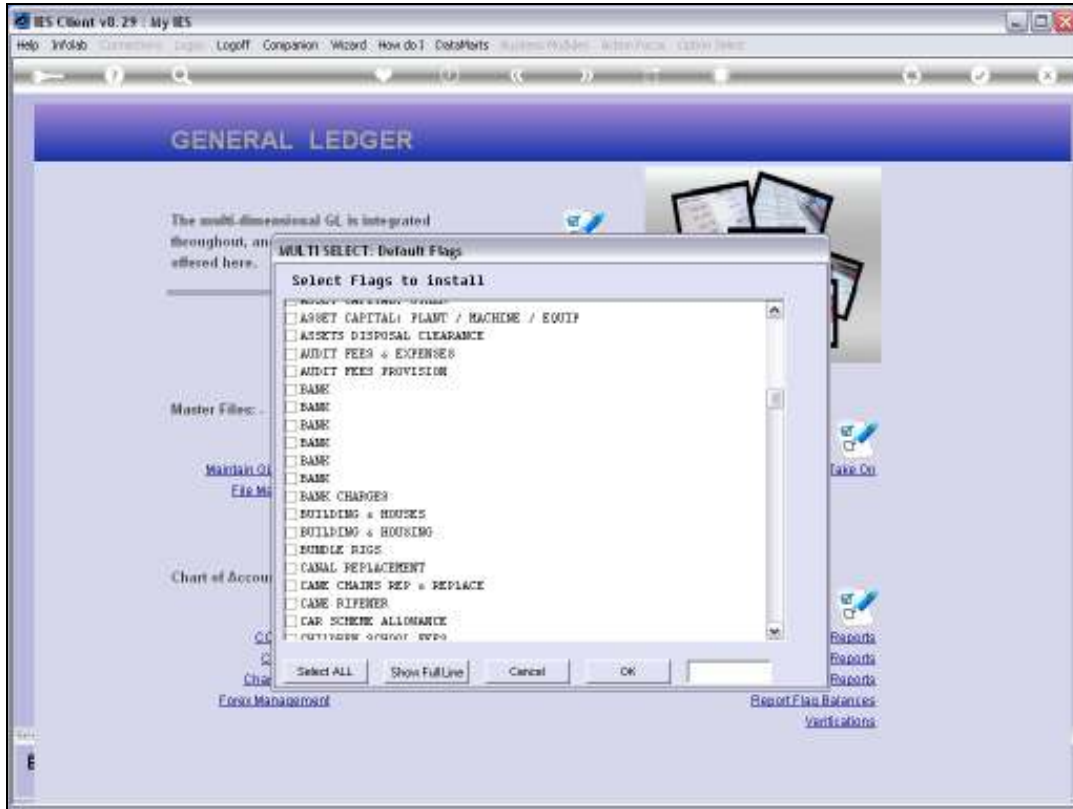


Slide 14
Slide notes:

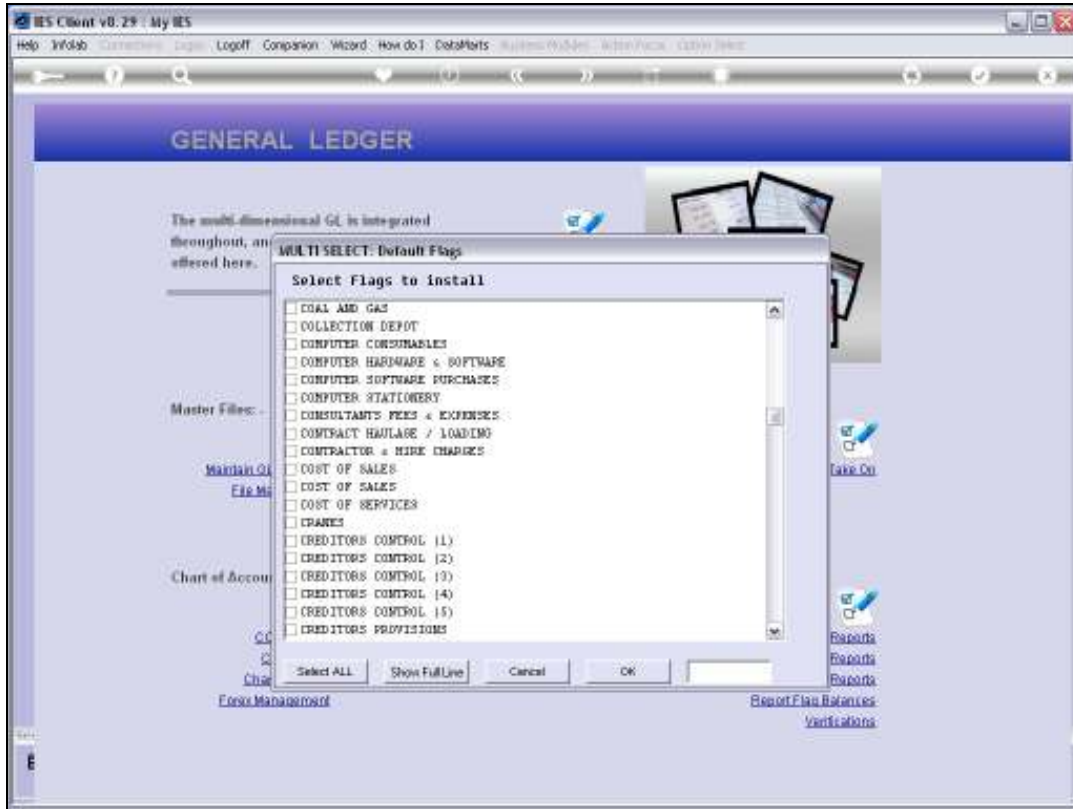


Slide 15

Slide notes:

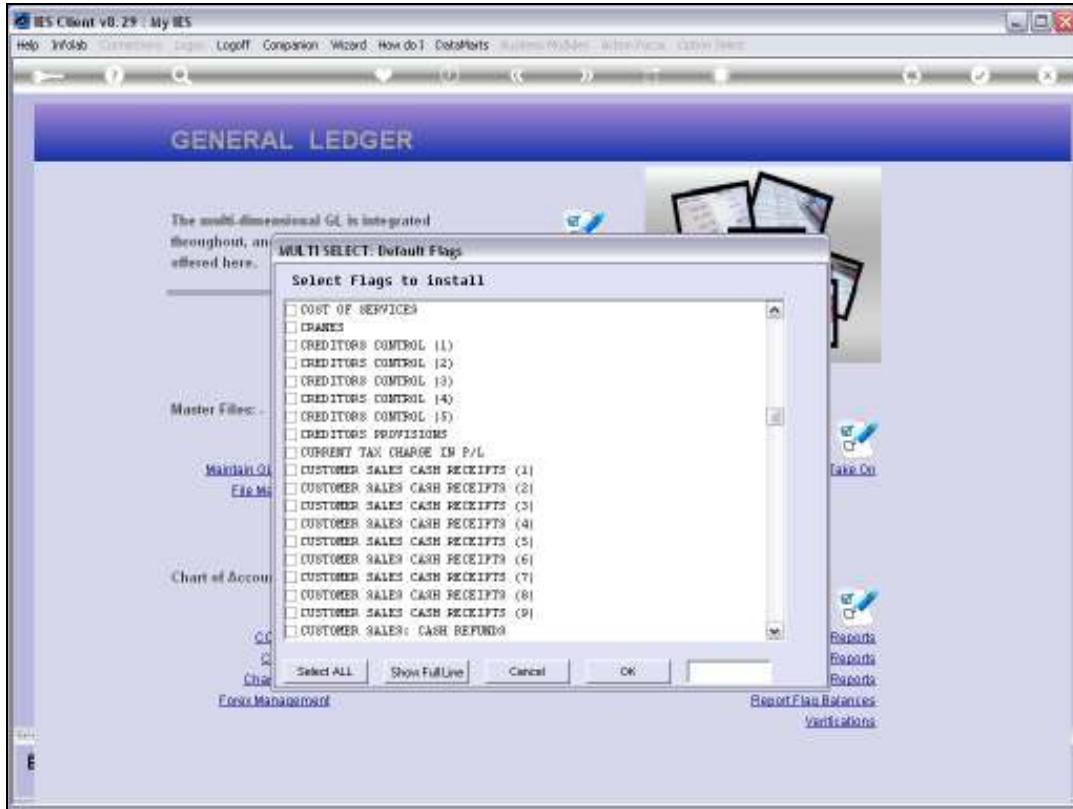


Slide 16
Slide notes:

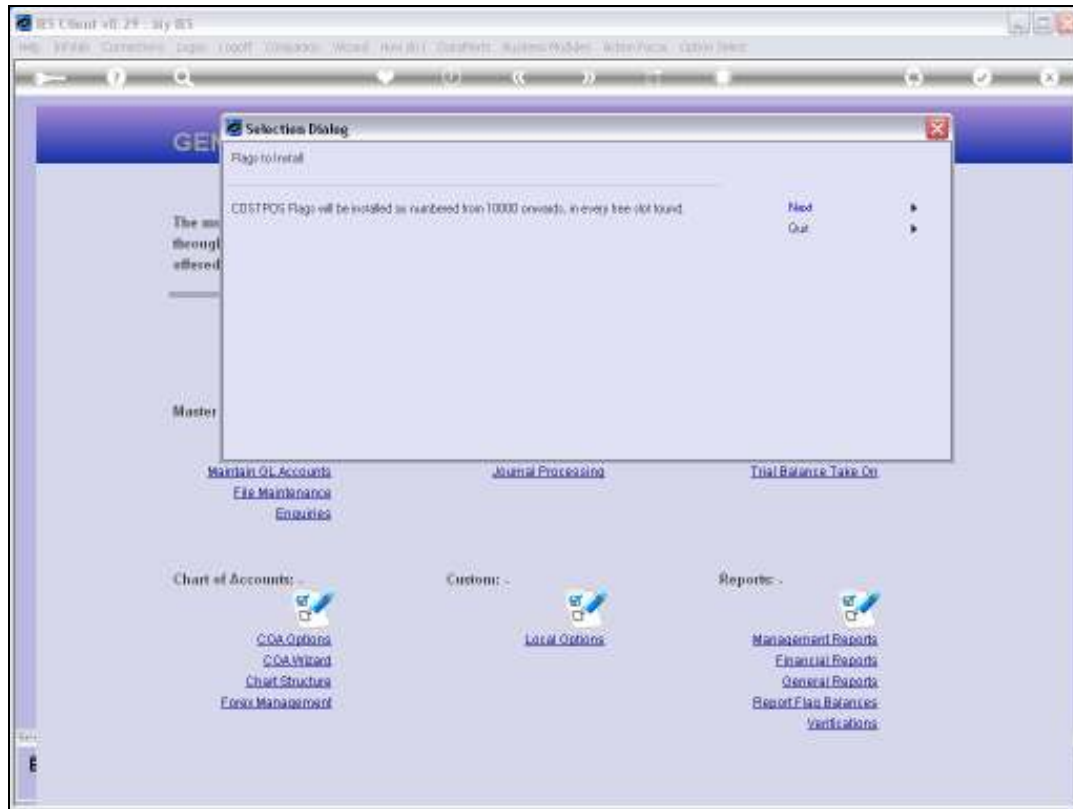


Slide 17

Slide notes:



Slide 18
Slide notes:

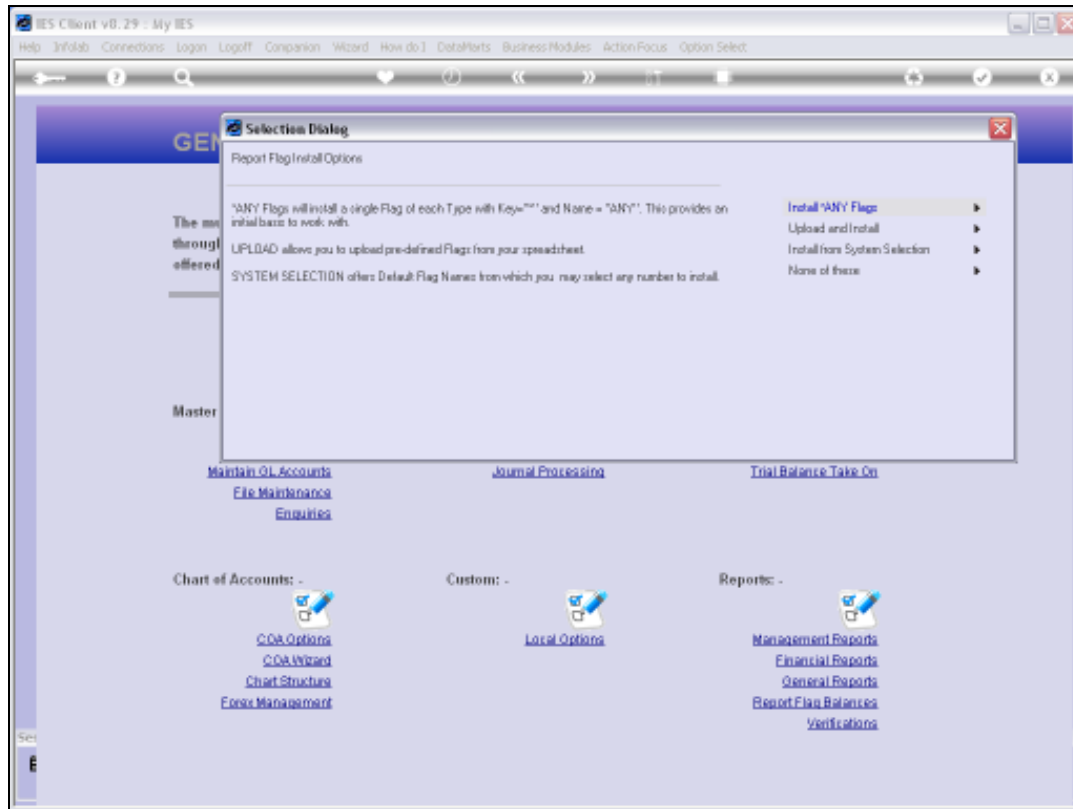


Slide 19

Slide notes: The system looks at the structure of the current Ledger, and decides to number the Cost Centres according to the length of the Ledger segment for Cost Centres. If any number is already in use, it will not be overwritten.

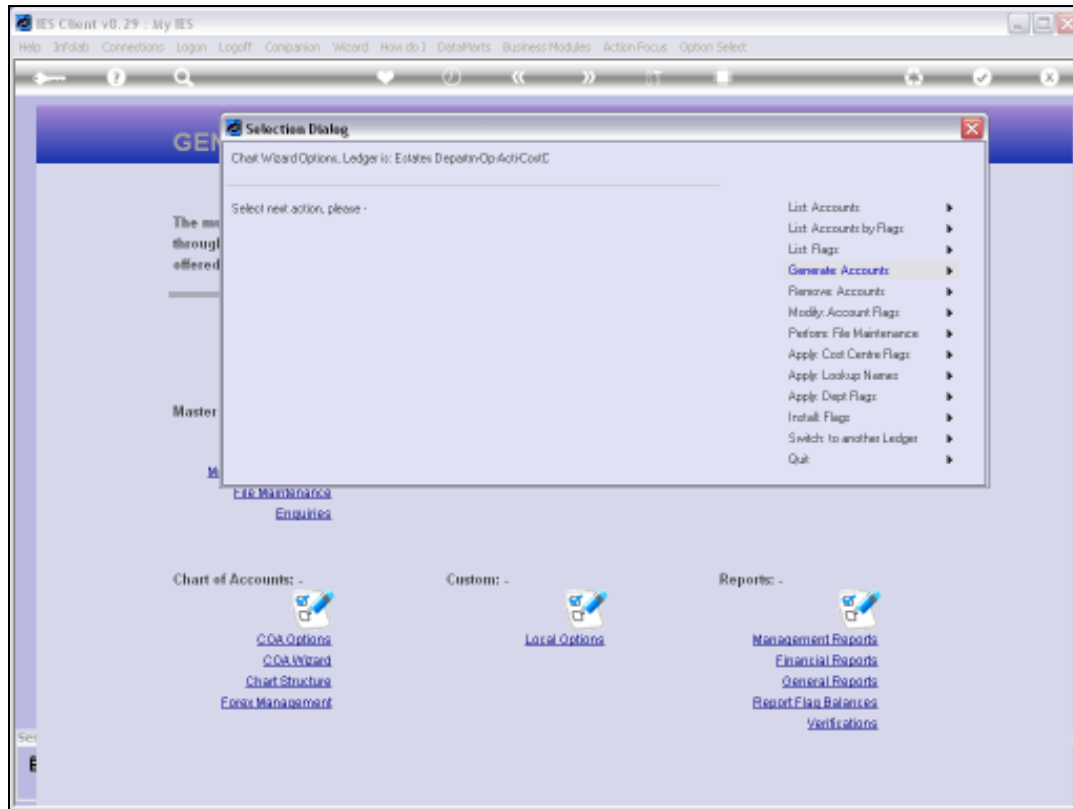


Slide 20
Slide notes:



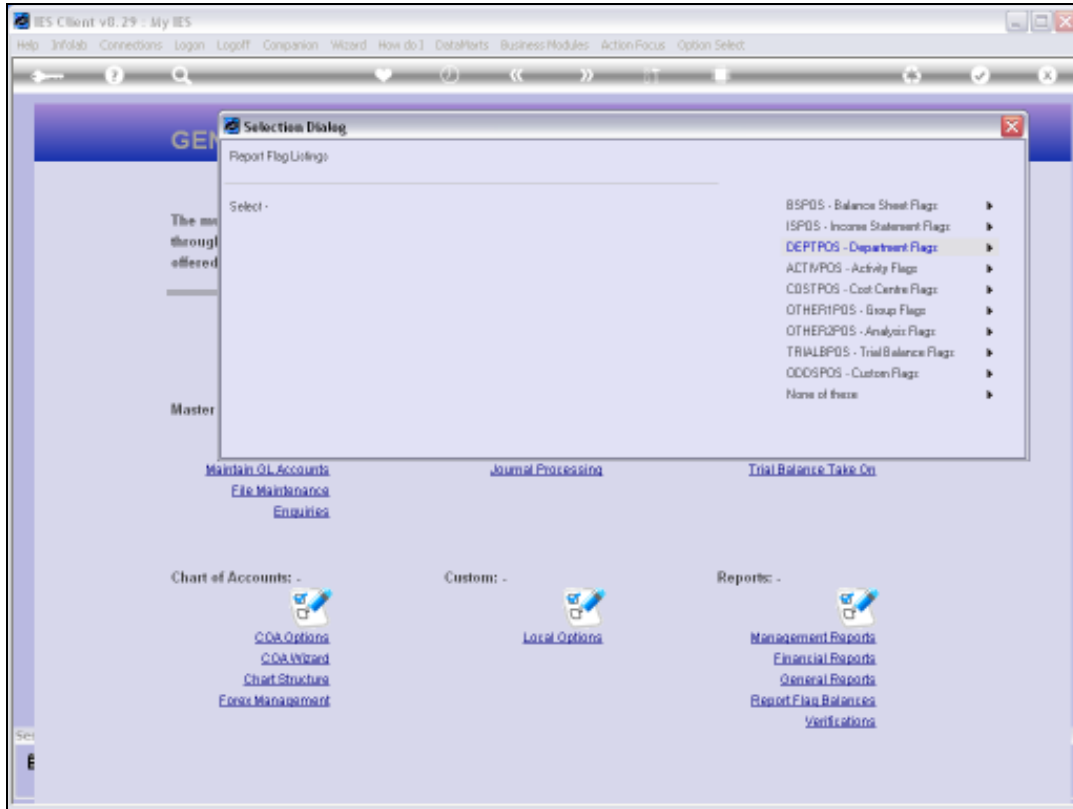
Slide 21

Slide notes: And now it's done. We can at any time add more Cost Centres, upload others, make changes, etc.



Slide 22

Slide notes: Now we will perform the Cost Centre Flag report again to show that the selected Cost Centres have actually been created in the Chart.



Slide 23

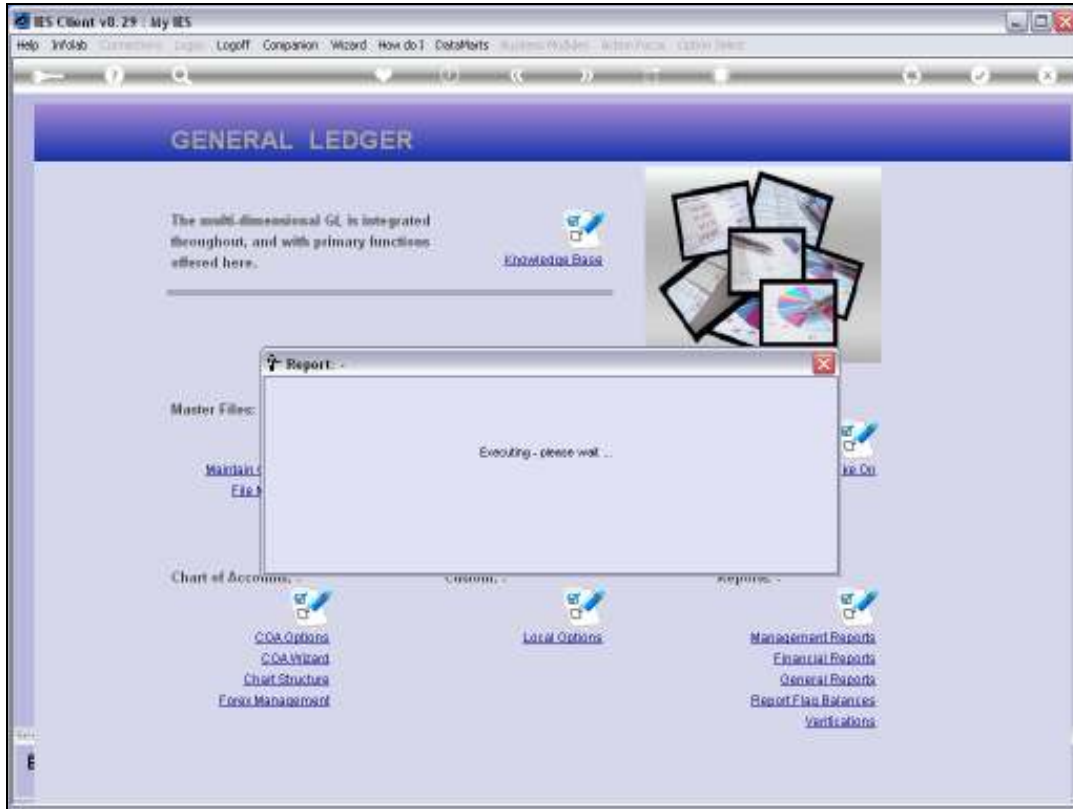
Slide notes:



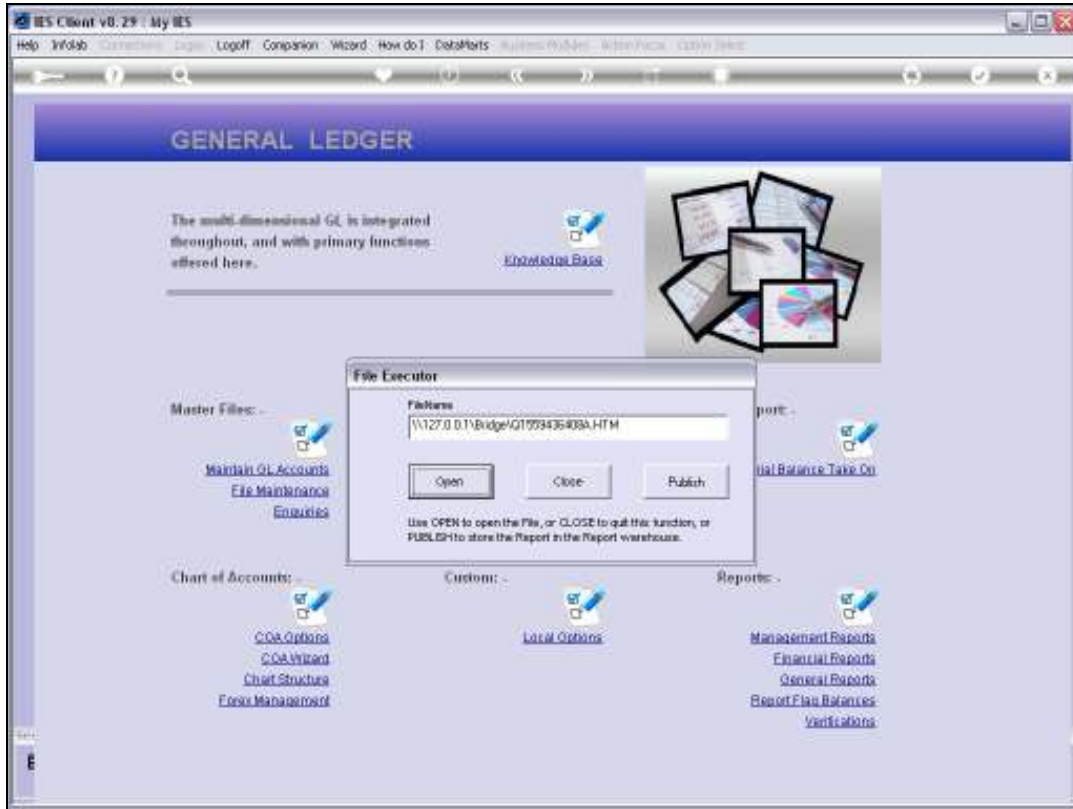
Slide 24
Slide notes:



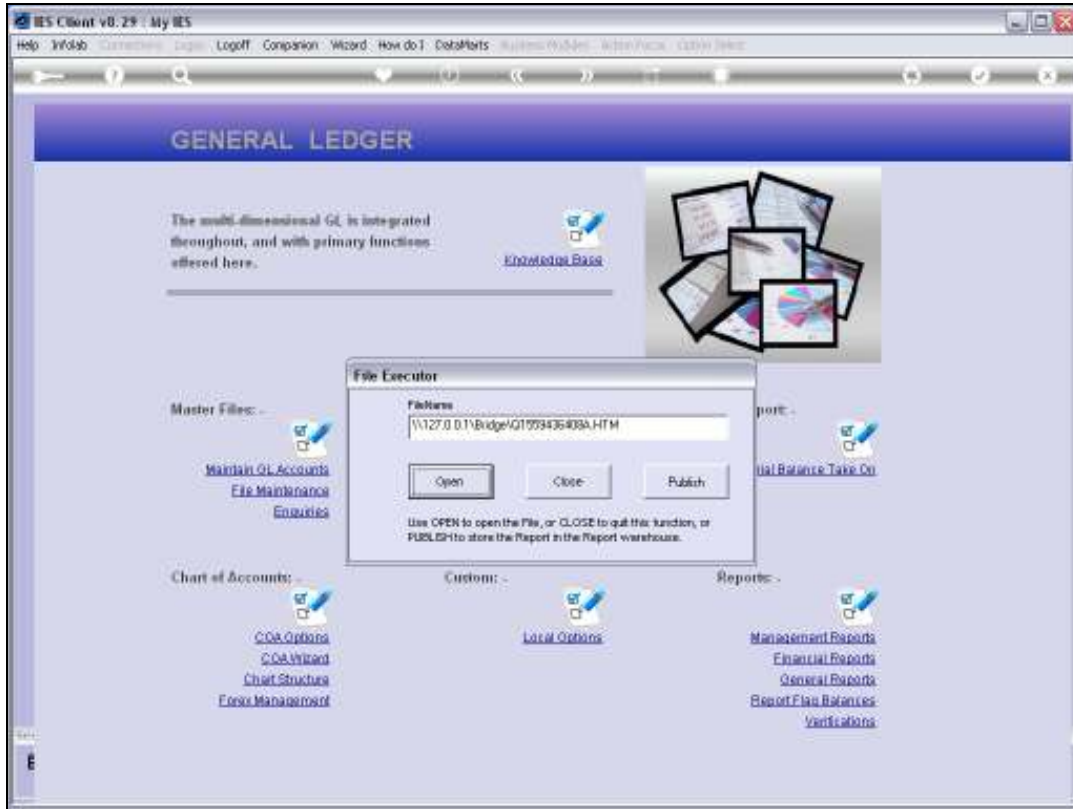
Slide 25
Slide notes:



Slide 26
Slide notes:

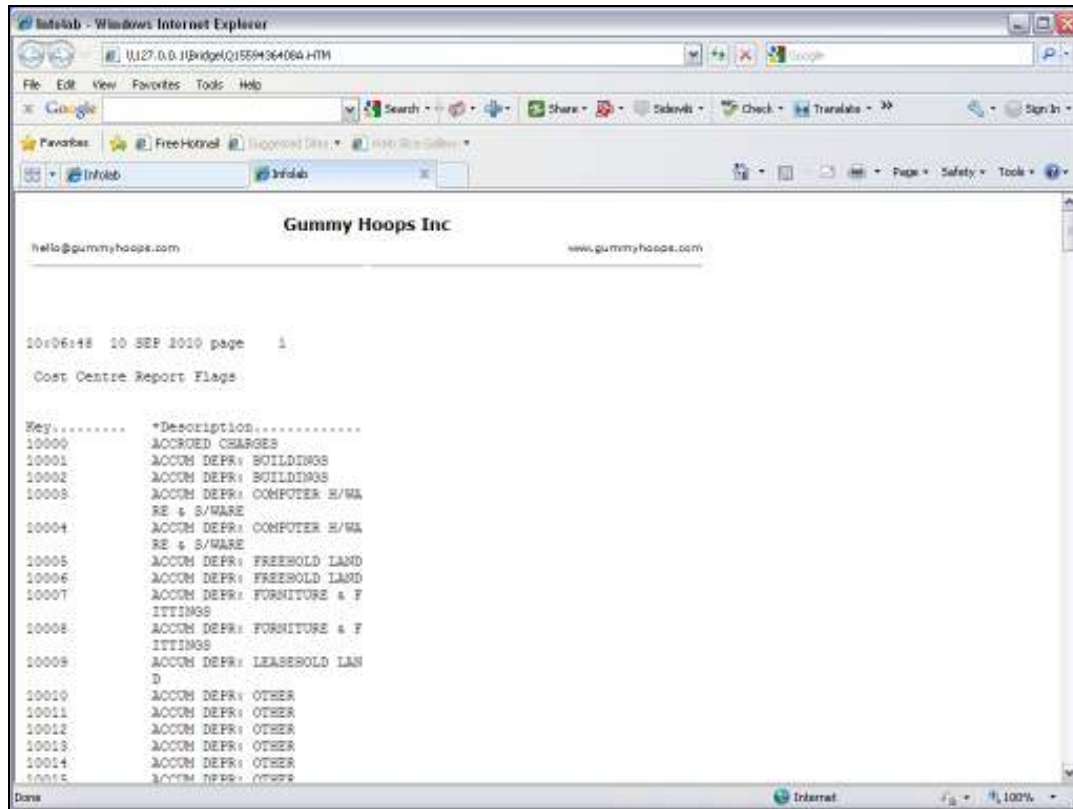


Slide 27
Slide notes:



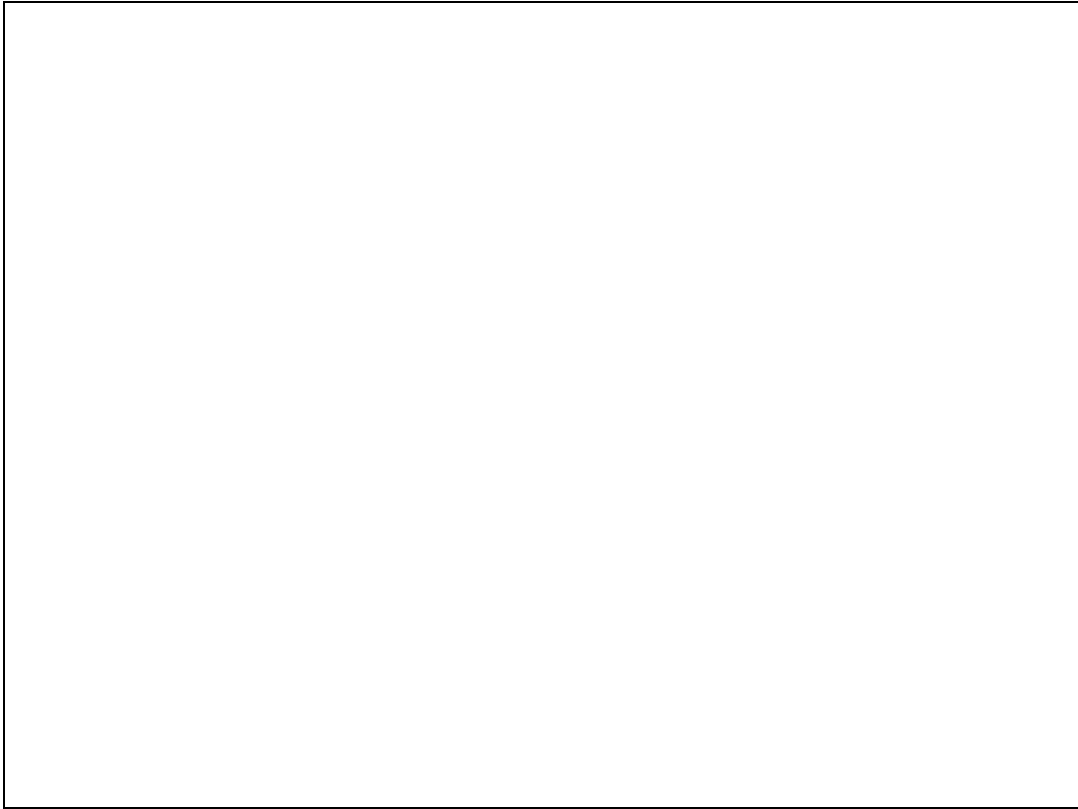
Slide 28

Slide notes:



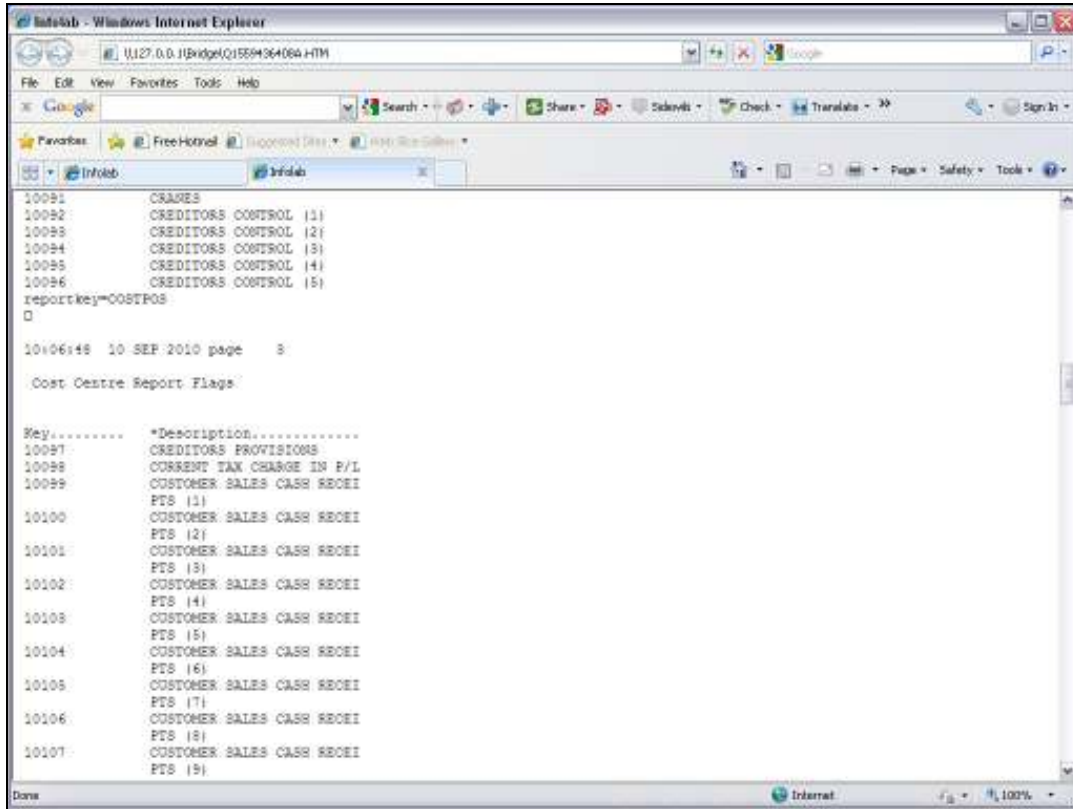
Slide 29

Slide notes: And our Report reveals that all these Cost Centres have been created and included for the Ledger Chart. Provided that the Cost Centre Key length is suitable, they can also be shared and are indeed already available to any other Ledgers in the Multi Ledger.

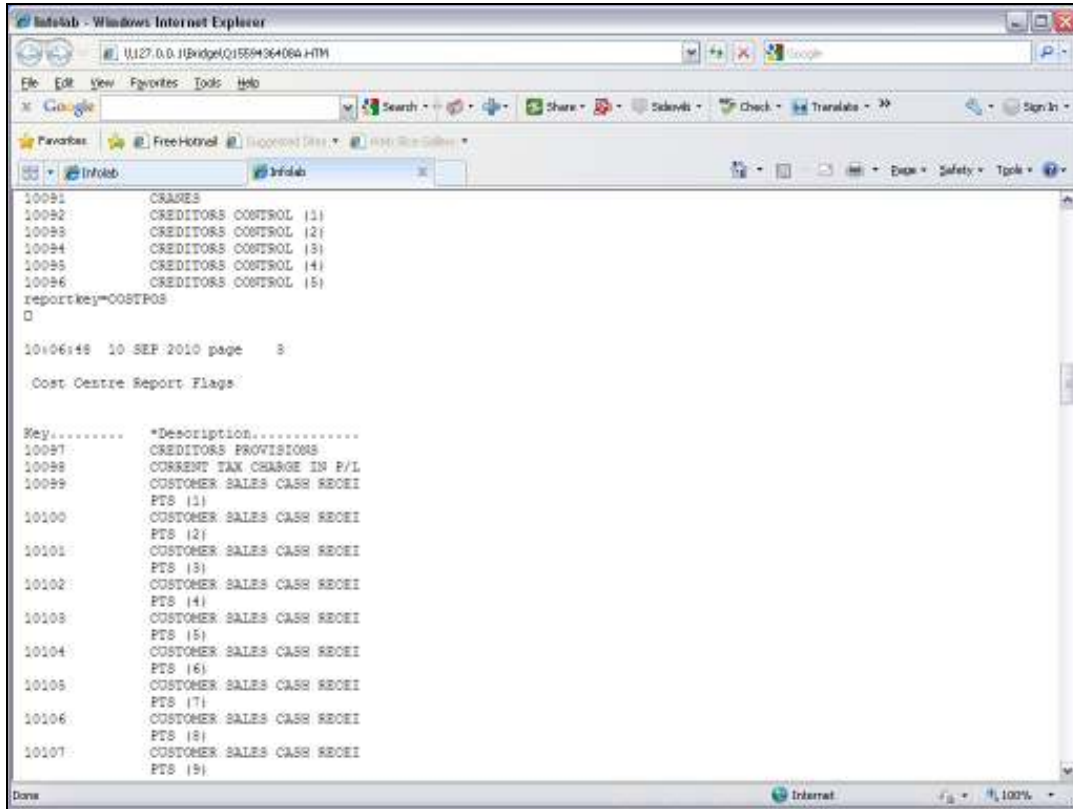


Slide 30

Slide notes:



Slide 31
Slide notes:



Slide 32
Slide notes: