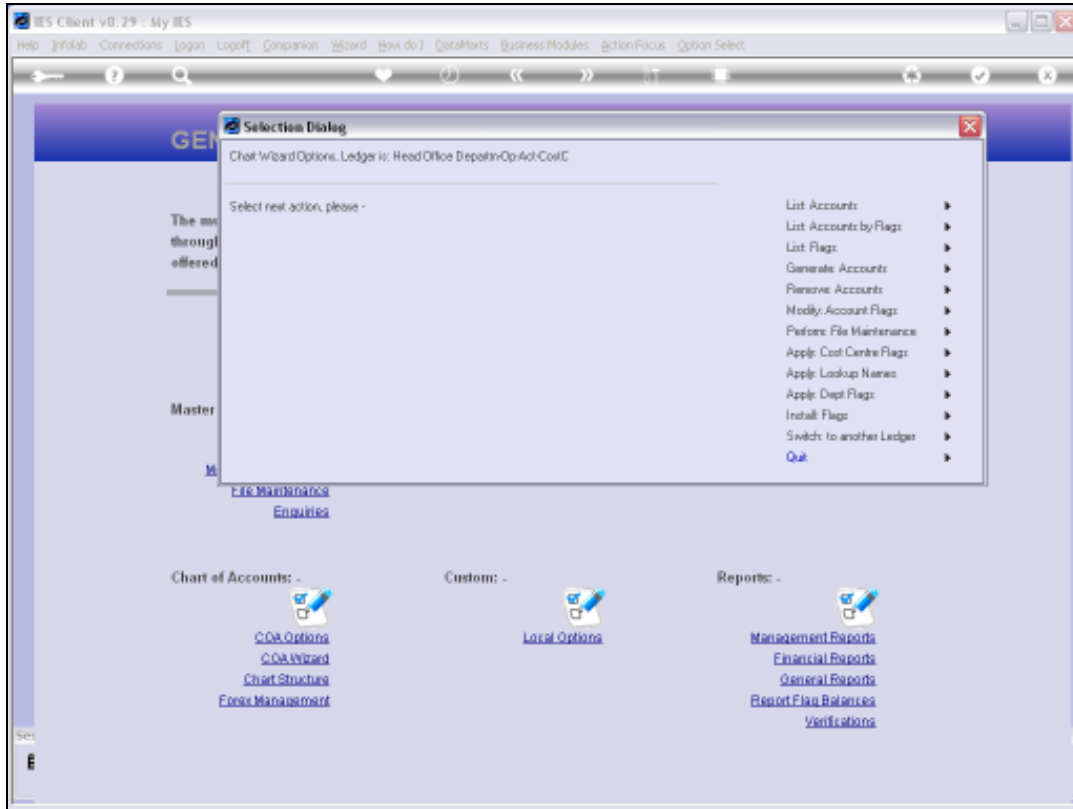


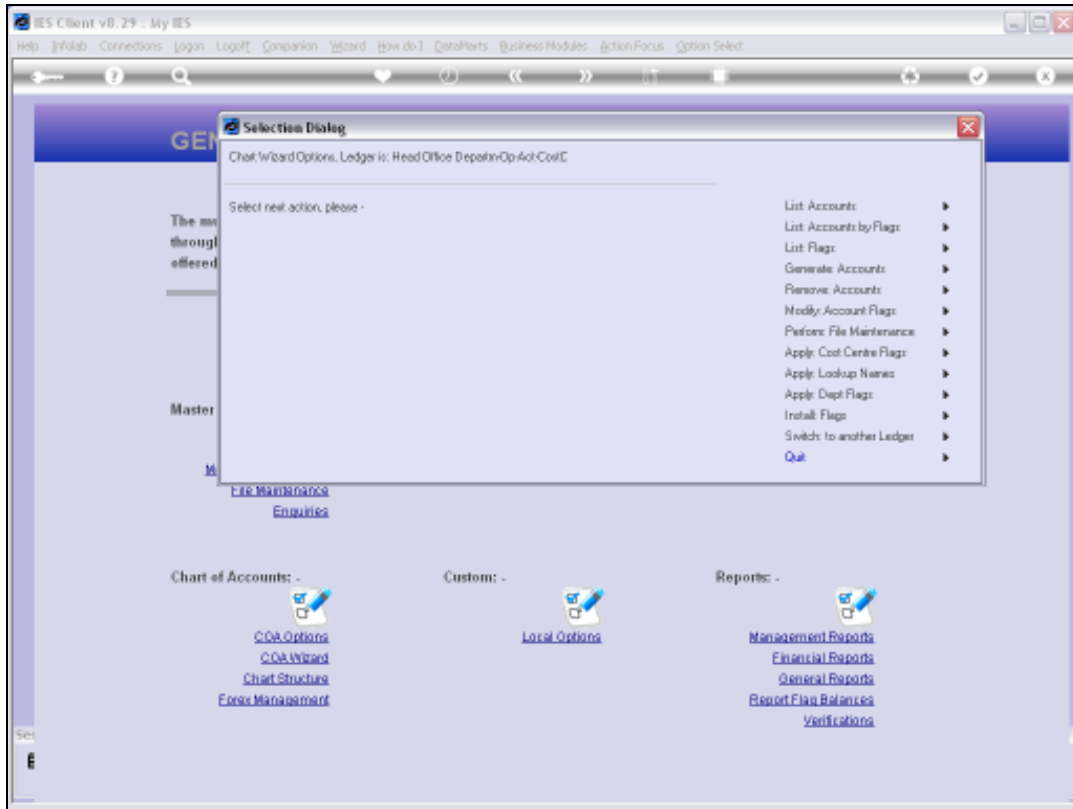
Slide 1

Slide notes: When we use the Chart wizard, we are always linked to a selected Ledger, the Name of which is shown at the main wizard menu.



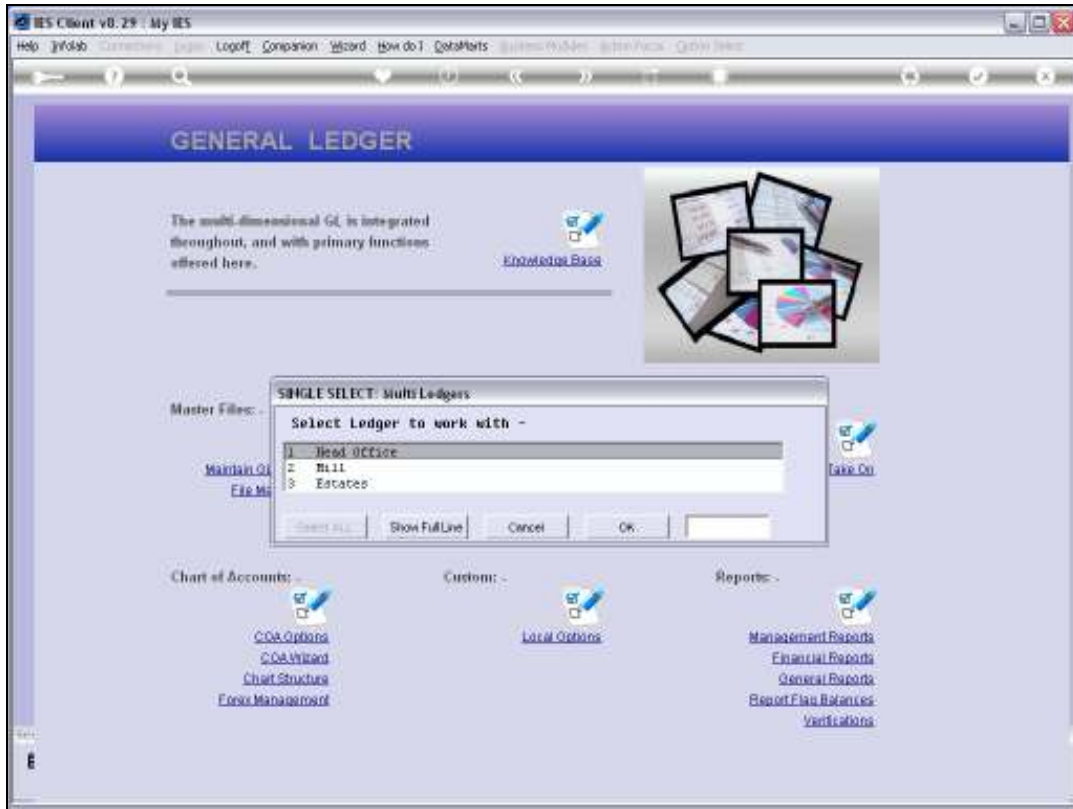
Slide 2

Slide notes: The structure is also shown, i.e. the number of characters for each major segment.

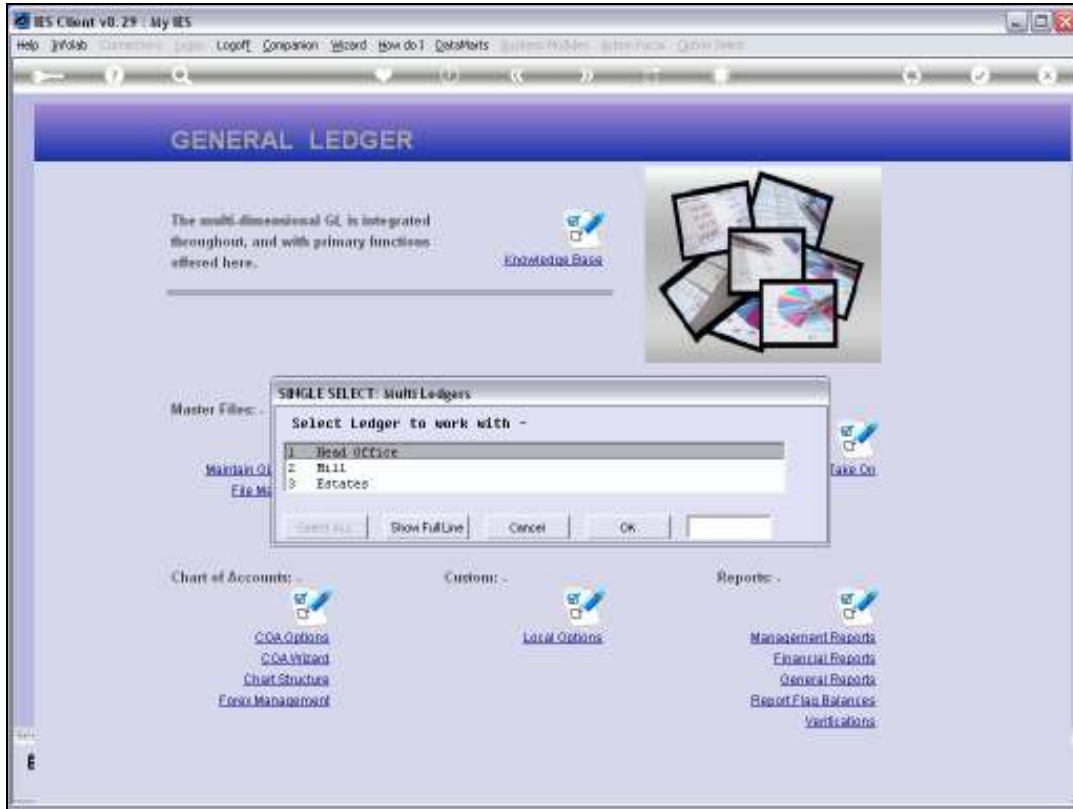


Slide 3

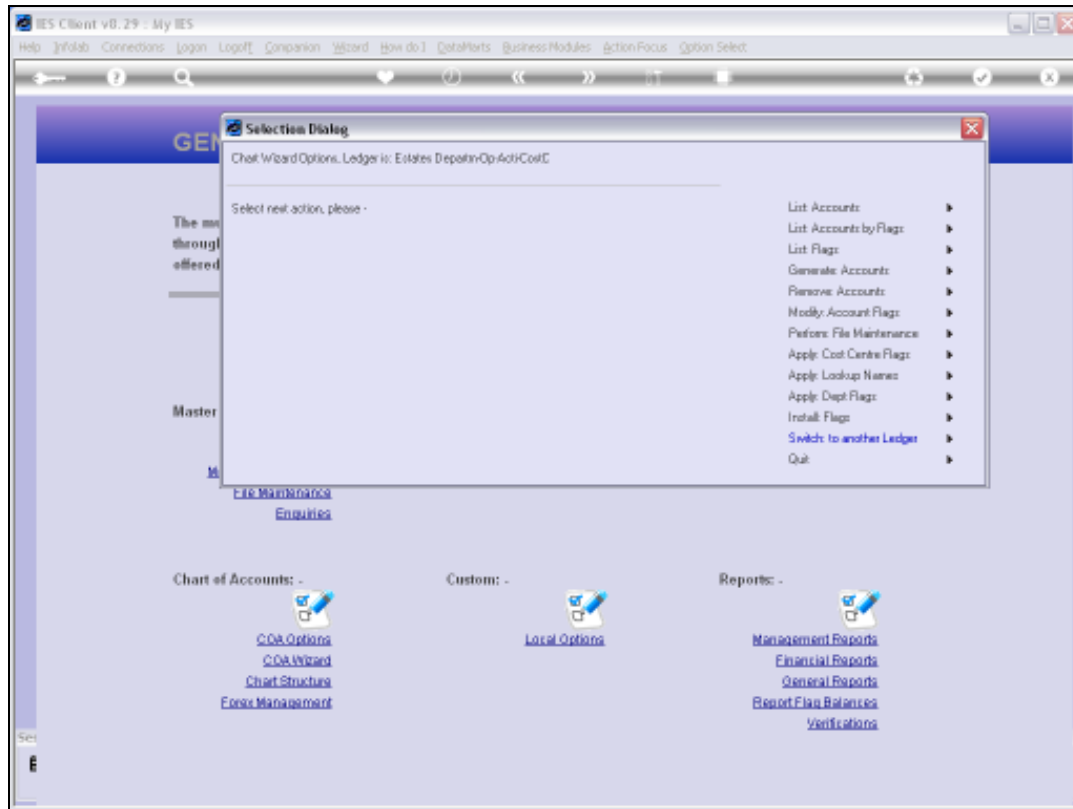
Slide notes: At any time we can choose to switch to another Ledger.



Slide 4
Slide notes:

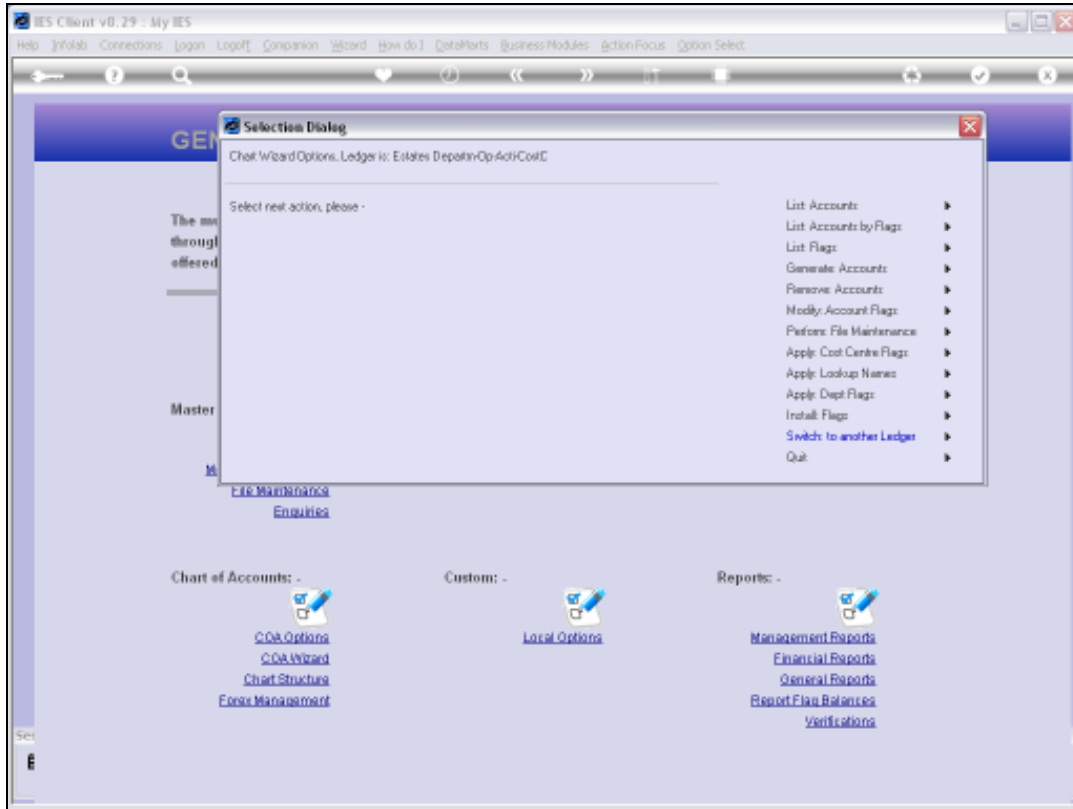


Slide 5
Slide notes:

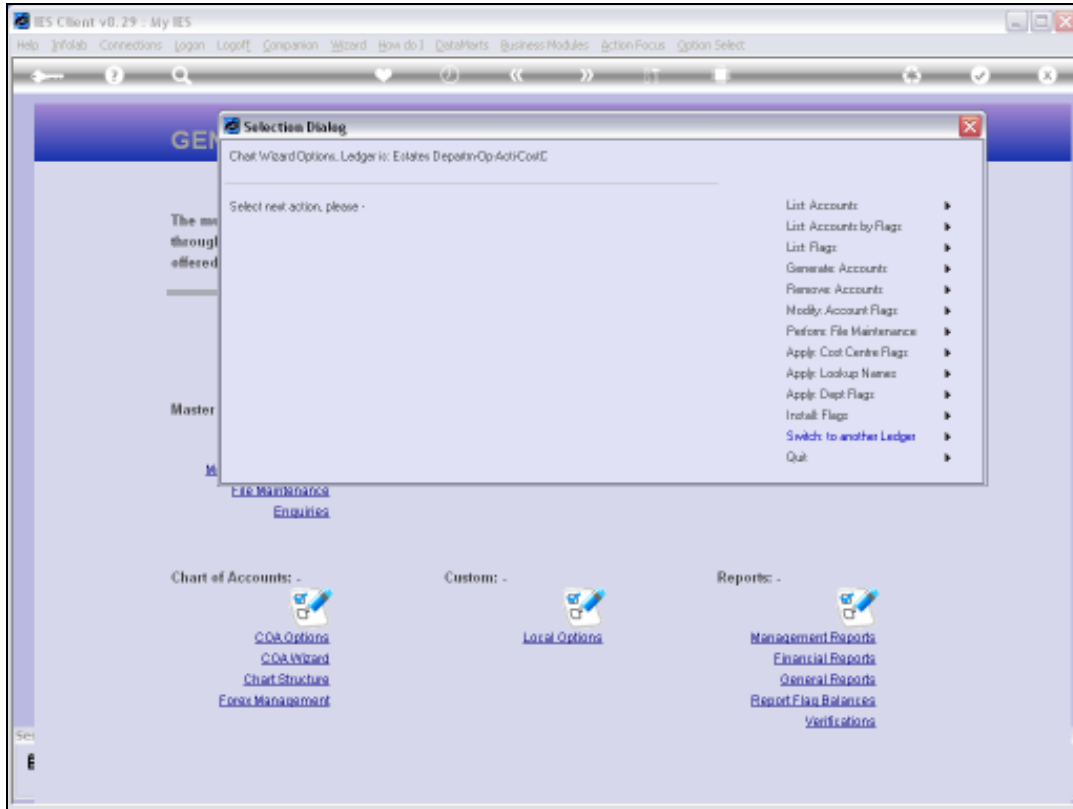


Slide 6

Slide notes: When we select a different Ledger, the Name and structure of this Ledger is shown, and from this point onwards or until the Ledger is changed again, all options that we use apply to the selected Ledger.



Slide 7
Slide notes:



Slide 8
Slide notes: