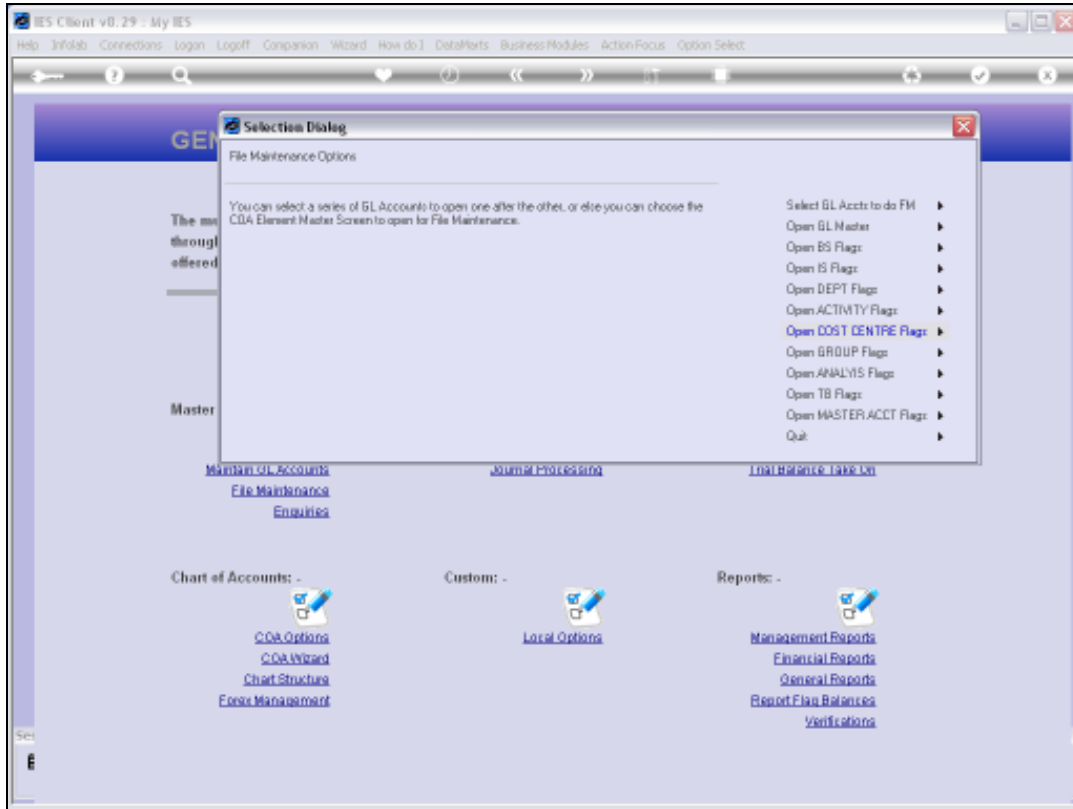


## Slide 1

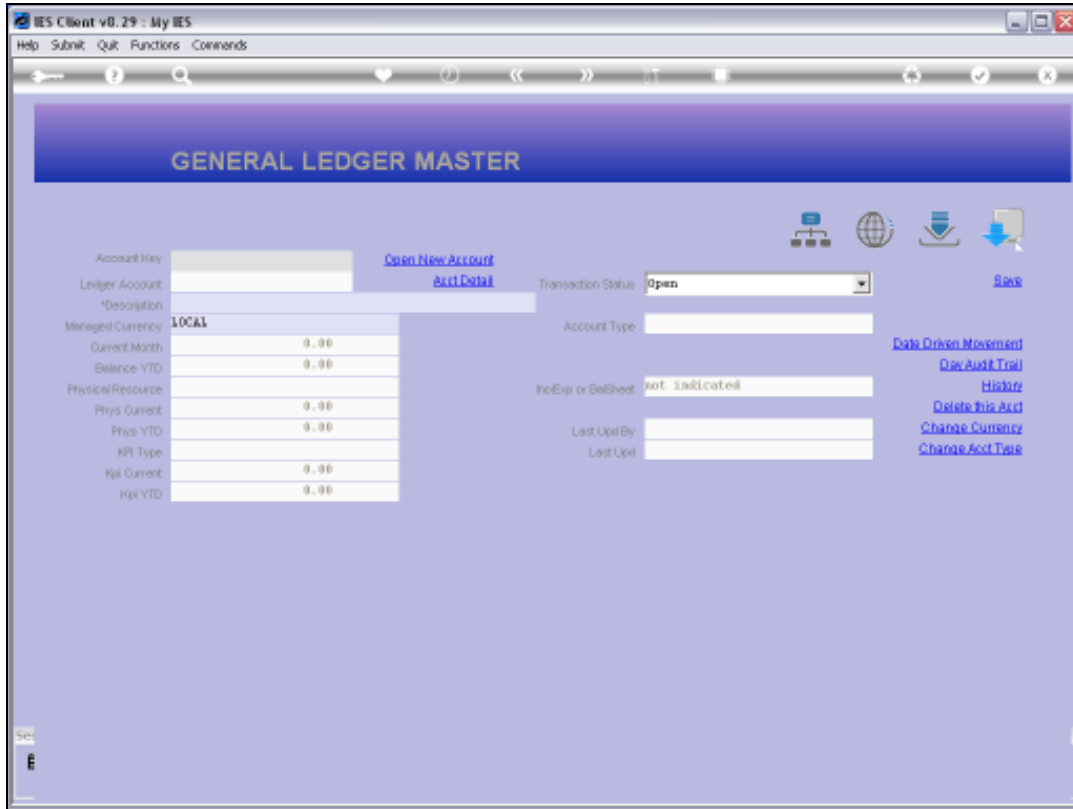
Slide notes: We cannot generate Accounts with the Chart wizard unless we have some Report Flags, at least 1 of each.



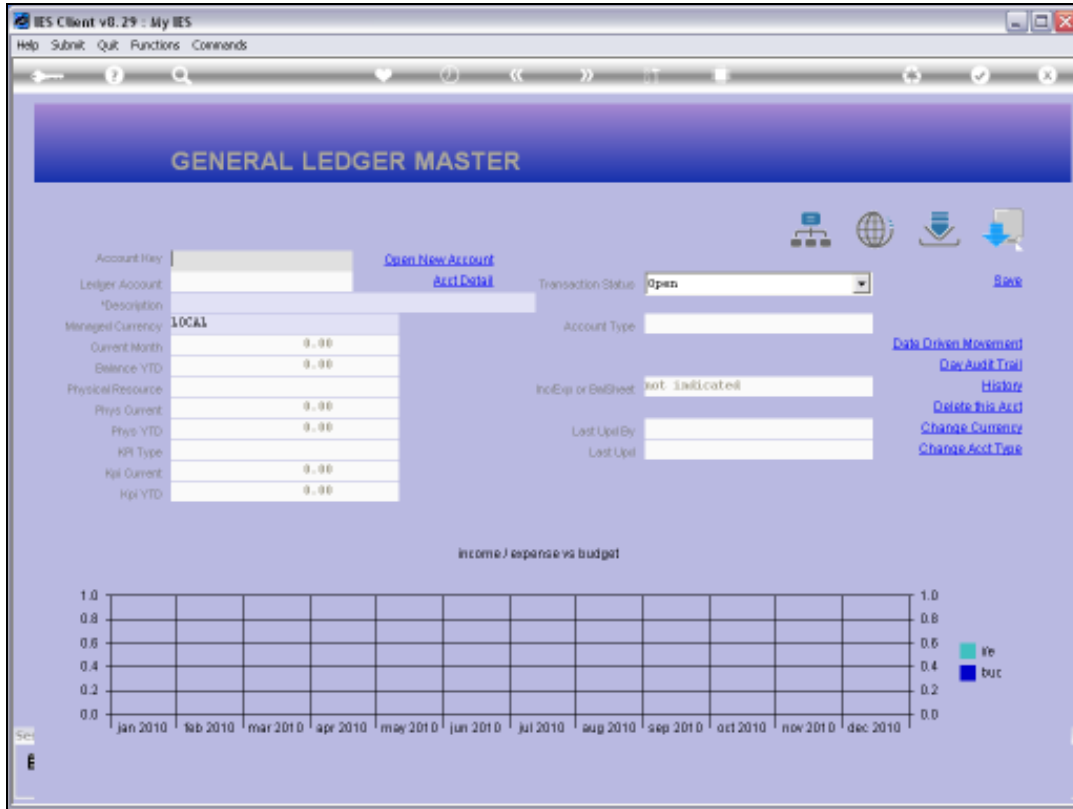
Slide 2  
Slide notes:



Slide 3  
Slide notes:



Slide 4  
Slide notes:



Slide 5  
Slide notes:

Account Key:  [Open New Account](#)

Ledger Account:  [Acct Detail](#)

Transaction Status:  [Save](#)

Managed Currency: LOCAL

Current Month	0.00
Balance YTD	0.00
Physical Resource	
Phys Current	0.00
Phys YTD	0.00
Hpl Current	0.00
Hpl YTD	0.00

Account Type:

Inc/Exp or BalSheet:

Last Upd By:

Last Upd:

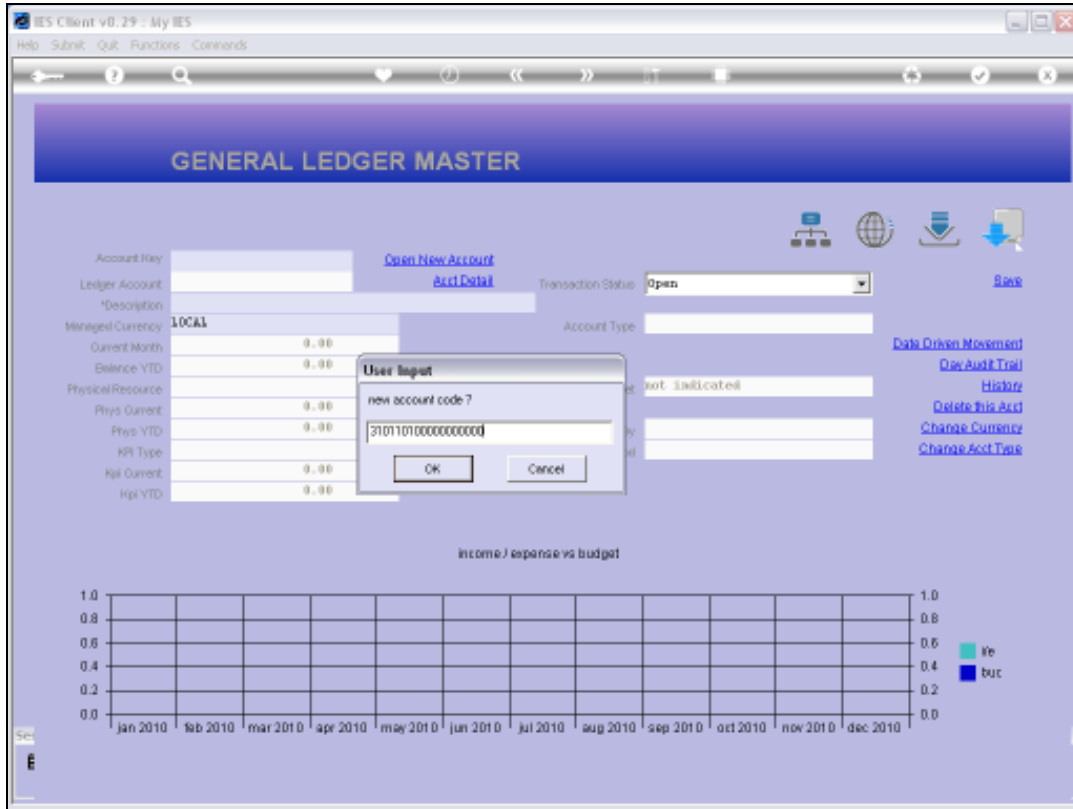
[Data Origin Movement](#)  
[Doc Audit Trail](#)  
[History](#)  
[Delete This Acct](#)  
[Change Currency](#)  
[Change Acct Type](#)

income / expense vs budget

1.0													1.0
0.8													0.8
0.6													0.6
0.4													0.4
0.2													0.2
0.0													0.0
	Jan 2010	Feb 2010	Mar 2010	Apr 2010	May 2010	Jun 2010	Jul 2010	Aug 2010	Sep 2010	Oct 2010	Nov 2010	Dec 2010	

inc  
buc

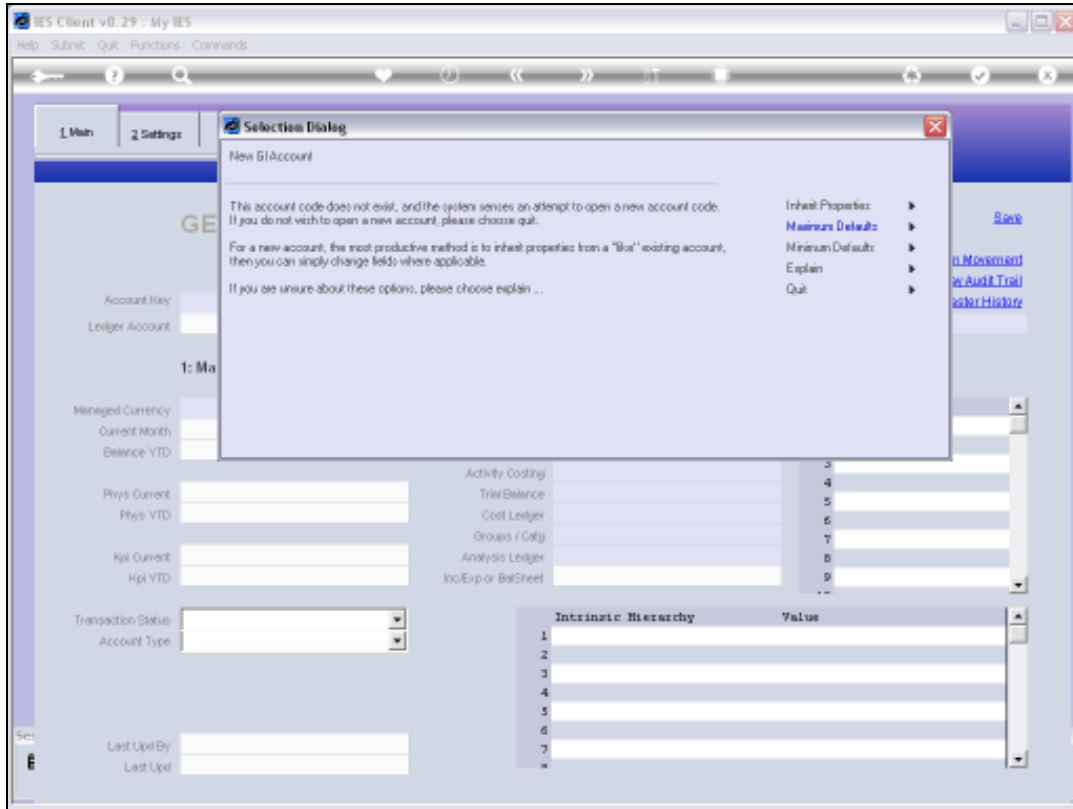
Slide 6  
Slide notes:



Slide 7  
Slide notes:

Slide 8  
Slide notes:





Slide 9  
Slide notes:

Account Key: 310110100000000000  
 Ledger Account: 3101101-00-0000-00000  
 Description: new account

**1: Main Settings**

Managed Currency	LOCAL
Current Month	0.00
Balance YTD	0.00
Phys Current	0.00
Phys YTD	0.00
Kpi Current	0.00
Kpi YTD	0.00

Transaction Status: open  
 Account Type: 1: ledger only

**2: Management Reporting Hierarchy**

Report Type	Value
Balance Sheet	
Income Statement	
Department	
Activity Costing	
Trial Balance	
Cost Ledger	
Groups / Catg	
Analysis Ledger	
Inc/Exp or BalSheet	not indicated

**Custom Groups**

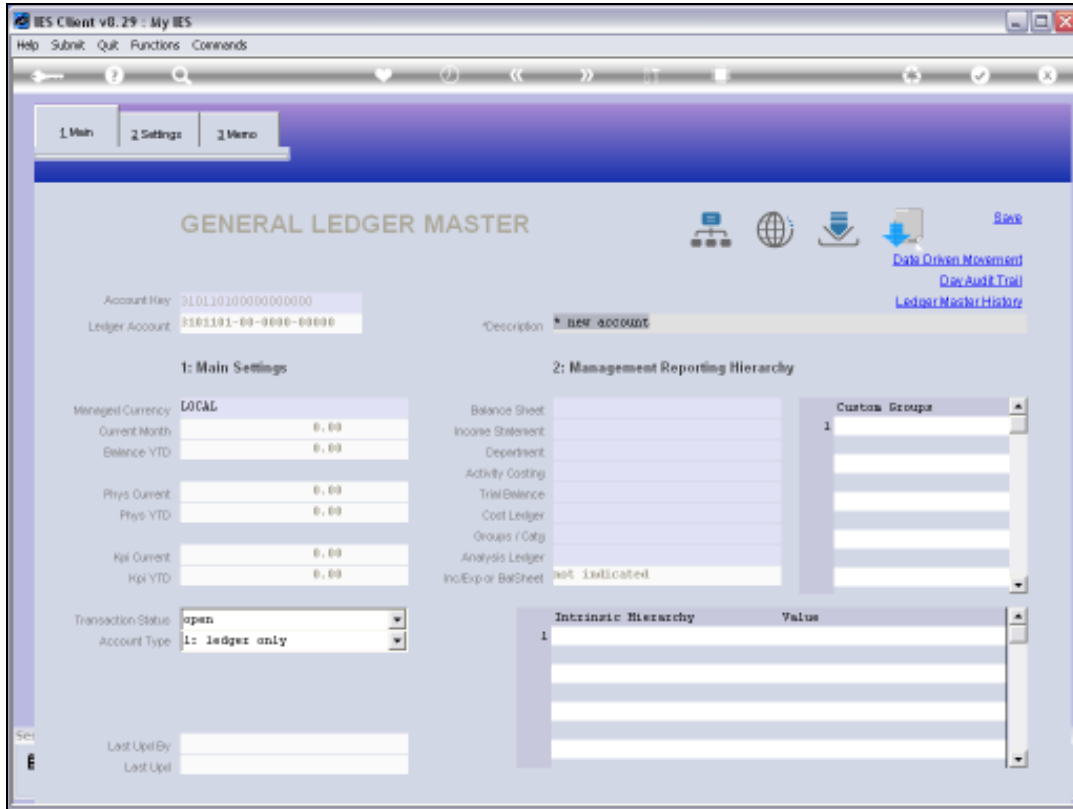
Group	Value
1	

**Intrinsic Hierarchy**

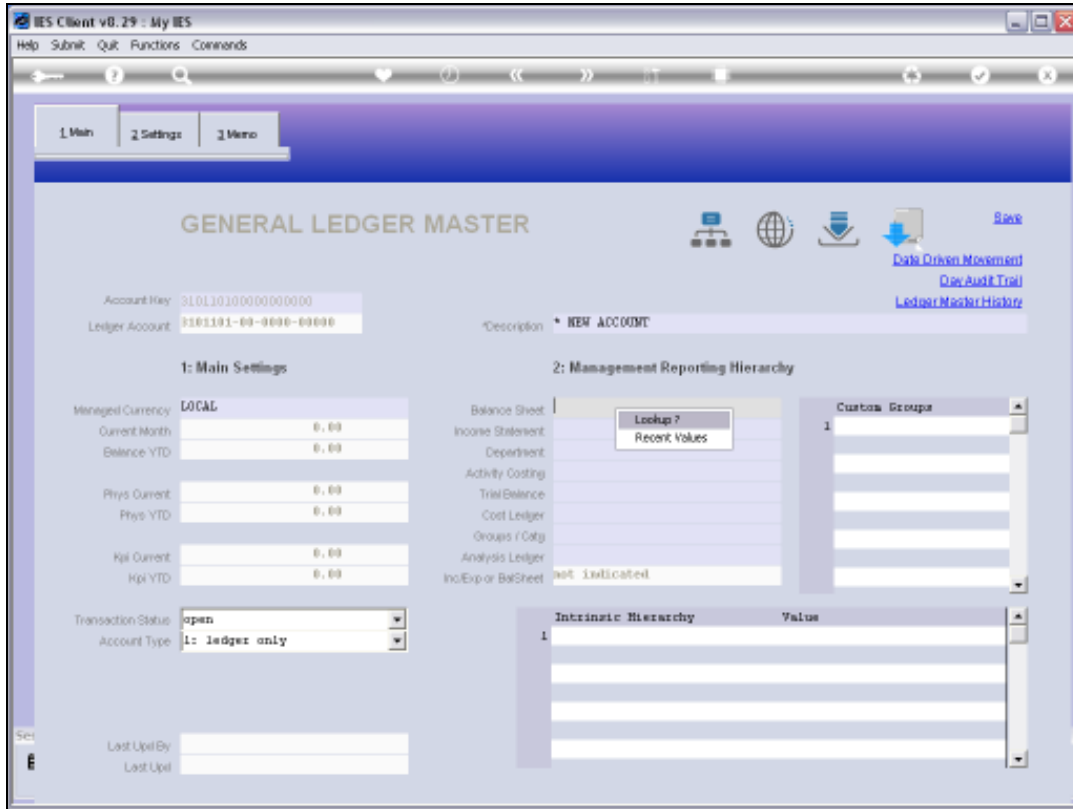
Group	Value
1	

## Slide 10

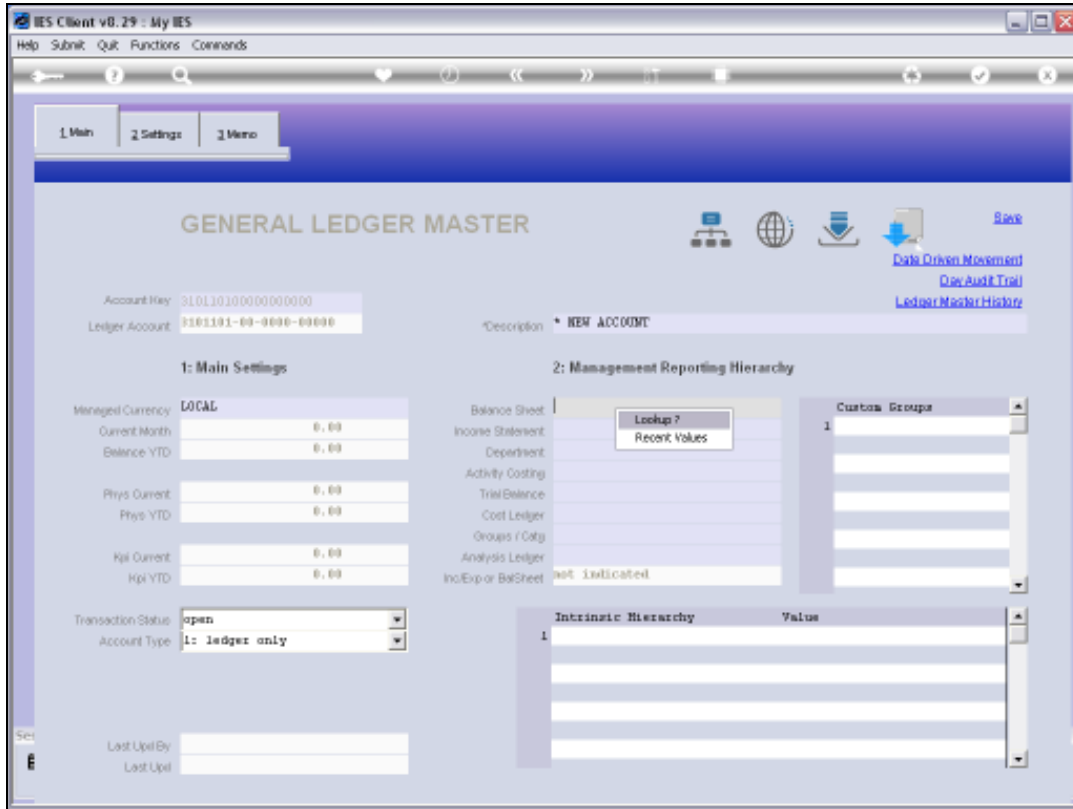
Slide notes: If we attempt to open an Account, the system recognizes the structure of the current Ledger, but we cannot create a new Account until we fill in some Report Flags, and there are none.



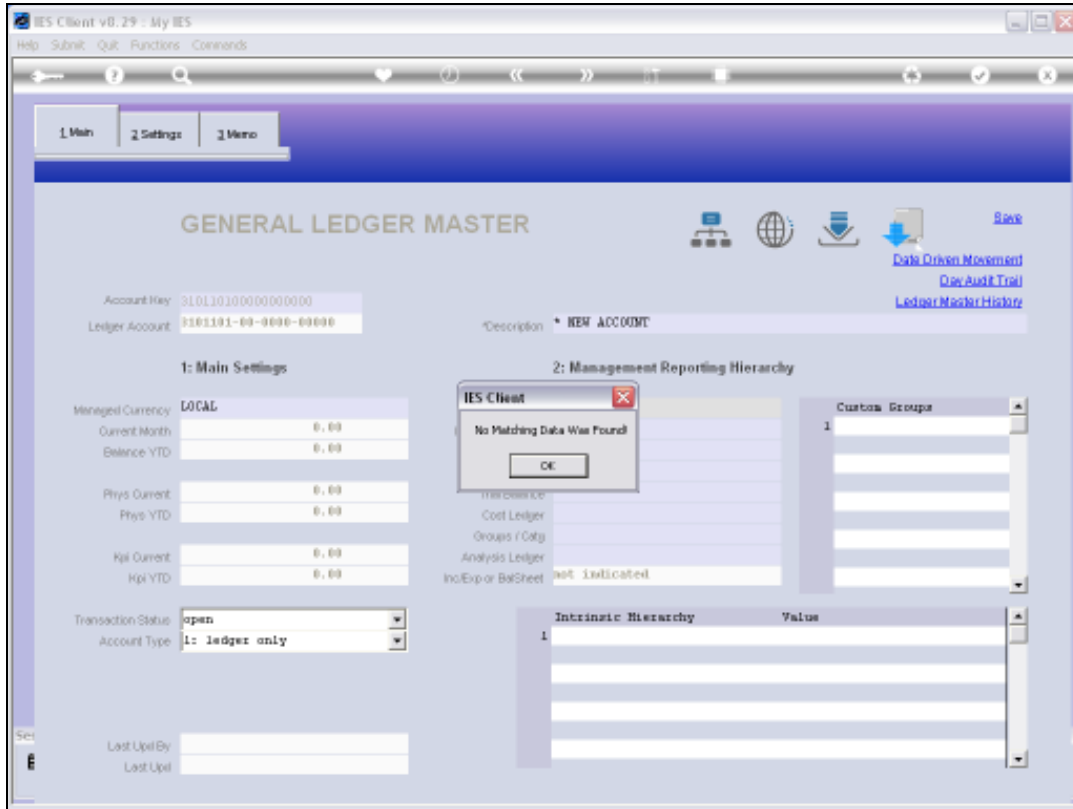
Slide 11  
Slide notes:



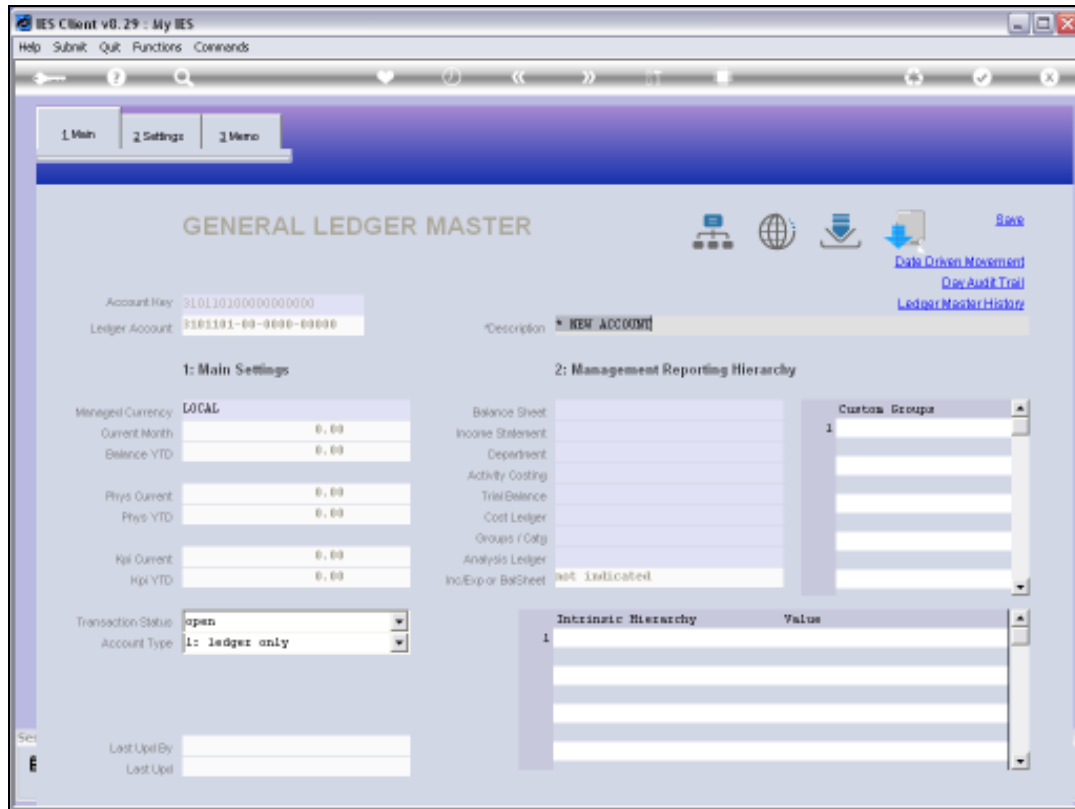
Slide 12  
Slide notes:



Slide 13  
Slide notes:

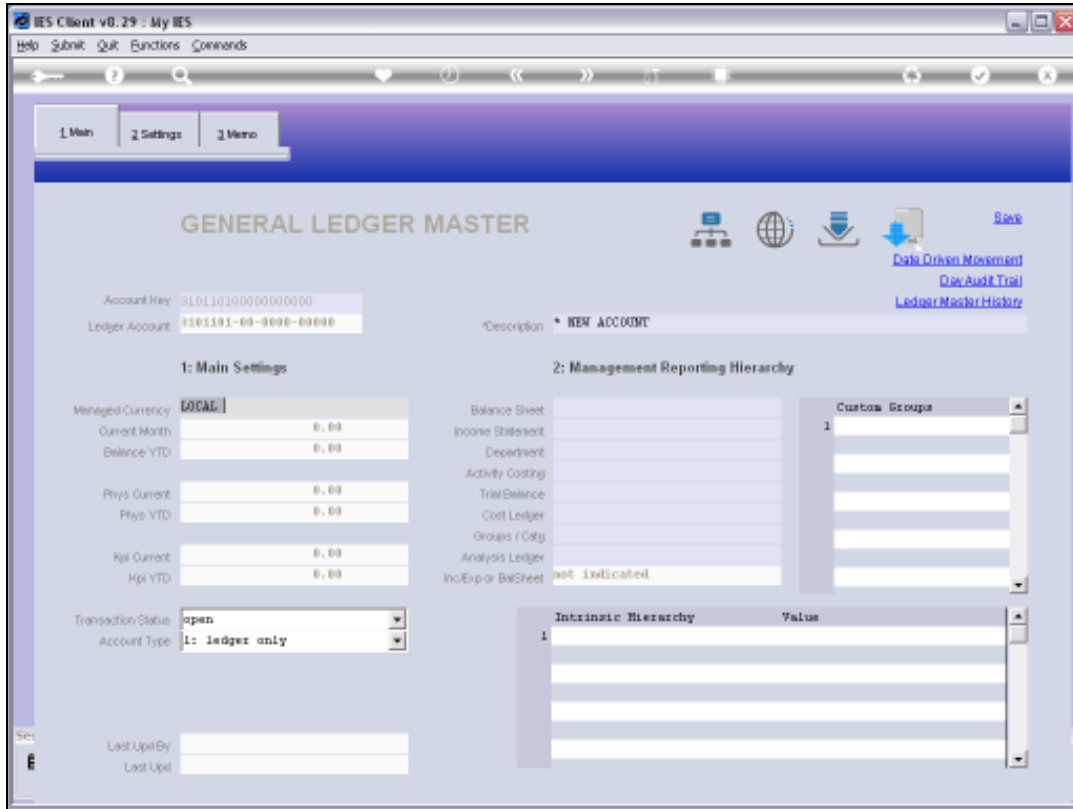


Slide 14  
Slide notes:



Slide 15

Slide notes: Therefore, we note that it is essential to have some Report Flags before we open the 1st Account, even if we just use basis Flags and do the Detail Flags later.



Slide 16  
Slide notes: