

Slide 1

Slide notes: Master Account Enquiries can be performed from the Ledger Enquiries menu.



Slide 2
Slide notes:



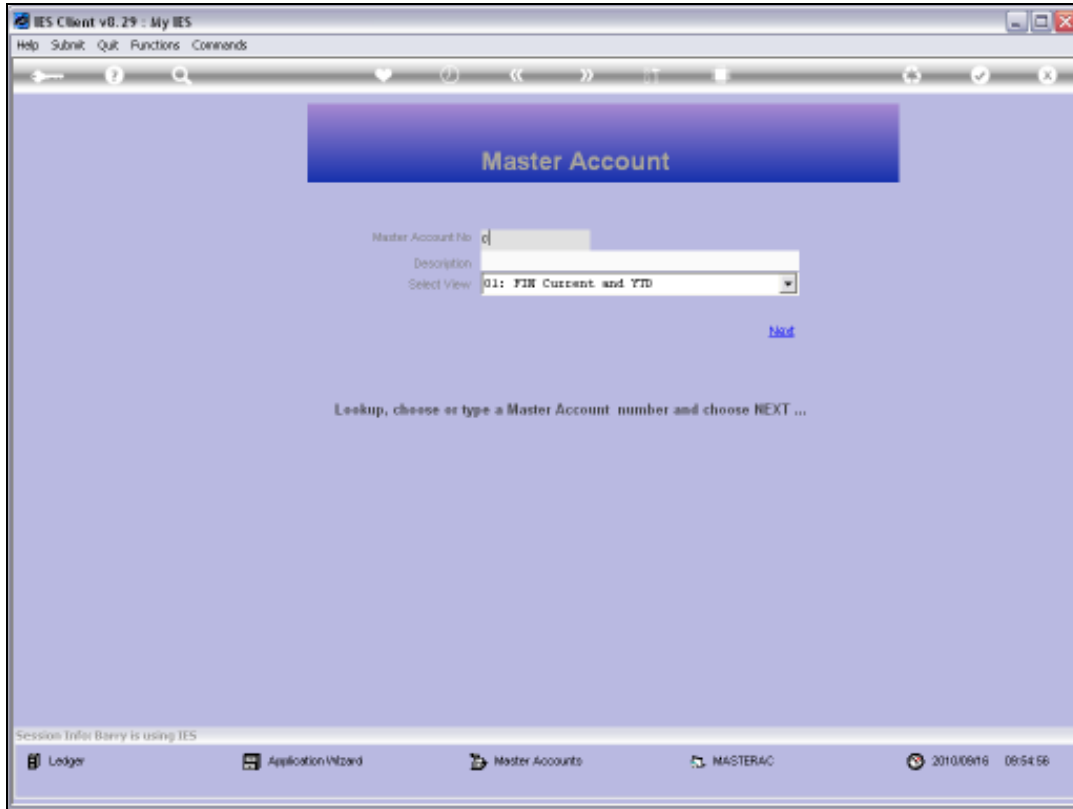
Slide 3

Slide notes:

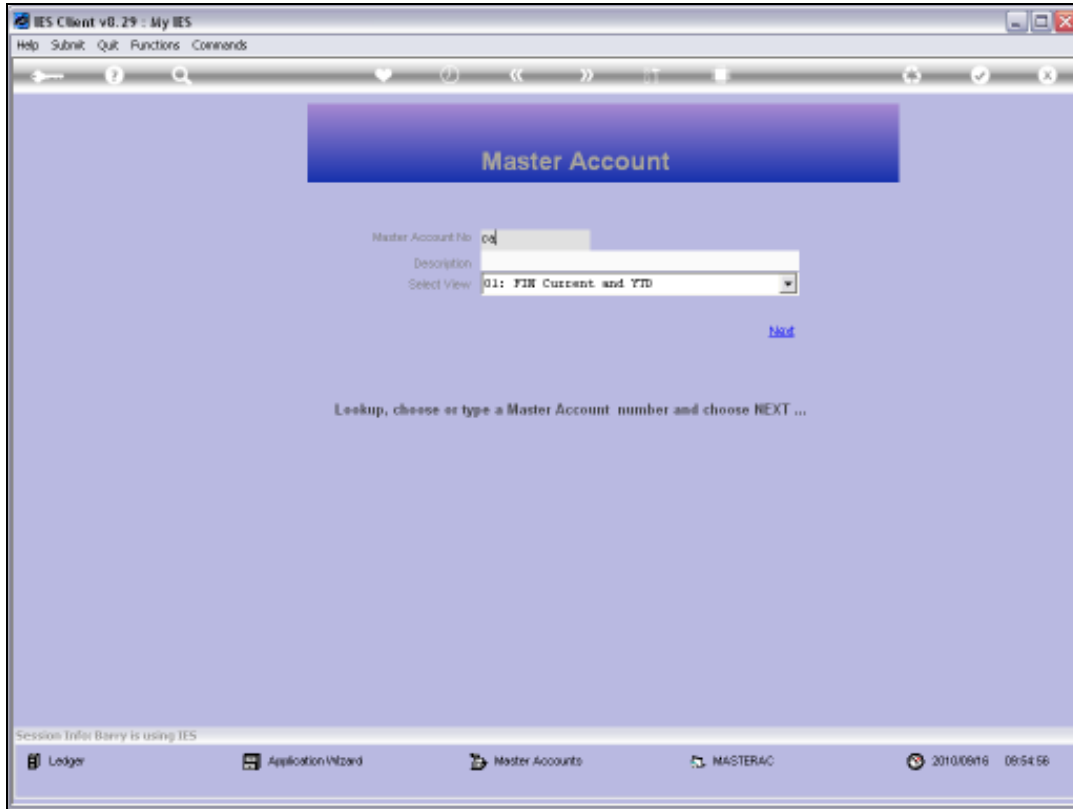


Slide 4

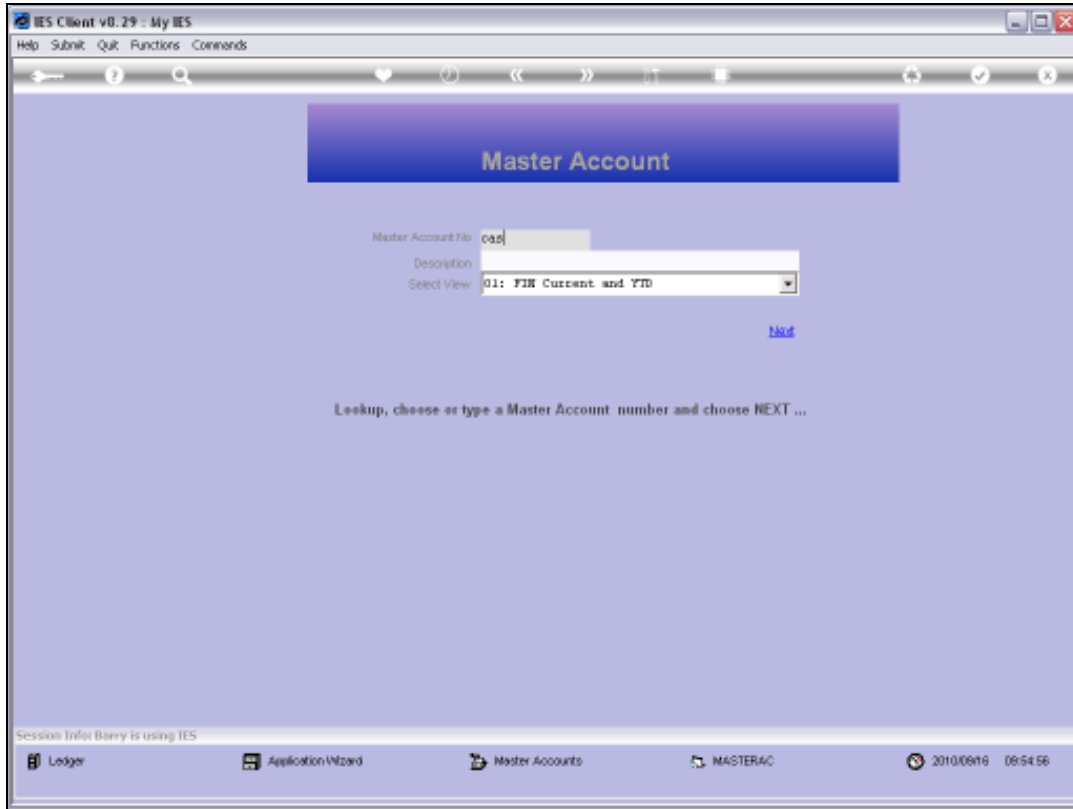
Slide notes: The usual lookups are available to select a Master Account.



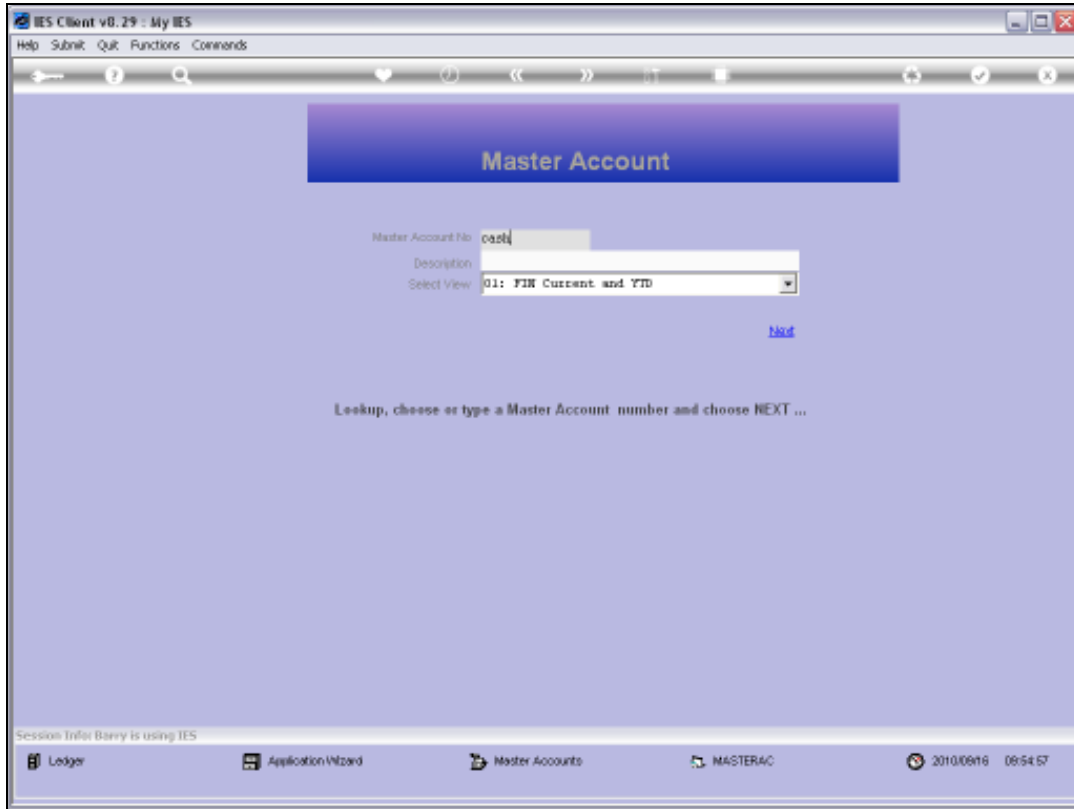
Slide 5
Slide notes:



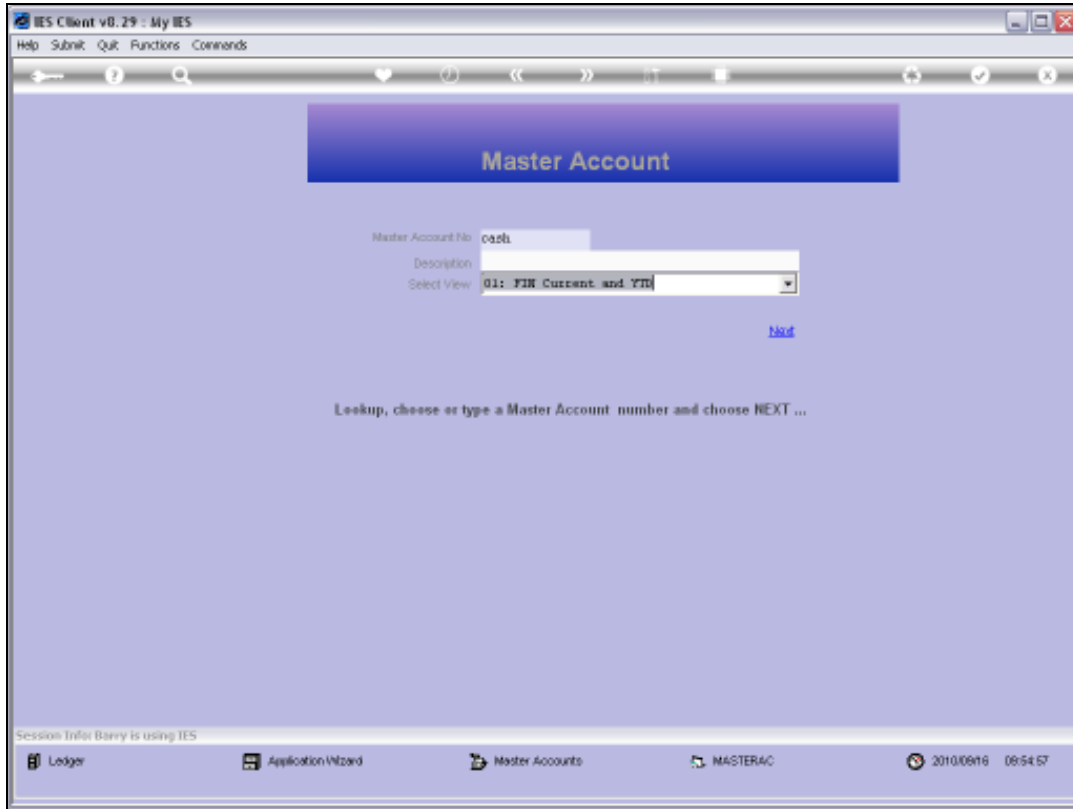
Slide 6
Slide notes:



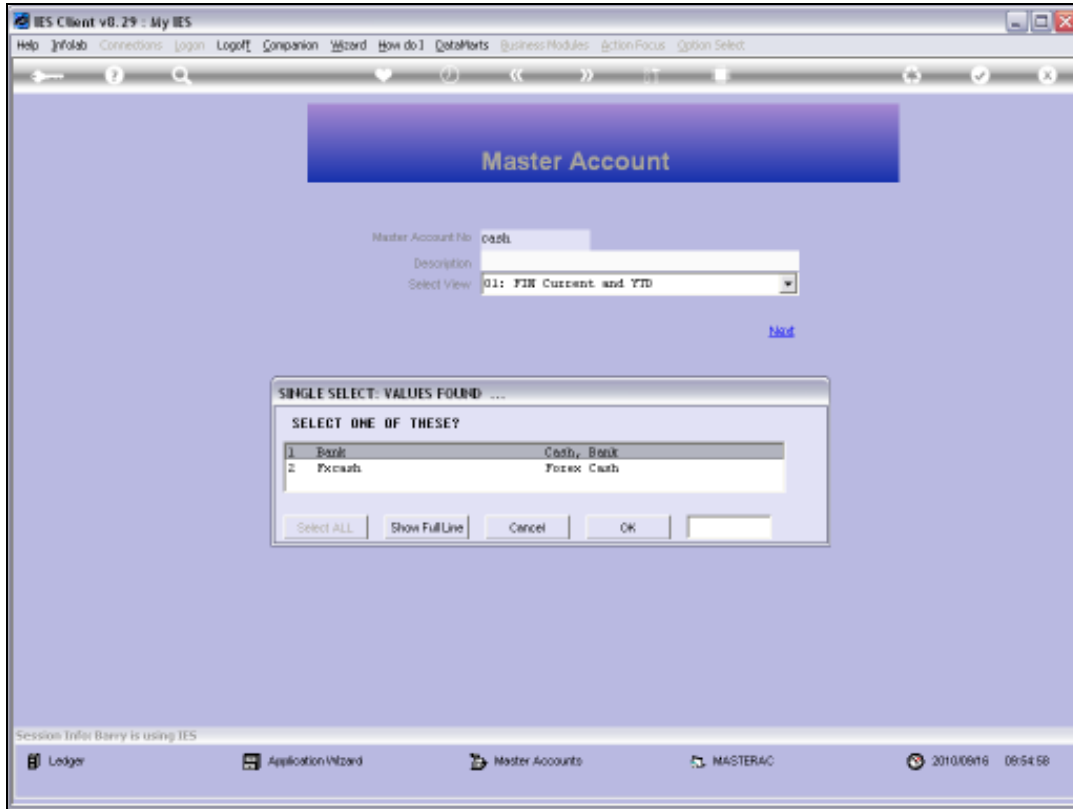
Slide 7
Slide notes:



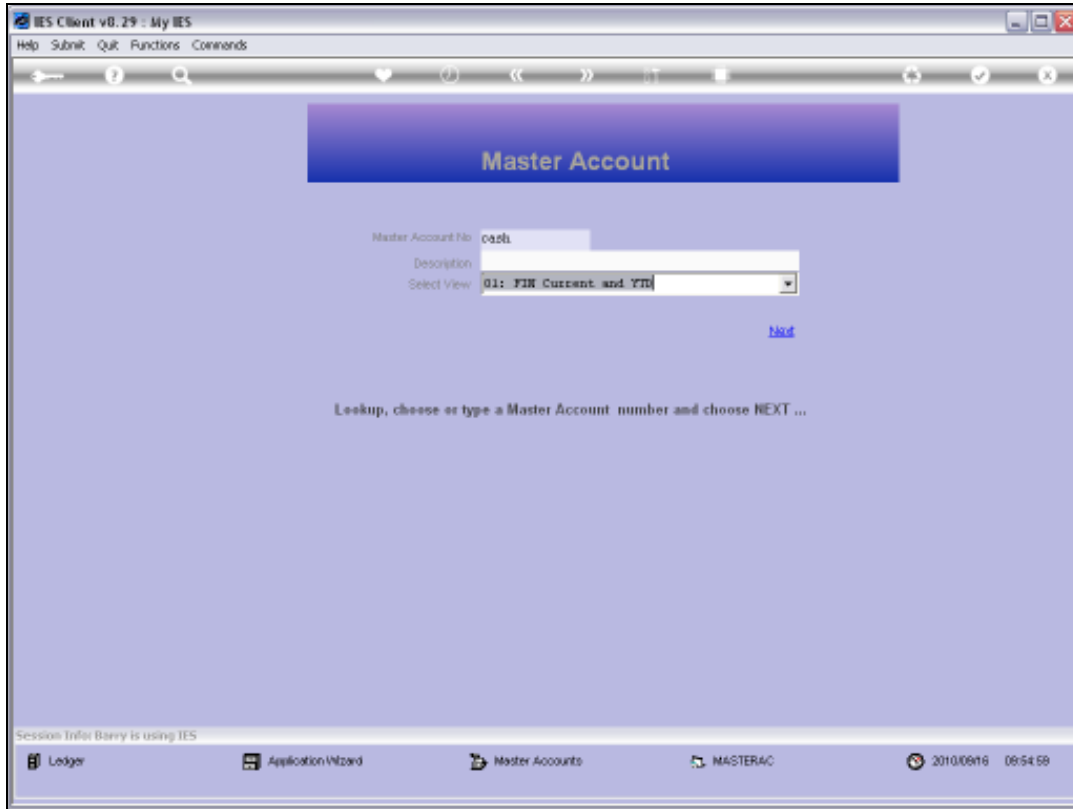
Slide 8
Slide notes:



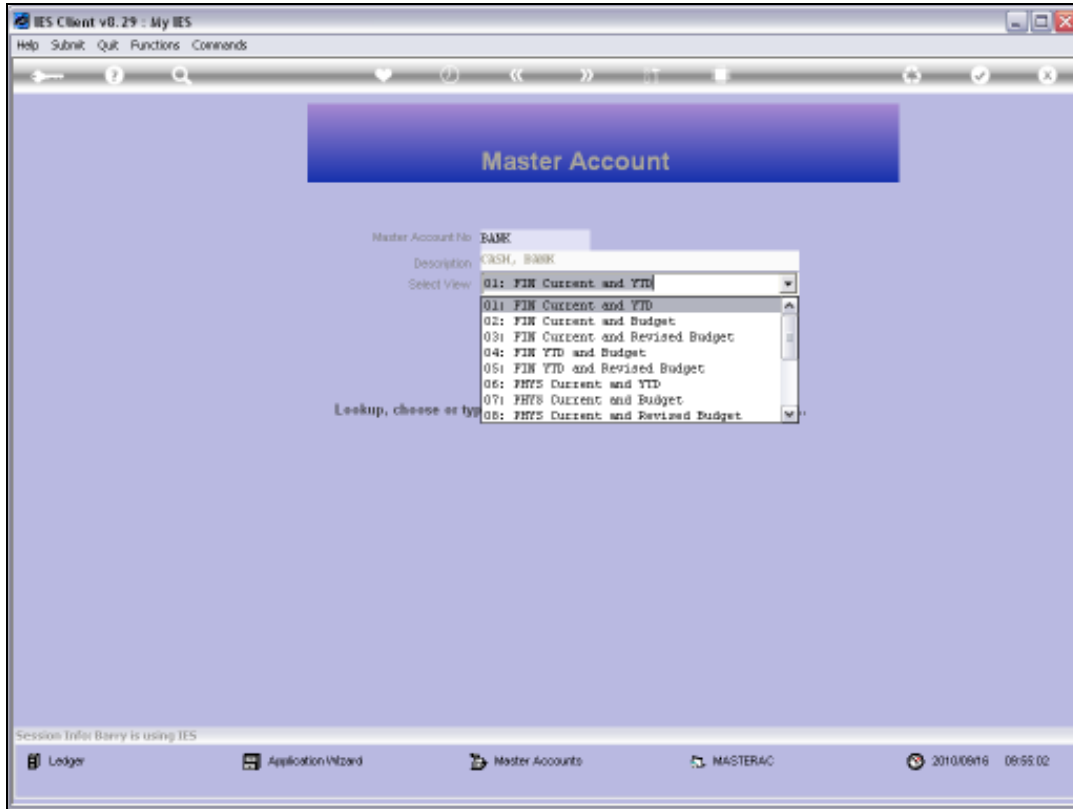
Slide 9
Slide notes:



Slide 10
Slide notes:

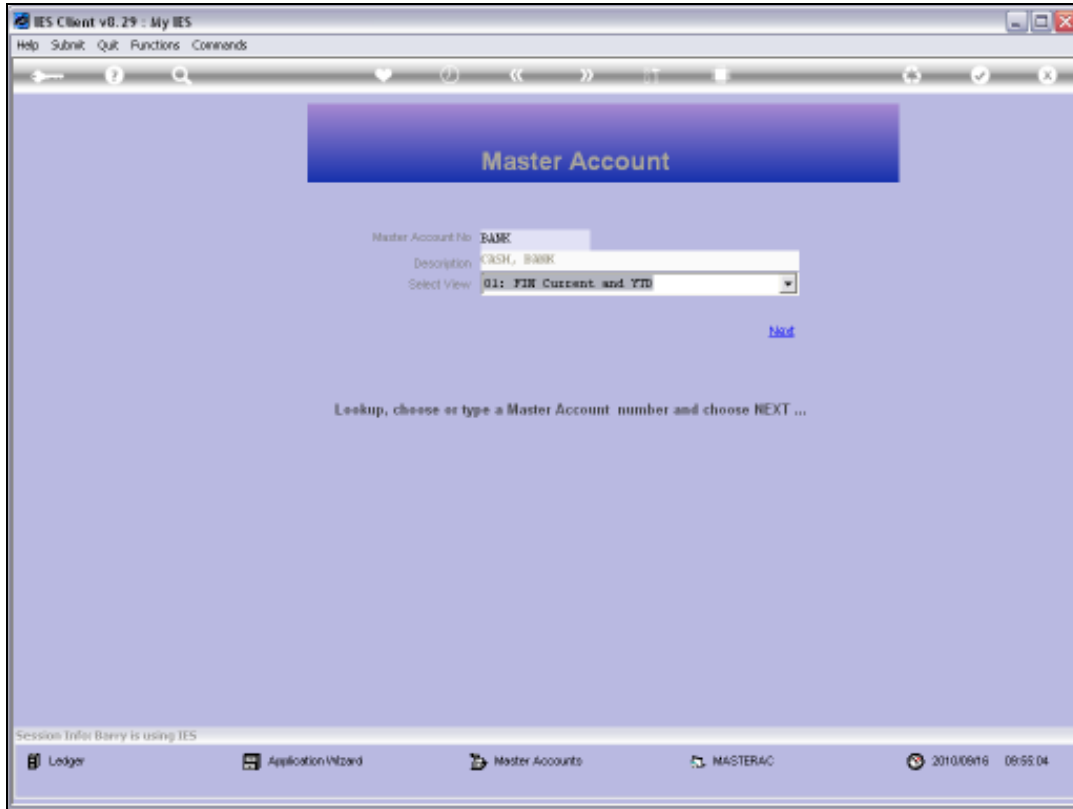


Slide 11
Slide notes:



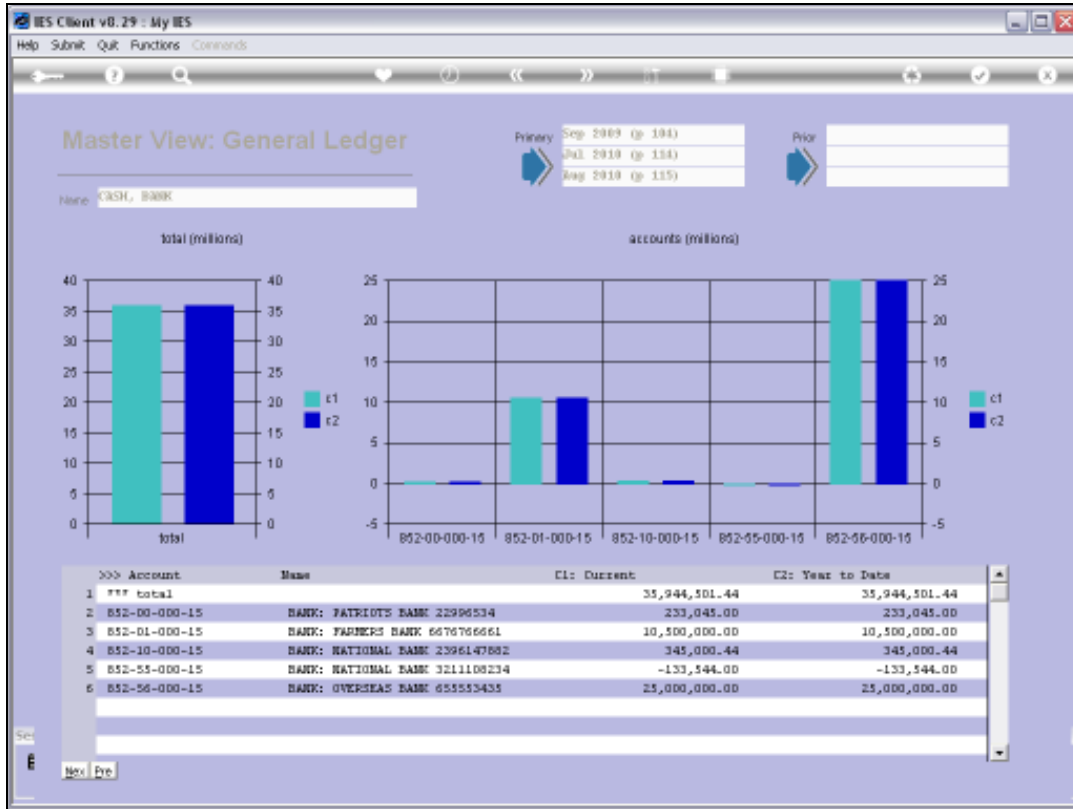
Slide 12

Slide notes: A view may be selected from the available options.



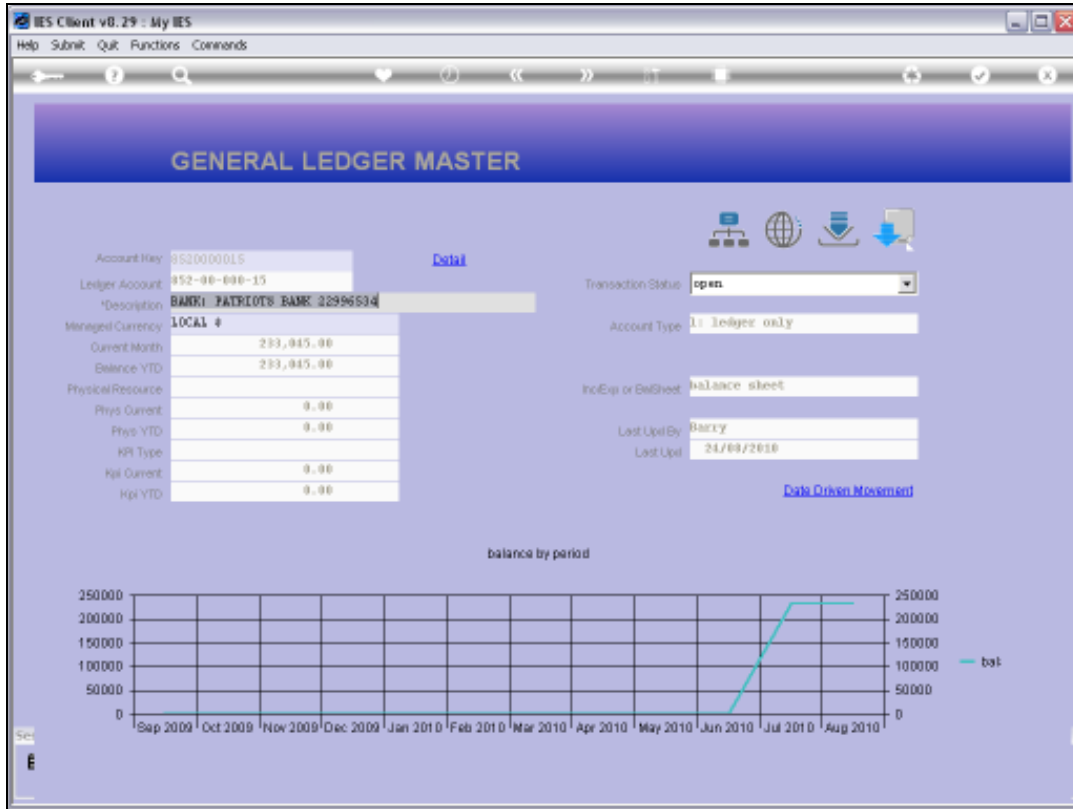
Slide 13

Slide notes:



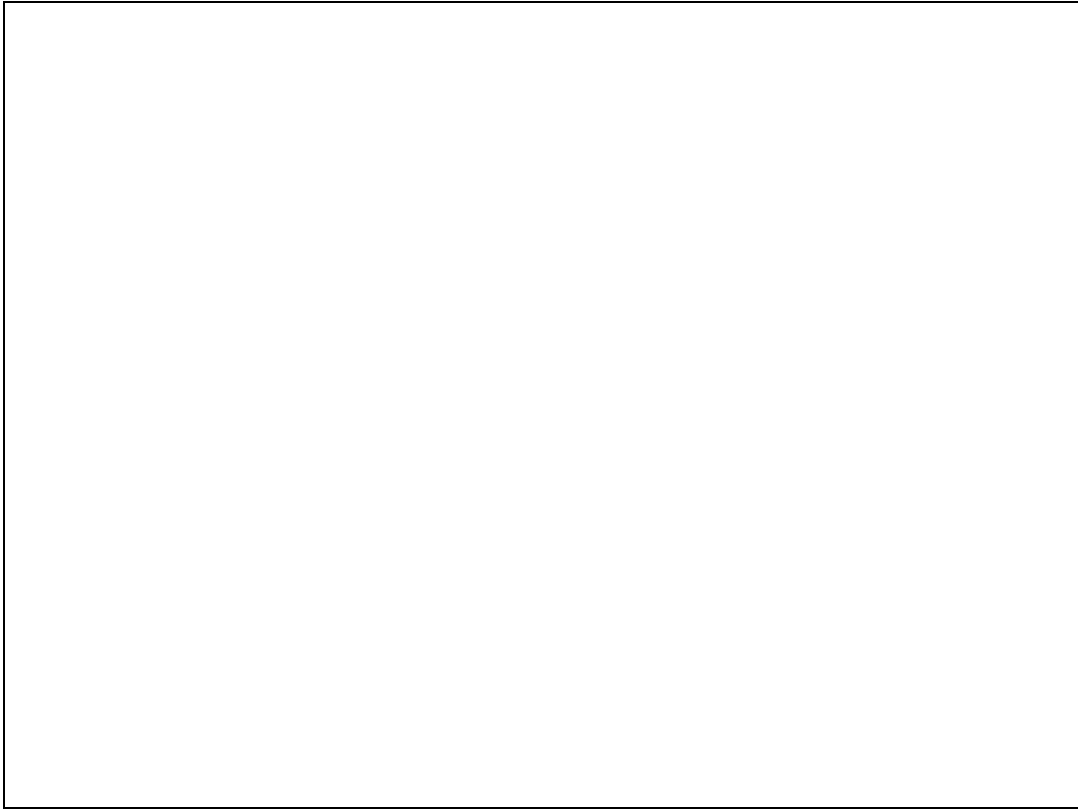
Slide 14

Slide notes: A Master Account always includes at least 1 but usually more than 1 Ledger Accounts. On the list for this Master Account, we can see the Accounts that are included, and we can drill into any of them.



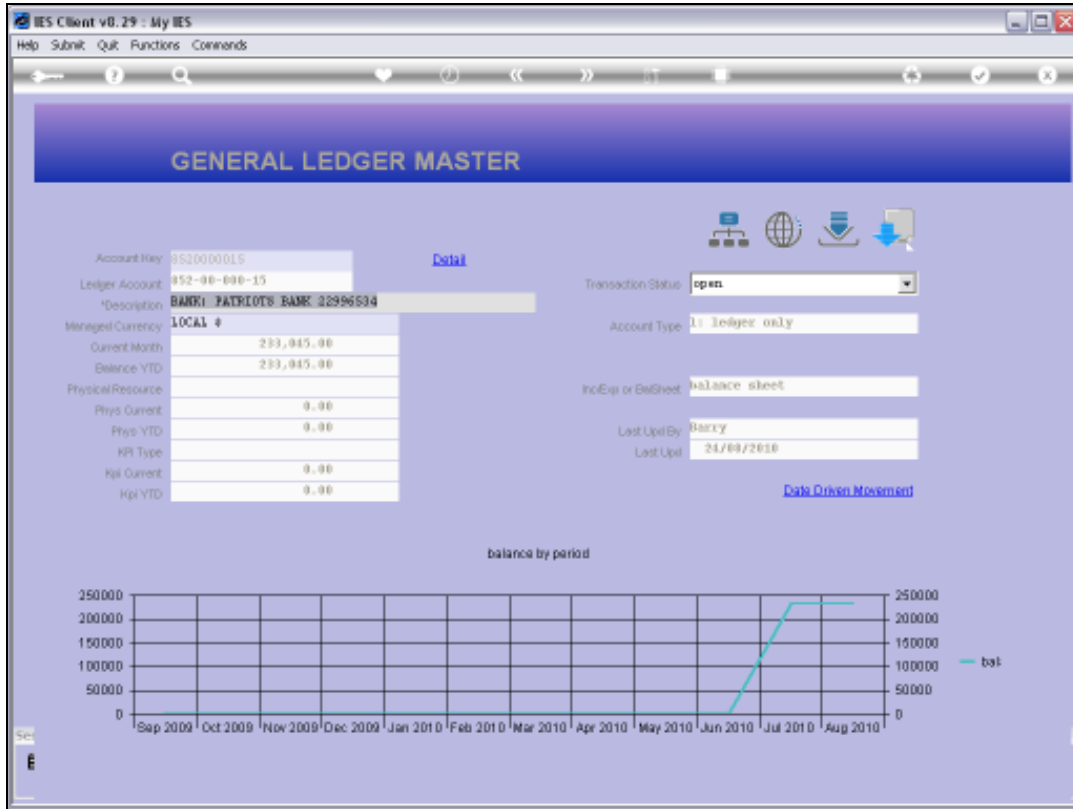
Slide 15

Slide notes: This brings us to a standard Ledger Enquiry on the drilled Account.

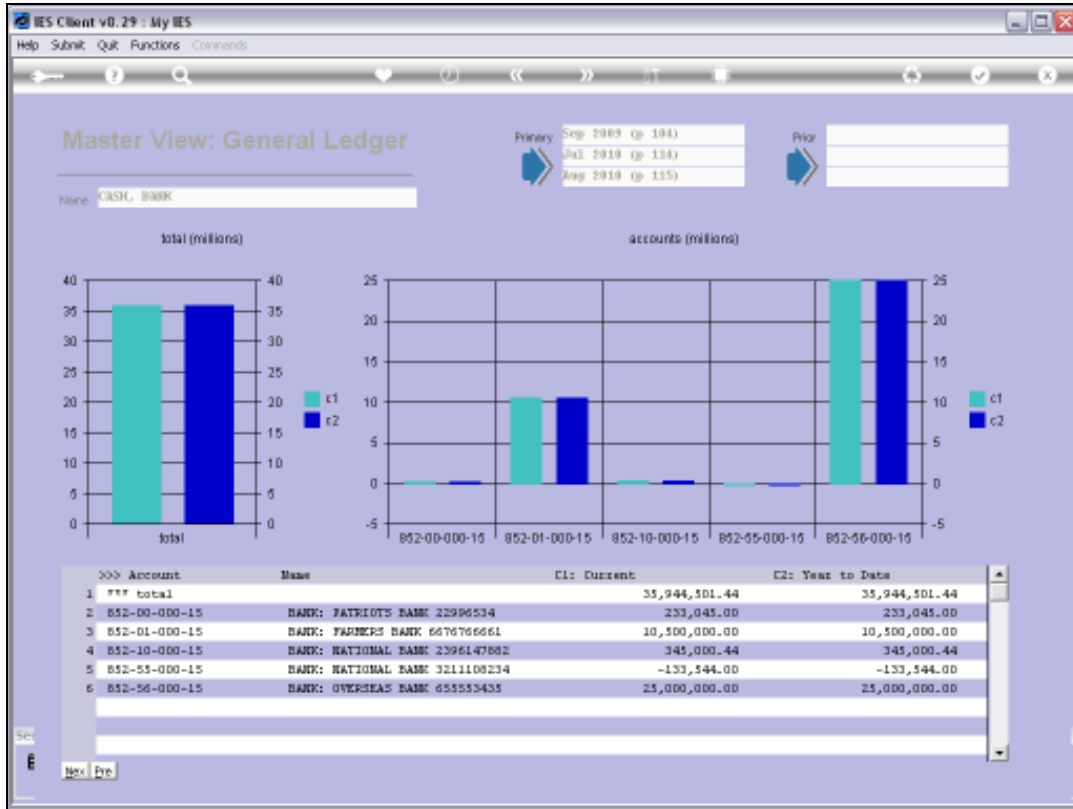


Slide 16

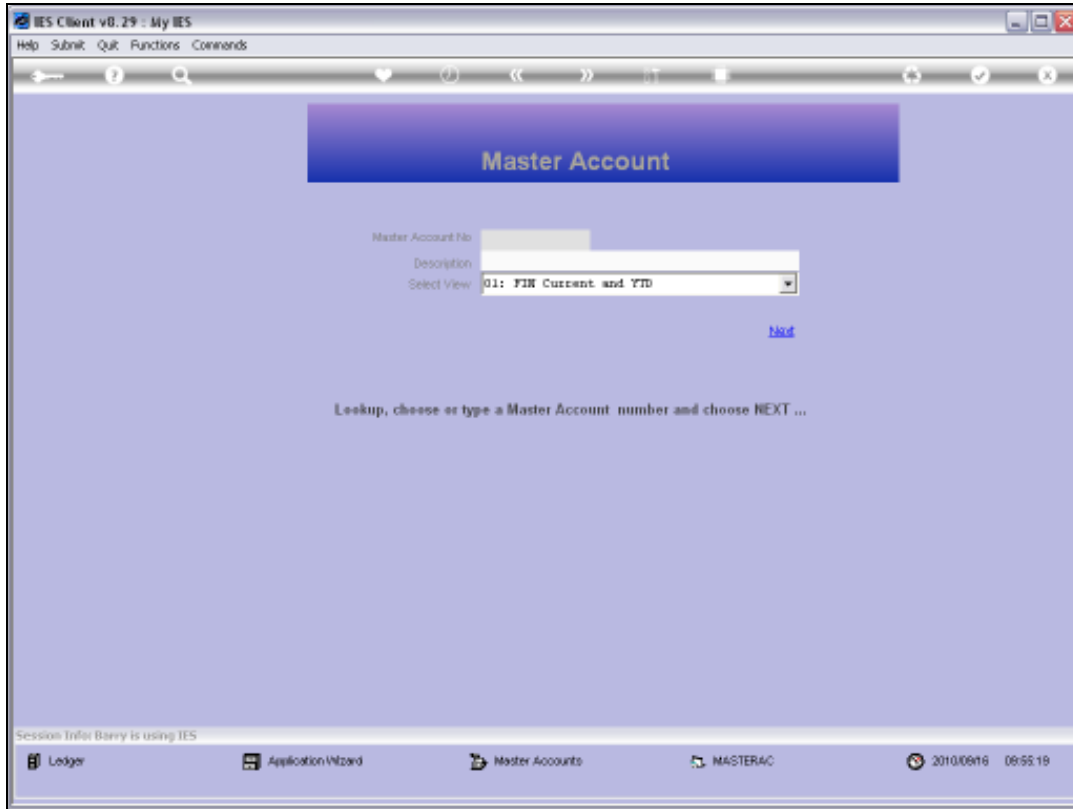
Slide notes:



Slide 17
Slide notes:



Slide 18
Slide notes:



Slide 19

Slide notes: