



Slide 1

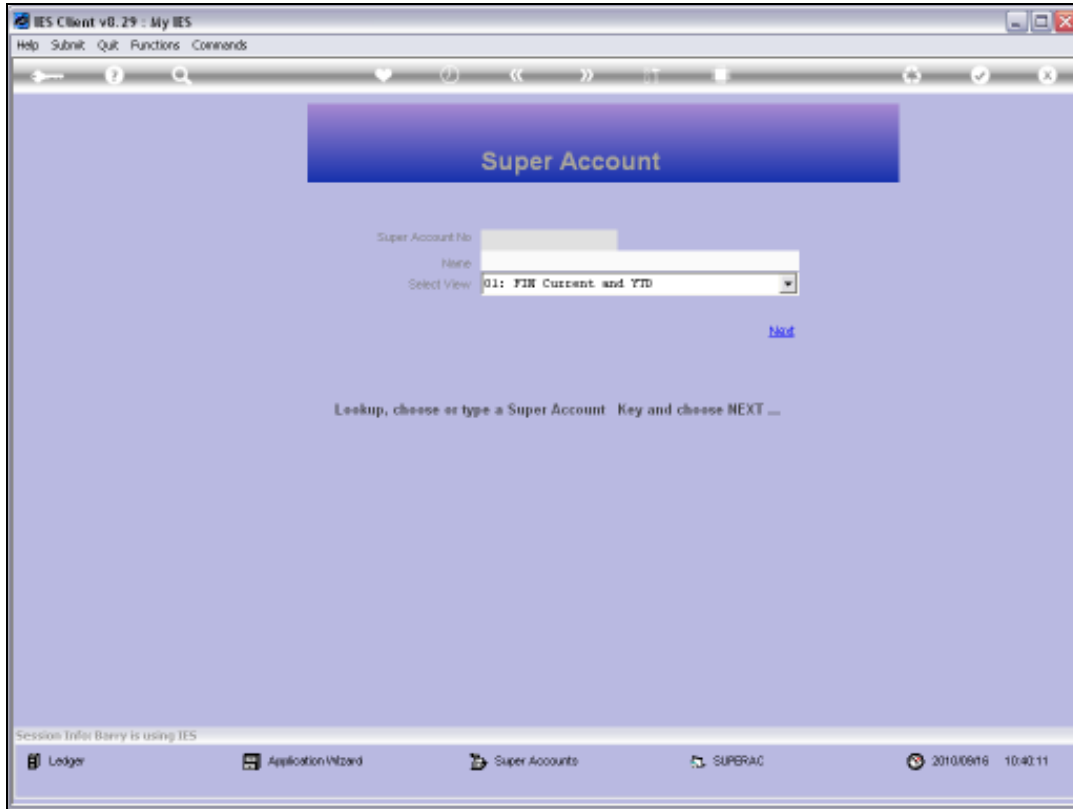
Slide notes: Enquiries on Super Accounts can be performed from the Ledger Enquiries menu.



Slide 2
Slide notes:

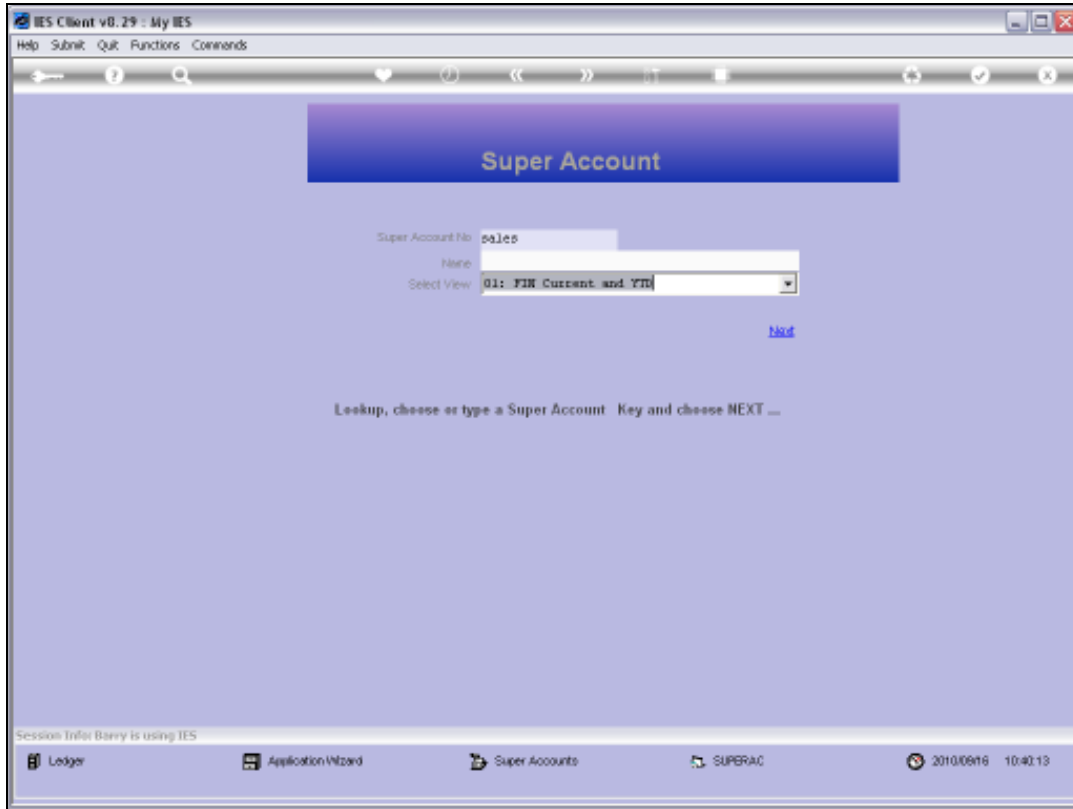


Slide 3
Slide notes:

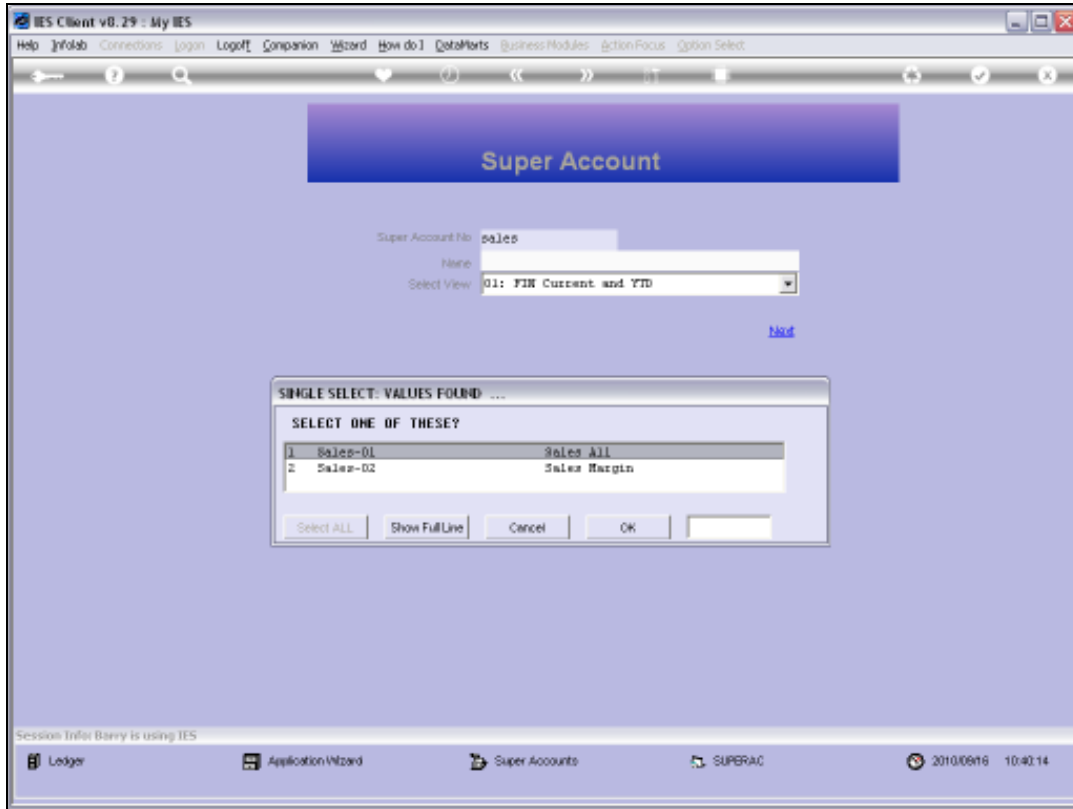


Slide 4

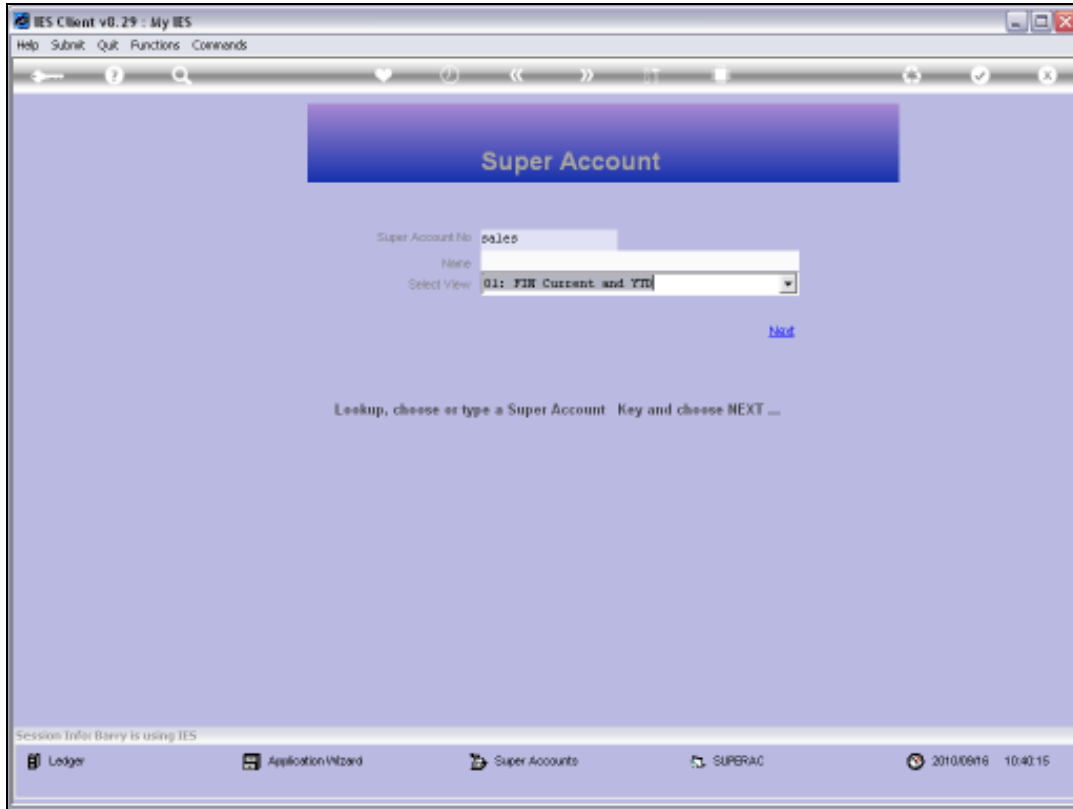
Slide notes: The usual lookups are available to select a Super Account.



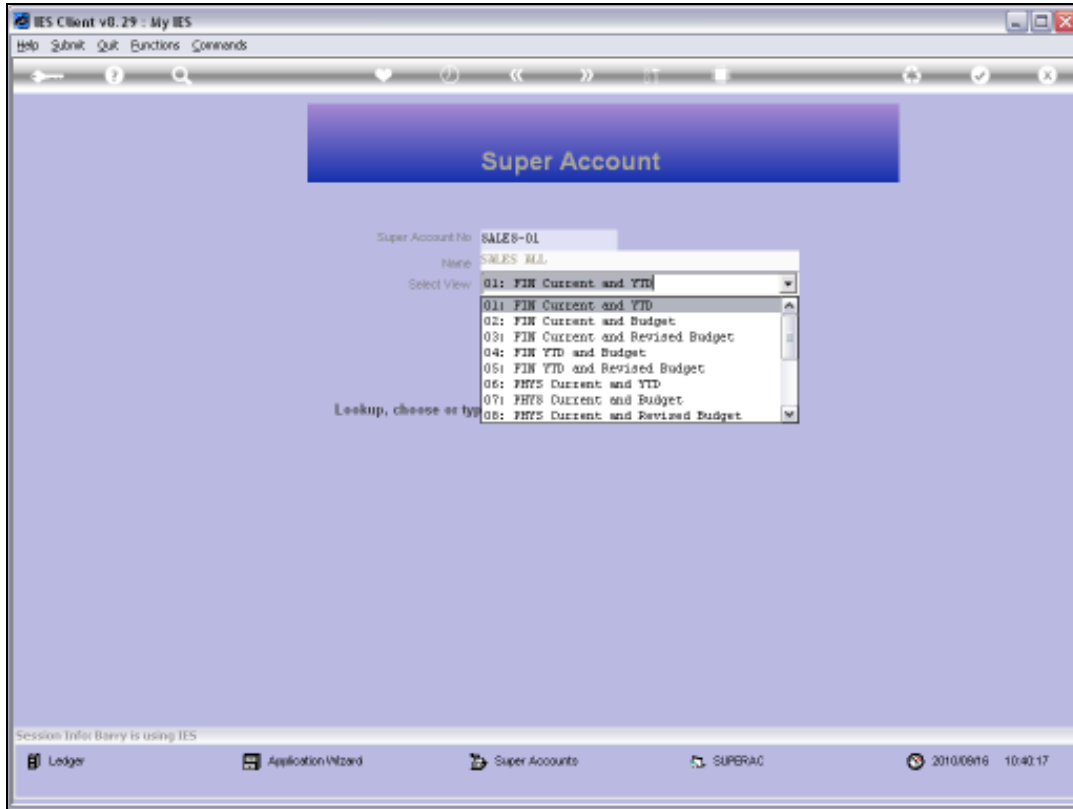
Slide 5
Slide notes:



Slide 6
Slide notes:

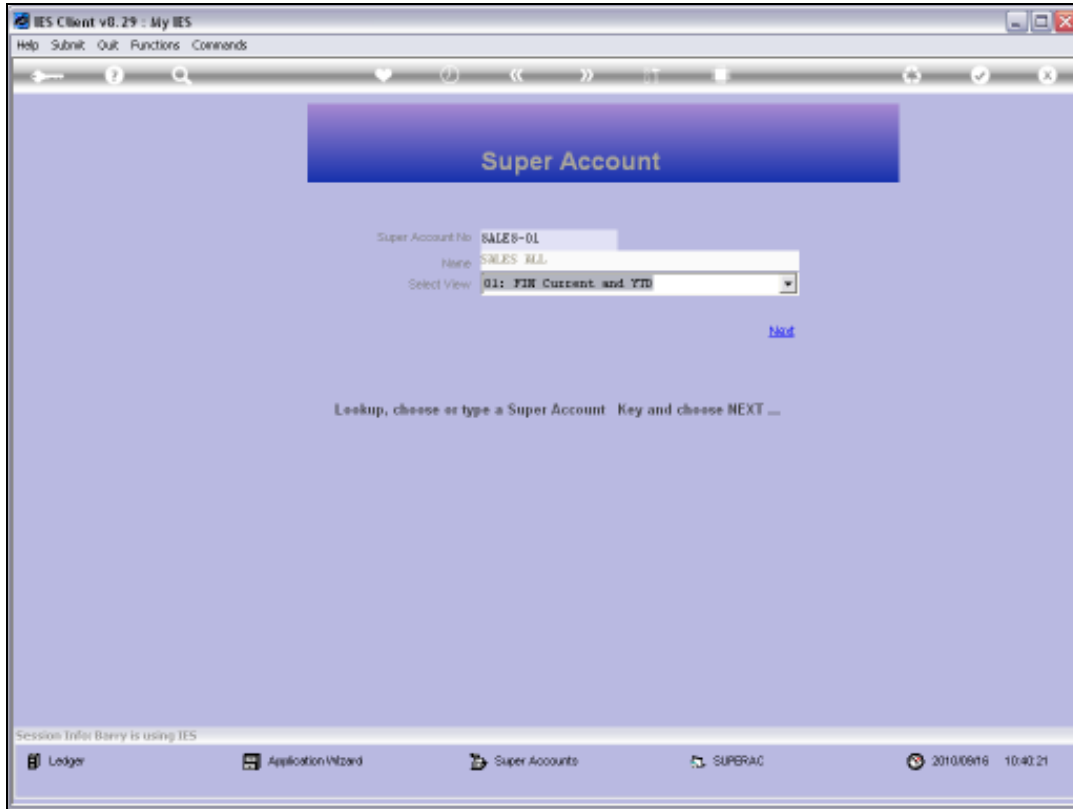


Slide 7
Slide notes:

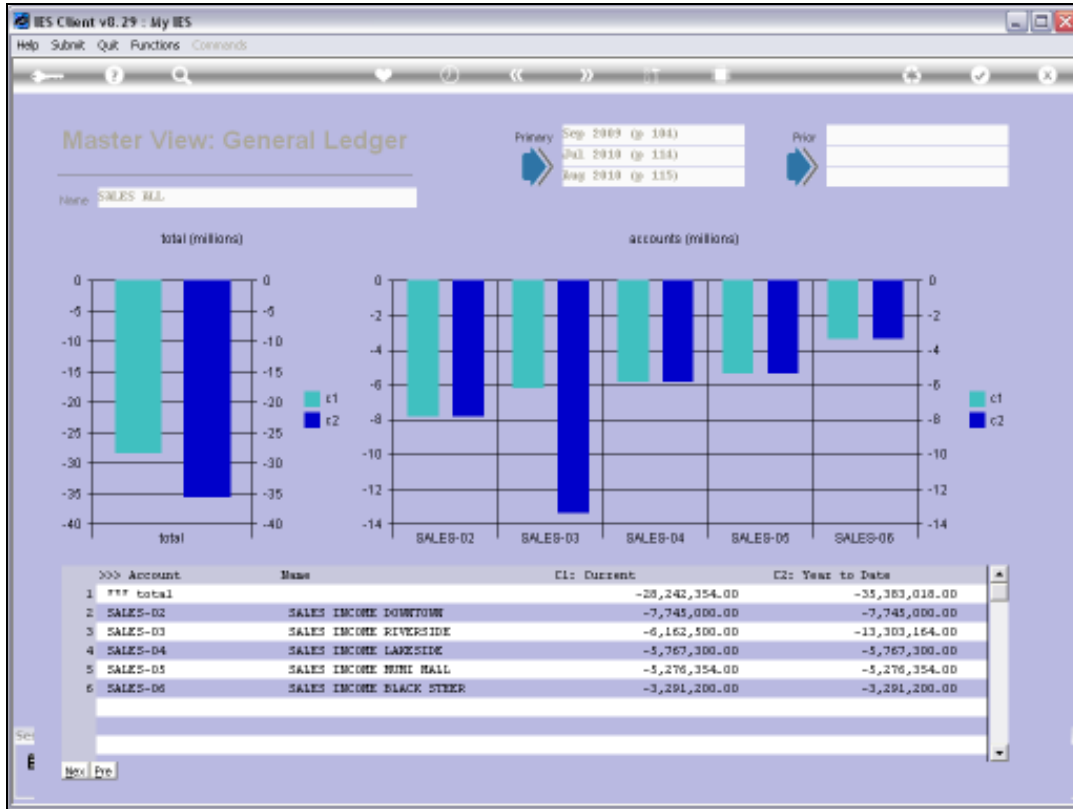


Slide 8

Slide notes: We can choose from the available views.

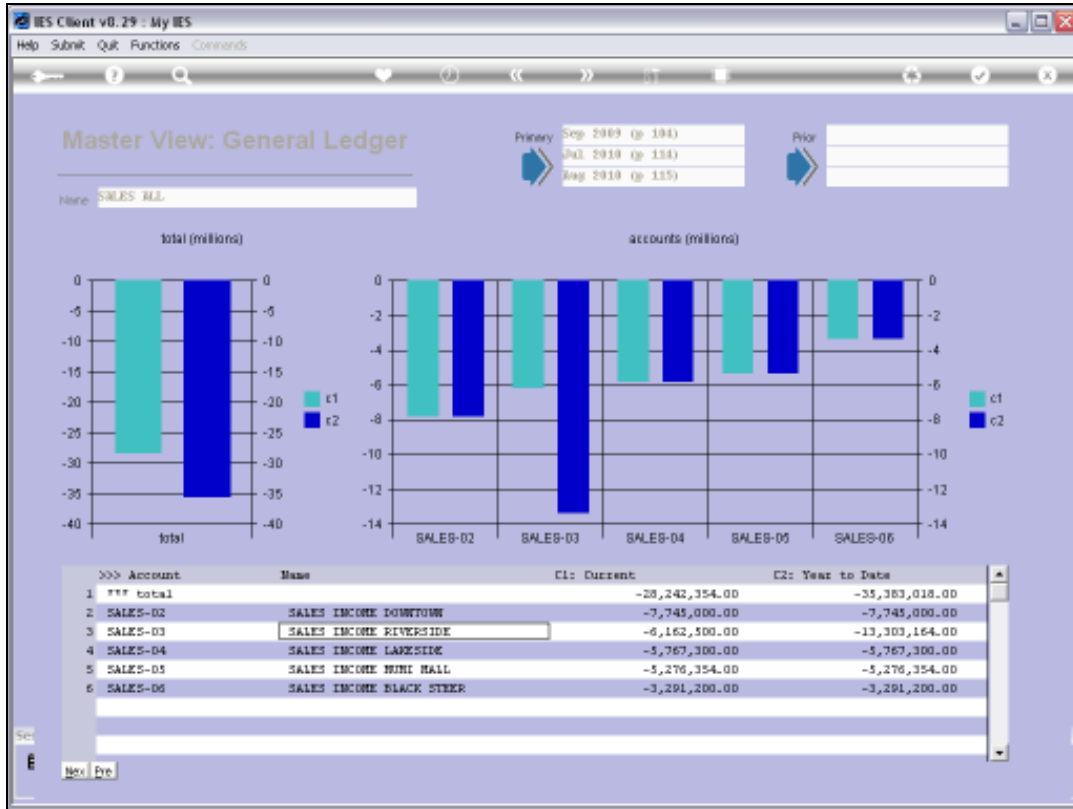


Slide 9
Slide notes:

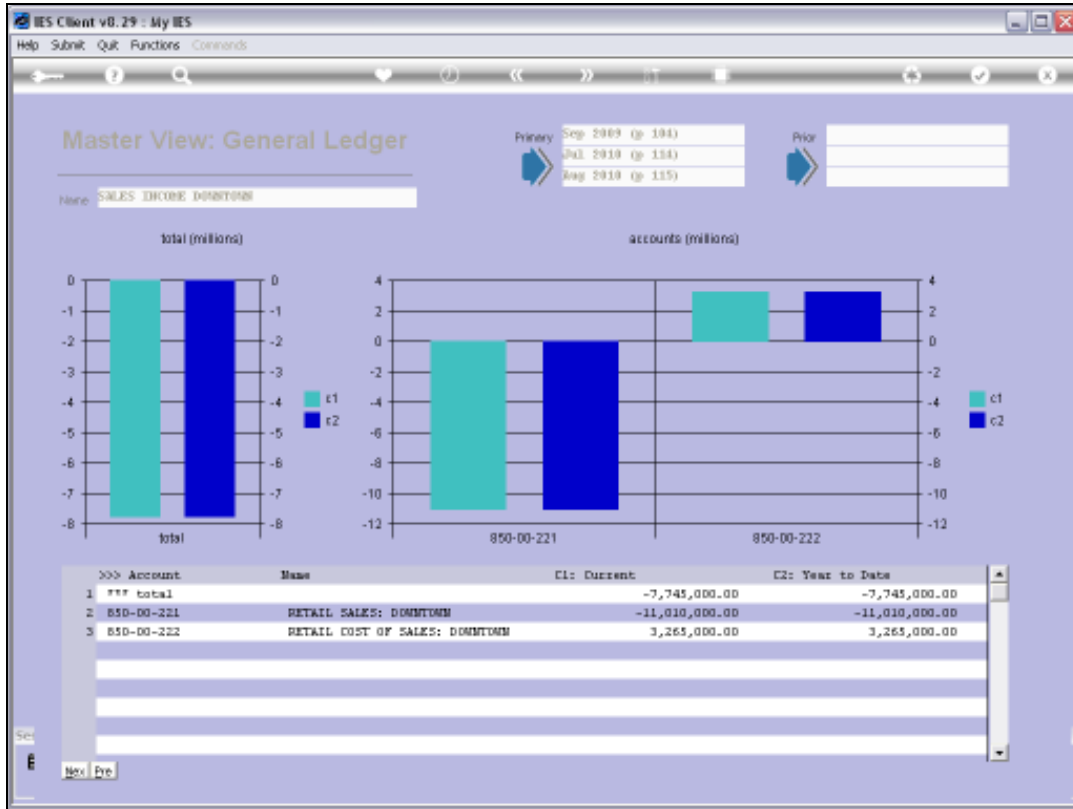


Slide 10

Slide notes: A Super Account View is always made up of the Master Accounts in the Super Account. Any listed Master View can be drilled.

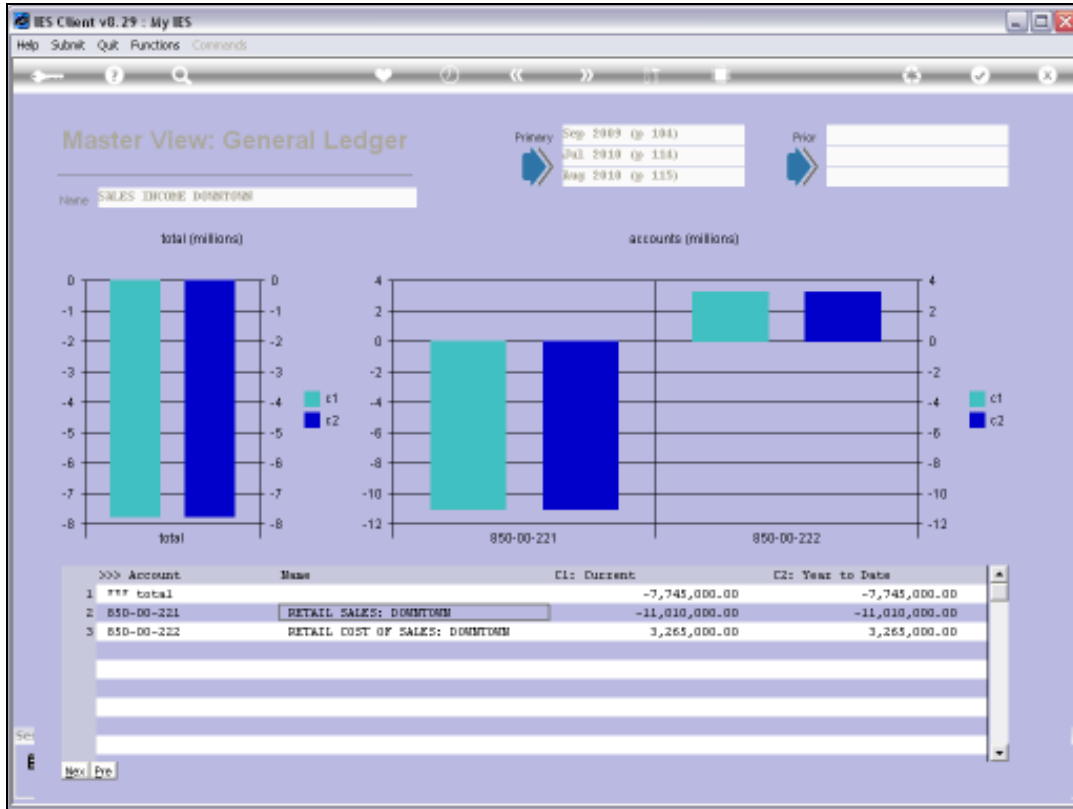


Slide 11
Slide notes:



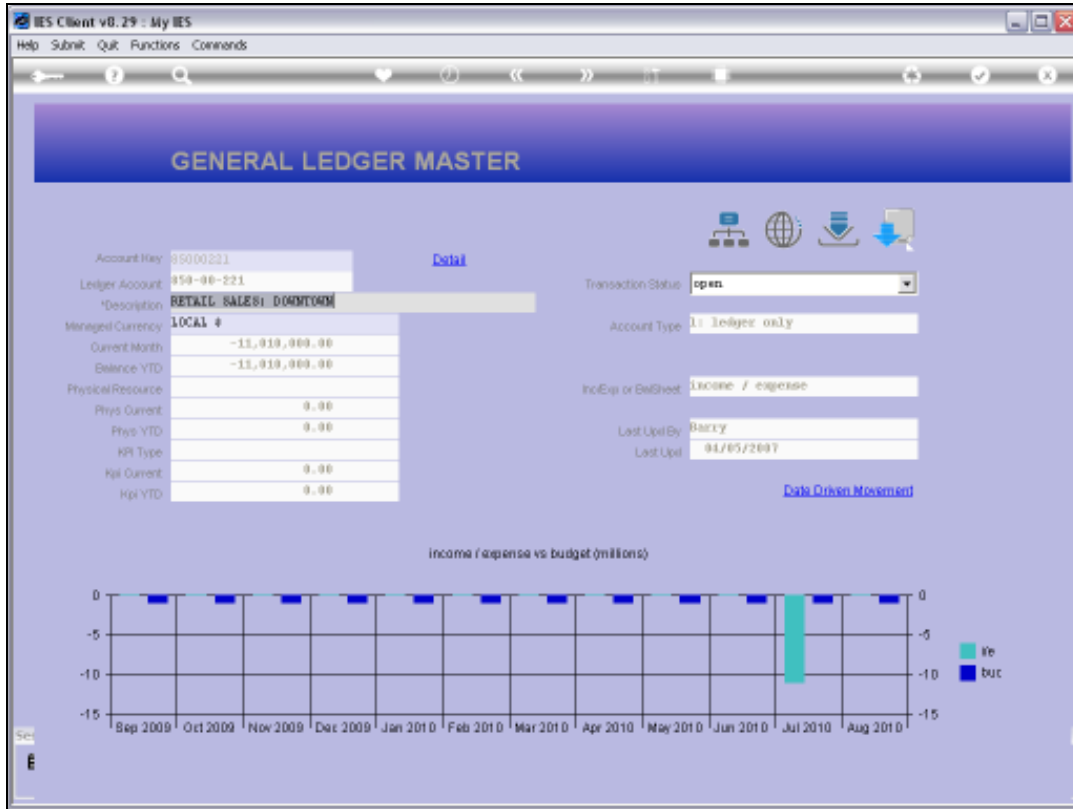
Slide 12

Slide notes: When we drill a Master View, we reach an Enquiry on the Master Account that we have drilled. The Master Views will always include 1 or more GL Accounts, and we can drill those also, for a Ledger Enquiry view on the drilled Account.

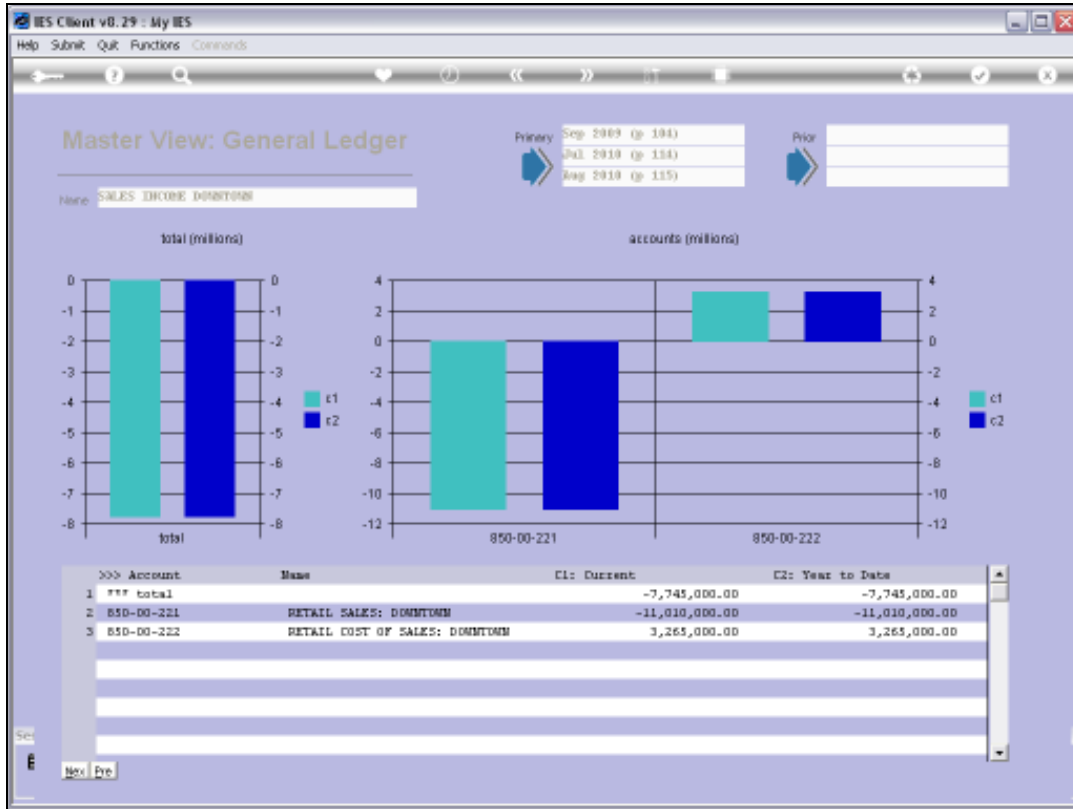


Slide 13

Slide notes:

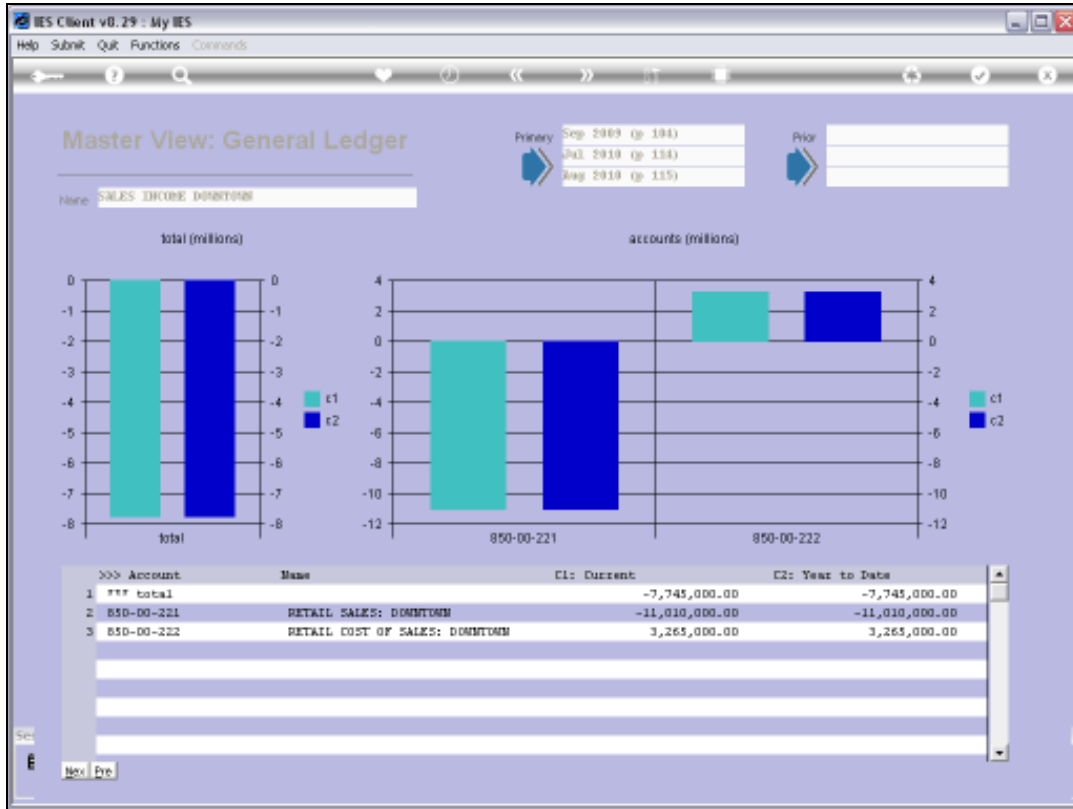


Slide 14
Slide notes:



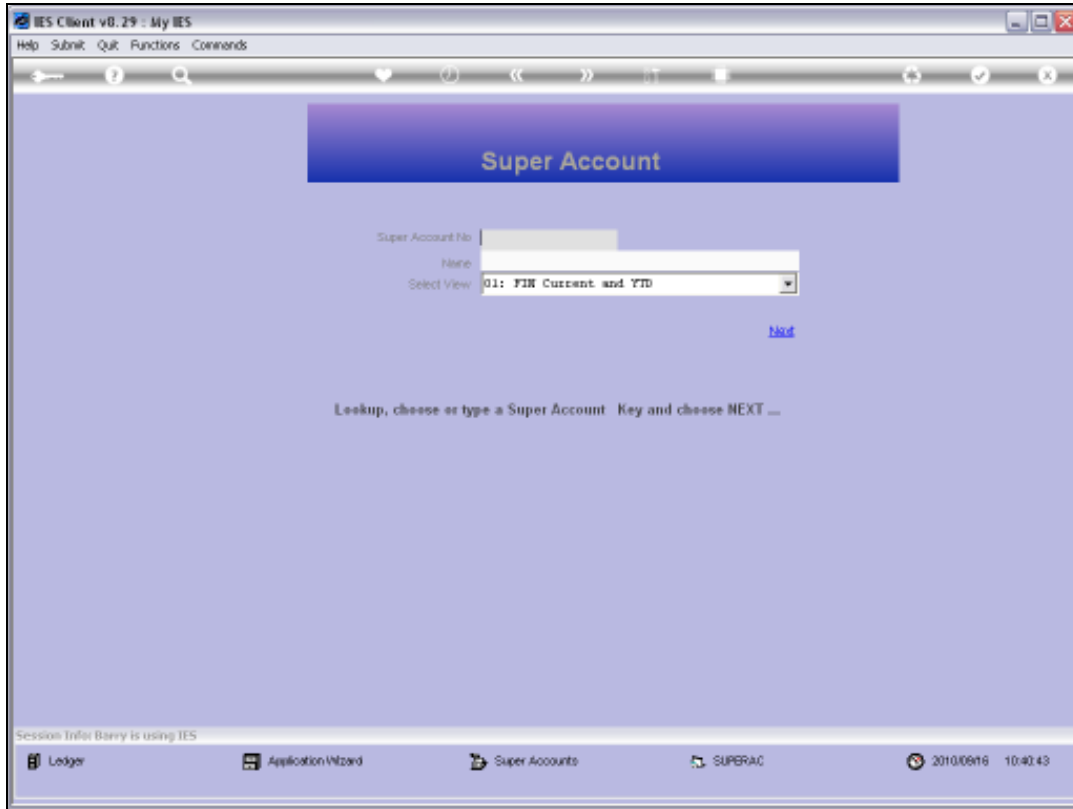
Slide 15

Slide notes:



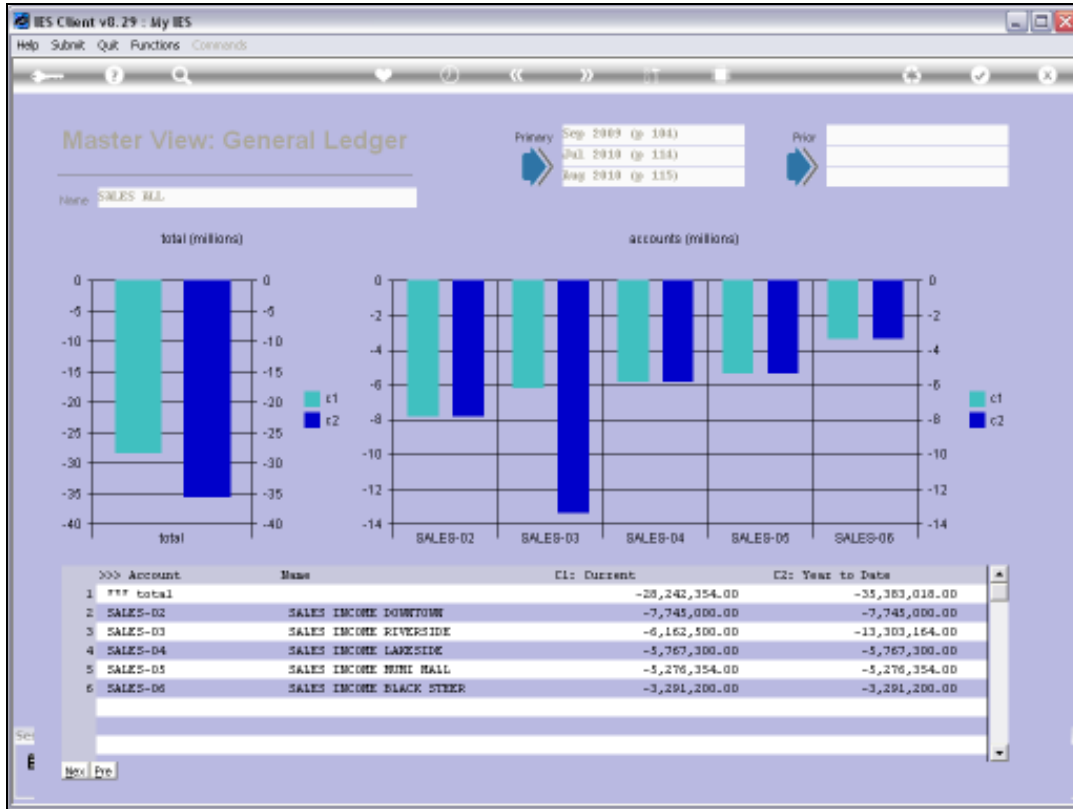
Slide 16

Slide notes:



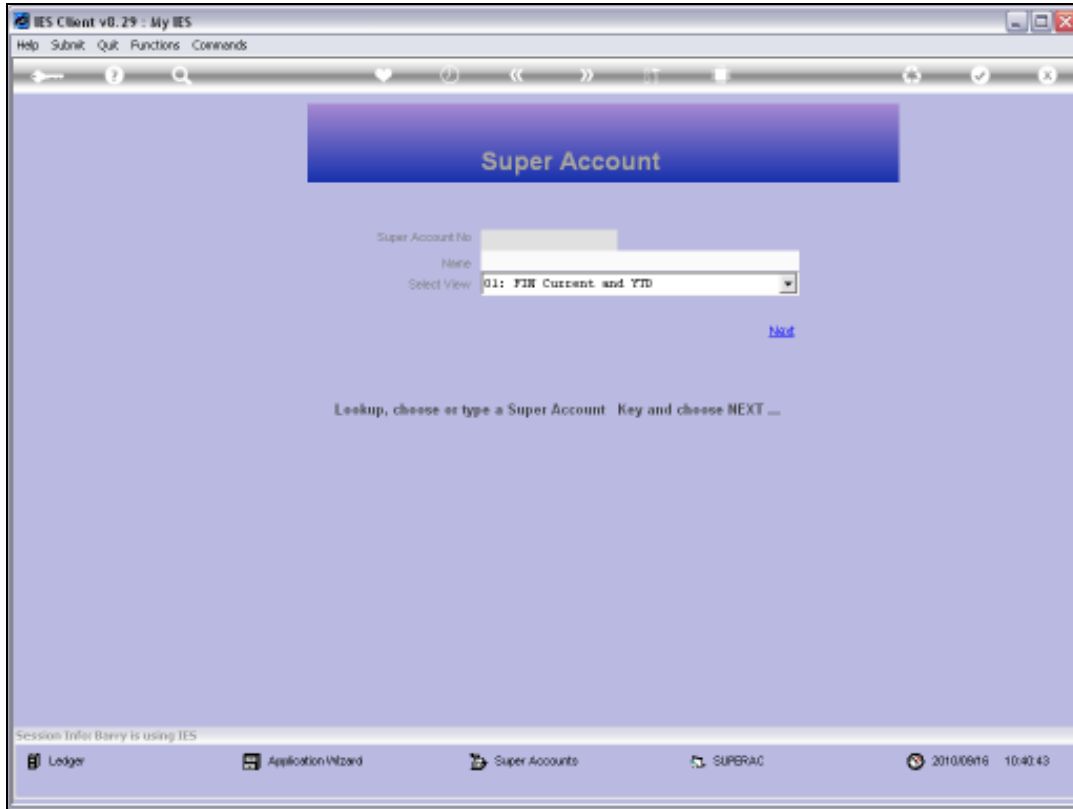
Slide 17

Slide notes:



Slide 18

Slide notes:



Slide 19

Slide notes:



Slide 20

Slide notes: