



## Slide 1

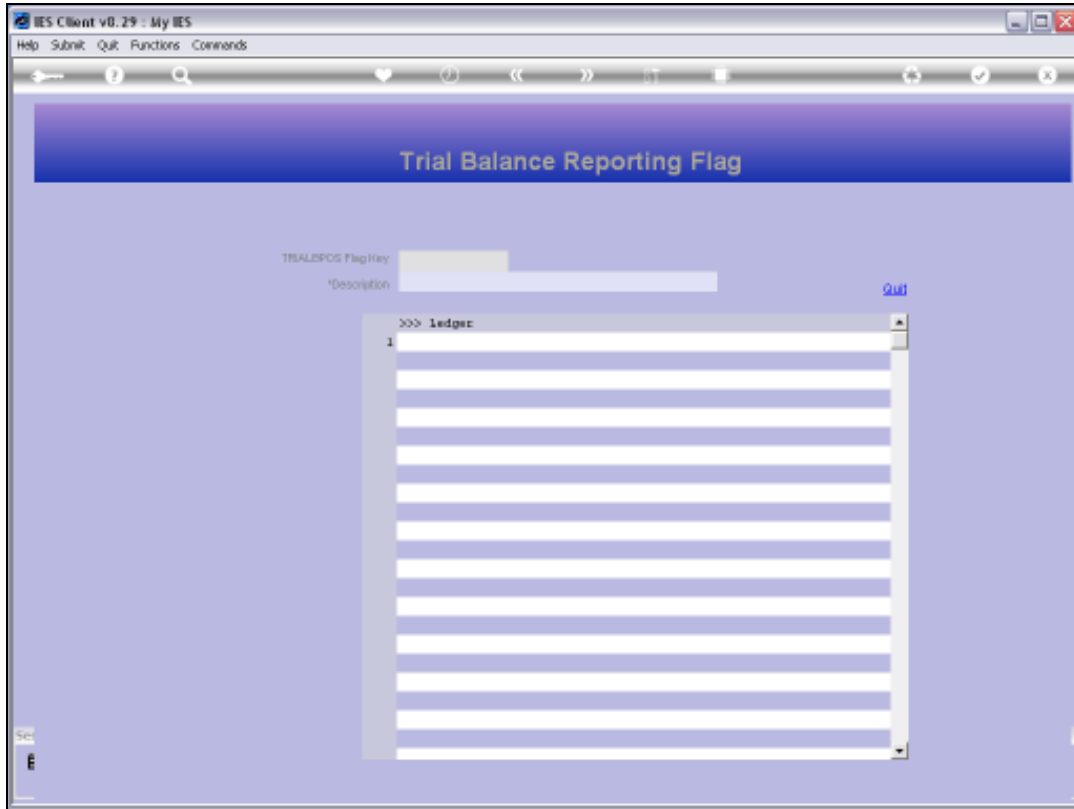
Slide notes: The Trial Balance Report Flag Master can be queried from the Ledger Enquiries menu.



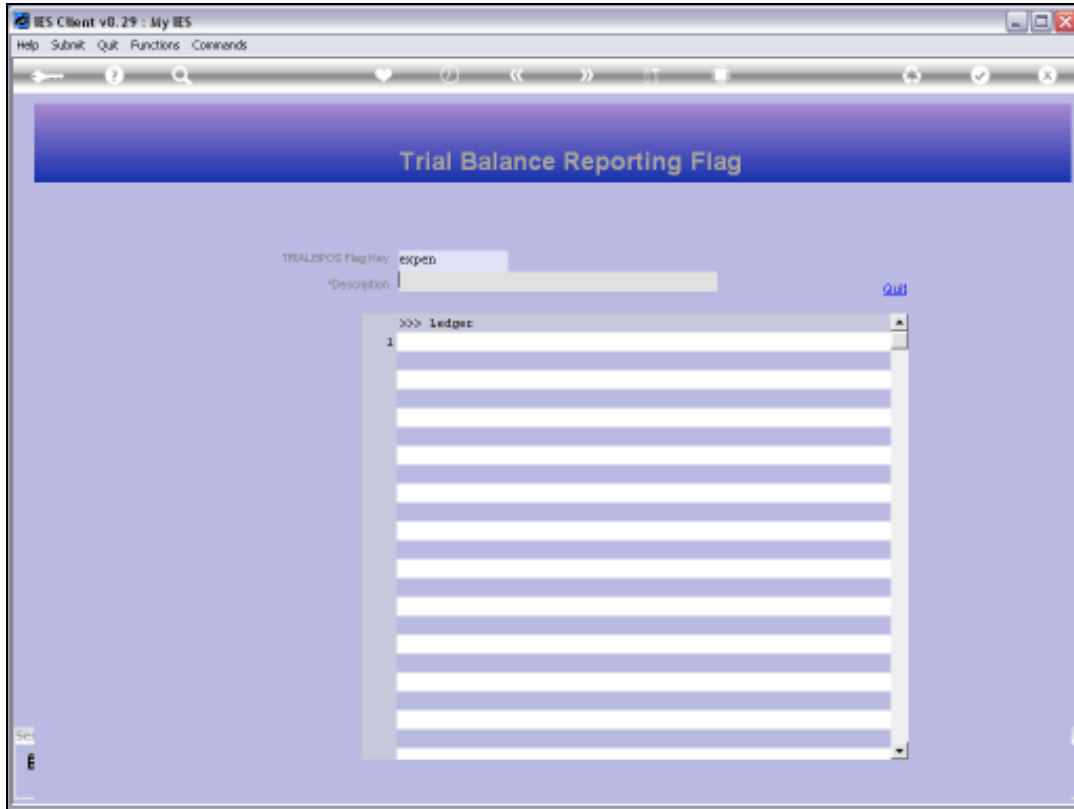
Slide 2  
Slide notes:



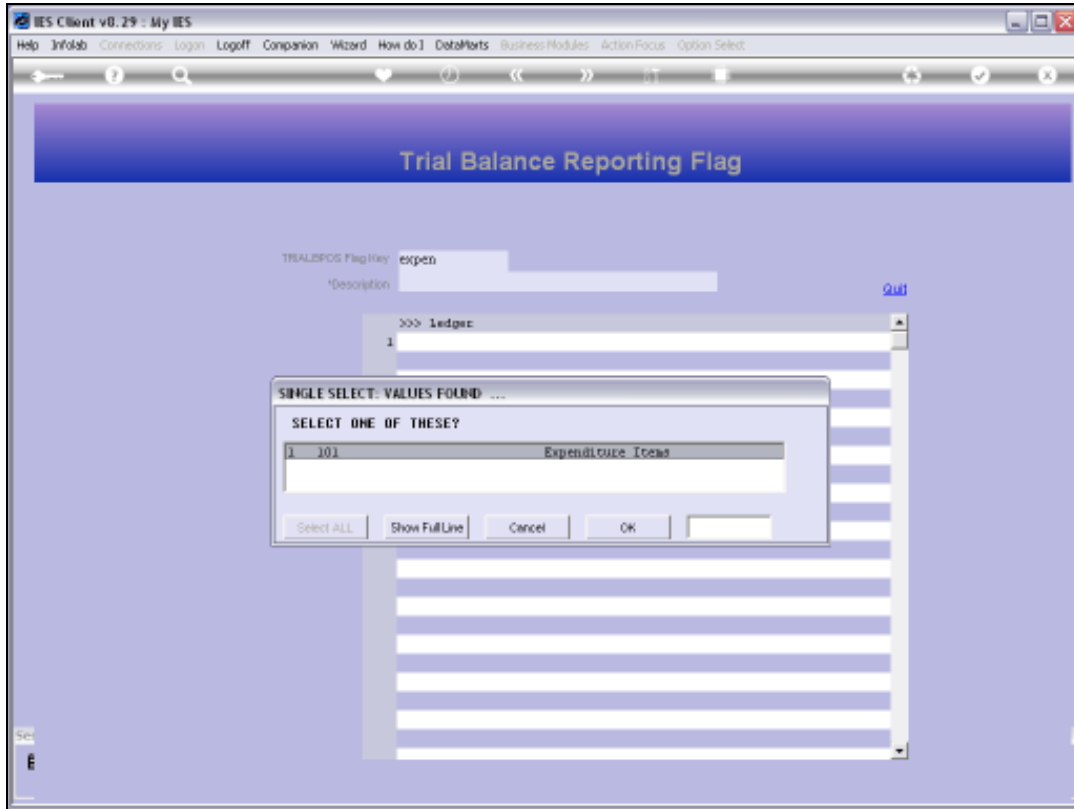
Slide 3  
Slide notes:



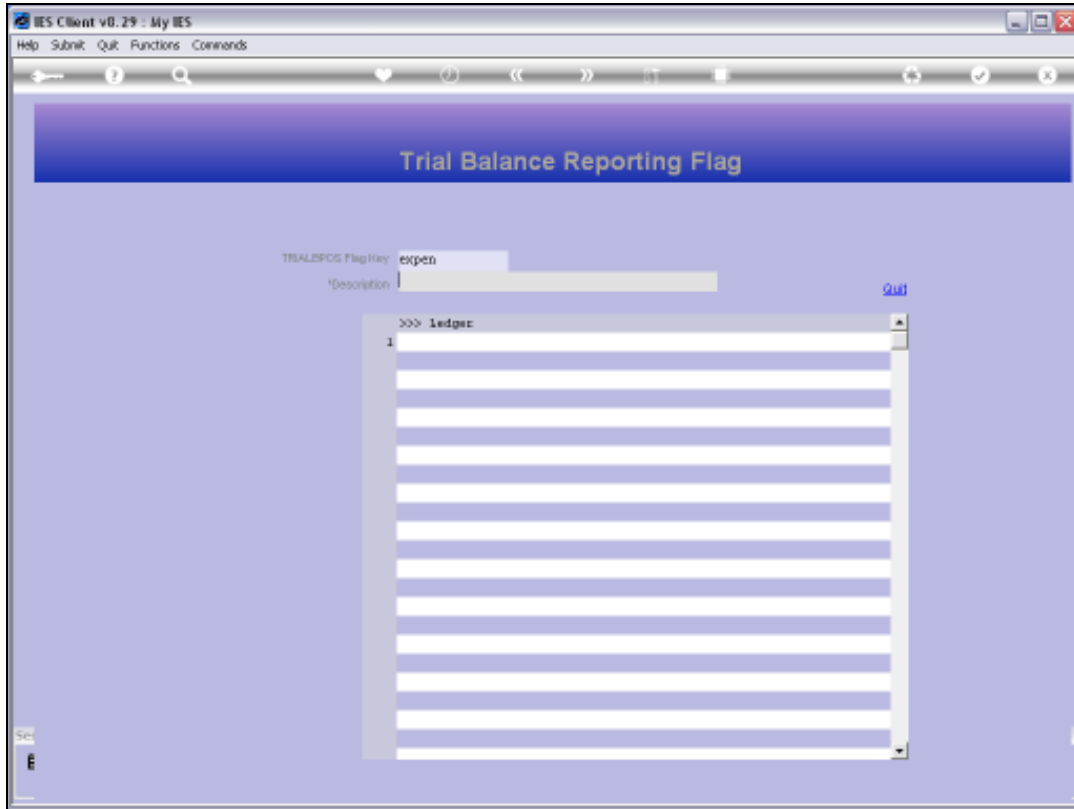
Slide 4  
Slide notes:



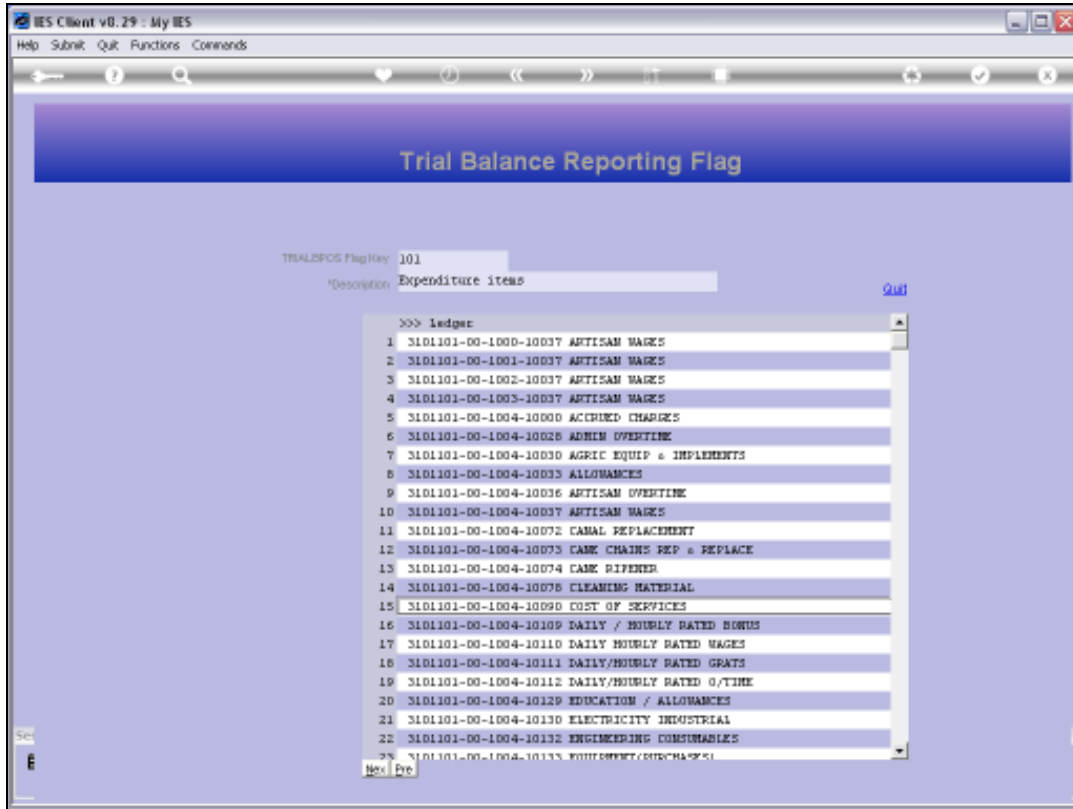
Slide 5  
Slide notes:



Slide 6  
Slide notes:



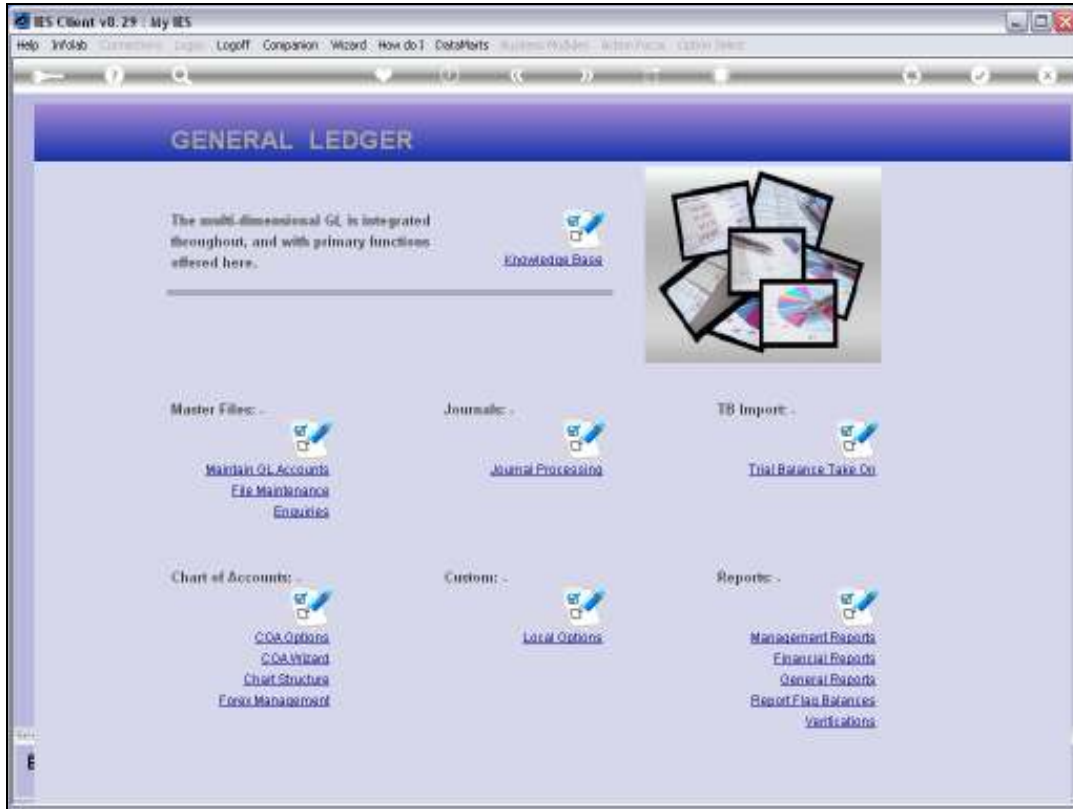
Slide 7  
Slide notes:



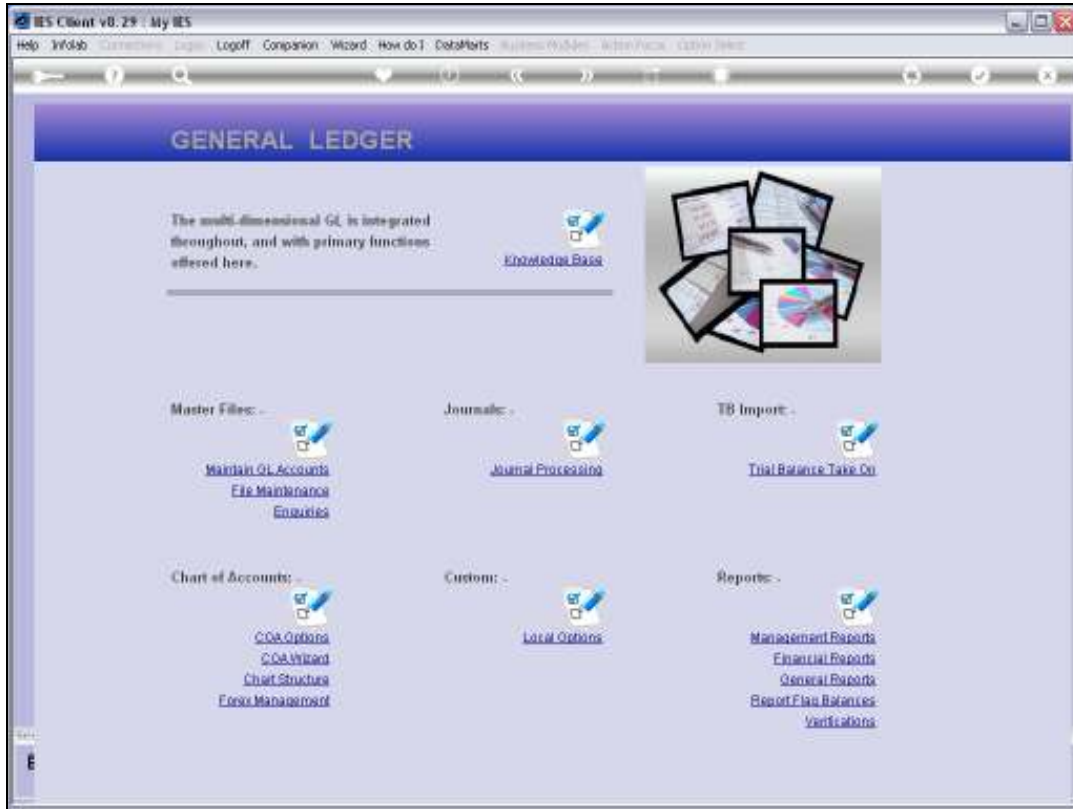
Slide 8

Slide notes: All GL Accounts that currently use this Report Flag are listed. No change is allowed, but we can drill into any of the listed Accounts that use this Report Flag, for a Ledger Enquiry on that Account.





Slide 9  
Slide notes:



Slide 10  
Slide notes: