

Account Key:  [Open New Account](#)

Ledger Account:  [Acct Detail](#)

Description:

Managed Currency: LOCAL

|                   |      |
|-------------------|------|
| Current Month     | 0.00 |
| Balance YTD       | 0.00 |
| Physical Resource |      |
| Phys Current      | 0.00 |
| Phys YTD          | 0.00 |
| KPI Type          |      |
| Kpi Current       | 0.00 |
| Kpi YTD           | 0.00 |

Transaction Status:  [Save](#)

Account Type:

InclExp or BalSheet:

Last Upd By:

Last Upd:

[Data Driven Movement](#)

[Get Audit Trail](#)

[History](#)

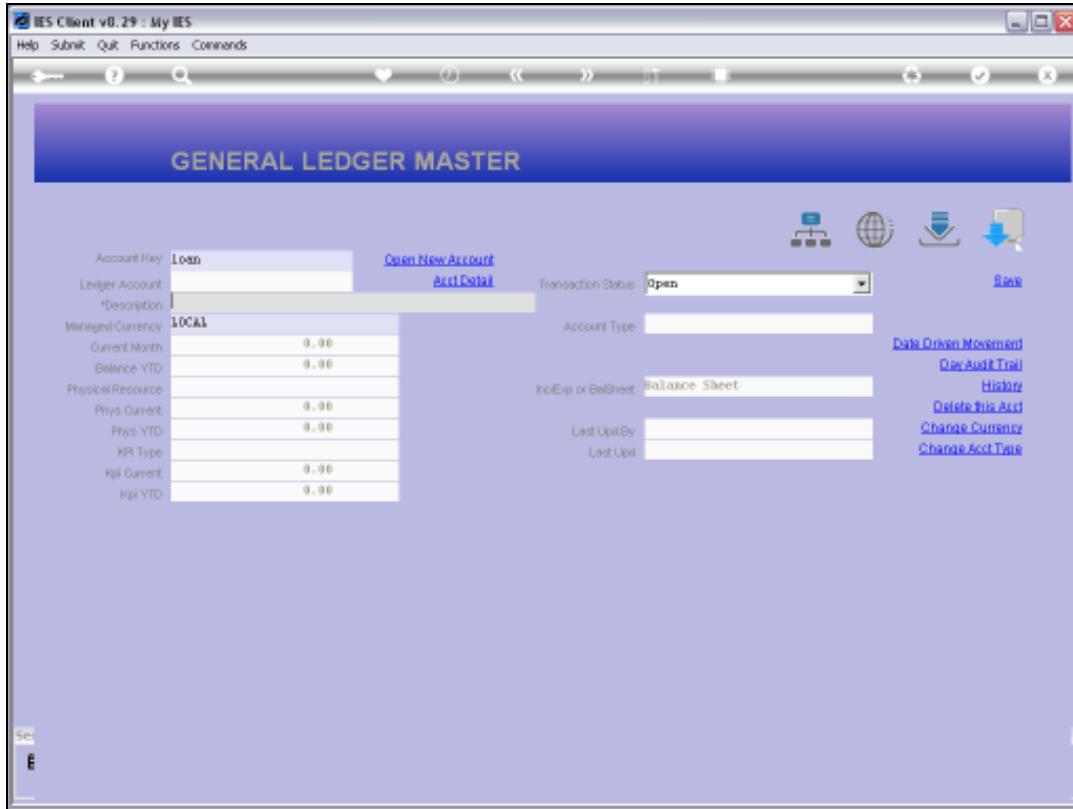
[Delete This Acct](#)

[Change Currency](#)

[Change Acct Type](#)

## Slide 1

Slide notes: Most of our Accounts in the Ledger will be type "L", for Ledger Only. However, when we open Accounts to control Sub Ledgers, then we have to change the Type on these Accounts before we can assign Sub Ledger Accounts to them.



Slide 2  
Slide notes:

Account Key:  [Open New Account](#)

Ledger Account:  [Acct Detail](#)

\*Description:

Managed Currency:  Transaction Status:  [Risk](#)

Current Month:  Account Type:  [Data Driven Movement](#)

[Download Tool](#)

**SINGLE SELECT: VALUES FOUND ...**

SELECT ONE OF THESE?

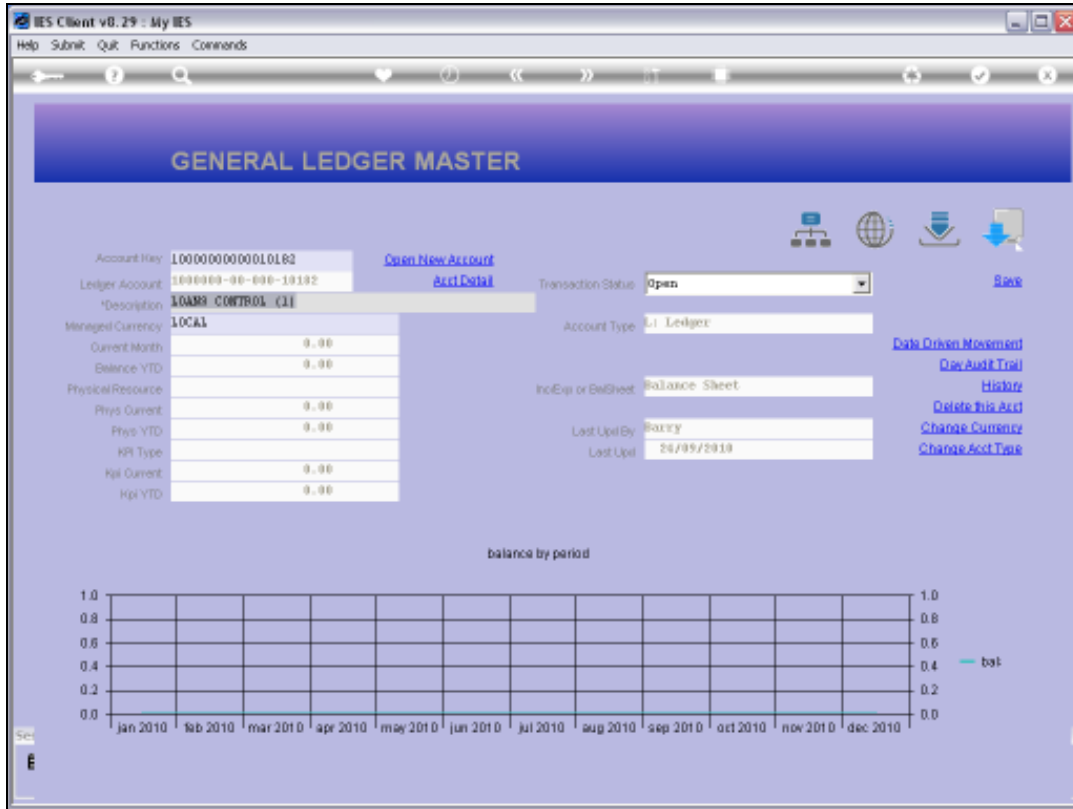
|   |                    |                      |                          |
|---|--------------------|----------------------|--------------------------|
| 1 | 100000-00-00-10182 | Loans Control (1)    | Ho: Private Led Accounts |
| 2 | 100000-00-00-10183 | Loans Control (2)    | Ho: Private Led Accounts |
| 3 | 100000-00-00-10184 | Loans Control (3)    | Ho: Private Led Accounts |
| 4 | 100000-00-00-10251 | Staff Computer Loans | Ho: Private Led Accounts |

Slide 3

Slide notes: A Loans Control Account is an example of such an Account that is destined to head up a Sub Ledger.

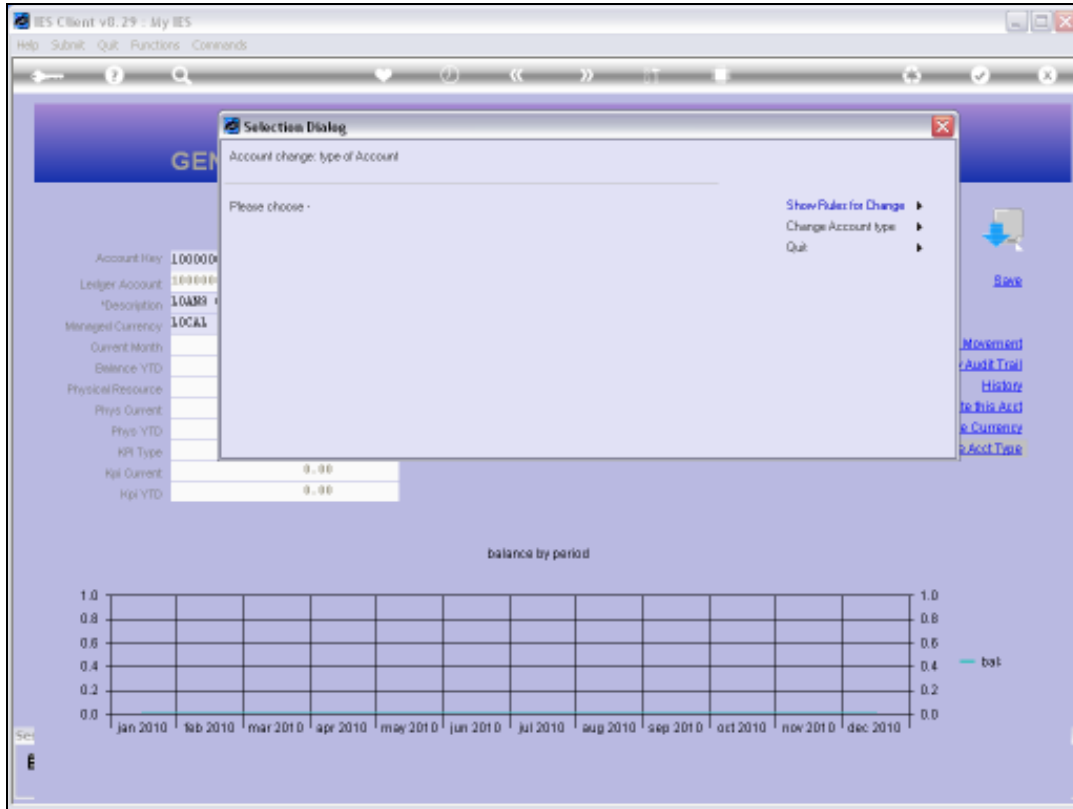


Slide 4  
Slide notes:



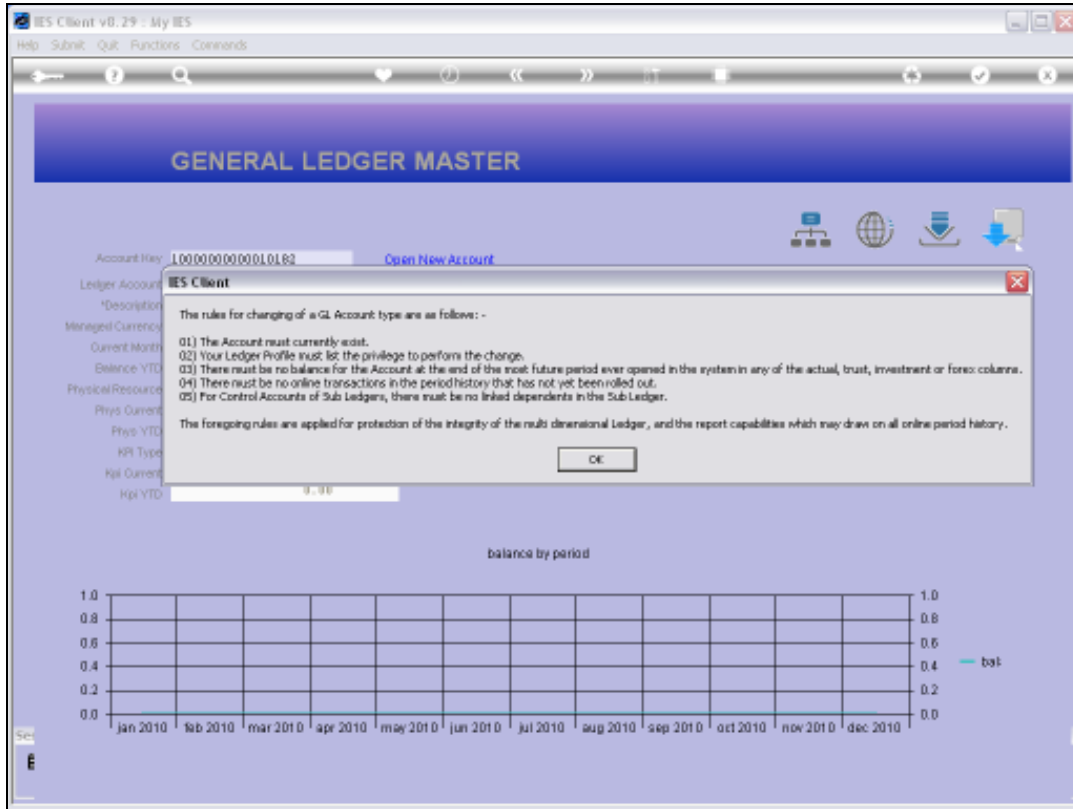
Slide 5

Slide notes: When we first open the Account, the type will default to Ledger, and we need to use the function "Change Account Type" to convert the Account to a different type.



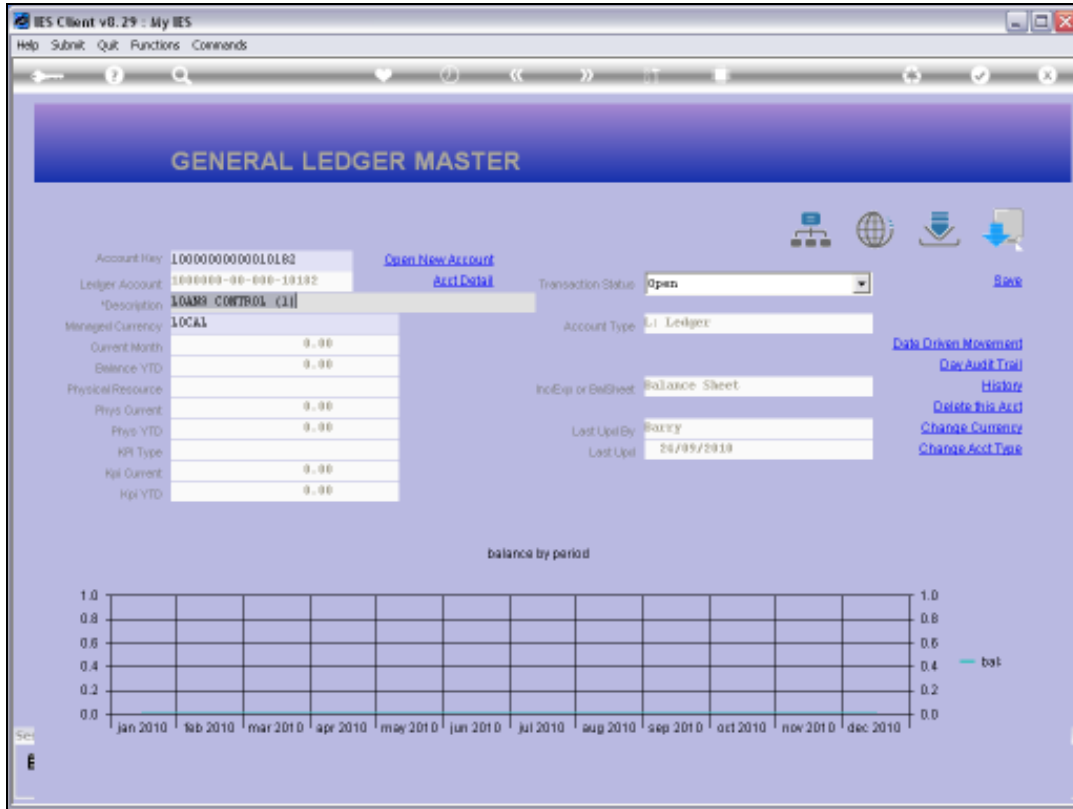
Slide 6

Slide notes: First, let us see the rules for this change.



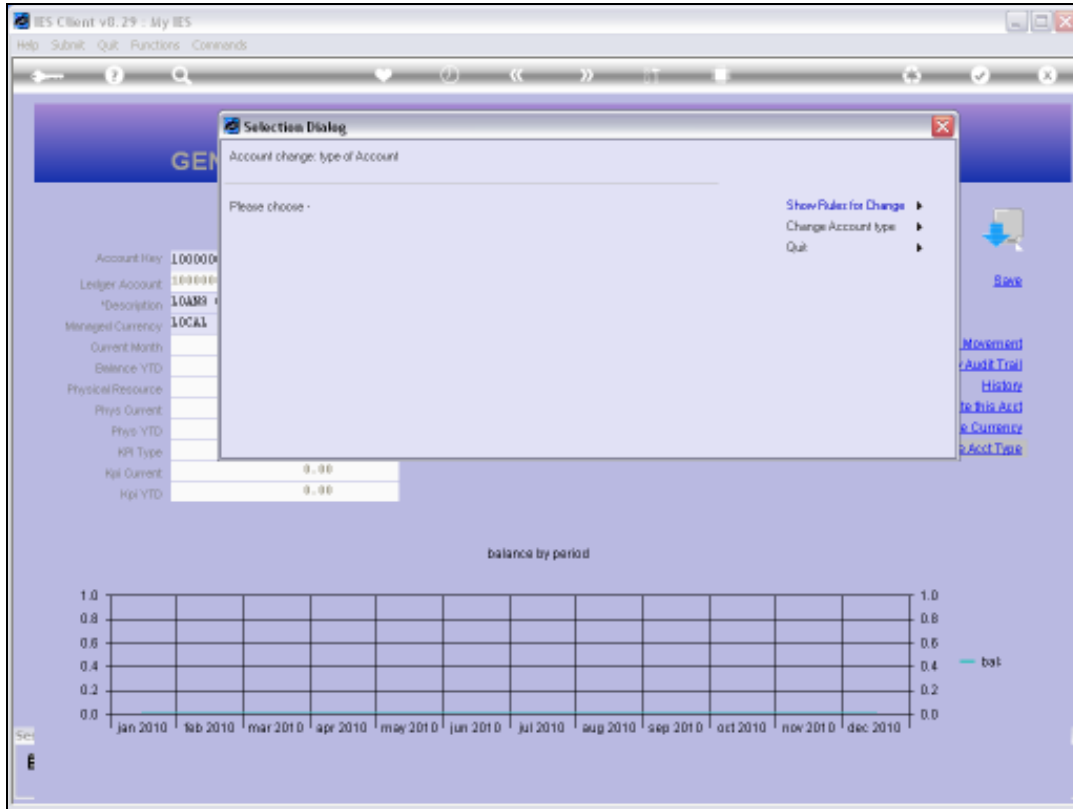
Slide 7

Slide notes: After an Account has been posted with a Transaction, it is no longer possible to change the Type, so we can only do it while the Account is still new.

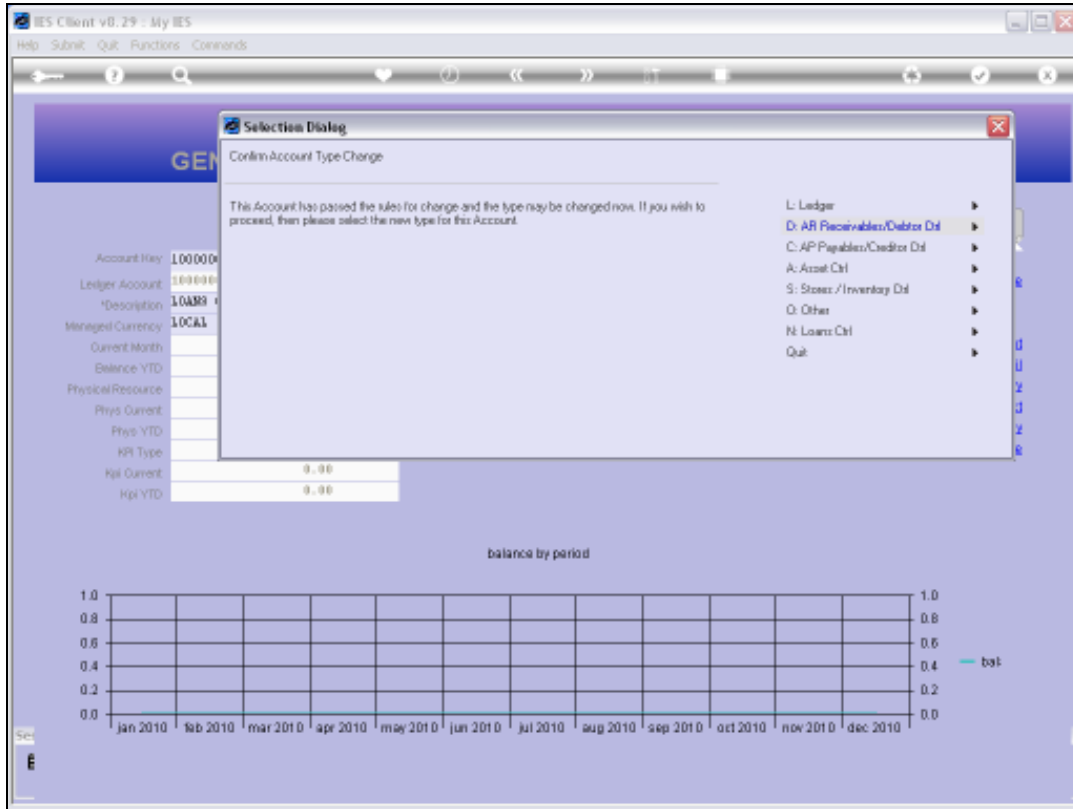


Slide 8  
Slide notes:





Slide 9  
Slide notes:



Slide 10

Slide notes: The possible options for the Account Type are Ledger, or else 1 of the Sub Ledger Control Types. For example, if the Account will be a Controller for a Stock & Stores Sub Ledger, then we will select the Stores option. In this case, we choose the Loans option.

The screenshot displays the 'GENERAL LEDGER MASTER' window in the IES Client v8.29. The window title bar shows 'IES Client v8.29 - My IES' and a menu bar with 'Help', 'Submit', 'Quit', 'Functions', and 'Commands'. The main content area is divided into several sections:

- Account Information:** Account Key: 1000000000010162 (with a 'Open New Account' link), Ledger Account: 100000-00-000-10162 (with an 'Acct Detail' link), and Description: LOANS CONTROL (1).
- Managed Currency:** LOCAL. A table shows values for Current Month, Balance YTD, Phys Current, Phys YTD, Hpl Current, and Hpl YTD, all set to 0.00.
- Physical Resource:** Ledger, Balance Sheet, and Currency.
- Transaction Status:** Open (dropdown menu).
- Buttons:** Save, Data Origin Movement, Date Audit Trail, History, Delete This Acct, Change Currency, and Change Acct Type.
- Metadata:** Date Opened: 26/09/2010, Last Upd: 26/09/2010.
- Chart:** A 'balance by period' chart with a grid for months from Jan 2010 to Dec 2010. The y-axis ranges from 0.0 to 1.0. A legend indicates 'bal'.

Slide 11  
Slide notes:

**GENERAL LEDGER MASTER**

Account Key: 100000000010162 [Open New Account](#)

Ledger Account: 100000-00-00-10162 [Acct Detail](#)

Description: **LOANS CONTROL (CL)**

Managed Currency: LOCAL

Physical Resource: LOCAL

Current Month: 0.00

Balance YTD: 0.00

Phys Current: 0.00

Phys YTD: 0.00

HP Current: 0.00

HP YTD: 0.00

Transaction Status: Open

Account Type: **LI Loans Ctrl**

Inc/Eqp or BalSheet: Balance Sheet

Last Upd By: Ruxxy

Last Upd: 26/09/2010

[Save](#)

[Data Drive Movement](#)

[Doc Audit Trail](#)

[History](#)

[Delete This Acct](#)

[Change Currency](#)

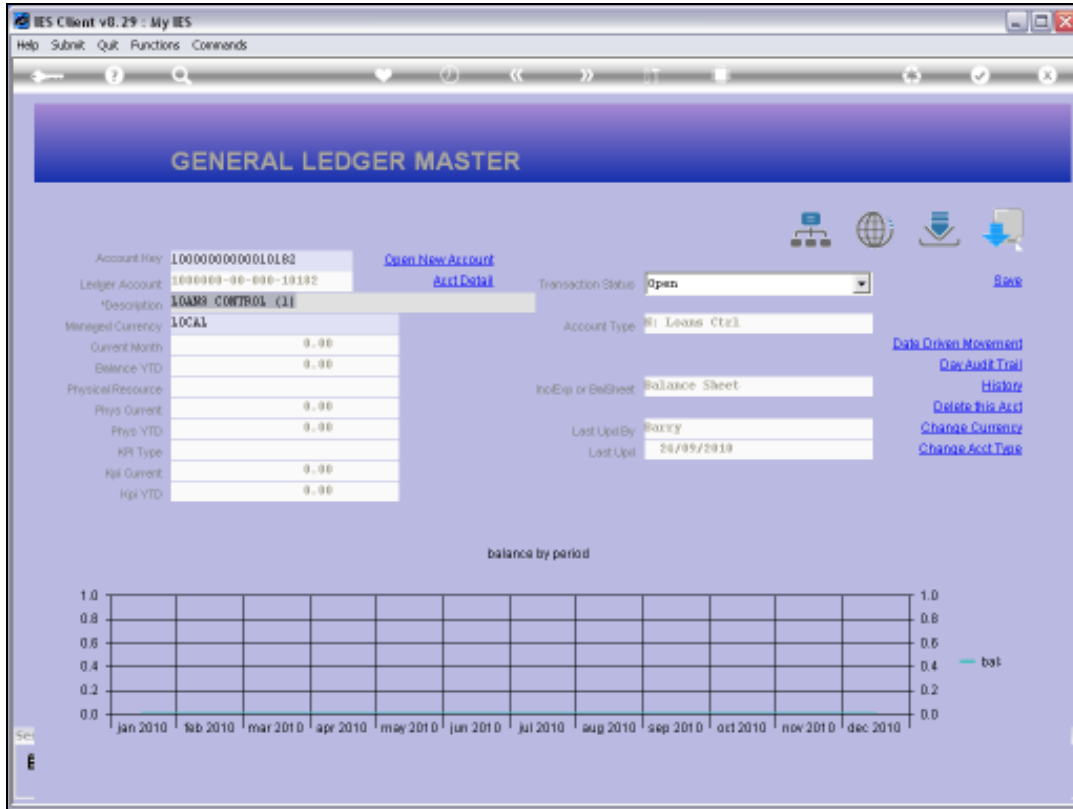
[Change Acct Type](#)

balance by period

| Month | Jan 2010 | Feb 2010 | Mar 2010 | Apr 2010 | May 2010 | Jun 2010 | Jul 2010 | Aug 2010 | Sep 2010 | Oct 2010 | Nov 2010 | Dec 2010 |
|-------|----------|----------|----------|----------|----------|----------|----------|----------|----------|----------|----------|----------|
| bal   |          |          |          |          |          |          |          |          |          |          |          |          |

Slide 12

Slide notes: Note that the Type has now been updated.



Slide 13  
Slide notes: