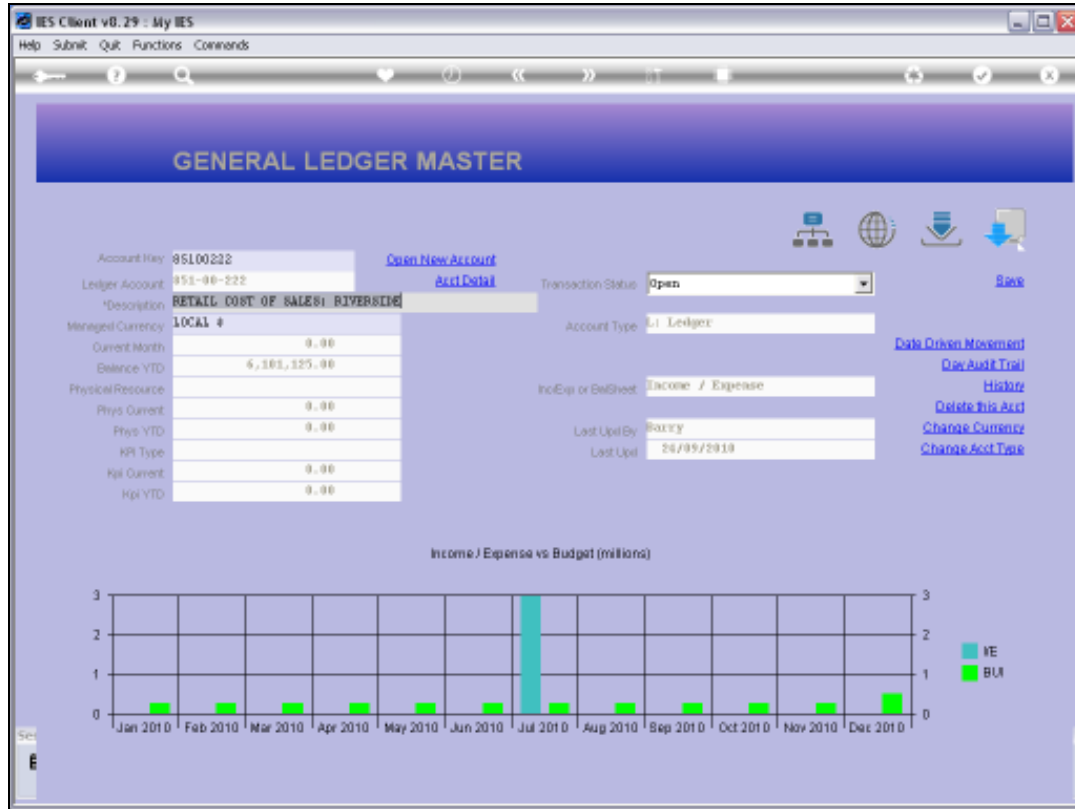


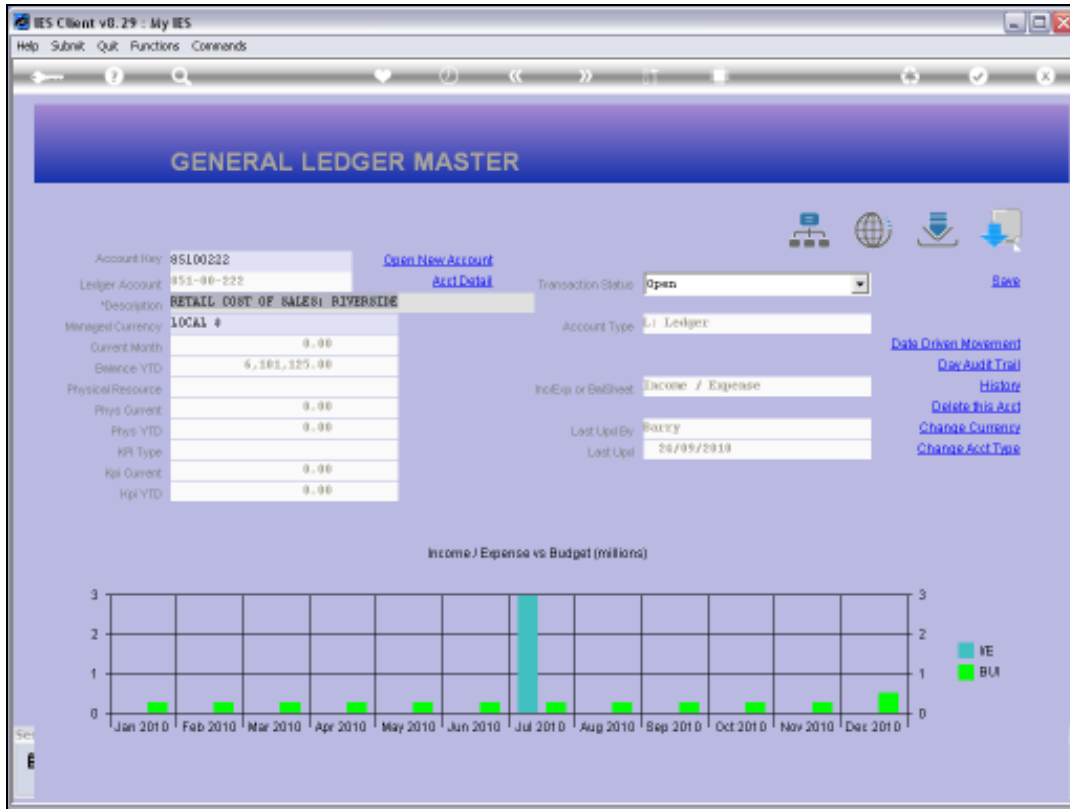


## Slide 1

Slide notes: The GL Master is often entered on the so-called "front screen" where only the primary indicators for the Account are shown, together with a Chart that adapts dependent on whether the Account is Balance Sheet or P&L.



Slide 2  
Slide notes:

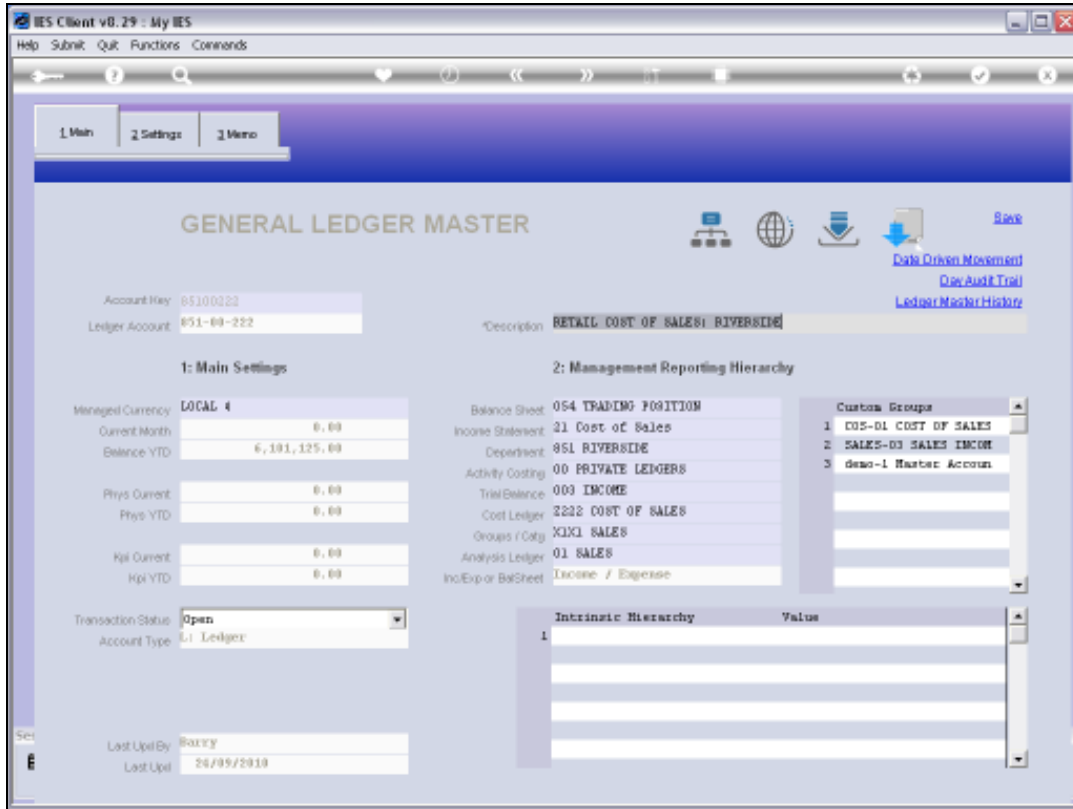


Slide 3  
Slide notes:

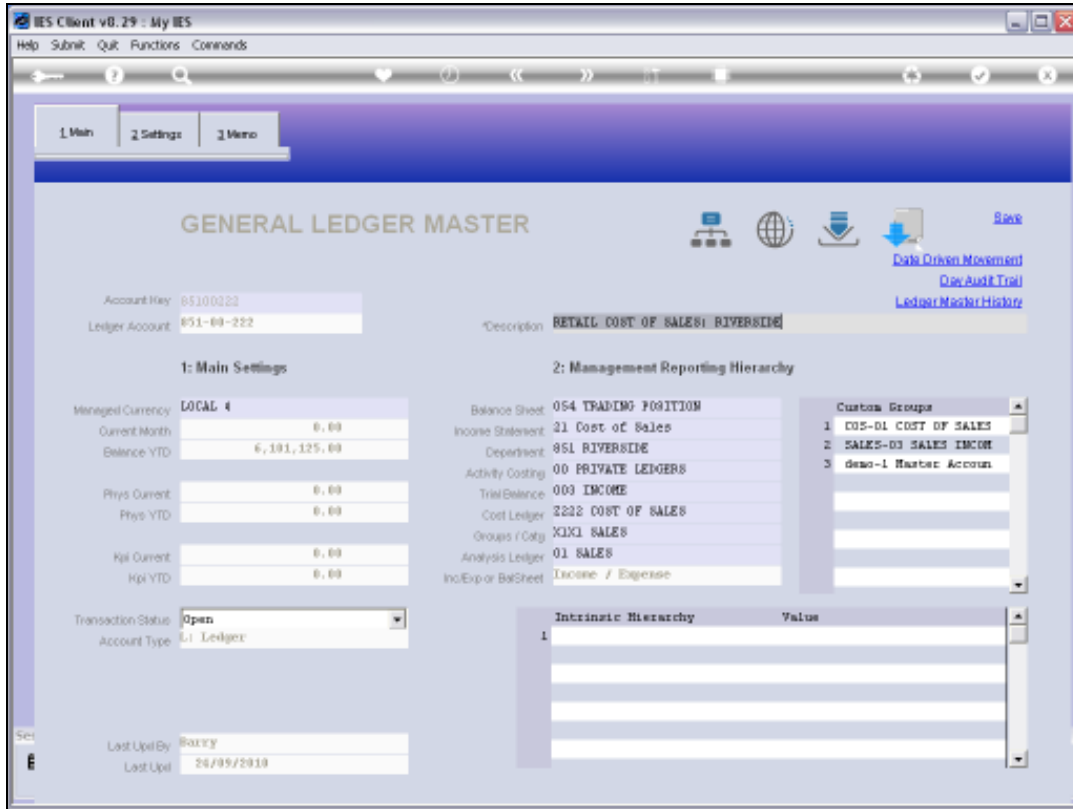


Slide 4

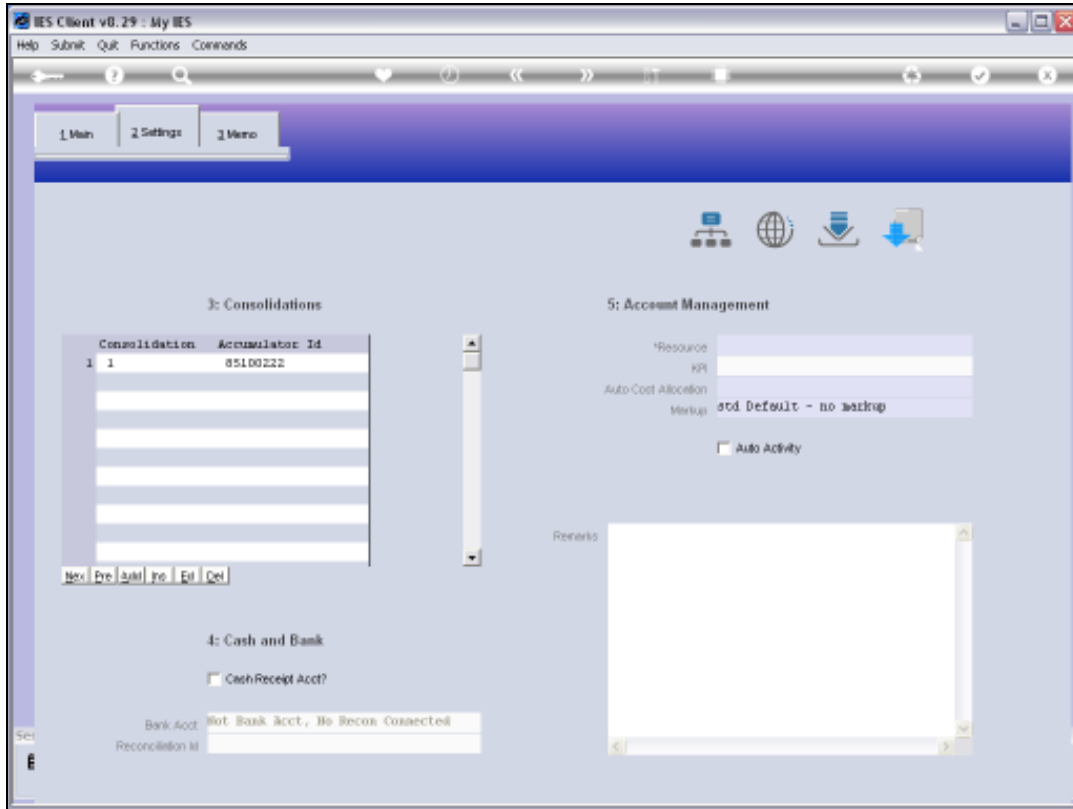
Slide notes: But we can always reach the detail settings for the Account by choosing "Account Detail".



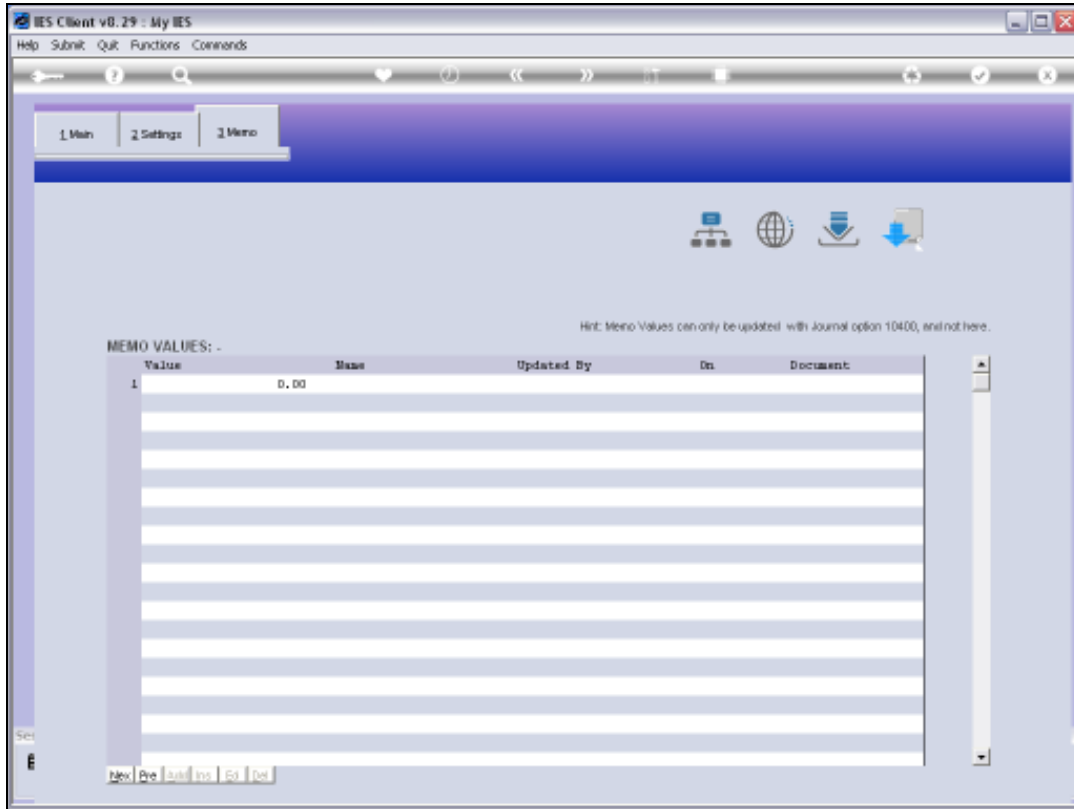
Slide 5  
Slide notes:



Slide 6  
Slide notes:



Slide 7  
Slide notes:



Slide 8  
Slide notes:





Slide 9  
Slide notes:



Slide 10  
Slide notes:



Slide 11  
Slide notes: