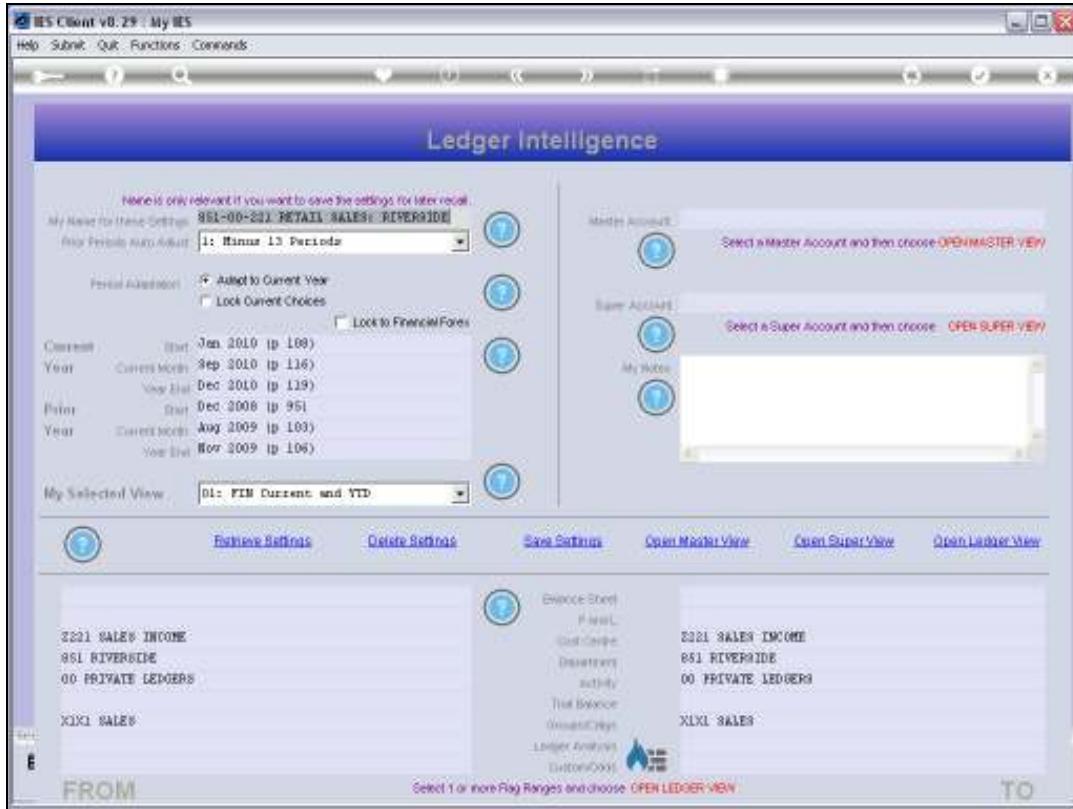


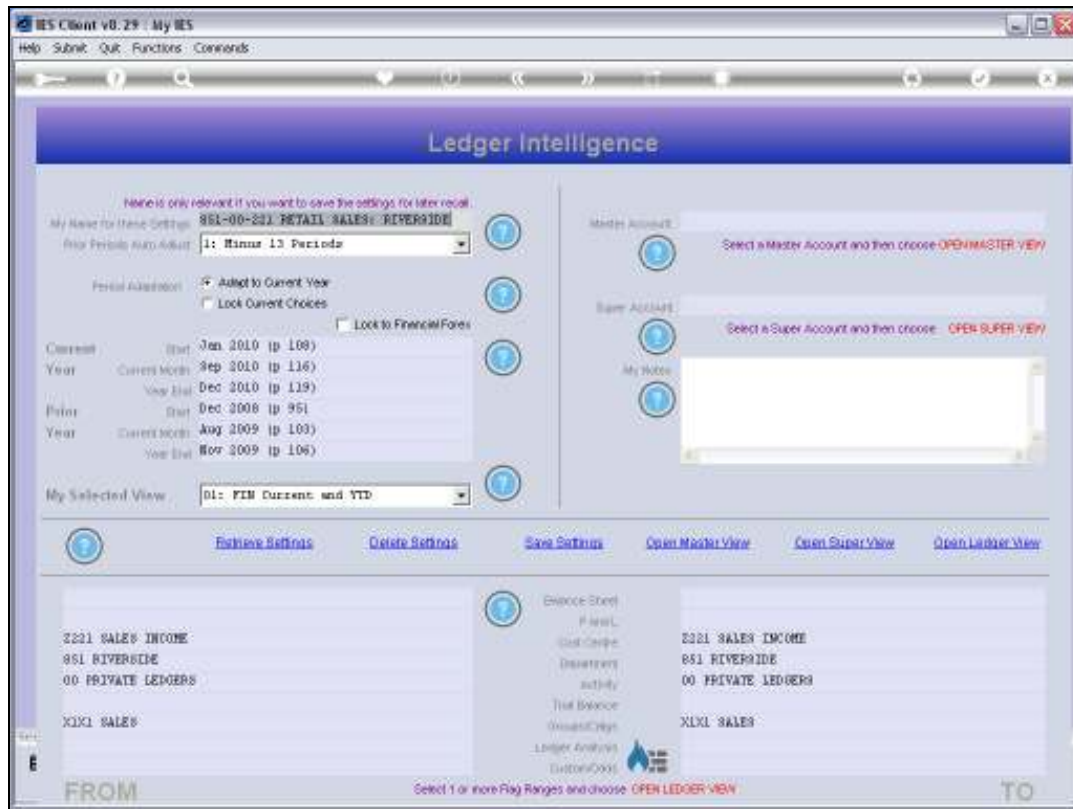


Slide 1

Slide notes: From the Ledger Master screen, we have direct entry to the Ledger Business Intelligence.

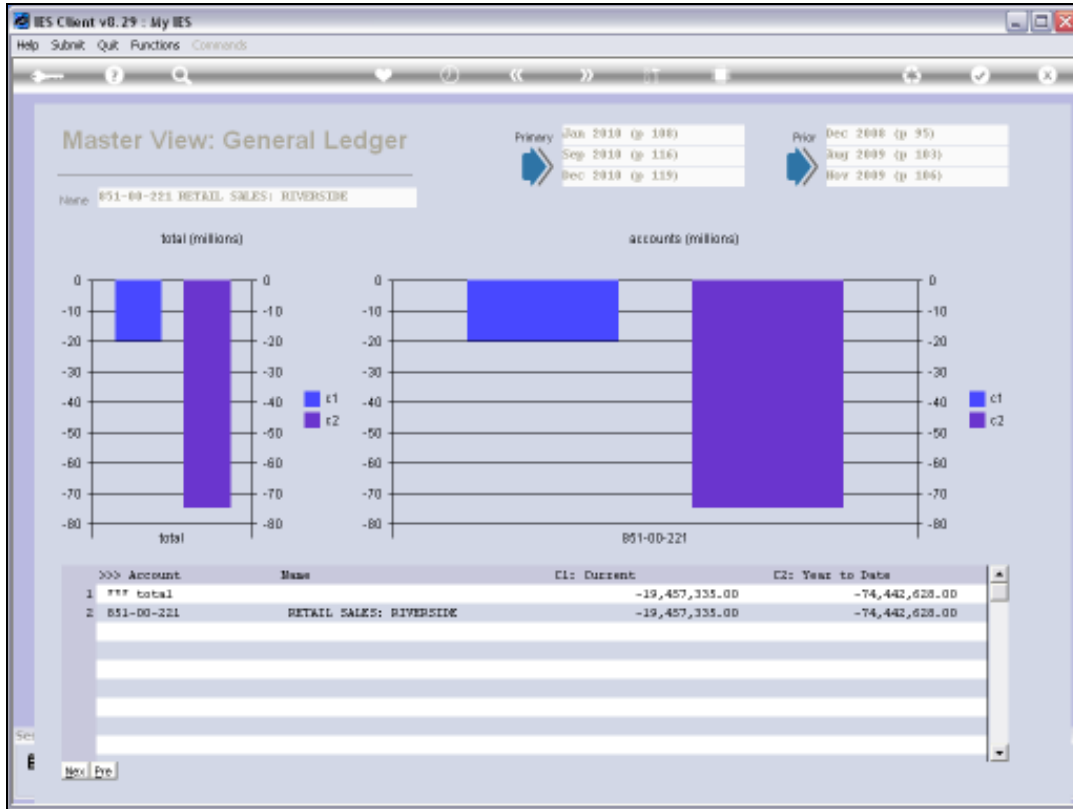


Slide 2
Slide notes:



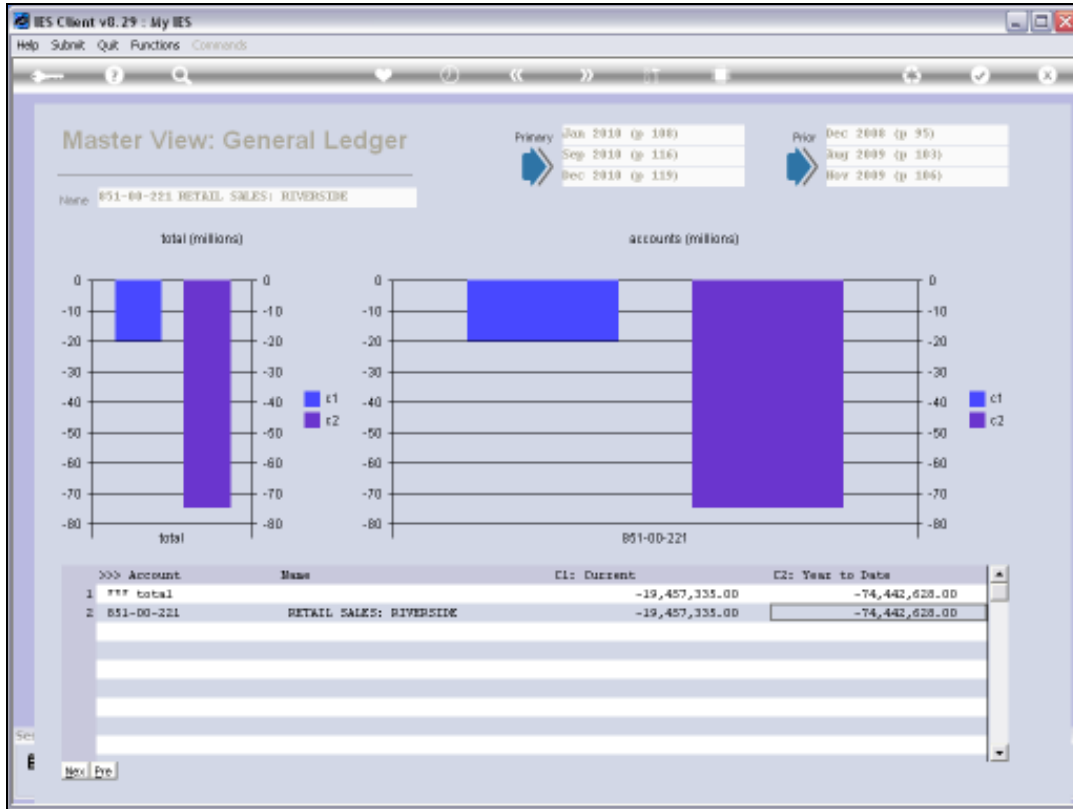
Slide 3

Slide notes: When we enter BI, the emphasis is automatically on the current Account, and we need only open the 'Ledger View'. However, if we wish to explore other parts of Business Intelligence, then of course we can.



Slide 4

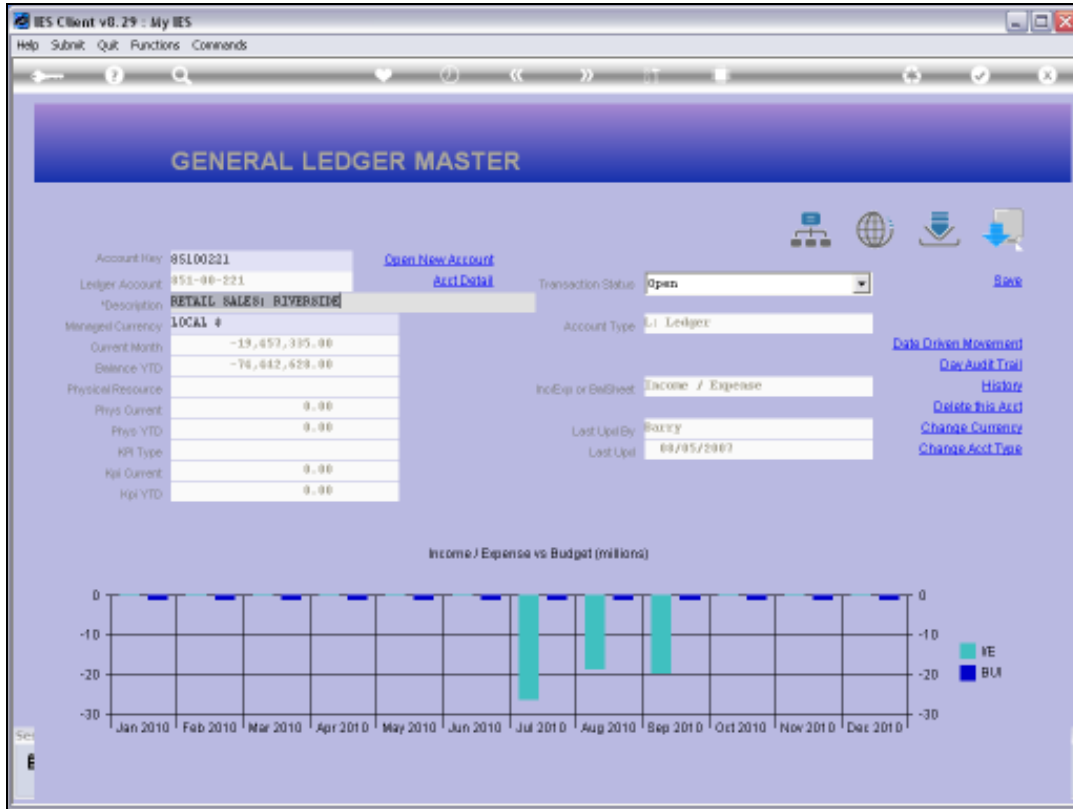
Slide notes: Here is the view on the current Account.



Slide 5
Slide notes:



Slide 6
Slide notes:



Slide 7
Slide notes: