



Slide 1

Slide notes: On the Ledger Master screen, in update mode, we have a 'History' function.

GENERAL LEDGER MASTER

Account Key: 100000508 [Open New Account](#)
 Ledger Account: 100-00-050-B [Acct Detail](#) Transaction Status: Open [Save](#)
 *Description: LAMDED COSTS
 Managed Currency: LOCAL \$ Account Type: 5.1 Ledger
 Current Month: 9.00 [Data Drive Movement](#)
 Balance YTD: -249,678.26 [Doc Audit Trail](#)
 Physical Resource: [History](#)
 Phys Current: [Delete this Acct](#)
 Phys YTD: [Change Currency](#)
 Hpl Type: [Change Acct Type](#)
 Hpl Current:
 Hpl YTD:

SINGLE SELECT: SELECT ITEM TO VIEW OR CANCEL

DATE	TIME	OPERATOR
1	24/09/2010 10:47	Baccy
2	01/12/2006 16:01	Baccy

Select ALL Show FullLine Cancel OK

balance by period

Chart showing balance by period from Jan 2010 to Dec 2010. The balance is -249,678.26.

Slide 2

Slide notes: All previous versions of the GL Account record are stored, and we can trace back any prior states of the Accounts.

GENERAL LEDGER MASTER

Account Key: 100000508 [Open New Account](#)
 Ledger Account: 100-00-050-B [Acct Detail](#) Transaction Status: Open [Risk](#)
 *Description: LAWDED DOBTS
 Managed Currency: LOCAL \$ Account Type: L: Ledger
 Current Month: 9.00 [Data Drive Movement](#)
 Balance YTD: -249,679.26 [Day Audit Trail](#)
 Physical Resource: [History](#)
 Phys Current: [Delete This Acct](#)
 Phys YTD: [Change Currency](#)
 NP Type: [Change Acct Type](#)
 NP Current:
 NP YTD:

SINGLE SELECT: SELECT ITEM TO VIEW OR CANCEL

DATE	TIME	OPERATOR
1	24/09/2010 10:47	Barry
2	01/12/2006 16:01	Barry

Select ALL Show FullLine Cancel OK

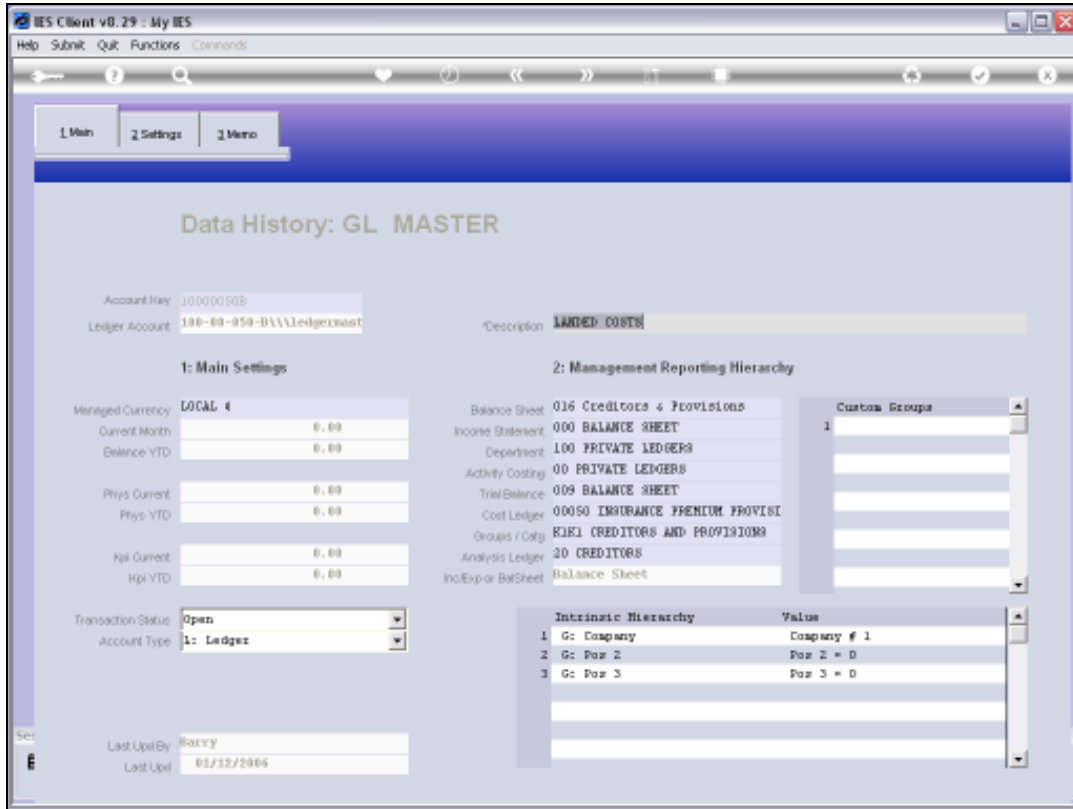
balance by period

0 -50000 -100000 -150000 -200000 -250000

Jan 2010 Feb 2010 Mar 2010 Apr 2010 May 2010 Jun 2010 Jul 2010 Aug 2010 Sep 2010 Oct 2010 Nov 2010 Dec 2010

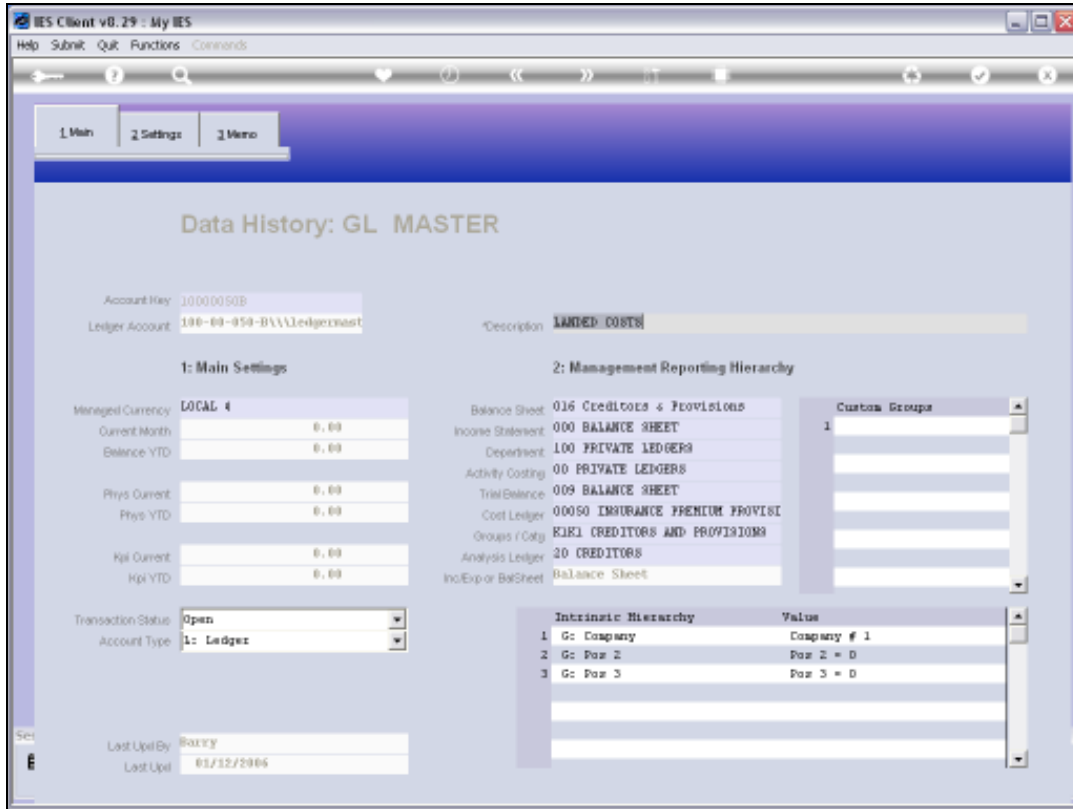
Slide 3

Slide notes: In this example, the Account was first created by Barry in 2006, and then changed again, also by Barry, in 2010.

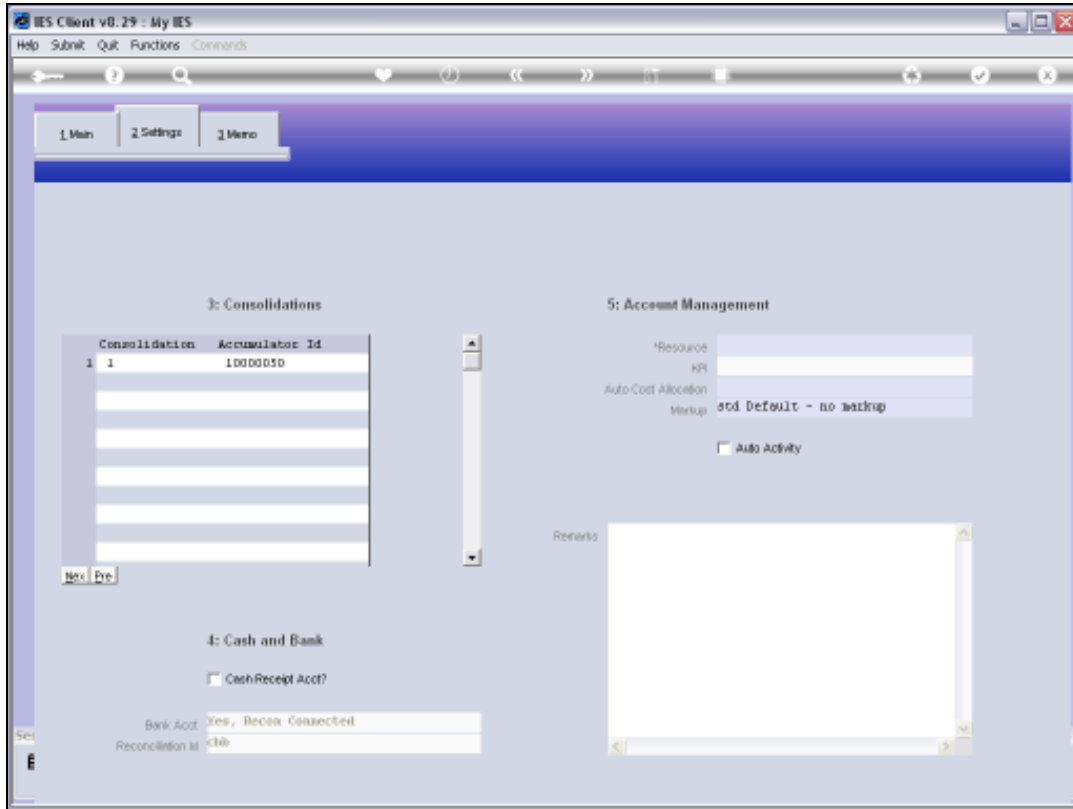


Slide 4

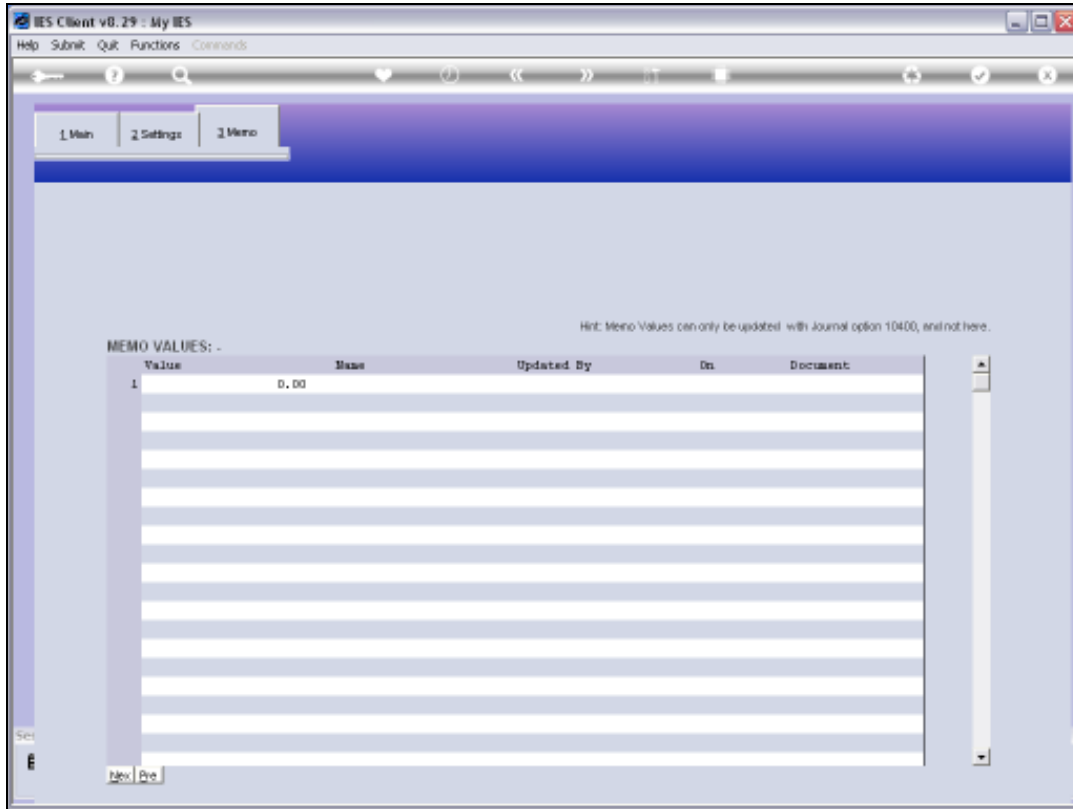
Slide notes: When we select a version point, then we drill into the state of the Record as it was then.



Slide 5
Slide notes:



Slide 6
Slide notes:



Slide 7
Slide notes:

Account Key: 100000508 [Open New Account](#)

Ledger Account: 100-00-050-B [Acct Detail](#) Transaction Status: Open [Save](#)

Description: LAMDED COSTS

Managed Currency: LOCAL # Account Type: 5.1 Ledger

Current Month: 0.00 [Data Driven Movement](#)

Balance YTD: -249,679.26 [Doc Audit Trail](#)

Physical Resource: [History](#)

Phys Current: [Delete This Acct](#)

Phys YTD: [Change Currency](#)

HP Type: [Change Acct Type](#)

HP Current:

HP YTD:

SINGLE SELECT: SELECT ITEM TO VIEW OR CANCEL

	DATE	TIME	OPERATOR
1	24/09/2010	10:47	Baccy
2	01/12/2009	16:01	Baccy

Select ALL Show FullLine Cancel OK

balance by period

Chart showing balance by period from Jan 2010 to Dec 2010. Y-axis ranges from 0 to -250,000. Legend: bal.

Slide 8
Slide notes:

Account Key: 100000508 [Open New Account](#)

Ledger Account: 189-88-858-B [Acct Detail](#) Transaction Status: Open [Save](#)

Description: IMDED COSTS

Managed Currency: LOCAL \$ Account Type: 8.1 Ledger

Current Month: 9.00

Balance YTD: -249,678.26

Physical Resource

Phys Current

Phys YTD

HP Type

Hpl Current

Hpl YTD

[Data Driven Movement](#)

[Doc Audit Trail](#)

[History](#)

[Delete This Acct](#)

[Change Currency](#)

[Change Acct Type](#)

SINGLE SELECT: SELECT ITEM TO VIEW OR CANCEL

	DATE	TIME	OPERATOR
1	24/09/2010	10:47	Baccy
2	01/12/2006	16:01	Baccy

Select ALL Show FullLine Cancel OK

balance by period

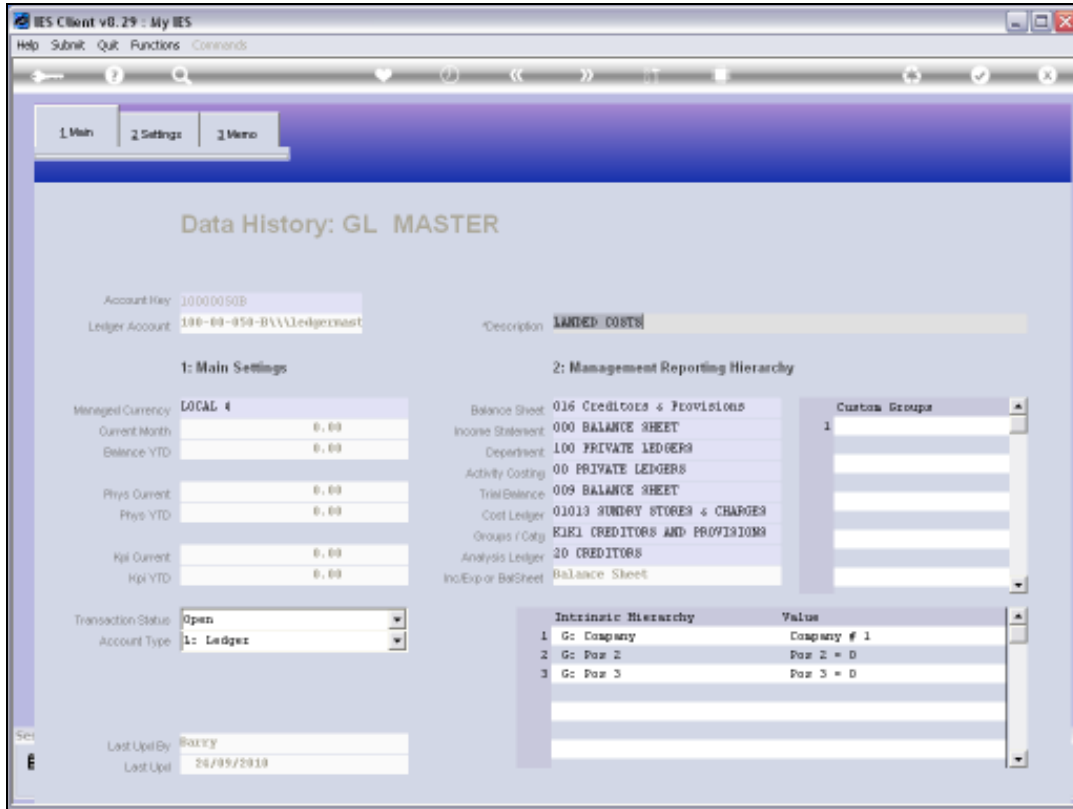
0 -50000 -100000 -150000 -200000 -250000

Jan 2010 Feb 2010 Mar 2010 Apr 2010 May 2010 Jun 2010 Jul 2010 Aug 2010 Sep 2010 Oct 2010 Nov 2010 Dec 2010

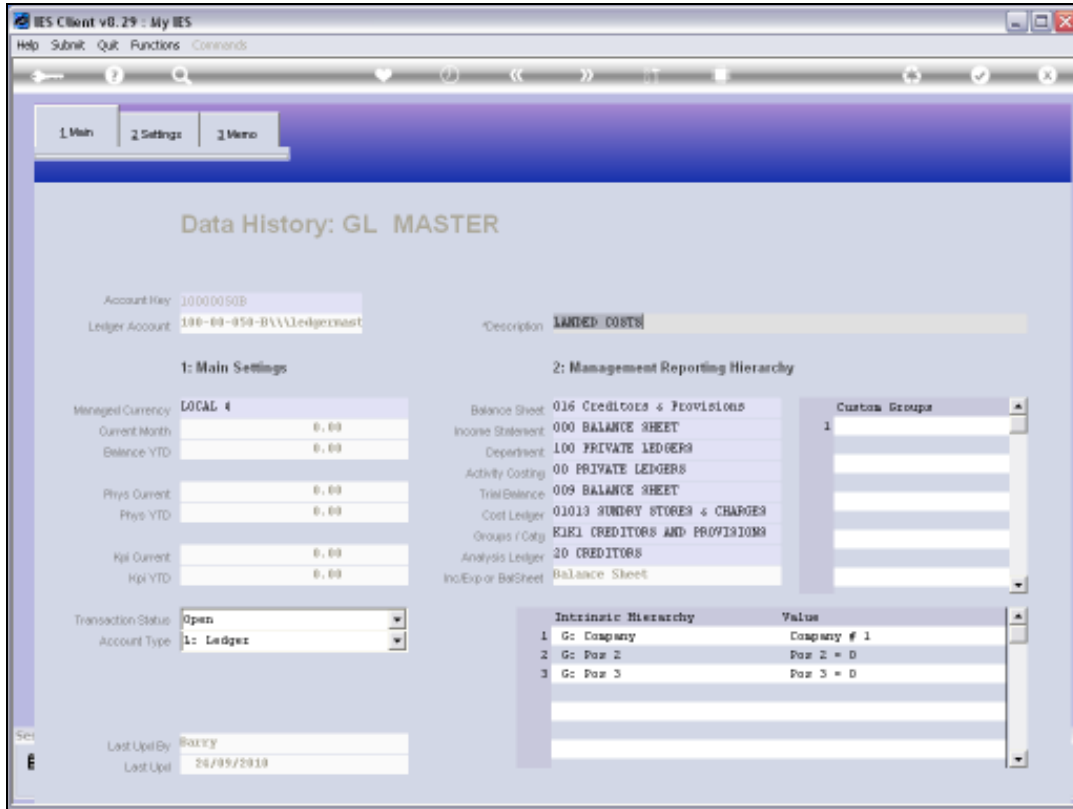
0 -50000 -100000 -150000 -200000 -250000

bal

Slide 9
Slide notes:



Slide 10
Slide notes:



Slide 11
Slide notes:

The screenshot displays the 'GENERAL LEDGER MASTER' window in the IES Client v8.29. The window title bar shows 'My IES' and various menu options like 'Help', 'InfoTab', 'Connections', 'Login', 'Logoff', 'Companion', 'Wizard', 'How do I', 'DataMarts', 'Business Modules', 'Action Focus', and 'Option Select'. The main content area is divided into several sections:

- Account Information:** Account Key: 100000508, Ledger Account: 100-00-050-B, Description: LARDED COSTS, Managed Currency: LOCAL #, Current Month: 9.00, Balance YTD: -249,679.26.
- Transaction Status:** Open (dropdown menu).
- Account Type:** 5.1 Ledger.
- Physical Resource:** Phys Current, Phys YTD, HP Type, HP Current, HP YTD.
- Actions:** Open New Account, Acc Detail, Save, Date Driven Movement, Day Audit Trail, History, Delete this Acct, Change Currency, Change Acct Type.

A modal window titled 'SINGLE SELECT: SELECT ITEM TO VIEW OR CANCEL' is overlaid on the screen. It contains a table with the following data:

	DATE	TIME	OPERATOR
1	24/09/2010	10:47	Baccy
2	01/12/2009	16:01	Baccy

Buttons at the bottom of the modal window include 'Select ALL', 'Show FullLine', 'Cancel', 'OK', and a search field.

Below the modal window is a 'balance by period' chart. The y-axis ranges from 0 to -250,000. The x-axis shows months from Jan 2010 to Dec 2010. A legend indicates 'bal' with a blue line.

Slide 12
Slide notes:

Account Key: 100000508 [Open New Account](#)
Ledger Account: 100-00-050-B [Acct Detail](#) Transaction Status: Open [Save](#)
Description: LAMDED COSTS
Managed Currency: LOCAL \$ Account Type: 5.1 Ledger
Current Month: 0.00
Balance YTD: -249,679.26
Physical Resource: [Data Drive Movement](#)
Phys Current: [Doc Audit Trail](#)
Phys YTD: [History](#)
PR Type: [Delete This Acct](#)
Hpl Current: [Change Currency](#)
Hpl YTD: [Change Acct Type](#)

SINGLE SELECT: SELECT ITEM TO VIEW OR CANCEL

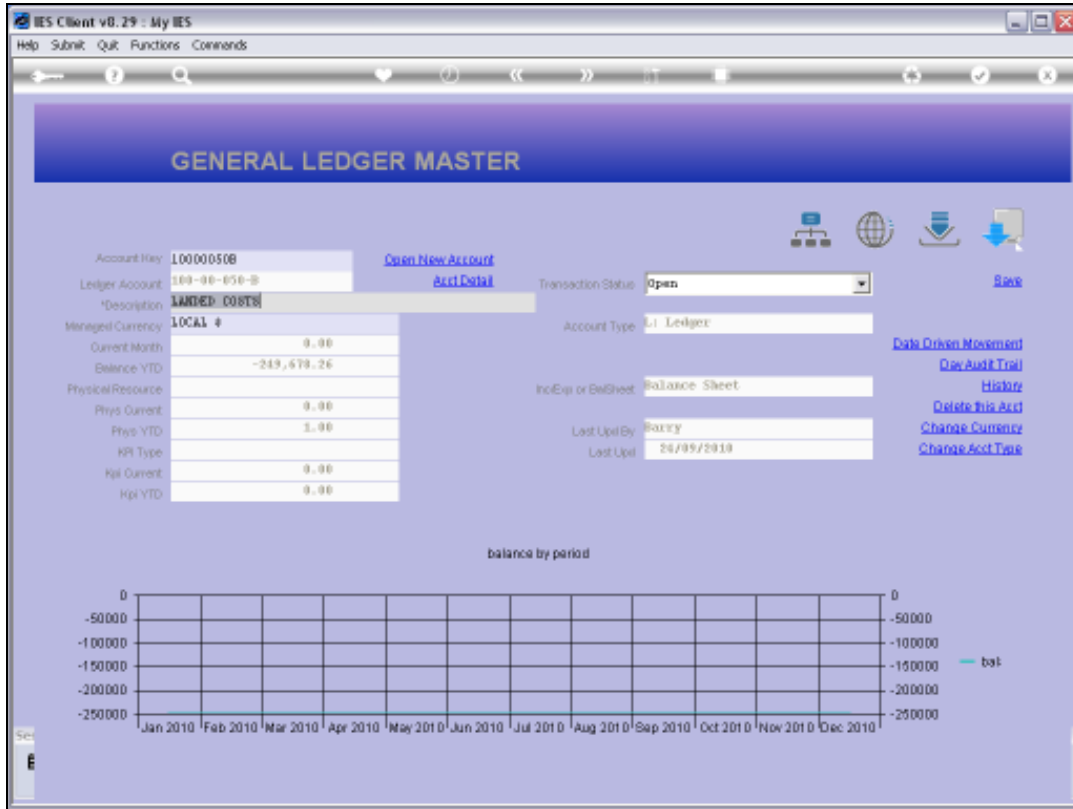
	DATE	TIME	OPERATOR
1	24/09/2010	10:47	Betty
2	01/12/2009	16:01	Betty

Select ALL Show FullLine Cancel OK

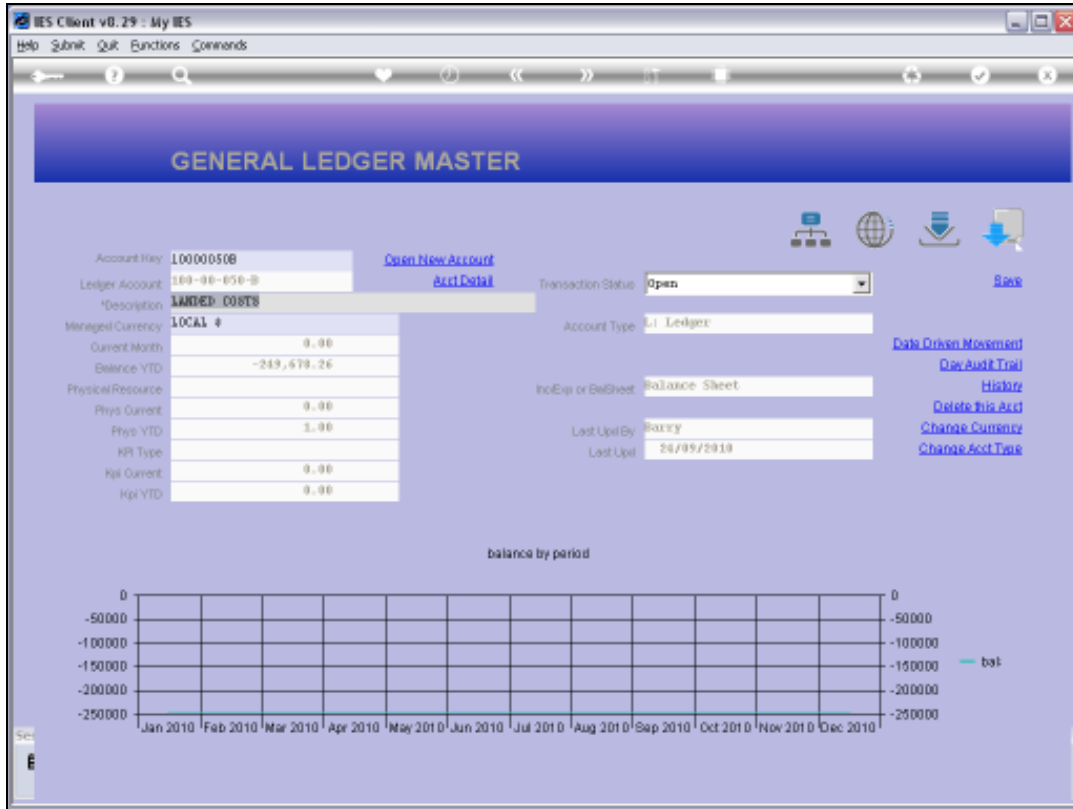
balance by period

Chart showing balance by period from Jan 2010 to Dec 2010. Y-axis ranges from 0 to -250,000. Legend: bal

Slide 13
Slide notes:



Slide 14
Slide notes:



Slide 15
Slide notes: