

**GENERAL LEDGER MASTER**

Account Key: 310110100100310037 [Open New Account](#)

Ledger Account: 3101101-00-1003-10037 [Acct Detail](#)

Description: ARBITRAN WAGES

Managed Currency: LOCAL

Transaction Status: Open [Save](#)

Account Type: LI Ledger

IncExp or BalSheet: Balance Sheet

Last Upd By: BOXXY

Last Upd: 11/03/2010

Balance Tables:

Current Month	0.00
Balance YTD	0.00
Phys Current	0.00
Phys YTD	0.00
Kpi Current	0.00
Kpi YTD	0.00

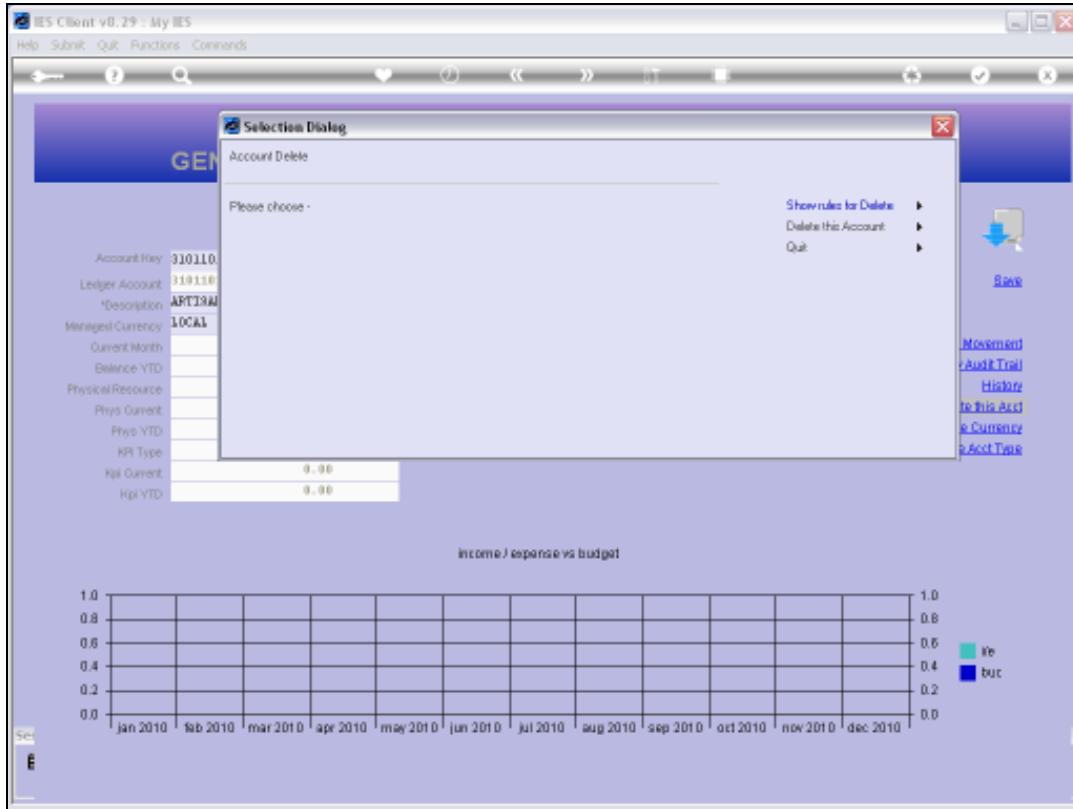
Links: [Data Driven Movement](#), [Gen Audit Trail](#), [History](#), [Delete this Acct](#), [Change Currency](#), [Change Acct Type](#)

Income / expense vs budget

Month	Inc	Exp	Budget
Jan 2010			
Feb 2010			
Mar 2010			
Apr 2010			
May 2010			
Jun 2010			
Jul 2010			
Aug 2010			
Sep 2010			
Oct 2010			
Nov 2010			
Dec 2010			

Slide 1

Slide notes: GL Accounts may be deleted if there is no on-line history and balances for the Account.



Slide 2

Slide notes: The primary 'Delete' function is found on the GL Master screen. We look at the rules first.

The screenshot shows the 'GENERAL LEDGER MASTER' window in IES Client v8.29. The main area contains the following information:

- Account Key: 310110100100910097 (with a link 'Open New Account')
- Ledger Account: 3101101-00-1003-10097 (with a link 'Acct Detail')
- Description: ARTISAN WAGES
- Transaction Status: Open (dropdown menu)
- Buttons: 'Back' and 'Print' (represented by a printer icon)

A modal window titled 'IES Client' is open, displaying the following text:

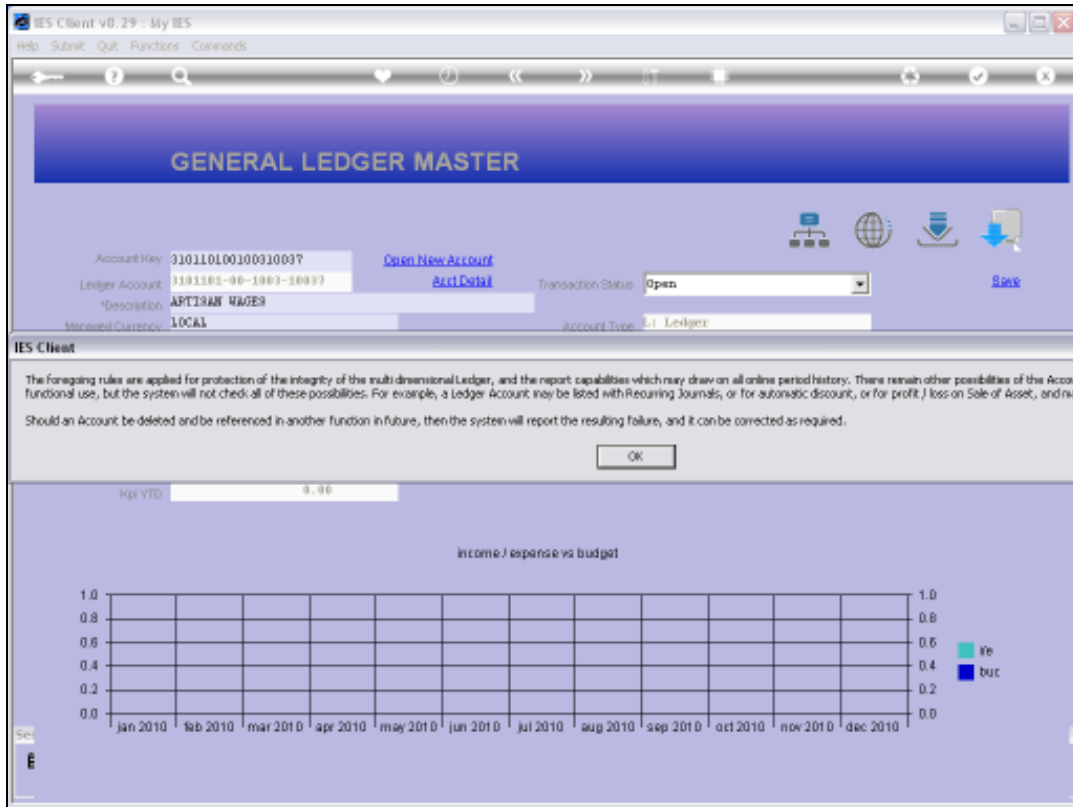
The rules for deleting of a GL Account are as follows:-

- 01) The Account must currently exist.
- 02) Your Ledger Profile must list the privilege to delete GL Accounts.
- 03) There must be no balance for the Account at the end of the most future period ever opened in the system in any of the ordered, committed, actual, trust, investment or force columns.
- 04) There must be no online transactions in the period history that has not yet been rolled out.
- 05) For Control Accounts of Sub Ledgers, there must be no linked dependents in the sub ledger.

Below the modal is a chart titled 'income / expense vs budget'. The chart has a grid with the x-axis representing months from Jan 2010 to Dec 2010 and the y-axis representing values from 0.0 to 1.0. A legend indicates 'inc' (income) in light blue and 'buc' (budget) in dark blue.

Slide 3

Slide notes: These are the rules that must be conformed to, else the Account cannot be deleted at this time.



Slide 4  
Slide notes:

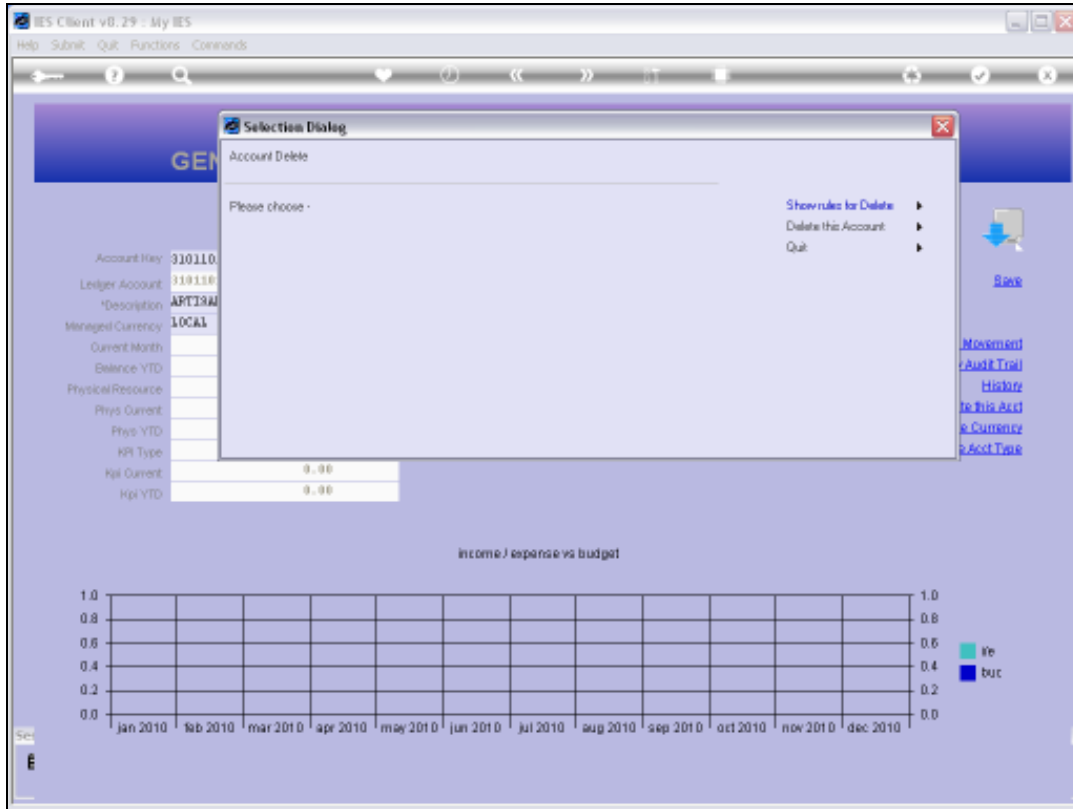
**GENERAL LEDGER MASTER**

Account Key: 310110100100910097 [Open New Account](#)  
Ledger Account: 1191101-00-1000-10007 [Acct Detail](#) Transaction Status:  [Save](#)  
Description: **ARTISAN WAGES**  
Managed Currency: LOCAL Account Type:  [Data Drive Movement](#)  
Current Month: 0.00 [Doc Audit Trail](#)  
Balance YTD: 0.00 [History](#)  
Physical Resource: [Create This Acct](#)  
Phys Current: 0.00 [Change Currency](#)  
Phys YTD: 0.00 [Change Acct Type](#)  
HR Type:   
HR Current: 0.00  
HR YTD: 0.00  
Inc/Exp or BalSheet:   
Last Upd By:   
Last Upd:

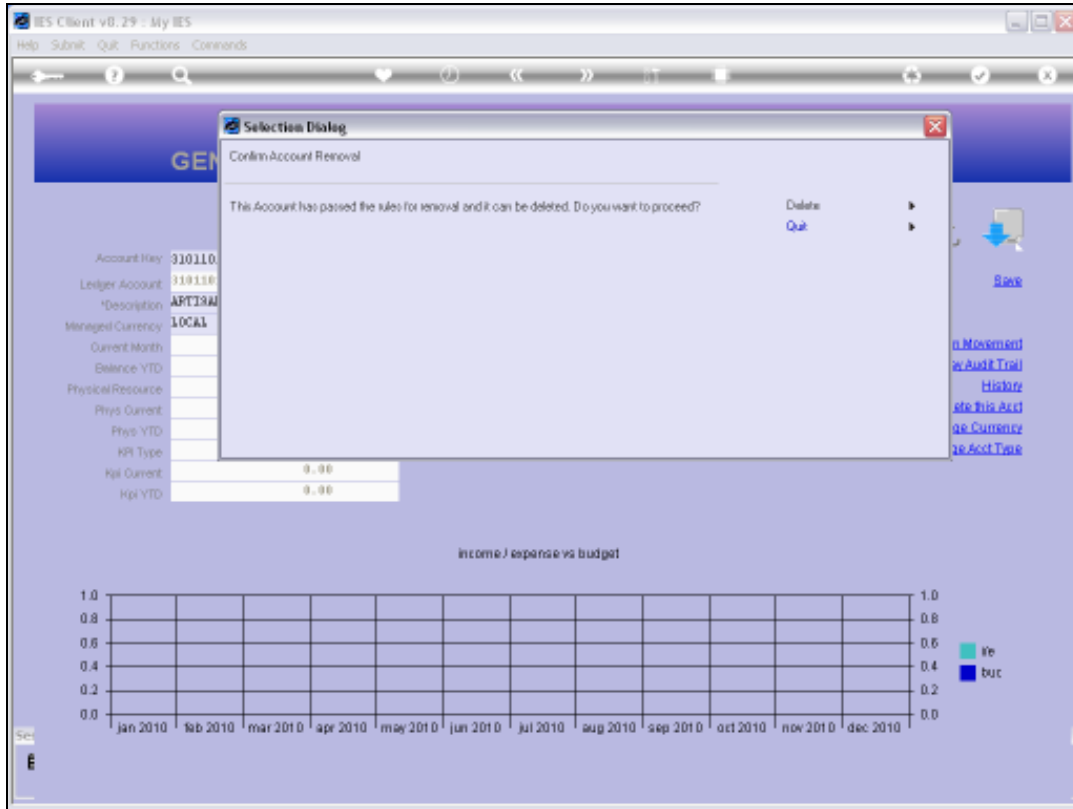
income / expense vs budget

Month	Actual	Budget
Jan 2010		
Feb 2010		
Mar 2010		
Apr 2010		
May 2010		
Jun 2010		
Jul 2010		
Aug 2010		
Sep 2010		
Oct 2010		
Nov 2010		
Dec 2010		

Slide 5  
Slide notes:

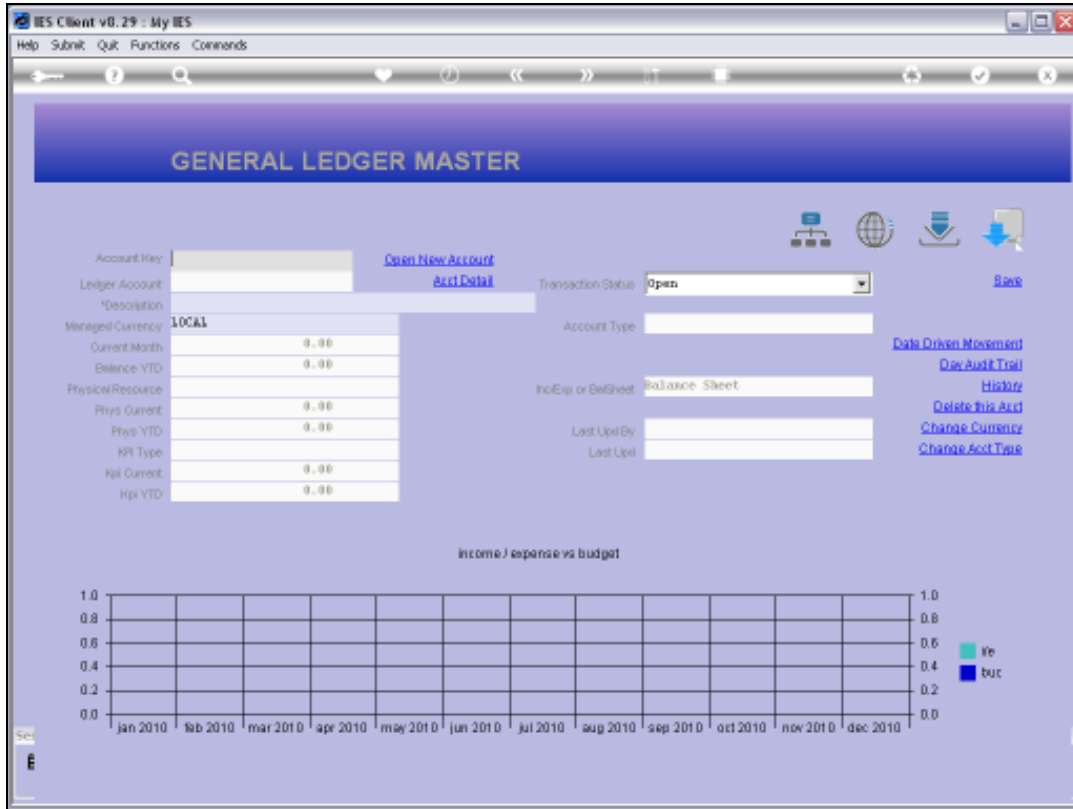


Slide 6  
Slide notes:



Slide 7

Slide notes: If all rules are passed, then the Account may be deleted.



Slide 8  
Slide notes:



Slide 9  
Slide notes: