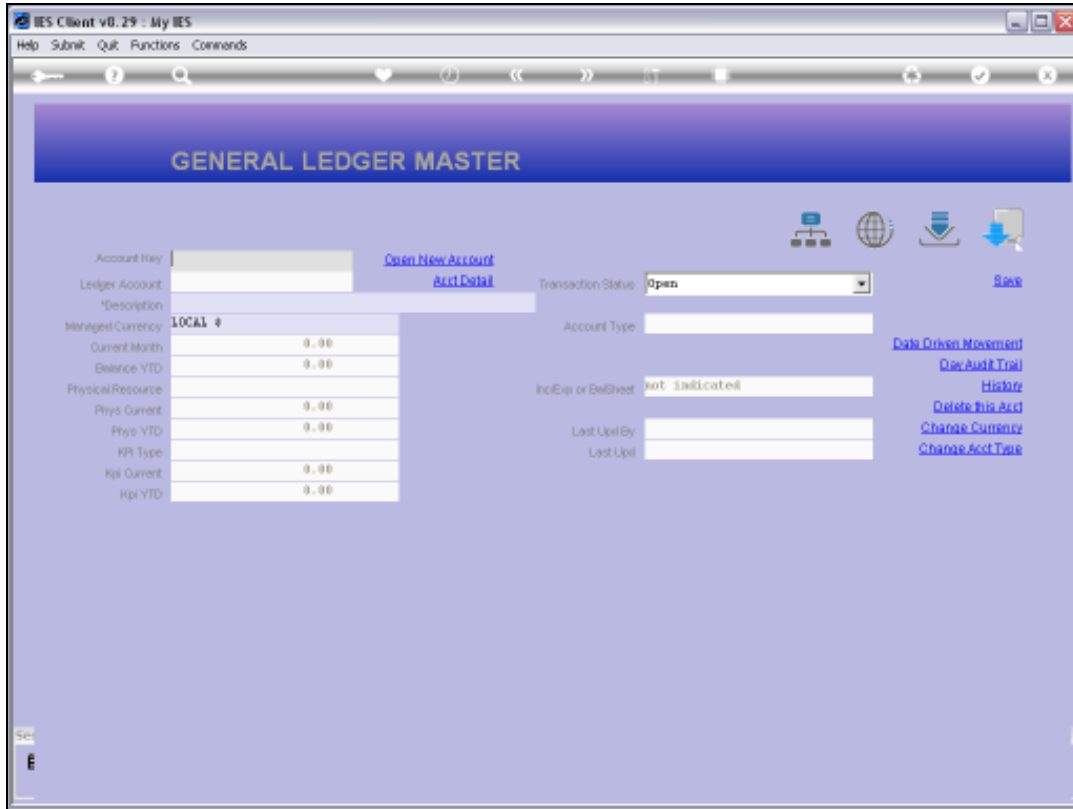
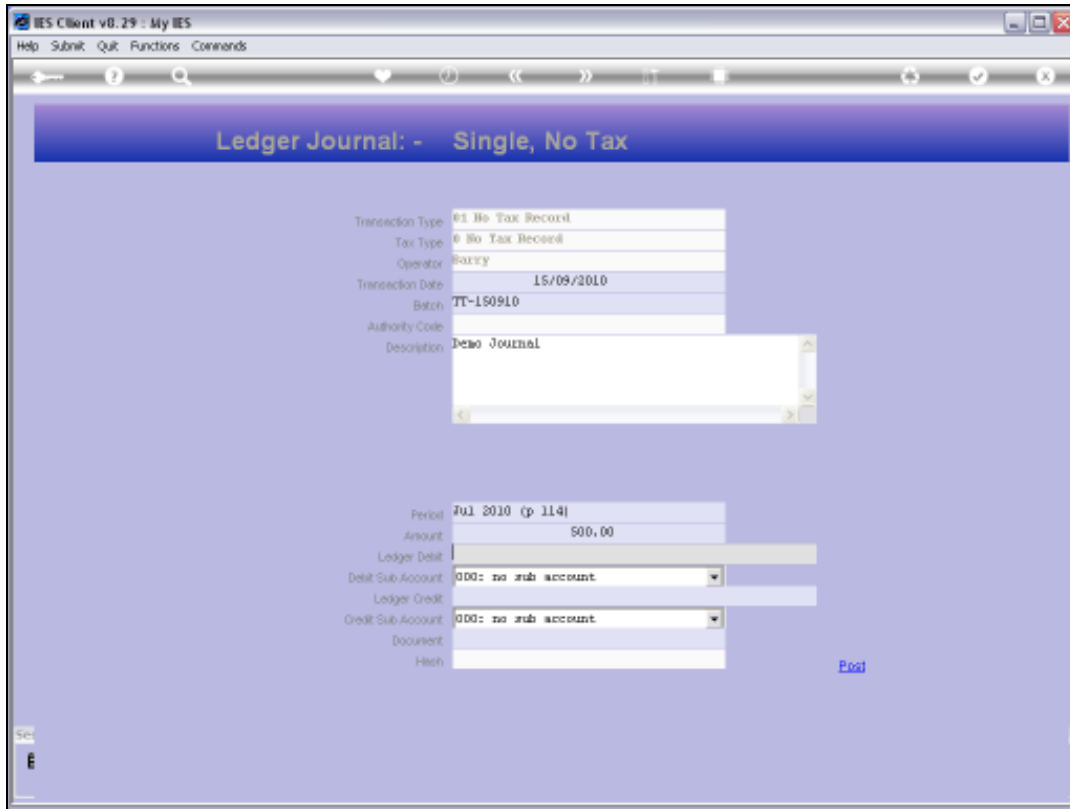


Slide 1

Slide notes: Where do we use the GL Account Code lookup methods? We use it on the Ledger Master.



Slide 2
Slide notes:



Slide 3

Slide notes: And we use it on Journals.

The screenshot shows a web application window titled "IES Client v8.29 : My IES". The main content area is titled "Ledger Journal: - Single, No Tax". The form contains the following fields:

Transaction Type	01 No Tax Record
Tax Type	0 No Tax Record
Operator	RAJY
Transaction Date	15/09/2010
Batch	TT-150910
Authority Code	
Description	Demo Journal
Period	Jul 2010 (p 114)
Amount	500.00
Ledger Debit	
Debit Sub Account	000: no sub account
Ledger Credit	
Credit Sub Account	000: no sub account
Document	
Hash	

There is a "Print" link in the bottom right corner of the form area.

Slide 4
Slide notes:

IES Client v8.29 : My IES
Help Submit Quit Functions Commands

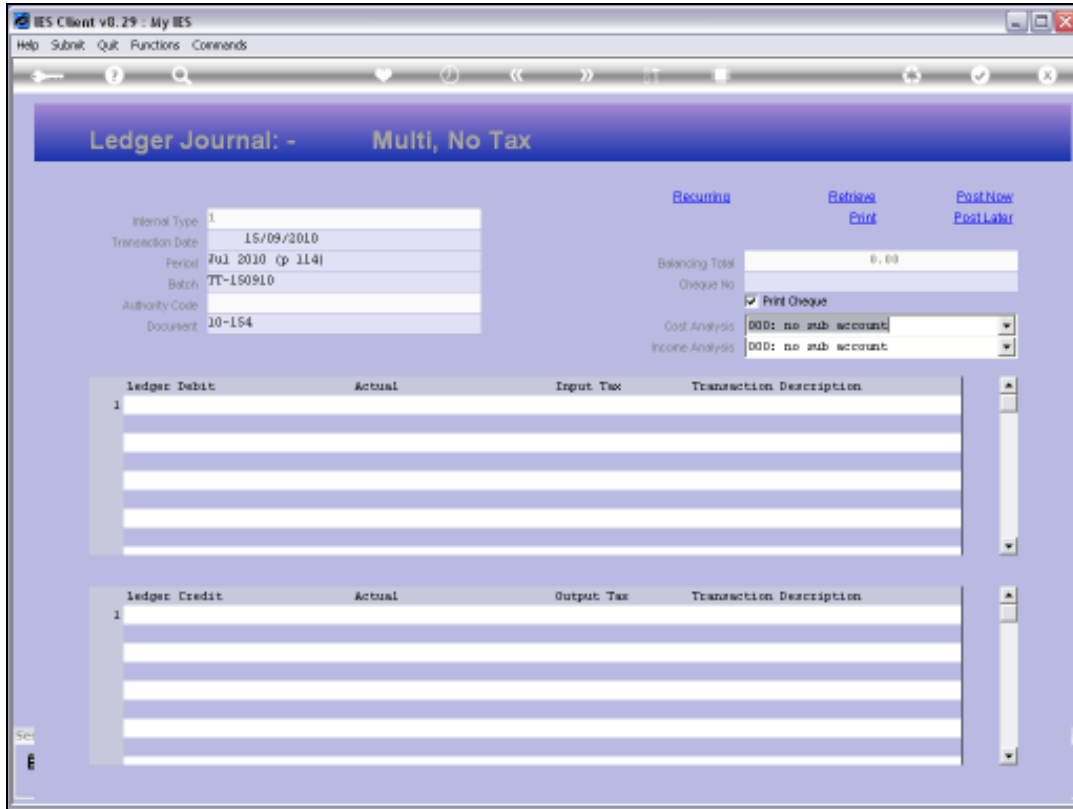
Ledger Journal: - Single, No Tax

Transaction Type	01 No Tax Record
Tax Type	0 No Tax Record
Operator	RARRY
Transaction Date	15/09/2010
Batch	TT-150910
Authority Code	
Description	Demo Journal

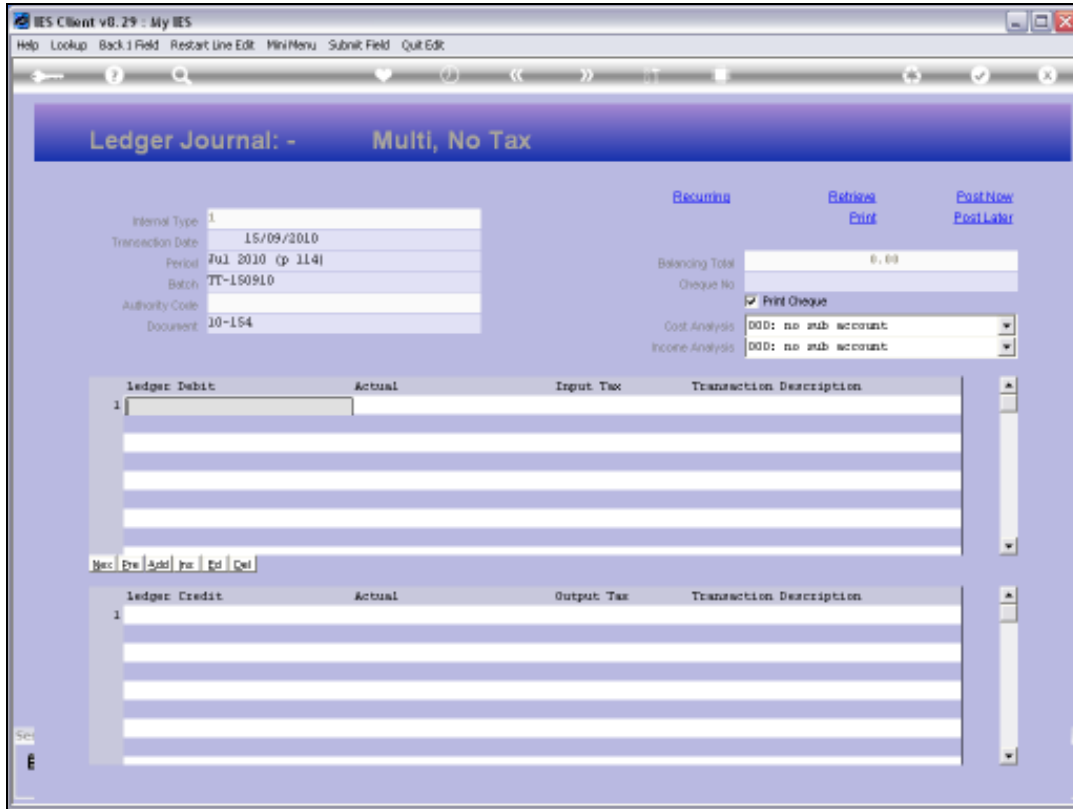
Period	Jul 2010 (p 114)
Amount	500.00
Ledger Debit	
Debit Sub Account	000: no sub account
Ledger Credit	
Credit Sub Account	000: no sub account
Document	
Hash	

[End](#)

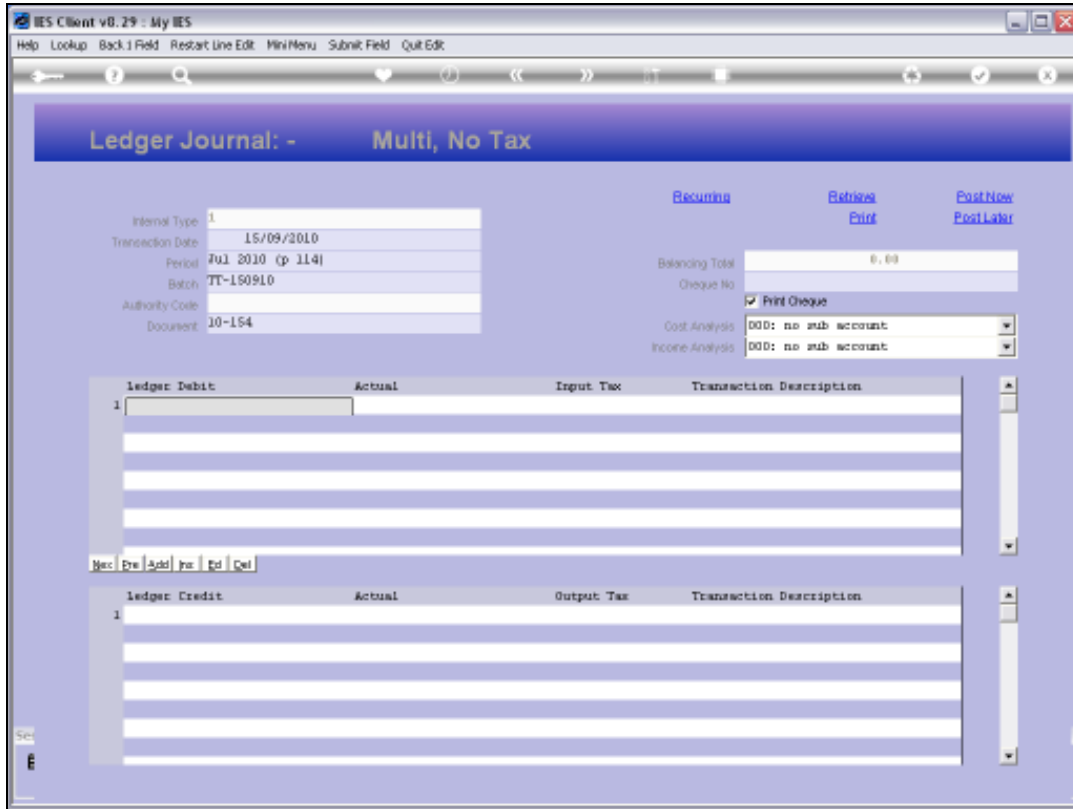
Slide 5
Slide notes:



Slide 6
Slide notes:

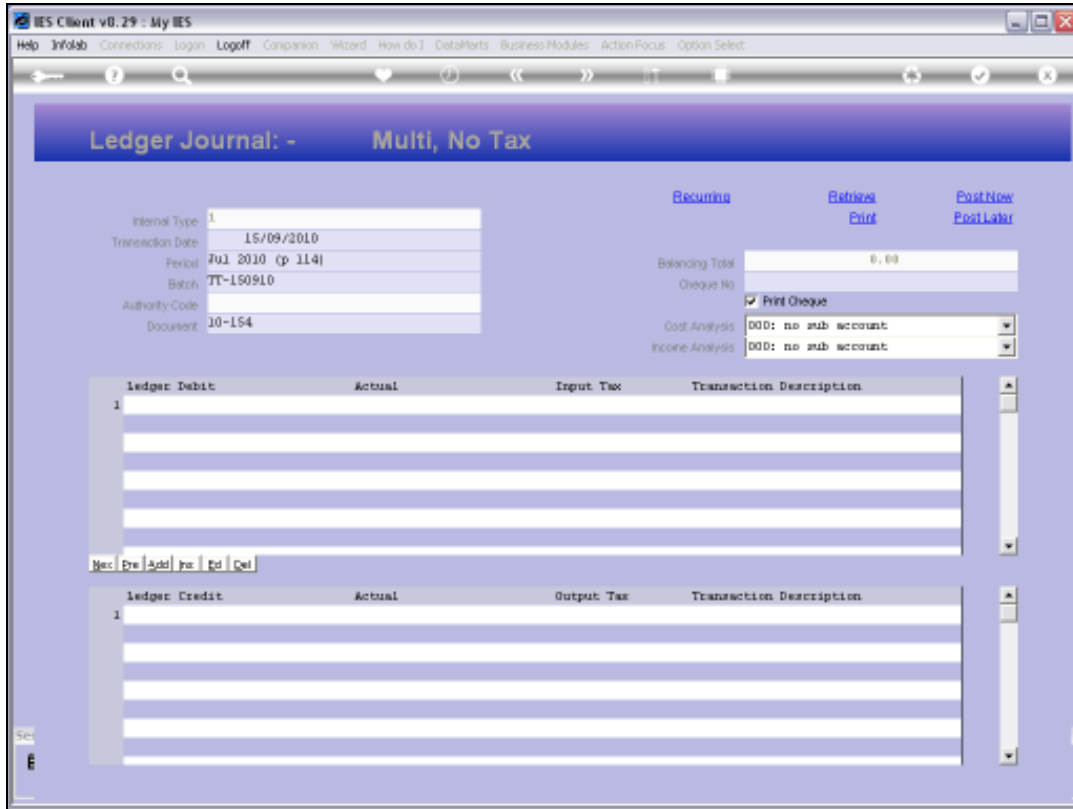


Slide 7
Slide notes:

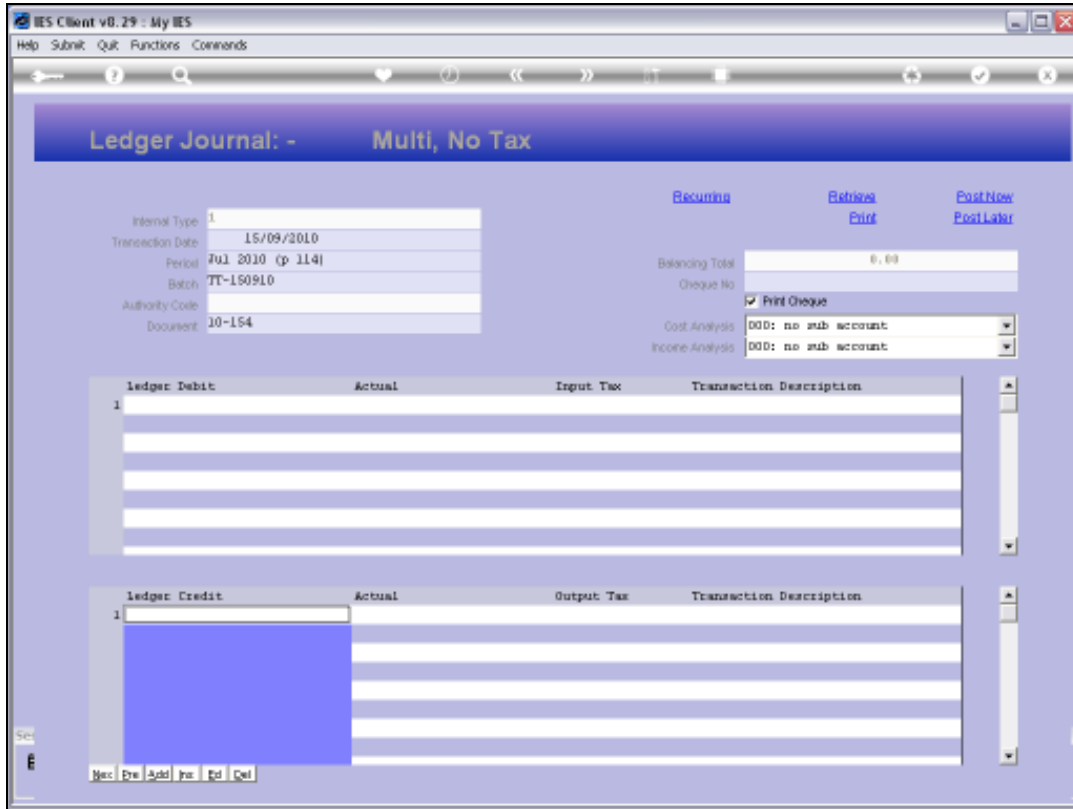


Slide 8

Slide notes: And we can use it anywhere in the system where a field calls for a GL Account Code.



Slide 9
Slide notes:



Slide 10
Slide notes: