

Slide 1

Slide notes: The generic Lookup for Ledger Account Codes will search for Accounts by Name.



Slide 2
Slide notes:

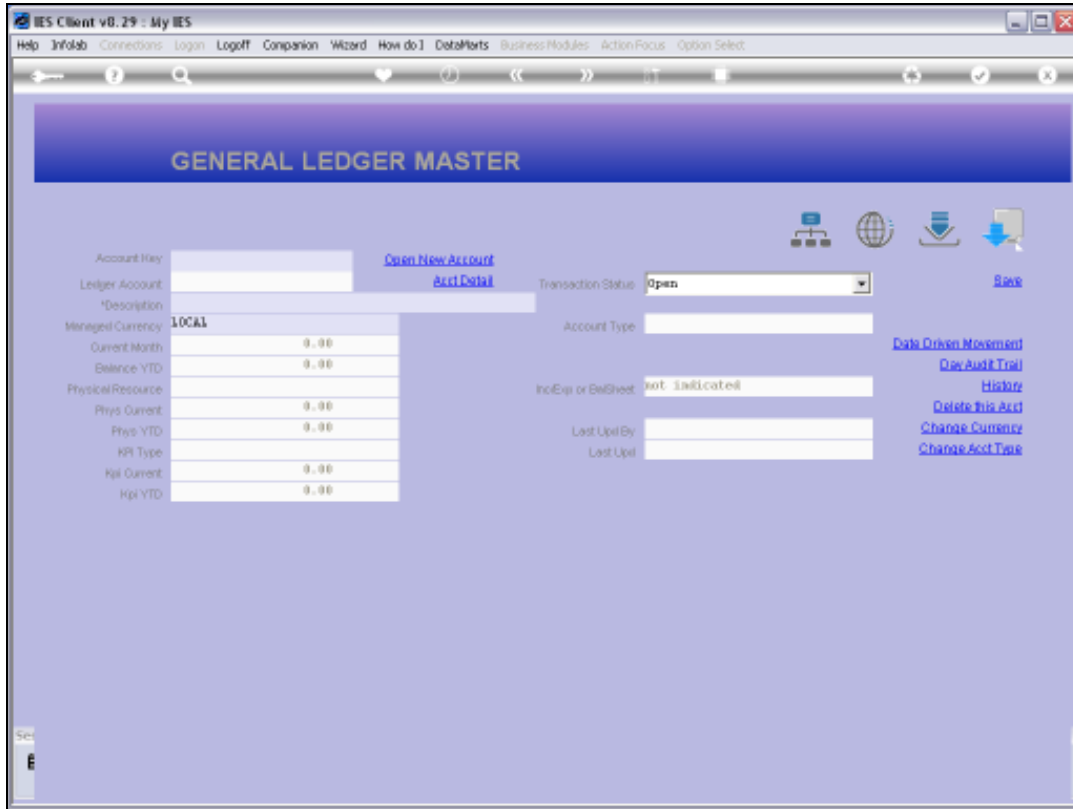


Slide 3
Slide notes:

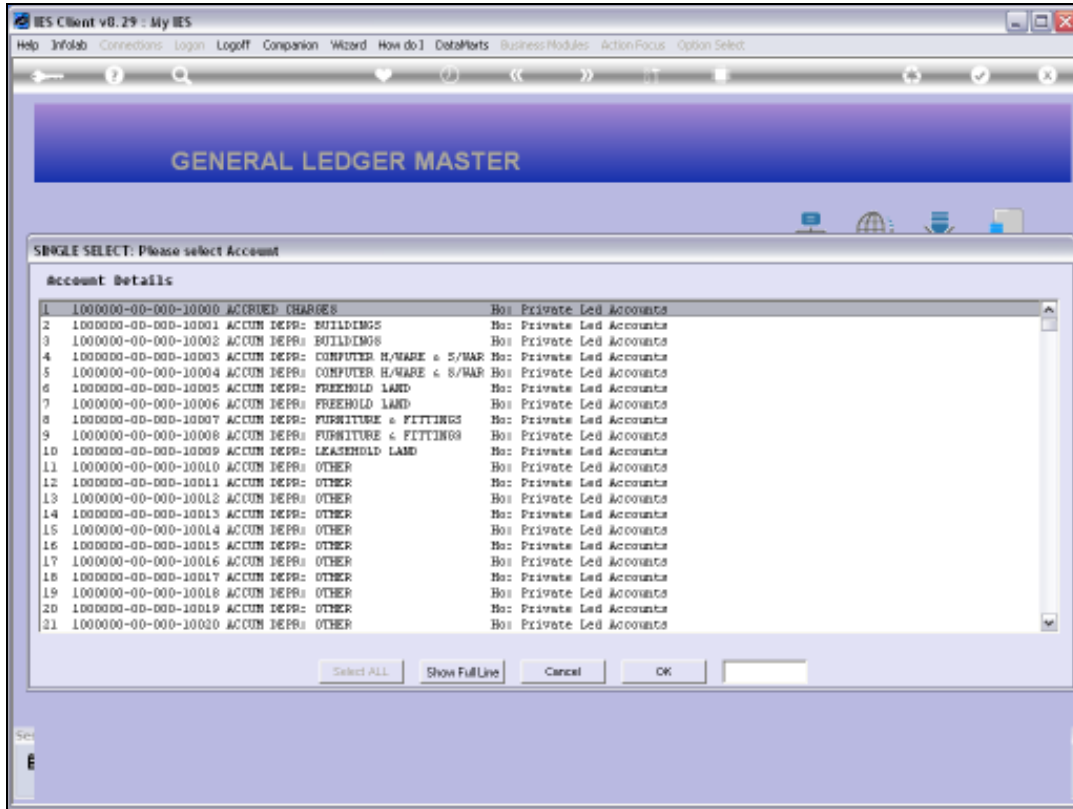


Slide 4

Slide notes: If we accept the default wildcards, then the lookup searches for Account Names in alphabetical order.

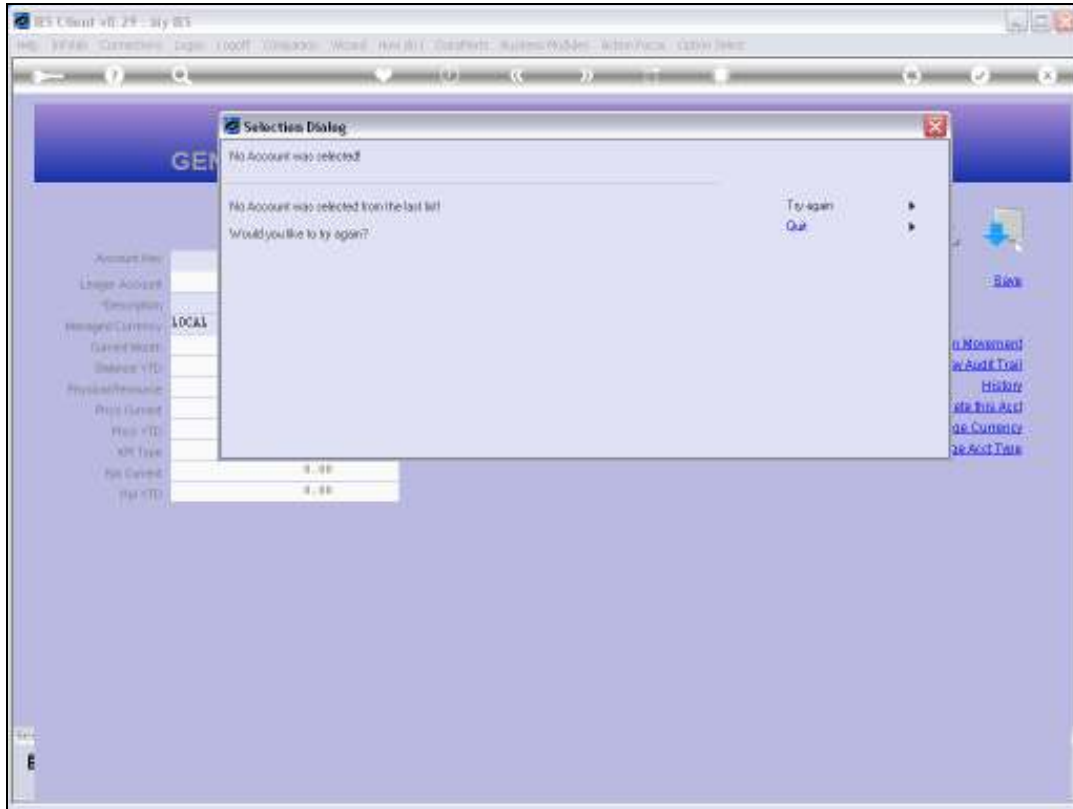


Slide 5
Slide notes:

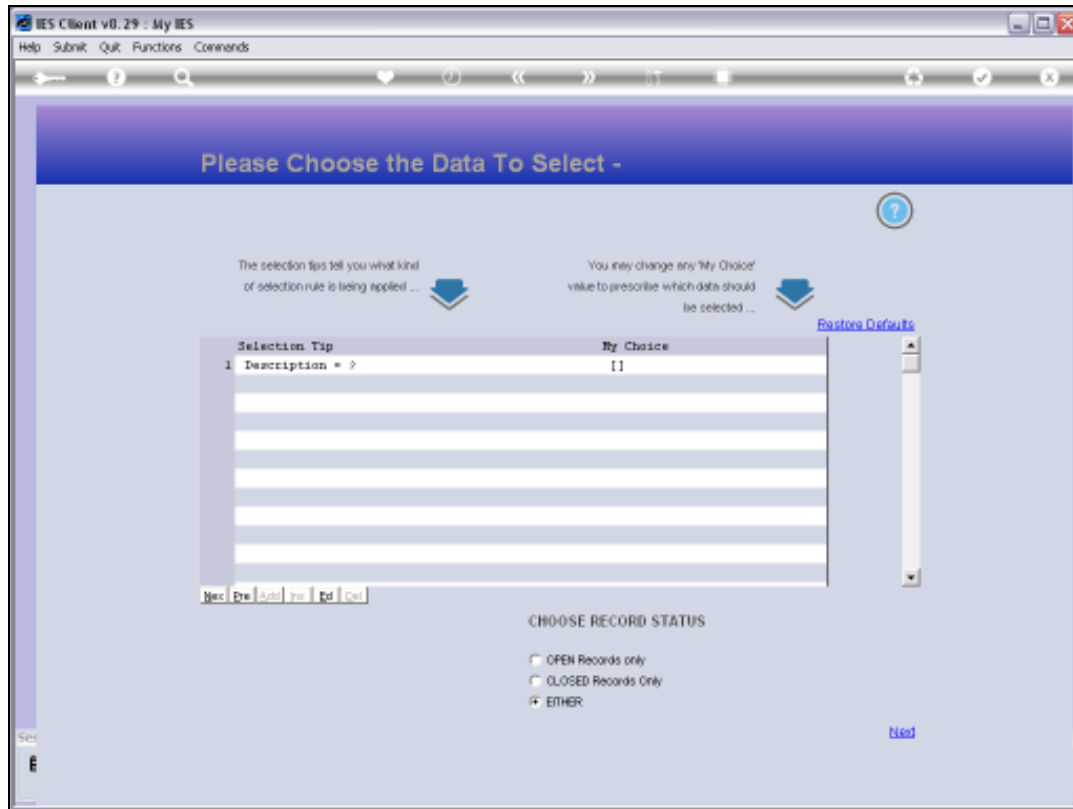


Slide 6

Slide notes: What is worth noting here, is that the lookup will never offer more than 1,000 entries on a lookup list. So if the Ledger is bigger than 1,000 Accounts, then the first 1,000 in the alphabetical sequence are shown.

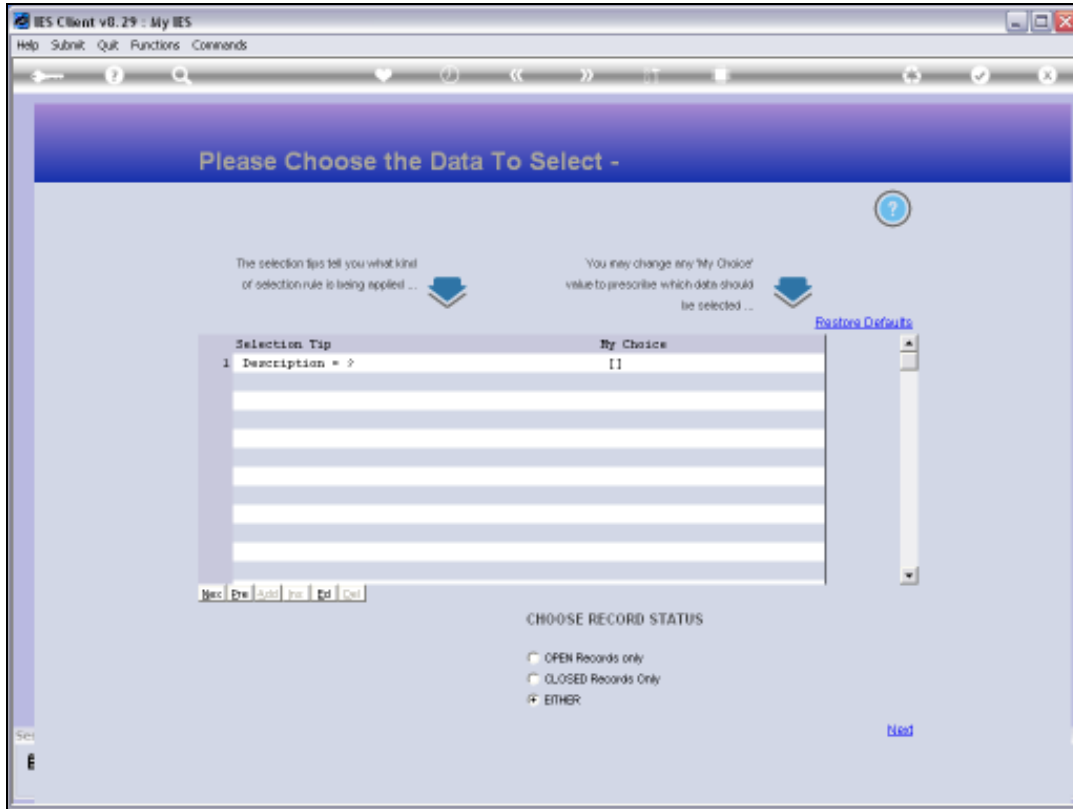


Slide 7
Slide notes:

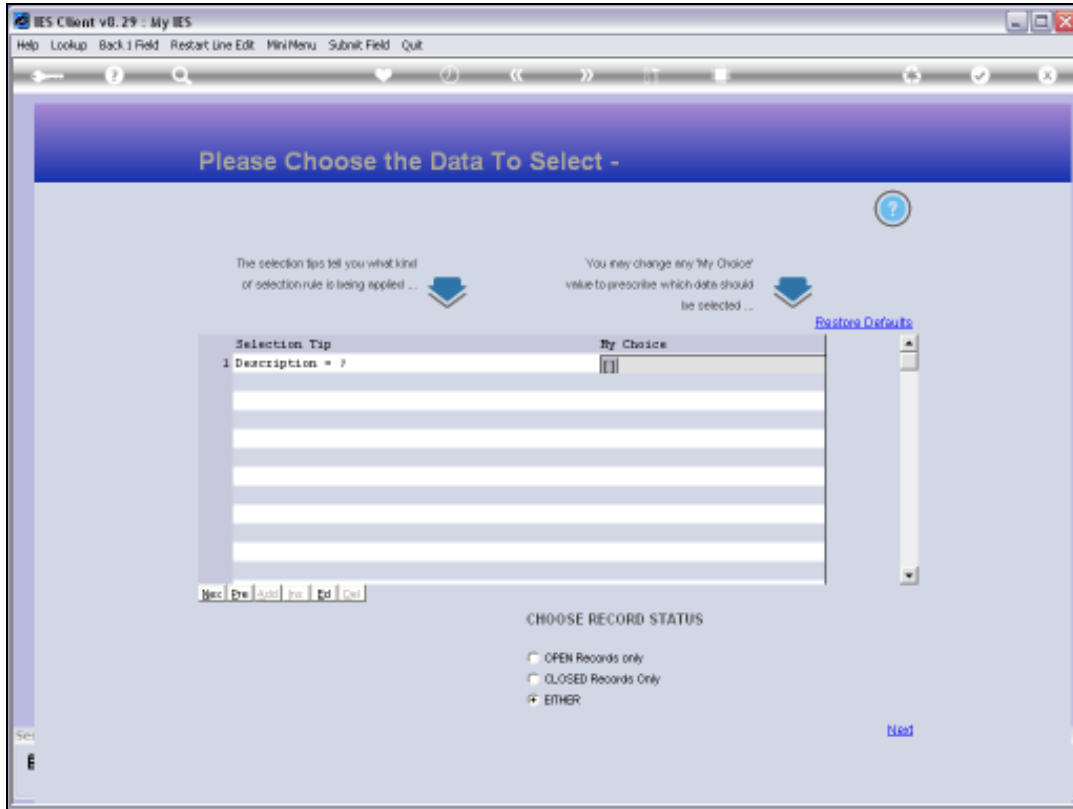


Slide 8

Slide notes: Therefore, when using this method, it is preferable to indicate something to search for, so that the focus can be on the target Accounts, and a more efficient and shorter result list can be produced.

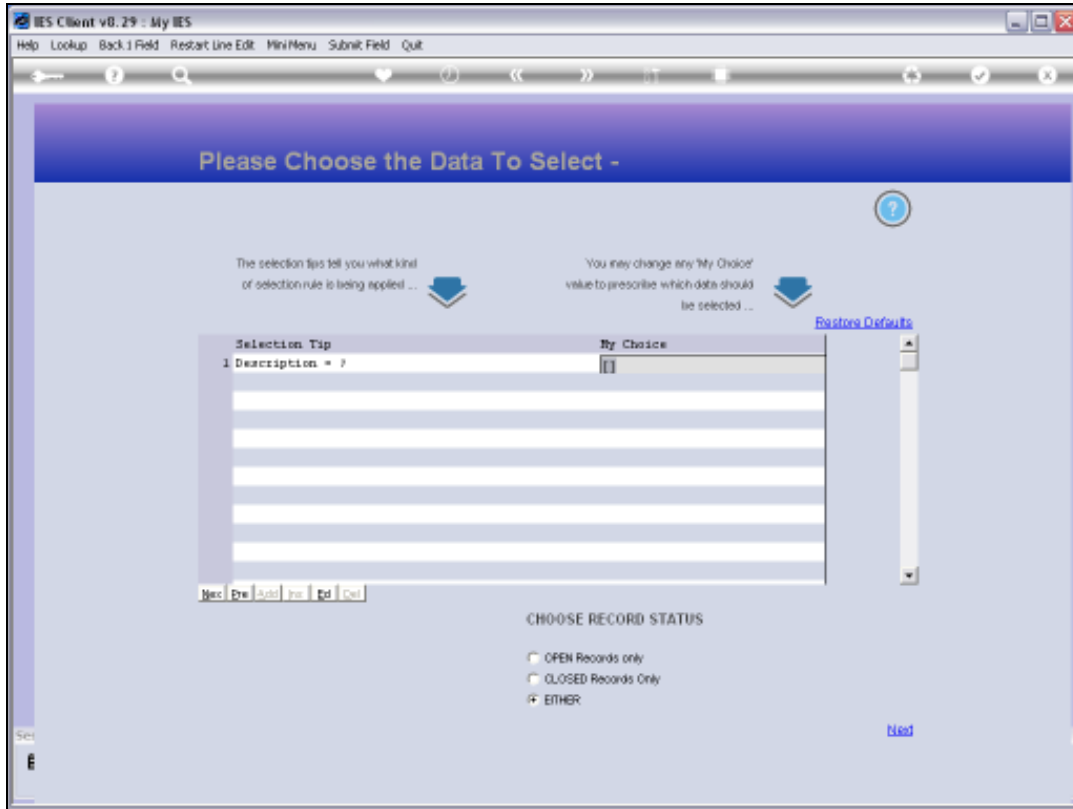


Slide 9
Slide notes:



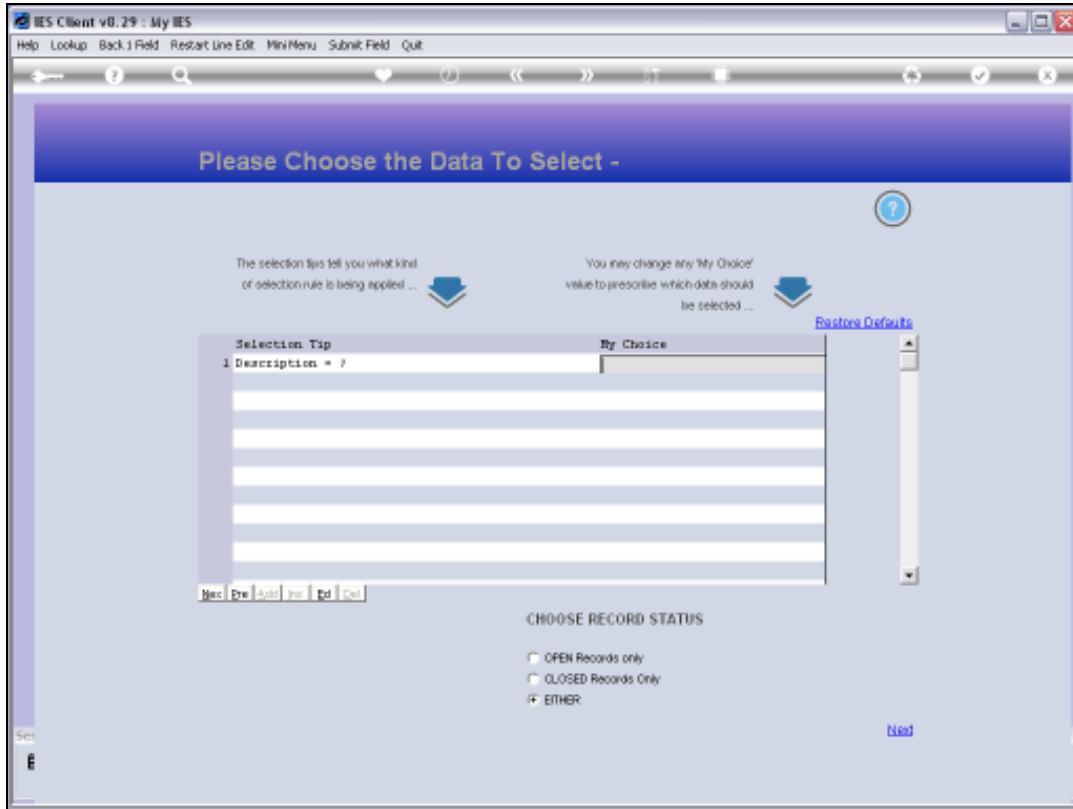
Slide 10

Slide notes:

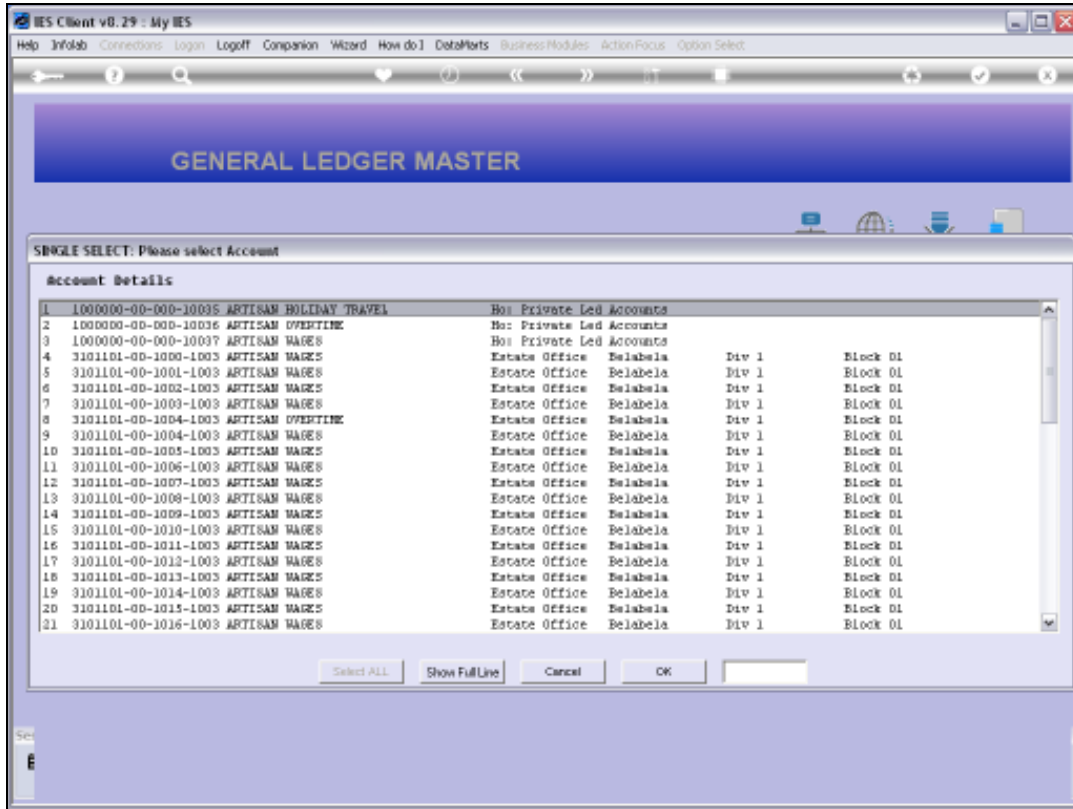


Slide 11

Slide notes: By including a word within the wildcards, we will now only get Accounts where that word appears somewhere in the Account Name.

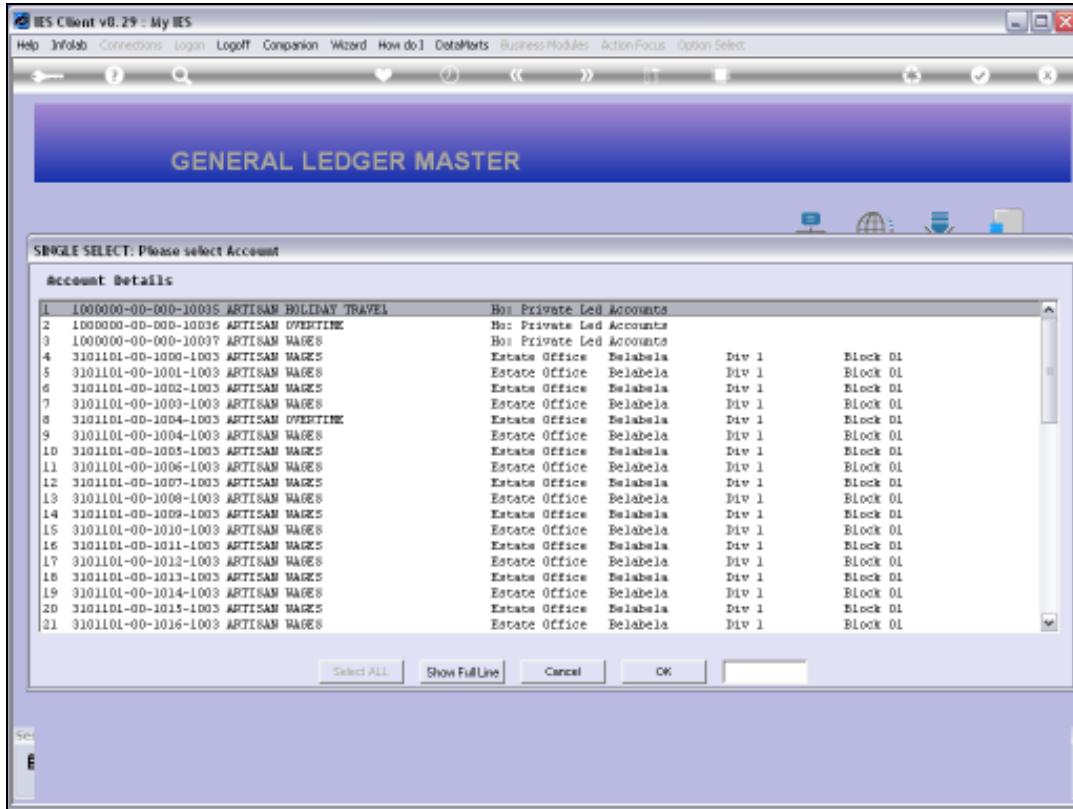


Slide 12
Slide notes:

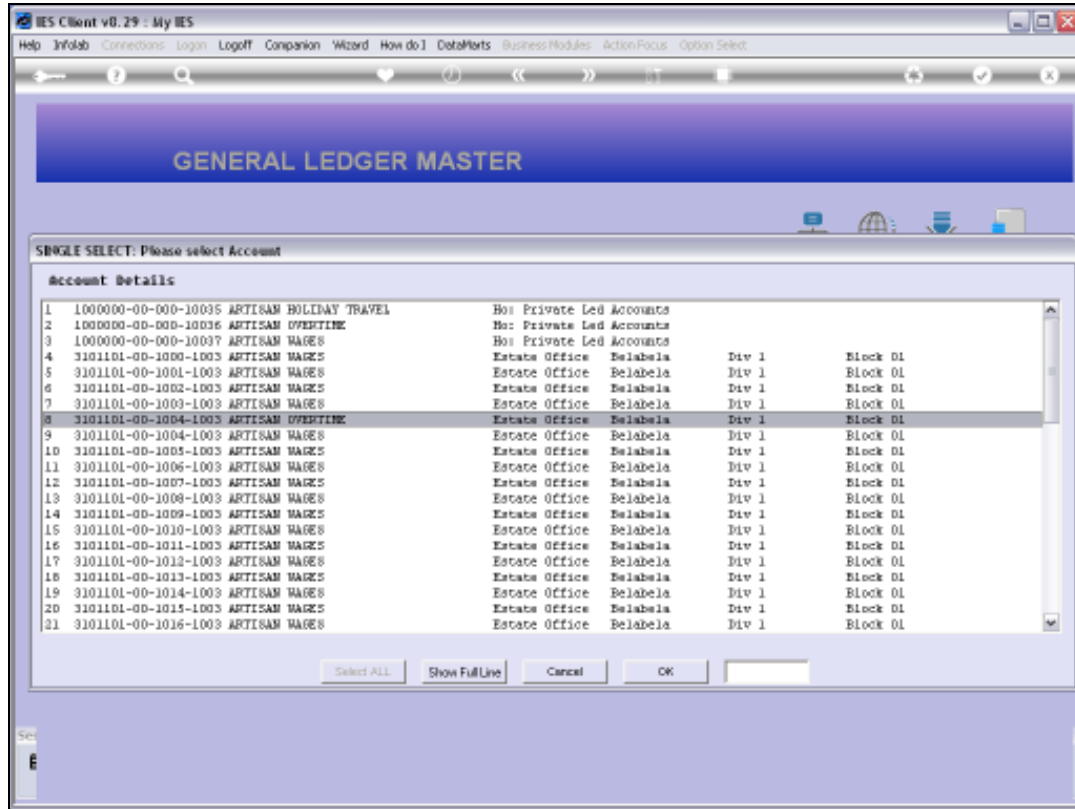


Slide 13

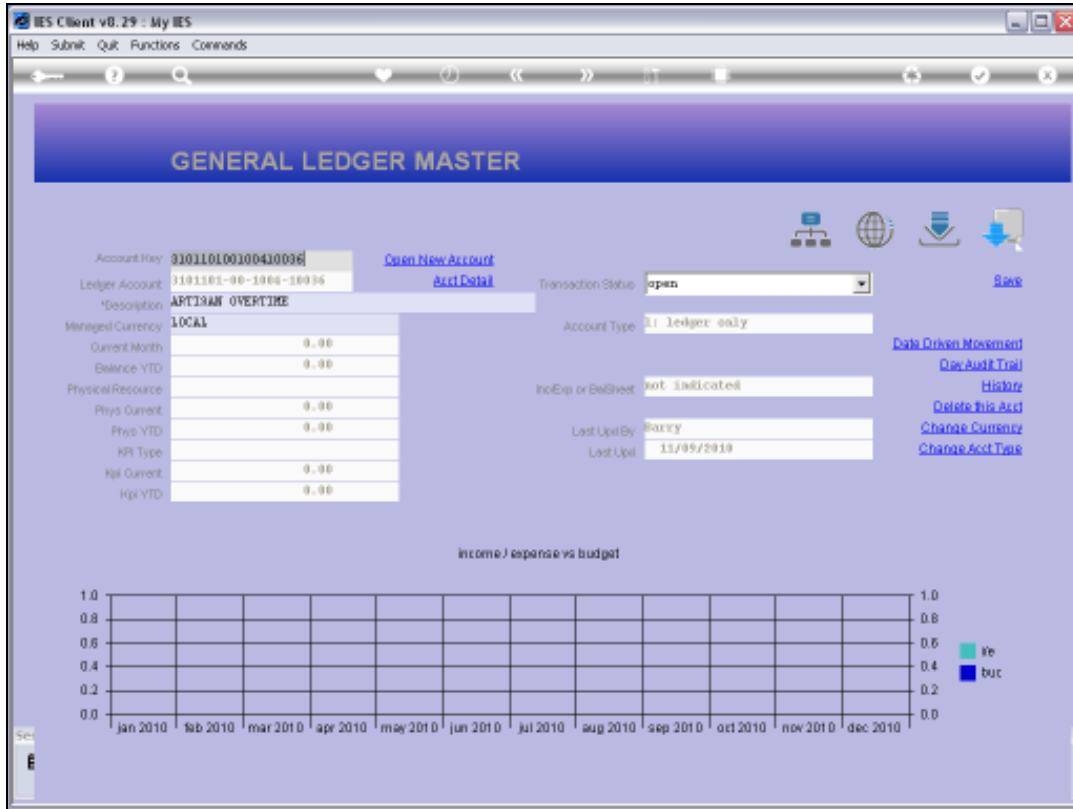
Slide notes: All of these Accounts include the word 'artisan', and it is now easier to find and select the Account we are looking for.



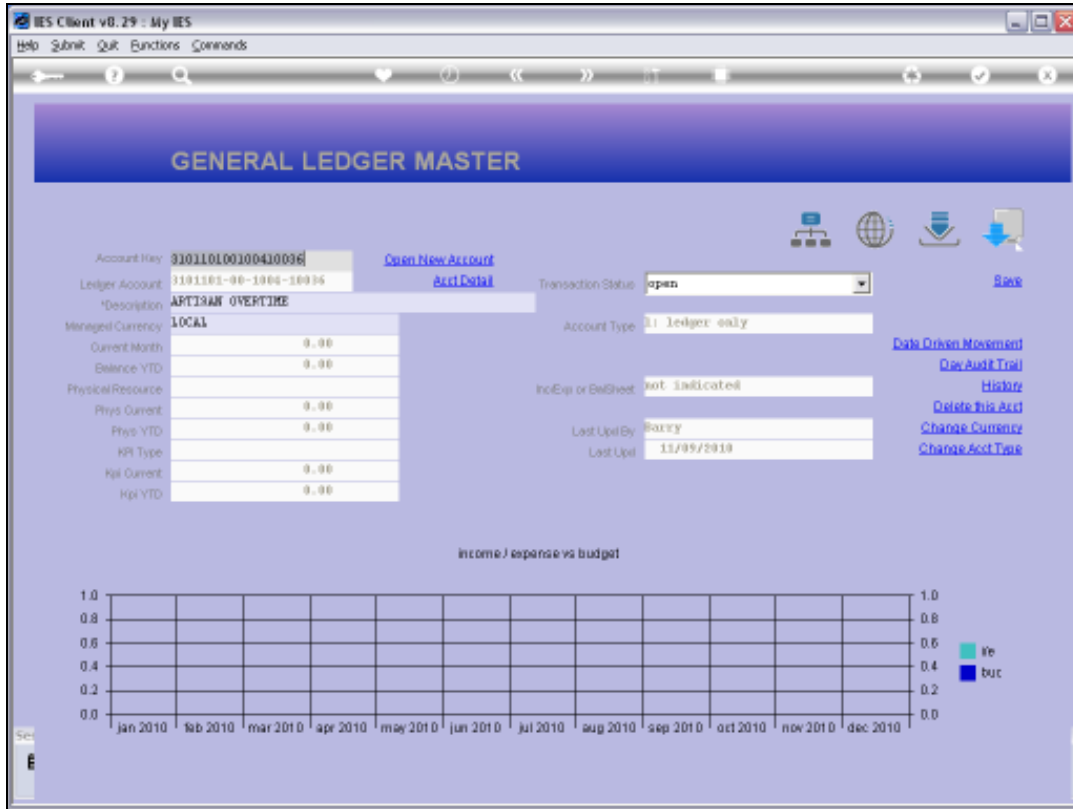
Slide 14
Slide notes:



Slide 15
Slide notes:



Slide 16
Slide notes:



Slide 17
Slide notes: