

Account Key: [Open New Account](#)

Ledger Account: [Acct Detail](#)

Description:

Managed Currency: LOCAL

Current Month	0.00
Balance YTD	0.00
Physical Resource	
Phys Current	0.00
Pris YTD	0.00
KR Type	
Kpl Current	0.00
Kpl YTD	0.00

Transaction Status: [Save](#)

Account Type:

InclExp or BalSheet:

Last Upd By:

Last Upd:

[Data Driven Movement](#)

[Get Audit Trail](#)

[History](#)

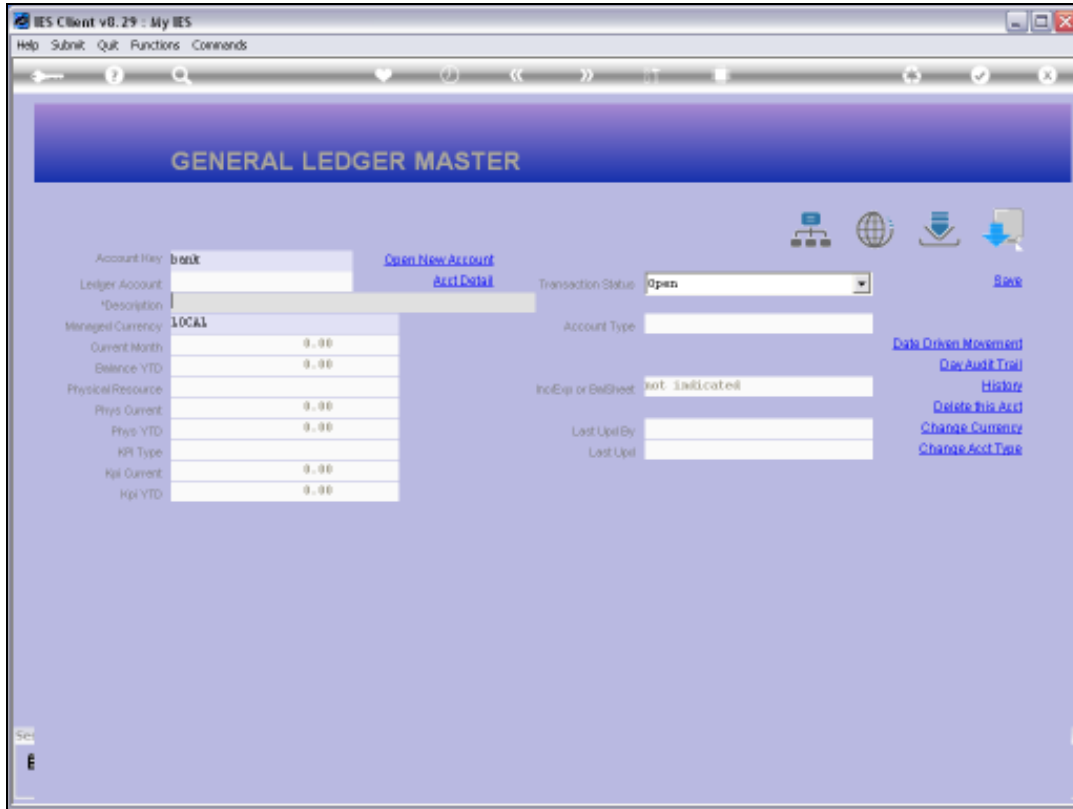
[Delete this Acct](#)

[Change Currency](#)

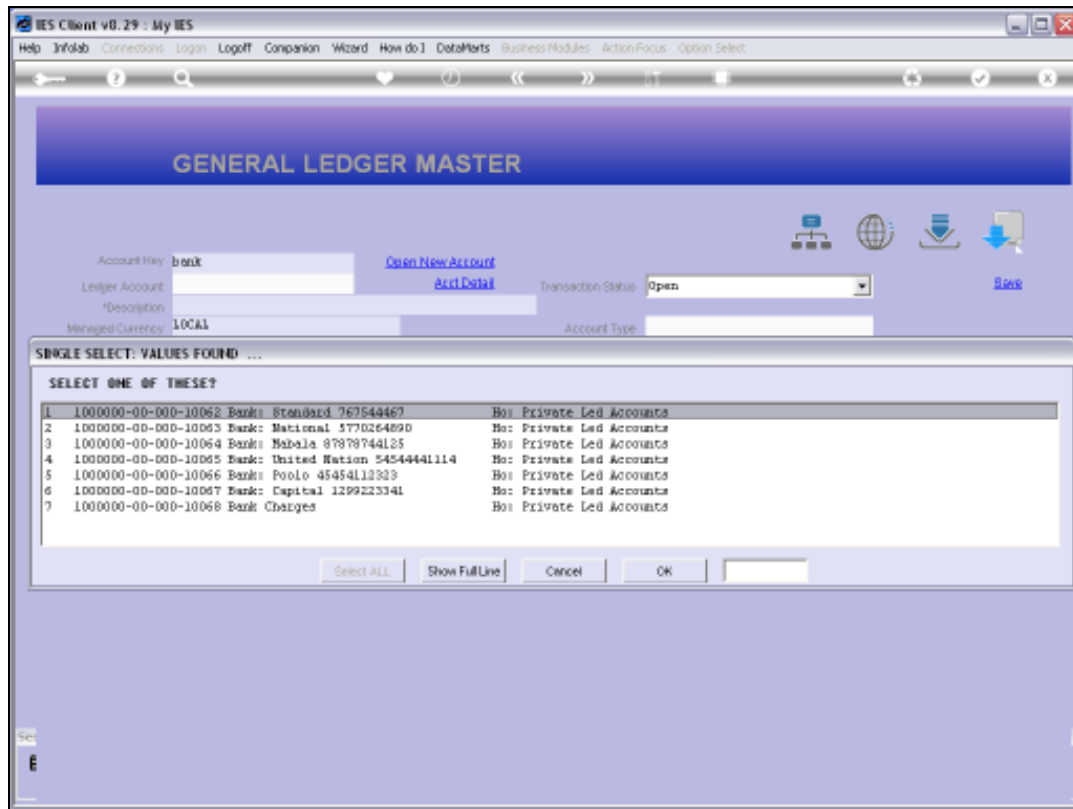
[Change Acct Type](#)

Slide 1

Slide notes: An easy intuitive method for finding an Account is to type a word or string that is expected to be part of the Account Name.

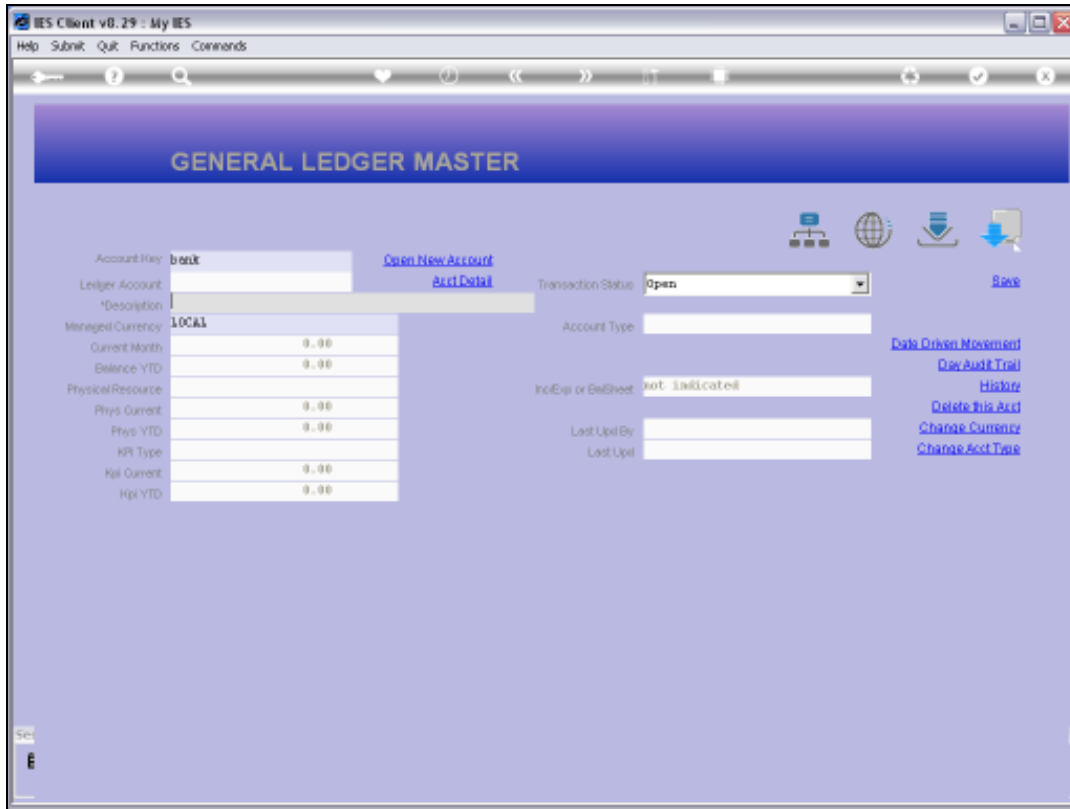


Slide 2
Slide notes:



Slide 3

Slide notes: By typing the word 'bank', we now have a list of Accounts to choose from, all including the word 'bank'.



Slide 4
Slide notes:

GENERAL LEDGER MASTER

Account Key: 1000000000010064 [Open New Account](#)
Ledger Account: 1000000-00-000-10064 [Acct Detail](#) Transaction Status: open [Save](#)
Description: BANK: HabaLe 87878744125
Managed Currency: LOCAL Account Type: 01 ledger only [Data Drive Movement](#)
Current Month: 0.00 [Doc Audit Trail](#)
Balance YTD: 0.00 [History](#)
Physical Resource: Inc/Exp or BalSheet: not indicated [Delete This Acct](#)
Phys Current: 0.00 [Change Currency](#)
Phys YTD: 0.00 [Change Acct Type](#)
PR Type: Last Upd By: Barry
Hpl Current: 0.00 Last Upd: 15/09/2010
Hpl YTD: 0.00

income / expense vs budget

Month	Actual	Budget
Jan 2010		
Feb 2010		
Mar 2010		
Apr 2010		
May 2010		
Jun 2010		
Jul 2010		
Aug 2010		
Sep 2010		
Oct 2010		
Nov 2010		
Dec 2010		

Slide 5
Slide notes: