

IES Client v0.29: My IES

Help Submit Quit Functions Commands

GENERAL LEDGER MASTER

Account Key:  [Open New Account](#)

Ledger Account:  [Acct Detail](#)

Description:

Managed Currency: LOCAL

Current Month	0.00
Balance YTD	0.00
Physical Resource	
Phys Current	0.00
Phys YTD	0.00
KR Type	
Kpi Current	0.00
Kpi YTD	0.00

Transaction Status:  [Save](#)

Account Type:

IncExp or BalSheet:

Last Upd By:

Last Upd:

[Data Driven Movement](#)

[Drw Audit Trail](#)

[History](#)

[Delete This Acct](#)

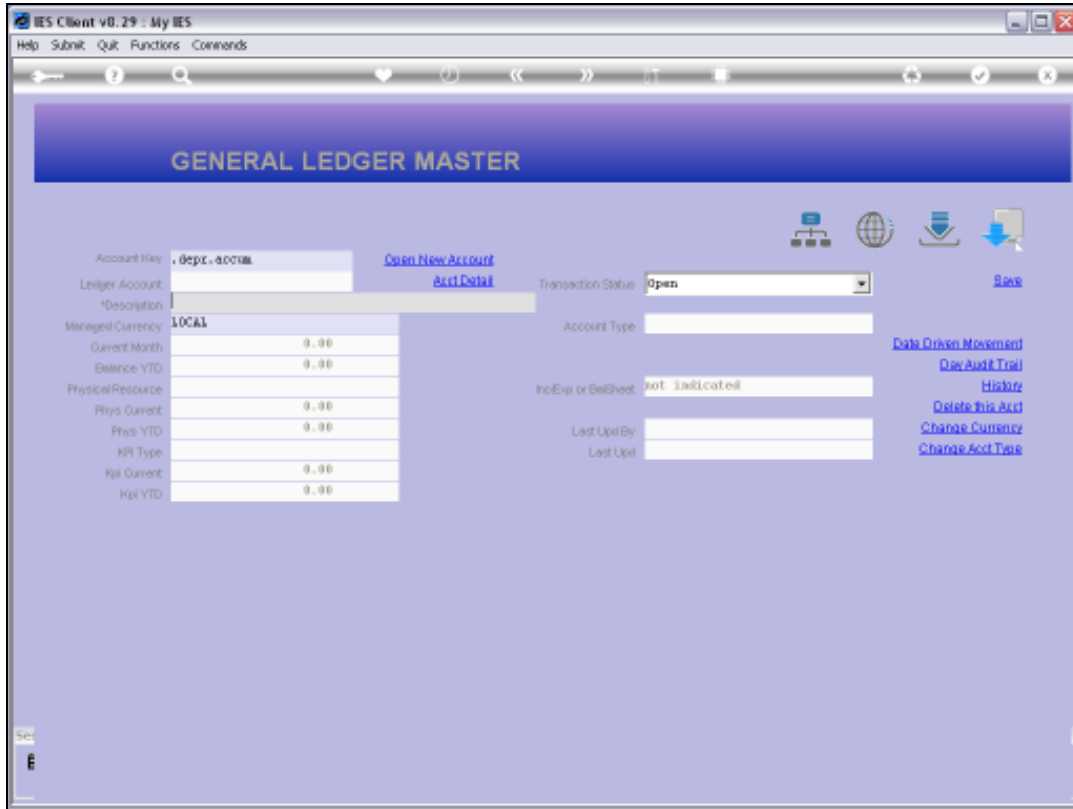
[Change Currency](#)

[Change Acct Type](#)

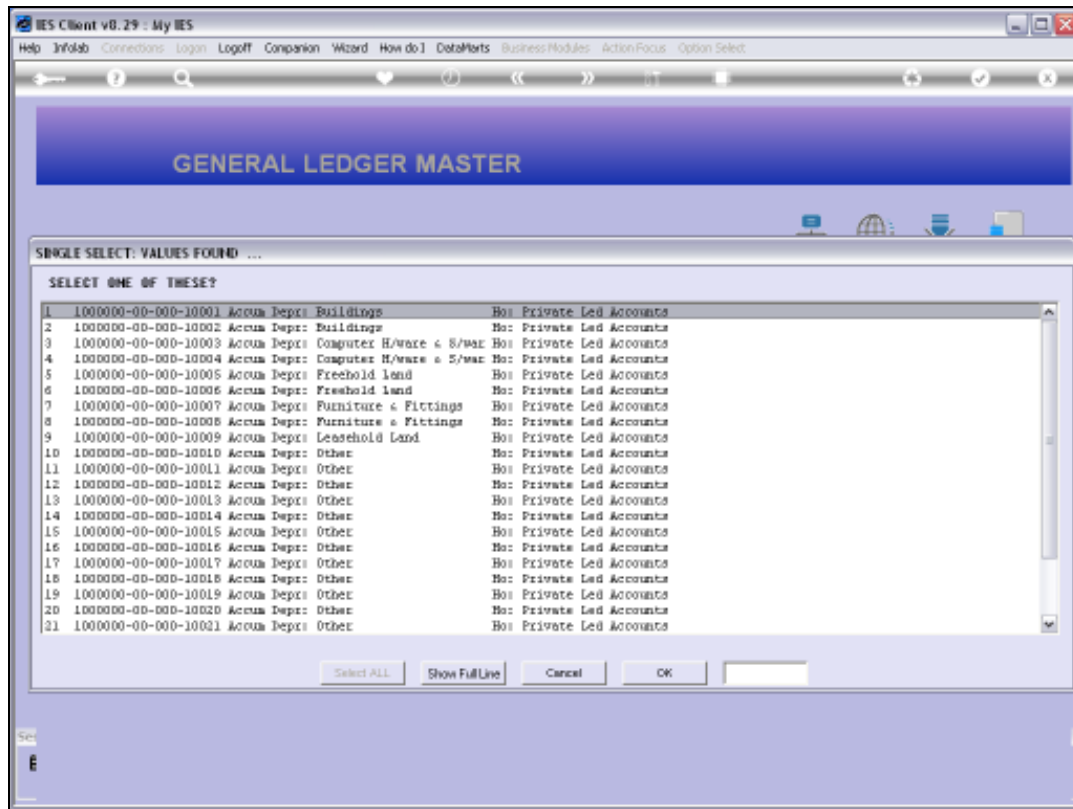
Sec

## Slide 1

Slide notes: The intuitive search method allows us to use the dot as an 'AND' operator. So if we type '.depr.accum' or any number of words or strings separated by dot, then only Accounts that include all of those strings will be returned.

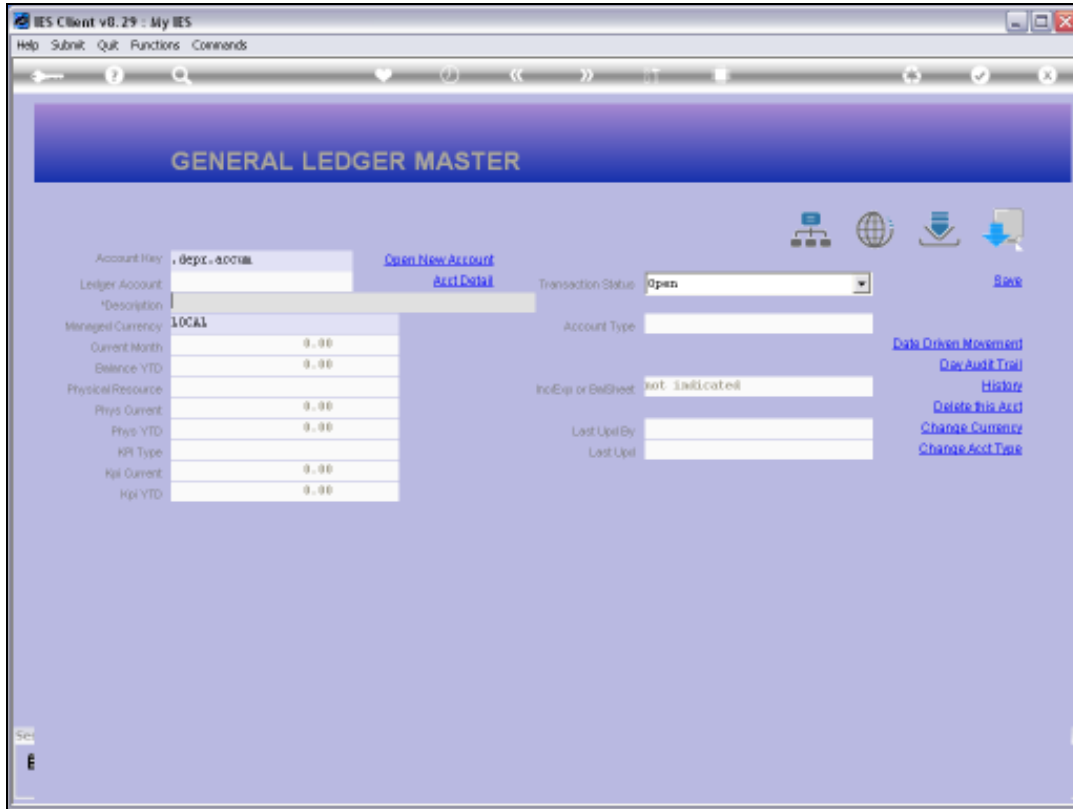


Slide 2  
Slide notes:



### Slide 3

Slide notes: All of the Accounts returned in this instance include both 'depr' and 'accum', the 2 strings we specified to be present.



Slide 4  
Slide notes:

**GENERAL LEDGER MASTER**

Account Key: 1000000000010022 [Open New Account](#)

Ledger Account: 100000-00-00-10022 [Acct Detail](#) Transaction Status: open [Save](#)

Description: ACCUM DEFERRED OTHER

Managed Currency: LOCAL Account Type: 31 ledger only [Data Origin Movement](#)

Current Month	0.00
Balance YTD	0.00

Physical Resource

Phys Current	0.00
Phys YTD	0.00
HR Type	
HR Current	0.00
HR YTD	0.00

Inc/Exp or BalSheet: not indicated [Doc Audit Trail](#)

Last Upd By: Barry [History](#)

Last Upd: 15/09/2010 [Delete This Acct](#)

[Change Currency](#)

[Change Acct Type](#)

income / expense vs budget

1.0												1.0	
0.8												0.8	
0.6												0.6	
0.4												0.4	
0.2												0.2	
0.0												0.0	
	Jan 2010	Feb 2010	Mar 2010	Apr 2010	May 2010	Jun 2010	Jul 2010	Aug 2010	Sep 2010	Oct 2010	Nov 2010	Dec 2010	

Legend: ■ inc ■ exp

Slide 5  
Slide notes: